

--	--

TO:	CHAIR AND MEMBERS COMMUNITY SERVICES COMMITTEE MEETING ON MAY 14, 2012
FROM:	WILLIAM C. COXHEAD DIRECTOR OF PARKS & RECREATION COMMUNITY SERVICES DEPARTMENT
SUBJECT:	Neighbourhood concerns with Greenway Off Leash Dog Area

RECOMMENDATION

That, on the recommendation of the Director of Parks & Recreation, with the concurrence of the Executive Director of Community Services, this report **BE RECEIVED** for information.

PREVIOUS REPORTS PERTINENT TO THIS MATTER
--

Off-Leash Area Site Evaluation July 9, 2007

Dogs Off-Leash Area Amending By Law November 12, 2007

BACKGROUND

On September 19, 2011 Municipal Council resolved that a request BE REFERRED to Civic Administration to investigate the neighbourhood noise concerns surrounding the Greenway Off-leash Dog Area, as well as report on the scope and volume of complaints received to date from all dog areas in London. This report will review the complaints to date for all dogs off leash areas in the city, efforts taken to address these complaint and options for further action.

OVERVIEW

History

The first off-leash dog area (OLA) was developed at Pottersburg Park in 1996. A second off-leash area opened in 2006 at Stoney Creek Meadows and a third at Greenway Park in 2007. These areas were developed in accordance with Council approved selection criteria included in Appendix A. All recreation uses in parks, including OLAs, must be at a minimum 30 meters from residential areas. Fencing, accessibility to main roads and space for parking are also considered in the location and design of OLAs.

Pollution Control Plant Expansion

It should be noted that a planned expansion of the Pollution Control Plant will occur in 2013. Initial plans and preparation for construction will occur in the fall of 2012. The existing boundaries of the off-leash dog area will remain in its current location but an adjustment to the location of the parking lot will take place to allow for the plant expansion.

Hours of Operation & Rules of Use

Currently, off leash dog areas are open from 6 am to 10 pm (or dusk). This is consistent with the Dogs Off-Leash Areas By-Law (PH-7) (Appendix B) and the hours of operation of all parks within the City of London. Information, including locations and rules of use, on OLAs can be



found on the City of London website (www.london.ca) (Appendix C). Also, note that OLA's are gated but not locked in the off hours. Parks are also covered by the Noise By-law (PW-12) and are subject to random inspections and complaint driven enforcement. The Noise By-law states:

2.1 No person shall make, cause or permit an unreasonable noise, or a noise that is likely to disturb the inhabitants.

Users & Maintenance

London's OLAs are extremely well used by London dog owners and working with the City, the London Dog Owners Association (LDOA) is committed to taking care of the off-leash dog areas. Their "Watch Dog" team of dedicated volunteers keep an eye on what goes on in the OLA's, whether it is to remind users of the rules or notify the City about garbage pick-up. Once a year, they organize a spring clean up in each of the OLAs.

OFF-LEASH AREA COMPLAINTS

There have been no complaints related to the Pottersburg or Stoney Creek OLAs registered with by-law enforcement or made to the Parks and Recreation or Parks Planning divisions.

Since the Greenway OLA opened in October 2007 there have been consistent complaints of excessive noise as a result of barking dogs by residents whose properties abut Greenway OLA.

- The Greenway OLA fence is 37.5 meters from the lot line of the closest residence and is well above the recommended 30 meter minimum setback.
- Since 2007 there has been one registered complaint with by-law enforcement related to excessive barking from the OLA and a total of thirty-seven (37) complaints made directly to a City Councillor, Parks and Recreation or Parks Planning staff.
- Twenty-seven (27) of the total complaints were for excessive noise (barking) and the remaining ten (10) were for parking issues (prior to construction of the parking lot), dogs off leash on neighbouring streets and within park, two incidents of stray dogs and one biting investigation.
- London Animal Care Centre responded to the stray dogs and biting complaints.

Twenty eight (28) of the total complaints were from a single resident and generally relate to excessive barking in the morning (until around 10:00 am) and during the evening (starting at 5:00 to 10:00 pm).

INVESTIGATION AND RESPONSE TO COMPLAINTS

The City of London has responded to these complaints in a number of ways including:

- Installation of new signage at the OLA indicating that "*Excessive barking is prohibited*" with instructions to:
 - *Ensure your dog is a "good neighbour";*
 - *Dogs bark when bored, lonely and to alert owners – excessive barking disturbs neighbours;*
 - *Resolve by training socializing, exercise and family interaction.*
- Parks Operations and By-law enforcement staff visit the Greenway OLA on a regular basis
 - Whenever a complaint is forwarded about excessive barking Parks staff have attended the OLA but found no excessive barking;
 - In 2009 a Parks operations staff was assigned to the off leash area for a period of two weeks and again found no excessive barking to be occurring;
 - In September 2011 focussed By-law enforcement patrols (in addition to regular patrols) were made on streets near the OLA and Kensal Park after complaints of off-leash dogs. There were no violations of by-laws found on the patrols;
 - Parks and By-law staff have been onsite for identified times when barking has consistently been an issue to educate patrons about rules and etiquette when using the OLA; and,
 - After new signage was installed Parks staff was onsite at several different times

--	--

to point out the new signs, distribute pamphlets and generally educate users on proper off-leash etiquette.

- Park Planning installed a cedar hedge along the rear of properties as requested through a petition process.
- Liaising with the London Off Leash Association to create an information pamphlet (APPENDIX D) about rules of use of OLAs that was circulated in the OLA a number of times by volunteers of the organization;
- The Association also put reminders about the rules and etiquette when visiting an off leash area in their newsletter and on their website;
- In 2010 noise levels were measured at numerous park amenities including the Greenway OLA. Over a three day period in September the peak noise level reached was 61 decibels, which is considered a comfortable level similar to normal conversation. In comparison peak noise from soccer games consistently registered at or near 80 decibels. In November 2011, By-law enforcement took further decibel readings and the maximum level reached was 65 decibels. These levels are considered a comfortable level and similar to normal conversation and consistent with average city traffic noise levels.

Notwithstanding of the actions taken to date the nature of the noise complaints has remained the same.

OPTIONS AND RECOMMENDATION

Considerations Further Action

Potential to Change the hours of Operation of the Greenway OLA.

Given that many of the complaints, of late, centre around early and late use of the OLA by park patrons and their animals one could consider changing either the opening of the OLA until later in the morning and/or close earlier in the evening than the by-lawed permissible park hours of 6:00 AM to 10:00 PM.

Altering the Off Leash Area dog area hours of hours of use in any way would have the following affects:

- Denies access to early morning and late evening patrons regardless of the bark factor of their animal.
- Signage would require changing to reflect the new hours
- Hours at the Greenway OLA would be different than that of the other two OLA's where no noise complaints have been received.
- City may be required to respond to complaints to enforce the new hours adding a new level of enforcement and associated costs
- May requiring locking of this facility to ensure compliance adding costs and moving off leash use elsewhere
- Dog walking in the park on leash outside the OLA would still be permissible
- Does not deal with any excessive dog barking during the new hours of operation.
- No guarantee of fewer complaints

Potential to increase By-law enforcement. In order to reduce or eliminate complaints of excessive barking a resident uniformed By-law Enforcement attendance would be required.

--	--

This measure is impractical and cost prohibitive.

Recommendation:


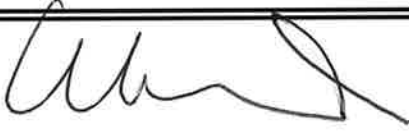

Given the small number and nature of the complaints **it is recommended that the City take no action to alter the hours of operation or enforcement regime** at off-leash dog areas and that the City Parks staff and By-law Enforcement continue to monitor the Greenway Off Leash Area, investigate complaints, educate users and work with the London Dog's off Leash Association to seek compliance to the rules in all Off Leash areas and that Off leash Dog Areas continue to operate under existing rules and by-laws.

It being noted that the City at Greenway OLA has:

- maintained an appropriate buffer from the OLA to residences,
- installed supplemental plantings at the rear of homes at the top of the slope,
- installed good neighbour signage and provided on site education,
- worked with the London Dog Owners association to deal with education,
- provides periodic staff on site to educate at problematic times,
- provides complaint driven inspection and response via by-law enforcement and parks staff

Acknowledgments

This report was prepared by Dianna Clarke with input by Orest Katolyk, By-Law Enforcement, Andrew Macpherson, Parks Planning & Design and Donna Baxter, Neighbourhood & Children's Services.

SUBMITTED BY:	
	
SCOTT STAFFORD DIVISION MANAGER, PARKS & COMMUNITY SPORTS DEPARTMENT OF COMMUNITY SERVICES	
RECOMMENDED BY:	CONCURRED BY:
	
WILLIAM C. COXHEAD, DIRECTOR, PARKS & RECREATION DEPARTMENT OF COMMUNITY SERVICES	ROSS L. FAIR EXECUTIVE DIRECTOR DEPARTMENT OF COMMUNITY SERVICES

- c Andrew Macpherson, Division Manager, Parks Planning & Design
- Orest Katolyk, Manager, By-Law Enforcement
- Donna Baxter, Manager of Research & Policy



APPENDIX A

SITE SELECTION CRITERIA FOR DOGS OFF-LEASH AREAS

Goal

To provide suitable opportunities for Londoners to exercise and socialize with their dogs in off-leash areas, in keeping with Council direction as outlined in the Parks and Recreation Strategic Master Plan (as expressed below) and to achieve an equal distribution of sites across the City.

"Recommendation 148. Establish new off-leash areas where it can be shown that there will be a minimum of impact on identified natural heritage areas and other park users. Pathways, play areas, and sports fields shall not be considered for off-leash areas."

Background

Site selection criteria were first developed through a review of similar criteria in other cities, as well as through a dialogue between staff and a dog owners group (Friends Interested in Dogs Off-leash (FIDO) in 1997). Criteria were then updated in 2003 with the London Dog Owners Association (LDOA), using accepted planning principles and recognizing the needs of both dog owners and park users (non-dog owners). The criteria are now being refined following up to date research on current standards used by other Canadian municipalities and London's own experience with off-leash parks.

Dogs Off-leash Area – City of London Definition

A dogs off-leash area is an area of parkland that is used exclusively for people to walk dogs off-leash. It is surrounded by fencing and is accessed through a double-gated entry system. Its size has to be large enough to allow for features such as a large open area, trails through a naturalized area, a separate small dogs area, etc., and be able to accommodate a large number of users. It is a popular destination of the park system and must be accessible from an arterial or collector road and must offer sufficient parking.

Current situation

London has currently two dogs off-leash areas:

- The Pottersburg-FIDO Dogs off-leash Area, on Hamilton Rd at Gore Rd
- The Stony Creek Dogs Off-leash Area, on Adelaide St N at Windermere Rd

There is a high demand from residents and from LDOA to build more off-leash areas. There is also a growing trend towards more off-leash areas throughout North America, as shown by the increasing number of municipalities with dogs off-leash parks.

Site Selection Criteria

Site selection is a three (3) step process. As with other "drive-to", City-wide recreation facilities such as spray pads, tennis courts and large skateboard parks, only certain parks are suitable for these uses in order to minimize impacts on local neighbourhoods while providing much needed recreation facilities activities. The site selection process includes:

Step 1 - Initial Screening Criteria: seven general criteria that must be met for a site to be considered as a potential off-leash area.

Step 2 - Setback and Layout Guidelines: Of the suitable sites for consideration, there are more detailed guidelines to consider when drafting the proposed layout plan for the potential off-leash area. If some of these guidelines can't be fully met, mitigation measures should then be explored to compensate.

Step 3 - Qualitative Review: If several potential sites are suitable within the geographic area, criteria to evaluate the relative quality of potential sites are used to rank them. A particular site may be more suited for a DOA due to the presence of existing vegetation, or topographical separation from neighbours. Once all the potential sites have been ranked, they are charted on a map to ensure equity or even distribution of off-leash areas across the city.

Note: In the following pages, " " indicates criteria that have been modified following comments from the review committee.



APPENDIX A

Step 1: Initial screening - General criteria established by the City of London for the selection of potential sites

In order to be considered as a potential location for the creation of a dogs off-leash area, a site must meet all of the following criteria:

CRITERIA	RATIONALE
1. The site is within the City of London boundary.	
2. The site is zoned OS1, OS2 or OS4, making it suitable for that usage. Written approval from the Upper Thames River Conservation Authority (UTRCA) is required if the site is located on flood plain lands (OS4). Environmentally Significant Areas (OS5) will not be considered as potential sites for off-leash areas.*	<i>These areas designated Open Space consist of public open space (such as parks) and flood plains lands. Private open space, cemeteries (OS3) and conservation lands such as Environmentally Significant Areas (OS5) are not suitable for off-leash areas.</i>
3. The site is not expected to be (re)developed for another purpose within the next 10 years, or the level of development is expected to be minimal.*	<i>It is not worth investing capital funding on a site that would be use only temporarily.</i>
4. The site can hold an off-leash area of at least 1.5 ha (±4 acres) in size.*	<i>Research on other municipalities and London owns' experience shows that this is a required minimum size in response to the high volume of users, constant use of the site, and impacts on the grounds.</i>
5. Space is available (or could be made available) outside of areas specifically designed for structured recreational activities (i.e. sports fields).	<i>Existing park uses should not share the space with an off-leash area or be displaced for the creation of an off-leash area, unless these existing uses are no longer needed or can be relocated to another site.</i>
6. The site is accessible from a main arterial or collector road and allows space for a parking lot. The need for traffic upgrades to ensure safe access and egress for site users must be considered.*	<i>Increased traffic volume in and through neighbourhood and parking on local streets must be minimized.</i>
7. The site is available for year-round use.	<i>Dogs need to be exercised all year round and off-leash areas are used 7 days a week / 365 days a year, despite of seasonal weather conditions.</i>

All potential sites are first assessed against the initial screening factors. Those that do not meet all requirements are eliminated from consideration.



APPENDIX A

Step 2: Proposed Layout and Setback Guidelines

Once a site meets all the initial criteria in step 1, a proposed layout plan is drafted for the off-leash area taking into consideration the following minimum setback guidelines.

MINIMUM SETBACK AND LAYOUT GUIDELINES	RATIONALE
<ul style="list-style-type: none"> • 100 metres (328 ft) away from schools and playgrounds* 	<p><i>Recognizing that interaction between small children and dogs should happen only under very close supervision, these two uses should be kept apart.</i></p>
<ul style="list-style-type: none"> • Fence 30 metres (± 100 ft) away from residential neighbours • Parking lot and main gate 50 metres (± 165 ft) away from residential housing 	<p><i>30 metres is our typical setback for any recreational activity in parks (ball diamond, soccer field, etc.) and is a sufficient setback from the fence. Parking lot and main gate are noise-generation areas, therefore the setback to residential neighbours is increased.</i></p>
<ul style="list-style-type: none"> • 5 metres (± 15 ft) away from other recreational activities such as sports fields and picnic areas* 	<p><i>This minimum setback is sufficient because of the presence of fencing. It is to allow space for a minimal buffer zone.</i></p>
<ul style="list-style-type: none"> • 15 metres (± 50 ft) away from high traffic roadways • 5 metres (± 15 ft) away from multi-use pathways (such as the Thames Valley Parkway)* 	<p><i>This setback is to allow sufficient space for a buffer zone between off-leash parks and high traffic roadways. Because of the presence of fencing, minimum setback to pathways can be decreased.</i></p>
<ul style="list-style-type: none"> • 15 metres (± 50 ft) away from watercourse and ESAs 	<p><i>This setback is to allow sufficient space for a buffer zone between off-leash parks and natural areas.</i></p>

If all of the general criteria are met but some of the setback and layout guidelines can't be met, mitigation measures must then be explored to compensate.

Potential sites then proceed to step 3 to be evaluated according to qualitative criteria.

Step 3: Qualitative Review

The following criteria will evaluate the quality of potential sites and allow to compare and rank them.

A. Setting

Sites that provide a variety of natural terrains will score high H-5
 while more homogenous areas - all flat or all wooded - will score M-3
 low. L-1

B. Pedestrian Accessibility

Sites that are accessible to adjacent neighbourhoods via pathways and trails will score high. As accessibility becomes more difficult the scoring declines. H-5
M-3
L-1

C. Buffers

Sites that have existing visual buffers such as topography, vegetation, etc., between adjacent properties and the proposed site will rank high. H-5
 Scoring will decline where no buffers exist.* M-3
L-1

D. Impact on the Natural Environment

Sites which will not adversely impact the environmental status quo will score high, while those that require additional development, hence impacting on environment, will score lower. H-5
M-3
L-1

E. Economic Feasibility

Sites where construction can occur at a reasonable cost will score high. H-5
 Those where construction requires special measures or features M-3
 increasing the cost will score lower. L-1

Total Possible 25

Once all the potential sites have been ranked, they are charted on a map to ensure equity or even distribution of off-leash areas across the city.

The higher the score, the more suitable the site, but all sites passing step 2 could be reasonably developed as off-leash parks.

Agenda Item # Page #

--	--

APPENDIX B

Dogs Off-leash Areas By-law

PH-7 – Consolidated November 19, 2007

**This by-law is printed under and by authority
of the Council of the City of London, Ontario, Canada**

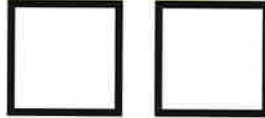
Disclaimer:

The following consolidation is an electronic reproduction made available for information only. It is not an official version of the by-law. The format may be different, and plans, pictures, other graphics or text may be missing or altered. The City of London does not warrant the accuracy of this electronic version. This consolidation cannot be distributed or used for commercial purposes. It may be used for other purposes only if you repeat this disclaimer and the notice of copyright. Official versions of all by-laws can be obtained from the City Clerk's Department by calling (1-519)-661-4505.

Copyright 2001



London
CANADA



APPENDIX B

**OFFICE CONSOLIDATION
INCLUDING AMENDMENT PH-7-05002 (Nov 19, 2007)**

Bill No. 308
1997

By-law PH-7

A by-law to establish and regulate a park in which dogs can run at large in the City of London.

Whereas by-laws may be passed by the Councils of all municipalities for establishing and laying out public parks and for exercising all of the powers that are conferred on boards of park management by the *Public Parks Act* pursuant to paragraph 52 of section 207 of the *Municipal Act*,

And whereas by-laws may be passed by the councils of local municipalities for regulating the running at large of dogs within any defined area of the municipality pursuant to paragraph 13 of section 210 of the *Municipal Act*,

The Municipal Council of The Corporation of the City of London enacts as follows:

1. "Dogs Off-Leash Area" shall mean an area of land designated in this by-law for which signs are posted by the City of London indicating that dogs are permitted to run at large.
- 1.1 "owner" includes any person who owns, keeps, possesses, harbours or acts as a guardian of a dog for any length of time, whether or not that person has a licence for the dog, and, where the owner is a minor, the person responsible for the custody of the minor.
- 1.2 Dogs Off-Leash Areas are hereby established on those lands as outlined in Schedule "A" of this By-law.
2. (1) Subject to subsection 2(1.1), a dog owner may permit their dog licensed under By-law PH-4, as amended, or any successor by-law thereto, to run at large in a Dogs Off-Leash Area.
(1.1) Owners of dogs whose dogs are required to be muzzled, including Pit Bulls as defined in the *Dog Owners' Liability Act*, may not permit the dog that is required to be muzzled to run at large in a Dogs Off-Leash Area.
(2) Section 3.3 and 4.10 of By-law PH-4, as amended, shall not apply to persons who permit their dogs to run at large in accordance with subsection (1).
(3) No person shall permit a dog to run at large pursuant to subsection (1) unless that person is in the area signed to permit the running at large of dogs and within sight of the dog at all times.
(4) A Dogs Off-Leash Area is a designated leash-free area for the purposes of Section 3.1(36) of Parks By-law PR-2, as amended.
3. No person shall remain in a Dogs Off-Leash Area between the hours of 10:00 p.m. and 6 a.m. of the following day.
4. No person shall play or practice any sporting activity except walking within a Dogs Off-Leash Area.



APPENDIX B

2

5. No person shall convey to or on, or enter or be on any area in a Dogs Off-Leash Area while in the possession of any bottles, containers or any other articles, equipment, or utensils, made of glass, china, ceramic or other breakable substance capable of causing injury to a dog.

6. No person shall permit any animal other than a dog of which he is the owner to be at large in a Dogs Off-Leash Area.

7. (1) Any person who contravenes any provision of this by-law is, upon conviction, guilty of an offence and is liable to any penalty as provided in the Provincial Offences Act.

(2) The court in which the conviction has been entered, and any court of competent jurisdiction thereafter, may make an order prohibiting the continuation of repetition of the offence by the person convicted, and such order shall be in addition to any other penalty imposed on the person convicted.

7.1 The Short title of this By-law is "Dogs Off-Leash Areas By-law".

8. This by-law shall come into force and effect on or after the 5th day of August, 1997 when signs have been erected and are on display permitting dogs to run at large in accordance with section 2 of this by-law.

PASSED in Open Council on August 5, 1997.

Dianne Haskett
Mayor

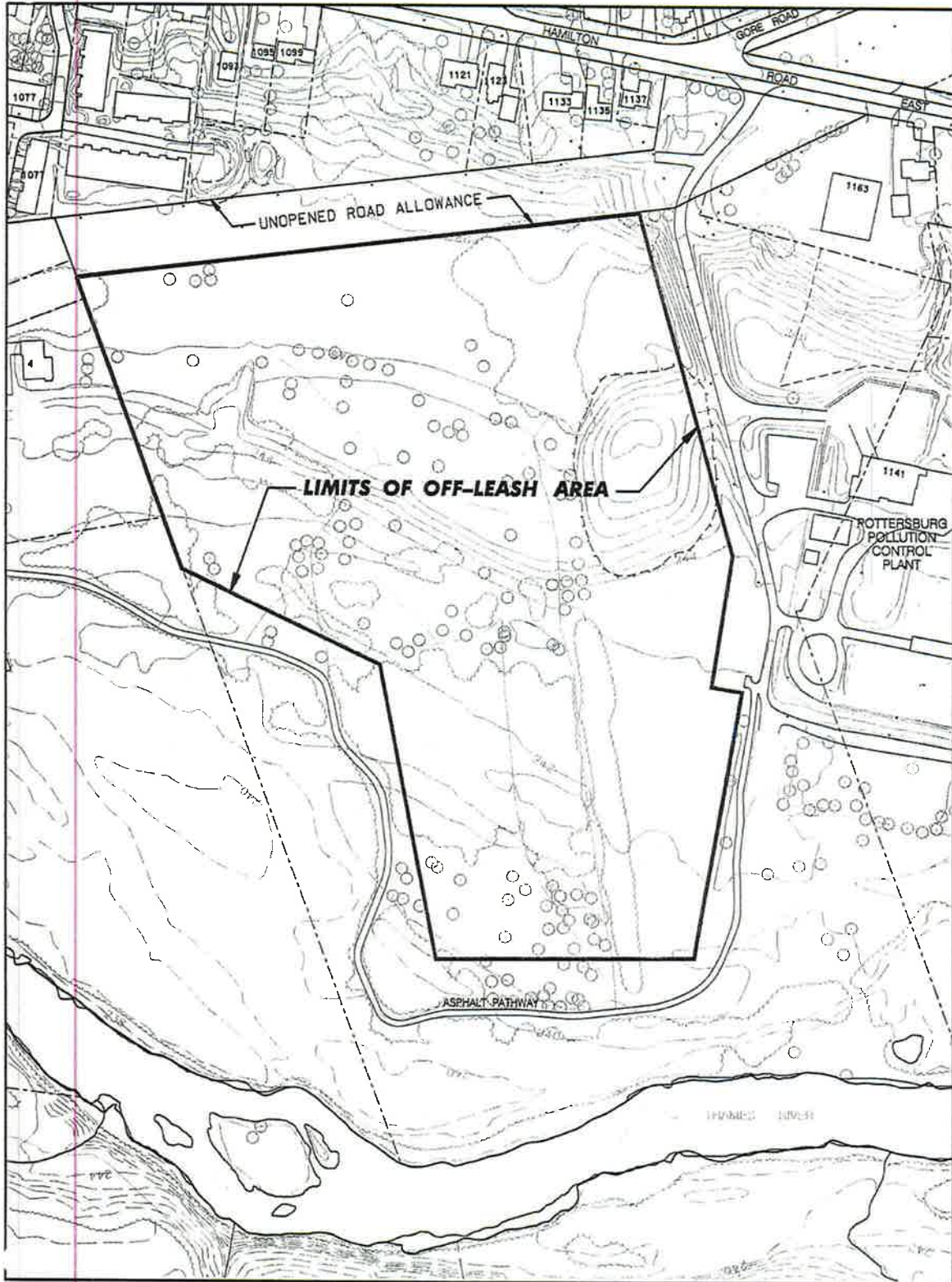
Jeff A. Malpass
City Clerk


--	--

APPENDIX B

Schedule "A"

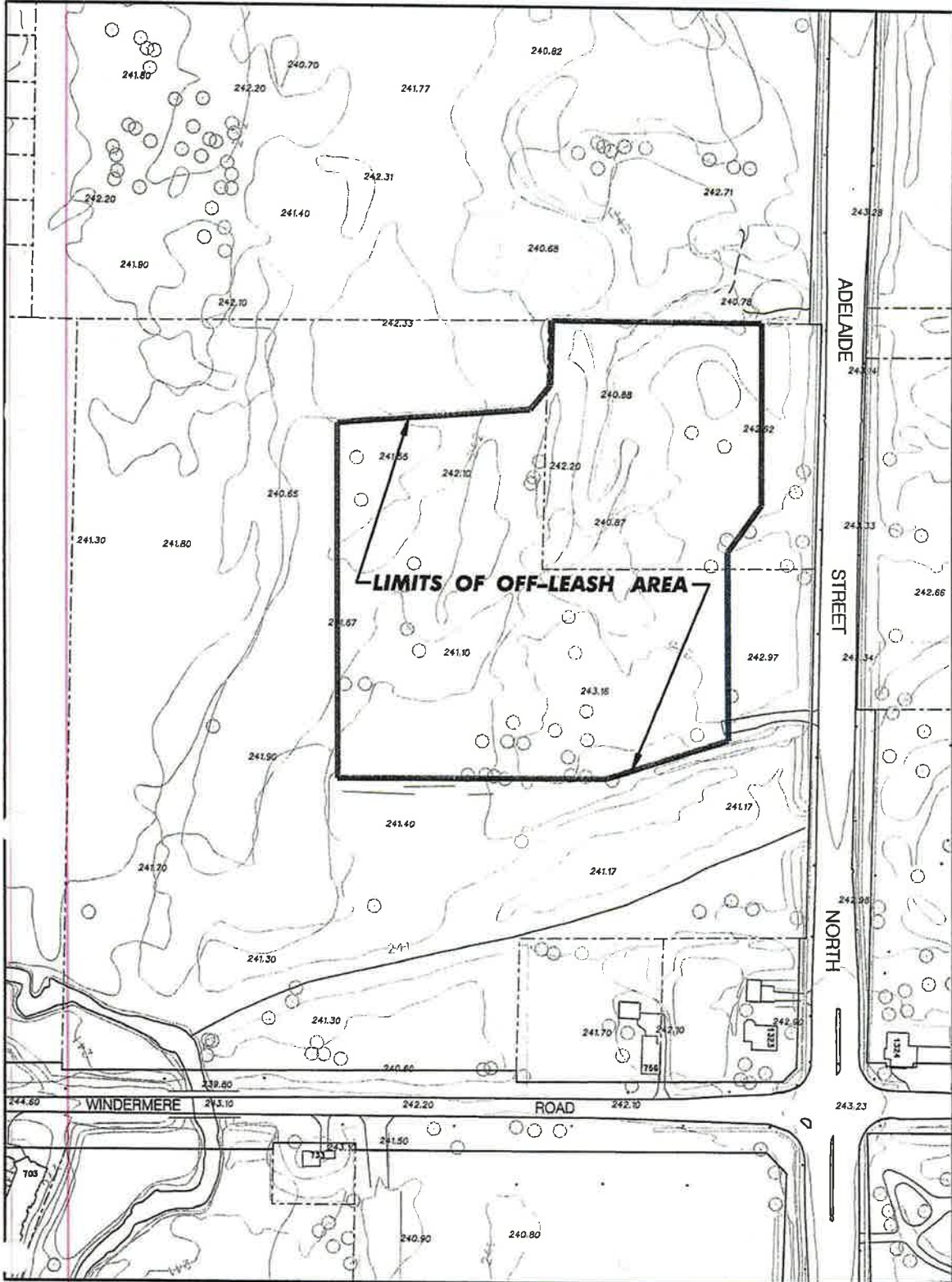
The following are designated as Dogs Off-Leash Areas:




LOCATION MAP			FILE NO. POTTERSBURG-DOGWALK-V7.DGN
ENVIRONMENTAL & ENGINEERING SERVICES DEPARTMENT	CITY OF LONDON		DATE : 05/08/02
POTTERSBURG - FIDO OFF-LEASH AREA			

--	--

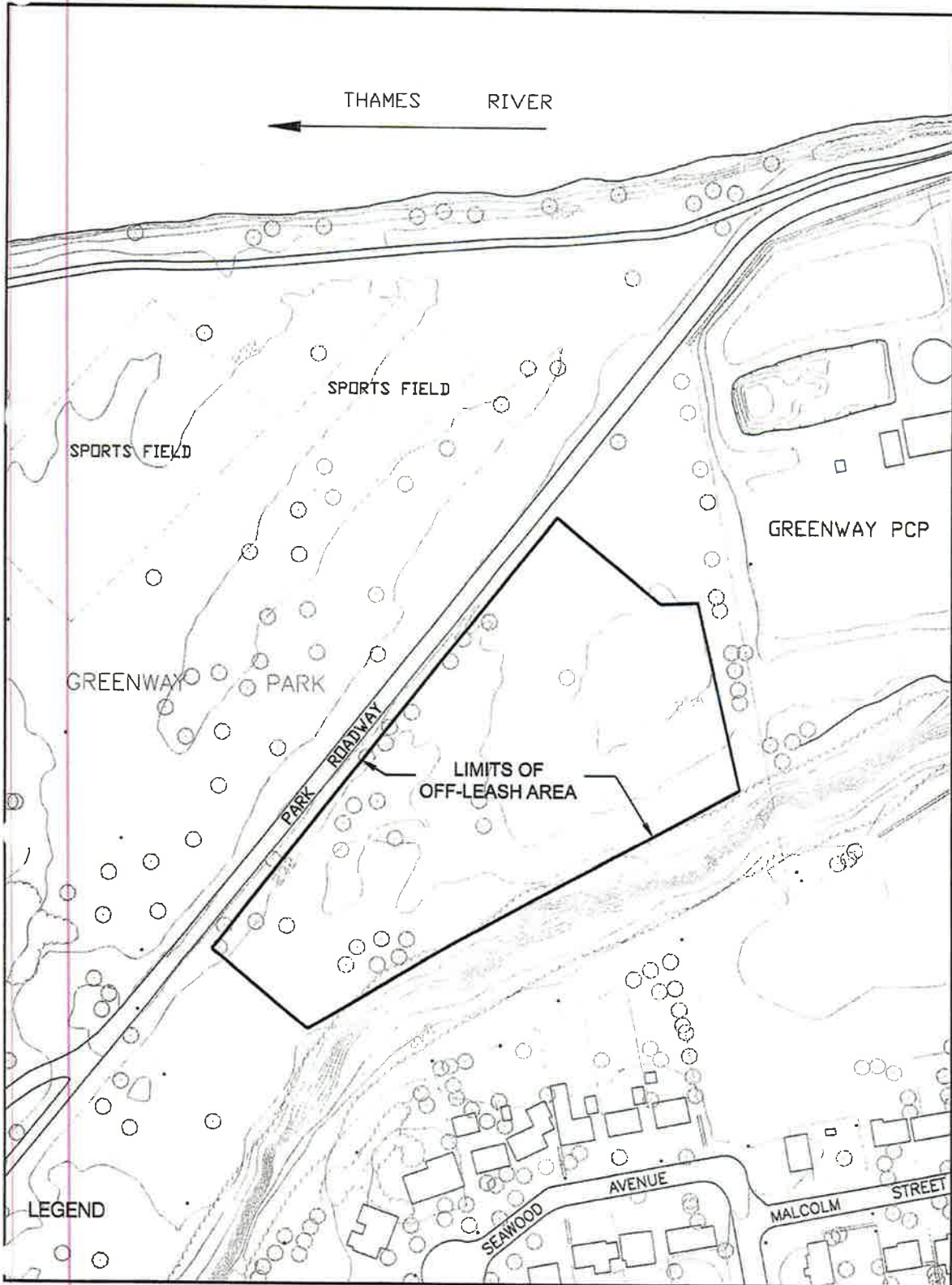
APPENDIX B




LOCATION MAP ENVIRONMENTAL AND ENGINEERING SERVICES DEPARTMENT CITY OF LONDON		FILE NO. STONEY CREEK-DOGWALK-V7.DGN
STONEY CREEK DOGS OFF-LEASH AREA		DATE : 05/08/02

--	--

APPENDIX B



LOCATION MAP			FILE NO. GREENWAY_DOGWALK.DGN
ENVIRONMENTAL AND ENGINEERING SERVICES DEPARTMENT	CITY OF LONDON		DATE : 07/10/24
GREENWAY OFF-LEASH DOG AREA			

--	--

APPENDIX C



www.london.ca

Home > City Life > Parks & Natural Areas > Off-leash Dog Parks
Does your Dog Need a Place to Run?



For your information

Canine Parvovirus has been identified in London recently as well as several other municipalities. Parvovirus is highly contagious and fatal if not treated. The City of London is suggesting all pet owners ensure their dogs are up to date with their vaccinations. Also, pet owners must recognize that if their dogs are not vaccinated, they are not permitted to use City of London Off-leash Dog Parks.

Use the link to find out what [steps you can take to protect your pet](#) from this viral disease which is spread by fecal-oral transmission.

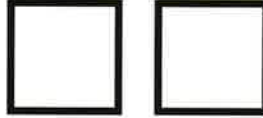
Off-leash Dog Parks

Dog owners in London have access to three off-leash parks to exercise and socialize with their animal. Off-leash areas are clearly delineated by fencing or boundary signs. They are open year round, from 6 a.m. until 10 p.m. (or dusk). Every user is responsible to clean up after their pet.

Rules of the off-leash area

For the good functioning of the off-leash area, users are required to respect the following rules:

- Open from 6 a.m. to 10 p.m.
- All Dogs **MUST** have up to date vaccinations, rabies shots and license tags required
- Use the off-leash area at your own risk
- Leash your dog while entering and exiting
- Keep your dog within sight and under verbal control
- Clean up after your dog
- Do not allow your dog to chase wildlife



APPENDIX C

- No puppies under 4 months, female dogs in heat, sick dogs or aggressive dogs
- Dogs required by law to be leashed and muzzled must remain so while in the off-leash area
- No glass containers, food or toys
- Children **MUST** be supervised by an adult **AT ALL TIMES**
- **Parents** are advised this site is **NOT** suitable for young children
- Off-leash area users are subject to the Dog Owners' Liability Act

Pottersburg-FIDO Off-leash Area

London's first off-leash area, and also the largest, is located within Pottersburg Park. It can be accessed from Hamilton Road at Gore Road. This off-leash area has a completely fenced section and an open section delineated by boundary signs. Both sections offer trails through naturalized areas. There is also a separate area for small dogs. Site amenities include parking, double-gated entrances, garbage container, picnic tables and benches, rule sign, bulletin board, and portable toilet. **Please be considerate of other park users and leash your dog if you are using the paved Thames Valley Parkway outside of the designated area.**



Stoney Creek Off-leash Area

London's second largest off-leash park is located within Stoney Creek Meadows, on Adelaide Street North at Windermere Road. Surrounded by trees and meadows, this off-leash area is completely fenced and offers an open area and trails through a naturalized area. There is also an area for small dogs, with a separate entrance from the parking lot. Site amenities include parking, double-gated entrances, garbage containers, benches, rule sign, bulletin board, and a portable toilet. Please be considerate of wildlife and other park users and leash your dog when outside of the fenced area. This area is located in the floodplain and is subject to flooding.



Greenway Off-leash Area

London's newest off-leash park is located within

--	--

APPENDIX C

Greenway Park. The off-leash area can be accessed from Greenside Avenue off of Springbank Drive. Greenside Avenue makes a bend to the left, towards the Greenway Pollution Control Plant (PCP). Make a right before the PCP, carefully follow the driveway along the river, and the off-leash area will be on your left just after the PCP. This off-leash area is completely fenced and offers an open area and trails through a naturalized area. There is also an area for small dogs, with a separate entrance and parking lot. Site amenities include parking, double-gated entrances, garbage containers, benches, rule sign, bulleting board, and a portable toilet. Other activities in Greenway Park include soccer fields, a Saturn Playground, a picnic area with a viewing platform onto the Thames River, and a butterfly garden. **Please be considerate of other park users and leash your dog when outside of the fenced area.**



Contact Information

To report any maintenance concerns, vandalism, or misuse of the off-leash areas, please call the City of London:

- During office hours, 519 661-2500 ext. 4570
- After hours and week-ends (emergencies only), 519 661-2500 ext. 4965

London Dog Owners Association

The London Dog Owners Association (LDOA) is our community partner in developing new off-leash areas and taking care of the existing dog parks. Their Watch Dog team of dedicated volunteers keeps an eye on what goes on in the parks, whether it is to remind users of the rules or notify the City about garbage pick-up. Once a year, they organize a spring clean up in each of the park. They also organize various events throughout the year. To get more information on LDOA or to help out, please visit their website at www.londondogownersassociation.ca

--	--

APPENDIX D

London Dog Owners Association



- 1) Open from 6 a.m. to 10 p.m.
- 2) All dogs **MUST** have up to date vaccinations, rabies shots and licenses
- 3) No puppies under 4 months, female dogs in heat, sick dogs or aggressive/out of control dogs
- 4) Never leave your dog alone in the park
- 5) Use the off-leash area at your own risk
- 6) Leash your dog while entering and exiting
- 7) Keep your dog within sight and under verbal control
- 8) Clean up after your dog - Always remember to Scoop up the Poop!
- 9) Do not allow your dog to chase wildlife
- 10) No glass containers, food or toys (these could cause a fight)
- 11) Children must be supervised by an adult
- 12) Off-leash area users are subject to the Dog Owners' Liability Act
- 13) Fill the holes your dog digs
- 14) Help keep the park clean, and work as a group

Remember to use the whole area; don't just stand at the gate. Socialization for both you and your dog is important.

Dog owners must take the initiative to be a responsible and conscientious group ensuring that their actions support the privilege of sharing parkland and open spaces with the community.

"If your dog shows any signs of illness or unusual behaviour, consult your veterinarian immediately"

For more information please contact:

www.LondonDogOwnersAssociation.ca