



London
CANADA

Construction Notice Kiwanis Park Pathway Connection

June 9, 2017

Dear Property Owner/Resident,

The City of London will be starting a construction project in your area. This letter provides details about the project and important information on how construction may impact you.

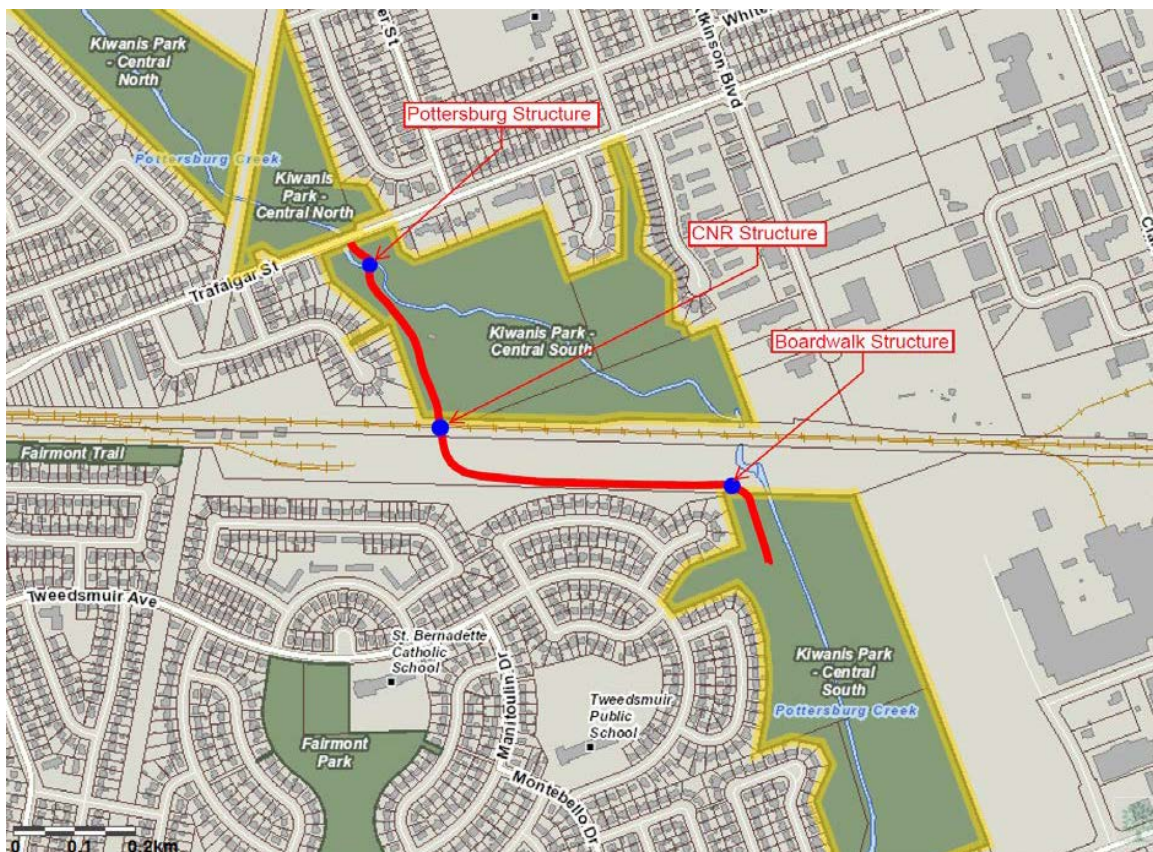
Project Details

Location	Kiwanis Park Pathway Connection
Schedule	Start – June 2017* Estimated Substantial Completion – Winter 2017*
Scope	<ul style="list-style-type: none"> • A new pathway railway grade separation and Bridge over CNR; • A new bridge crossing over Pottersburg Creek and reconfiguration of the existing parking lot; • A new elevated boardwalk structure south of the CNR; • Adjustments to the existing pathway underneath the Trafalgar Street structure; and, • A new pathway design from south of Trafalgar Street to the existing pathway terminus. • Ecological restorations, as well as new tree and shrub planting
Traffic Impacts	Construction access will be off Hale Street via the existing CN corridor, as well as off the Trafalgar Road at the Pottersburg Creek with limited access off Tweedsmuir Ave. While traffic impacts are expected to be limited, information regarding any traffic impacts during the course of construction will be provided through the City's website, www.london.ca/construction with specific information about the work.
Contractor	Dufferin Construction Company

*Please note that the timelines are approximate and subject to weather, approvals and other factors.

**Project is partially funded by the Province of Ontario and Government of Canada (PTIF, Canada 150 CIP and OMCIP).

Project Map



How Will Construction Impact You?

Working Hours: Work will typically take place from 7:00 a.m. to 5:00 p.m., Monday to Friday. In some extenuating circumstances work may need to occur outside of these typical hours to accommodate the completion of the project within the established schedule and to minimize the social impacts of the work.

Park Access and Parking: Access to the Park or/and Parking Lot, located south of Trafalgar Street at Pottersburg Creek, will be closed for the entire duration of the project.

Vibration – Protect Valuables: Construction equipment can cause vibrations. Please ensure you protect any valuables susceptible to damage.

Garbage and Recycling Collection: If your pick-up point is temporarily blocked by construction the contractor will assist in collecting and transporting your garbage and recycling. Please clearly label your containers with your address.

Contact Information

If you have any questions about this project please contact one of the people listed below. During construction you can also speak with the inspector on-site. If there is a construction related emergency and there are no staff on-site to report it to then please contact the City of London dispatch at 519-661-4965.

Consultant Project Manager	Gavan McDonald, 519-963-5892, gavan.mcdonald@aecom.com
Site Inspector	Ryan Hunt, 519-566-2331, Ryan.Hunt@aecom.com
City Project Manager	Max Kireev, 519-661- CITY (2489) ext. 5925, mkireev@london.ca
General Inquiries	519-661-CITY (2489), es@london.ca
Website	www.london.ca/construction

Thank you in advance for your cooperation.

Sincerely,



Ardian Spahiu, P. Eng.
Transportation Design Engineer, Transportation Planning & Design

Cc: Councillor Michael van Holst – Ward 1
Councillor Bill Armstrong – Ward 2
Kelly Scherr – Managing Director and City Engineer

Information available in alternate formats upon request.