

Appendix "C" Project Location Maps



London
CANADA

2017 Clean Water & Wastewater Fund

Contract 19 - Location Map

Elworthy Avenue East from Cathcart Street to Base Line Road East
Franklin Street from Wortley Road to Ridout Street





2017 Clean Water & Wastewater Fund

Contract 20 - Location Map

Grosvenor Street (from Maitland Street to Adelaide Street North)



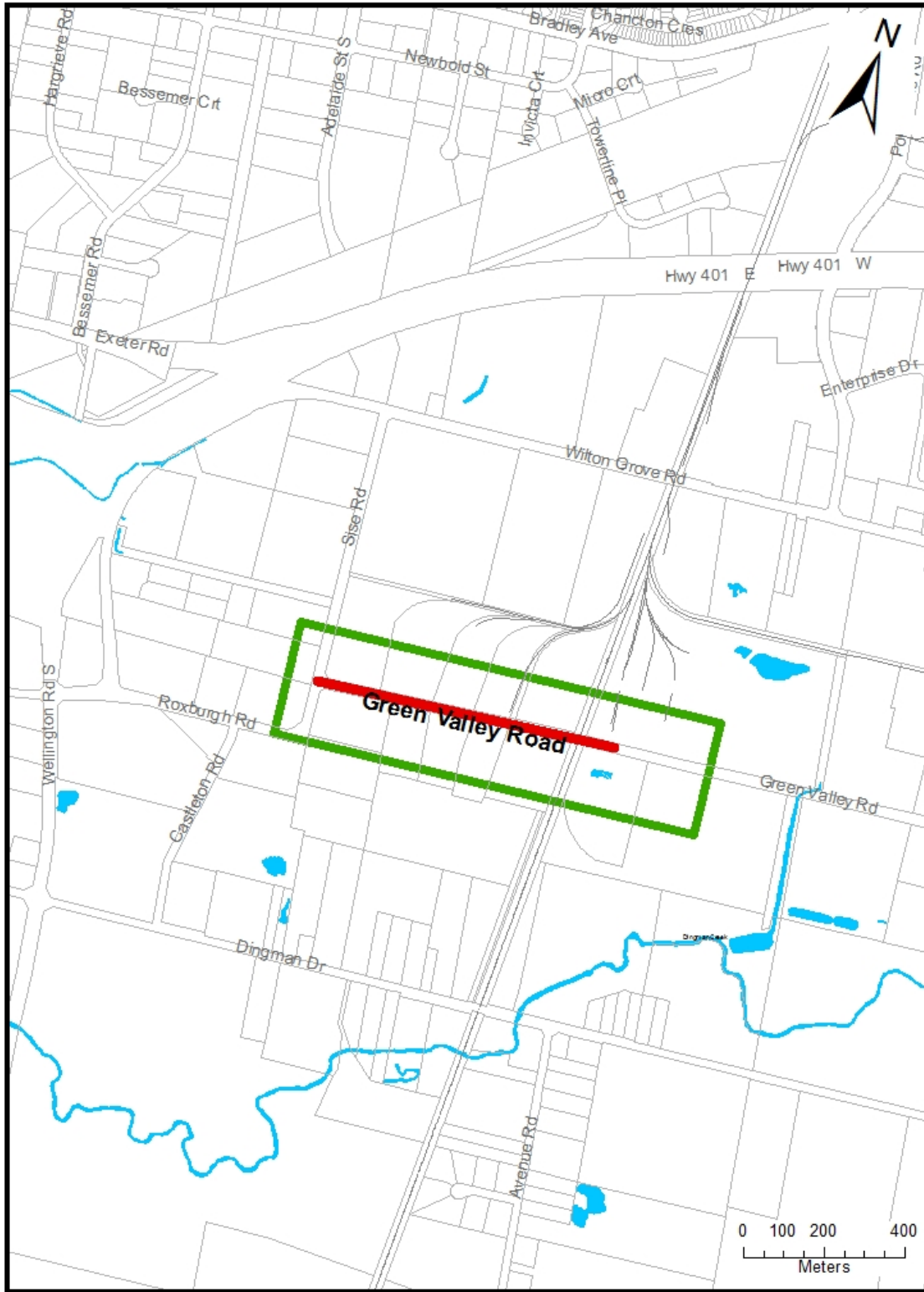


2017 Infrastructure Renewal Program

Contract 16 - Location Map

London
CANADA

Green Valley Road (from Sise Road to east of rail tracks)

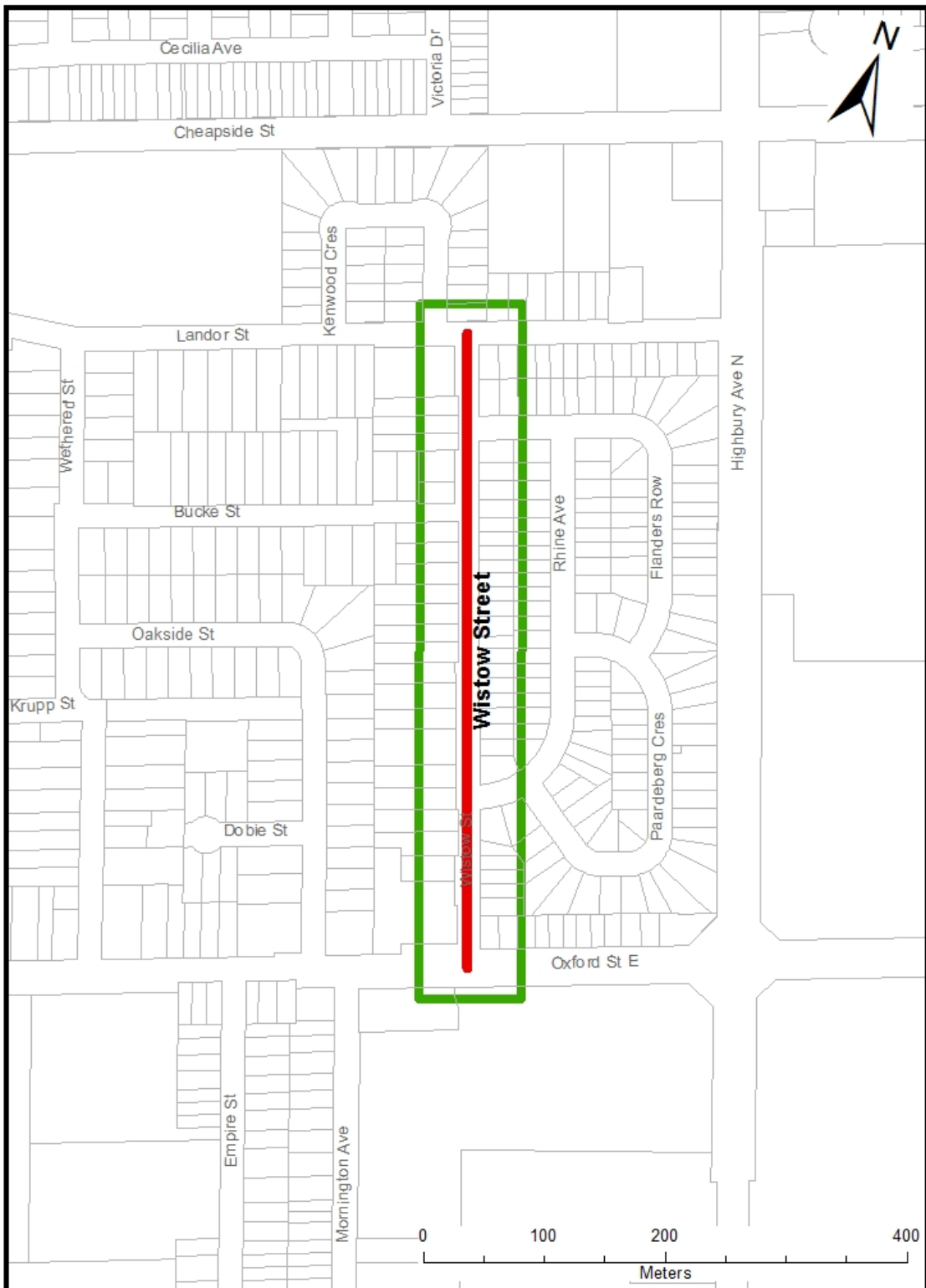




2018 Clean Water & Wastewater Fund

Contract 1 - Location Map

Wistow Street (from Oxford Street East to Landor Street)





2018 Clean Water & Wastewater Fund

Contract 2 - Location Map

Highway Avenue (from Wharncliffe Road to Edward Street)
Lambeth Avenue (from Wharncliffe Road to Edward Street)





2018 Clean Water & Wastewater Fund

Contract 3 - Location Map

Waterloo Street (from Oxford Street East to Grosvenor Street)

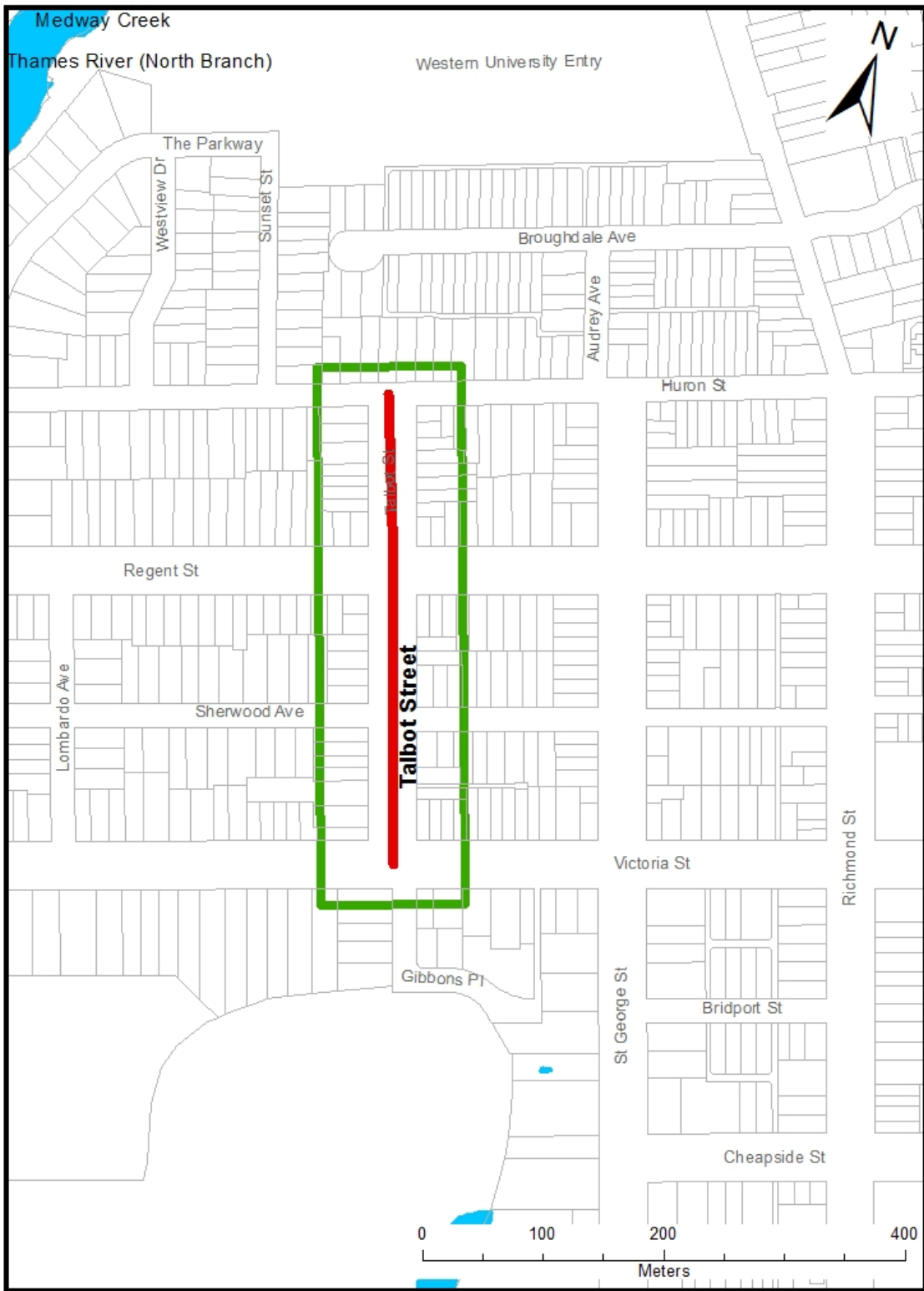




2018 Clean Water & Wastewater Fund

Contract 4 - Location Map

Talbot Street (from Victoria Street to Huron Street)

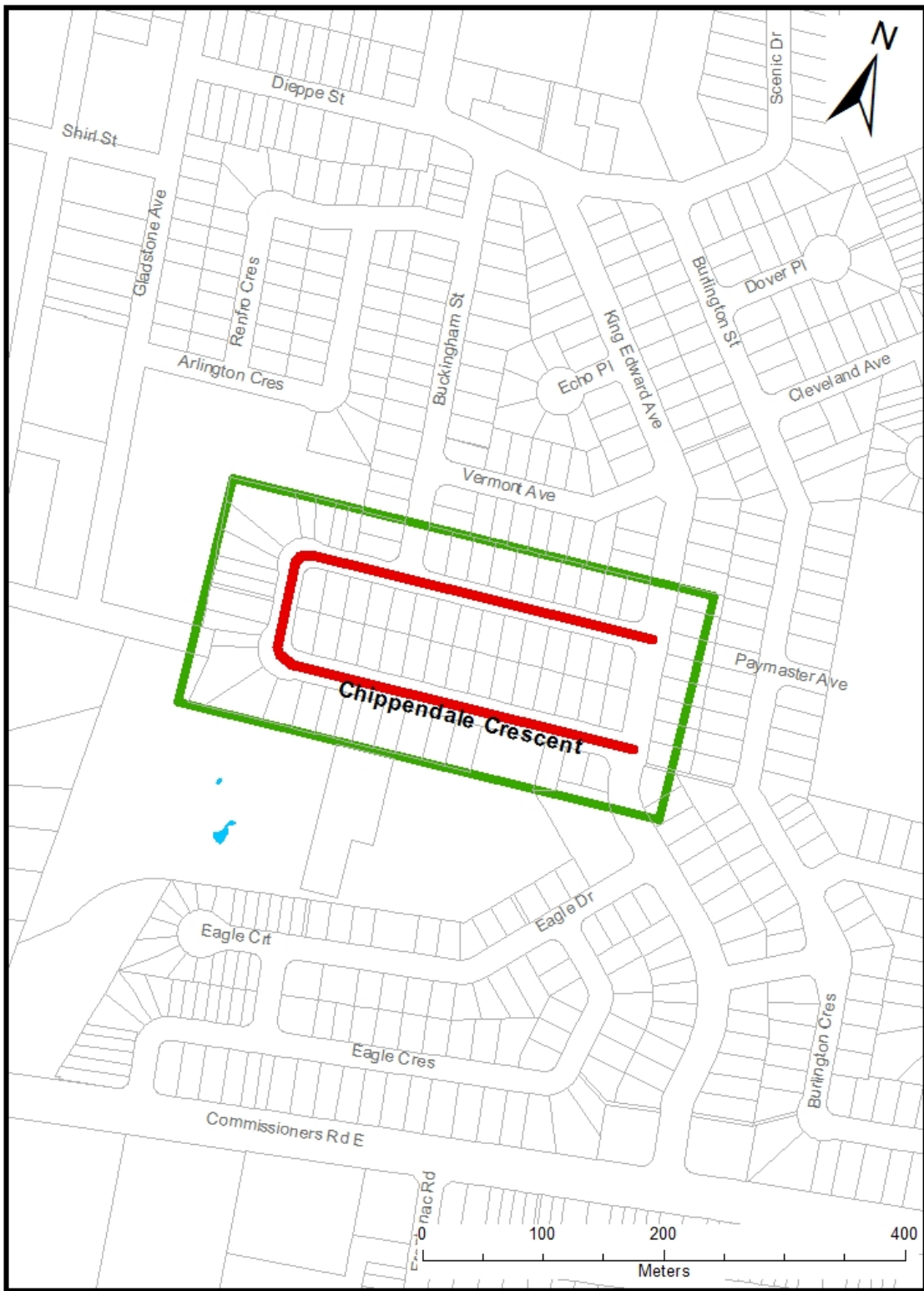




2018 Clean Water & Wastewater Fund

Contract 5 - Location Map

Chippendale Crescent (all)



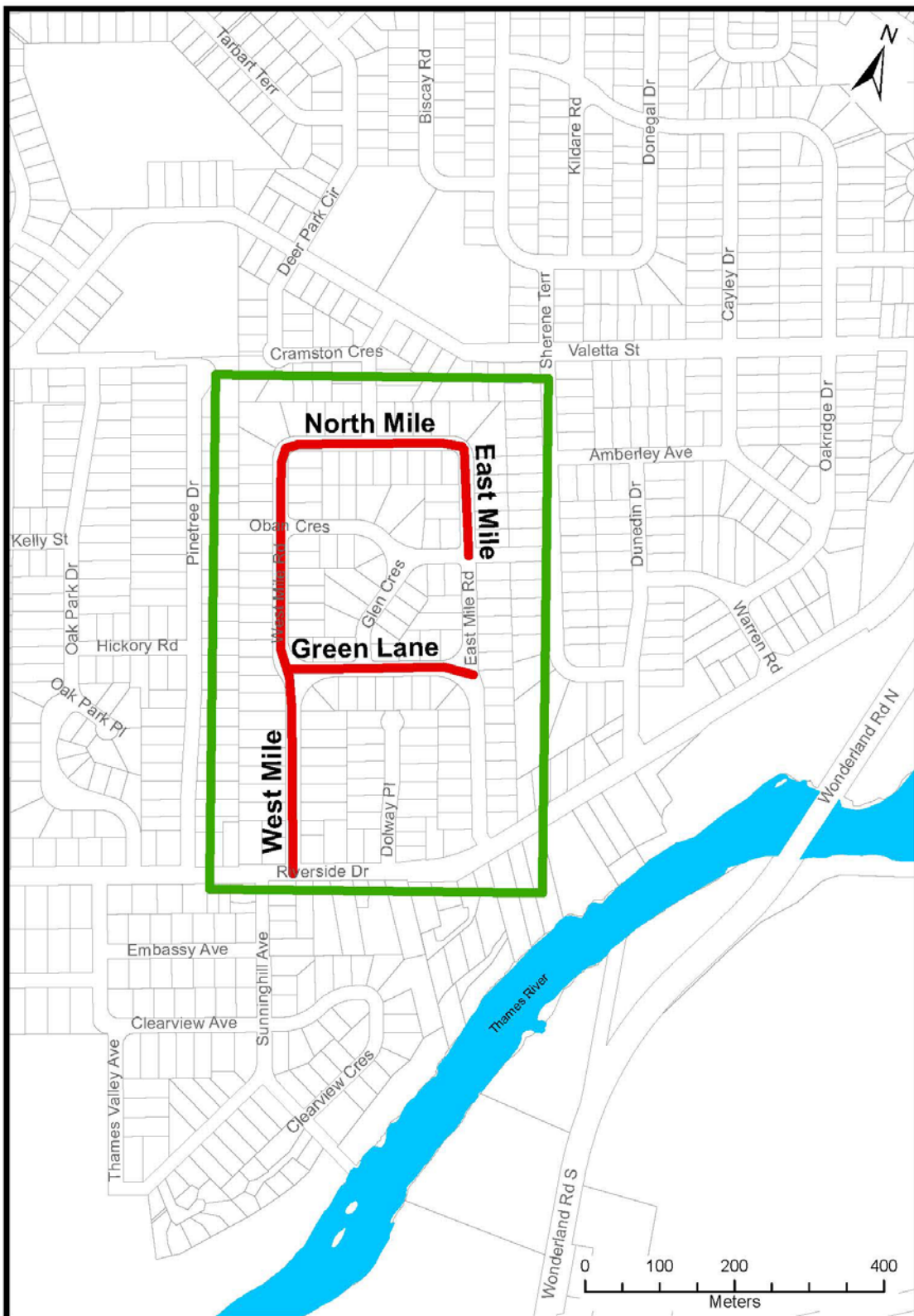


London
CANADA

2018 Infrastructure Renewal Program

Contract 6 - Location Map

- East Mile Road (from Oban Crescent to North Mile Road)
- West Mile Road (from Riverside Drive to North Mile Road)
- North Mile Road (from West Mile Road to East Mile Road)
- Green Lane (from West Mile Road to East Mile Road)



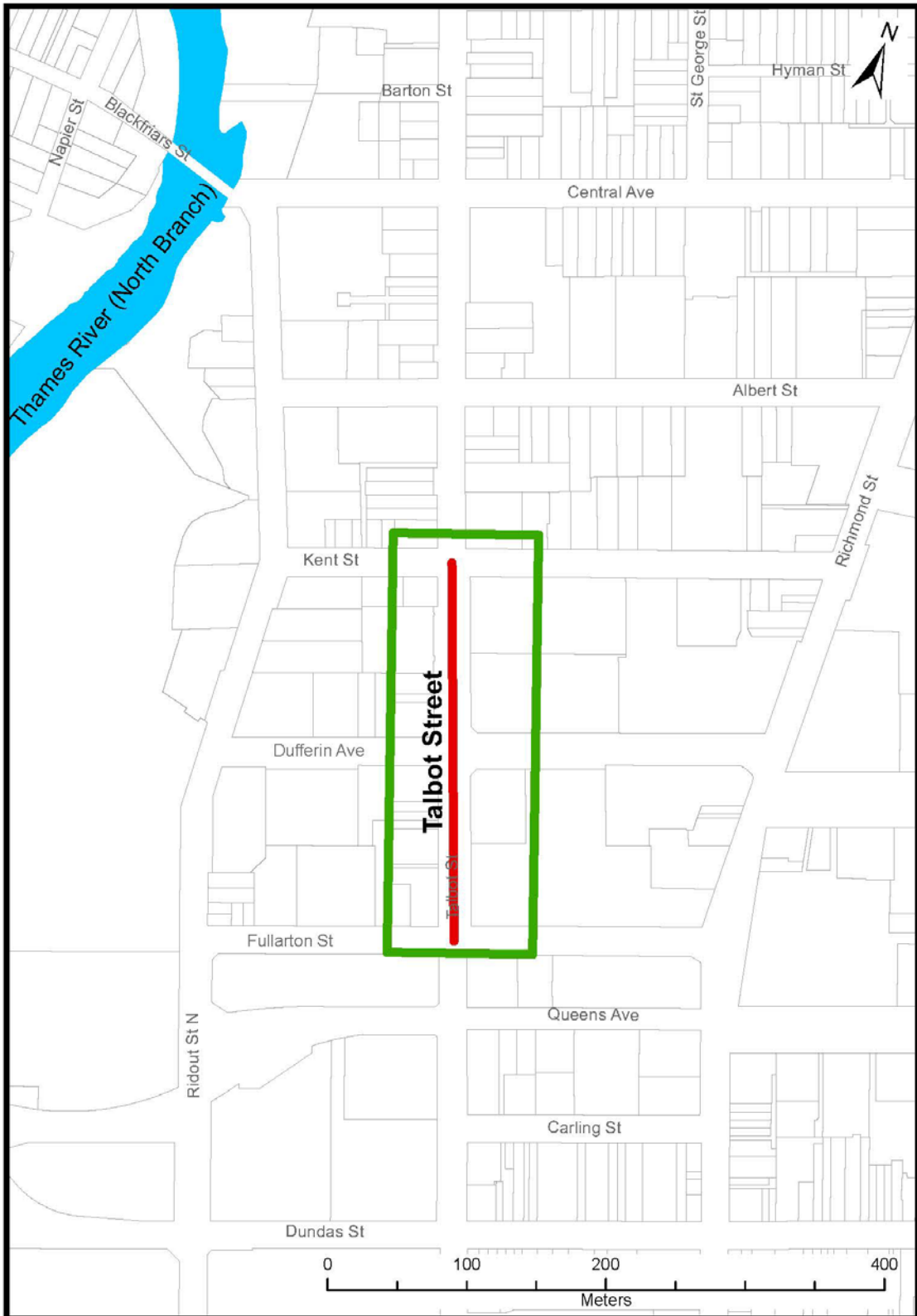


2018 Infrastructure Renewal Program

Contract 7 - Location Map

London
CANADA

Talbot Street (from Fullarton Street to Kent Street)



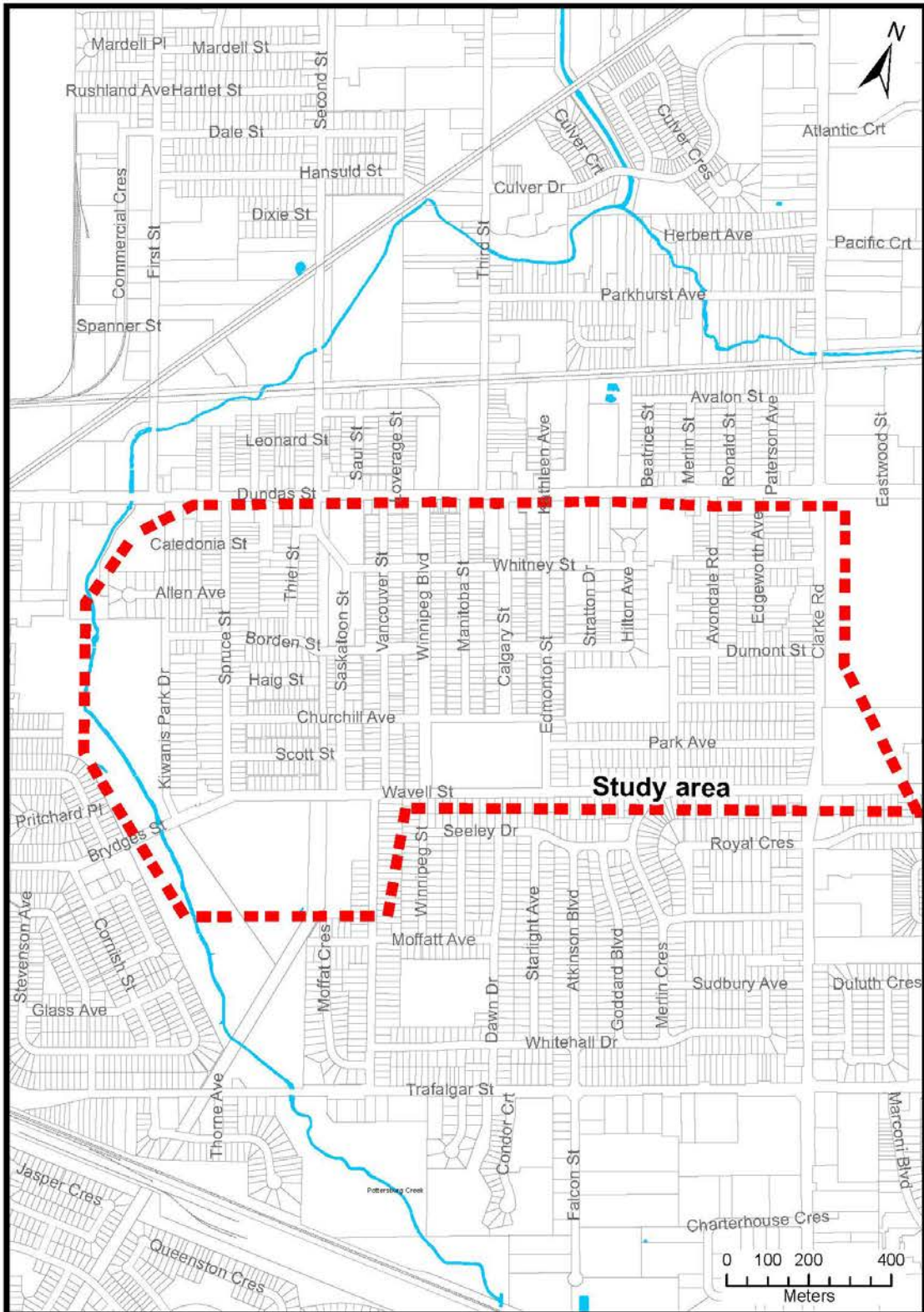


London
CANADA

2018 Infrastructure Renewal Program

Engineering Assignment 8 - Location Map

Storm Sewer & Water Servicing Study
(Area generally bound by Vancouver Street - Wavell Street -
Pottersburg Creek - Dundas Street)





2019 Infrastructure Renewal Program

Assignment A - Location Map

Egerton Street Phase 2 (from Pine Street to Hamilton Street)
Brydges Street (from Egerton Street to Douglas Court)
Pine Street (from Egerton Street to Oak Street)

Includes complete reconstruction of Hamilton - Egerton - Trafalgar intersection

