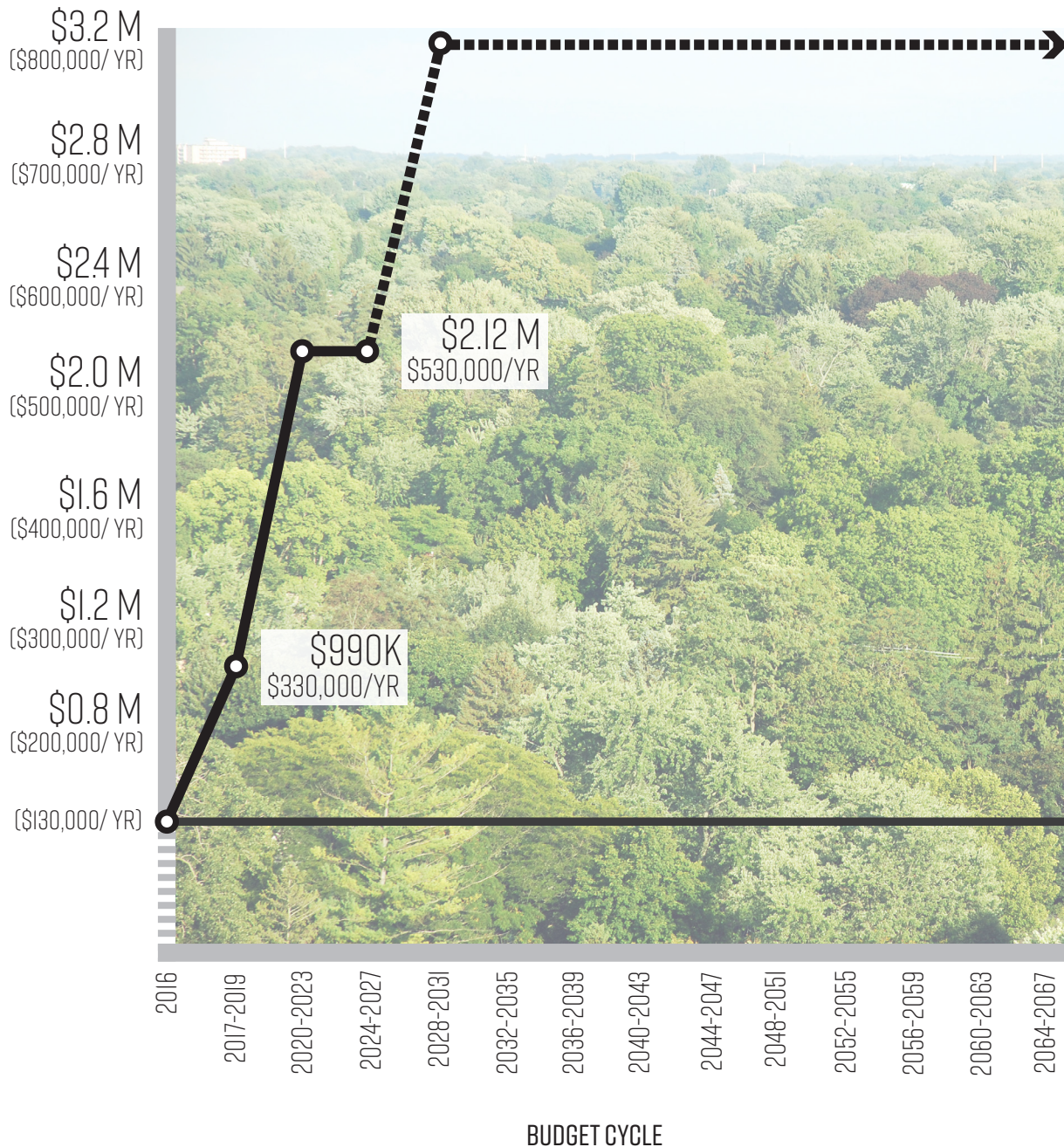


PRIVATE TREE INCENTIVES

The City spent \$1.63 million in 2016 on tree planting, of which \$130,000 went towards incentives for tree planting on private lands.

DOLLARS ALLOCATED TO PRIVATE INCENTIVES PER 4-YEAR BUDGET CYCLE

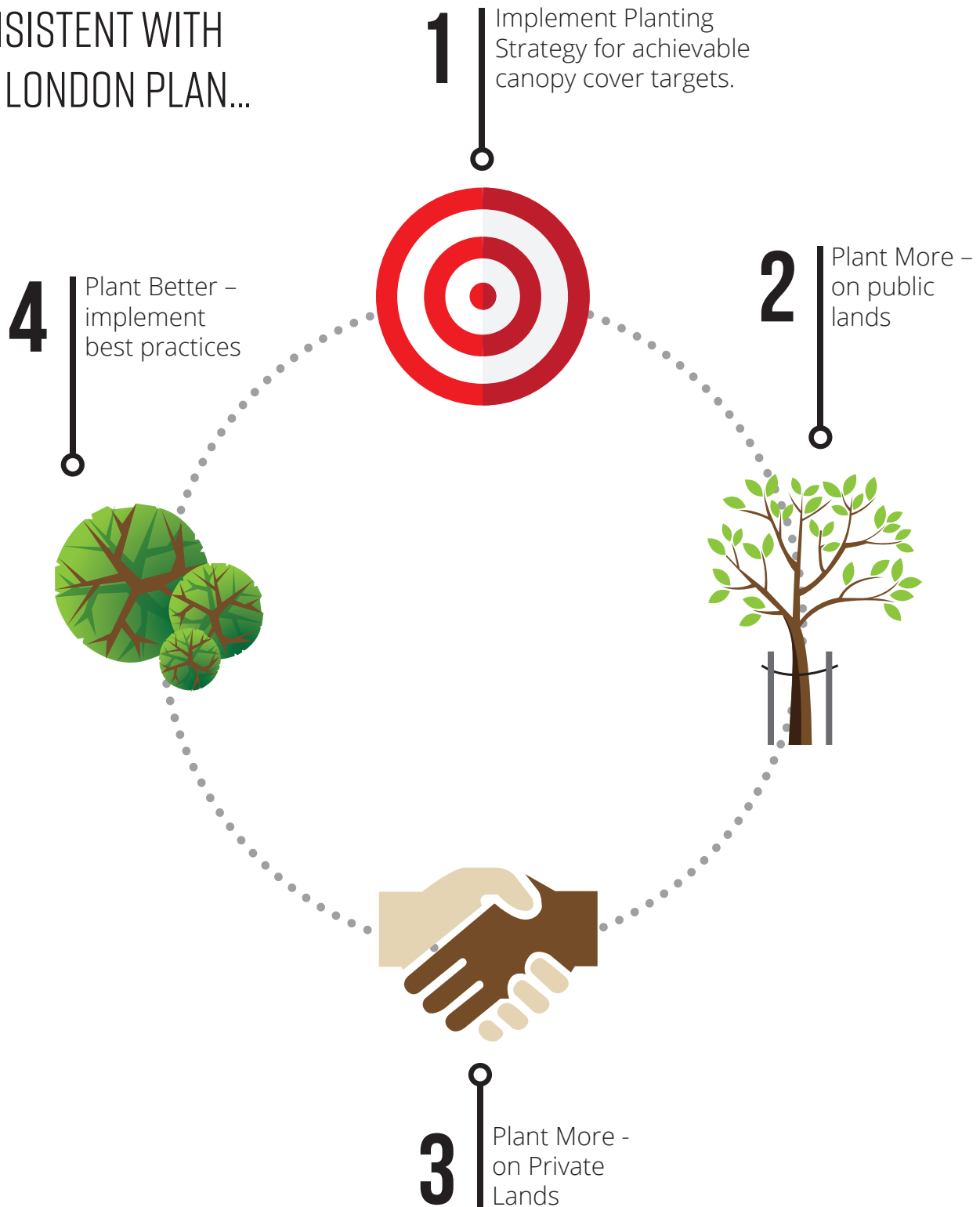


NOTE: Incentives may be leveraged to initiate more tree planting on private property. To remain on target, incentives may rise to \$800,000 per year by 2028.

PLANT MORE; PLANT BETTER

The City shall increase the number of trees planted, reduce tree mortality and increase average tree life expectancy to achieve our goal.

CONSISTENT WITH
THE LONDON PLAN...



ACTIONS



I. IMPLEMENT PLANTING STRATEGY FOR ACHIEVABLE CANOPY COVER TARGETS

**2017- 2023
(to achieve
it) and then
continuing**

Reduce new tree mortality in year 1 to 4% or less, and no more than 3% mortality in year 2 and 2% mortality in year 3 with watering strategy.

2017 onwards

Implement a long term communications strategy to educate and engage citizens about tree protection and planting goals.

2018

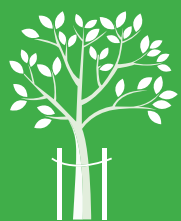
Assess and implement contract-growing of suitable trees in a range of sizes to supply future needs.

2018 onwards

Plant the largest-growing and longest-lived species suitable for that location.

2020 onwards

Prioritise City planting by (1) low tree canopy cover areas (2) largest area available (3) ease of planting.



2. PLANT MORE – ON PUBLIC LANDS

**2017 (already
underway**

Naturalise wherever possible.

2018

Conduct cost: benefit analysis for enhanced Downtown tree planting.

2018 onwards

Identify and protect potentially plantable boulevard space before licensing for private purposes.

2018 onwards

Assess encroachments of City lands and implement restoration or licensing; allocate realised fees to tree planting and tree maintenance programs.

2020

With London Hydro, achieve appropriate planting of small, medium and large stature trees within tree-height distance of power lines.

2020 onwards

Maximise shade tree planting on public lands.

2020 onwards

Plant more climate appropriate conifers.

2020 onwards

Utilize vacant public lands for tree planting.

2020 onwards

Prepare detailed 5-year planting plans by neighbourhood, to enhance the urban landscape and restore heritage or cultural landscapes.