

**5TH REPORT OF THE**  
**LONDON ADVISORY COMMITTEE ON HERITAGE**

Meeting held on April 12, 2017, commencing at 5:30 PM, in Committee Rooms #1 and #2, Second Floor, London City Hall.

**PRESENT:** D. Dudek (Chair), S. Adamsson, D. Brock, J. Cushing, H. Elmslie, H. Garrett, S. Gibson, J. Manness, B. Vasquez, K. Waud and M. Whalley and J. Bunn (Secretary).

**ABSENT:** T. Jenkins.

**ALSO PRESENT:** R. Armistead, J. Dent, L. Dent, J. Fullick, K. Gonyou, M. Spinks and S. Wise.

---

**I. CALL TO ORDER**

1. Disclosures of Pecuniary Interest

That it BE NOTED that H. Garrett disclosed a pecuniary interest in the following clauses:

- a) clause 10 of this Report, having to do with the Notice of Application by Rygar Corporation Inc. for the properties located at 150 Dundas Street and 153 Carling Street, by indicating that her employer is the agent for the applicaiton; and,
- b) clause 11 of this Report, having to do with the Notice of Application by Ontario 2049401 Ltd. for the properties located at 555-557 Ridout Street North, by indicating that her employer is the agent for the application.

**II. SCHEDULED ITEMS**

2. Victoria Bridge Heritage Impact Assessment

That it BE NOTED that the London Advisory Committee on Heritage (LACH) supports the Victoria Bridge Heritage Impact Assessment as presented; it being noted that the LACH heard the attached presentation from M. Greguol, J. Pucchio and N. Martin, from AECOM, with respect to this matter.

3. Cultural Heritage Interpretive Signs: Graham Arboretum, Westminster Ponds/ Saunder's Cabin

That it BE NOTED that the attached presentation from S. Norton, City of London Culture Office, related to Cultural Heritage Interpretive Signs for the Graham Arboretum and Westminster Ponds/Saunder's Cabin, was received.

**III. CONSENT ITEMS**

4. 4th Report of the London Advisory Committee on Heritage

That it BE NOTED that the 4th Report of the London Advisory Committee on Heritage, from its meeting held on March 8, 2017, was received.

5. Municipal Council Resolution from its session held on March 21, 2017 with respect to the 3rd Report of the London Advisory Committee on Heritage

That it BE NOTED that the Municipal Council resolution, from its session held on March 21, 2017, with respect to the 3rd Report of the London Advisory Committee on Heritage, was received.

6. North Talbot Neighbourhood Association - Invitation

That it BE NOTED that the invitation from E. Di Trolio, North Talbot

Neighbourhood Association, for the community meeting April 11, 2017 to expedite a Heritage Designation for the North Talbot Community, was received.

7. Commissioners Road Realignment Class Environmental Assessment Study - Notice of Public Information Centre No. 1

That it BE NOTED that the Notice from S. Keen, Project Manager and T. Koza, City of London, dated March 14, 2017, with respect to the Commissioners Road Realignment Class Environmental Assessment Study Notice of Public Information Centre No. 1, was received.

8. Ministry of Government and Consumer Services - Land Registry Office

That it BE NOTED that the letter dated March 22, 2017, from D. Blais, Ministry of Government and Consumer Services, with respect to the Municipal Heritage Committees' access to the Land Registry Office, was received.

9. Revised Notice - Music, Entertainment and Culture Districts Feasibility Study

That it BE NOTED that the Revised Notice from C. Parker, Senior Planner, related to the Music, Entertainment and Culture Districts Feasibility Study, was received.

10. Notice of Application - Rygar Corporation Inc. - 150 Dundas Street and 153 Carling Street

That the Civic Administration BE ADVISED that, in the opinion of the London Advisory Committee on Heritage (LACH), the application by Rygar Corporation Inc. relating to the properties located at 150 Dundas Street and 153 Carling Street, does not have any adverse impacts to the on-site heritage resources; it being noted that given the premiere location, the Heritage Impact Statement does not adequately address the following impacts to downtown heritage resources:

- first story articulation, including transparency of first floor glass, and a smaller scale, pedestrian-friendly scale, in keeping with the Downtown Heritage Conservation District;
- more significant design characteristics of the entire tower with more attention paid to the top in order to make it a skyline feature; and,
- a podium setback of 5 metres, increased from 3 metres, on both street fronts in compliance with the Heritage Conservation District guidelines.

11. Notice of Application - Ontario 2049401 Ltd. - 555-557 Ridout Street North

That it BE NOTED that the Notice from B. Turcotte, Senior Planner, dated March 29, 2017, with respect to the application by Ontario 2049401 Ltd. related to the properties located at 555-557 Ridout Street North, was received.

12. Notice of Application - Sifton Properties Limited - 221 Queens Avenue

That Civic Administration BE ADVISED that the London Advisory Committee on Heritage (LACH) supports a one year extension of the temporary operation of a commercial parking lot as per the application by Sifton Properties Limited with respect to the property located at 221 Queens Avenue; it being noted that the LACH encourages the redevelopment of vacant spaces in the downtown Heritage Conservation District.

#### IV. SUB-COMMITTEES & WORKING GROUPS

13. Stewardship Sub-Committee

That it BE NOTED that the Stewardship Sub-Committee report from its meeting held on March 29, 2017, was received.

**V. ITEMS FOR DISCUSSION**

14. 2016 and 2017 Work Plans

That the following actions be taken with respect to the London Advisory Committee on Heritage (LACH) Work Plan:

- a) the attached 2017 Work Plan for the LACH BE FORWARDED to the Municipal Council for consideration; and,
- b) the attached 2016 LACH Work Plan Summary BE FORWARDED to the Municipal Council for information.

15. Advisory Committee Brochures

That the initiative of creating a committee information brochure for the London Advisory Committee on Heritage BE REFERRED to the Education Sub-Committee.

16. Heritage Planners' Report

That the Committee Secretary BE REQUESTED to place the staff report related to vacant unit rebates and vacant/excess land subclass tax reductions, listed as item number 5 on the Heritage Planners' Report, on the May agenda of the London Advisory Committee on Heritage; it being noted that the attached submission from K. Gonyou and L. Dent, Heritage Planners, with respect to various updates and events, was received.

**VI. DEFERRED MATTERS/ADDITIONAL BUSINESS**

17. (ADDED) Victoria Bridge - Municipal Class Environmental Assessment - Notice of Public Information Centre #1

That it BE NOTED that the Notice of Public information Centre #1 from K. Grabowski, City of London and J. Pucchio, AECOM, dated April 10, 2017, with respect to the Victoria Bridge Municipal Class Environmental Assessment, was received.

18. (ADDED) That it BE NOTED that the Committee Secretary provided the Chair and members of the London Advisory Committee on Heritage with copies of the Spring 2017 Community Heritage Ontario Newsletter.

**VII. ADJOURNMENT**

The meeting adjourned at 8:21 PM.

**NEXT MEETING DATE: May 10, 2017**

# Victoria Bridge Heritage Impact Assessment Municipal Class EA

Michael Greguol, M.A., Cultural Heritage Specialist  
John Pucchio, P. Eng., Project Manager

April 12, 2017



## Introduction

- **Project Context**
  - Previous work
  - Class Environmental Assessment
- **Cultural Heritage Evaluation Report**
  - Statement of Cultural Heritage Value
  - Heritage Attributes
- **Existing Conditions**
  - Heritage Attributes
  - Structural
- **EA Alternatives and Conservation Options**
- **Recommendations**
- **Next Steps**

Victoria Bridge – Heritage Impact Assessment

April 12, 2017

Page 2



## Project Context

2016

Structural Evaluation

Preliminary Structural Design Report

Cultural Heritage Evaluation Report



Victoria Bridge – Heritage Impact Assessment

April 12, 2017

Page 3



## Municipal Class Environmental Assessment

2017

Class Environmental Assessment – Evaluate rehabilitation or replacement alternatives. Full range of alternatives are evaluated along with their impacts on social, economic, natural, and cultural environment.

### Problem/Opportunity:

Constructed in 1926, Victoria Bridge is located on Ridout Street over the south branch of the Thames River in the City of London. Ridout Street is an important link to downtown and a designated north-south bicycle route. However, Victoria Bridge does not have sufficient width to accommodate dedicated bicycle lanes which is a safety concern. Recent bridge inspections also identified ongoing issues of deterioration which may reduce the structural capacity of the bridge. Given the age of the bridge, existing conditions, functional deck width, structural capacity, potential heritage value and other considerations, the Class EA study should identify a solution to address structural deficiencies and accommodate all users through bridge rehabilitation or replacement.



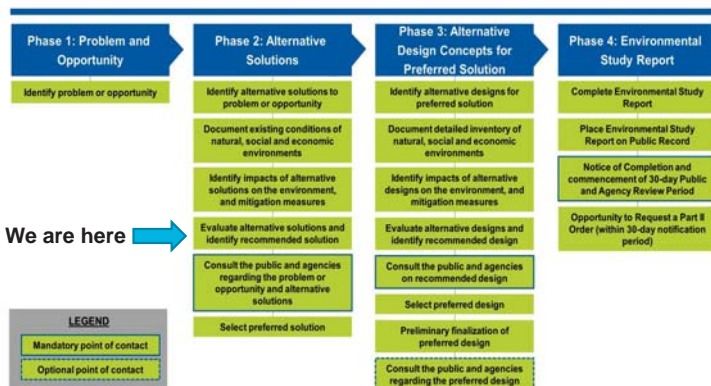
Victoria Bridge – Heritage Impact Assessment

April 12, 2017

Page 4



## Municipal Class Environmental Assessment



Victoria Bridge – Heritage Impact Assessment

April 12, 2017

Page 5



## Background History

- 4<sup>th</sup> bridge crossing (1848, 1863, 1875, 1926)
- 1926, John Rostron, municipal engineer
- Steel, pony truss
- Hamilton Bridge Company
- Stone/concrete abutments
- Approaches



1875-1925

Victoria Bridge – Heritage Impact Assessment

April 12, 2017

Page 6



## Background History



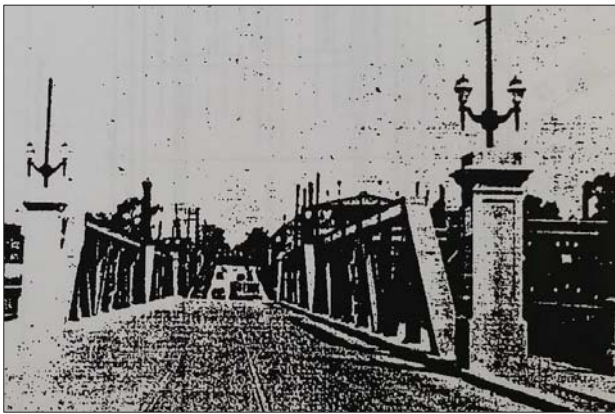
Under construction, 1925

## Background History



Under construction, 1925

## Background History



Canadian Engineer, 1927

## Cultural Heritage Value or Interest

### Ontario Regulation 9/06

- Design/Physical
- Historic/Associative
- Contextual

### Heritage Attributes

- Riveted, modified Warren truss structure with seven panels;
- Remnants of decorative stone and concrete end post at north abutment;
- Decorative lamp posts in centre of the bridge spans;
- Bridge skew evident in abutments, pier and truss alignments; and
- Hand railings original to the design of the bridge.

### Statement of Cultural Heritage Value

*The Victoria Bridge, is a seven panel modified Warren steel-pony truss bridge that carries Ridout Street over the South Branch of the Thames River. The two-span structure was built in 1926 as the fourth crossing of the Thames River at this location. It was designed by municipal engineer John R. Rostron as an elegant but affordable design that would utilize the remaining stone abutments and pier from the previous bridge at this crossing. As such, the concrete pier and abutments at the Victoria Bridge also include an undetermined amount of stone that has been encased in the concrete since 1926. The bridge is one of several historic truss crossings of the Thames River in London.*

## Existing Conditions – Heritage Attributes



Riveted, modified Warren truss structure with seven panels

## Existing Conditions – Heritage Attributes



Remnants of decorative stone and concrete end post at north abutment

## Existing Conditions – Heritage Attributes



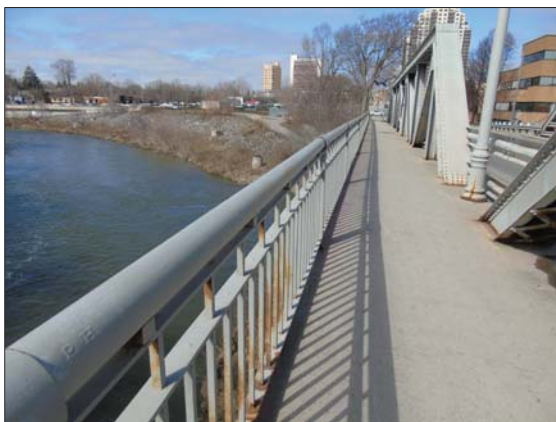
Decorative lamp posts in centre of the bridge spans

## Existing Conditions – Heritage Attributes



Bridge skew evident in abutments, pier and truss alignments

## Existing Conditions – Heritage Attributes



Hand railings original to the design of the bridge

## Existing Conditions - Structural

- **Structural deficiencies**
  - Deck
  - Barrier systems
  - Steel components (stringers, and misc. members)
  - Steel roller bearings
  - Piers and abutments



## EA Alternatives

- **“Do Nothing”**
- **Alternative A – Major Rehabilitation**
- **Alternative B – Repurpose for Active Transportation, New Bridge Downstream**
- **Alternative C – Eliminate Bridge, New Bridge on Existing Alignment**
- **Alternative D – Eliminate Bridge, New Bridge on New Alignment Downstream**
- **Alternative E – Minimal Rehab (temporary), New Bridge at end of service life**

## Conservation Options

*The MTO Ontario Heritage Bridge Guidelines conservation options were used to evaluate the replacement or rehabilitation alternatives of the Victoria Bridge.*

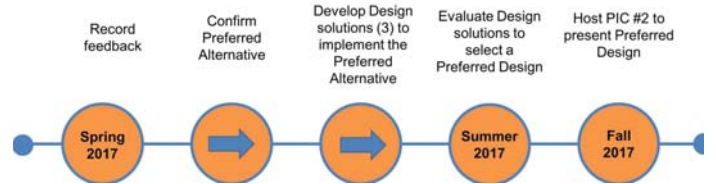
1. Retention of existing bridge with no major modifications undertaken (Do Nothing)
2. Restoration of missing or deteriorated elements where physical or documentary evidence exists for their design
3. Retention of existing bridge with sympathetic modifications
4. Retention of existing bridge with sympathetically designed new structure in proximity
5. Retention of existing bridge no longer in use for vehicular purposes but adapted for a new use.
6. Retention of bridge as a heritage monument for viewing purposes only.
7. Relocation of smaller, lighter single span bridges to an appropriate new site for continued use or adaptive re-use
8. Bridge removal and replacement with a sympathetically design structure.

## Recommendations

- For HIA, most preferred Alternative is A (Major Rehabilitation)/Option 3 (Retention of existing bridge with sympathetic modifications)
- If not feasible, Alternative C (Replacement on existing alignment)/Option 8 (Replacement with sympathetically designed structure)
- No planning solution selected yet for EA
- Mitigation strategies are dependent upon selected alternative for EA
  - Sympathetic Rehabilitation
  - Sympathetic Replacement

## Next Steps

- **Identify Preferred Alternative for EA**
  - Confirm heritage mitigation strategy as necessary
- **Public Information Centre (PIC)**
  - April 26, 2017, 5:00 pm – 7:00 pm
  - St. James Westminster Anglican Church – 115 Askin Street, London
  - <http://www.london.ca/residents/Environment/EAs/Pages/default.aspx>.



# Graham Arboretum & Saunders Cabin/Westminster Pond

Interpretative Signage

# Graham Arboretum

- Approximately 6 acres
- Contains hundreds of trees and shrubs, documentation of species plants (past and present) can be found
- At one time, all species present were accompanied by lead embossed plaques
- Has connections with the City of London, The Experimental Farm in Ottawa and the Saunders family/Saunders Cabin

## Graham Arboretum/Springbank Park Timeline 18??-1911



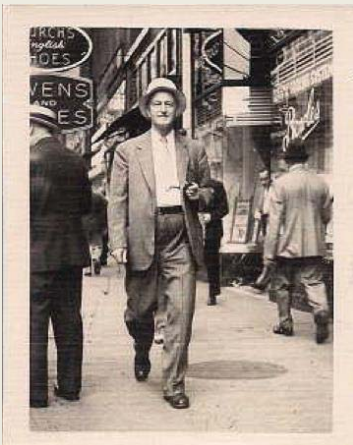
- 18?? – 48 acres purchased from Coomb's and Tunk's
- May 25<sup>th</sup>, 1881- Steamboat Victoria leaves Springbank park, over capacity and sank off the Coves, killing approximately 200 people.
- 1892 – Springbank Pavilion (Dance pavilion) built. Popular in 1920's-30's.
- 1894 – First clearing a preparation on land for public use
- May 25<sup>th</sup>, 1895 – Street Rail Company tracks through park were opened
- 1896 – Under the Water Commissioner, John Mackenzie Moore (Architect) worked on Springbank Park (Mayor of London 1926-1927)
- 1897 – Purchased, Griffith property west of Colville at Byron

## Graham Arboretum/Springbank Park Timeline 1912-1925



- 1912 – Board of Water Commissioners given control of London's Park system. (BoWC purchased over 400 acres for waterworks split between Springbank and Thames Park, compared to >50 acres managed by the City.)
- 1912 – Springbank land totalling 395 acres (From Woodland to Byron along River Thames)
- June 12, 1913 – "10,000 people attend outing of London kiddies." LFP
- 1914 – Board of Water Commissioners renamed that Public Utilities Commission
- 1915 – Zoo opened at Springbank Park
- 1920 – Miniature railway introduced by Mrs. Sarah Stevenson
- 1920 – Merry-go-round opened but later moved to Burlington
- 1922 – Commission converted old camp grounds at Wonderland into a tourist motor camp. Water, electricity, cook stoves, and lavatory accommodations were provided free of charge. This is believed to have been the first such camp in North America.
- 1920's-30's – Annual School Picnics

## Ernest Edwin Graham (1878-1930)



- City of London Parks Superintendent– 1919 – 1930
- Began plans for the Graham Arboretum in 1926 alongside T.W. McFarland
- Most of the current species of trees and shrubs were planted between 1929 and 1930
- Graham never saw the Arboretum completed, he died shortly thereafter
- Following his death, the next superintendent would lead the second expansion
- Goals:
  - To serve the people of London and area
  - As a repository of native and exotic trees
  - And as a centre of Education

## W.E. (Ted) Foster



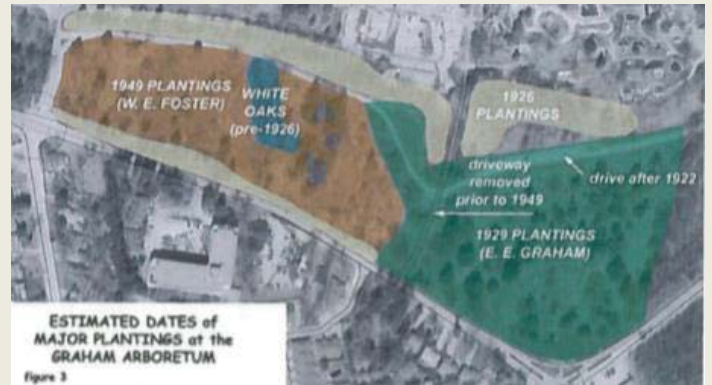
- City of London Superintendent 1930 – 1960's
- President of the Ontario Horticultural Association in 1940
- Spearheaded the second of the two main expansions to the arboretum in 1949
- Recommended the creation of the Women's Garden
- Crabapple trees gifted to the London Local Council of Women by their creator, Miss Isobel Preston of the Ottawa Experimental Farm
- Oversaw the planting of over 300 new specimens in the arboretum



## Timeline 1930 -Today

- 1930 – Motor camp discontinued
- 1935 – Street car line to Springbank park discontinued
- Mid 1930's – Outdoor dance area and swimming pool opened.
- 1937 – Road from zoo to the Port Stanley Rd. (North Rd) was paved
- 1940 – New road completed through the park
- 1941- Outdoor dance area becomes covered and later enclosed
- 1949 – Arboretum expanded by Ted Foster (Superintendent for 30 years) (2<sup>nd</sup> expansion), he introduced several new types of trees and plants
- Early 1950's – Zoological Gardens, all that remained were bird and monkey cages
- March 17, 1951 – Established on the instigation of the London Local Council of Women and with the cooperation for the London PUC. Garden to be planted with plants introduced by women horticulturalists. 150 Crabs developed by Miss Isabella Preston, Ottawa Horticulturalist
- June 26<sup>th</sup>, 1958 – Zoological Gardens replaced by Storybook Gardens
- 1958 – Springbank Pavilion shut-down
- early 1960's – Springbank Pavilion torn down.
- 1973 – Springbank land totalling 350 acres
- Currently home to approximately 80 species of native and exotic tree species.

## Planting Timeline



## Isobel Preston (1881 – 1965)



- 1912-1920 – Guelph Department of Horticulture student and professors assistant
- 1920, accepted position at Central Experiment Farm (CEF) in Ottawa
- Worked at the CEF for 26 years
- Became one of the first women to enter the horticulture industry
- Developed over 200 plant hybrids
- Considered “...one of Canada’s most successful breeders of ornamental plants.”
- Worked with: lilies, lilac, rose, columbine, Siberian iris and crabapple

## Saunders

### Cabin/Westminster Ponds



- Lot 24, Concession 1, Westminster Twp.
- Walker family arrived in 1842, son James Walker received the property later belonging to W.E. Saunders
- Home of William Ernest Saunders, 1913 – 1943
- Saunders initial purchase was 30 acres, later he added another 50 acres in 1918.
- Land was expropriated by the government in 1943
- Across Saunders Pond sat veterans care centre, c. 1945 - 1989
- No known photographs or descriptions of cabin
- Only footings of cabin still remain
- Site officially marked in August 2007

- Lots 23 and 24, 1878

## William Saunders (Sr.) (1836 – 1914)



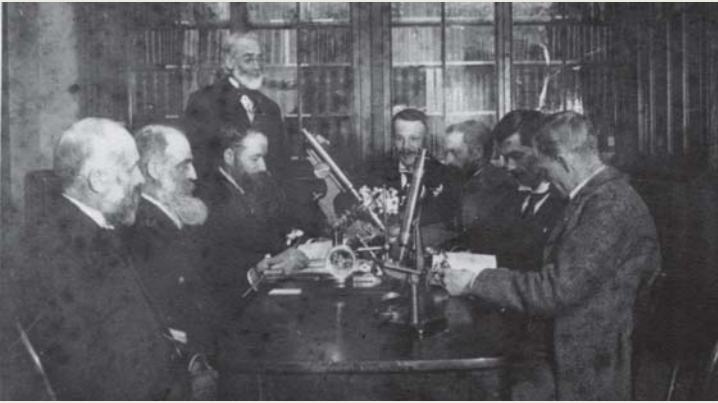
- Influential in studying and preventing infestations and diseases affecting crops
- Using science to tackle agricultural issues, his work promoted growth in Western Canada
- Set up the Dominion Experimental Farms system in 1886, leaving his pharmaceutical business to his sons
- First gentleman in Canada to receive several honorary distinctions from Scientific Societies in the US
- Honorary Member of Maryland College of Pharmacy, and Philadelphia College of Pharmacy Corresponding Member
- Saunders, W. 1880 ‘ is analyzing bloodstained clothing found in homes of the accused in the Donnelly murder case.’ L.F.P.
- Passed away in Sept. 1914 at son (W.E. Saunders) home, Saunders Cabin

## William Edwin Saunders (Jr.) (1861 – 1943)



- Professor of practical chemistry of London Medical School from 1884-1889
- 1929-1943, wrote the ‘Nature Week by Week’ column in the LFP
- 1931 - 1943, named the first president of the Federation of Ontario Naturalists
- Active member of Ontario Entomological Society
- Founder of London Horticultural Society, the ‘Bird Club’, McIlwraith Field Nationalists Society and the London and Middlesex Historical Society
- Honored with Doctor of Laws degree from Western University in 1936
- Recipient of first ever Horticultural Service Diploma from the London Horticultural Society in 1939

## The Microscopical Society



"William Edwin Saunders possibly contributed more than anyone else to the preservation and study of our natural world." Cliff Oliver

## Saunders Heritage Sites



- W. Saunders – mid 1860's – 1886 at 380 Dundas St. (today is Campbell Memorial Park) – Donated to city in 1951
- Mysterious fire destroyed Dundas St. Drug store, 1874
- 1887 – 1911 – William Saunders lived in Ottawa while working at the Experimental Farm
- W.E. Saunders lived at 240 Central Ave. in 1888
- W.E. Saunders & Co. c. 1892. 392-3 Clarence St. (demolished) Underneath the Downtown Plaza
- Saunder's Pharmacy located in YWCA at 184-190 King Str. (as of 1921 directory) Today is 183 King Str. (still standing)
- Saunders Cabin – 1913 – 1943. Lot 24, Concession 1, Westminster Twp.

## Connection Saunders Cabin and the Graham Arboretum

- Architect John Mackenzie Moore (1857-1930) (London Mayor 1826-1927)- was involved in the designing of both Springbank Park and the W.E. SAUNDERS & CO., warehouse at 392-3 Clarence St. near King St., c. 1892.
- William Saunders was the Director of the Central Experimental Farm of Ottawa and a predecessor to Isobel Preston.
  - Both involved in horticulture.
  - London's Local Council of women were specifically creating a Women's Garden in 1951 that showcased the works of female horticulturalists, Isobel Preston being one of the most famous.
- Ms. Preston's hybrids "... were chosen to play a prominent part in development of the garden because they are native to this country, are hardy and colourful." LFP

**Thank You**

**LONDON ADVISORY COMMITTEE ON HERITAGE  
2017 WORK PLAN  
(Feb 28, 2017)**

	<b>Project/Initiative</b>	<b>Background</b>	<b>Lead/ Responsible</b>	<b>Proposed Timeline</b>	<b>Proposed Budget (in excess of staff time)</b>	<b>Link to Strategic Plan</b>	<b>Status</b>
1.	<p>-Recurring items as required by the Ontario Heritage Act (consider and advise the PEC (Planning and Environment Committee) on matters related to HAPs (Heritage Alteration Permits), HIS (Heritage Impact Statement) reviews, HCD (Heritage Conservation District) designations, individual heritage designations, (etc.);</p> <p>-Research and advise the PEC regarding recommendations for additions to the heritage register;</p> <p>-Prioritize and advise the PEC on top recommendations for heritage designation (final number to be determined by available time – taken from the heritage registry and elsewhere as appropriate);</p> <p>-Consider and advise the PEC on ad hoc recommendations from citizens in regard to individual and district heritage designations and listings to the heritage register (refer to Stewardship for advice);</p> <p>-Perform all other functions as indicated in the LACH Terms of Reference.</p>	<ul style="list-style-type: none"> <li>• Section 28 of the Ontario Heritage Act mandates that the City shall establish a municipal heritage committee. Further, Council shall consult with that committee in accordance with the Ontario Heritage Act;</li> <li>• Please see the <u>London Advisory Committee on Heritage: Terms of Reference</u> for further details;</li> <li>• The LACH supports the research and evaluation activities of the LACH Stewardship Subcommittee, Policy and Planning Subcommittee, Education Subcommittee, Archaeological Subcommittee, and all other LACH Subcommittees which may serve from time to time.</li> </ul>	LACH (main) and subcommittees	As required	None	Strengthening our Community 4d; Building a Sustainable City 1c, 6b; Growing our Economy 1f, 2d	Ongoing
2.	Introduce all represented organisations and individuals on LACH at the first meeting of the new year, discuss member background and areas of knowledge/ expertise, and consider possible changes or additions.	<ul style="list-style-type: none"> <li>• The LACH is made of a diverse and knowledgeable group of engaged individuals, professionals and representatives of various organizations. Once per year (or when a new member joins the committee) each member will introduce themselves to the committee and provide his/her relevant background.</li> </ul>	LACH (main)	January meeting	None	Building a Sustainable City 6b	<b>Completed</b>

	<b>Project/Initiative</b>	<b>Background</b>	<b>Lead/ Responsible</b>	<b>Proposed Timeline</b>	<b>Proposed Budget (in excess of staff time)</b>	<b>Link to Strategic Plan</b>	<b>Status</b>
3.	Ontario Heritage Act enforcement.	<ul style="list-style-type: none"> <li>The LACH will assist in identifying properties that have not obtained necessary approvals, and refer these matters to civic administration. The LACH will assist in monitoring alterations to HCD and heritage designated properties and report deficiencies to civic administration.</li> </ul>	LACH (main)	Ongoing	None	Building a Sustainable City 6b	Ongoing
4.	The St George Grosvenor HCD (Heritage Conservation District) Study and Plan, Great Talbot HCD Plan, Gibbons Park HCD Plan.	<ul style="list-style-type: none"> <li>The St George Grosvenor HCD Study is complete resulting in the Great Talbot HCD and Gibbons Park HCD. The LACH will monitor, assist and advise in the preparation of the both plans, following the timeline as approved by Council.</li> </ul>	LACH (main)	2017 Plan Completion	None	Building a Sustainable City 6b	Ongoing
5.	The Soho HCD (Heritage Conservation District) Study.	<ul style="list-style-type: none"> <li>The Soho HCD Study will begin in 2017. The LACH will monitor, assist and advise in the preparation of the Soho HCD study.</li> </ul>	LACH (main)	2017 Study Completion	None	Building a Sustainable City 6b	Ongoing
6.	Property insurance updates.	<ul style="list-style-type: none"> <li>The LACH will monitor, assist and advise on matters pertaining to the securing of property insurance for heritage designated properties in the City of London.</li> </ul>	Policy and Planning Sub-Committee	Ongoing.	None	Building a Sustainable City 6b	With Policy and Planning Sub-Committee
7.	City Map updates.	<ul style="list-style-type: none"> <li>The LACH will work with City staff to ensure that 'City Map' and searchable City databases are up to date in regard to the heritage register/ designations/ districts/ etc.</li> </ul>	Policy and Planning Sub-Committee	Ongoing	None	Building a Sustainable City 6b	With Policy and Planning Sub-Committee
8.	HIS (Heritage Impact Statement) reporting changes.	<ul style="list-style-type: none"> <li>The LACH will support staff in their efforts to formalize an approach to reviewing and advising on HIS reports (including what triggers the reports, expectations, and who completes them.</li> </ul>	Policy and Planning subcommittee	TBD	None	Building a Sustainable City 6b	Partial Complete
9.	New and ongoing heritage matters.	<ul style="list-style-type: none"> <li>Through its connections to various heritage groups, and the community at large, the LACH is aware of emerging and ongoing heritage matters in the City of London. The LACH will monitor and report to City staff and PEC on new and ongoing cultural heritage matters where appropriate. (ex. Ontario Cultural Strategy, Community Economic Roadmap, etc.).</li> </ul>	LACH (main)	As required	None	Building a Sustainable City 6b	As required

	<b>Project/Initiative</b>	<b>Background</b>	<b>Lead/ Responsible</b>	<b>Proposed Timeline</b>	<b>Proposed Budget (in excess of staff time)</b>	<b>Link to Strategic Plan</b>	<b>Status</b>
10.	Archaeological Master Plan completion.	<ul style="list-style-type: none"> <li>The LACH is generally aware of ongoing archaeological matters in the City of London through the Archaeological subcommittee, and connections to the archaeological community in London. The LACH will work with City staff to complete the Archaeological Master Plan currently underway.</li> </ul>	Archaeological subcommittee	Q2 2017	None	Building a Sustainable City 6b	The Archaeological Master Plan has been initiated
11.	The Mayor's New Year Honour List recommendation.	<ul style="list-style-type: none"> <li>For a number of years, members of the LACH have been asked to provide advice to Council on the heritage addition to the "Mayor's New Year Honour List". The LACH will continue to serve this function as requested to do so by Council.</li> </ul>	Ad hoc committee of the LACH	Generally in the fall of each year	None	Building a Sustainable City 6b	Annually
12.	Provide advice to the London Community Foundation on heritage grant distribution.	<ul style="list-style-type: none"> <li>For a number of years, members of the LACH have been asked to provide advice to the London Community Foundation on heritage grant distribution: "The London Endowment Fund for Heritage". The LACH will continue to serve this function as requested to do so by the Foundation.</li> </ul>	Ad hoc committee of the LACH	Generally in April of each year	None	Building a Sustainable City 6b	Annually
13.	Conference attendance.	<ul style="list-style-type: none"> <li>For a number of years, members of the LACH have attended the Ontario Heritage Conference when available. This conference provides an opportunity for LACH members to meet with other heritage committee members and heritage planning professionals, and to learn about current and ongoing heritage matters in the Province of Ontario (and beyond). Up to four (4) members of the LACH will attend the Ontario Heritage Conference.</li> </ul>	LACH (main)	May 2016	Up to \$2000 (if 4 members attend)	Building a Sustainable City 6b	Annually
14.	Public awareness and education (& possible heritage fair/ day/ symposium).	<ul style="list-style-type: none"> <li>The LACH initiates, assists and/or advises on education and outreach programs to inform the citizens of London on heritage matters. This year, the LACH will also consider contributing to the organization of a city wide heritage fair/ day/ symposium (to provide information and outreach including –</li> </ul>	Education subcommittee	Ongoing	\$500	Building a Sustainable City 6b	Ongoing – in progress

	Project/Initiative	Background	Lead/ Responsible	Proposed Timeline	Proposed Budget (in excess of staff time)	Link to Strategic Plan	Status
		HAP process, professional advice on repairs and maintenance, current research on heritage matters, insurance advice, real estate matters, and a general exchange of ideas (etc.)). The LACH will coordinate with the efforts of the Historic Sites Committee of the London Public Library.					
15.	Public awareness and education collaboration with the London Heritage Council.	<ul style="list-style-type: none"> <li>The LACH will be supported by the London Heritage Council in its role to promote public awareness of and education on the community's cultural heritage resources. Collaborative initiatives may include LACH-related news updates in the LHC newsletter, LACH involvement in LHC programming and events (i.e. Heritage Fair), outreach support, and/or school-related programming as part of Citizen Culture: Culture-Infused LEARNING (LHC and London Arts Council).</li> </ul>	LACH (main) and Education subcommittee in collaboration with the London Heritage Council	Ongoing	\$500	Building a Sustainable City 6b	Annually
16.	LACH member education/ development.	<ul style="list-style-type: none"> <li>Where possible, the LACH will arrange an information session for LACH members to learn more about the Ontario Heritage Act, and the mandate and function of Heritage Advisory Committees. The LACH will also explore ongoing educational opportunities for LACH members (such as walking tours, meetings with heritage experts/ professionals, meetings with community leaders, etc.).</li> </ul>	LACH (main)	Ongoing	\$500	Building a Sustainable City 6b	Ongoing
17.	City of London Archives.	<ul style="list-style-type: none"> <li>The LACH will continue to discuss and advise on possible locations (and contents) for a City of London Archives.</li> </ul>	LACH (main)	Ongoing	None	Building a Sustainable City 6b	Ongoing
18.	LACH subcommittee member outreach.	<ul style="list-style-type: none"> <li>The LACH will continue to reach out to heritage and planning professionals/ experts to serve on LACH subcommittees (and advise the LACH on certain matters).</li> </ul>	LACH (main)	Ongoing	None	Building a Sustainable City 6b	Ongoing

	<b>Project/Initiative</b>	<b>Background</b>	<b>Lead/ Responsible</b>	<b>Proposed Timeline</b>	<b>Proposed Budget (in excess of staff time)</b>	<b>Link to Strategic Plan</b>	<b>Status</b>
19.	Heritage signage and plaque placement/funding.	<ul style="list-style-type: none"> <li>Through its connections to various heritage groups, and the community at large, the LACH is generally aware of potential locations for heritage signage and plaques. The LACH will consult with City Staff and heritage groups in regard to the occasional placement of heritage signage and/or plaques (and assist with funding where deemed appropriate by the committee). These efforts will be considered in the context of the City of London Heritage Interpretative Signage Policy.</li> </ul>	Education subcommittee	Ongoing	\$4500	Building a Sustainable City 6b	Ongoing
20.	Council outreach.	<ul style="list-style-type: none"> <li>If requested, the LACH will arrange an information session for Council members to learn more about the mandate and function of the LACH, the Ontario Heritage Act, and other City heritage matters.</li> </ul>	LACH (main) and Education subcommittee	TBD	None	Building a Sustainable City 6b	Ongoing
21.	Work Plan review.	<ul style="list-style-type: none"> <li>The LACH will review items on this Work Plan on a quarterly basis, and will thoroughly review this Work Plan at least once annually.</li> </ul>	LACH (main)	Ongoing	None	Building a Sustainable City 6b	Ongoing (March, June, Sept, Dec 2017)
					\$8000		

**LONDON ADVISORY COMMITTEE ON HERITAGE  
2016 WORK PLAN  
(as at September 2016)**

	<b>Project/Initiative</b>	<b>Background</b>	<b>Lead/ Responsible</b>	<b>Proposed Timeline</b>	<b>Proposed Budget (in excess of staff time)</b>	<b>Link to Strategic Plan</b>	<b>Status</b>
1.	<p>-Recurring items as required by the Ontario Heritage Act (consider and advise the PEC (Planning and Environment Committee) on matters related to HAPs (Heritage Alteration Permits), HIS (Heritage Impact Statement) reviews, HCD (Heritage Conservation District) designations, individual heritage designations, (etc.);</p> <p>-Research and advise the PEC regarding recommendations for additions to the heritage register;</p> <p>-Prioritize and advise the PEC on top recommendations for heritage designation (final number to be determined by available time – taken from the heritage registry and elsewhere as appropriate);</p> <p>-Consider and advise the PEC on ad hoc recommendations from citizens in regard to individual and district heritage designations and listings to the heritage register (refer to Stewardship for advice);</p> <p>-Perform all other functions as indicated in the LACH Terms of Reference.</p>	<ul style="list-style-type: none"> <li>Section 28 of the Ontario Heritage Act mandates that the City shall establish a municipal heritage committee. Further, Council shall consult with that committee in accordance with the Ontario Heritage Act;</li> <li>Please see the <a href="#">London Advisory Committee on Heritage: Terms of Reference</a> for further details;</li> <li>The LACH supports the research and evaluation activities of the LACH Stewardship Subcommittee, Policy and Planning Subcommittee, Education Subcommittee, Archaeological Subcommittee, and all other LACH Subcommittees which may serve from time to time.</li> </ul>	LACH (main) and subcommittees	As required	None	Strengthening our Community 4d; Building a Sustainable City 1c, 6b; Growing our Economy 1f, 2d	Ongoing
2.	Introduce all represented organisations and individuals on LACH at the first meeting of the new year, discuss member background and areas of knowledge/ expertise, and consider possible changes or additions.	<ul style="list-style-type: none"> <li>The LACH is made of a diverse and knowledgeable group of engaged individuals, professionals and representatives of various organizations. Once per year (or when a new member joins the committee) each member will introduce themselves to the committee and provide his/her relevant background.</li> </ul>	LACH (main)	January meeting	None	Building a Sustainable City 6b	<b>Completed</b>



	<b>Project/Initiative</b>	<b>Background</b>	<b>Lead/ Responsible</b>	<b>Proposed Timeline</b>	<b>Proposed Budget (in excess of staff time)</b>	<b>Link to Strategic Plan</b>	<b>Status</b>
3.	Ontario Heritage Act enforcement.	<ul style="list-style-type: none"> <li>The LACH will assist in identifying properties that have not obtained necessary approvals, and refer these matters to civic administration. The LACH will assist in monitoring alterations to HCD and heritage designated properties and report deficiencies to civic administration.</li> </ul>	LACH (main)	Ongoing	None	Building a Sustainable City 6b	Ongoing
4.	The St George Grosvenor HCD (Heritage Conservation District) Study and Plan.	<ul style="list-style-type: none"> <li>The St George Grosvenor HCD Study is ongoing. The LACH will continue to monitor, assist and advise in the preparation of the St George-Grosvenor HCD study. The LACH will later monitor, assist and advise in the preparation of the St George-Grosvenor HCD plan, following the timeline as approved by Council.</li> </ul>	LACH (main)	Q2 2016 Study Completion Q2/3/4 2016 Plan Completion	None	Building a Sustainable City 6b	Ongoing
5.	The Soho HCD (Heritage Conservation District) Study.	<ul style="list-style-type: none"> <li>The Soho HCD Study will begin in 2016. The LACH will monitor, assist and advise in the preparation of the Soho HCD study.</li> </ul>	LACH (main)	Q1 2017 Study Completion	None	Building a Sustainable City 6b	Ongoing
6.	Property insurance updates.	<ul style="list-style-type: none"> <li>The LACH will monitor, assist and advise on matters pertaining to the securing of property insurance for heritage designated properties in the City of London.</li> </ul>	Policy and Planning Sub-Committee	Ongoing.	None	Building a Sustainable City 6b	With Policy and Planning Sub-Committee
7.	City Map updates.	<ul style="list-style-type: none"> <li>The LACH is generally aware of changes to heritage properties and districts in the City of London. As such, the LACH will work with City staff to ensure that 'City Map' and searchable City databases are up to date in regard to the heritage register/ designations/ districts/ etc.</li> </ul>	Policy and Planning Sub-Committee	Ongoing	None	Building a Sustainable City 6b	With Policy and Planning Sub-Committee
8.	HIS (Heritage Impact Statement) reporting changes.	<ul style="list-style-type: none"> <li>Consider and revise our approach to reviewing and advising on HIS reports (including what triggers the reports, expectations, and who completes them – i.e. city or proponent (etc.)) following a review by the LACH Policy and Planning Subcommittee.</li> </ul>	Policy and Planning subcommittee	TBD	None	Building a Sustainable City 6b	Partial Complete

	Project/Initiative	Background	Lead/ Responsible	Proposed Timeline	Proposed Budget (in excess of staff time)	Link to Strategic Plan	Status
9.	New and ongoing heritage matters.	<ul style="list-style-type: none"> <li>Through its connections to various heritage groups, and the community at large, the LACH is generally aware of emerging and ongoing heritage matters in the City of London. The LACH will monitor and report to City staff and PEC on new and ongoing cultural heritage matters where appropriate. (Examples include the emerging Ontario Cultural Strategy, the Community Economic Roadmap, the London Plan, etc.).</li> </ul>	LACH (main)	As required	None	Building a Sustainable City 6b	As required
10.	Archaeological Master Plan completion.	<ul style="list-style-type: none"> <li>The LACH is generally aware of ongoing archaeological matters in the City of London through the Archaeological subcommittee, and connections to the archaeological community in London. The LACH will work with City staff to complete the Archaeological Master Plan currently underway.</li> </ul>	Archaeological subcommittee	Q1 2017	None	Building a Sustainable City 6b	The Archaeological Master Plan has been initiated
11.	The Mayor's New Year Honour List recommendation.	<ul style="list-style-type: none"> <li>For a number of years, members of the LACH have been asked to provide advice to Council on the heritage addition to the "Mayor's New Year Honour List". The LACH will continue to serve this function as requested to do so by Council.</li> </ul>	Ad hoc committee of the LACH	Generally in the fall of each year	None	Building a Sustainable City 6b	
12.	Provide advice to the London Community Foundation on heritage grant distribution.	<ul style="list-style-type: none"> <li>For a number of years, members of the LACH have been asked to provide advice to the London Community Foundation on heritage grant distribution: "The London Endowment Fund for Heritage". The LACH will continue to serve this function as requested to do so by the Foundation.</li> </ul>	Ad hoc committee of the LACH	Generally in April of each year	None	Building a Sustainable City 6b	<b>Completed</b>
13.	Conference attendance.	<ul style="list-style-type: none"> <li>For a number of years, members of the LACH have attended the Ontario Heritage Conference when available. This conference provides an opportunity for LACH members to meet with other heritage committee members and heritage planning professionals, and to learn about current and ongoing heritage matters in the Province of</li> </ul>	LACH (main)	May 12-14 2016	Up to \$1000 (if 4 members attend)	Building a Sustainable City 6b	

	<b>Project/Initiative</b>	<b>Background</b>	<b>Lead/ Responsible</b>	<b>Proposed Timeline</b>	<b>Proposed Budget (in excess of staff time)</b>	<b>Link to Strategic Plan</b>	<b>Status</b>
		Ontario (and beyond). Up to 4 members of the LACH will attend the Ontario Heritage Conference in Stratford, Ontario.					
14.	Public awareness and education (& possible heritage fair/ day/ symposium).	<ul style="list-style-type: none"> <li>The LACH initiates, assists and/or advises on education and outreach programs to inform the citizens of London on heritage matters. This year, the LACH will also consider contributing to the organization of a city wide heritage fair/ day/ symposium (to provide information and outreach including – HAP process, professional advice on repairs and maintenance, current research on heritage matters, insurance advice, real estate matters, and a general exchange of ideas (etc.)). The LACH will coordinate with the efforts of the Historic Sites Committee of the London Public Library.</li> </ul>	Education subcommittee	Ongoing	TBD	Building a Sustainable City 6b	Ongoing – in progress
15.	Public awareness and education collaboration with the London Heritage Council.	<ul style="list-style-type: none"> <li>The LACH will be supported by the London Heritage Council in its role to promote public awareness of and education on the community’s cultural heritage resources. Collaborative initiatives may include LACH-related news updates in the LHC newsletter, LACH involvement in LHC programming and events (i.e. Heritage Fair), outreach support, and/or school-related programming as part of Citizen Culture: Culture-Infused LEARNING (LHC and London Arts Council).</li> </ul>	LACH (main) and Education subcommittee in collaboration with the London Heritage Council	Ongoing	TBD	Building a Sustainable City 6b	In Progress
16.	LACH member education/ development.	<ul style="list-style-type: none"> <li>Where possible, the LACH will arrange an information session for LACH members to learn more about the Ontario Heritage Act, and the mandate and function of Heritage Advisory Committees. The LACH will also explore ongoing educational opportunities for LACH members (such as walking tours, meetings with heritage experts/ professionals, meetings with community leaders, etc.).</li> </ul>	LACH (main)	Ongoing	TBD	Building a Sustainable City 6b	Ongoing

	<b>Project/Initiative</b>	<b>Background</b>	<b>Lead/ Responsible</b>	<b>Proposed Timeline</b>	<b>Proposed Budget (in excess of staff time)</b>	<b>Link to Strategic Plan</b>	<b>Status</b>
17.	City of London Archives.	<ul style="list-style-type: none"> <li>The LACH will continue to discuss and advise on possible locations (and contents) for a City of London Archives.</li> </ul>	LACH (main)	Ongoing	None	Building a Sustainable City 6b	Ongoing
18.	LACH subcommittee member outreach.	<ul style="list-style-type: none"> <li>The LACH will continue to reach out to heritage and planning professionals/ experts to serve on LACH subcommittees (and advise the LACH on certain matters).</li> </ul>	LACH (main)	Ongoing	None	Building a Sustainable City 6b	Ongoing
19.	Heritage signage and plaque placement/funding.	<ul style="list-style-type: none"> <li>Through its connections to various heritage groups, and the community at large, the LACH is generally aware of potential locations for heritage signage and plaques. The LACH will consult with City Staff and heritage groups in regard to the occasional placement of heritage signage and/or plaques (and assist with funding where deemed appropriate by the committee). These efforts will be considered in the context of the City of London Heritage Interpretative Signage Policy.</li> </ul>	Education subcommittee	Ongoing	TBD	Building a Sustainable City 6b	Ongoing
20.	Council outreach.	<ul style="list-style-type: none"> <li>If requested, the LACH will arrange an information session for Council members to learn more about the mandate and function of the LACH, the Ontario Heritage Act, and other City heritage matters.</li> </ul>	LACH (main) and Education subcommittee	TBD	TBD	Building a Sustainable City 6b	
21.	Work Plan review.	<ul style="list-style-type: none"> <li>The LACH will review items on this Work Plan on an ongoing basis, and will thoroughly review this Work Plan at least once annually.</li> </ul>	LACH (main)	Ongoing	None	Building a Sustainable City 6b	Every two months

## Heritage Planners' Report to LACH: April 12, 2017

1. Heritage Alteration Permits processed under Delegated Authority By-law:
  - a. 39 Ridout Street South (Wortley Village-Old South HCD): porch
  - b. 37 Empress Avenue (Blackfriars/Petersville HCD): rear addition
  - c. 36 Blackfriars Street (Blackfriars/Petersville HCD): rear addition
  - d. 130 Wharncliffe Road South (Wortley Village-Old South HCD): louvre alteration for ventilation
  - e. 122 Wharncliffe Road South (Wortley Village-Old South HCD): signage
  - f. 173 Mount Pleasant Avenue (Part IV designation): window replacement
  - g. 355 Talbot Street (Downtown HCD): signage
  - h. 266 Dundas Street (Downtown HCD): window replacement
  - i. 188-190 Dundas Street (Downtown HCD): revision
  - j. 145 Wilson Avenue (Blackfriars/Petersville HCD): rear addition, remove garage, windows (retain stained glass)
  - k. 244 Dundas Street (Downtown HCD): façade
2. Ad-Hoc Allocation Committee to review London Endowment Fund for Heritage application (Thursday April 20, 2017 at 12:00pm at the London Community Foundation office, mezzanine, Covent Garden Market. Lunch provided)
3. Advisory Committee Open House Reception hosted by Mayor Matt Brown and Municipal Council on Thursday May 4, 2017, 7:00-9:00pm at City Hall. RSVP to Anastasia Bush ([abush@london.ca](mailto:abush@london.ca)) by Friday April 21, 2017.
4. Update: Property Standards Appeal: 1266 Riverside Drive (The Cedars)
5. Staff Report: Vacant Unit Rebate and Vacant/Excess Land Subclass Tax Reduction
6. OZ-8053: Notice of Application: Secondary Dwelling Units policies
7. Z-8701: Notice of Public Meeting: Add regulations to R1, R2, and R3 zones within the Primary Transit Area related to the compatibility of new development with existing low-density residential neighbourhoods

### Upcoming Heritage Events

- Earth Day 150 Weekend on April 21-23, 2017. More info: [www.londoncelebrates.ca/earthdayweekend](http://www.londoncelebrates.ca/earthdayweekend)
- Insurance for Heritage Properties featuring Pete Karageorgos, Insurance Bureau of Canada, hosted by the Petrolia Heritage Committee at the Victoria Playhouse,

411 Greenfield Street, Petrolia, Ontario on Tuesday April 25, 2017 at 7:00pm.  
RSVP by April 13, 2017 to Susan McEwan ([susanmcewan4@gmail.com](mailto:susanmcewan4@gmail.com))

- Victoria Bridge Environmental Assessment Public Information Centre #1 on Wednesday April 26, 2017 at St. James Westminster Anglican Church (115 Askin Street), 5:00-7:00pm
- Thames Valley Regional Heritage Fair on Thursday April 27, 2017, 10:00am-2:00pm, at Fanshawe Pioneer Village (1424 Clarke Road)
- Jane's Walks on May 5-7, 2017. More information:  
[www.janeswalk.org/canada/london/](http://www.janeswalk.org/canada/london/)
- Canada 150 TD Environmental Design Competition Final Presentations at Fanshawe College (Room D1060) on Saturday May 6, 2017 8:30am-4:00pm
- Seasonal Hanging Basket Workshop at Eldon House (Sunday, April 23<sup>rd</sup>, 1:00-3:00pm)
- Mother's Day Tea at Eldon House (Sunday, May14, 12:30 and 3:00pm seating)
- Terrific Tales of London & Area at the Central Library (Stevenson & Hunt B) on Tuesdays at 7:00pm:
  - May 16: Dan Brock: Virtual Walk down Dundas Street, 1867
  - May 23: Arthur McClelland: Queen Victoria's Diamond Jubilee, 1897
  - May 30: Hilary Neary: Rev. Lewis Chambers' London Ministry to Blacks
  - June 6: John C. Nash & Deb Majer: Nash Jewellers at 100
  - June 13: Michael Robertson: London Community Concert Association
- "Elizabeth II: the Sapphire Jubilee and Canada 150" on May 15, 2017 at 7:00pm at the Central Library (Stevenson & Hunt B)