



## **Community Open House Medway Valley Heritage Forest ESA (south) Conservation Master Plan**

**WHAT: Community Open House** for the Conservation Master Plan (CMP) Phase 2 for the Medway Valley Heritage Forest, Environmentally Significant Area (MVHF ESA) for the ESA lands south of Fanshawe Park Road West. CMPs are guideline documents, providing direction in the management of ESAs.

Phase 1 of the CMP was approved by Council in 2017 and the reports and findings are available on the City website.

**WHY:** You should attend the open house to have your say into the long term management and trail planning for the Medway VHF ESA (south).

**WHEN: Thursday June 1, 2017 - drop in from 5:30 – 7:30pm**

**WHERE: Museum of Ontario Archaeology, 1600 Attawandaron Rd, N6G 3M6**

**HOW:** The Guidelines for Management Zones and Trails in ESAs document and process will be followed:

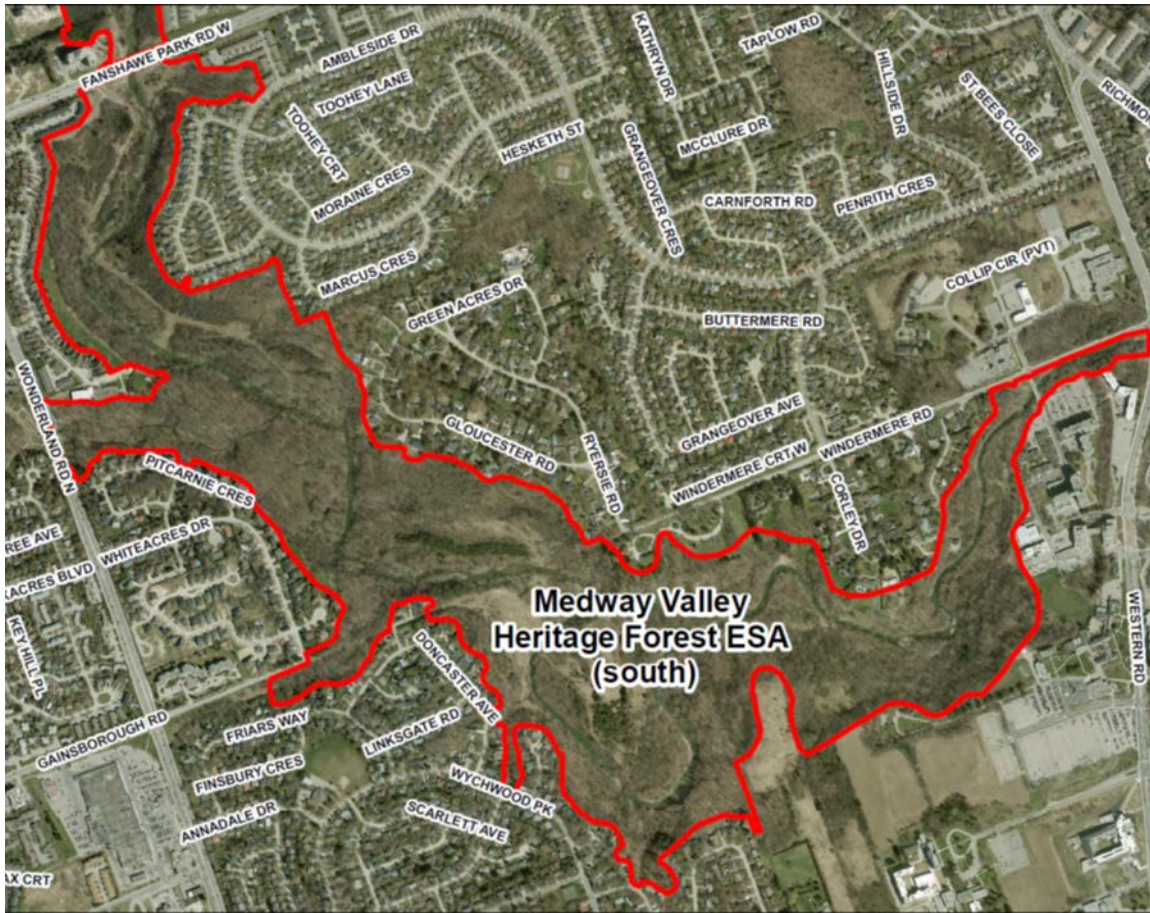
**PHASE 1:** Community Engagement and Participation ✓  
Life Science Inventory and Evaluation ✓  
Boundary Delineation ✓  
Application of Management Zones & Review of Existing Trails ✓  
Identifying Management Issues

**PHASE 2:** Community Engagement and Participation  
Goals, Objectives, Recommendations  
Ecological Protection, Enhancement & Restoration  
Trail Planning & Design Process  
Priorities for Implementation  
Final Conservation Master Plan

**NEXT STEPS:** The Community Open House presentation boards and a link to an ESA management and trail planning [survey](#) will be posted on the City's website on the **ESA Conservation Master Plan Review** webpage at: [www.london.ca/residents/Environment/Natural-environments/Pages/Conservation-Plans.aspx](http://www.london.ca/residents/Environment/Natural-environments/Pages/Conservation-Plans.aspx)

- The survey will be available from June 1, 2017 until July 1, 2017
- A second Community Open House is planned for October 2017

**Medway Valley Heritage Forest ESA (south)**



**For more information please contact:**

Linda McDougall, Ecologist  
Environmental and Parks Planning, Planning Services  
[lmcdouga@london.ca](mailto:lmcdouga@london.ca) 519-661-CITY (2489) x 6494

Please contact 519-661-CITY (2489) Ext. 2425 or [accessibility@london.ca](mailto:accessibility@london.ca) if you need information in an alternate format, or require the assistance of a communication support. Arrangements are made upon request by submitting a customer accommodation request form.