



Child & Youth Network



Participants average of **27** on their grocery bill

In 2007...

- 1 in 5 children were living in poverty
- 1 in 4 children were not ready to learn in grade 1
- 1 in 5 youth did not graduate high school
- 1 in 4 children were obese or overweight



In 2015...
of London registered 1,450



Since 2007...

\$1,125,000 for the *Healthy Kids Community Challenge*



Baby's Book Bag helped 75% of recipients read more to their baby.

90% of families in Family Centre neighbourhoods said services were easy to access, compared to 59% in non-Family Centre neighbourhoods.



After neighbourhood-level investments focused on increasing healthy behaviours, a follow-up survey found a **21%** decrease in the number of 10th Standard respondents who spent at least an hour watching television.

\$2,500,000 to build 3 new Family Centres

Food Families participants saved an average of **\$127** per month on their monthly grocery bill

In 2007...

- 1 in 5 children were living in poverty
- 1 in 4 children were not ready to learn in grade 1
- 1 in 5 youth did not graduate high school
- 1 in 4 children were obese or overweight

In 2015, **99%** of London schools and 1,495 students registered for the Grade 5 Act-4-Pass.



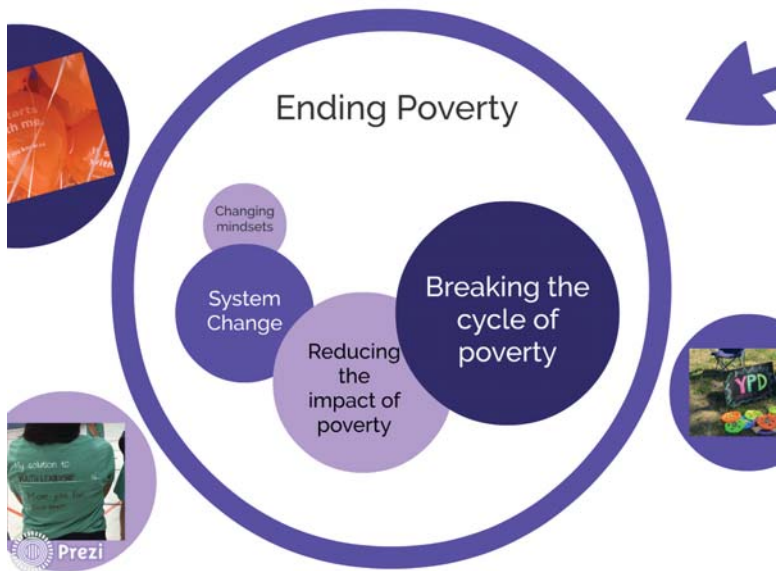
London & Middlesex



The case for (more) action...

Our ability to positively improve outcomes for individuals and families has greatly improved, and we now need to *focus on how to scale up these positive impacts* across the whole population.







Making Literacy A Way of Life

Improve youth literacy

Promote literacy from birth

Engage parents and caregivers in awareness and promotion of literacy

Improve literacy in the school age years

Support community partners with professional learning and practices



Healthy Eating & Healthy Physical Activity

Create healthy, active neighbourhoods

Develop tools and resources

Improve the built environment

Policy development and advocacy

Enhance existing programs

Promote and support local research

Research and reflection

Education and awareness



Family-Centred Service System

Develop a network of Family Centres to provide identifiable, accessible, family-friendly access points to the service system

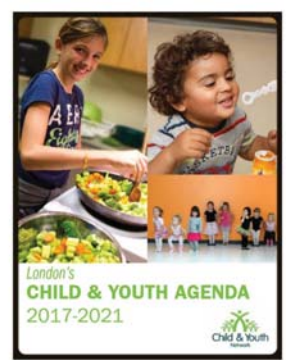
Move beyond collaboration, coordination, and co-location to an integrated, family-centred model of service delivery



Shared Measurement

Outcome	Primary Priority Connection(s)	Existing contribution indicators
Influence		
School preparedness	• Literacy	• EQR scores
Educational success	• Literacy • Ending Poverty	• EQAO scores • Graduation rates
Physical activity behaviour	• HEHRA	• HEHRA Act & Pass survey results
Healthy eating	• HEHRA • Ending Poverty	• Fruit and vegetable consumption rates
Community inclusion & engagement	• All priorities	• Rates of children and youth reporting sense of belonging to community
Availability of resources in neighbourhoods	• Family-Centred Service System • Ending Poverty	• Community asset mapping • Family Centre usage statistics
System change	• Family-Centred Service System • Ending Poverty	• Level of partner integration
Track		
Childhood poverty	• Ending Poverty	• Low Income Measure
Childhood obesity	• HEHRA	• Self-reported BMI
Mental wellbeing	• All priorities	• Rates of children and youth reporting positive mental wellbeing

HOW can we inform help us de impact



London's Child & Youth Network

