



### Invitation for Representatives to Participate in a Local Advisory Committee (LAC)

**WHAT:** This is an invitation for a representative of your group or organization (listed below) to participate in the Local Advisory Committee as part of Phase 2 of the Conservation Master Plan (CMP) for the Medway Valley Heritage Forest, Environmentally Significant Area (MVHF ESA) process for the ESA lands south of Fanshawe Park Road West.

Phase 2 of the CMP process will include many other opportunities for community engagement, participation and feedback in addition to the LAC meetings. Two Medway VHF ESA CMP Community Open House meetings will be held in 2017 and the notices and a survey will be circulated with more details once they are available. Phase 1 of the CMP was approved by Council in 2017 and the [reports](#) and [findings](#) are available on the City's website. The [Guidelines for Management Zones and Trails in ESAs](#) document and process will be followed:



### WHO: Local Advisory Committee (LAC) for MVHF ESA (south) shall be comprised of:

- 1 representative from Accessibility Advisory Committee (AACAC)
- 1 representative from Environmental and Ecological Planning Advisory Committee (EEPAC)
- 1 representative from Upper Thames River Conservation Authority (UTRCA)
- 1 representative from each of the 3 local MVHF ESA Adopt an ESA groups
- 1 representative from each of the local Ratepayer Associations / Community Associations
- 1 representative from Western
- 1 representative from Huron University College
- 1 representative from Nature London (NL)
- 1 representative from Thames Valley Trail Association (TVTA)
- 1 representative from Heritage London Foundation
- City staff and consultants to facilitate process

## WHY: The Role of Local Advisory Committee (LAC)

1. Review ESA management issues;
2. May attend ESA site visits to help to resolve planning issues;
3. Help to develop the restoration plan, trail plan and recommendations;
4. Prioritize implementation of recommendations, and;
5. Review the draft Phase II CMP reports

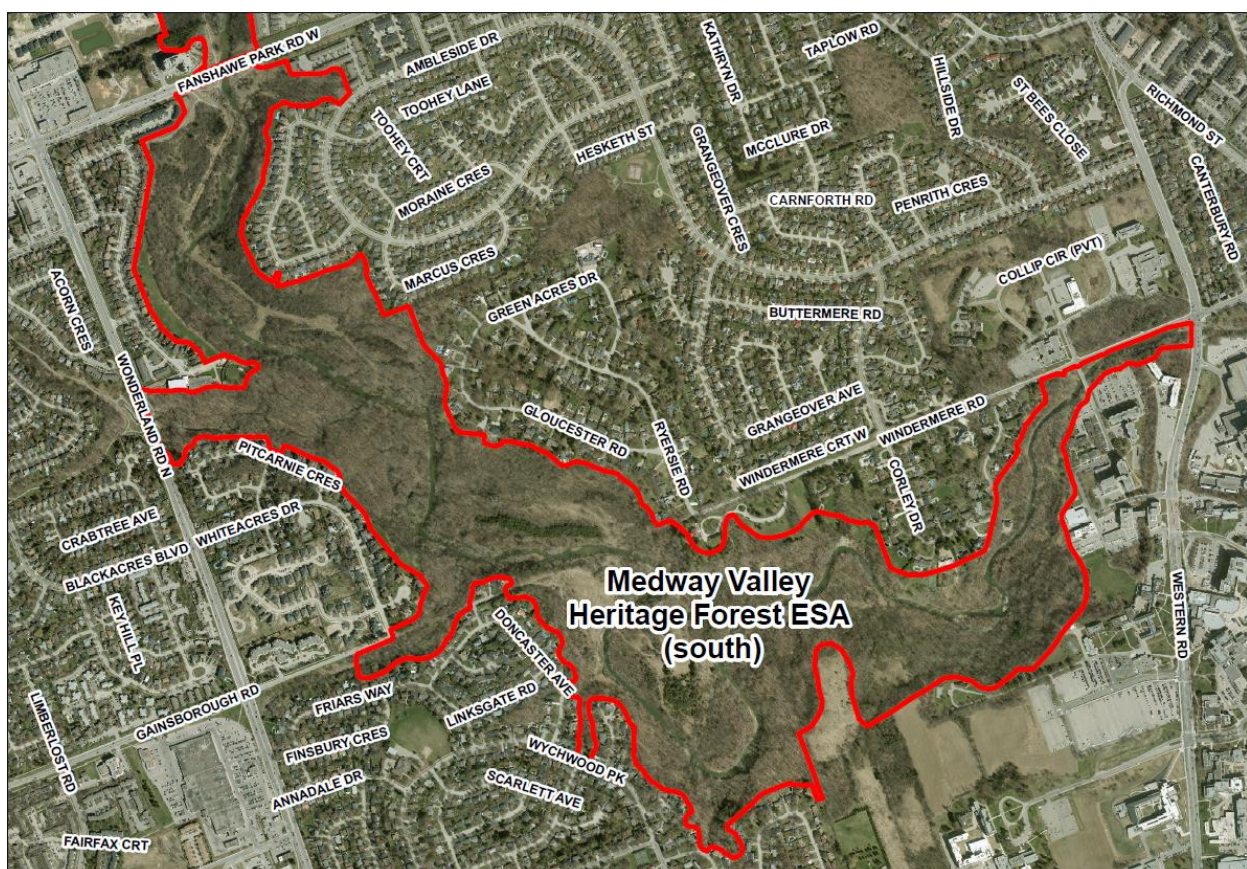
## WHEN: LAC Meeting Dates and Times\*

- LAC Meeting 1 Thursday April 27, 2017, 5:30pm - 7:00pm
- LAC Meeting 2 Thursday May 4, 2017, 5:30pm - 7:00pm
- LAC Meeting 3 Thursday July 27, 2017, 5:30pm - 7:00pm
- LAC Meeting 4 Thursday Sept. 7, 2017, 5:30pm - 7:00pm
- LAC Meeting 5 Thursday Oct. 5, 2017, 5:30pm - 7:00pm

\*additional meetings/site visits in the MVHF ESA may be added

**WHERE:** LAC meetings will be held in Committee Room #3, City Hall, 300 Dufferin Avenue and a light supper will be provided

**ACTION REQUIRED:** Please select a LAC representative for your group or organization and advise Linda McDougall, Ecologist [lmcdouga@london.ca](mailto:lmcdouga@london.ca) 519-661-2500 x 6494 of your choice by email by April 21, 2017.



Medway Valley Heritage Forest ESA (south)

0 75 150 300 450 600 Meters



Please contact 519-661-2500 Ext. 2425 or [accessibility@london.ca](mailto:accessibility@london.ca) if you need information in an alternate format, or require the assistance of a communication support. Arrangements are made upon request by submitting a customer accommodation request form.