

Highway 401 Pond Mills Road & CNR Overhead Bridge Replacements Elliot-Laidlaw & Murray Drain Culvert Replacements

Preliminary/Design-Build Ready and Class Environmental Assessment Study

City of London
Civic Works Committee
February 21, 2017

Valerie Nantais, P. Eng., Ministry of Transportation
Tanya Cross, P. Eng., Dillon Consulting Limited



Background

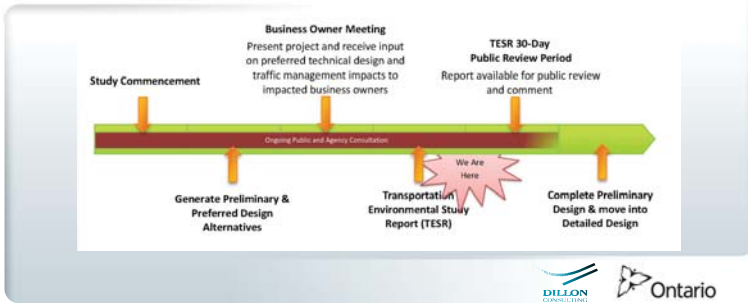
- 2004 ➔ Highway 401 – Colonel Talbot Road - Highbury Ave
 - CNR/Pond Mills Road Overpass Replacement
 - Vertical Curve Improvements
 - Elliot-Laidlaw/Tributary to Murray Drain Culvert Extensions
- 2012 ➔ Highway 401/Highbury Avenue Interchange Improvements
 - Elliot-Laidlaw Drain Culvert Replacement
- 2012 ➔ Highway 401:
 - Pond Mills, CNR Bridge Replacements (2004 Study)
 - Elliott Laidlaw and Murray Drain Culverts
 - Vertical Curve Improvements (2004 Study)
 - Construction Staging /Traffic Management Plan



MTO Class Environmental Assessment Process

Mega EA Assignment 1B

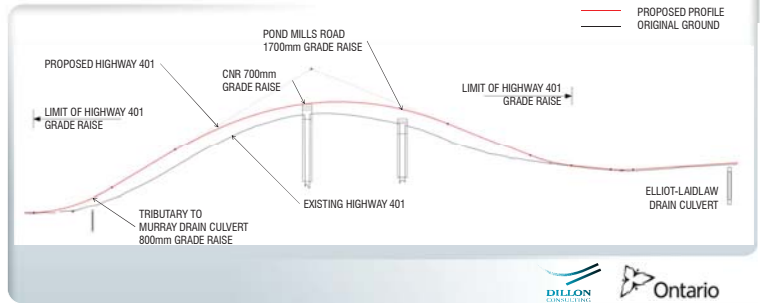
3



Recommended Profile

Mega EA Assignment 1B

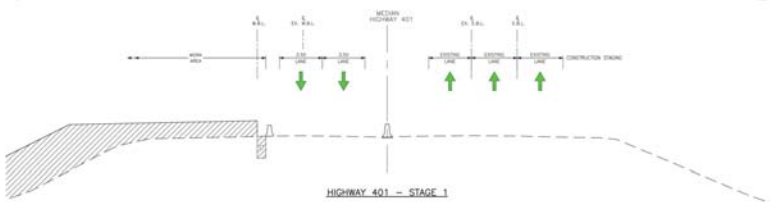
4



Recommended Construction Staging/Traffic Management Plan

Mega EA Assignment 1B

5



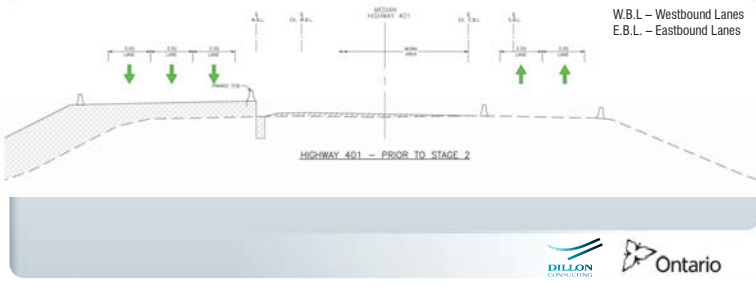
Recommended Construction Staging/Traffic Management Plan

Mega EA Assignment 1B

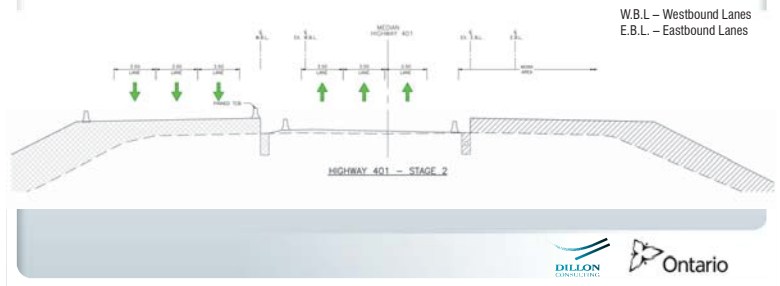
6



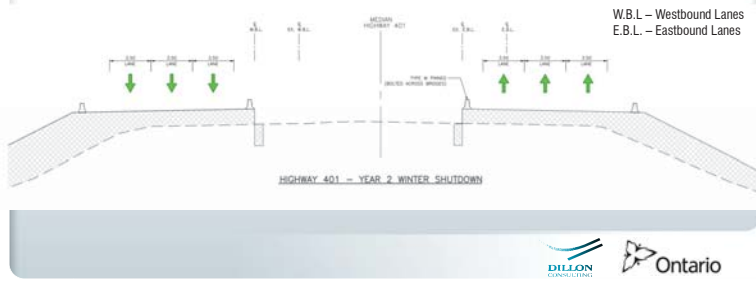
Recommended Construction Staging/Traffic Management Plan



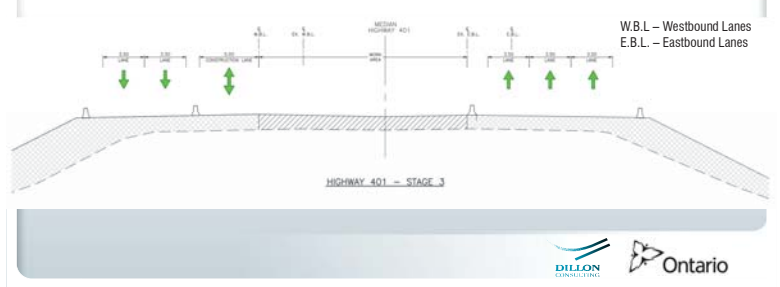
Recommended Construction Staging/Traffic Management Plan



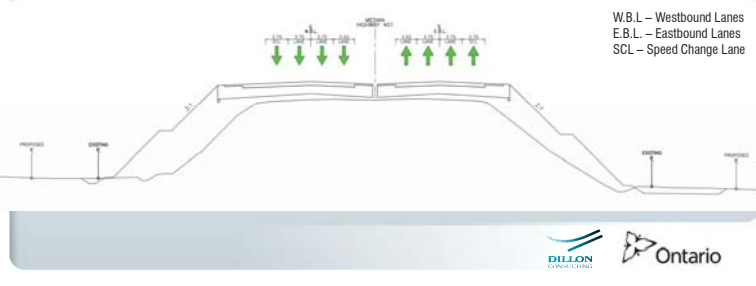
Recommended Construction Staging/Traffic Management Plan



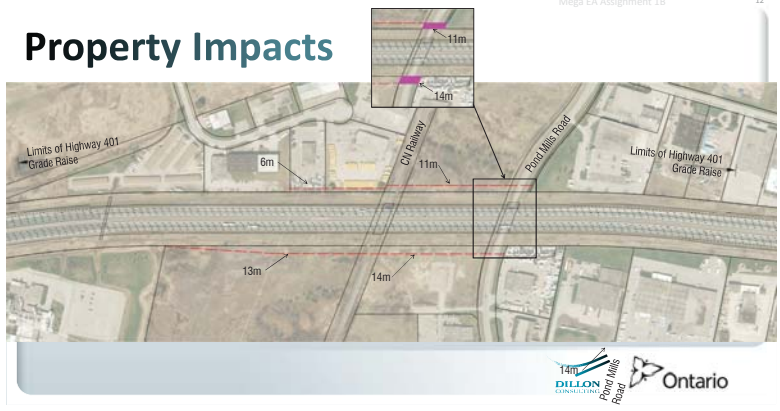
Recommended Construction Staging/Traffic Management Plan



Background Highway 401 Cross Section



Property Impacts



Recommended Construction Staging/Traffic Management Plan



Highbury Avenue Interchange

Recommended Construction Staging/Traffic Management Plan



Exeter Road

Recommended Construction Staging/Traffic Management Plan



Wellington Road Interchange

Pond Mills Road

- Closure – Up to 18 Months



Highway 401 Wellington Rd. to Highbury Ave.

— Existing Property Line
 — Property Acquisition



Benefits to the City of London

- Provincial Investment
- Highway 401 Visibility
- Improved Connectivity
- Future Pond Mills Road



Next Steps

Spring 2017:

- Publish Transportation Environmental Study Report
- Combine Project with Highway 401/Highbury Avenue Interchange Improvements
 - » Reduce Road User Impacts
 - » Reduce Impacts – Highbury Avenue Interchange

Fall 2017:

- Combined Preliminary/Design-Build Ready Report

Winter 2017/2018 – Advertise Design-Build Contract

Summer 2018 – Anticipated Design-Build Contract Initiation

Spring 2019 – Construction Start

Questions?