

TO:	CHAIR AND MEMBERS CIVIC WORKS COMMITTEE MEETING ON JANUARY 10, 2017
FROM:	KELLY SCHERR, P. ENG, MBA, FEC MANAGING DIRECTOR, ENVIRONMENTAL & ENGINEERING SERVICES AND CITY ENGINEER
SUBJECT:	SOUTHDALE ROAD WEST ENVIRONMENTAL ASSESSMENT PINE VALLEY BOULEVARD TO COLONEL TALBOT ROAD INCLUDING BOSTWICK ROAD NORTH OF PACK ROAD APPOINTMENT OF CONSULTING ENGINEER

RECOMMENDATION

That on the recommendation of the Managing Director, Environmental & Engineering Services and City Engineer, the following actions **BE TAKEN** with respect to the appointment of a consultant for the environmental assessment for Southdale Road West extending from Pine Valley Boulevard to Colonel Talbot Road including Bostwick Road from Southdale Road West to Pack Road.

- (a) AECOM Canada Ltd., **BE APPOINTED** Consulting Engineers to complete the environmental assessment in the amount of \$309,005.40 (excluding HST), in accordance with Section 15.2 (e) of the Procurement of Goods and Services Policy;
- (b) the financing for this project **BE APPROVED** as set out in the Sources of Financing Report attached hereto as Appendix A;
- (c) the Civic Administration **BE AUTHORIZED** to undertake all the administrative acts that are necessary in connection with this project;
- (d) the approvals given herein **BE CONDITIONAL** upon the Corporation entering into a formal contract with the consultant for the work; and,
- (e) the Mayor and City Clerk **BE AUTHORIZED** to execute any contract or other documents, if required, to give effect to these recommendations.

PREVIOUS REPORTS PERTINENT TO THIS MATTER
--

- Civic Works Committee – March 8, 2016 – Bostwick Road Environmental Assessment, Wharnccliffe Road West to Pack Road, Appointment of Consulting Engineer
- Strategic Priorities & Policy Committee – June 9, 2016 - Growth Management Implementation Strategy (GMIS): 2017 Annual Review & Update - Appendix 'F': Detailed Commentary Regarding Developer Infrastructure Requests
- Planning and Environmental Committee, October, 2012: The Southwest Area Secondary Plan Report

- Civic Works Committee – June 19, 2012 – London 2030 Transportation Master Plan

2015-19 STRATEGIC PLAN

The following report supports the Strategic Plan through the strategic focus area of *Building a Sustainable City*. The proposed Southdale Road West improvements project will support planned growth in the area and provide increased capacity and safety for all users.

BACKGROUND

Purpose

This report seeks the approval of the Municipal Council to retain an engineering consultant to undertake the environmental assessment (EA) for the Southdale Road West corridor. The purpose of this EA is to satisfy the requirements of the Environmental Assessment Act by providing a comprehensive, environmentally sound planning process with public participation and to facilitate dialogue between parties with a number of different interests.

Context

The study area for this EA is the Southdale Road West corridor extending from Pine Valley Boulevard to Colonel Talbot Road, including Bostwick Road from Southdale Road West to Pack Road. The surrounding land use is a mix of residential, agricultural, recreational and open space. Southdale Road West and Bostwick Road accommodate approximately 18,000 and 6,000 vehicles per day, respectively. The EA will identify and balance the needs of the full range of potential users within the community including users of all ages and abilities, pedestrians, cyclists, transit vehicles and motorists.

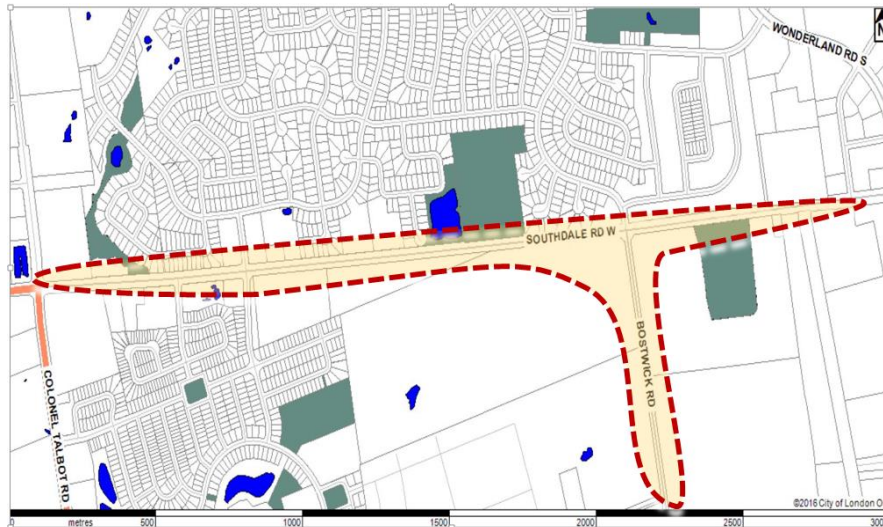
Due to the rising traffic volumes and developments in the area, the City has identified a need for improvements along the Southdale Road West and Bostwick Road. The EA is required to proceed with the implementation strategy.

DISCUSSION

Project Description

The study area is Southdale Road West corridor extending from Pine Valley Boulevard to Colonel Talbot Road, including Bostwick Road from Southdale Road West to Pack Road. This EA will assess the remaining section of Bostwick Road between Southdale Road West and Pack Road with limits that abut the current Bostwick Road EA that commenced March 2016.

A map of the study area is displayed in the following illustration:



Environmental Assessment Study Limits

The Southdale Road West widening project was identified as a priority in the 2030 Smart Moves Transportation Master Plan (TMP). Southdale Road West and the subject section of Bostwick Road north of Pack Road are identified in the Development Charges Background Study with the construction target dates as follows.

Road	Limits	Improvements	Implementation
Boswick Road	Southdale Road West to Pack Road	2-lane Upgrades	2021
Southdale Road West	Pine Valley Drive to Farnham/Bostwick Road	4-lane Widening	2022
Southdale Road West	Farnham/Bostwick Road to Colonel Talbot	4-lane Widening	2026

The intent of this EA is to explore various geometric designs and develop a functional plan for the preferred design. Corridor improvements will also need to be identified to support future growth in the Southwest Area Plan (SWAP). The EA will review the phasing and timing of the improvements.

The study will provide justification for the preferred design improvements to the existing road cross section. The preferred design will need to reflect both the existing and planned land use, urban form and transportation contexts. The corridor will need to serve the surrounding community in their day to day activities and in a variety of modes.

The proposed EA assignment will:

- Review and document the key findings of the SWAP and transportation impact studies relevant to the study corridor and development areas;
- Develop and evaluate design alternatives considering natural, social, cultural and economic environment considerations;

- Recommend the future improvements for the corridor and intersections to mitigate future deficiencies, accommodate increased traffic demand, and improve safety;
- Develop a functional and visually attractive design concept;
- Engage the public and stakeholders to allow public input and active involvement throughout the study process;
- Determine the appropriate right-of-way and property requirements;
- Coordinate with planned development;
- Coordinate underground service needs;
- Assess and document the ecological and natural features within the corridor and identify management needs; and,
- Document in a clear and transparent manner the process undertaken and provide formal documentation and presentations.

Issues of special interest in the project area include:

- A high pressure gas main situated along the south side of Southdale Road West;
- A Hydro One Networks Inc. transmission line/substation;
- Cultural heritage assessment;
- Provincially significant wetlands; and,
- The proposed Southwest Community Centre.

Growth Management Implementation Strategy Consultation

The Growth Management Implementation Strategy (GMIS) is an important tool for Council to coordinate growth infrastructure with development approvals and to guide the pace of growth across the city in a financially practical manner. The GMIS is reviewed and updated annually and considers the pace of development, the status of development charge reserve funds, and the desires of developers to progress development applications in areas approved for growth. It provides flexibility to respond to changes in market conditions or to make adjustments that reflect the financial status of the DC reserve funds.

The results of the 2016 GMIS Consultation process were reported to the Strategic Priorities & Policy Committee on June 9, 2016. A request to accelerate the implementation of the first phase of the Southdale Road project from 2022 to 2020/2021 was received citing capacity concerns with pending traffic volumes and intersection controls. Transportation staff reviewed the request and supported the acceleration of the EA to commence in 2017. The future construction timing will be reviewed in conjunction with the EA and upcoming Development Charges Background Study process.

The Southwest Community Centre

The EA study area includes the proposed Southwest Community Centre that is scheduled to open in September 2018. The Southwest Community Centre incorporates the YMCA, Library, indoor pool, double pad arena, gymnasium a community centre space and began construction in July 2016. This centre is intended to serve as a recreation centre and community hub for the immediate neighbourhood(s) of Westmount, Talbot and Bostwick and as a destination recreation centre for the larger southwest area of the city, including Byron, Riverbend, Lambeth, Longwoods, Southcrest and Highland. The EA will consider road improvements

specifically to improve multi-modal connectivity to the Southwest Community Centre for users of all ages.

Consultant Selection

The consultant selection process has been undertaken in accordance with the Procurement of Goods and Services Policy. After an open posting, Stantec Consulting Ltd., AECOM Canada Ltd., Dillon Consulting, IBI Group, BTE Engineering and CIMA Canada Inc. were asked to submit detailed proposals and work plans. All firms responded with written proposals including a summary of the project tasks, schedule, and costs. An evaluation committee reviewed the submissions for the project.

Based on the evaluation criteria and selection process identified in the request for proposal, the evaluation committee determined the proposal from AECOM Canada Ltd. provides the best overall value to the City.

AECOM Canada Ltd. has an experienced project team that exhibited a clear understanding of the project scope and requirements. Their experience on similar projects of this nature, combined with a project proposal that confirmed a thorough understanding of the goals and objectives, illustrated their expertise for this undertaking. The consultant project team is familiar with the challenges presented in this project having been involved in several past projects in the area.

In accordance with Section 15.2 (e) of the Procurement of Goods and Services Policy, the civic administration is recommending AECOM Canada Ltd. be appointed as the consulting engineer for the EA. The submission from AECOM Canada Ltd. includes a fee submission that indicates that the EA can be completed within the funds available.

CONCLUSION

This study will set the needs and balance the requirements of the full range of potential users within a community including users of all ages and abilities, pedestrians, cyclists, transit vehicles and motorists. The need for this environmental assessment has been identified as a result of the rising traffic volumes and developments in the area.

Based on the technical evaluation of the proposals, it is recommended AECOM Canada Ltd. be awarded the consulting assignment for the Environmental Assessment Study for Southdale Road West extending from Pine Valley Boulevard to Colonel Talbot Road, including Bostwick Road from Southdale Road West to Pack Road. The consultant assignment is valued at an upset amount of \$309,005.40 excluding HST.

Acknowledgements

This report was prepared with the assistance of Ted Koza, P.Eng., Transportation Design Engineer and Max Kireev, C.E.T., Technologist II of the Transportation Planning & Design Division.

PREPARED BY:	REVIEWED & CONCURRED BY:
DOUG MACRAE, P. ENG. DIVISION MANAGER TRANSPORTATION PLANNING & DESIGN	EDWARD SOLDI, P.ENG. DIRECTOR, ROADS AND TRANSPORTATION
RECOMMENDED BY:	
KELLY SCHERR, P.ENG., MBA, FEC MANAGING DIRECTOR, ENVIRONMENTAL & ENGINEERING SERVICES AND CITY ENGINEER	

Attachment: Appendix A: Sources of Financing

c: AECOM Canada Ltd.