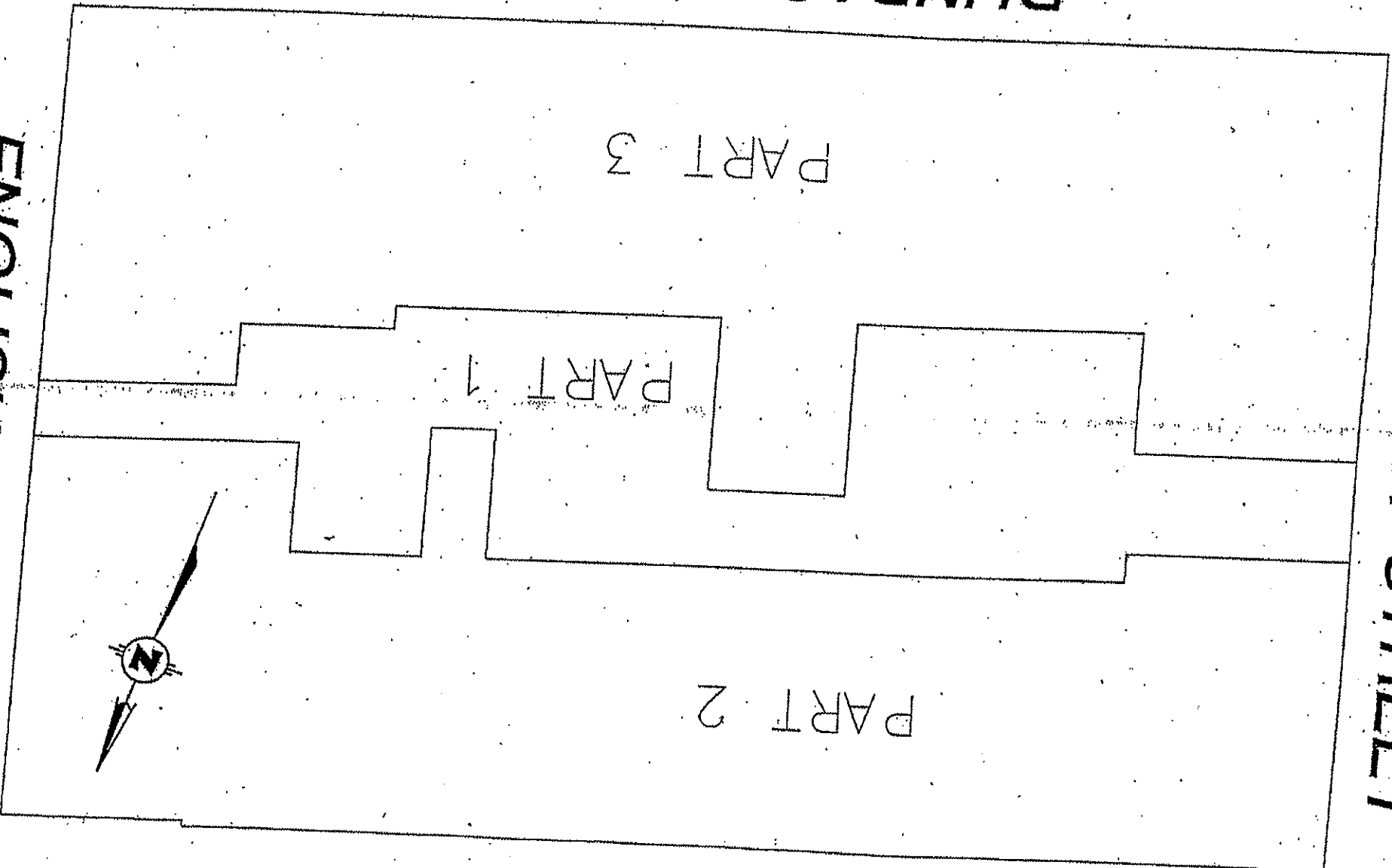


ELIZABETH STREET

DUNDAS STREET

QUEENS AVE

ENGLISH STREET



THE INCORPORATION OF THE CITY OF LONDON ENVIRONMENTAL SERVICES DEPARTMENT



[Handwritten signature]

Date : MAR 01 5, 1997

Scale : N.T.S.

Drawing : SDR

File No. :

Plan No. :

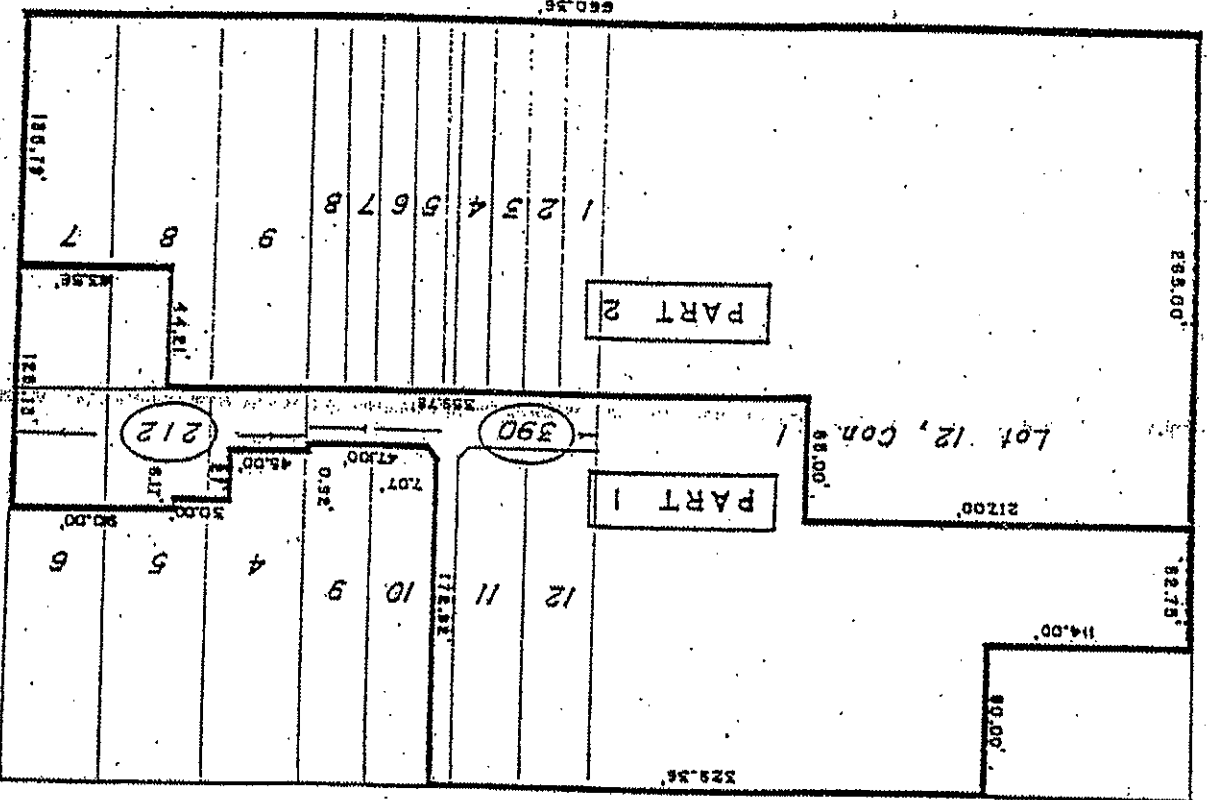
A-1044

ADELAIDE STREET

DUNDAS STREET

QUEENS AVENUE

ELIZABETH STREET



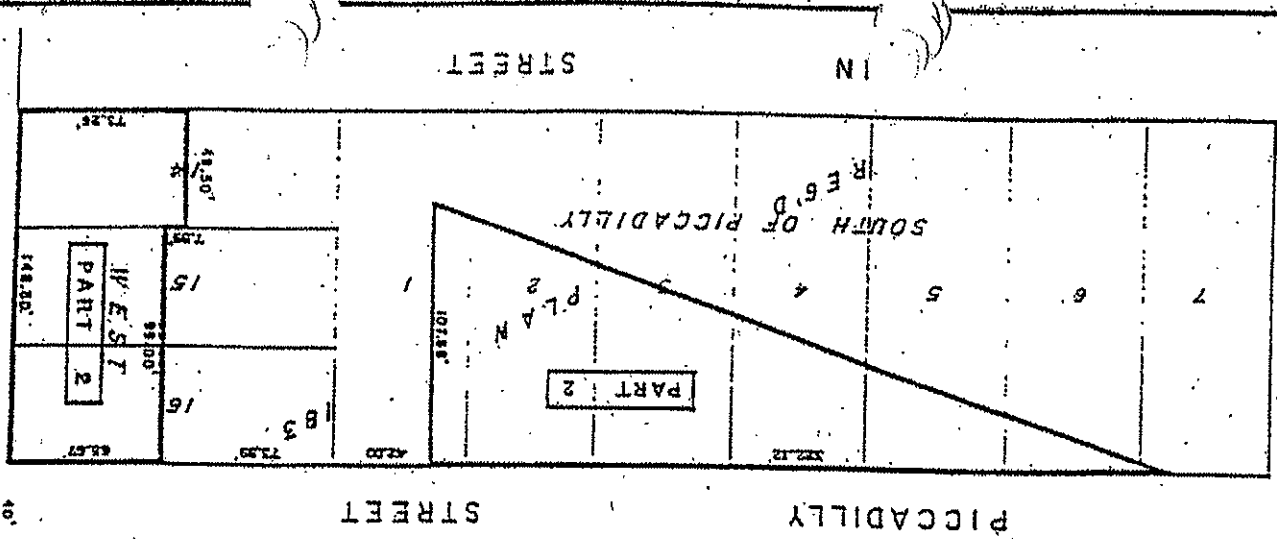
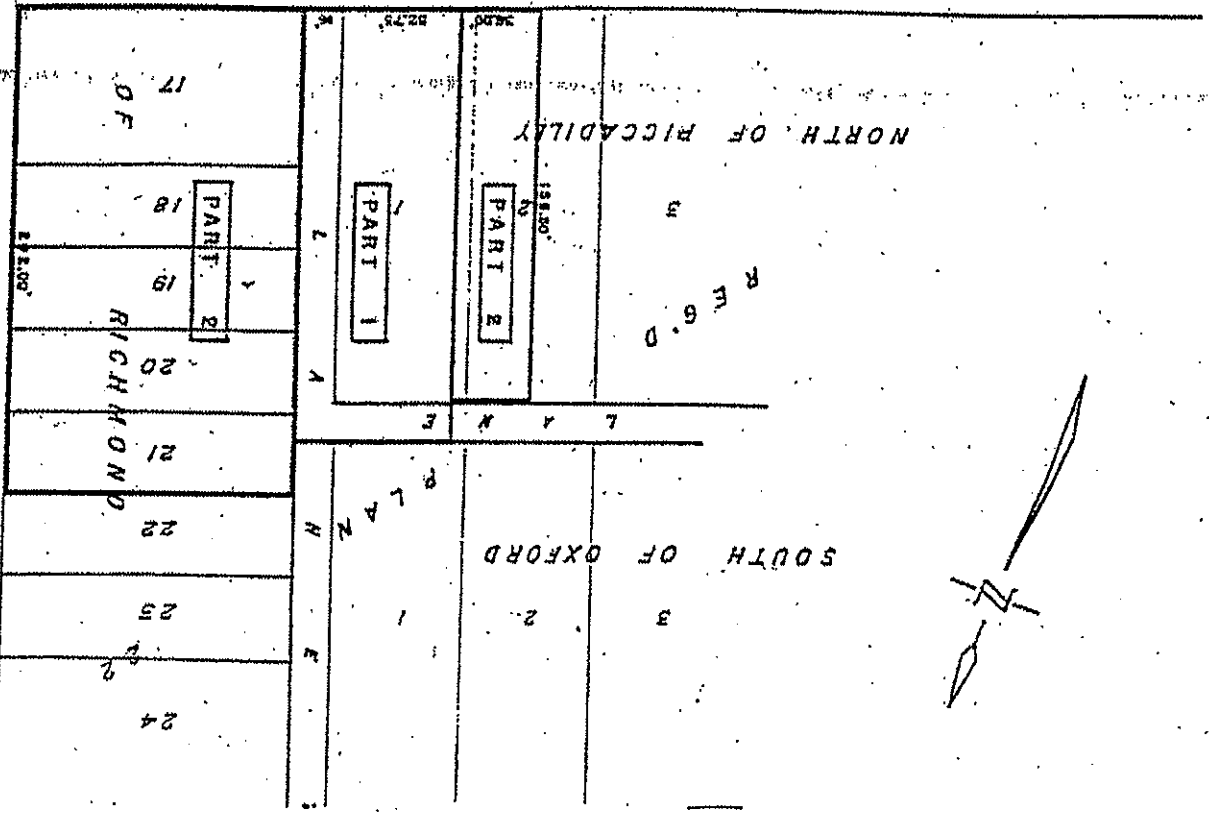
CITY ENGINEER'S DEPT.
LAND SURVEYS DIVISION
London
Ontario

C. B. Chapman
C. B. Chapman O.L.S.

Date 18 June 1971
Scale 1/4" = 100' 11
Dwg. W.R.
Plan No.
A-700

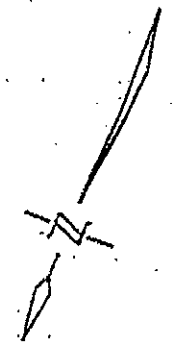
27
 Date: _____
 City Engineer's Dept.
 Land Surveys Division
 London, Ontario

R I C H M O N D S T R E E T



P I C C A D I L L Y S T R E E T

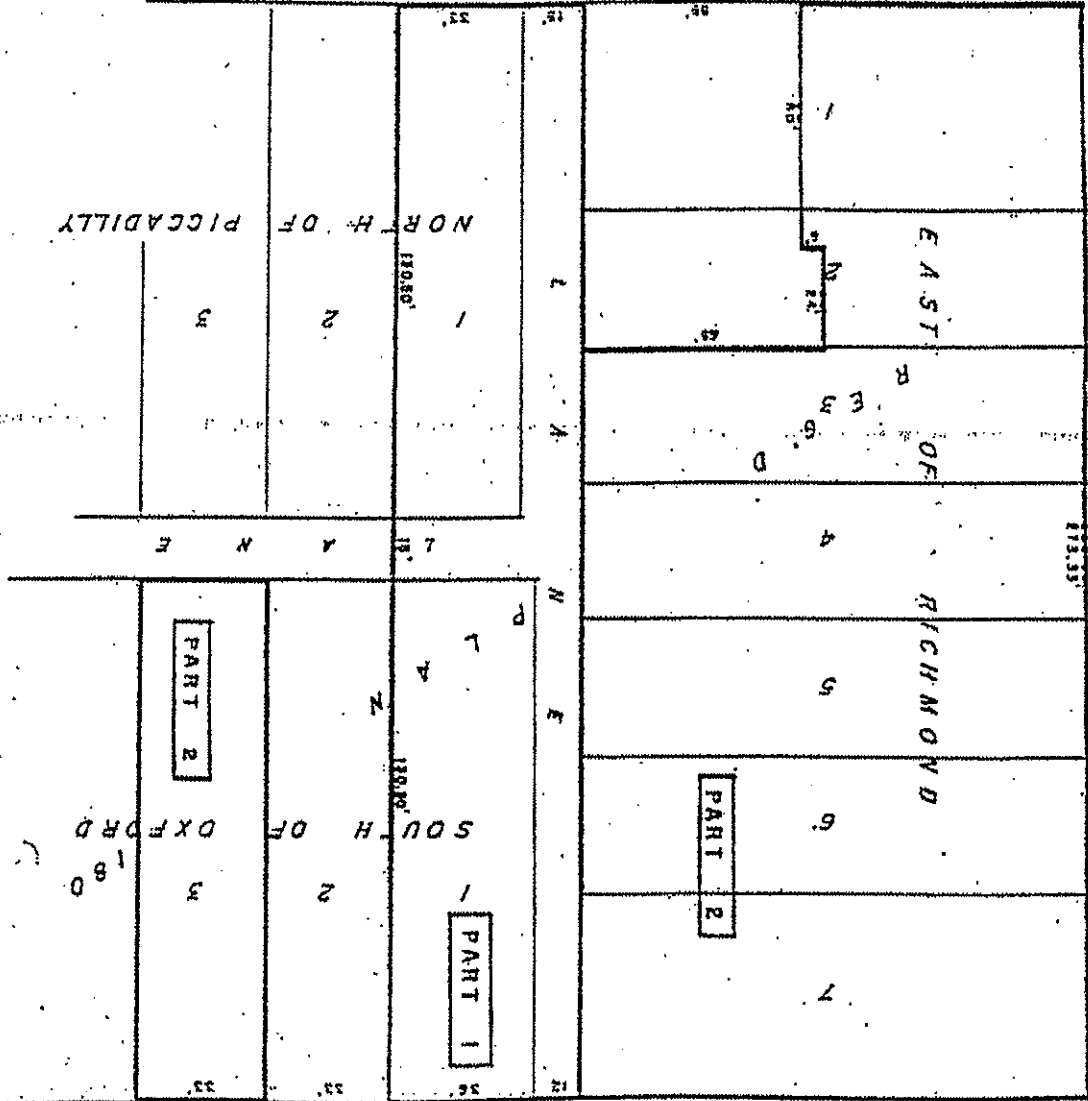
P I C C A D I L L Y S T R E E T



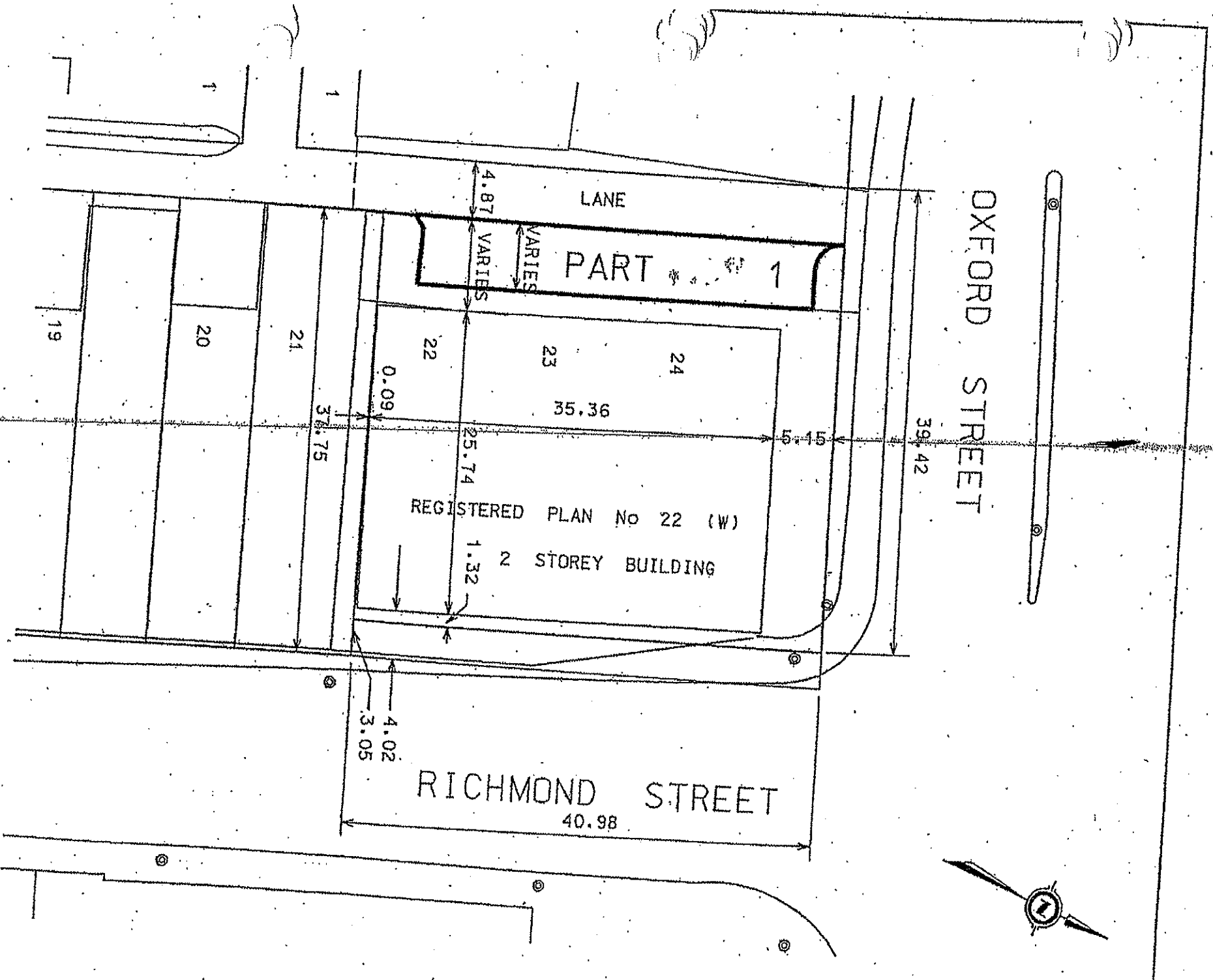
SCHEDULE 22 (PART 3)

RICHMOND STREET

PICCADILLY STREET



Date: JAN 15 1973
 Scale: 1/4" = 20'-0"
 City of Toronto
 City Engineer's Dept.
 Land Surveys Division
 LONDON, ONTARIO



THE CORPORATION OF THE CITY OF LONDON
 ENVIRONMENTAL SERVICES DEPARTMENT
 PREPARED BY: TECHNICAL SERVICES AND INSPECTION DIVISION

PLAN SHOWING
PARKING LOT LEASE AREA
PARKING LOT No 71.

Date :	SEPT 13, 2
Scale :	N.T.S.
Drawing :	
File No. :	
Plan No. :	A-105

ADELAIDE STREET

STREET

KING STREET

STREET

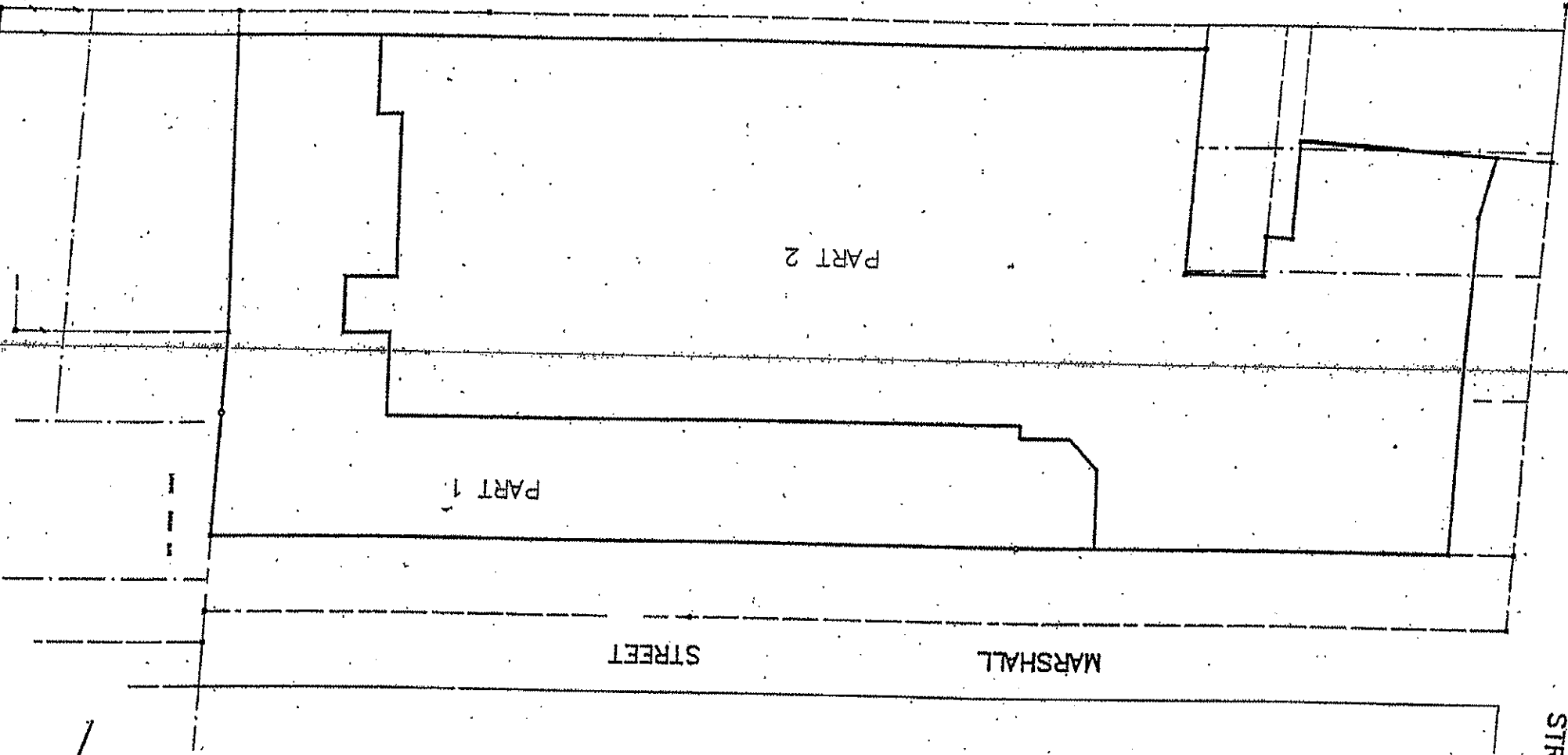
MARSHALL STREET

STREET

LYLE STREET

PART 2

PART 1



THE INCORPORATION OF THE CITY OF LONDON
ENVIRONMENTAL SERVICES DEPARTMENT

[Handwritten signature]
[Handwritten name]

Date : Feb. 19, 1997

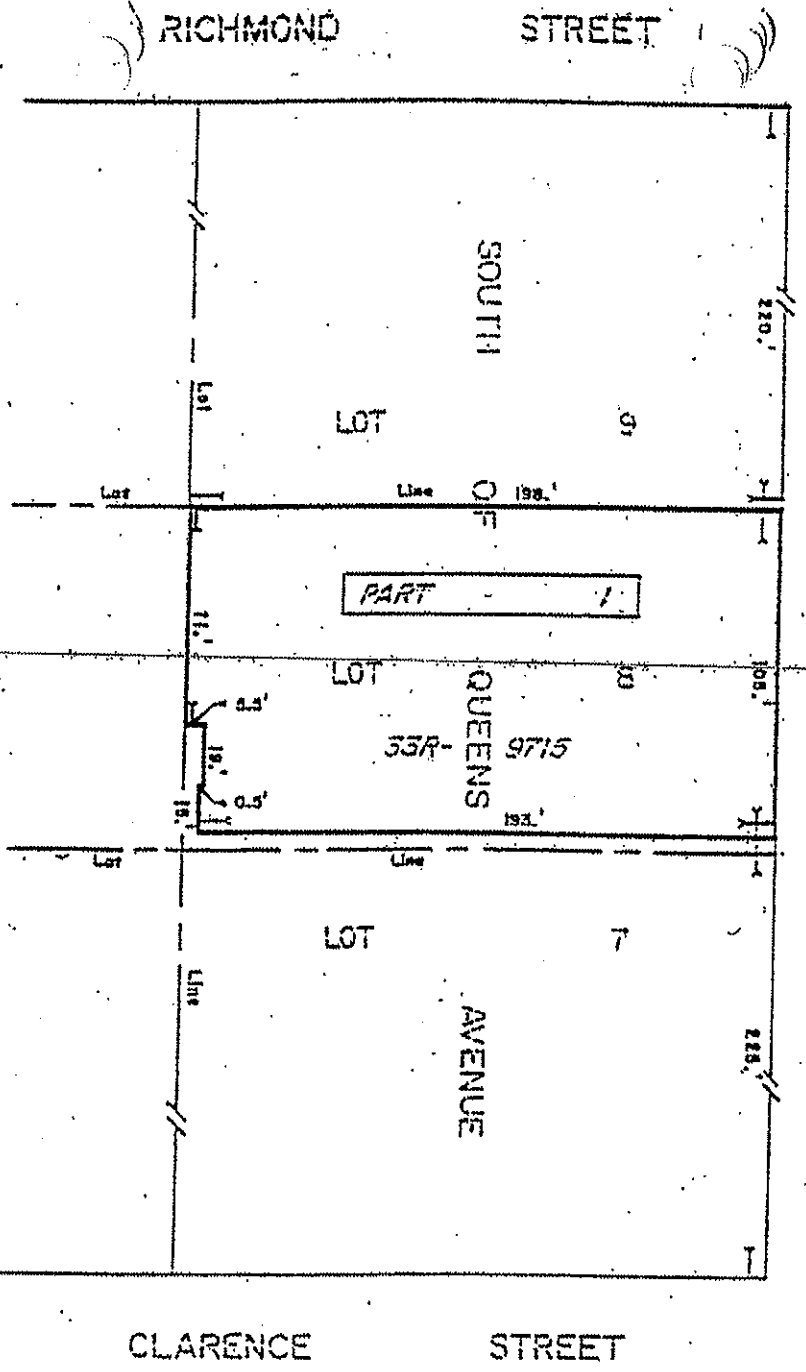
Scale : N.T.S.

Drawing : SDR

File No. :

Plan No. :

A-1043



QUEENS AVENUE

AVENUE

RICHMOND STREET

CLARENCE STREET

SOUTH

QUEENS

AVENUE

LOT 5

LOT 6

LOT 7

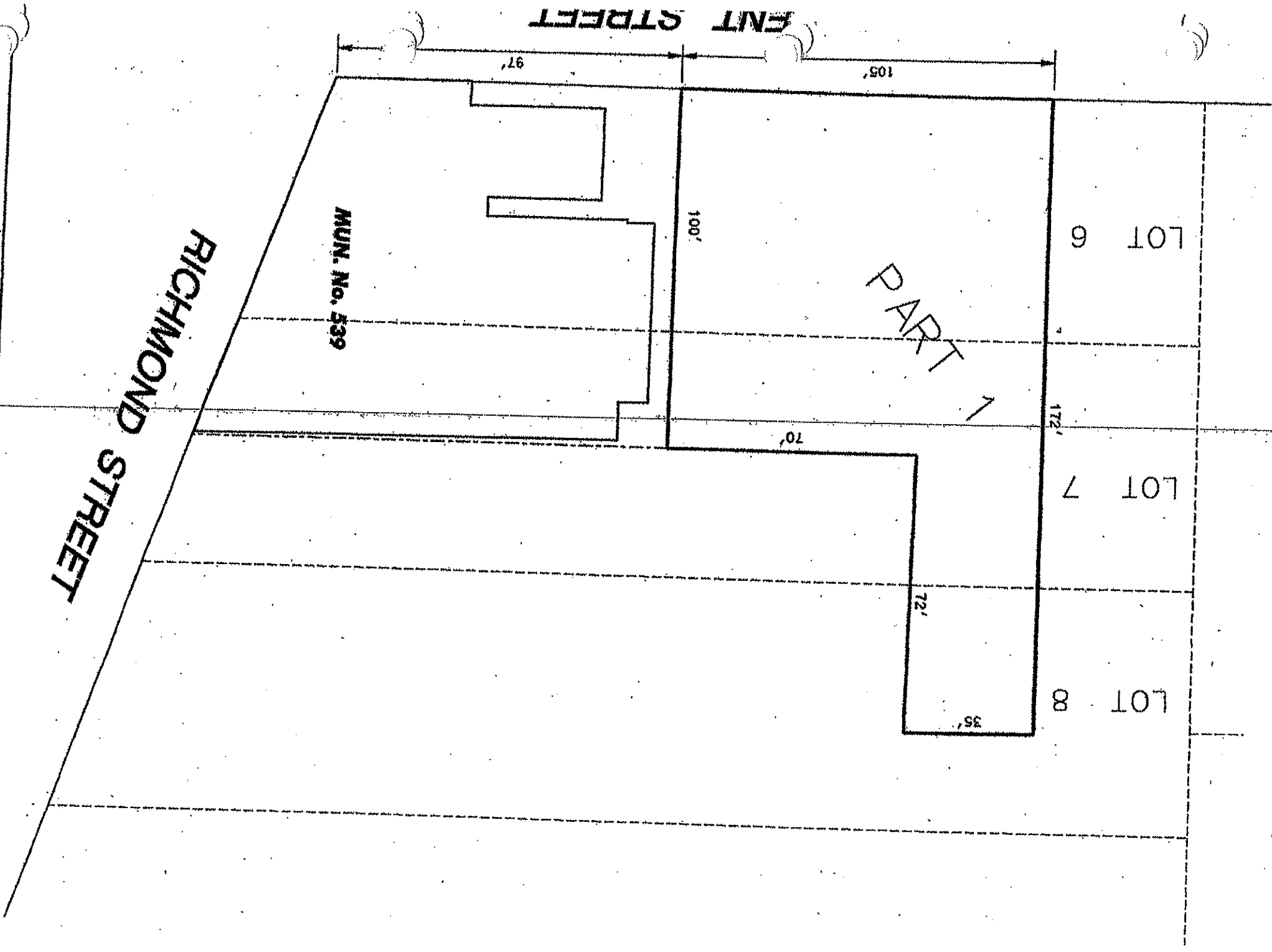
PART

33R-9715

CITY ENGINEER'S DEPT.
 LAND SURVEYS SECTION
 LONDON ONTARIO

[Signature]
 G.B. Chapman
 O.L.S.

Date: June 28, 1993
 Scale: 1" = 60'
 DWG: D.K.
 File No.: 812/02/1
 Plan No.: A-1000



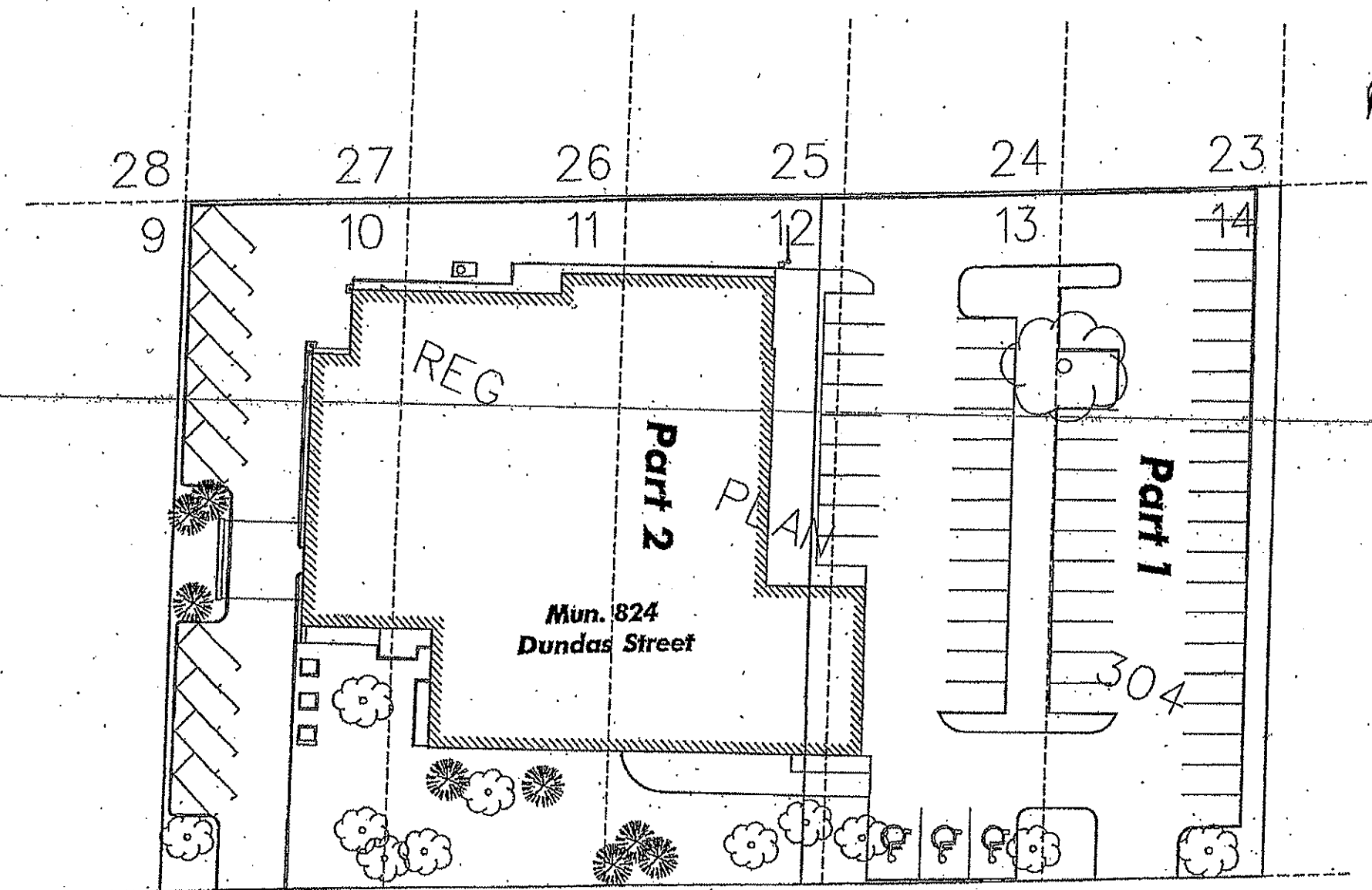
THE CORPORATION OF THE CITY OF LONDON
ENVIRONMENTAL SERVICES DEPARTMENT

PREPARED BY: TECHNICAL SERVICES AND INSPECTION DIVISION
DATE: 14 NOV 2000

**PLAN SHOWING
PARKING LEASE
AREA
PARKING LOT #6**

Date : NOV. 14, 2000
Scale : N.T.S.
Drawing : SDR
File No. :
Plan No. : A-1054

**SCHEDULE 22
(Part 7)**



Dundas Street



London
CANADA

THE CORPORATION OF THE CITY OF LONDON
ENVIRONMENTAL SERVICES DEPARTMENT
PREPARED BY: TECHNICAL SERVICES AND INSPECTION DIVISION

**Plan Showing
Parking Lot
Lease Area
Parking Lot No. 7**

Date : October 31, 20

Scale - 1:500

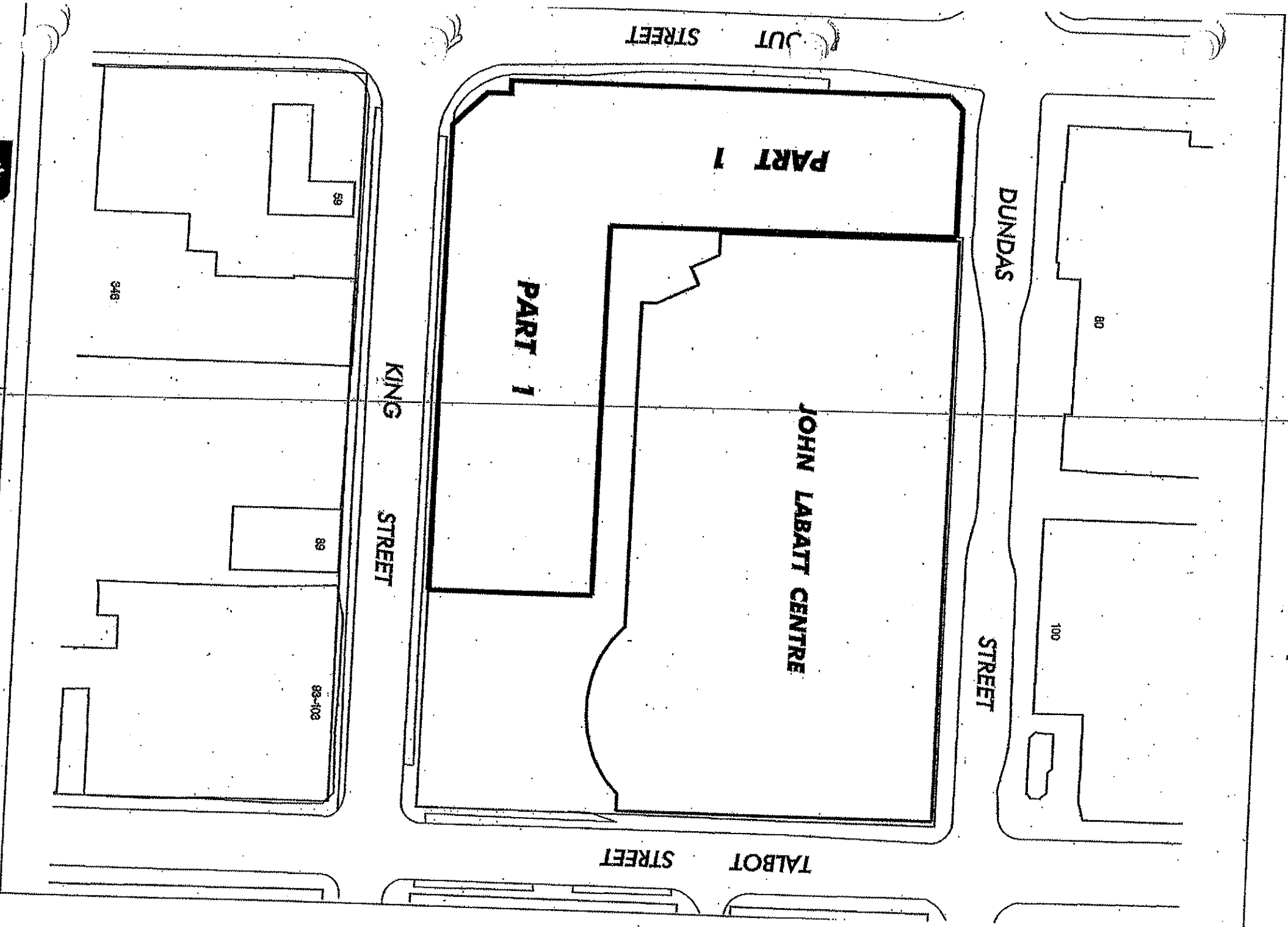
Drawing :

File No. - 812/D37/8

Plan No. :

A-1055

SCHEDULE 22 (PART 8)



London
CANADA

THE CORPORATION OF THE CITY OF LONDON
ENVIRONMENTAL SERVICES DEPARTMENT
PREPARED BY: TECHNICAL SERVICES AND INSPECTION DIVISION

Plan Showing
**JOHN LABATT CENTRE
PARKING AREA
KING ST. AT RIDOUT ST.**

Date : Sept. 18, 2002

Scale - 1:1000

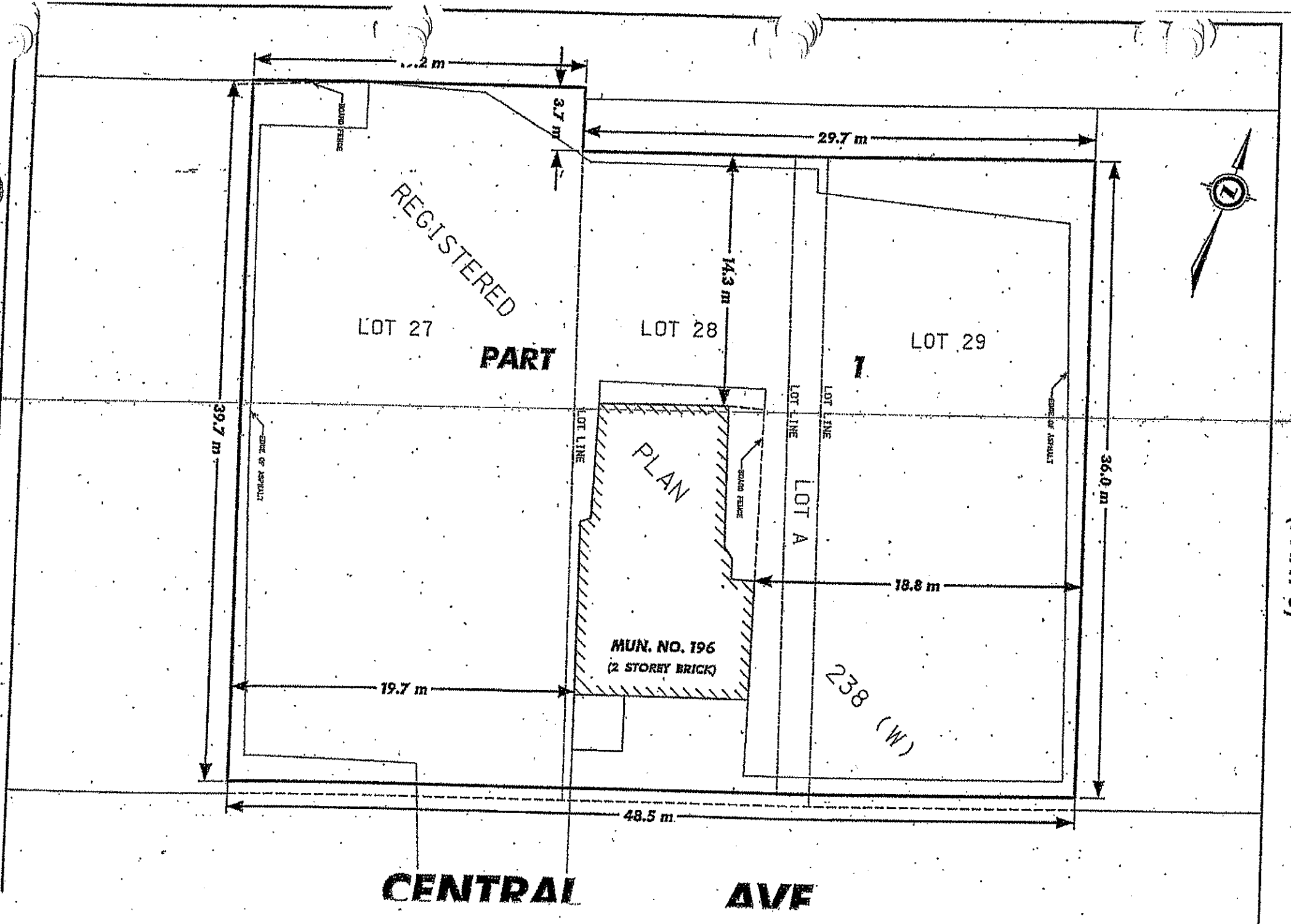
Drawing :

File No. -

Plan No. :

A-1061

SCHEDULE 22 (PART 9)



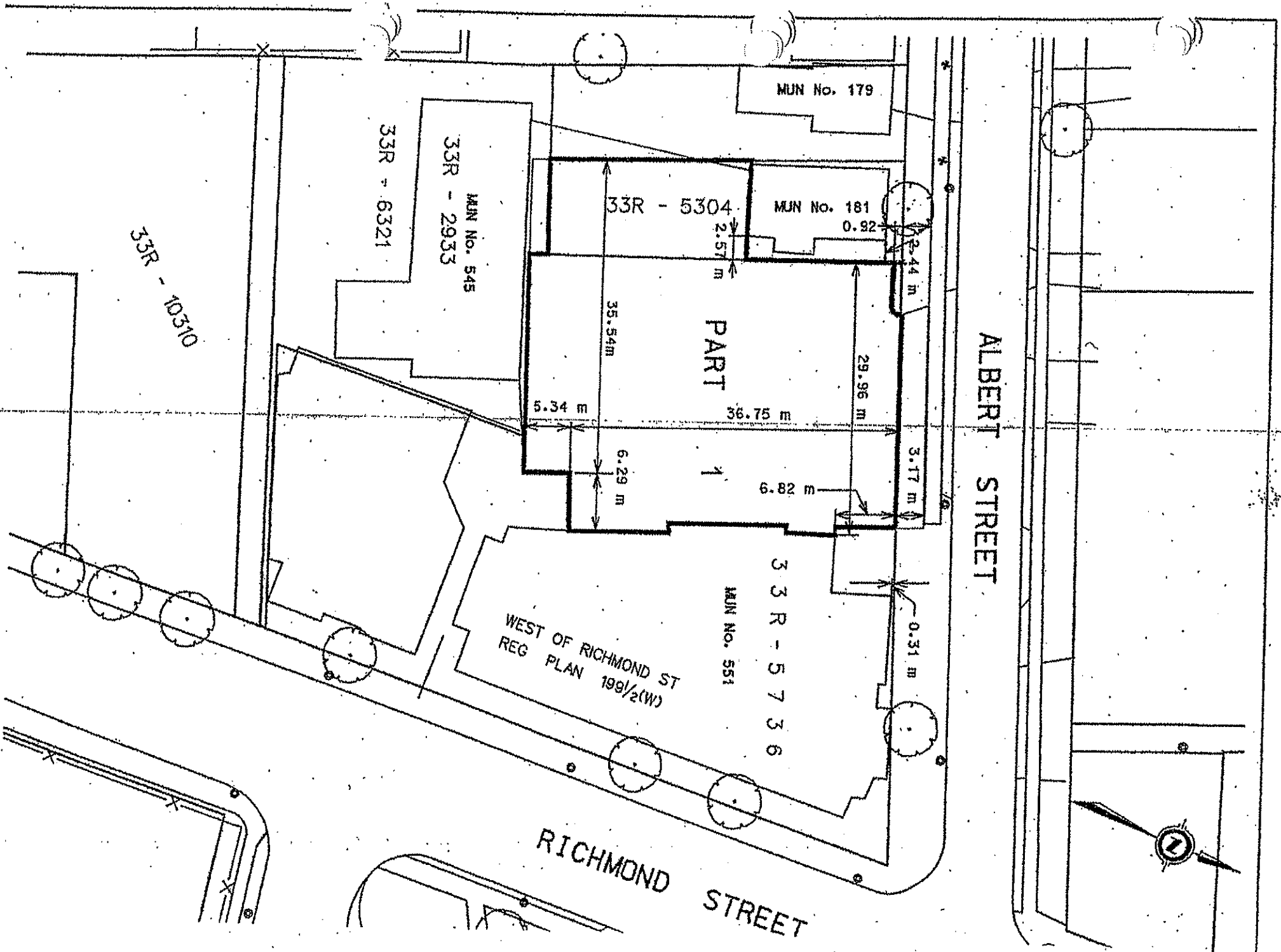
CENTRAL AVE

THE CORPORATION OF THE CITY OF LONDON
 ENVIRONMENTAL SERVICES DEPARTMENT
 PREPARED BY: TECHNICAL SERVICES AND INSPECTION DIVISION



PLAN SHOWING
PARKING LOT LEASE AREA
PARKING LOT No. 9

Date :	July 28, 21
Scale :	1:250
Drawing :	
File No. :	B12/C25
Plan No. :	A-105

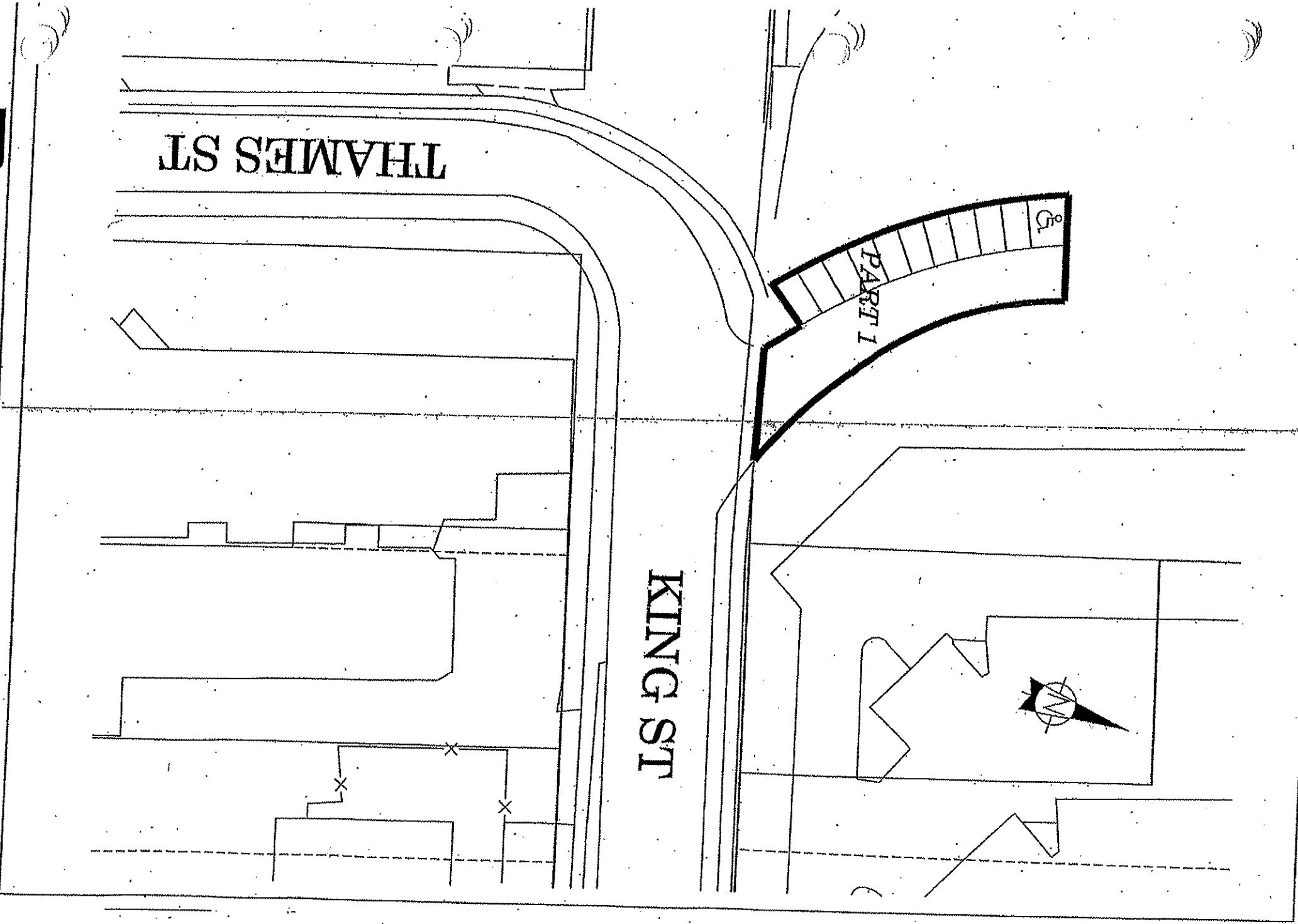


THE CORPORATION OF THE CITY OF LONDON
ENVIRONMENTAL SERVICES DEPARTMENT
PREPARED BY: TECHNICAL SERVICES AND INSPECTION DIVISION

PLAN SHOWING
PARKING LOT LEASE AREA
PARKING LOT NO 10

Date : SEPTEMBER
Scale = N.T.S.
Drawing :
File No. :
Plan No. :
A-10

SCHEDULE 22 (PART 11)



London
CANADA
CORPORATION OF THE CITY OF LONDON
IRONMENTAL SERVICES DEPARTMENT

Plan Showing
Parking Lot 11
FORKS PARK
NORTH OF KING ST.
EAST OF THAMES ST.

Date : May 13, 2002

Scale = 1:500

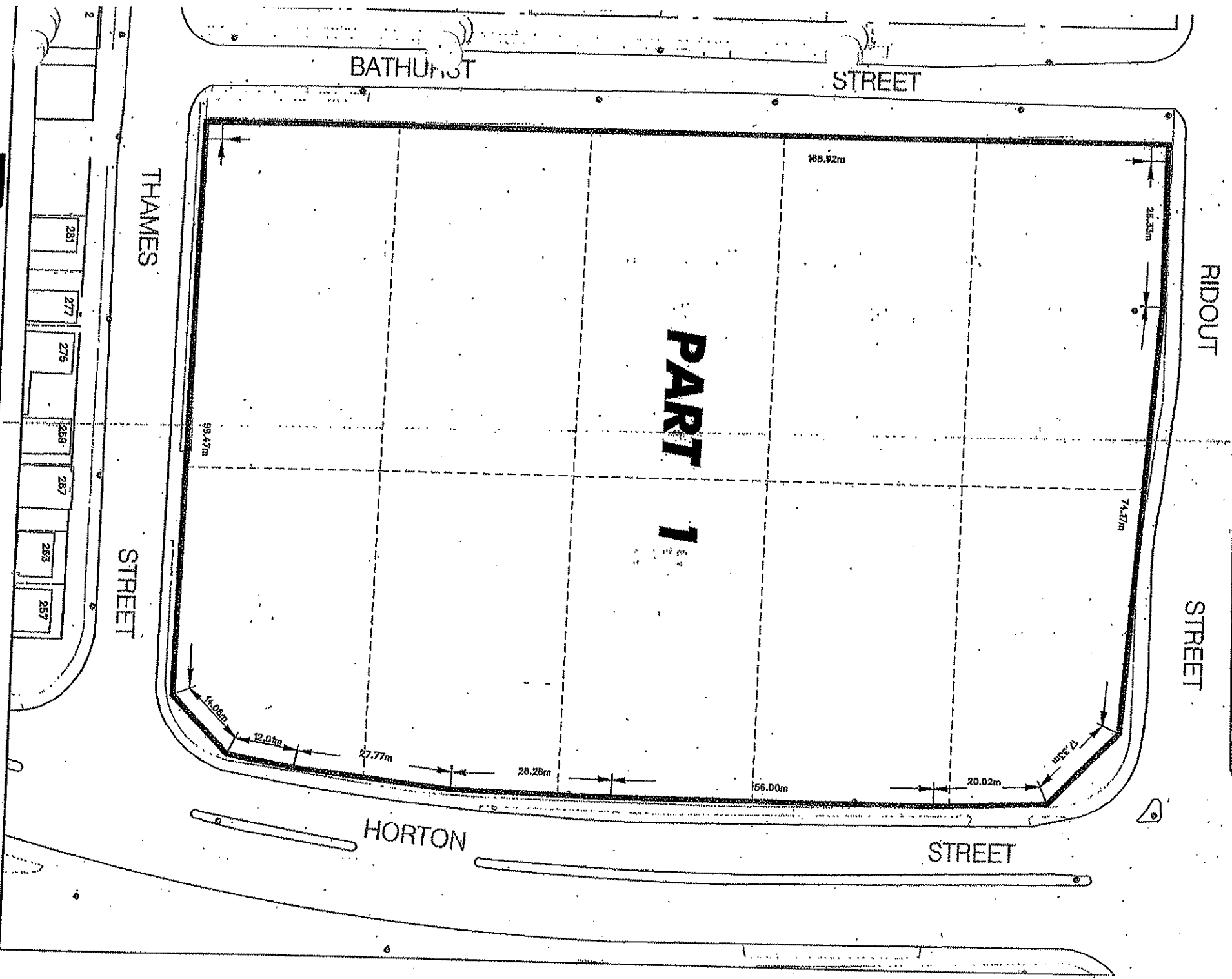
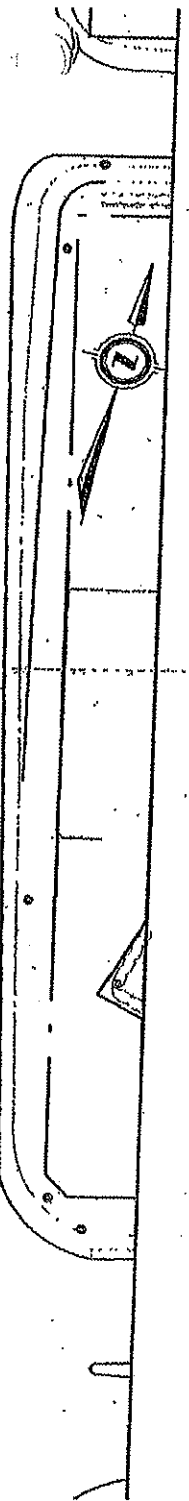
Drawing :

File No. :

Plan No. :

A-105R

SCHEDULE 22 (Part 12)



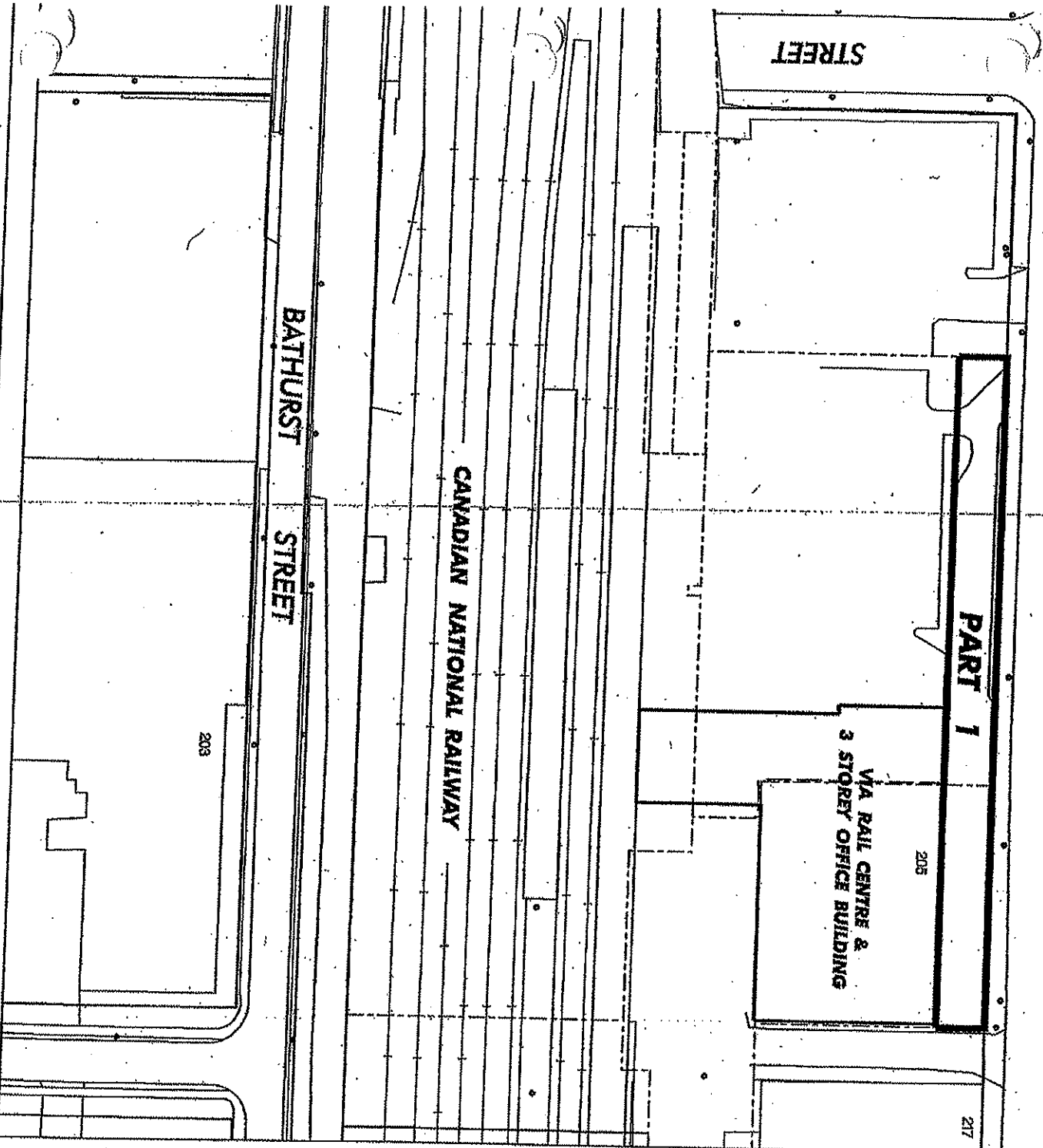
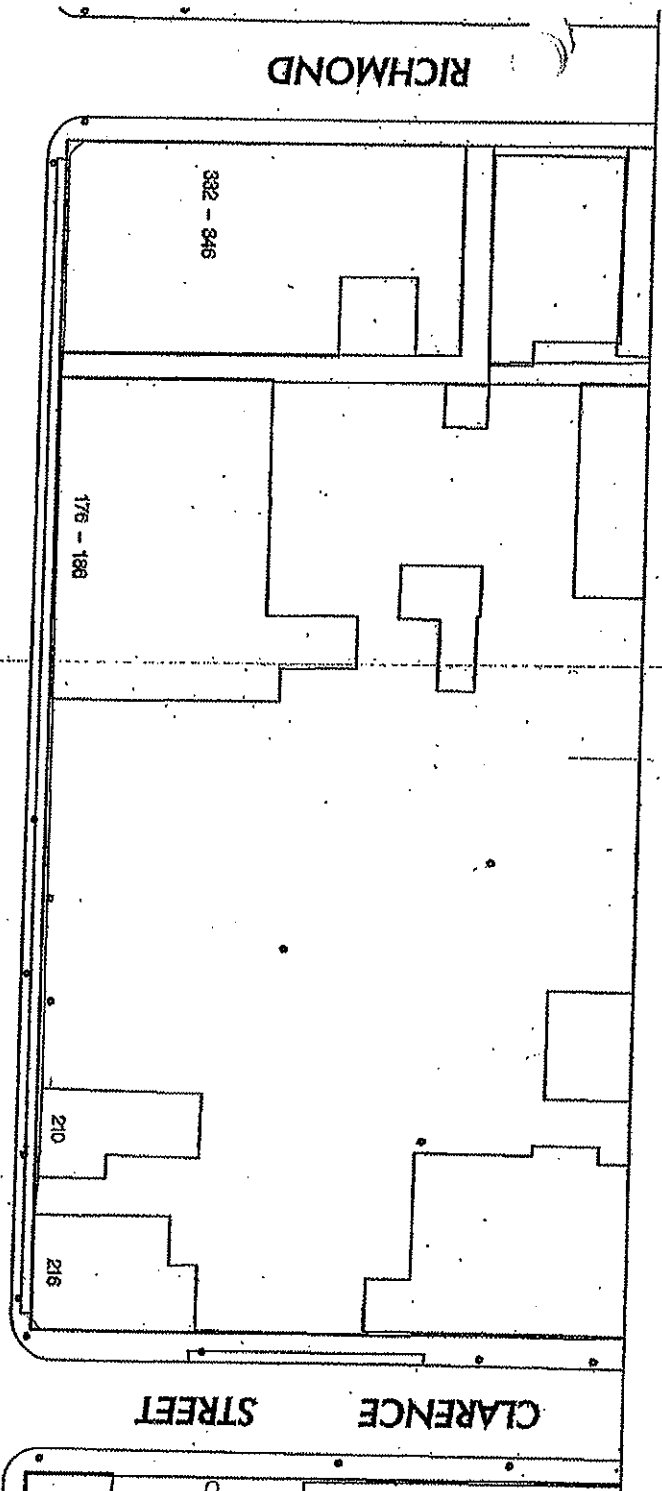
THE CORPORATION OF THE CITY OF LONDON
 ENVIRONMENTAL SERVICES DEPARTMENT
 PREPARED BY: TECHNICAL SERVICES AND INSPECTION DIVISION

**PARKING LOT
 LEASE AREA
 PARKING LOT No. 12**

Date : APR. 12/02
Scale - 1:1800
Drawing : A-1057.DGN
File No. :
Plan No. :

A-1057

SCHEDULE 22 (PART 14)



London
CANADA

THE CORPORATION OF THE CITY OF LONDON
ENVIRONMENTAL SERVICES DEPARTMENT
PREPARED BY: TECHNICAL SERVICES AND INSPECTION DIVISION

**Plan Showing
Parking Lot 14
205 YORK ST.
CN RAIL STATION**

Date: Sept. 23, 2002

Scale: 1:1000

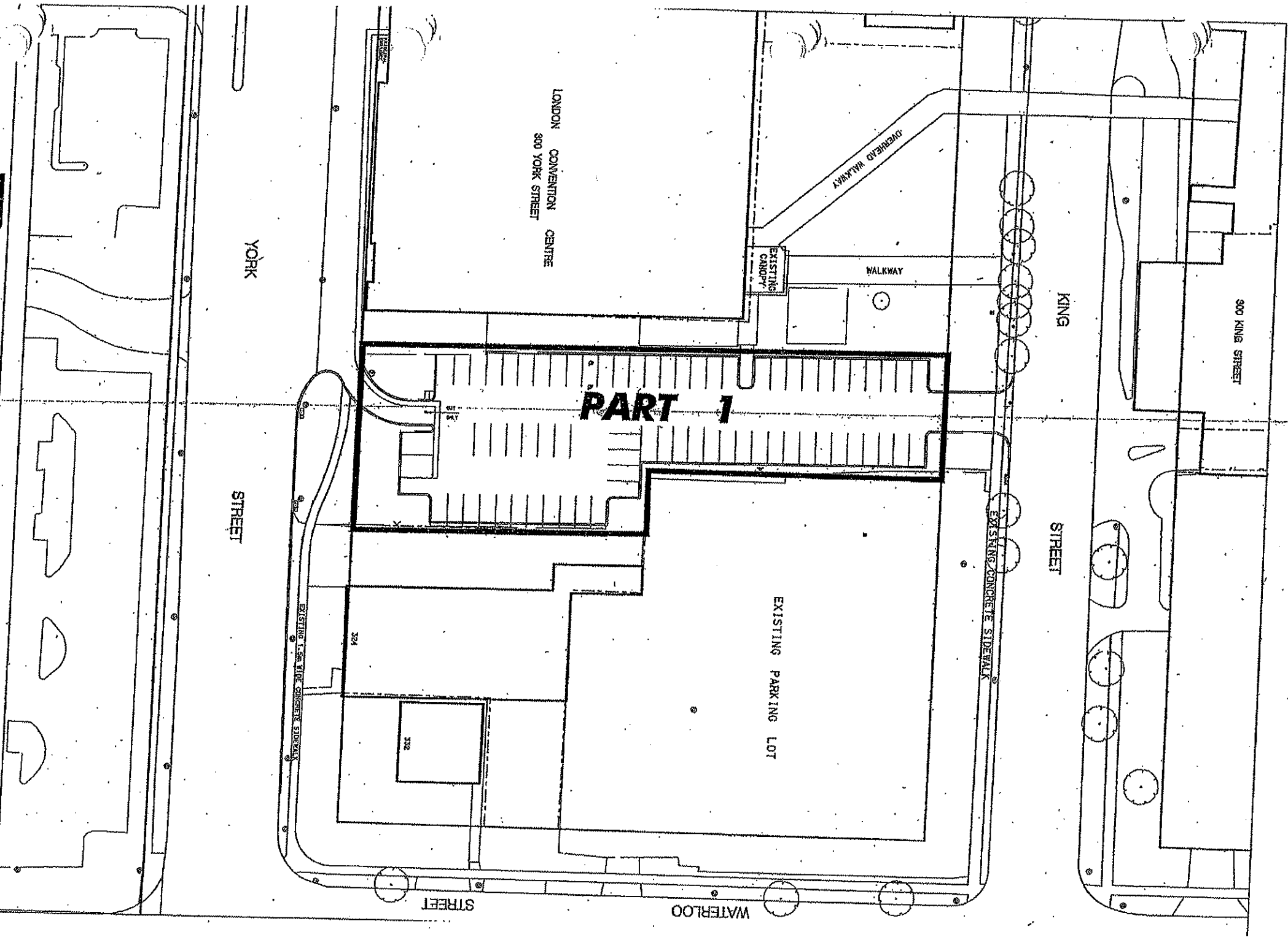
Drawing: 1

File No.:

Plan No.:

A-1062

SCHEDULE 22 (PART 15)

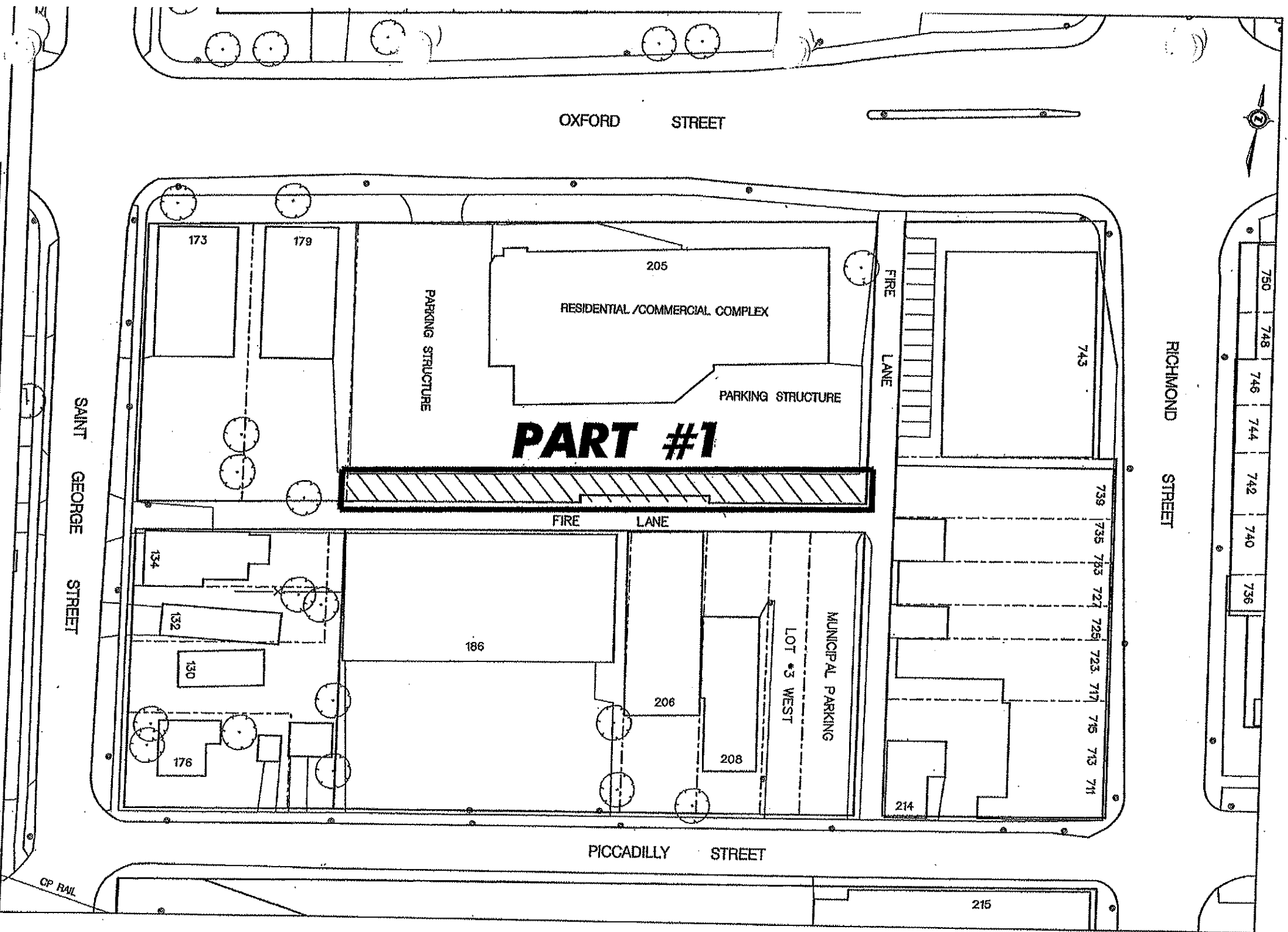


London
 THE CORPORATION OF THE CITY OF LONDON
 ENVIRONMENTAL SERVICES DEPARTMENT
 PREPARED BY: GEOMATICS DIVISION

**Plan Showing
 Parking Lot 15
 300 YORK ST.
 LONDON
 CONVENTION CENTRE**

Date :	Sept. 05, 2003
Scale :	NTS
Drawing :	
File No. :	
Plan No. :	A-1063

SCHEDULE 22 (PART 16)



London
CANADA

THE CORPORATION OF THE CITY OF LONDON
ENVIRONMENTAL AND ENGINEERING SERVICES DEPARTMENT

PREPARED BY GEOMATICS DIVISION

**Plan Showing
Parking Lot 16
AT THE REAR
OF 205 OXFORD
STREET EAST**

Date : March 1, 2004

Scale : 1:750

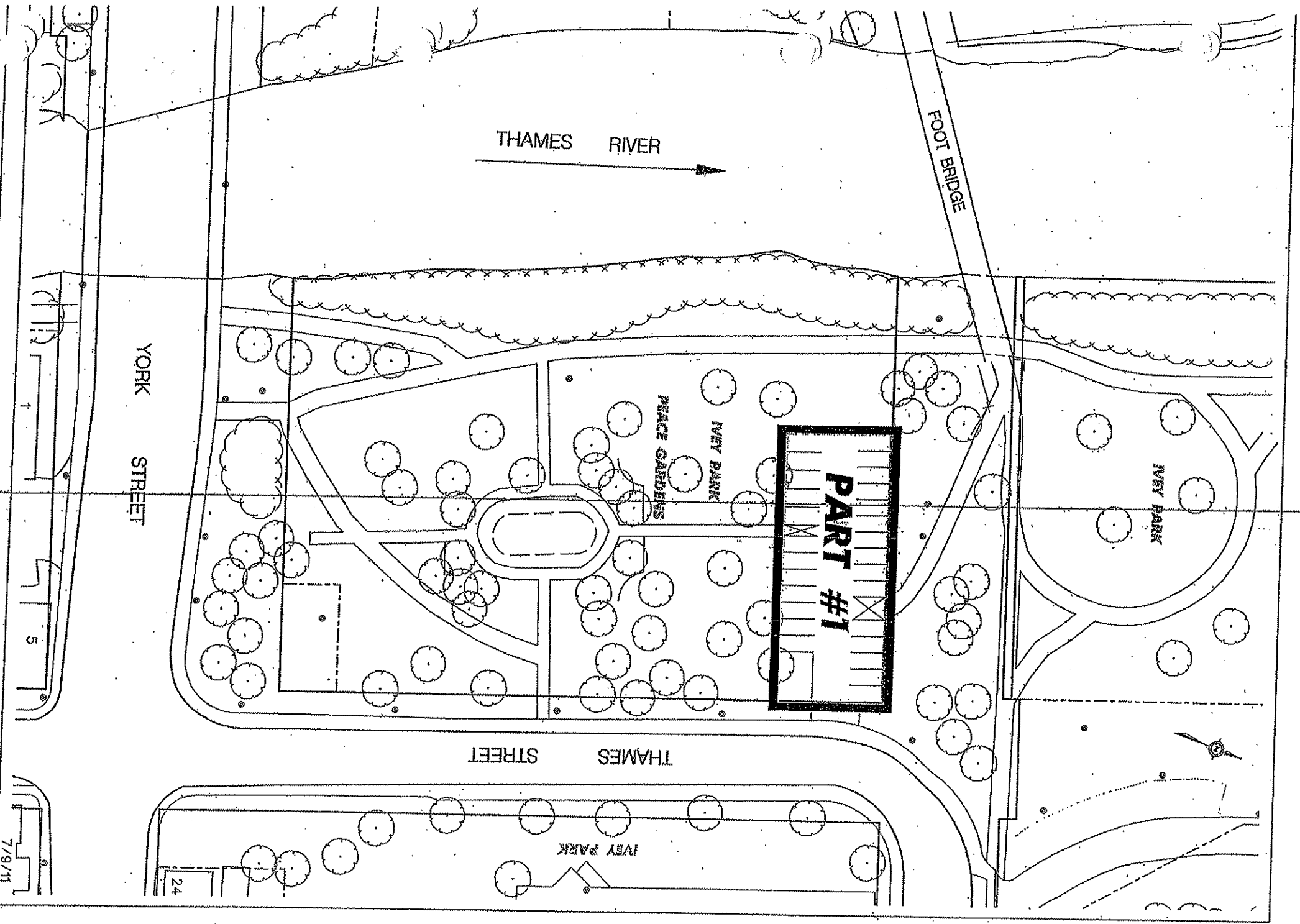
Drawing :

File No. :

Plan No. :

A-1065

SCHEDULE 22 (PART 17)



London
CANADA

THE CORPORATION OF THE CITY OF LONDON
ENVIRONMENTAL AND ENGINEERING
SERVICES DEPARTMENT

DEED BY: GEOMATICS DIVISION

**Plan Showing
Parking Lot 17
Peace Gardens
Parking Lot**

Date : APRIL 14, 2004

Scale - 1:750

Drawing :

File No. -

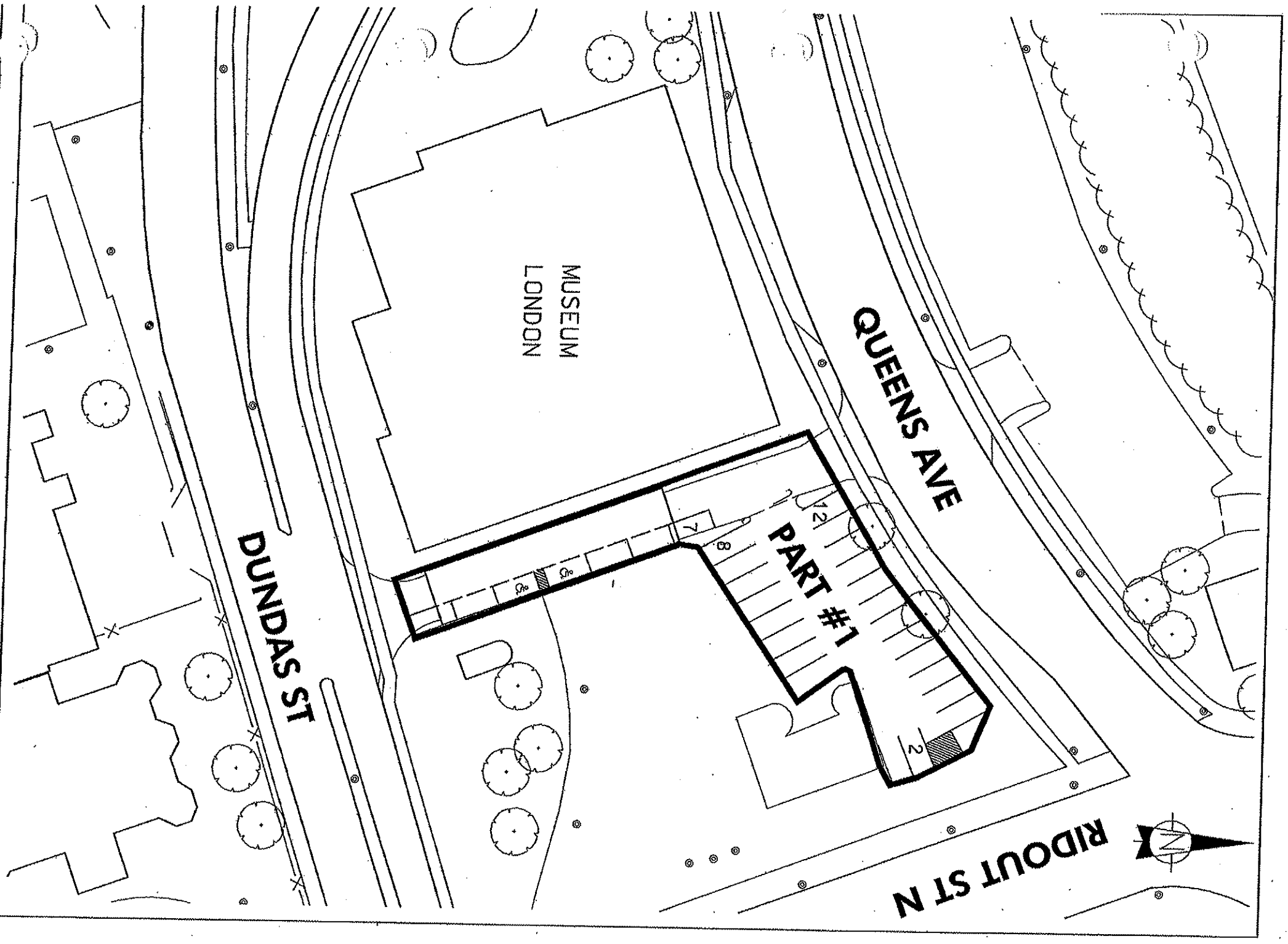
Plan No. :

A-1066

7/9/11

24

SCHEDULE 22 (PART 19)

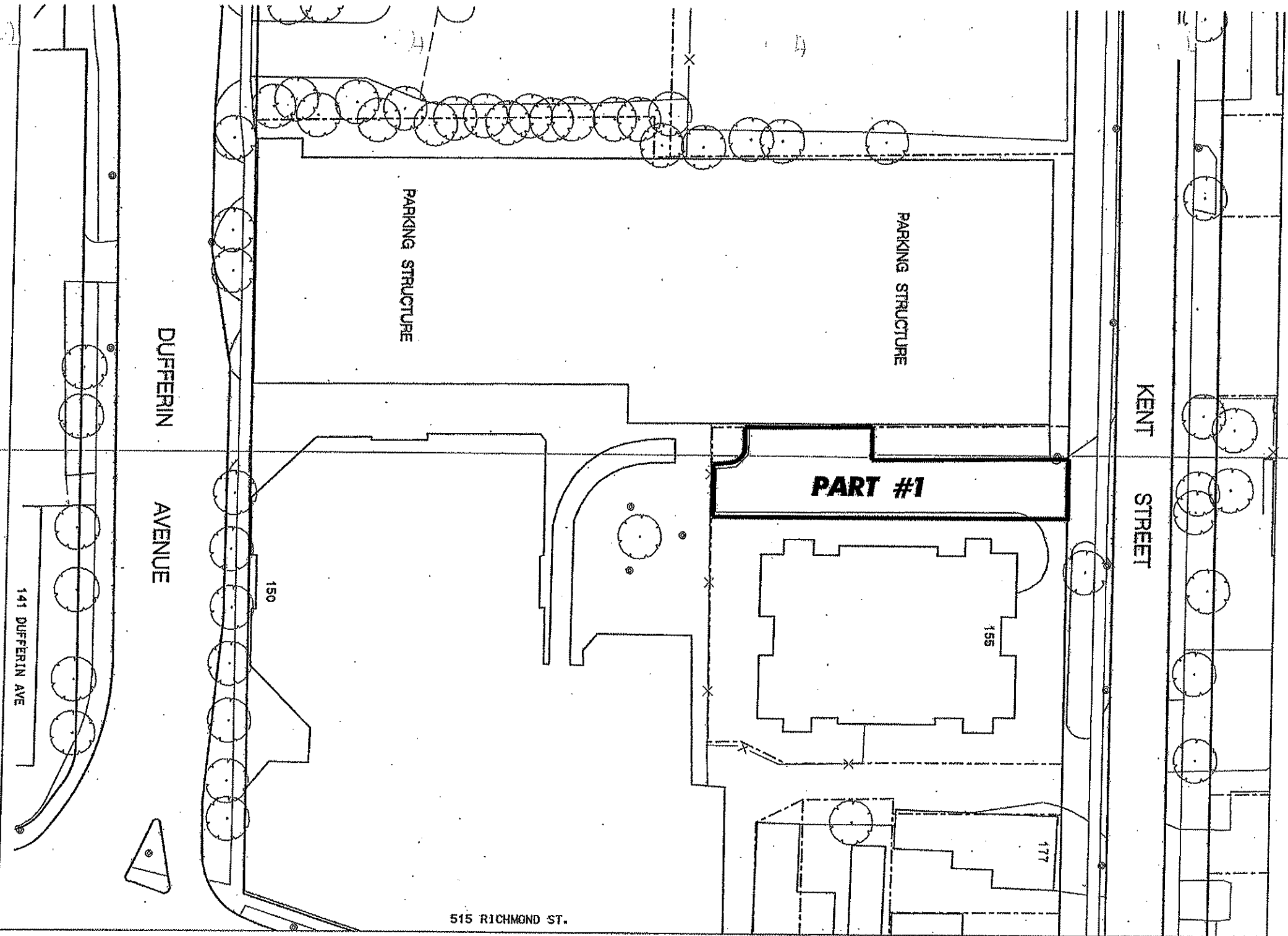


THE CORPORATION OF THE CITY OF LONDON
ENVIRONMENTAL SERVICES DEPARTMENT
PREPARED BY: TECHNICAL SERVICES AND INSPECTION DIVISION

Plan Showing
Parking Lot 19
MUSEUM LONDON
421 RIDOUT ST. N.

Date :	Oct 06, 2005
Scale -	1:500
Drawing :	
File No. -	
Plan No. :	A-1069

SCHEDULE 22 (PART 20)



London
CITY COUNCIL

THE CORPORATION OF THE CITY OF LONDON
ENVIRONMENTAL AND ENGINEERING
SERVICES DEPARTMENT

PREPARED BY GEOMATICS DIVISION

Parking By-Law A-1070.dgn 2006-02-24 08:50:47 AM

**Plan Showing
Parking Lot 20
155 KENT STREET**

Date : Feb. 23, 2006

Scale = 1:600

Drawing :

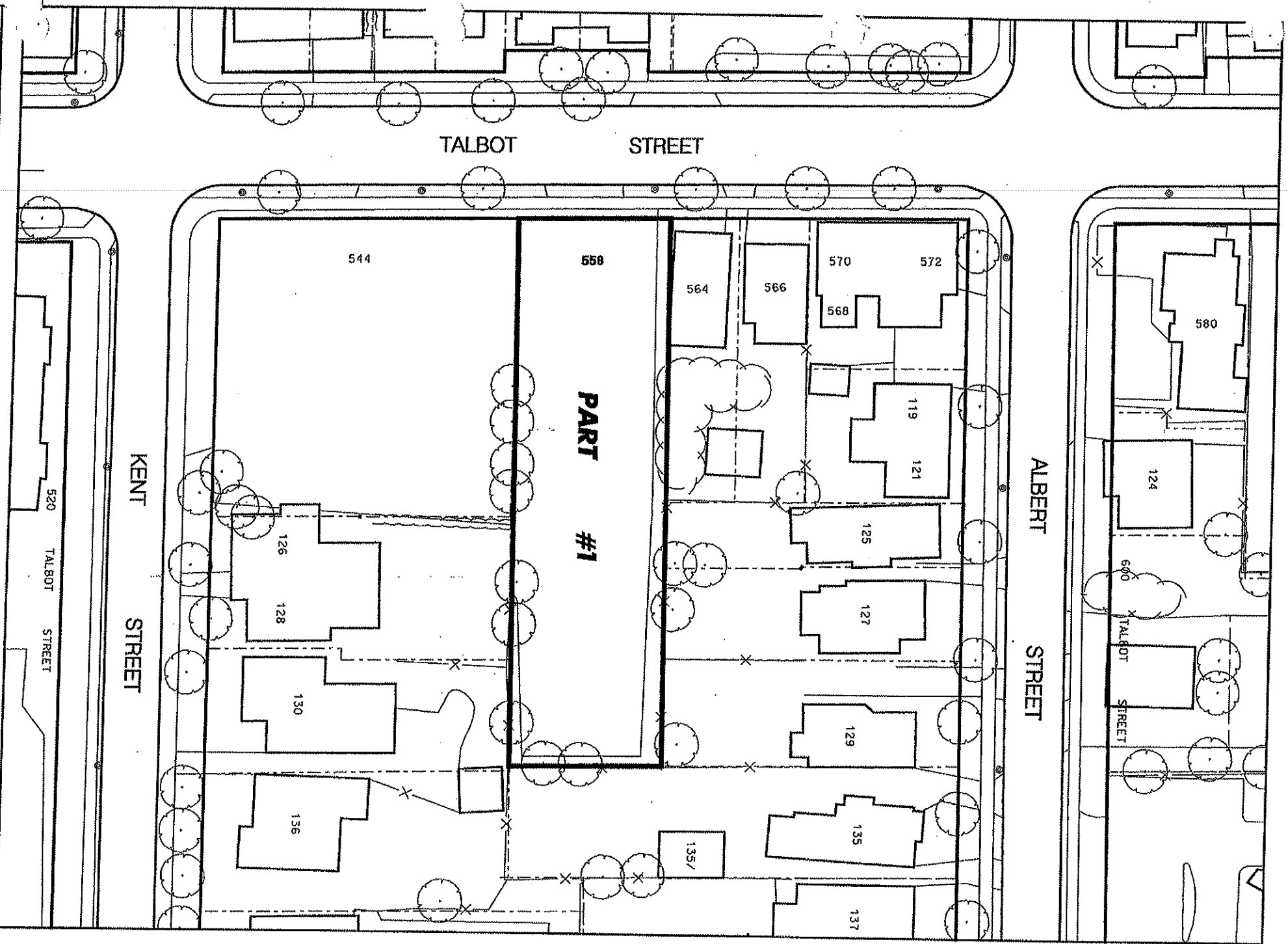
File No. =


Plan No. :


A-1070

515 RICHMOND ST.

SCHEDULE 22 (PART 21)

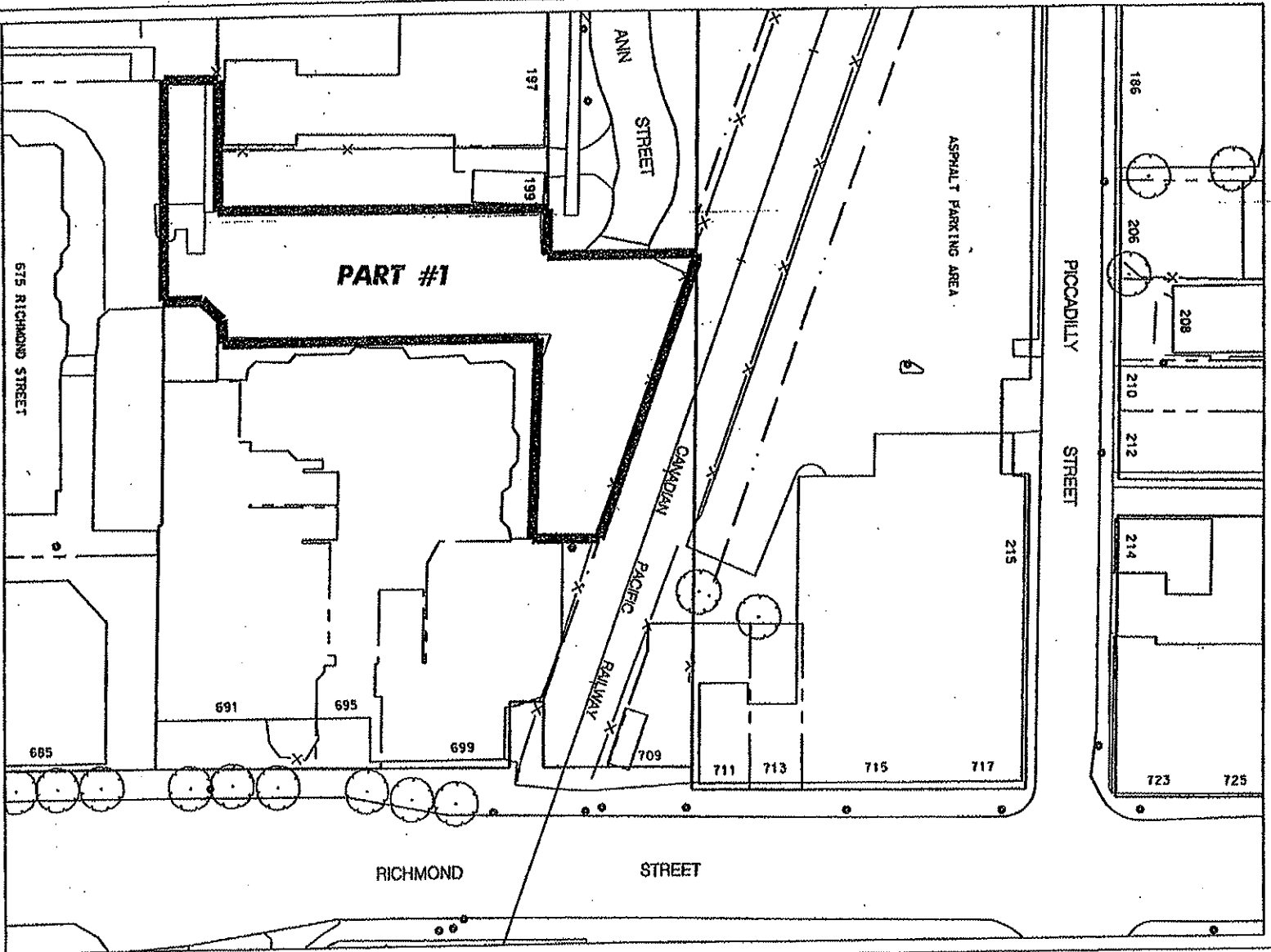




London
THE CORPORATION OF THE CITY OF LONDON
ENVIRONMENTAL AND ENGINEERING
SERVICES DEPARTMENT
PREPARED BY: GEORGIAS DIVISION


**Plan Showing
Parking Lot 21
558 TALBOT STREET**

Date :	August 3, 2007
Scale :	1:600
Drawing :	
File No. :	
Plan No. :	A-1071

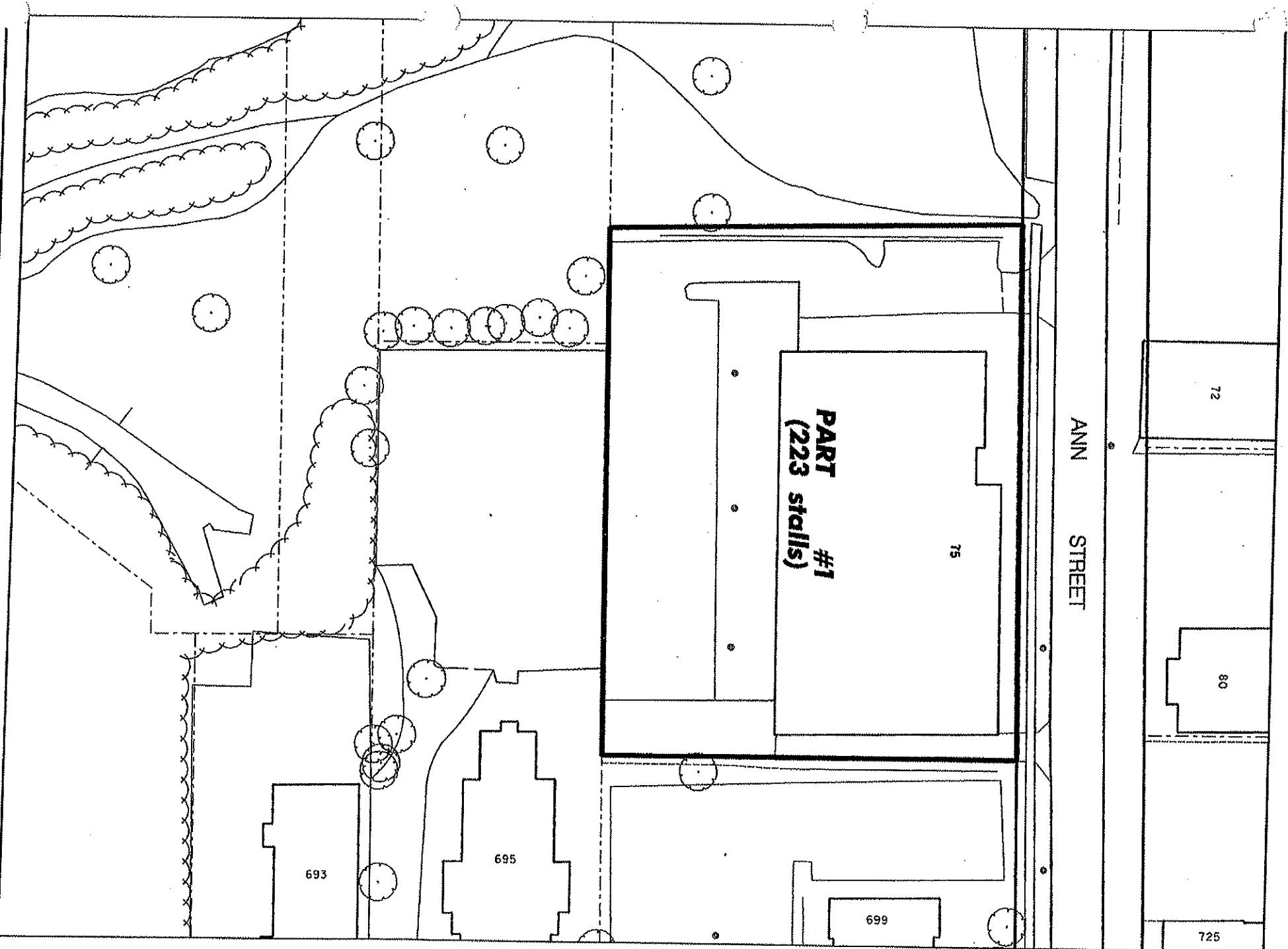
SCHEDULE 22 (PART 22)



 <p>THE CORPORATION OF THE CITY OF LONDON ENVIRONMENTAL AND ENGINEERING SERVICES DEPARTMENT</p> <p>PREPARED BY: GEORGIOS DAVSOS</p>	<p>Plan Showing Parking Lot 22</p> <p>695 RICHMOND STREET</p>	Date : Jan. 7, 2010
		File No. :
<p>Scale : 1:500</p>		Drawing :
<p>Plot No. :</p>		A-1072

\\Parking By-LAWA-1072.dgn 2010-01-08 2:17:40 PM

SCHEDULE 22 (PART 23)



London
CANADA

THE CORPORATION OF THE CITY OF LONDON
ENVIRONMENTAL AND ENGINEERING
SERVICES DEPARTMENT

PREPARED BY: SEQUOIA DIVISION



**Plan Showing
Parking Lot 23
75 ANN STREET**

Date : August 22, 2007

Scale : 1:750

Drawing :

File No. :

Plan No. :

A-1073