

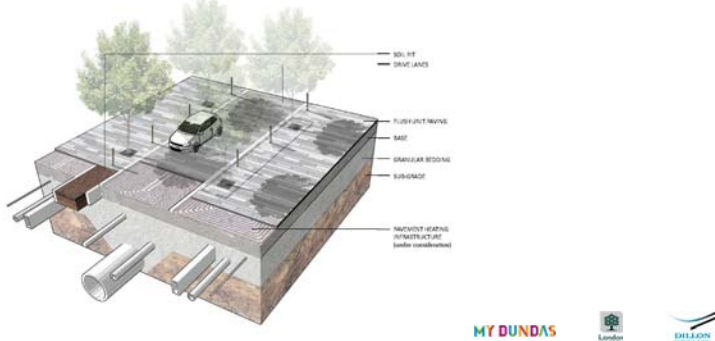
June 2016 "Sights and Sounds of Dundas" Event



Public Space Public Life Survey



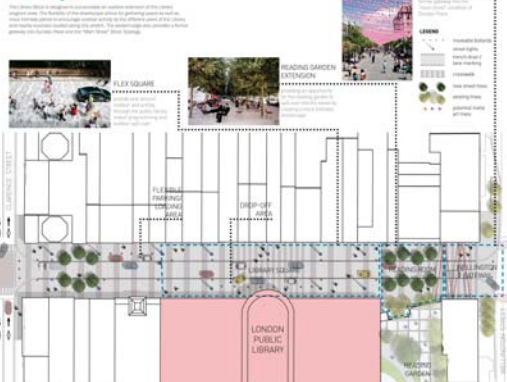
Design Development – Underground Infrastructure



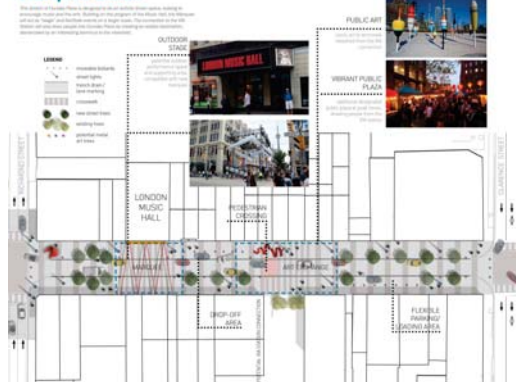
Overall Concept

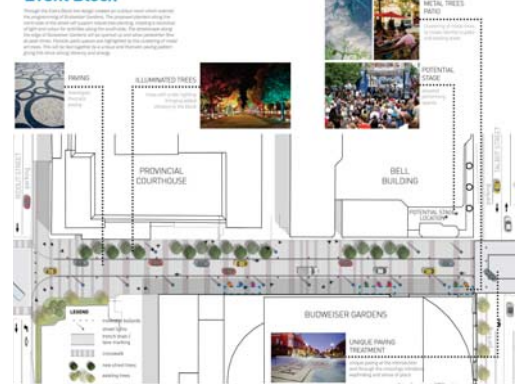
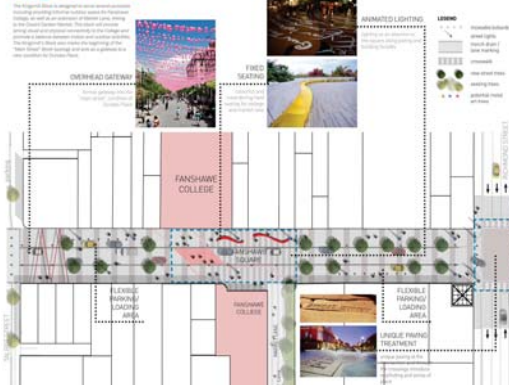


Library Block



Marquee Block





Snow Melt System

Assessment Undertaken

Reduce or eliminate snow and ice accumulation along Dundas Place, reducing/eliminating need for snow removal

Steam from the Veresen London District Energy System could provide thermal energy for the system

Costs are not available in the Dundas Place budget so the system is not recommended



Capital and Operating Cost Estimates

Phase 1 Capital Cost – Ridout Street to Wellington Street
\$15,240,000 – within approved budget

Phase 2 Capital Cost – Thames River to Ridout Street
\$2,525,000 – to be further refined and implemented
within Shift and One River EAs

Annual Operating Costs (Estimate)
 Current condition - \$250,000
 Dundas Place Future Condition - \$850,000
 (\$400,000 available in existing budget and forecast)

Programming
Assessment underway by City Staff



Next Steps

Complete Class EA

Detailed Design

Consultation with event organizers and programmers

Construction staging coordination with stakeholders

