

- ESAs

Potential ESAs

Significant Woodlands

Woodlands

Unevaluated Vegetation Patches

Significant Corridors

Unevaluated Corridors

Prov Significant Wetlands

Locally Significant Wetlands

Unevaluated Wetlands

Pot Naturalization Area

Pot Upland Corridor

Ground Water Recharge

Max Hazard Line

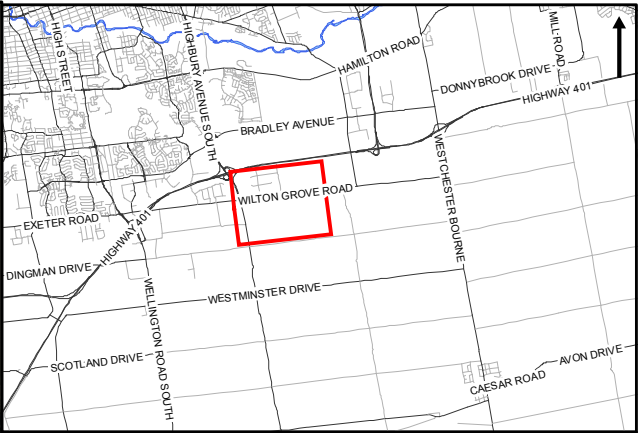
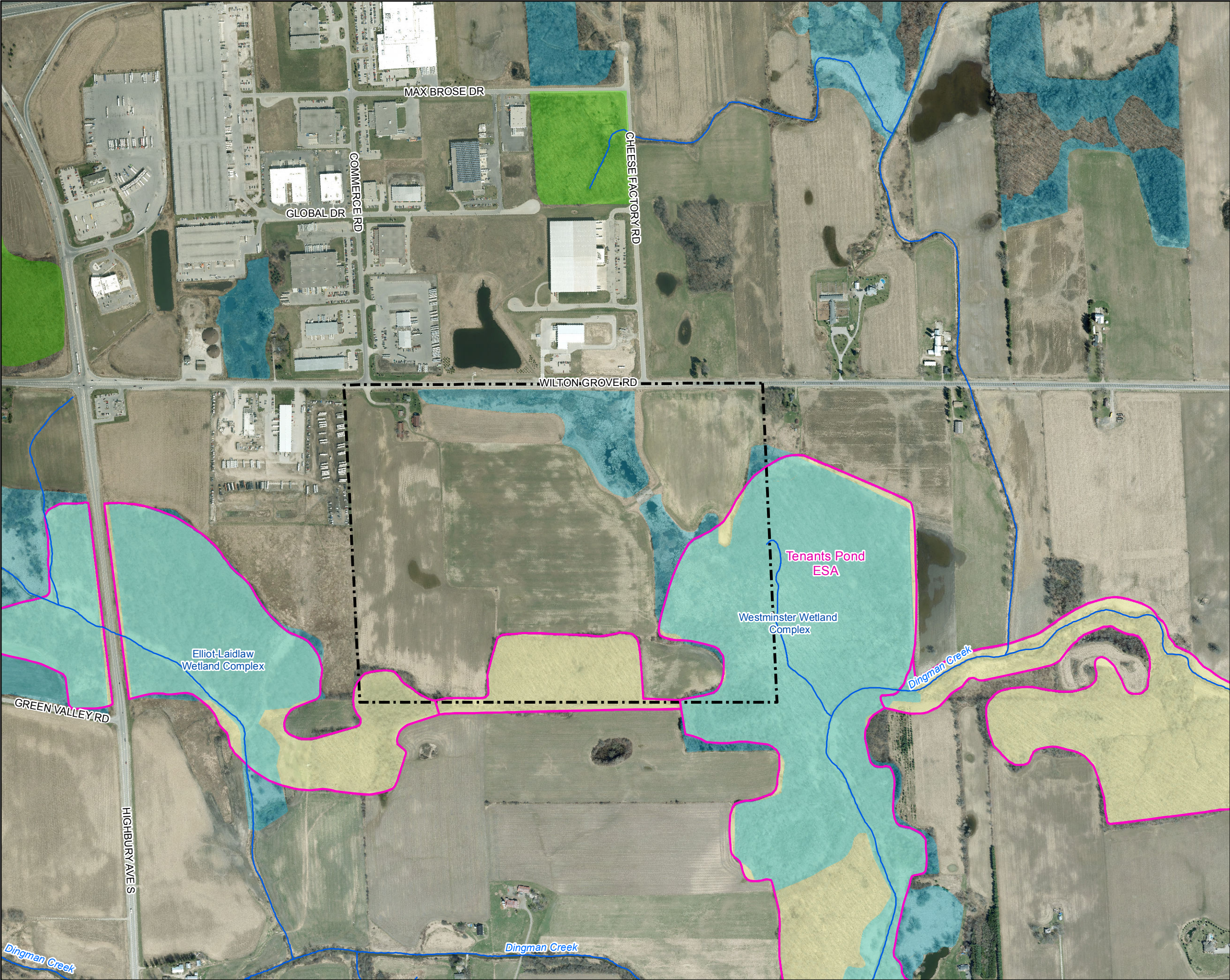
Cons. Authority Bndry

SWS Bndry

Big Picture Meta-Cores and Meta-Corridors
- This map displays various natural heritage features within a specific urban area. The map includes several roads: HWY 401 W, HWY 401 E, HWY 401, WILTON GROVE RD, DINGMAN DR, WESTMINSTER DR, OLD VICTORIA RD, BRADLEY AVE, and VETERANS MEMORIAL PKY. Key features include:

  - TENANTS POND ESA:** A large yellow-shaded area in the center-left, outlined in pink, representing an Ecological Sensitive Area.
  - DINGMAN CREEK:** A blue line representing a waterway flowing from the bottom left towards the center.
  - Wetlands:** Various areas shaded in light blue (Unevaluated Wetlands) and darker blue (Prov Significant Wetlands).
  - Woodlands:** Green-shaded areas, including a large one in the top left and several smaller patches.
  - Corridors:** Brown-shaded areas representing significant corridors.
  - Other Features:** Green triangles indicating potential upland corridors, orange triangles for potential naturalization areas, and red lines for maximum hazard lines.

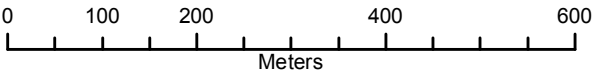




Legend

- Watercourse
- Project Study Area
- Provincially Significant Wetland Evaluated
- Significant Woodlands\*
- Woodlands\*
- ESA\*

Note  
\* Feature delineated based on Schedule B-1 to the City of London's Official Plan - Natural Heritage Features



Baker Lands -  
Subject Lands Status Report

Natural Heritage  
Features & Landscape Context

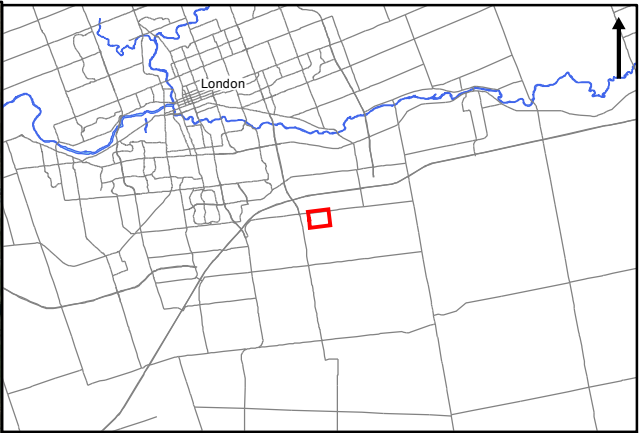
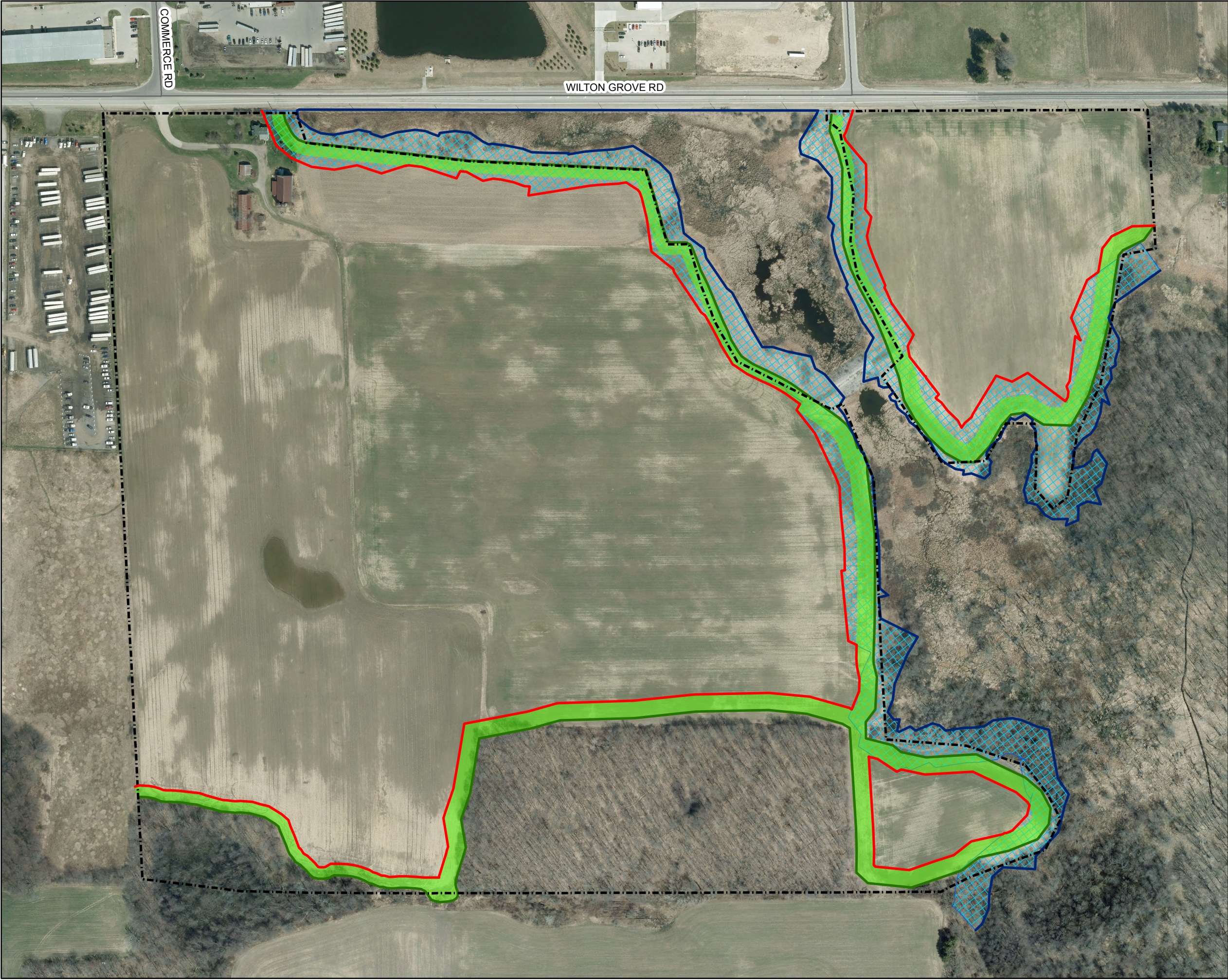
August 2016	1:8,000	Datum: NAD 83, Zone 17 Source: City of London, LIO
P#: 60431821	V#: 002	



Figure 2

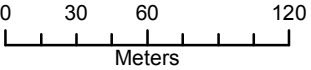
This drawing has been prepared for the use of AECOM's client and may not be used, reproduced or relied upon by third parties, except as agreed by AECOM and its client, as required by law or for use by governmental reviewing agencies. AECOM accepts no responsibility, and denies any liability whatsoever, to any party that modifies this drawing without AECOM's express written consent.






**Legend**

- Preliminary Development Limit
- Wetland Delineation
- ESA Delineation
- Roads
- Property Boundary
- Preliminary ESA Buffer (10-15m)
- Preliminary Wetland Buffer (30m)



**Subject Lands**

**Preliminary Ecological Buffers  
& Development Limits**

July 2015	1:3,200	Datum: NAD 83, Zone 17 Source: ONB
P#: 60431821	V#:	<b>Figure 4</b>
 AECOM Canada Ltd.		

This drawing has been prepared for the use of AECOM's client and may not be used, reproduced or relied upon by third parties, except as agreed by AECOM and its client, as required by law or for use by governmental reviewing agencies. AECOM accepts no responsibility, and denies any liability whatsoever, to any party that modifies this drawing without AECOM's express written consent.

Map Location: P:\60431821 Baker Lands\800-Works\20\_223 (GIS-Graphics)\Design\Ecological\_Buffers.mxd  
Date Saved: 7/2/2015 9:42:30 AM