



# Mud Creek Environmental Assessment Status Update



Presentation to the Civic Works Committee  
October 4, 2016  
Scott Mathers, MPA, P.Eng & Shawna Chambers, P.Eng.  
Stormwater Engineering Division





## The Problem: Frequent Flooding



September 11, 2014

3



## The Problem: Frequent Flooding



September 11, 2014

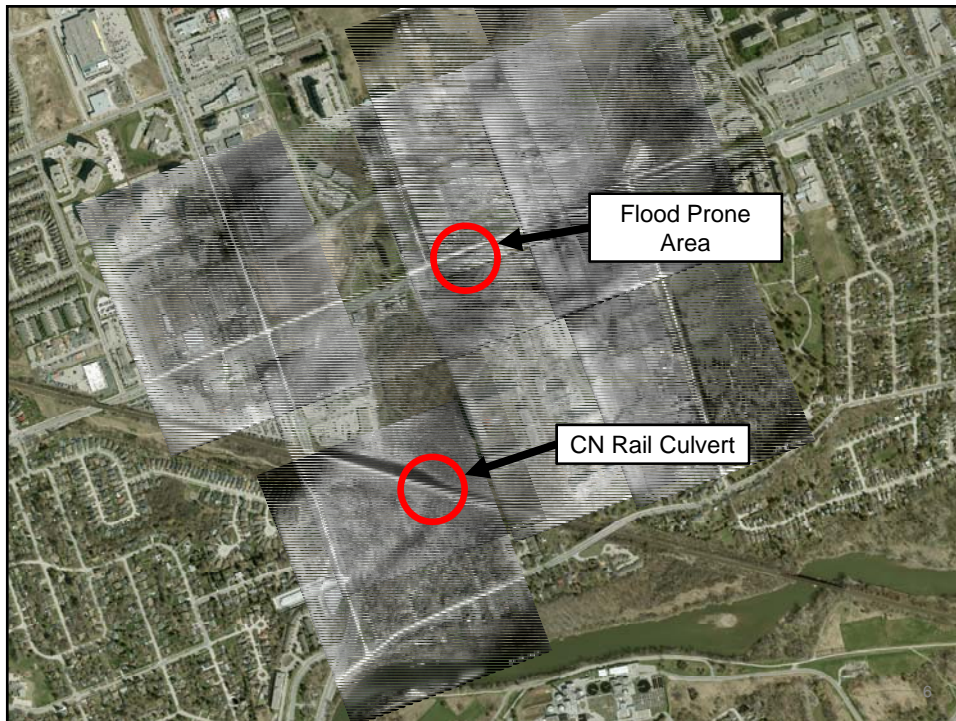
4



# History



5



6



## History of Studies

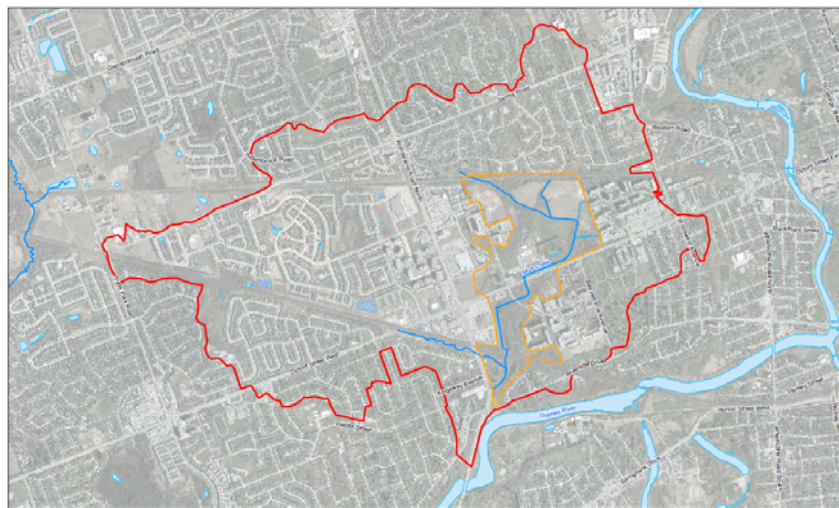
- 1980: Floodline Mapping of Mud Creek
- 1987: Mud Creek Floodline Update Study
- 1995: Medway Creek, Stanton Drain, and Mud Creek Subwatershed Study
- 2008: Draft Municipal Class Environmental Assessment for the Mud Creek Subwatershed
- 2014: Draft Mud Creek Subwatershed Study Update of the Water Resources Components

The 2008 and 2014 studies were never completed but used as background for the current EA Study.

7



## Mud Creek EA Process



8



## EA Problem Statement - Objectives

- To mitigate frequent flooding on public and private lands, especially Oxford Street Rapid Transit Corridor.
- To rehabilitate sections of Mud Creek, improving aquatic and terrestrial habitat
- To provide mitigation and compensation per Official Plan Policy 15.3.3.



9

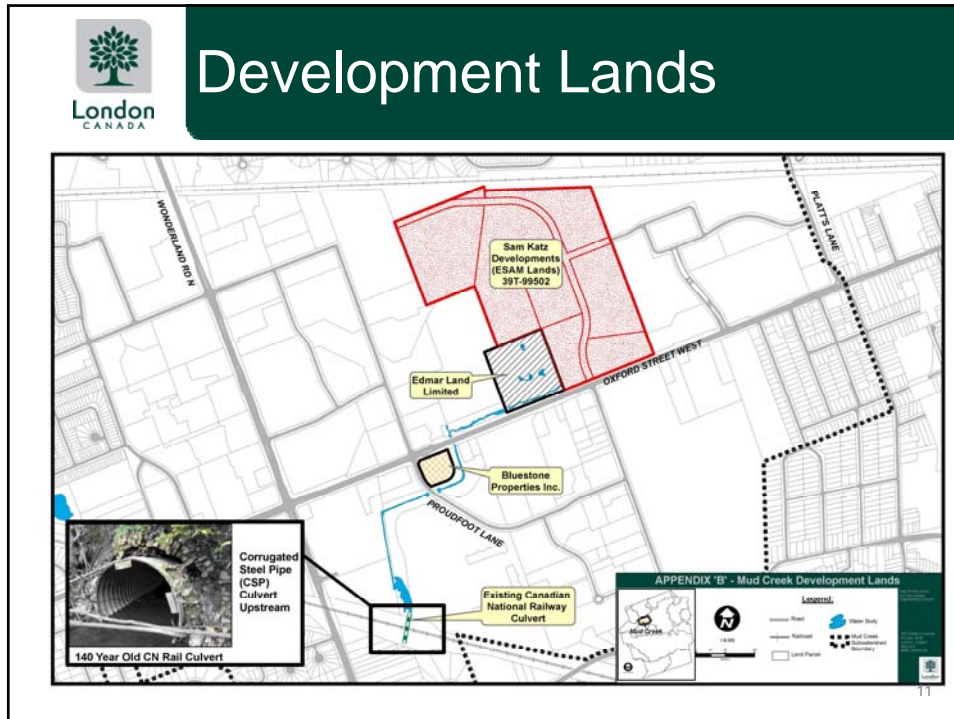


## Public Engagement

- Two public meetings on November 20, 2014 and April 23, 2015 at St. Aidan's Church
- Two site walks of Mud Creek with homeowners downstream of CN Rail in August 2015
- Multiple meetings and shared communications with landowners with development interests in collaboration with the UTRCA



10



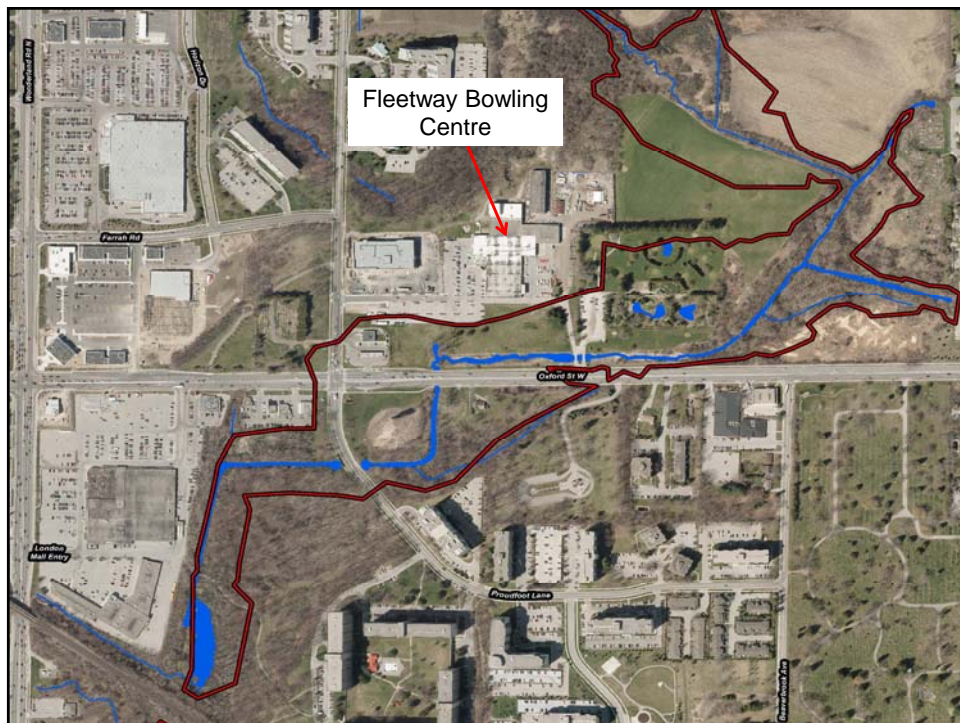
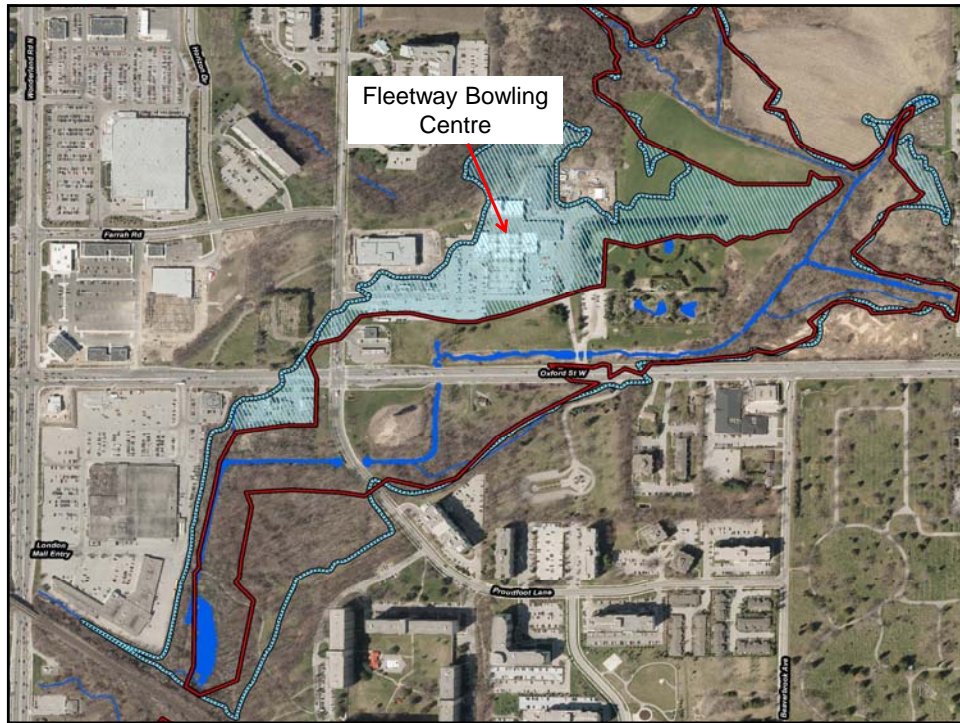
**Extreme Flooding: Regulatory Floodplain**


London CANADA

- Extreme flooding impacts development limits.
- November 3, 2015 Civic Works Committee requested assignment to complete floodplain modelling.
- The City's consultant completed the modelling for the UTRCA to expedite the process.

Schematic of Hydrologic Modelling

12





## Draft EA/EIS Circulation


- In July 2016, the City distributed draft EA/EIS to UTRCA, EEPAC, and landowners of flood-impacted lands
- Significant number of technically complex comments received
- Today's report requests additional funding of \$150,000 to address the comments and adjust the hydraulic modelling to evaluate expanding the culverts at Oxford Street West and Proudfoot Lane

DRAFT REPORT


Mud Creek Subwatershed  
Class Environmental Assessment

Prepared for  
City of London


July 2016



CH2M HILL, Canada Limited  
72 Victoria Street South, Suite 300  
Richmond, ON N2G 4P9



15



## Next Steps: Three Processes

Mud Creek  
EA

- Led by Stormwater Engineering Division

Development  
Approvals

- Led by Development Services Division with support by the Planning Department

Floodplain  
Regulation

- Mandate of the Upper Thames River Conservation Authority (UTRCA) based on guidelines provided by the Province

16




 **Next Steps:  
Mud Creek EA Process**

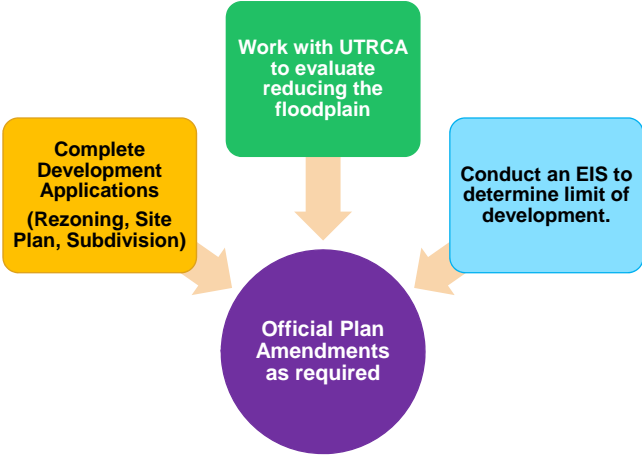
Consultant to address comments → Present Final EA to EEPAC and CWC in Q2 2017 → 30-day Public Review of EA → Detailed Design to commence



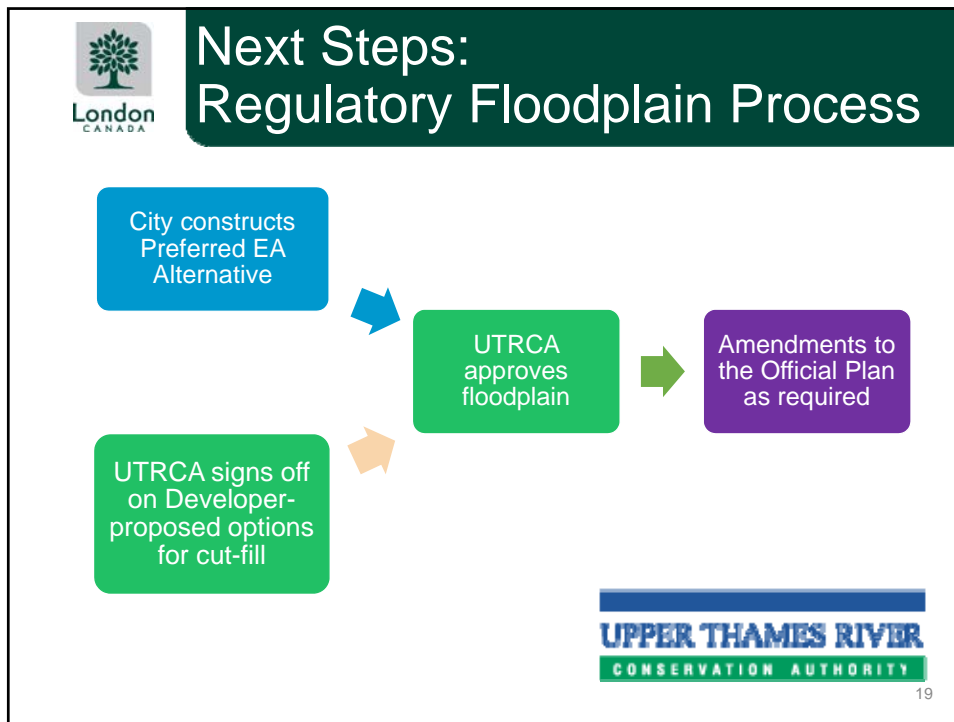
17

 **Next Steps:  
Development Approvals Process**

Each developer to:



18



**Esam Lands**

- September 30<sup>th</sup> meeting with Engineering, Planning, Development Services and Esam Land’s representatives.
- City agreed to recognize the proposed stormwater infrastructure for the Esam Lands in the Mud Creek EA.
- These works will be designed and constructed by the developer.

TMIG

TMIG

20



## Conclusions

- Mud Creek EA is a complex study that is nearing completion.
- Final report, including edits and development proposal will be presented to EEPAC.
- The Notice of Completion for the Mud Creek EA is expected to be submitted to CWC in Q2 2017.
- Development applications can advance in parallel with the construction of the preferred EA works.



21