



CAMDEN TERRACE

Architectural Conservancy Ontario - London Region

Delegation to the
Planning and Environment Committee
September 6, 2016



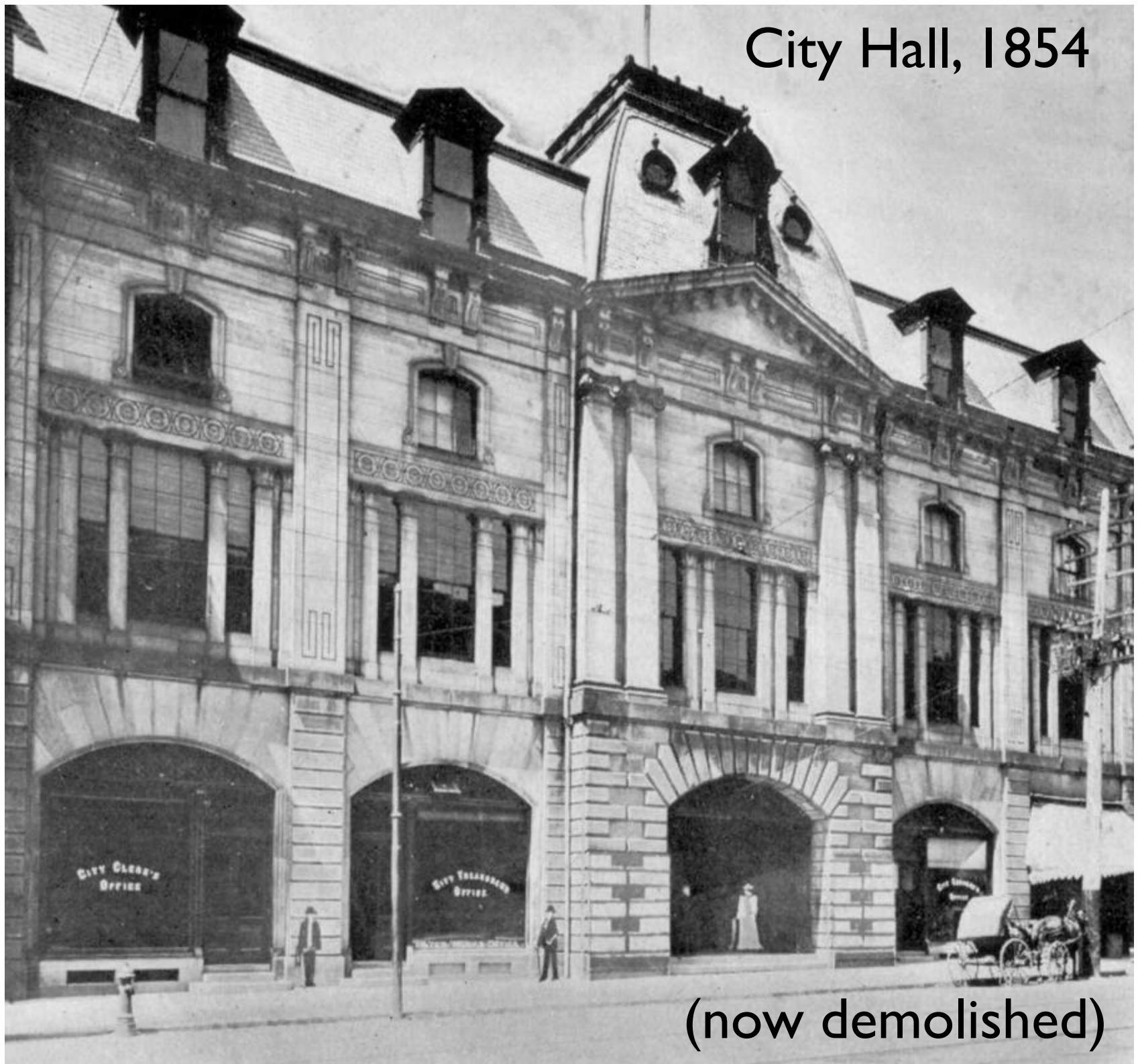
CAMDEN TERRACE

The Importance of Samuel Peters and Camden Terrace

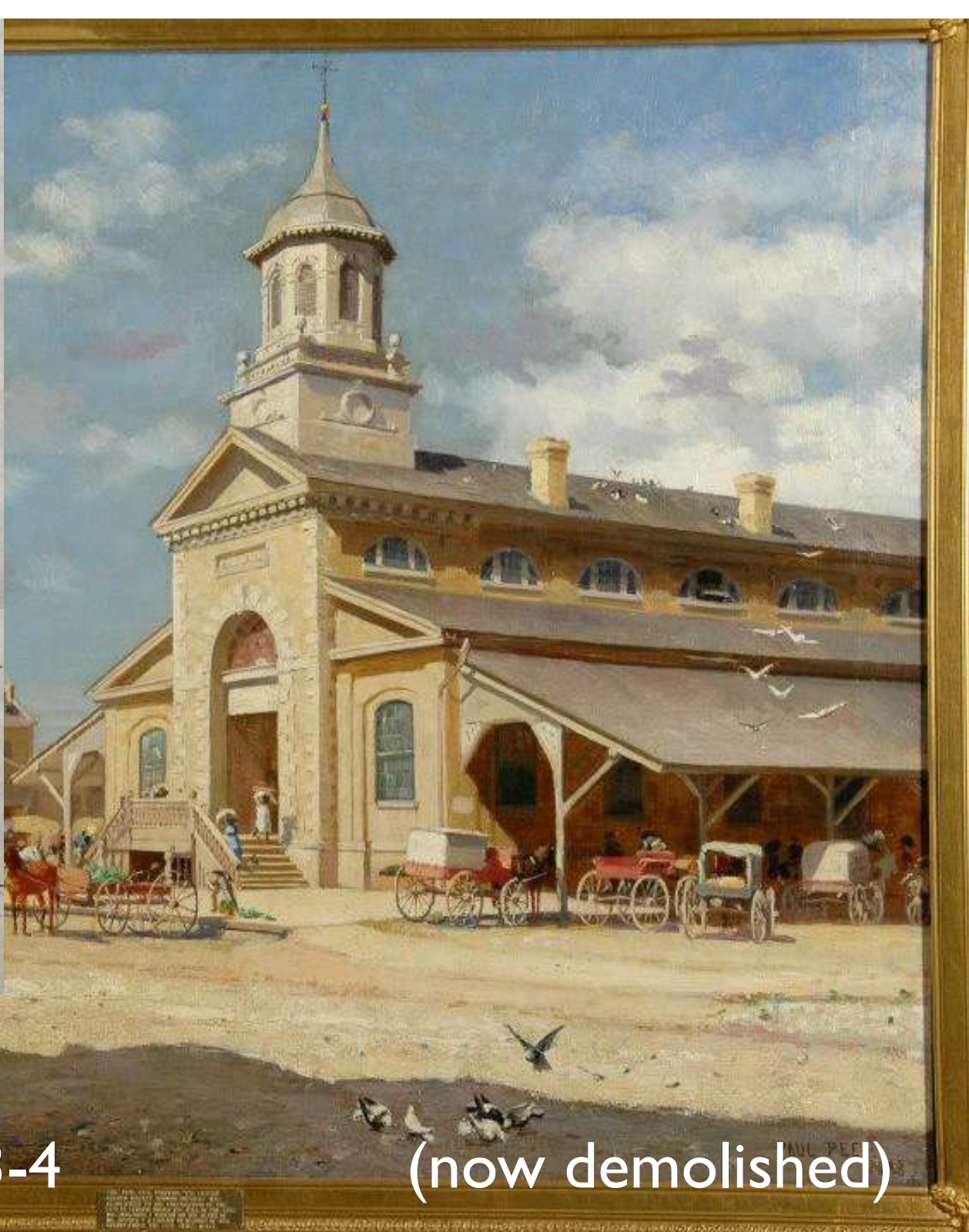
Janet Huntten
Mark Tovey



City Hall, 1854



(now demolished)



Market Building, 1853-4

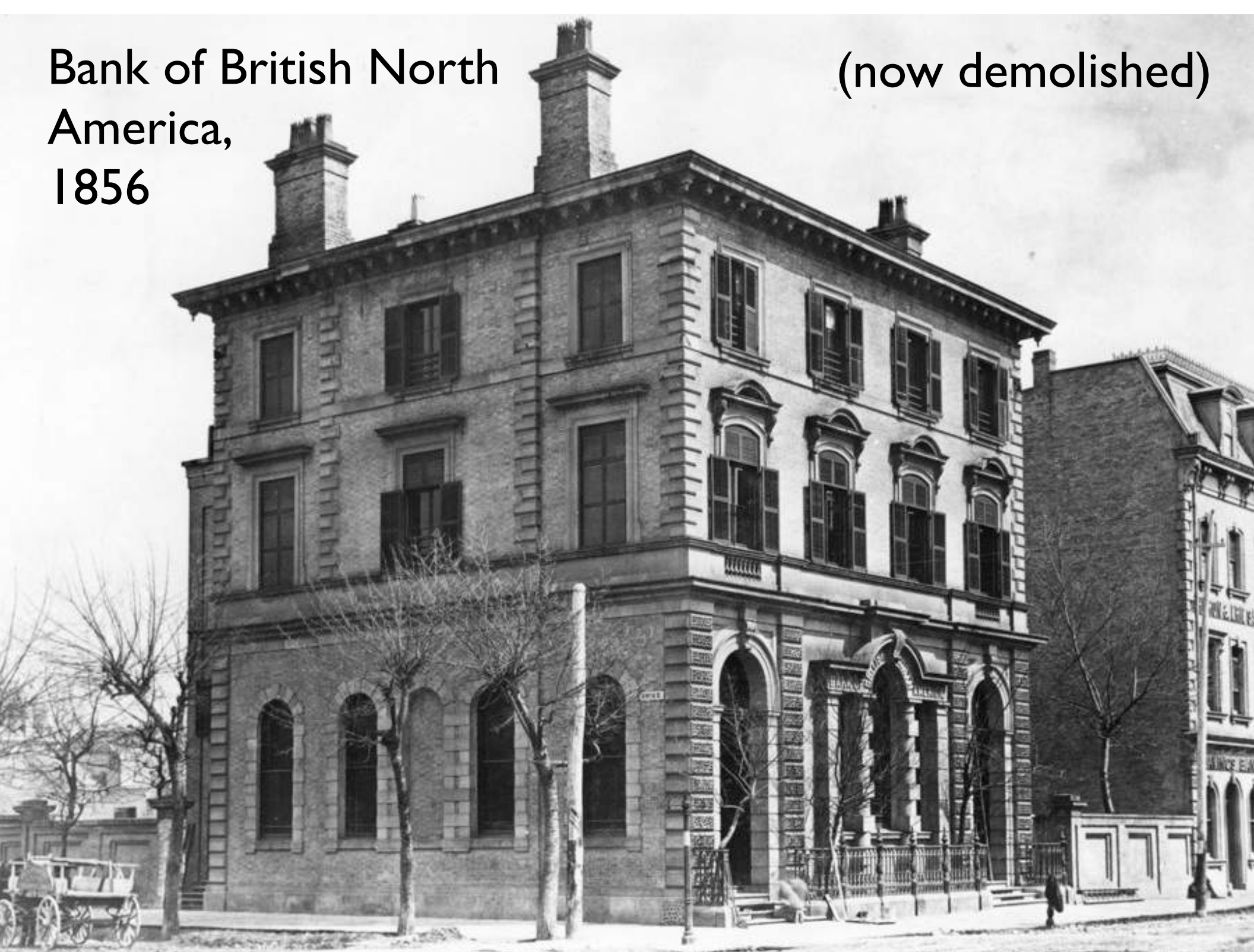
(now demolished)



Grosvenor Lodge, 1853

Bank of British North
America,
1856

(now demolished)



City Hotel, 1860

(now demolished)



Elliston, 1862

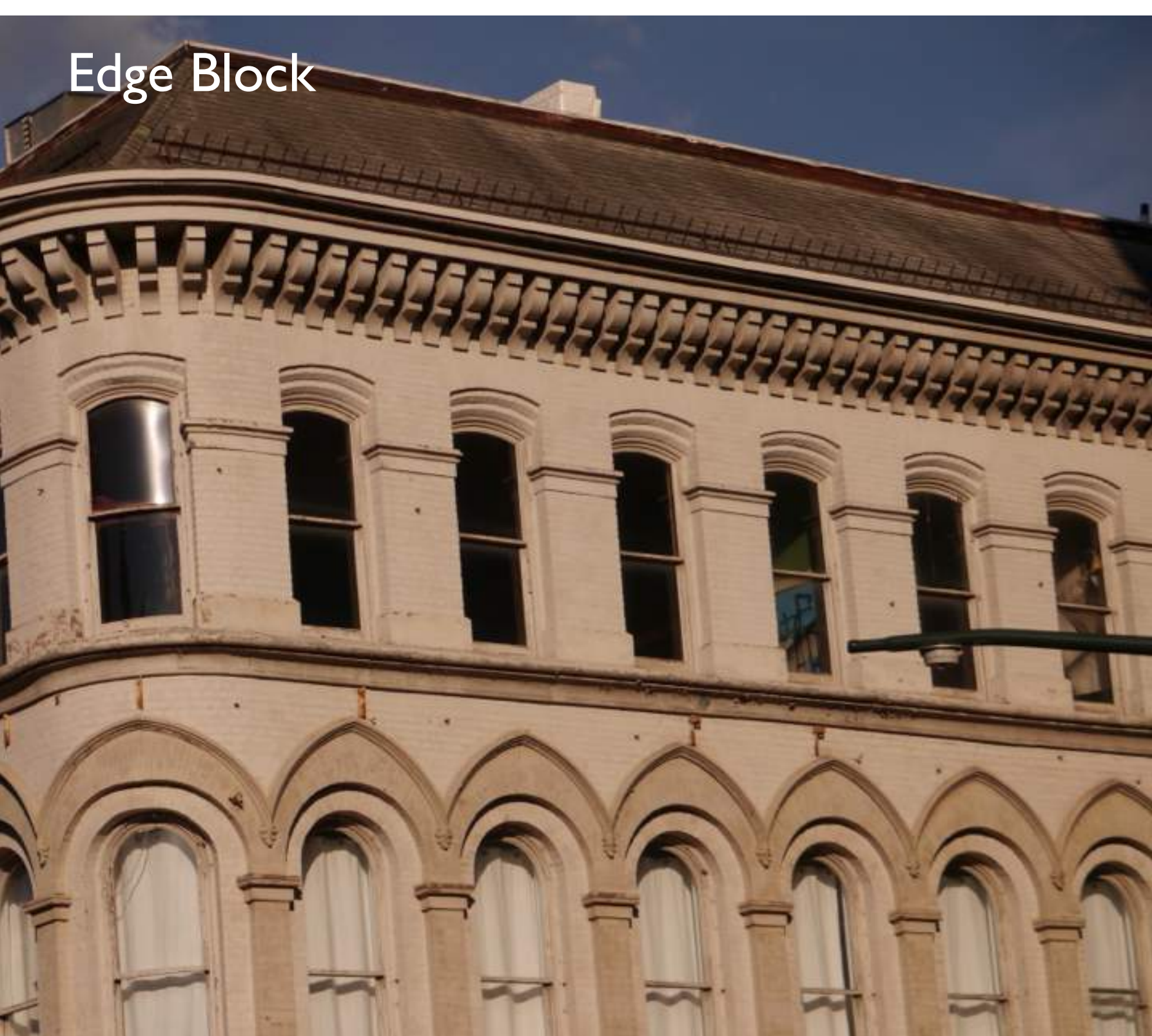
(now demolished)



Edge Block, 1875



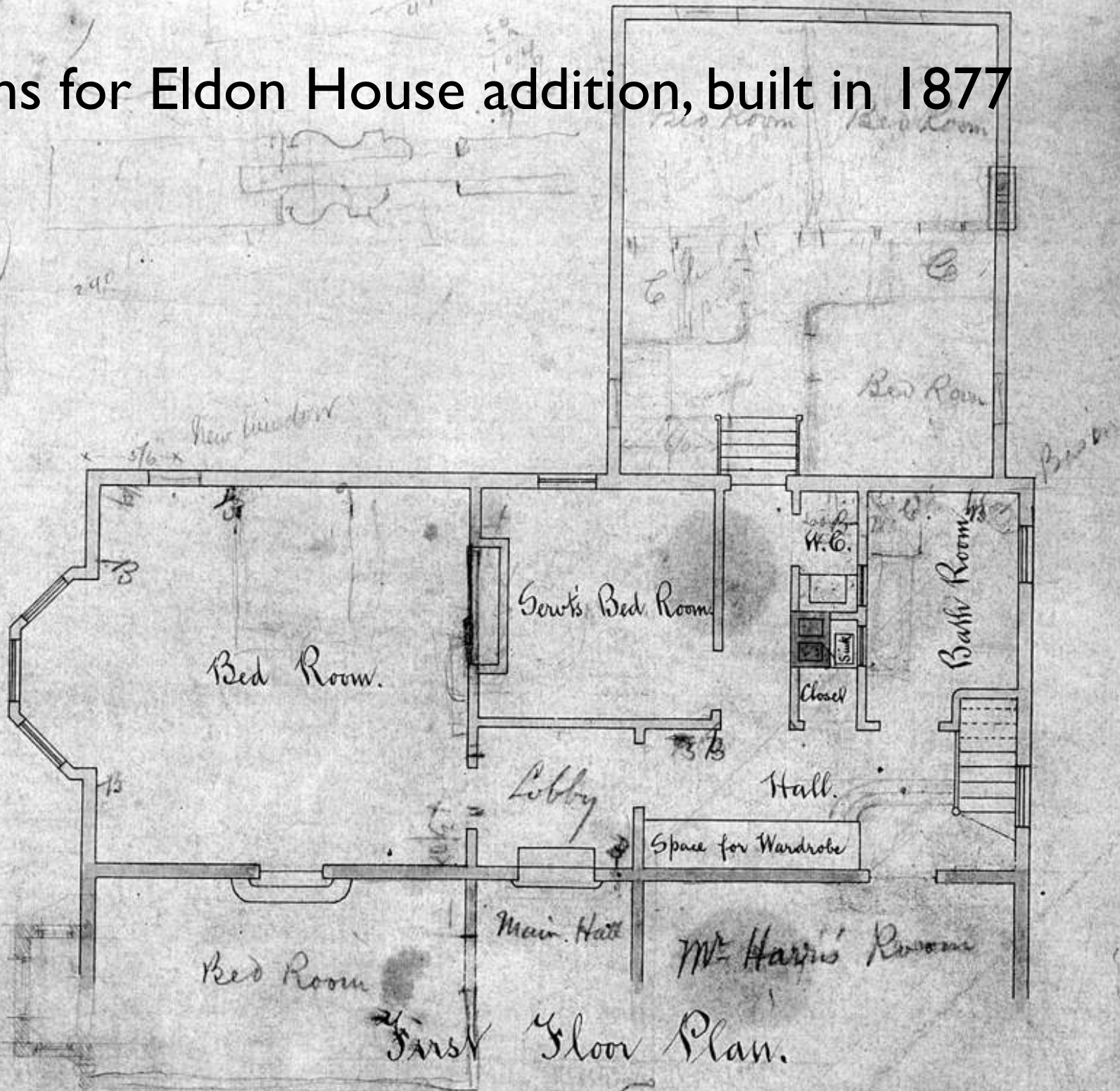
Edge Block



Plans for Eldon House addition, built in 1877

Summer Kitchen.

20
30
30
135
160



Eldon House addition

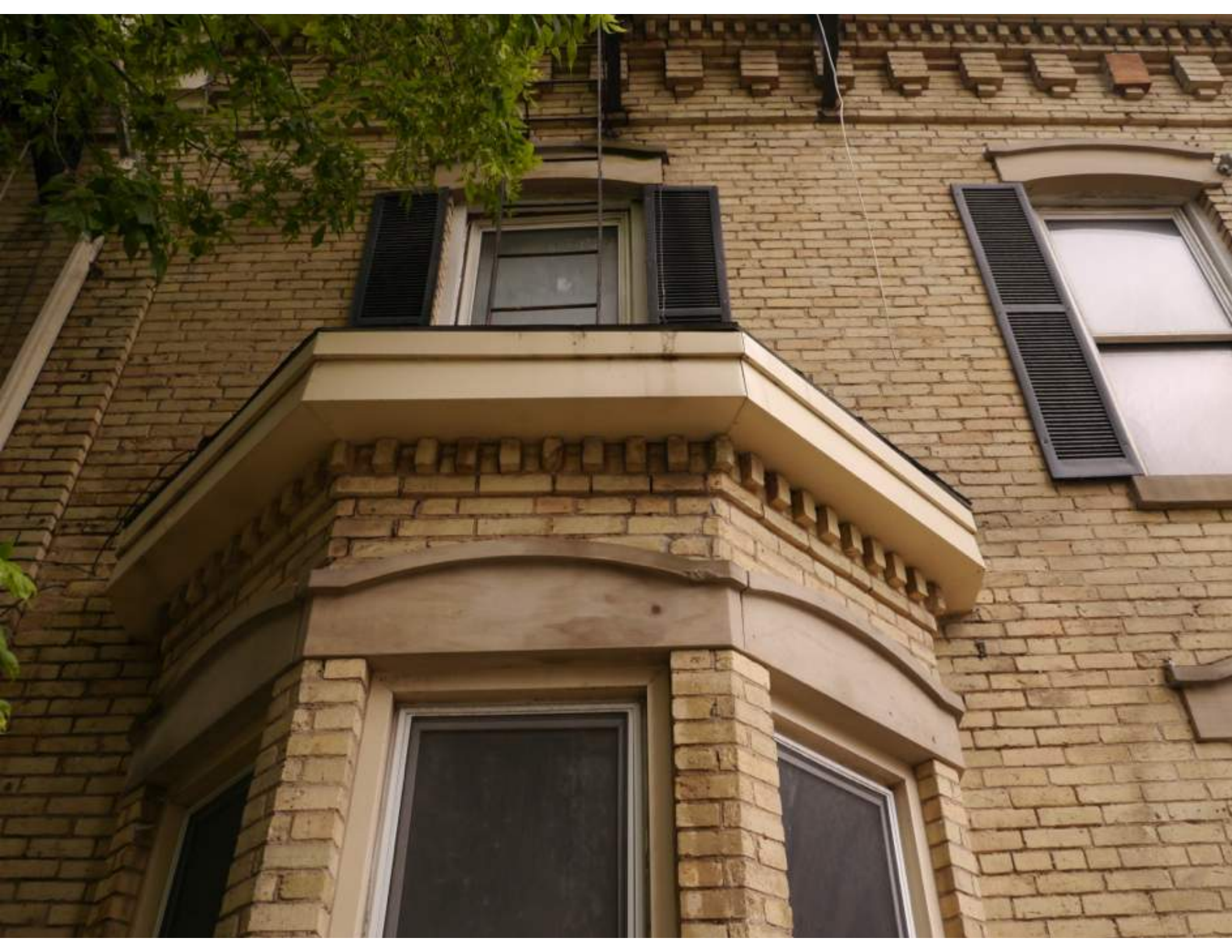


93 Dufferin St.

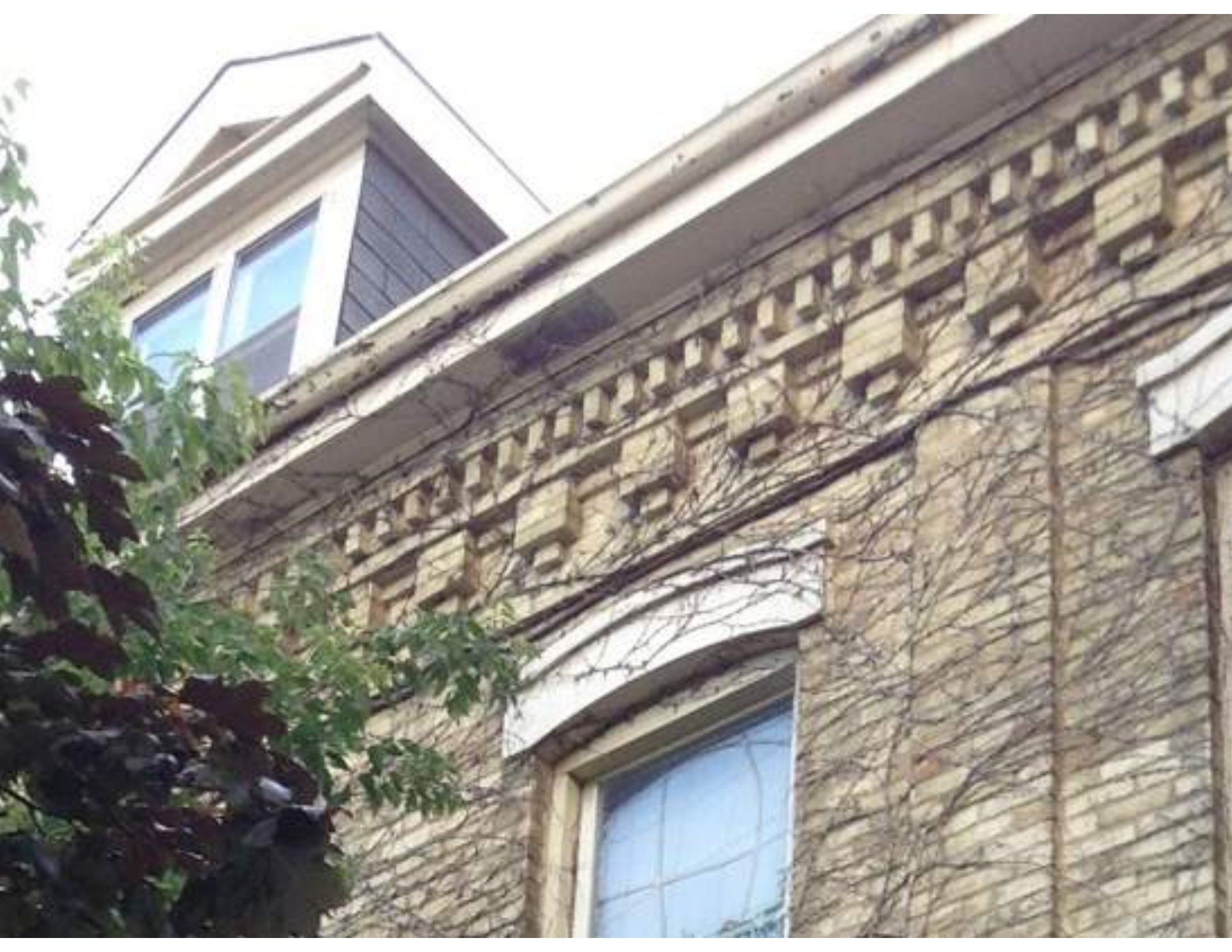




**GAMDEN
TERRACE**









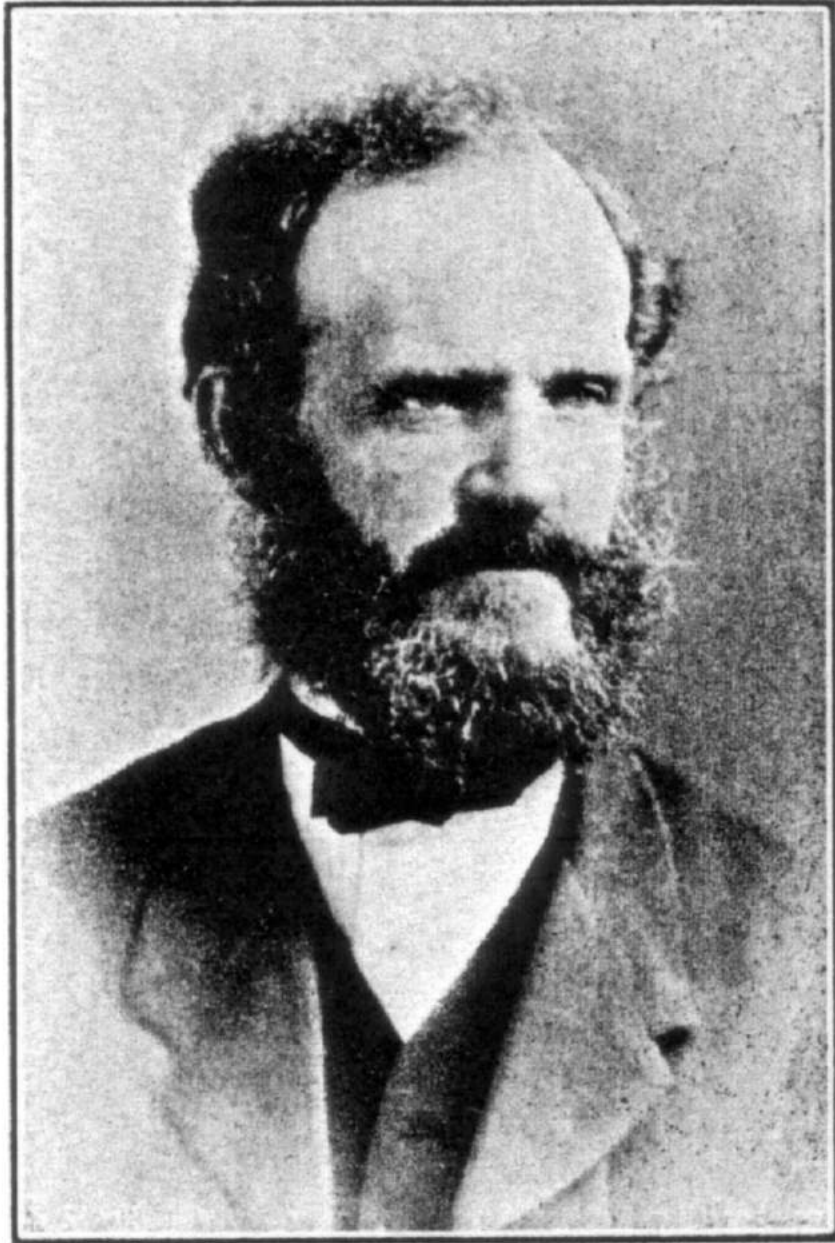
LAW
OFFICE

479
J. MURRAY HELSON
MURRAY & HELSON
WILLIAM L. DENAR
DENAR & HELSON

481
WILLIAM L. DENAR
MURRAY & HELSON
WILLIAM L. DENAR
DENAR & HELSON

PRE-ARRANGED
**TENANT
PARKING ONLY!**
ALL OTHERS WILL BE TOWED
OR STICKERED AT OWNERS EXPENSE







CAMDEN TERRACE

The Future Potential of Camden Terrace

Sandra Miller



LAW
OFFICE

479
J. MURRAY HELSON
MURRAY & HELSON
WILLIAM L. DENAR
MURRAY & HELSON

481
WILLIAM L. DENAR
MURRAY & HELSON
WILLIAM L. DENAR
MURRAY & HELSON

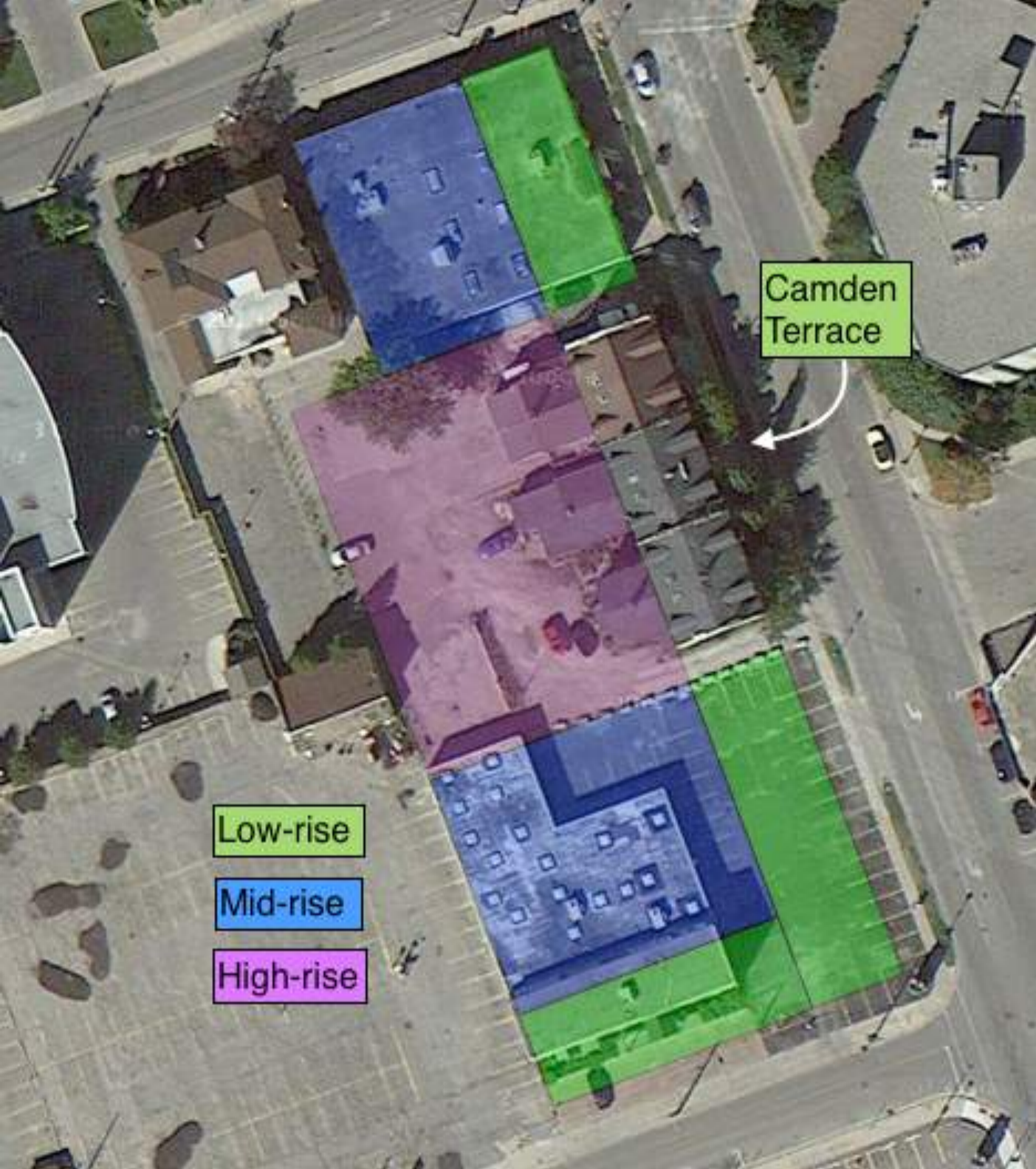
PRE-ARRANGED
**TENANT
PARKING ONLY!**
ALL OTHERS WILL BE TOWED
OR STICKERED AT OWNERS EXPENSE











Camden
Terrace

Low-rise

Mid-rise

High-rise



Photo sources include: London and Its Men of Affairs (1916), Ivey London Room, London Public Library, Museum London, Eldon House, Canada's Historic Places, Reflections on London's Past (1975), Megan Arnott, Pat Coles, Lois Marshall, Sandra Miller, Mark Tovey, Downtown London: Layers of Time (2000)