

CITY OF LONDON  
TREE PROTECTION BY-LAW

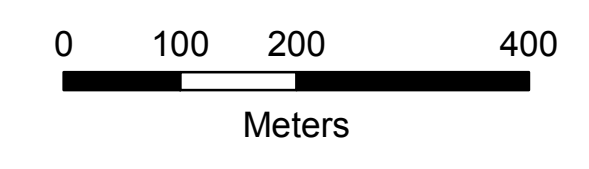
SCHEDULE D

as of August 30, 2016

 Tree Protection Area

KEY MAP  
D-12

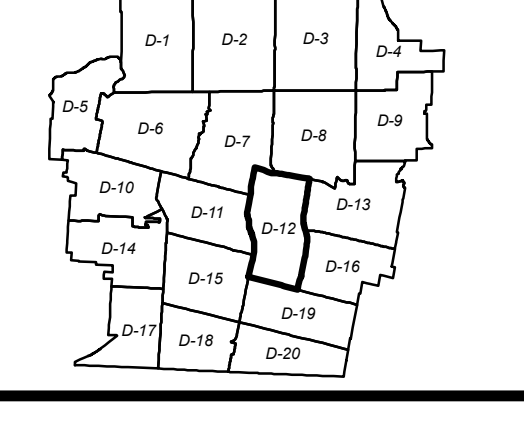
1:6,500



DISCLAIMER

The City of London Tree Protection By-Law Maps and related information are made available for information only. The City of London does not warrant that this information is the most current version or that there are no errors or omissions contained herein. The City of London accepts no responsibility for damages, if any, suffered by any person as a result of decisions made or actions based on this information and any person undertaking work based on this information assumes all risk in connection therewith and any damages done or occasioned shall be at the sole risk and expense of that person. Readers of this information should verify it with the City's Planning Services before acting on it. No permission is given for distribution of the Tree Protection By-Law maps or related information for commercial purposes. This information may be used for other purposes only if the user of this information repeats this disclaimer and the notice of copyright.

COPYRIGHT 2016



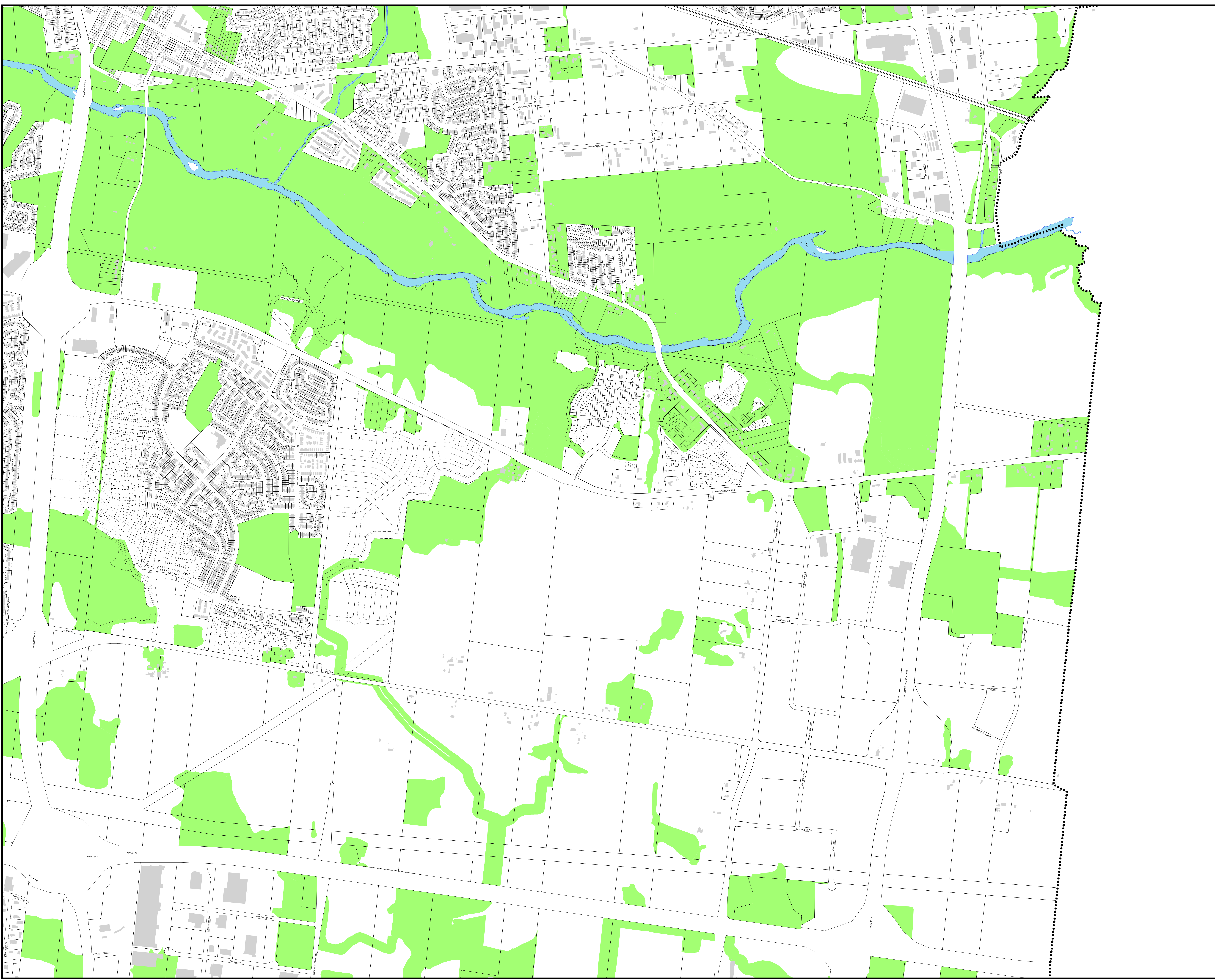
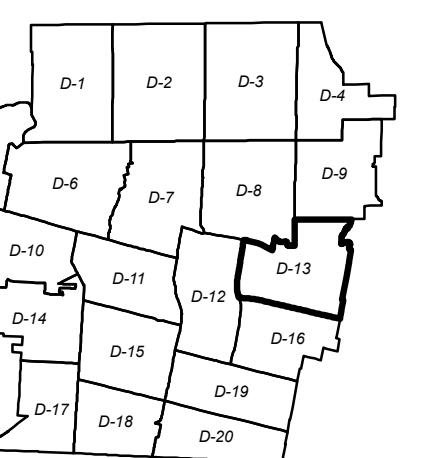
Tree Protection Area

KEY MAP  
D-13



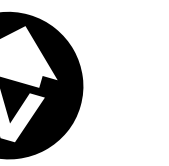
0 50 100 200  
Meters

**DISCLAIMER:**  
The City of London Tree Protection By-Law Maps and related information are made available for information only. The City of London assumes no responsibility for damages, injury, suffered by any person as a result of decisions made or actions based on this information. Any person undertaking work based on the information assumes all risk, in connection therewith and any damages done or occasioned shall be the responsibility of the person undertaking the work. The City of London is not liable for any damages done or occasioned as a result of this information. This information may be used for other purposes only if the user of this information accepts the disclaimer and the source of copyright.  
COPYRIGHT © 2016



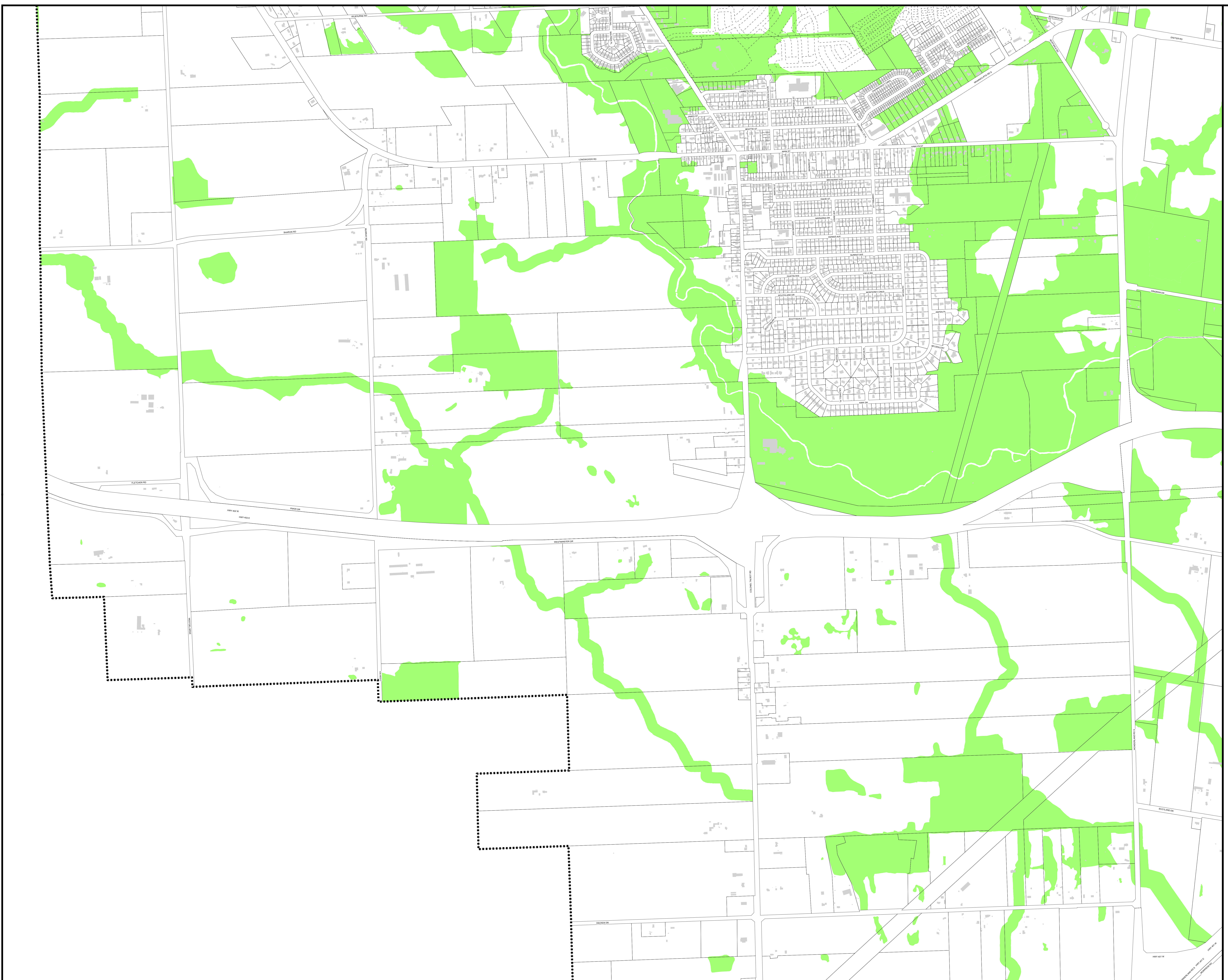
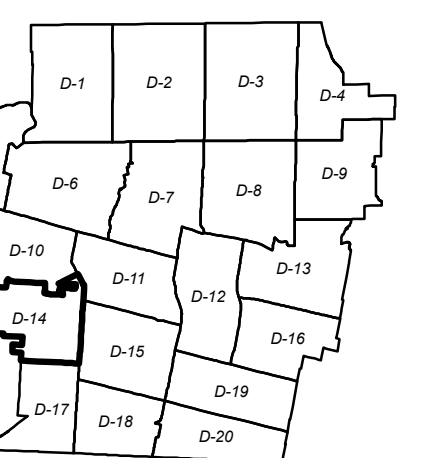
Tree Protection Area

KEY MAP  
D-14



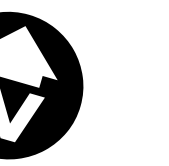
0 50 100 200  
Meters

**DISCLAIMER:**  
The City of London Tree Protection By-Law Maps and related information are made available for information only. The City of London assumes no responsibility for damages, injury, suffered by any person as a result of decisions made or actions based on this information. Any person undertaking work based on the information assumes all risk, in connection therewith and any damages done or occasioned shall be the responsibility of that person. The City of London does not warrant the accuracy of the information. No person shall be liable for damages or compensation of any kind for any loss or damage caused by the use of this information. The information is provided for informational purposes only. The information is not intended to be used for any other purpose and the user of this information accepts the disclaimer and the user of copyright. COPYRIGHT © 2016



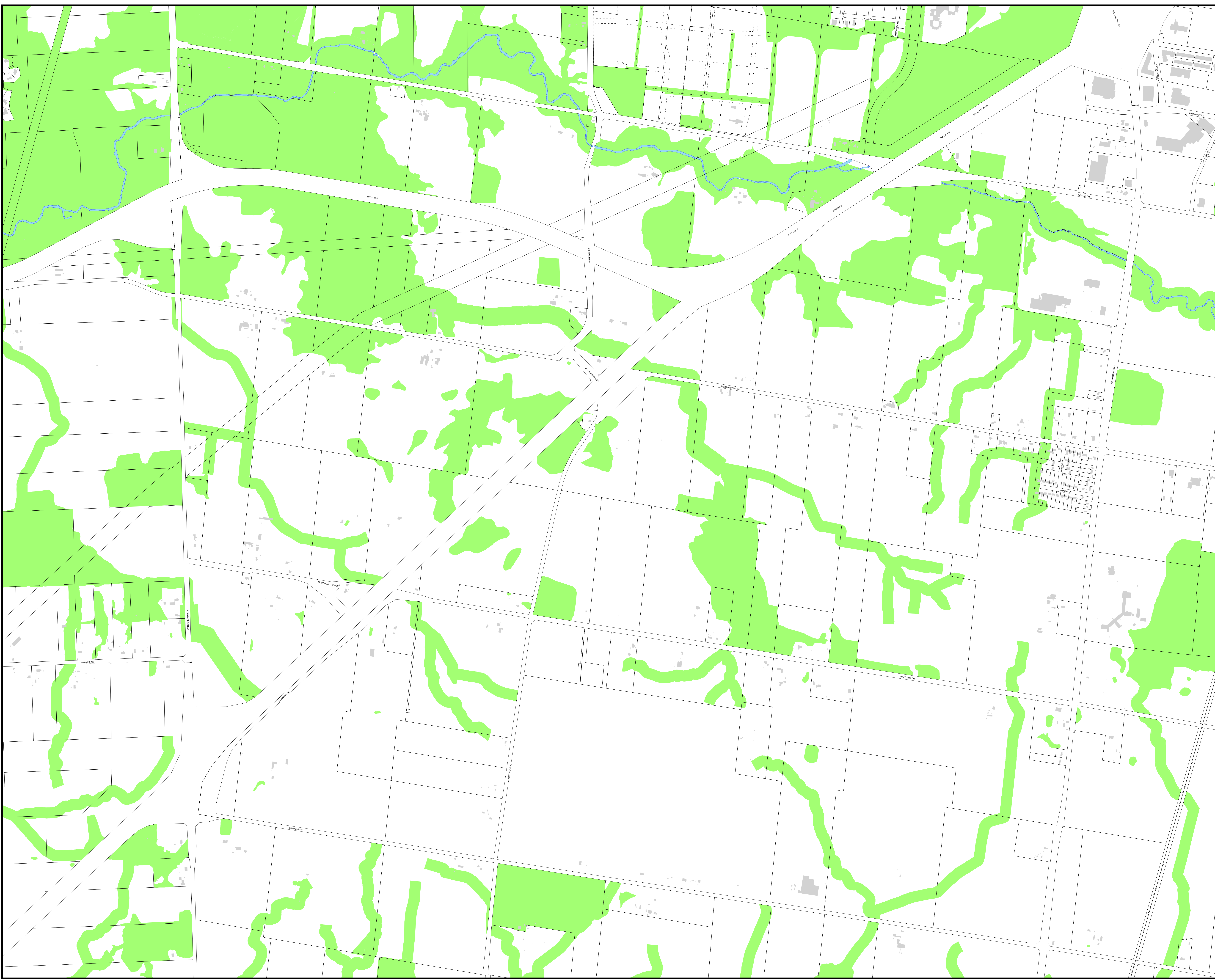
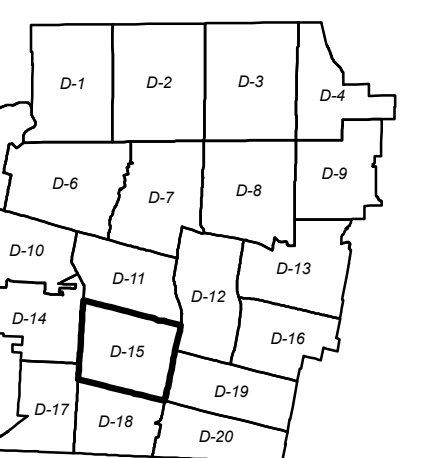
Tree Protection Area

KEY MAP  
D-15



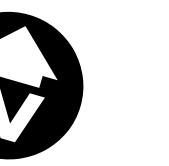
0 50 100 200  
Meters

**DISCLAIMER:**  
The City of London Tree Protection By-Law Maps and related information are made available for information only. The City of London assumes no responsibility for damages, injury, suffered by any person as a result of decisions made or actions based on this information. Any person undertaking work based on this information assumes all risk, in connection therewith and any damages done or occasioned shall be the responsibility of such person. The City of London does not warrant the accuracy of this information for commercial purposes. This information may be used for other purposes only if the user of this information accepts the disclaimer and the notice of copyright.  
COPYRIGHT 2016



Tree Protection Area

KEY MAP  
D-16



0 50 100 200  
Meters

**DISCLAIMER:**  
The City of London Tree Protection By-Law Maps and related information are made available for information only. The City of London assumes no responsibility for damages, injury, suffered by any person as a result of decisions made or actions based on this information. Any person undertaking work based on this information assumes all risk, in connection therewith and any damages done or occasioned shall be the responsibility of such person. The City of London does not warrant the accuracy of this information. The City of London is not liable for any damages or losses of any kind, including but not limited to, direct, indirect, special, incidental, or consequential damages, arising out of the use of this information. The information is provided for informational purposes only. The information is not intended to be used for any other purpose. The City of London reserves the right to change the information at any time without notice.

