

CITY OF LONDON
TREE PROTECTION BY-LAW

SCHEDULE D

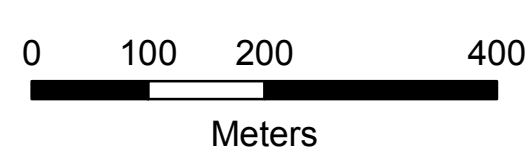
as of August 30, 2016

 Tree Protection Area

KEY MAP

D-7

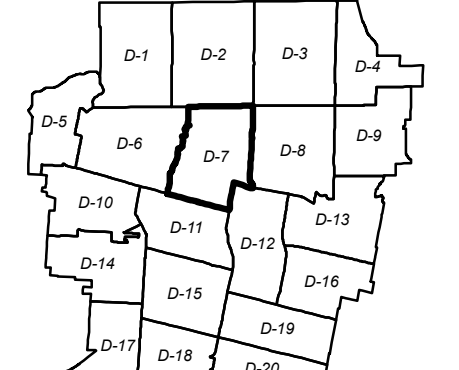
1:6,500

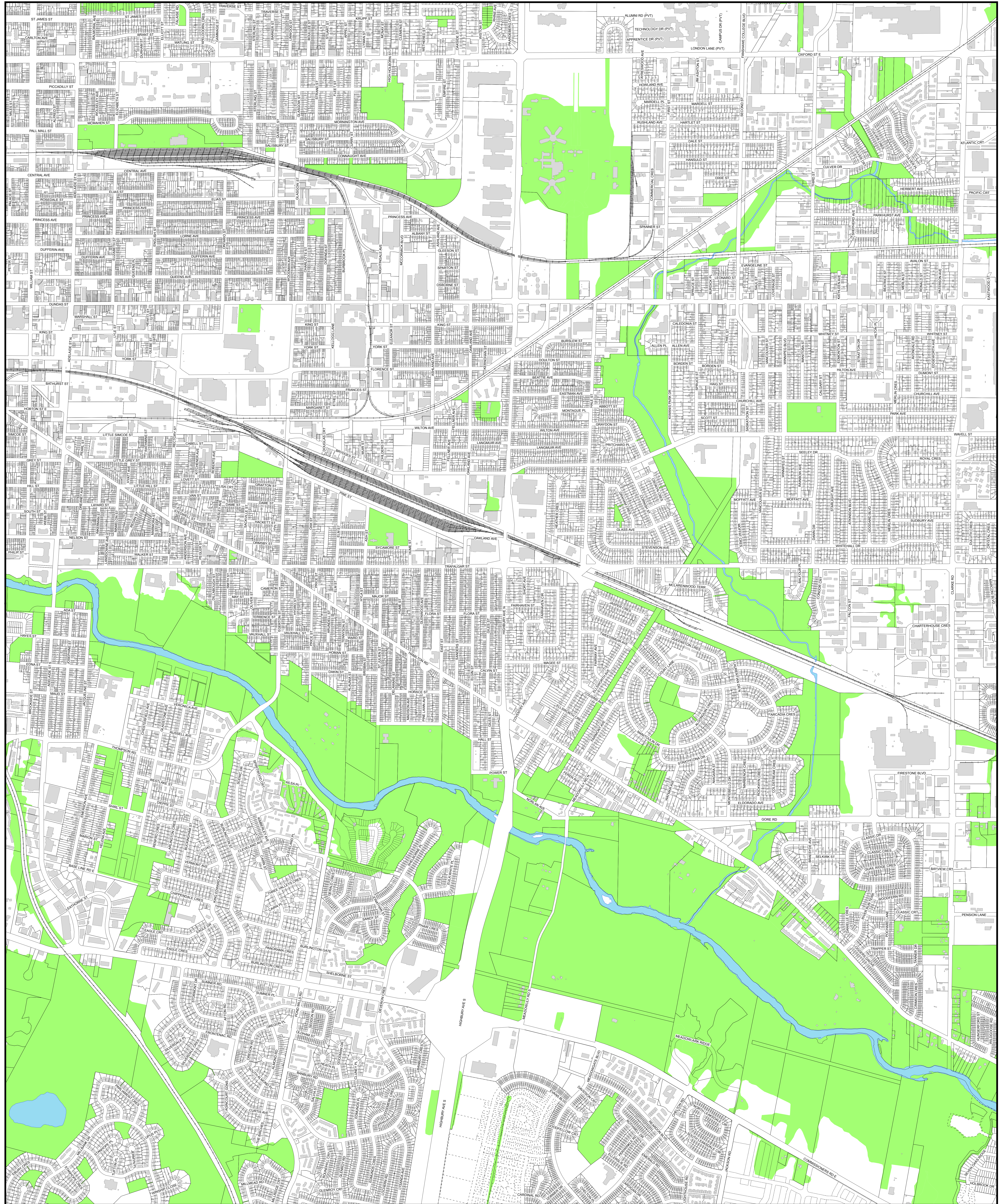


DISCLAIMER

The City of London Tree Protection By-Law Maps and related information are made available for information only. The City of London does not warrant that this information is the most current version or that there are no errors or omissions contained herein. The City of London accepts no responsibility for damages, if any, suffered by any person as a result of decisions made or actions based on this information and any person undertaking work based on this information. Any person undertaking work based on this information assumes all risk in connection therewith and any damages done or occasioned shall be at the user's risk and expense of that person. Readers of this information should verify it with the City's Planning Services before acting on it. No permission is given for distribution of the Tree Protection By-Law maps or related information for commercial purposes. This information may be used for other purposes only if the user of this information repeats this disclaimer and the notice of copyright.

COPYRIGHT 2016





CITY OF LONDON
TREE PROTECTION BY-LAW

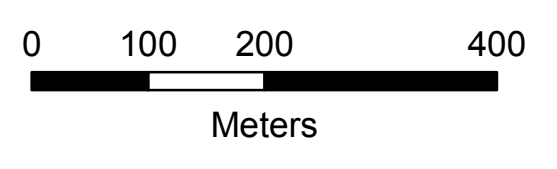
SCHEDULE D

as of August 30, 2016

 Tree Protection Area

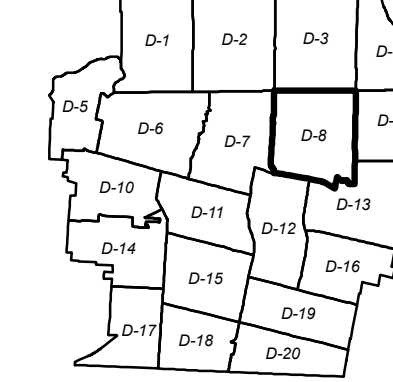
KEY MAP
D-8

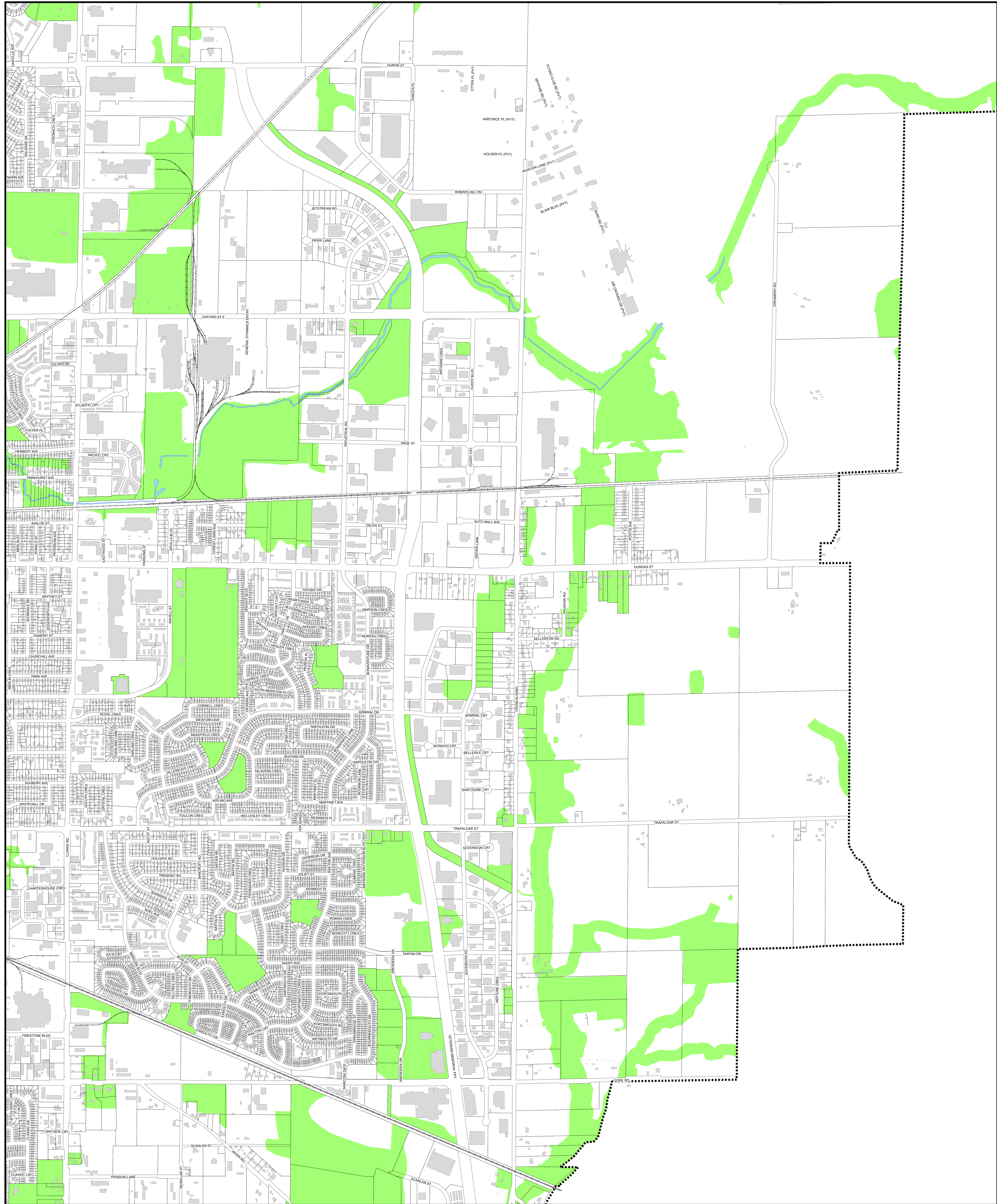
1:6,500



DISCLAIMER
The City of London Tree Protection By-Law Maps and related information are made available for information only. The City of London does not warrant that this information is the most current version or that there are no errors or omissions contained herein. The City of London accepts no responsibility for damages, if any, suffered by any person as a result of decisions made or actions based on this information and any person undertaking work based on this information. Any person undertaking work based on this information assumes all risk in connection therewith and any damages done or occasioned shall be at the user's risk and expense of that person. Readers of this information should verify it with the City's Planning Services before acting on it. No permission is given for distribution of this Tree Protection By-Law map or related information for commercial purposes. This information may be used for other purposes only if the user of this information repeats this disclaimer and the notice of copyright.

COPYRIGHT 2016





CITY OF LONDON
TREE PROTECTION BY-LAW

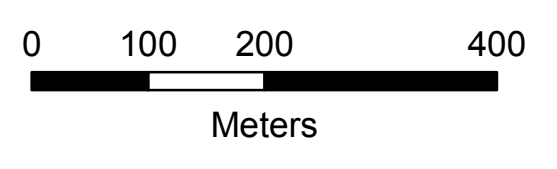
SCHEDULE D

as of August 30, 2016

 Tree Protection Area

KEY MAP
D-9

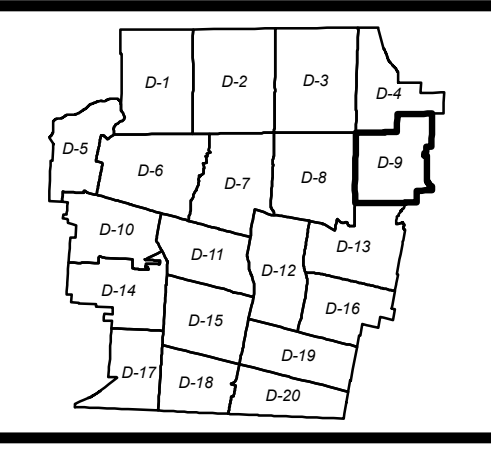
1:6,500



DISCLAIMER

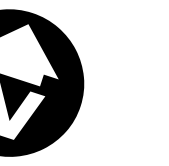
The City of London Tree Protection By-Law Maps and related information are made available for information only. The City of London does not warrant that this information is the most current version or that there are no errors or omissions contained herein. The City of London accepts no responsibility for damages, if any, suffered by any person as a result of decisions made or actions based on this information and any person undertaking work based on this information. Any person undertaking work based on this information assumes all risk in connection therewith and any damages done or occasioned shall be at the sole risk and expense of that person. Readers of this information should verify it with the City's Planning Services before acting on it. No permission is given for distribution of the Tree Protection By-Law maps or related information for commercial purposes. This information may be used for other purposes only if the user of this information repeats this disclaimer and the notice of copyright.

COPYRIGHT 2016



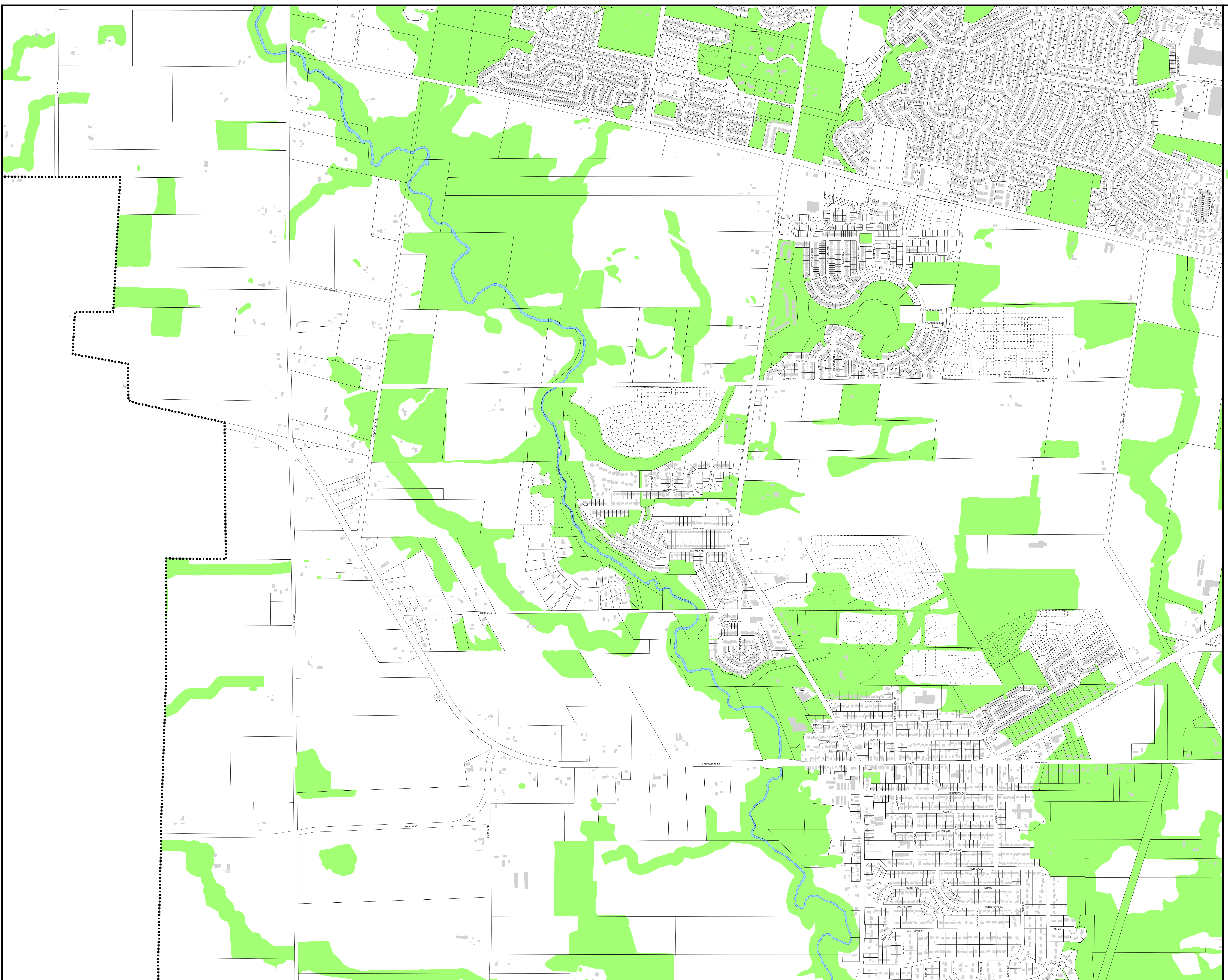
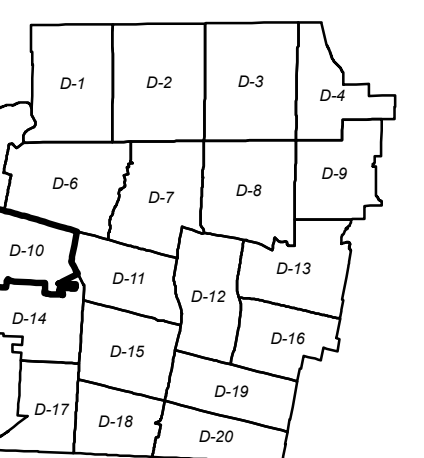
Tree Protection Area

KEY MAP
D-10



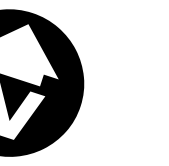
0 50 100 200
Meters

DISCLAIMER:
The City of London Tree Protection By-Law Maps and related information are made available for information only. The City of London assumes no responsibility for damages, injury, suffered by any person as a result of decisions made or actions based on this information. Any person undertaking work based on the information assumes all risk, in connection therewith and any damages done or occasioned shall be the responsibility of that person. The City of London is not liable for any damages done or occasioned by the use of this information. The information may be used for other purposes only if the user of this information accepts the disclaimer and the terms of copyright.
COPYRIGHT 2016



Tree Protection Area

KEY MAP
D-11



0 50 100 200
Meters

DISCLAIMER:
The City of London Tree Protection By-Law Maps and related information are made available for information only. The City of London assumes no responsibility for damages, injury, suffered by any person as a result of decisions made or actions based on this information. Any person undertaking work based on the information assumes all risk, correction, omissions and any damages done or occurrence that be. No person should rely on this information without consulting a professional. The information may be used for other purposes only if the user of this information accepts the disclaimer and the scope of copyright.
COPYRIGHT 2016

