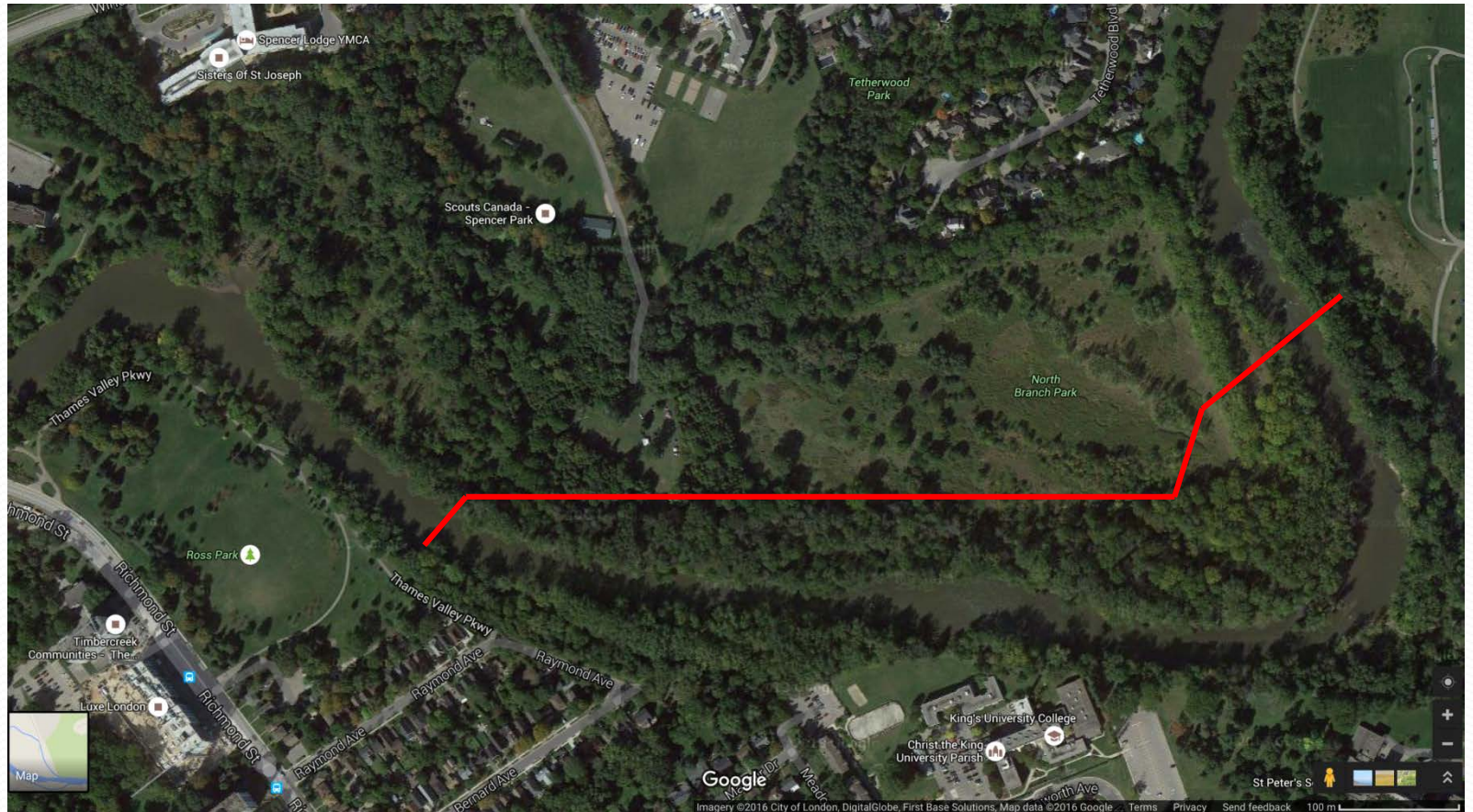


Planned North Branch of TVP



Public Process – CATCH 22

- Improve public input process when species at risk are involved
 - This council has been committed to public input, but in this case the public was not fairly engaged in the process as, understandably, they were not informed about species at risk
 - This means that public input does not include key information on which to base their opinions

Recommendation: Improve process when species at risk are involved

Unique Urban Area Should Be Protected

- We oppose this alternative because the construction of the two bridges from the south to the north side of the Thames will greatly increase access by people and their pets to this sensitive area where SARS are located.
- The long term impacts of this project are unknown, and the risk to the environment is high.
- **Recommendation: Direct staff to include funds for monitoring program in the appropriate budget years**