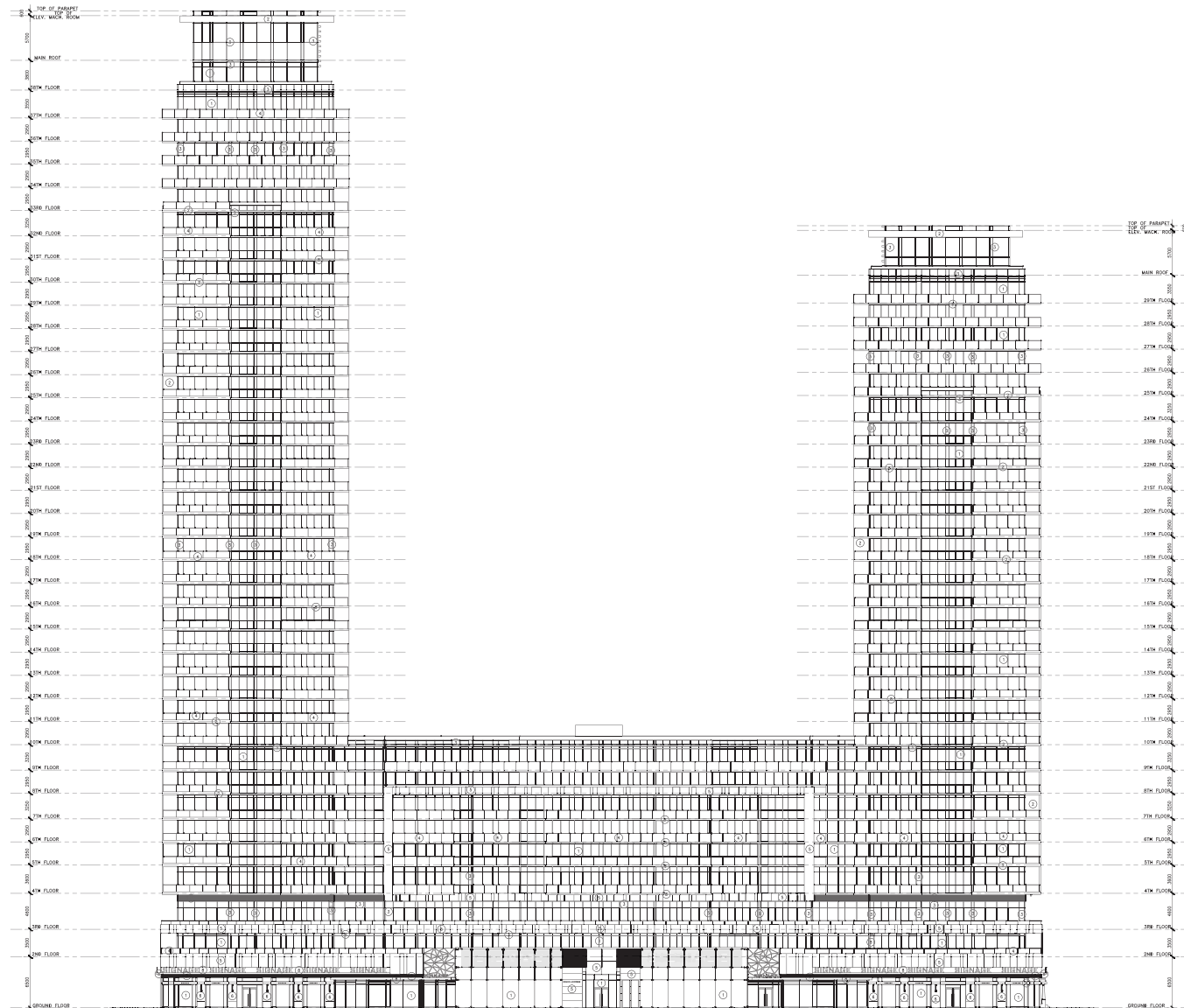


NOT FOR CONSTRUCTION

SHADED AREAS  
DENOTE - PREVIOUSLY BUILT  
PHASES



- LEGEND**
- ① VISION GLASS
  - ② PRECAST PANEL
  - ③ SPANDELL GLASS
  - ④ ALUM./GLASS PARAPET
  - ⑤ CERAMIC PANELS
  - ⑥ STONE VENEER (GRANITE)
  - ⑦ ALUMINUM LOUVER
  - ⑧ METAL PANEL
  - ⑨ BRICK VENEER
  - ⑩ METAL/GLASS CANOPY

NO.	DATE	REVISIONS

CONSTRUCTION SHALL VERIFY ALL DIMENSIONS AND BE RESPONSIBLE FOR OBTAINING PERMITS AND COMPLIANCE TO THE ARCHITECT BEFORE COMMENCING THE WORK.  
DIMENSIONS ARE NOT TO SCALE.

**RICHMOND | Architects Ltd.**

310 GILLESPIE STREET  
SUITE 200  
TORONTO, ONTARIO M6T 1S6

T 416 963 2667  
F 416 963 2622  
RICHMONDARCH.COM

Proposed Mixed Used Development  
Fullerton St. and Tabot St.-City of London

Rygar Corporation Inc.  
Tel: (519) 318 8001

Sheet No. **ELEVATION EAST**

--	--

Date/Revised: 25 JAN 2016	Date: 16 NOV 2015
---------------------------	-------------------

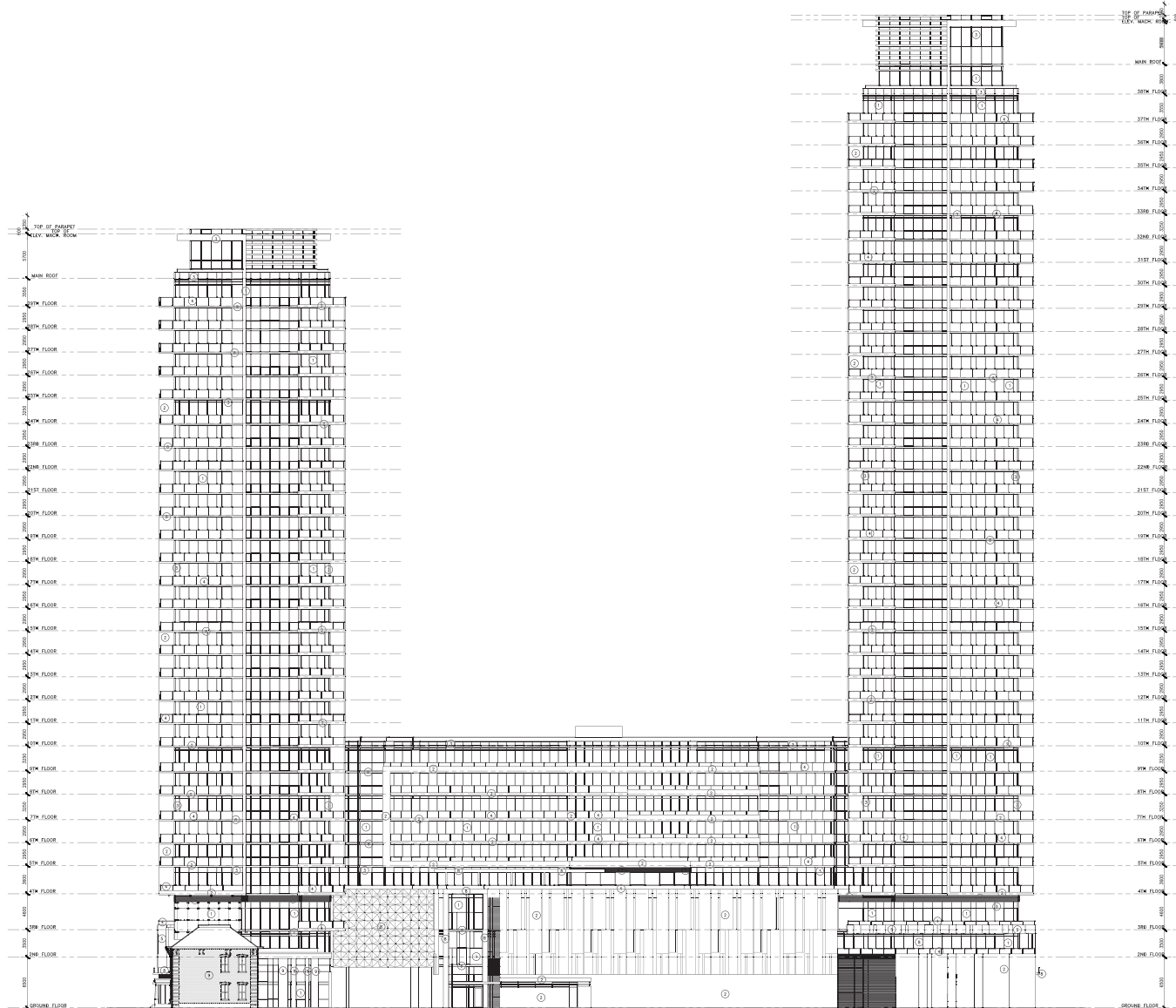
Drawn By:	Scale: 1:200
-----------	--------------

Checked By:	Revision Number:
-------------	------------------

Year: 2015-004	Sheet: SP A401
----------------	----------------

NOT FOR CONSTRUCTION

SHADED AREAS  
DENOTE - PREVIOUSLY BUILT  
PHASES



**LEGEND**

- ① VISION GLASS
- ② PRECAST PANEL
- ③ SPANDELL GLASS
- ④ ALUM./GLASS PARAPET
- ⑤ CERAMIC PANELS
- ⑥ STONE VENEER (GRANITE)
- ⑦ ALUMINUM LOUVERS
- ⑧ METAL PANEL
- ⑨ BRICK VENEER
- ⑩ METAL/GLASS CANOPY

NO.	DATE	REVISIONS	REMARKS

**RICHMOND | Architects Ltd.**  
 519 QUEEN STREET WEST  
 SUITE 2000  
 TORONTO, ONTARIO M5T 1B5  
 TEL: 416 963 2667  
 FAX: 416 963 2622  
 WWW.RICHMONDARCH.COM

Proposed Mixed Use Development  
 Fullerton St. and Tabot St.-City of London  
 Rygar Corporation Inc.  
 Tel: (519) 318 8001

**ELEVATION WEST**

Date/Revised:	25 JAN 2016	Date:	16 NOV 2015
Drawn By:		Scale:	1:200
Checked By:		Revision Number:	
Job No.:	2015-004	Sheet No.:	SP A402