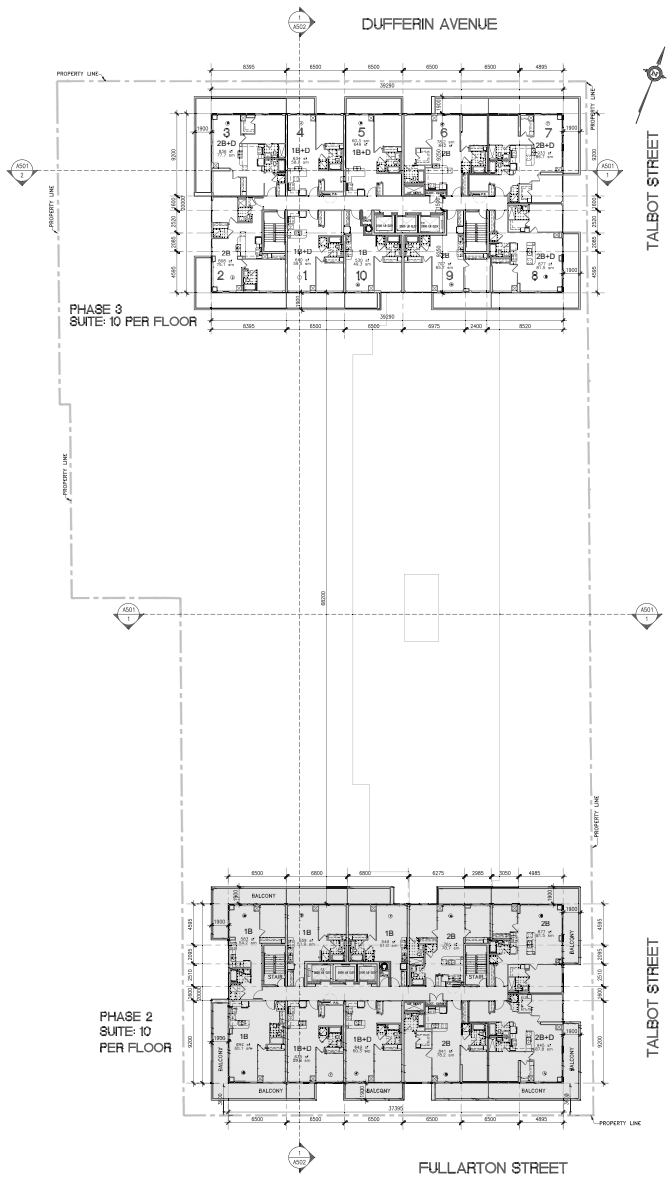


PHASE 2
SUITE: 10
PER FLOOR

1 11-24TH FLOOR PLAN - PHASE 2
SCALE 1:200



PHASE 3
SUITE: 10 PER FLOOR

2 11-24TH FLOOR PLAN - PHASE 2&3
SCALE 1:200

GENERAL NOTES

NOT FOR CONSTRUCTION

SHADDED AREAS
DENOTE - PREVIOUSLY BUILT
PHASES

NO	DATE	REVISIONS	REMARKS
CONSTRUCTION SHALL VERIFY ALL DIMENSIONS AND BE RESPONSIBLE FOR OBTAINING PERMITS AND COMPLIANCE TO THE ARCHITECT BEFORE COMMENCING THE WORK.			
PRINTS ARE NOT TO BE SCALED.			

RICHMOND | Architects Ltd.

310 DUFFERIN STREET
SUITE 200 - FLOOR 2
TORONTO, ONTARIO M5T 1B6
TEL: 416 963 2667
F: 416 963 2622
RICHMONDARCH.COM

Client:
Proposed Mixed Use Development
Fullarton St. and Talbot St.-City of London

Rygar Corporation Inc.
Tel: (516) 318 8001

Sheet:
11-24TH FLOOR
PLAN PHASE 2& 3

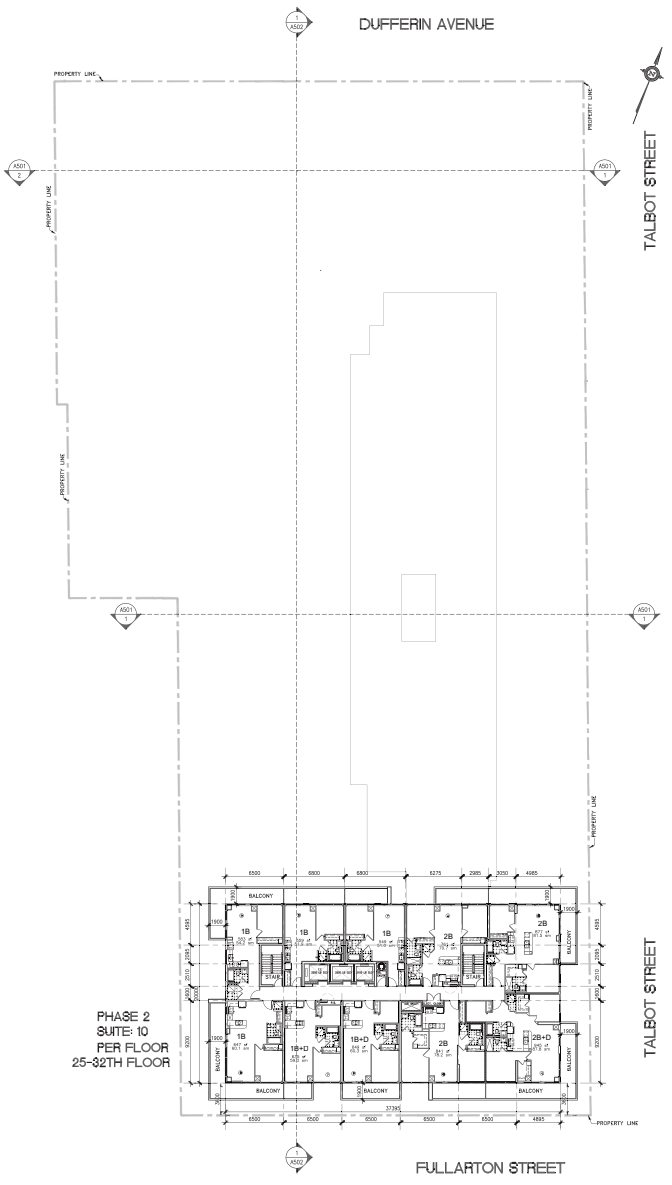


Date/Revised: 25 JAN 2016

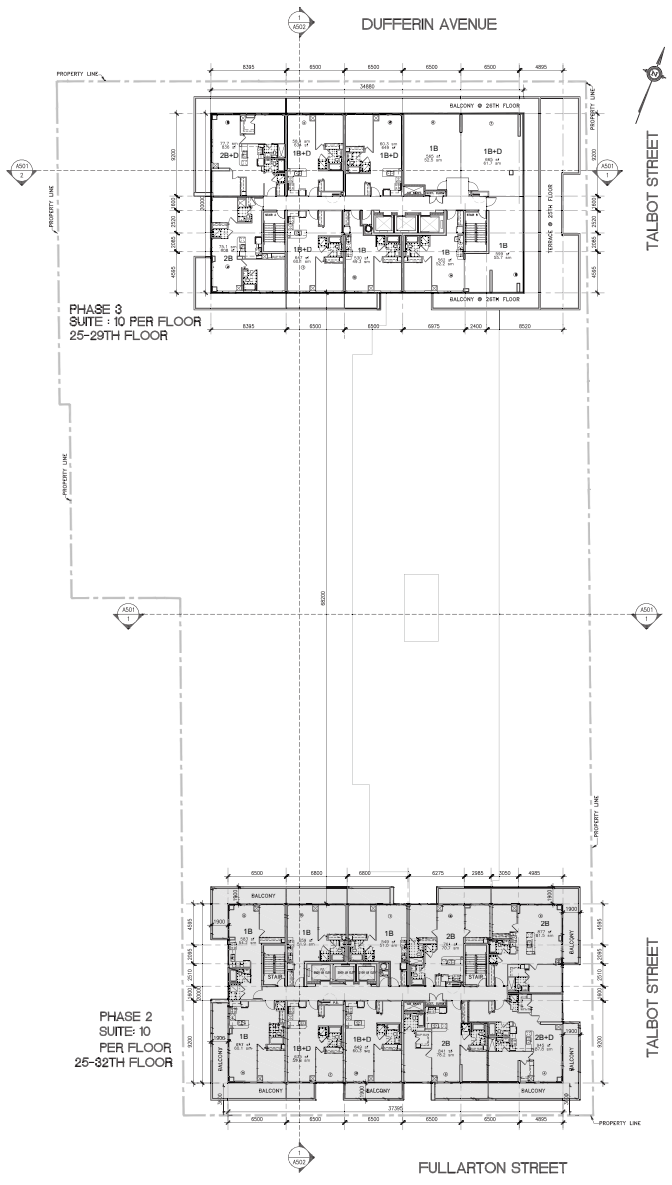
Scale: 1:200

Sheet No: SP A308

Year: 2015-004



1 25-32ND FLOOR PLAN - PHASE 2
SCALE 1:200



2 25-32ND TH FLOOR PLAN - PHASE 2; 25-29TH TH FLOOR PLAN - PHASE 3
SCALE 1:200

GENERAL NOTES

NOT FOR CONSTRUCTION

SHADED AREAS
DENOTE - PREVIOUSLY BUILT
PHASES

NO.	DATE	REVISIONS
REVISIONS		
CONSTRUCTION SHALL VERIFY ALL DIMENSIONS AND BE RESPONSIBLE FOR SAME. VERIFY ANY AND CORRECTED TO THE ARCHITECT BEFORE COMMENCING THE WORK. PHOTOS ARE NOT TO BE SCALED.		

RICHMOND | Architects Ltd.

218 COLLIER STREET
SUITE 200
TORONTO, ONTARIO M5T 1R5
RICHMONDARCH.COM

Proposed Mixed Use Development
Fullarton St. and Talbot St.-City of London

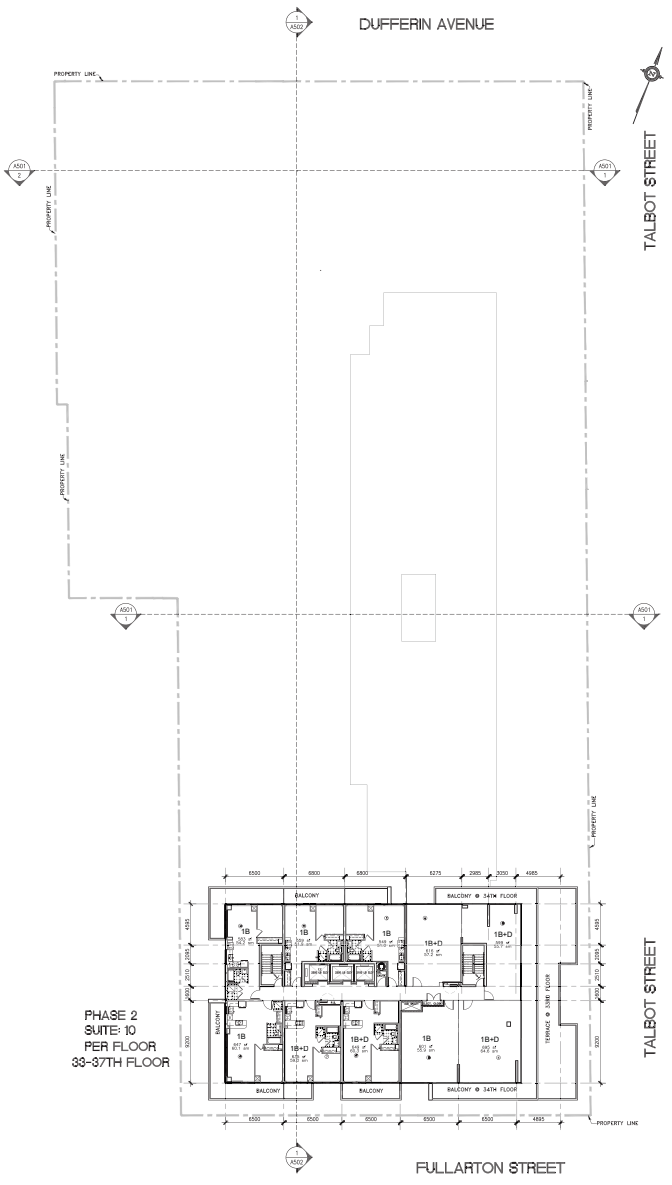
Rygar Corporation Inc.
Tel: (516) 318 8001

25-32ND FLOOR PLAN
PHASE 2& 3



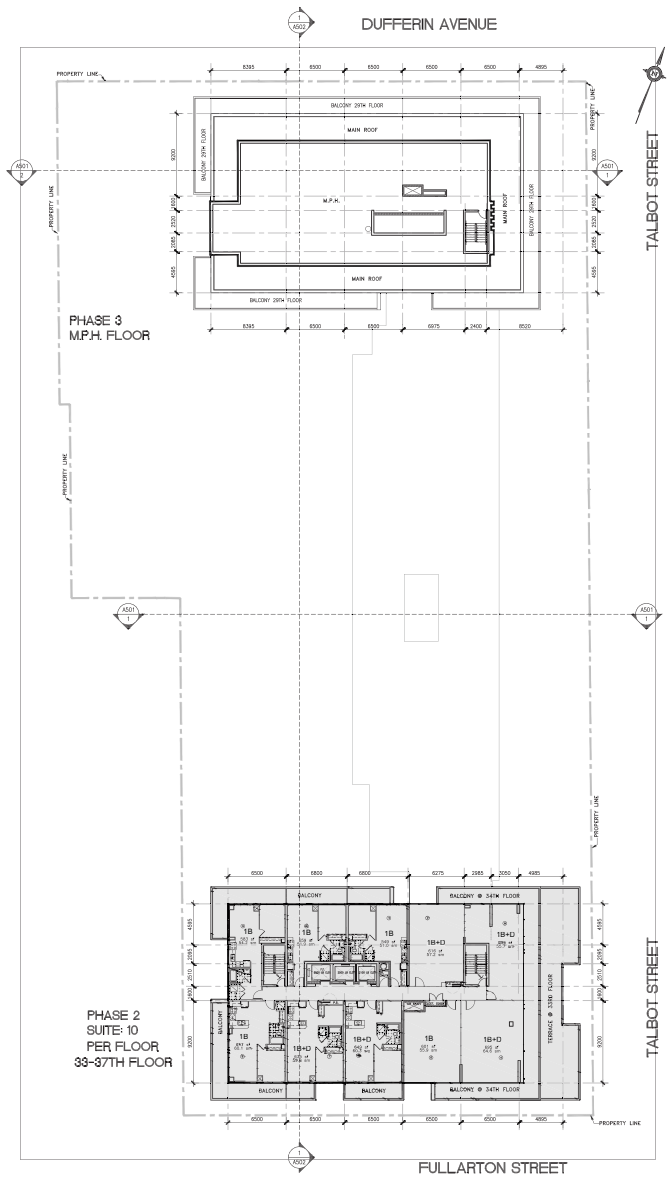
Date: 25 JAN 2016
Scale: 1:200

2015-004
SP A309



PHASE 2
SUITE 10
PER FLOOR
33-37TH FLOOR

1
310 33-37TH FLOOR PLAN - PHASE 2
SCALE 1:200



PHASE 3
M.P.H. FLOOR

2
310 33-37TH FLOOR PLAN - PHASE 2; M.P.H. FLOOR PLAN - PHASE 3
SCALE 1:200

GENERAL NOTES

NOT FOR CONSTRUCTION

SHADED AREAS
DENOTE - PREVIOUSLY BUILT
PHASES

NO.	DATE	REVISIONS	REMARKS
REVISIONS			
CONSTRUCTION SHALL VERIFY ALL DIMENSIONS AND BE RESPONSIBLE FOR SAME. REVIEW AND ANY DISCREPANCIES TO THE ARCHITECT BEFORE COMMENCING THE WORK.			
PHASES ARE NOT TO BE SCALE.			

RICHMOND | Architects Ltd.

218 COLLEGE STREET
SUITE 200
TORONTO, ONTARIO M5T 3B5

T 416 963 3667
F 416 963 3667
RICHMONDARCH.COM

Job No:
Proposed Mixed Used Development
Fullerton St. and Talbot St.-City of London
Rygar Corporation Inc.
Tel: (516) 318 8001
Phase No:
33-37TH FLOOR PLAN-PHASE 2
M.P.H. PLAN-PHASE 3

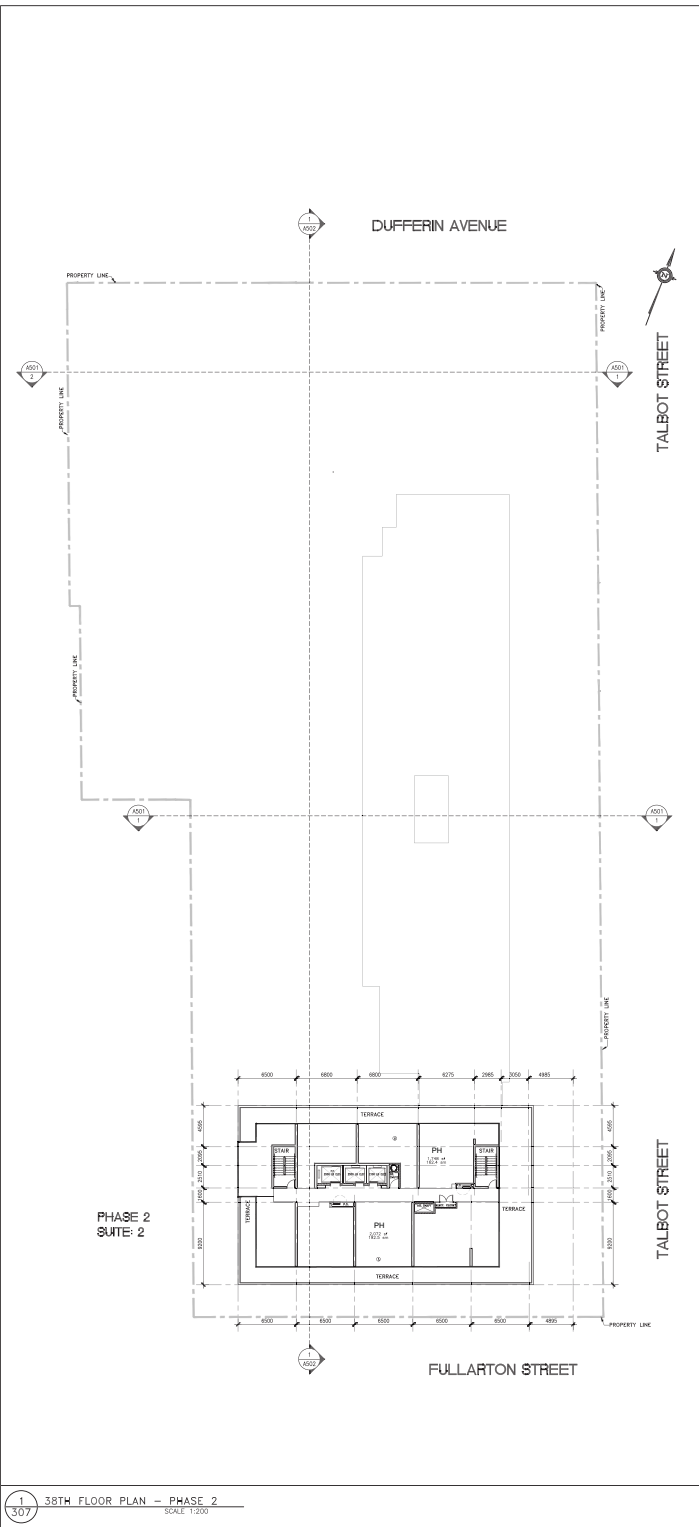


Date: 25 JAN 2016

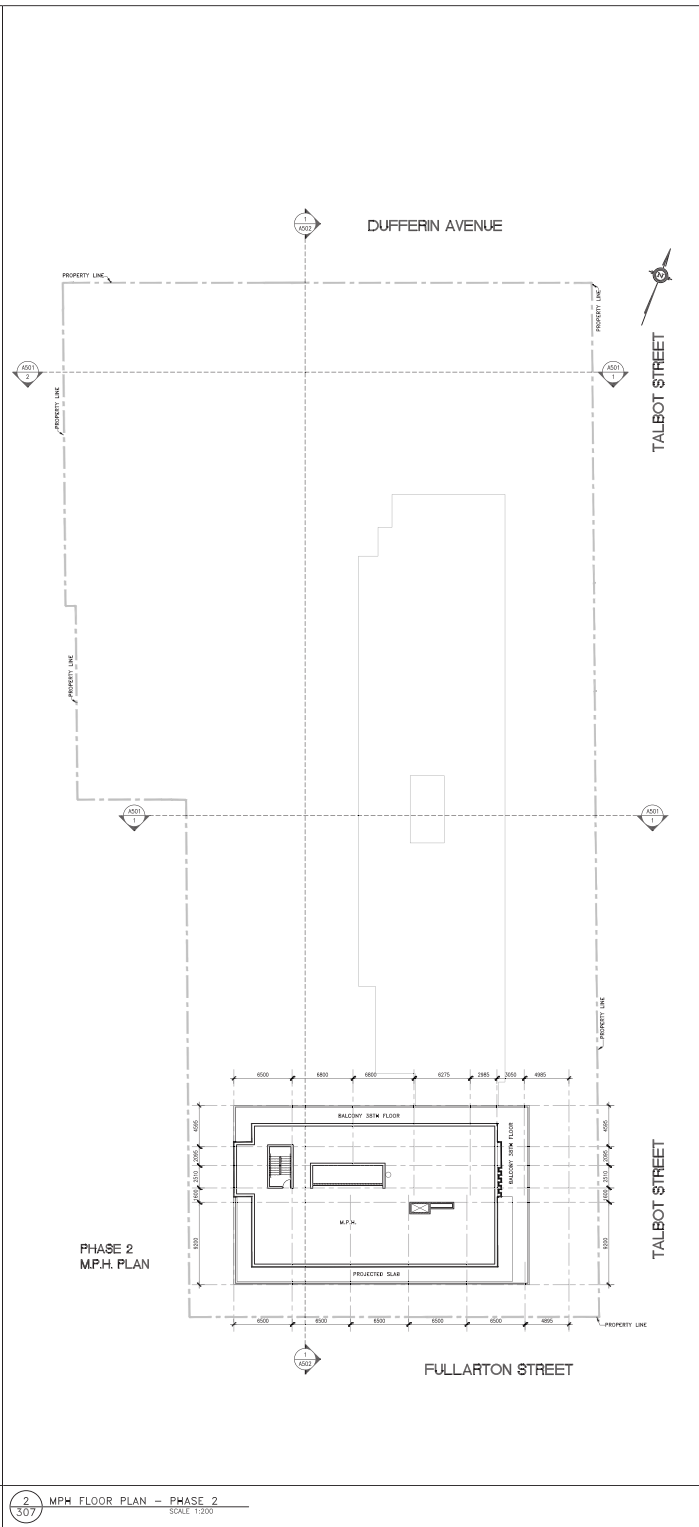
Scale: 1:200

Sheet No: 2015-004

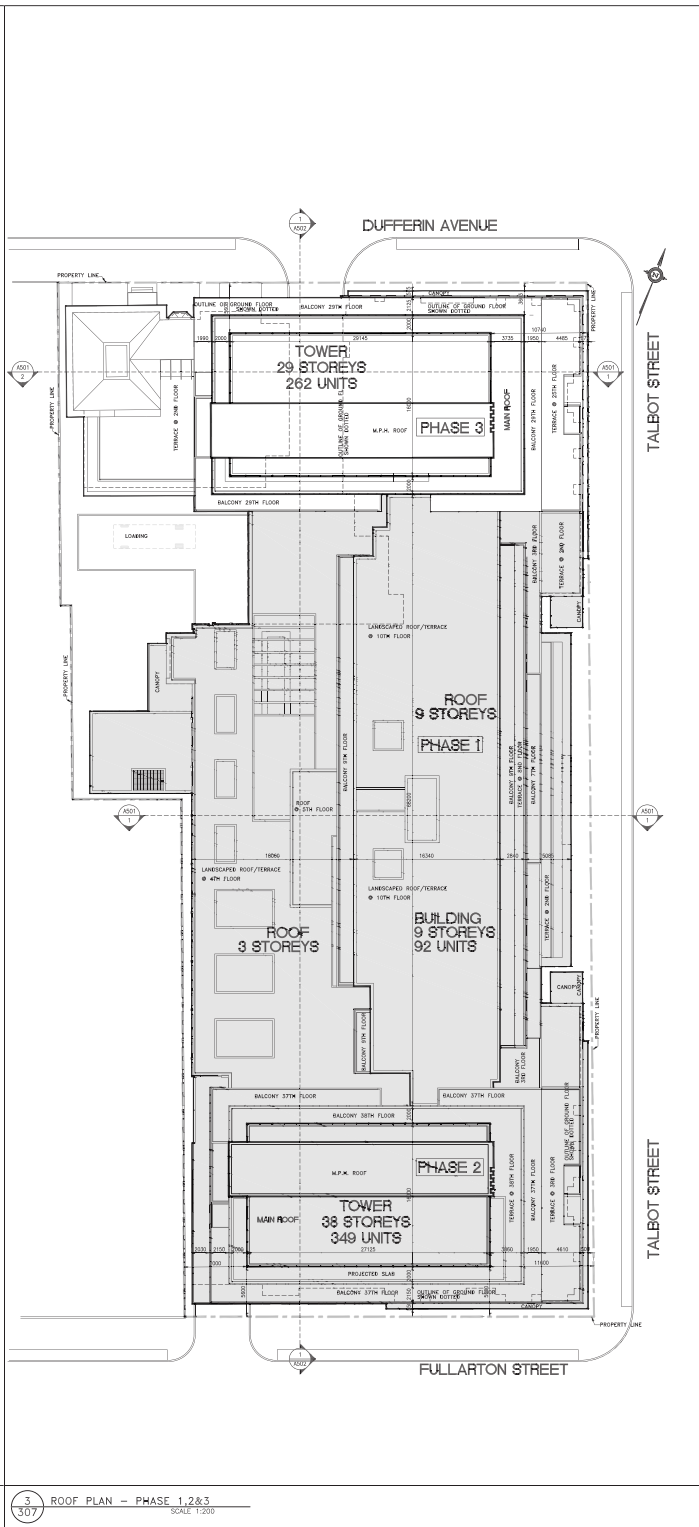
SP A310



1 307 38TH FLOOR PLAN - PHASE 2
SCALE 1:200



2 307 M.P.H. FLOOR PLAN - PHASE 2
SCALE 1:200



3 307 ROOF PLAN - PHASE 1,2&3
SCALE 1:200

GENERAL NOTES

NOT FOR CONSTRUCTION

SHADED AREAS
DENOTE - PREVIOUSLY BUILT
PHASES

NO.	DATE	REVISIONS	REMARKS
REVISIONS CONTRACTOR SHALL VERIFY ALL DIMENSIONS AND BE RESPONSIBLE FOR OBTAINING PERMITS AND COMPLIANCE TO THE APPLICABLE REGULATIONS CONCERNING THE WORK. PRINTS ARE NOT TO BE SCALE.			
RICHMOND Architects Ltd. 519 DALLAS STREET 2ND FLOOR TORONTO, ONTARIO M5T 1S5			
Tel: (416) 963 2567 P: (416) 963 2552 RICHMONDARCH.COM			
Proposed Mixed Used Development Fullarton St. and Talbot St.-City of London Rygar Corporation Inc. Tel: (516) 318 8001			
SHEET: 38TH FLOOR PLAN-PHASE 2 MPH-PHASE 2; ROOF-PHASE 1,2&3			
		Date/Revised: 14 JAN 2016 Drawn By: [Blank] Checked By: [Blank]	
Scale: 1:200 Revision Number: [Blank]		SHEET: 2015-004 OF SP A311	



