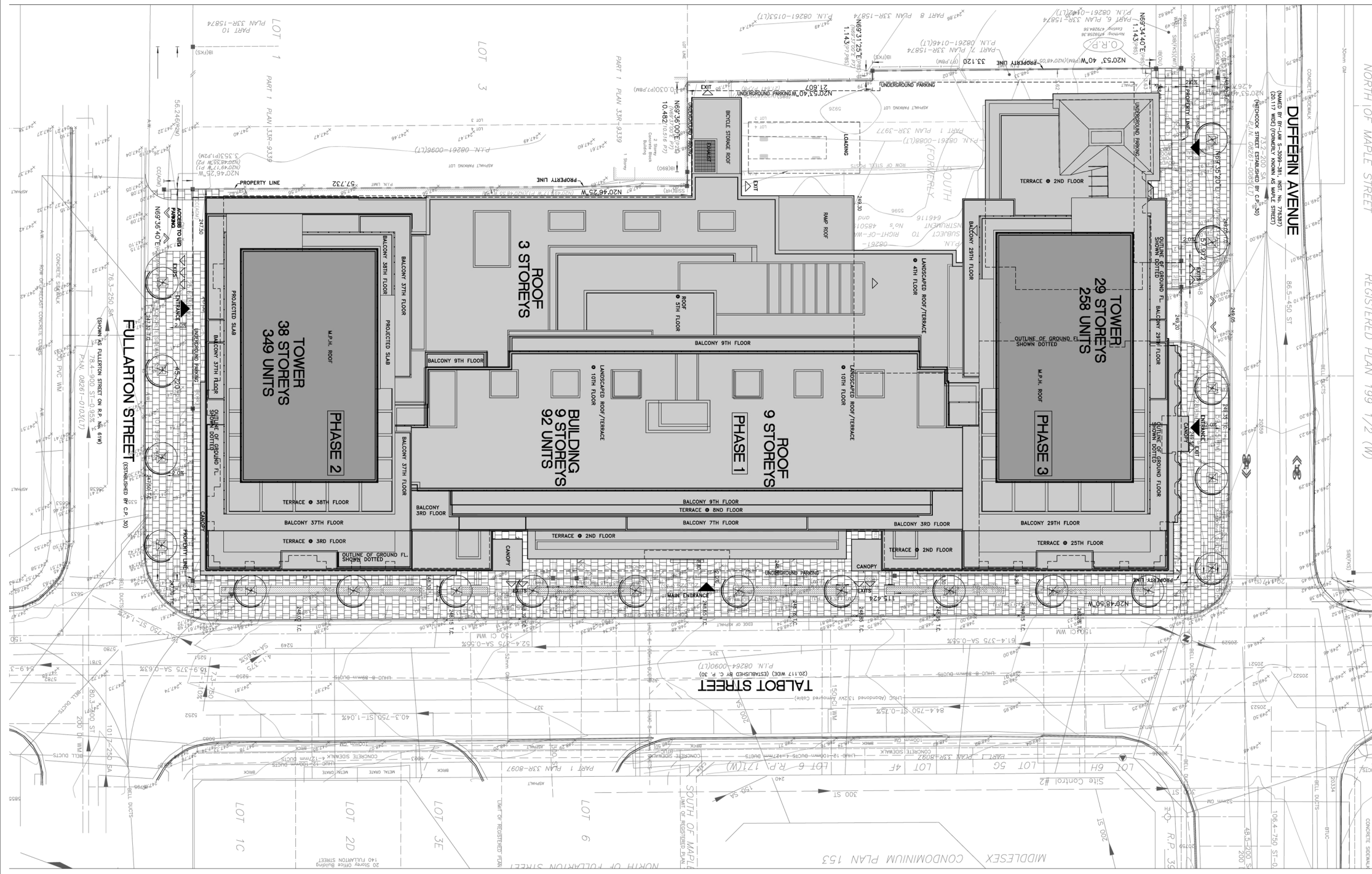


NOT FOR CONSTRUCTION



NORTH OF MAPLE STREET REGISTERED PLAN 199 1/2 (W)

DUFFERIN AVENUE  
(NAMED BY BY-LAW S. 309-981, INST. NO. 775897)  
(20117 WIDE) (FORMERLY KNOWN AS MAPLE STREET)  
(MIDBLOCK STREET) (200' WIDE) (BY C.P. 230)

FULLARTON STREET (CONSIDERED @ CA. 50)

TALBOT STREET  
(20117 WIDE) (ESTABLISHED BY C.P. 20)  
(P.L.N. 08264-0080(LT))

NO.	DATE	REVISIONS	REMARKS

**RICHMOND | Architects Ltd.**  
243 COLLEGE STREET # 416 961 1567  
SECOND FLOOR # 416 961 1321  
TORONTO, ONTARIO M5T 1K5 RICHMONDMARCH.COM

Proposed Mixed Used Development  
Fullarton St. and Talbot St.-City of London  
Rygar Corporation Inc.  
Tel: (519) 318 8001

MASTER STREETScape PLAN



Date Plotted: 03 MAY 2016  
Drawn By: [Name]  
Checked By: [Name]

SP 1A101  
2015-004