

**5TH REPORT OF THE**  
**ACCESSIBILITY ADVISORY COMMITTEE**

Meeting to be held on May 26, 2016, commencing at 3:01 PM, in Committee Room #4 and Committee Room #3, Second Floor, London City Hall.

**PRESENT:** M. Dawthorne (Chair), M. Cairns, F. de Lasa, L. Firby, J. Higgins, J. Madden and J. Sanders and H. Lysynski (Acting Secretary).

**ABSENT:** J. Bell, C. Dodman, J. Ehiwario, A. Forrest and J. Menard.

**ALSO PRESENT:** C. da Silva, K. Husain, L. Lalonde, L. McDougall and K. Walsh.

---

**I. CALL TO ORDER**

1. Disclosures of Pecuniary Interest

That it BE NOTED that no pecuniary interests were disclosed.

**II. SCHEDULED ITEMS**

2. Accessible Pedestrian Signals

That it BE NOTED a verbal delegation from S. Dinnin, CNIB, with respect to the location of audible pedestrian signals to be installed was received; it being noted that Mrs. S. Dinnin will attend the next Built Environment Sub-Committee to further discuss locations.

3. Community Diversity and Inclusion Strategy

That C. Smith, Acting Director of Community and Economic Innovation, BE REQUESTED to attend the next Policy Sub-Committee meeting to discuss the Community Diversity and Inclusion Strategy; it being noted that the Accessibility Advisory Committee was unable to accommodate the verbal delegation from C. Smith, Acting Director of Community and Economic Innovation and A. Zuidema, City Manager, with respect to this matter.

**III. SUB-COMMITTEES & WORKING GROUPS**

4. Mental Health

That it BE NOTED that the Mental Health Working Group minutes from its meeting held on May 2, 2016, were received.

## 5. Policy

That the following actions be taken with respect to the Policy Sub-Committee:

- a) the Policy Sub-Committee BE REQUESTED to continue to review the proposed Accessible Outdoor Guide at its next meeting; and,
- b) it BE NOTED that the Policy Sub-Committee minutes from its meeting held on May 2, 2016, were received.

## 6. Built Environment

That the following actions be taken with respect to the Built Environment and Facilities Sub-Committee:

- a) the Policy Sub-Committee BE REQUESTED to review the current City of London Zoning By-law No. Z.-1 for terminology that may conflict with the *Accessibility for Ontarians with Disabilities Act*, Reg. 413/12 Integrated Accessibility Standards relative to the technical requirements for recreational trails, sections 80.6 to 80.15, or other accessibility concerns; and,
- b) it BE NOTED that the Built Environment and Facilities Sub-Committee minutes from its meeting held on May 9, 2016, were received.

## 7. Education and Awareness

That it BE NOTED that the Education and Awareness Working Group minutes from its meetings held on May 2 and May 9, 2016, were received.

# IV. CONSENT ITEMS

## 8. 4th Report of the Accessibility Advisory Committee

That it BE NOTED that the 4th Report of the Accessibility Advisory Committee from its meeting held on April 28, 2016, were received.

## 9. Pedestrian Crossover Program - Municipal Council Resolution

That the Civic Administration BE REQUESTED to provide a presentation to the next Accessibility Advisory Committee (ACCAC) meeting with respect to the Pedestrian Crossover Program; it being noted that the ACCAC reviewed the Municipal Council resolution adopted at its session held on May 3, 2016 with respect to this matter.

10. 3rd Report of the Accessibility Advisory Committee -  
Municipal Council Resolution

That it BE NOTED that the Municipal Council resolution adopted at its session held on May 3, 2016 with respect to the 3rd Report of the Accessibility Advisory Committee from its meeting held on March 24, 2016, was received.

11. The London Plan

That it BE NOTED that the Notice of Public Participation Meeting and Public Open House with respect to The London Plan, was received.

**V. ITEMS FOR DISCUSSION**

12. Defining and Applying Diversity: Gender Lens - Municipal Council Resolution

That it BE NOTED that the Municipal Council resolution adopted at its session held on May 3, 2016 with respect to "Defining and Applying Diversity: 'Gender Lens'" and the accompanying communication dated April 26, 2016, from N. Garrison, were received.

13. Trails Focus Group Update

That the following actions be taken with respect to the Trails Focus Group update:

- a) the Guidelines for Management Zones and Trails in Environmentally Significant Areas, 2016 document BE AMENDED in Section 7.1.1 to replace the sentence at the end of the second paragraph with the following two sentences: "*The Design of Public Spaces Standard* (Ontario Reg 191/11) ("the Standard") recognizes that there can be exceptional conditions where the need to provide accessible trails may need to be balanced with other legitimate concerns. In such instances, the City is expected to meet the requirements of the Standard to the greatest extent possible";
- b) all references to Level 1 trail widths being 0.5 to 1.5 metres BE AMENDED to read 1.0 to 1.5 metres; and,
- c) the Civic Administration BE ADVISED that the Accessibility Advisory Committee endorses the Guidelines for Management Zones and Trails in Environmentally Significant Areas, 2016 pending the completion of the proposed amendments noted in parts a) and b) above;

it being noted that the Accessibility Advisory Committee received heard a verbal presentation and received the attached communication from the Illustrated Technical Guide to the Accessibility Standard for the Design of Public Spaces from L. McDougall, Ecologist Planner, with respect to this matter.

14. Joint Discussion of Advisory Committees

That S. Ratz and A. Stratton BE ADVISED that K. Husain will attend the Education/Outreach Joint Discussion of Advisory Committees.

**VI. DEFERRED MATTERS/ADDITIONAL BUSINESS**

15. (ADDED) Home County Folk Festival

That F. de Lasa BE REQUESTED to advise the Home County Folk Festival that the Accessibility Advisory Committee (ACCAC) will not be participating in the Home County Folk Festival this year; it being noted that the ACCAC received a 2016 Home County Music and Art Festival Community Lane application.

**VII. ADJOURNMENT**

The meeting adjourned at 5:14 PM.

NEXT MEETING DATE: June 23, 2016

## 2.2.4 Exceptions for Recreational Trails

### The Requirements of this Section apply to:

Government of Ontario, Legislative Assembly, and Designated Public Sector Organizations	Private / Not-for-Profit Sector Organizations	
	Large	Small
✓	✓	✓

*Regulation Reference: [80.14](#) and [80.15](#) (see [page 23](#) for link to the regulation)*

There may be instances where it is not possible to build recreational trails that fully comply with the minimum requirements of the Standard. Exceptions are permitted in some instances where the value, significance or characteristics of the existing environment are exceptional, have significant heritage value or are in close proximity to protected natural habitats. The Standard recognizes that there can be exceptional conditions where the need to provide accessible trails may need to be balanced with other legitimate concerns. In such instances, the obligated organizations are expected to meet the requirements of the Standard to the greatest extent possible.

### **Application**

Where it can be successfully demonstrated that cultural heritage, natural heritage, national historic interest or ecological integrity would be negatively impacted by applying the requirements of the Standard to a recreational trail, exceptions may be granted. Exceptions may also be permitted where existing physical or site constraints do not allow for modifications or additions.

Refer to Section 1.8 for a more detailed explanation of exceptions.

## 2.2.5 Design Study - Recreational Trails

The study highlights some of the better practices used in the development of an accessible recreational trail in York Region – a regional municipality located just north of Toronto.

### Background:

York Region developed and manages a recreation trail system at the Hollidge Tract in the York Region Forest. The trail system is a public facility which incorporates a variety of trails and related parking facilities, including a one-kilometer long accessible trail configured as a loop.

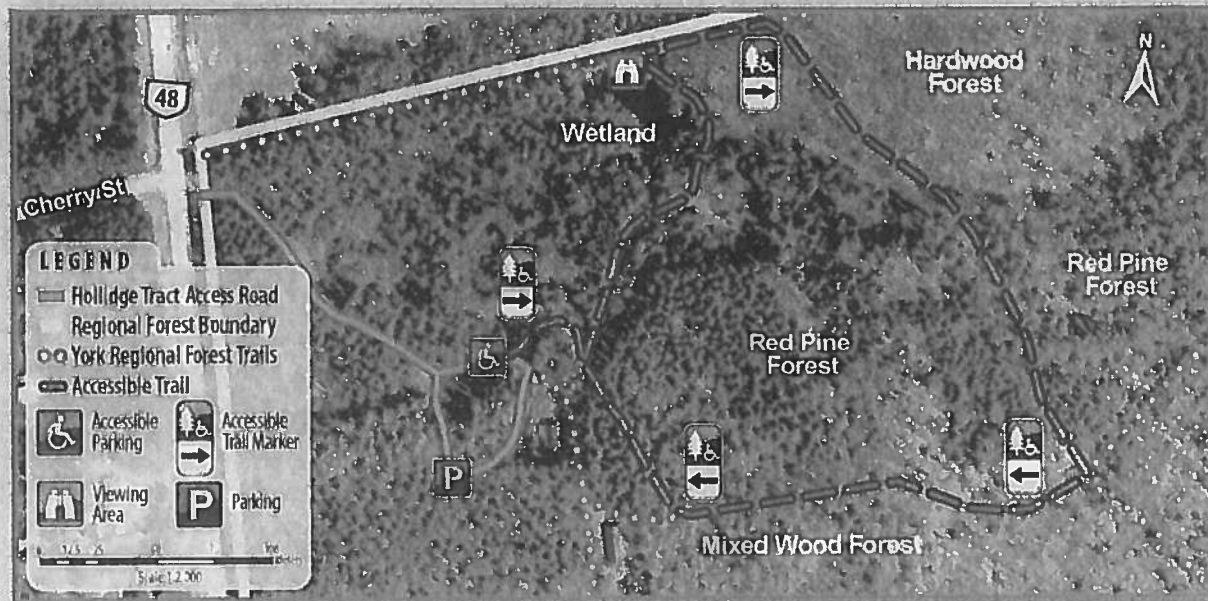


**Photo 2.2.5.1** Trail Signage



**Photo 2.2.5.2** Edge Protection at Trail

## 2.2.5 Design Study - Recreational Trails



**Figure 2.2.5.1** Aerial View of Hollidge Tract Accessible Trail.

### *Hollidge Tract Accessible Trail*

*16389 Hwy 48, Whitchurch-Stouffville*

#### Accessibility Information

Trail Length 1.1 km (0.7 mi)

Cumulative Gain 18m (61 ft)

Elevation Change Loss 6m (19 ft)



#### Typical Grade is 2.3%

37% of the trail is between 3% and 5%  
349m (1146 ft) is between 4% and 5%



#### Typical Cross Slope is 1.8%

22% of the trail is between 3% and 5%  
55m (180 ft) is between 4% and 5%



#### Typical Tread Width is 187cm (74 in)

Tread Width ranges from 152cm (60 in)  
to 366cm (144 in)



#### Trail Surface is Soil

100% of the trail is Firm or better  
1100m (3612 ft) of the trail is Firm



**Photo 2.2.5.3** Trail Head Information

**Figure 2.2.5.2** Trail Head Signage

## 2.2.5 Design Study - Recreational Trails



**Photo 2.2.5.4** Accessible Trail



**Photo 2.2.5.5** Edge Protection at Trail Outlook



**Photo 2.2.5.6** Accessible Parking at Trail Head

### Design Features:

The configuration and characteristics of the accessible trail are identified to users through trailhead signage. The signage provides information on a variety of key trail characteristics which will allow potential users to decide if the challenge level aligns with their recreational goals. Information is provided on the length of the trail, typical grade, typical cross-slope, trail width, and trail surface. Refer to Figure 2.2.5.2. In addition to the trailhead signage, directional signs are included along the trail.

Three accessible parking spaces are provided, close to the trailhead. Other accessibility related features of the trail include: wide entry points; appropriate overhead clearances along the entire length of the trail, that are regularly maintained; generous trail width that allows people using wheelchairs or other mobility aids to pass anywhere along the trail; compacted granular surfaces to provide a firm and stable surface; and use of lumber and boulders to provide edge protection where there are drop-offs adjacent to the trail and its viewing areas.

The Hollidge Tract Accessible Trail has been constructed by York Region and can be enjoyed at 16389 Highway 48, Whitchurch-Stouffville, Ontario.



## 2.2.5 Design Study - Recreational Trails

York Region also published a brochure which illustrates the trail configuration and its characteristic, as well as the accessibility features that users can expect to encounter.



Figure 2.2.5.3 Trail Brochure