

Creative Properties Design Build Group 240 Waterloo Street
THE ROUNDHOUSE

PEC June 13, 2016
 City of London



Creative Properties Design Build Group

- A residential and commercial real estate development and leasing company located in London.
- Focusing on Horton and Waterloo – all four corners

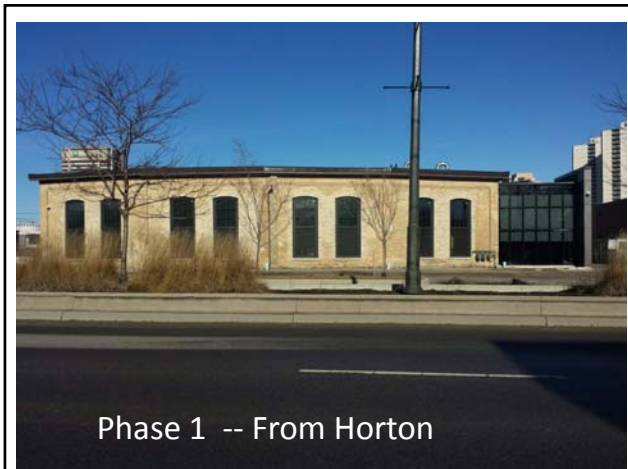
First shown in 2013



- From the very outset in 2013 with the project's public announcement, the full site design concept plans prepared by architects Nicholson Sheffield Architects were then presented to City of London staff and politicians. They included a signature, architecturally-significant high-rise residential and commercial tower.
- Located on the northerly portion of the 240 Waterloo St. site of the Roundhouse, the tower is the final project phase (Phase 3) of development for the northeast corner of the larger strategic assembly of adjacent properties, which includes all four (4) corners of the intersection of Horton & Waterloo.

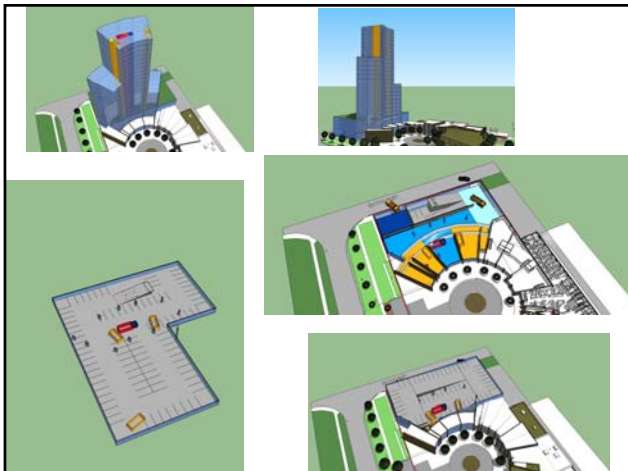
Request by the Creative ... Group

The proposed London Plan should openly incorporate the London Roundhouse site's future full development, or an application for the full site development should be grand-fathered prior to its adoption, to realize the full potential and ensure the future development of this important London landmark.



PHASE 1 AWARDS

- recognized nationally, provincially and locally – and recently internationally, including:
- • Cornerstone Award for Building Heritage— National Trust for Canada (2015)
- • Paul Oberman Award for Adaptive Reuse— Architectural Conservancy of Ontario (2015)
- • London Heritage Award (2016)
- • International Railway Heritage – Calgary 2016



Request by the Creative ... Group

The proposed London Plan should openly incorporate the London Roundhouse site's future full development, or an application for the full site development should be grand-fathered prior to its adoption, to realize the full potential and ensure the future development of this important London landmark.

Thank you