

**6TH REPORT OF THE**  
**TREES AND FORESTS ADVISORY COMMITTEE**

Meeting held on June 1, 2016, commencing at 12:15 PM, in Committee Room #4, Second Floor, London City Hall.

**PRESENT:** R. Mannella (Chair), A. Cantell, P. Ciufu, C. Dyck, J. Kogelheide, C. Linton and G. Mitchell and J. Martin (Secretary).

**ABSENT:** C. Haindl and D. Pavletic.

**ALSO PRESENT:** Councillor T. Park; A. Beaton, I. Listar, J. Ramsey and S. Rowland.

---

**I. CALL TO ORDER**

1. Disclosures of Pecuniary Interest

That it BE NOTED that no pecuniary interests were disclosed.

**II. SCHEDULED ITEMS**

2. Green Legacy Program Presentation

That it BE NOTED that the ~~attached~~ presentation from R. Johnson, Green Legacy Manager, Wellington Country with respect to the Green Legacy Program Presentation, was received.

3. Urban Forest Strategy

That it BE NOTED that the ~~attached~~ presentation from I. Listar, Urban Forester with respect to the Urban Forest Strategy, was received.

4. Planting Strategy

That it BE NOTED that a verbal update from S. Rowland, Urban Forestry Planner with respect to the Planting Strategy, was received.

**III. CONSENT ITEMS**

5. 5th Report of the Trees and Forests Advisory Committee

That it BE NOTED that the 5th Report of the Trees and Forests Advisory Committee, from its meeting held on April 27, 2016, was received.

6. Notice of Public Participation Meeting and Public Open House for the London Plan

That it BE NOTED that a Notice dated May 4, 2016, from J. Adema, Planner, with respect to a Public Participation Meeting and Public Open House for the London Plan, was received.

7. Municipal Council Resolution - 4th Report of the Trees and Forests Advisory Committee

That it BE NOTED that the Municipal Council resolution adopted at its meeting held April 19, 2016 with respect to the 4th Report of the Trees and Forests Advisory Committee, was received.

8. Municipal Council Resolution - 5th Report of the Trees and Forests Advisory Committee

That it BE NOTED that the Municipal Council resolution adopted at its meeting held May 17, 2016 with respect to the 5th Report of the Trees and Forests Advisory Committee, was received.

9. Defining and Applying Diversity - "Gender Lens"

That it BE NOTED that the Municipal Council resolution from its session held on May 3, 2016, with respect to "Defining and Applying Diversity: 'Gender Lens,'" with the related communication dated April 26, 2016, from N. Garrison, Western University, were received.

10. Education/Outreach Joint Discussion of Advisory Committees

That it BE NOTED that the communication dated April 25, 2016 from S. Ratz Advisory Committee on the Environment and A. Stratton, Transportation Advisory Committee, with respect to the education/outreach joint discussion of advisory committees, was received.

**IV. SUB-COMMITTEES & WORKING GROUPS**

11. Allergens, Climate Change and Invasives Working Group

That it BE NOTED that a verbal update from A. Cantel, on behalf of the Allergens, Climate Change and Invasives Working Group, was received.

**V. ITEMS FOR DISCUSSION**

12. 1995 Dingman Creek Objectives - C. Linton

That it BE NOTED that discussion with respect to the Dingman Creek Objectives was deferred to the next meeting of the Trees and Forests Advisory Committee; it being noted that a communication dated April 8, 2016 and a verbal update from C. Linton, with respect to this matter, was received.

**VI. DEFERRED MATTERS/ADDITIONAL BUSINESS**

None.

**VII. ADJOURNMENT**

The meeting adjourned at 2:55 PM.

**NEXT MEETING DATE: June 22, 2016**



# The County of Wellington's Green Legacy Programme



**Celebrating 162 Years with over 2,000,000  
Trees 2004 to 2016**

## Trees Started by Local Schools



Seeds in the Classroom

## Students Volunteering at the Nursery



**Over 20,000 volunteer hours logged  
yearly**

## Planting Trees in the County of Wellington



**Grade 7 and 8 students planting trees**

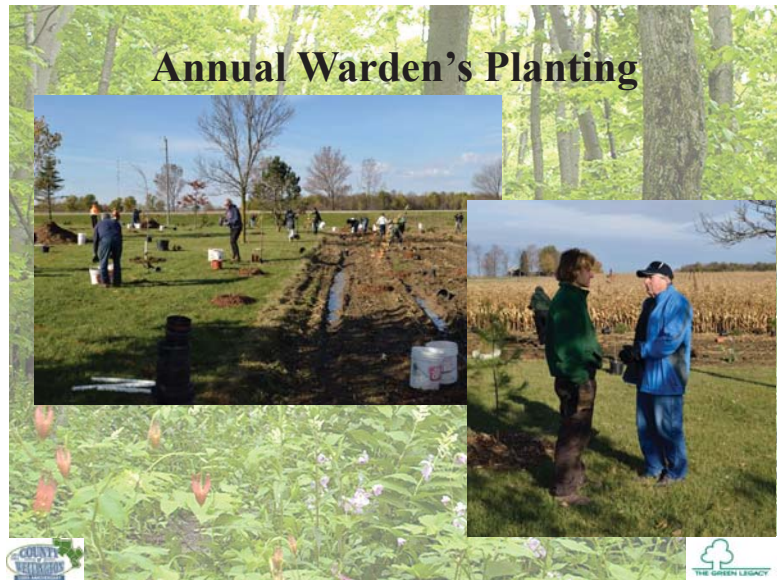




## Gold School's



## Annual Warden's Planting



## The County of Wellington's Green Legacy Tree Nursery



Planting Trees Today for a Healthier Tomorrow

"The significant problems we have cannot be solved at the same level of thinking with which we created them."  
 Albert Einstein

## Tree Cover

- Minimum Tree cover (Env. Can.) 30%
- Wellington County \_\_\_\_\_ 17%
- Mapleton Township \_\_\_\_\_ 10%
- Some areas \_\_\_\_\_ 3-4%

## Norfolk Blow Sands







**Norfolk County,  
Ontario, 1907**



**Normandale, ON,  
1906**

**Prince Edward  
County, 1911**

**Green Legacy Tree Nursery**  
*A Community Nursery*

**Operating Budget \$650,000**  
**Capital expenditures \$1.5million**






**Green Legacy Tree Nursery**  
*A Community Nursery*




**Green Legacy Tree Nursery**  
*A Community Nursery*




**Green Legacy Tree Nursery**  
*A Community Nursery*



160,000+ Seedlings per Year



10,000+ Container Stock per Year



University of Guelph  
Elm Recovery Programme





## Trees For Mapleton



## Trees For Mapleton



## How Windbreaks Work

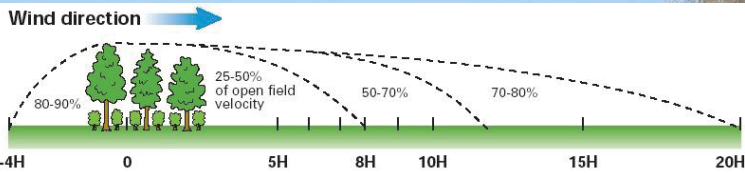
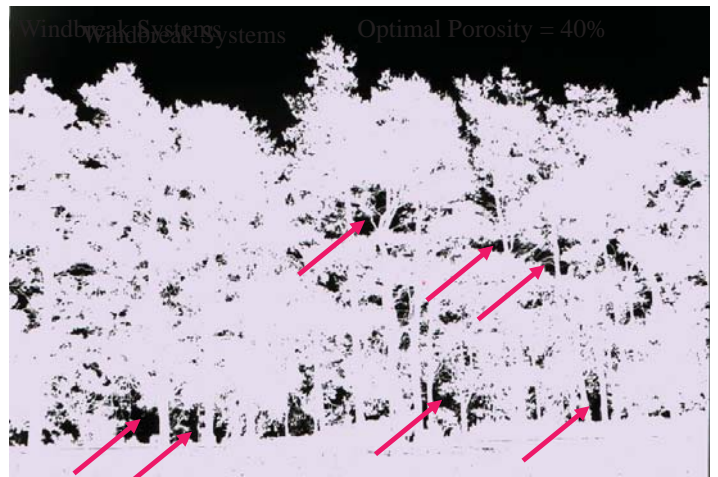
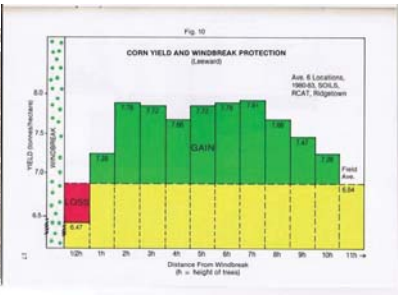


Figure 1. Zones of reduced wind velocity downwind of barrier as percentage of open field velocity. Vertical scale exaggerated.



## Living Snow Fence Benefits



Studies estimate--for each dollar invested There is a cost savings of \$17.00 for the municipality

Source--Minnesota Dept. of transportation



## Snow Blowing in Mapleton









# Community Seed Collecting





# KEEPING THE FOREST IN THE FOREST CITY Urban Forest Strategy Update

Presentation to TFAC  
June 1, 2016



## Urban Forest Strategy Update

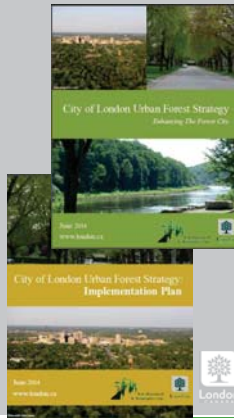
- Scope/Purpose of the Urban Forest Strategy
- Tree Canopy Cover Overview
  - How was it calculated
  - What is it now
  - How were tree canopy cover targets set
- Resources – Staffing and Budget
- Priorities and Major Initiatives
- Questions



## Scope and Purpose

### The Strategy answers the following 4 questions

1. What have we got?
2. What do we want?
  - Become one of the greenest cities in Canada (London Plan)
  - A healthy, diverse and extensive urban forest for today and the future
  - The tree canopy target is the fundamental first step
  - Residents have told us what is important to them
3. How are we going to get there?
4. Are we getting what we want?



## Scope and Purpose

- Achieving the tree canopy cover targets requires a paradigm shift in how the urban forest is viewed and managed
- It will require ALL of the following:
  - Policy changes
  - Ordinance/by-law changes
  - Increased staff and program levels
  - Improved practices
  - Stewardship
  - Partnerships/collaboration
  - Engagement
- These are all links in the chain – we can't cherry-pick which ones to support



## Scope and Purpose

There are 4 Guiding Principles – Links in the Chain to achieve London's Vision:

1. Protect the existing trees because the trees that are in the ground now will provide most of the canopy cover in 20 years
2. Maintain and Monitor the structure, function and value over time
3. Plant More and Enhance the Urban Forest where possible
4. Engage the Public because ¾ of all trees are on private property and all residents are stakeholders in our urban forest



## Tree Canopy Overview

### How was it calculated

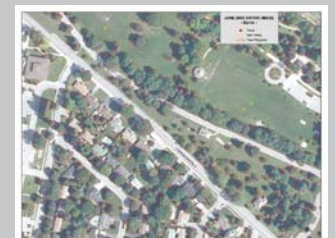
**2008 – 24.7%**

- 29,500 random points for the calculation
- Canopy polygons used for the maps



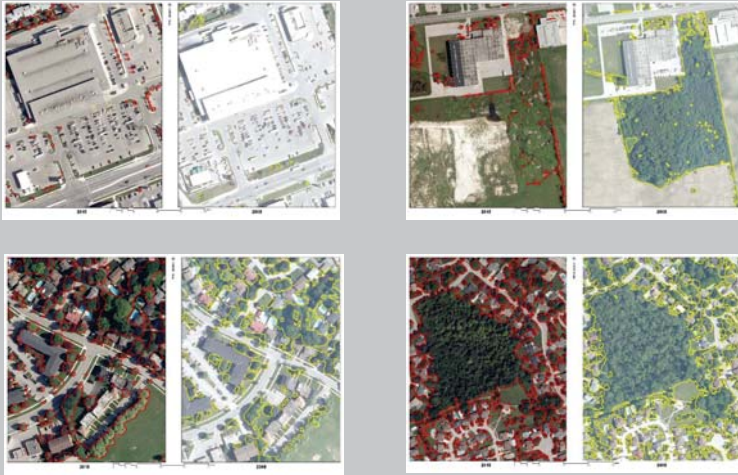
**2016 – Estimated @23%**

- Canopy polygons due to more precise photography and improved mapping technology
- Will have more accurate number this fall once analysis is completed





## Tree Canopy Overview



## Tree Canopy Overview



## Tree Canopy Overview

### How Tree Canopy Cover Targets Were Set

- Detailed in the PEC Report dated August 26, 2014
- Very challenging considering the amount of information available and uncertainties around tree growth, mortality, insect and disease impacts, rate and type of development etc.
- Available information about the state of the urban forest
- Review of upward and downward pressures on sustainability of the forest
- Stakeholder input
- Ability to develop and deliver a program based on existing and limited anticipated budget and resources
- Recognized that the cost to achieve each additional % canopy as you approach achieving the them requires and exponential increase in resources - the first few % increases are much easier and cheaper to achieve than the last few



## Resources

### Staffing

- 24.6 FTE's directly in Forestry
- Additional support from other Sections and Divisions like E&PP, Planning Services, Development Services that either lead initiatives or support existing programs



## Resources

### Forestry Annual Budget

#### 2015

Total Operating - \$3.2M

Total Capital - \$1.2M

#### 2016

Total Operating - \$3.4M

Total Capital - \$3.2M

Includes \$200K for tree maintenance and \$1.8M in reserve fund for additional tree planting in support of the UFS



## Priorities and Major Initiatives

**Major initiatives** are identified in our Planning Services Corporate Work Plan – all of these are identified in the UFS Strategy Implementation Plan as high priorities in the short and medium terms

- Tree Conservation By-law - 2016
- Boulevard Tree Protection By-law - 2016
- Tree Planting Strategy – 2016
- Tree Canopy Cover Analysis - 2016
- Asian Long-horned Beetle Report – 2016
- Integrated Pest Management Strategy – 2017
- i-Tree Eco (UFORE) re-analysis – 2017/18





## Priorities and Major Initiatives

### Other major initiatives and projects for the next two years include:

- Establishing tree canopy cover targets for different place types
- Development and revision of various policies, by-laws and improving practices in support of the OP and UFS
- Refining estimates for tree loss, survival, and growth
- Increased enforcement of tree by-laws
- Reducing the tree maintenance cycle
- Increase planting
- Community engagement
- Updating the tree inventory and implementation of the CMMS system



## Questions?

