

| | |
|--|--|
| | |
|--|--|

| | |
|-----------------|---|
| TO: | CHAIR AND MEMBERS STRATEGIC PRIORITIES AND POLICY COMMITTEE MEETING ON FEBRUARY 18, 2016 |
| FROM: | LARRY PALARCHIO DIRECTOR, FINANCIAL PLANNING AND POLICY |
| SUBJECT: | 2016-2019 BUDGET – PUBLIC INPUT |

| |
|------------------------|
| RECOMMENDATIONS |
|------------------------|

That, on the recommendation of the Director, Financial Planning and Policy, this interim report **BE RECEIVED** for information.

| |
|-------------------|
| BACKGROUND |
|-------------------|

This report captures public input and feedback received on the 2016-2019 Multi-Year Budget up to **February 16, 2016**.

Includes public input and feedback received through the following channels:

- 2015 Citizen Satisfaction Survey
- ‘Build a Budget Workshops’ (hosted on January 16 and January 20, 2016)
- www.buildabudget.ca
- E-mails sent to budget@london.ca
- Twitter – tweets sent to @CityofLdnOnt or #ldnbudget15, and Facebook posts on the City of London Facebook page

It is important to note that Council will receive a third report on public input prior to February 24, 2016 budget deliberations. This will consist of feedback from City of London Advisory Committees as per resolution dated January 13, 2016.

The other component of that same resolution has been completed with civic administration accomplishing 5 more (then originally scheduled) ‘Budget Open Houses’ for a total of 10 extra hours answering questions for the public.

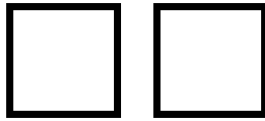
Below are summaries and highlights from each of the City of London’s budget engagement vehicles:

2015 CITIZEN SATISFACTION SURVEY (conducted between June 4 -14, 2015):

Administration would like to remind members of Council of the 2015 Citizen Satisfaction Survey (originally tabled on August 31, 2015 – SPPC) as it recognizes some vehicles of budget input can be informal in nature and this survey provides a suitable, balanced, and formal lens for members of Council.

Highlights from this survey include:

- Significant increase in the number of residents who cite development and infrastructure issues as issues that should receive the greatest attention from the City (21%, up from 6% in 2013).
- Transportation (13%) and economic development are also seen as a top priority, but



significant drop in the number who mention the latter issue (13%, down from 38% in 2013)

- Large majority (80%) believe they are getting good value for their tax dollars based on programs and services they receive from the City, and a growing number say they receive very good value (21%, up from 3% in 2013). Moreover, this latter figure now on par with National Norm (18%).
- When presented with options, most residents prefer increasing taxes (54%) to cutting services (29%). There is some preference for increasing taxes to maintain rather than enhance or expand services (32% vs. 23%).

The 2015 Citizen Satisfaction Survey **is attached** in its entirety.

‘BUILD A BUDGET WORKSHOPS’ (hosted on January 16, 2016 and January 20, 2016)

The ‘Build a Budget Workshops’ invited Londoners to explore the 2016-2019 Multi-Year Budget in an environment where they could learn, have an opportunity to ask questions and provide their input. The workshop setting also provided a unique environment for bringing community members together for multi-party discussions and mutual education.

In total, approximately **40 members** of the community attended the ‘Build a Budget Workshops’ (25 at the January 16th session; and 15 at the January 20th session), as well as members of Council, the Senior Leadership Team and other City staff.

There were 2 main stations for residents to provide their input. Station descriptions and results are highlighted below:

- 1) **Priority Poll** – asked residents to identify which 3 services are most important to them:
 - Transportation Services
 - Parks, Recreation & Neighbourhood Services
 - Social & Health Services
- 2) **Strategic Investments** – asked residents to identify which Strategic Investments are most important to them over the next 4 years:
 - Rapid Transit Implementation Strategy (Business Case #6)
 - Thames Valley Corridor Plan (Business Case #4)
 - Urban Forest Strategy (Business Case #3)
 - Back to the River Project (Business Case #18)
 - Dundas Place (Business Case #22)
 - Winter Maintenance Strategy (Business Case #17)
 - London Homeless Prevention and Housing Plan/ London Homeless Prevention System Implementation Plan (Business Case #16)
 - Mental Health and Addictions Strategy (Business Case #15)
 - Establish Public Engagement as an Area of Focus (Business Case #10)
 - Service London Implementation Plan (Business Case #11)

ON-LINE BUDGET SIMULATOR (www.buildabudget.ca)

For the fourth year in a row, Civic Administration has used www.buildabudget.ca as a platform for budget engagement and education. This website provides Londoners with a unique opportunity to learn about the proposed 2016-2019 Multi-Year Budget.

It allows Londoners to enter their assessed property value and get a breakdown of how their property tax dollars are distributed to all the programs and services provided by the City of London.

| | |
|--|--|
| | |
|--|--|

Londoners can use sliding scales and/or yes/no widgets to showcase what they would like to adjust or support over the next four years.

From January 11, 2016 to February 16, 2016, www.buildabudget.ca has had **546 visitors, with 197 visitors submitting responses** (293 visitors submitting 96 responses at date of first report submitted to SPPC on January 29, 2016).

When reviewing detailed results, Council should be aware of the following:

- The allocation displayed for each service is based on the average allocation over the next four years and is pre-populated with London average home price of \$221,000.
- When users put in their own assessed value these numbers change accordingly.
- The charts shown for each service displays % of respondents and % of allocation. Please note 100% is the allocation proposed by administration.
- Strategic Investments are presented seeking a yes/no response from users.

Public input gathered from www.buildabudget.ca is **attached** as **Appendix A**

OTHER VEHICLES

As noted above, Civic Administration has been capturing feedback and comments related to the 2016-2019 Multi-Year Budget through a variety of channels. E-mail inquiries and input were received through budget@london.ca and social media input was collected through Facebook at <http://www.facebook.com/LondonCanada> and Twitter at @CityofLdnOnt or #LdnBudget.

During the time period of December 23, 2015 – February 16, 2016 **#LdnBudget had 721 tweets generating 2,326,739 impressions** (549 tweets generating 1,963,535 impressions at date of first report submitted to SPPC on January 29, 2016).

Appendix B (attached) captures feedback received through these channels

| | |
|---|---|
| Prepared By: | Recommended By: |
| | |
| Jon-Paul McGonigle Business Planning Process Manager | Larry Palarchio Director – Financial Planning and Policy |

| | |
|--|--|
| | |
|--|--|

APPENDIX A

www.buildabudget.ca

Online Budget Consultation Report

For the period January 11 to February 16, 2016

Prepared by Open North for: City of London

546

Visitors

197

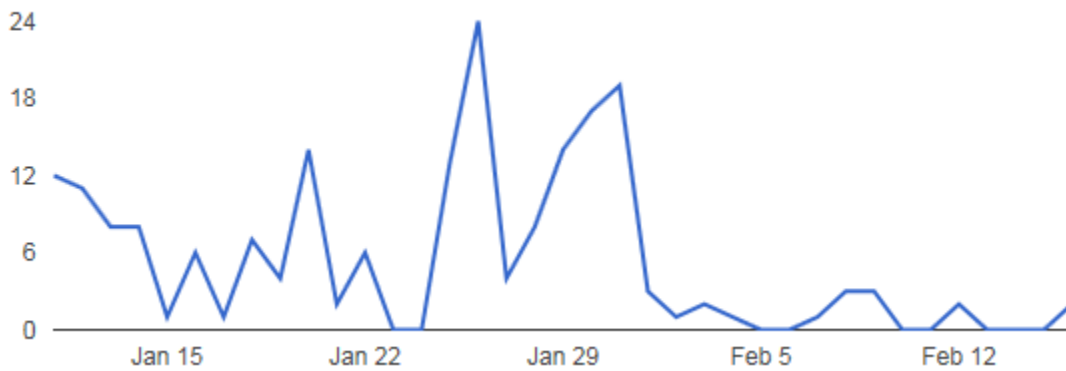
Responses

36.1% participation

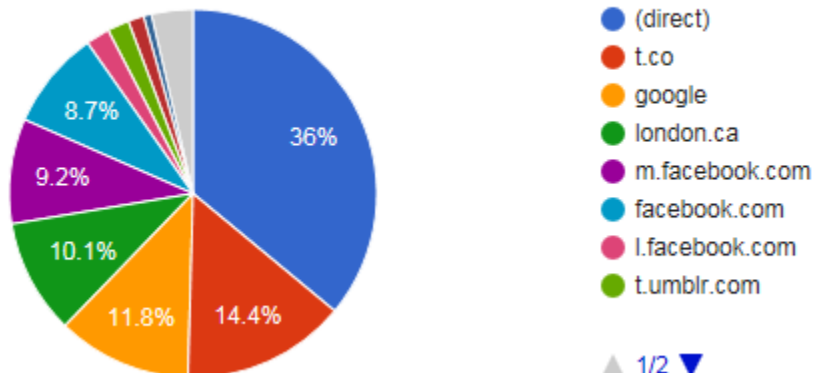
8 minutes

Median time to complete

Responses per day



Web traffic sources

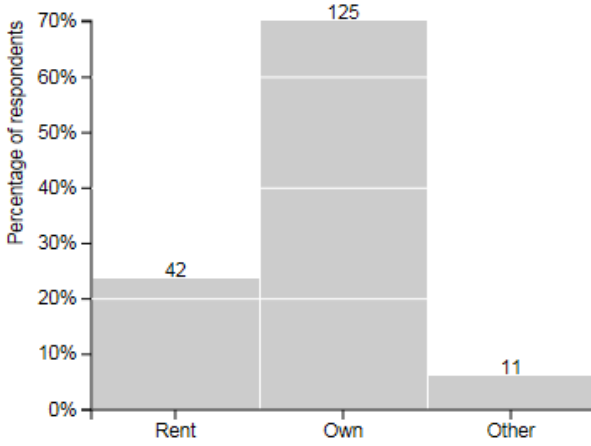


| | |
|--|--|
| | |
|--|--|

Responses for each question

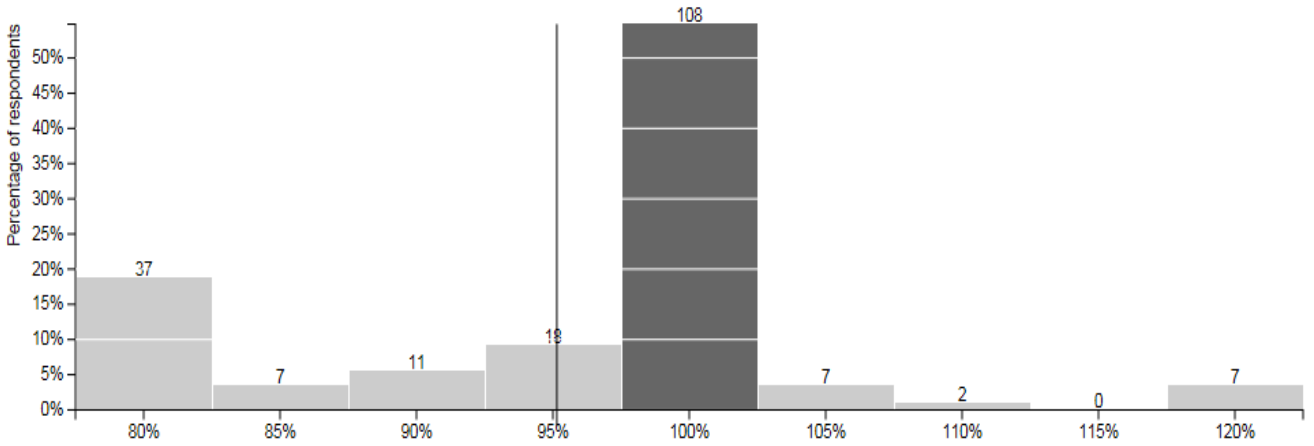
Your Housing

1

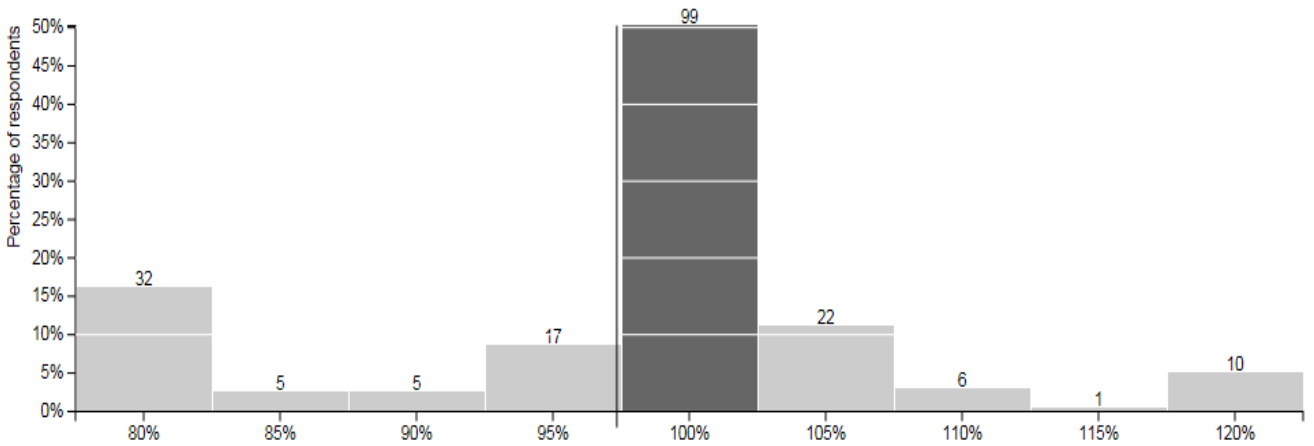


Culture

2 Centennial Hall

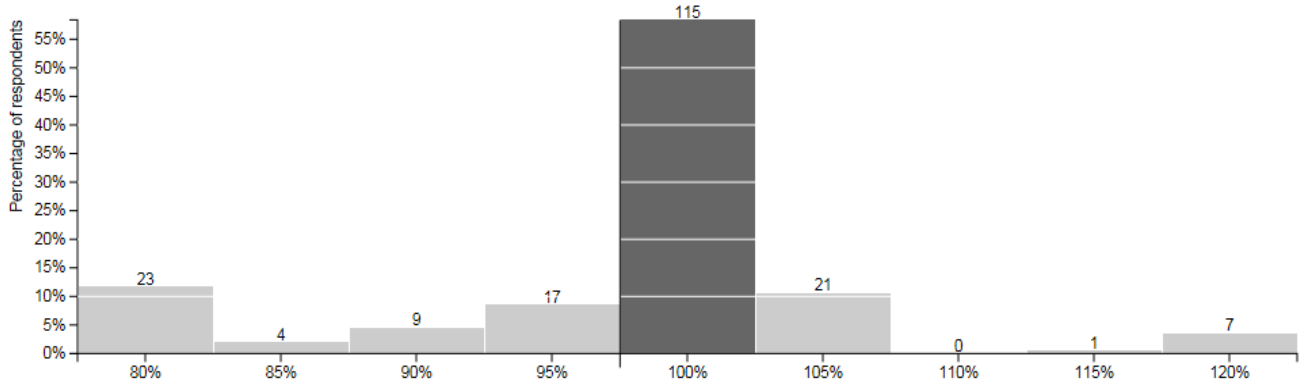


3 Arts, Culture and Heritage Advisory & Funding

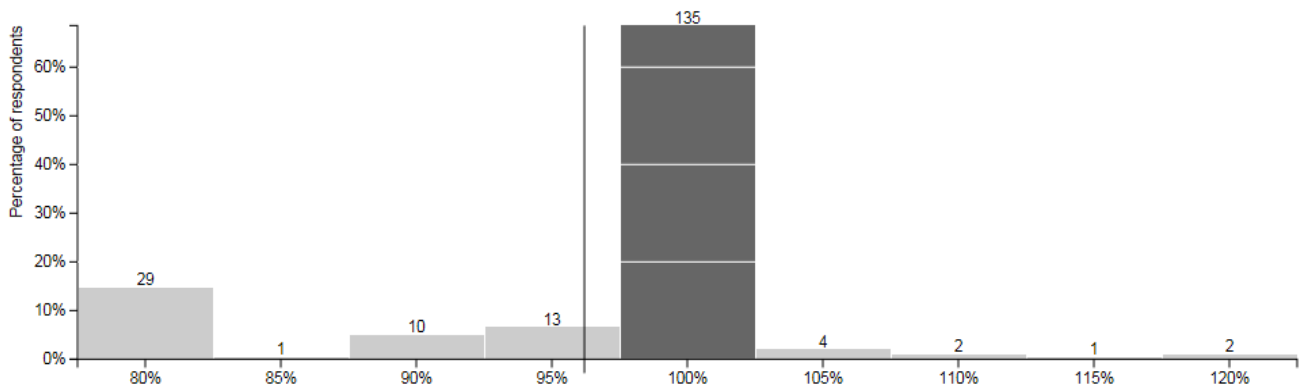




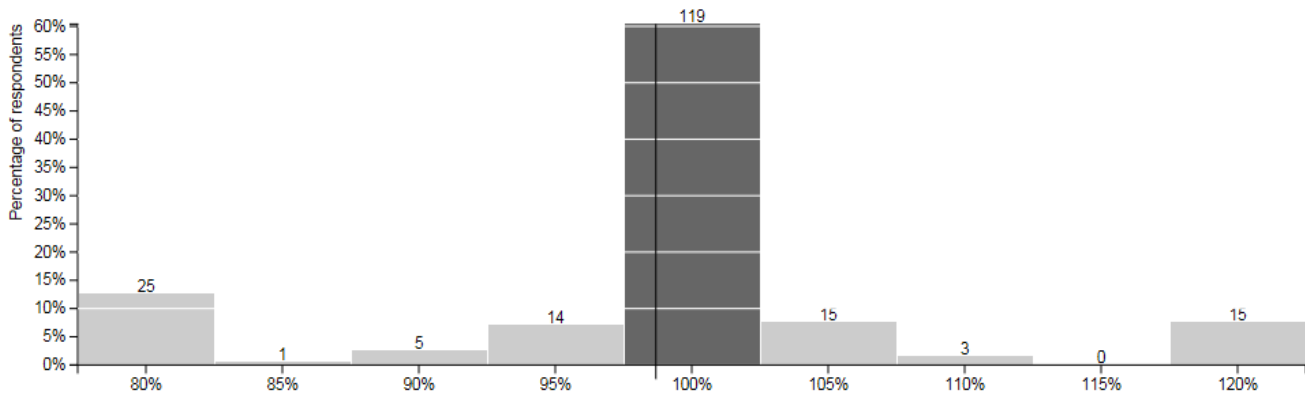
4 Museum London



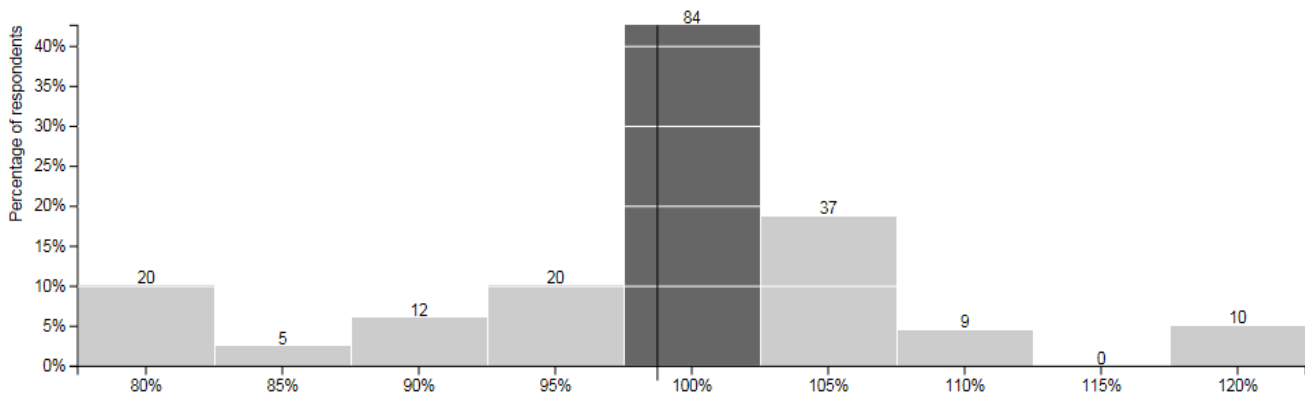
5 Eldon House



6 Heritage



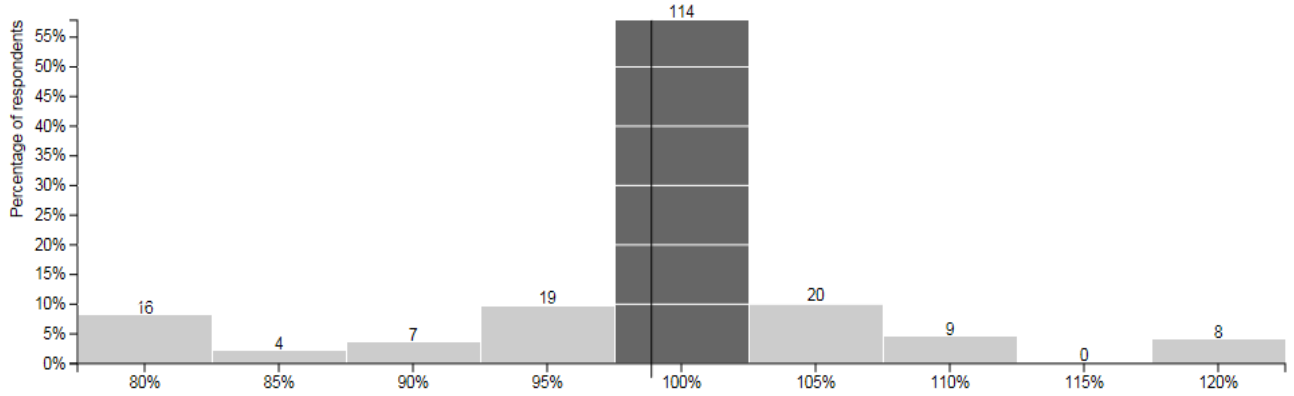
7 Library Services



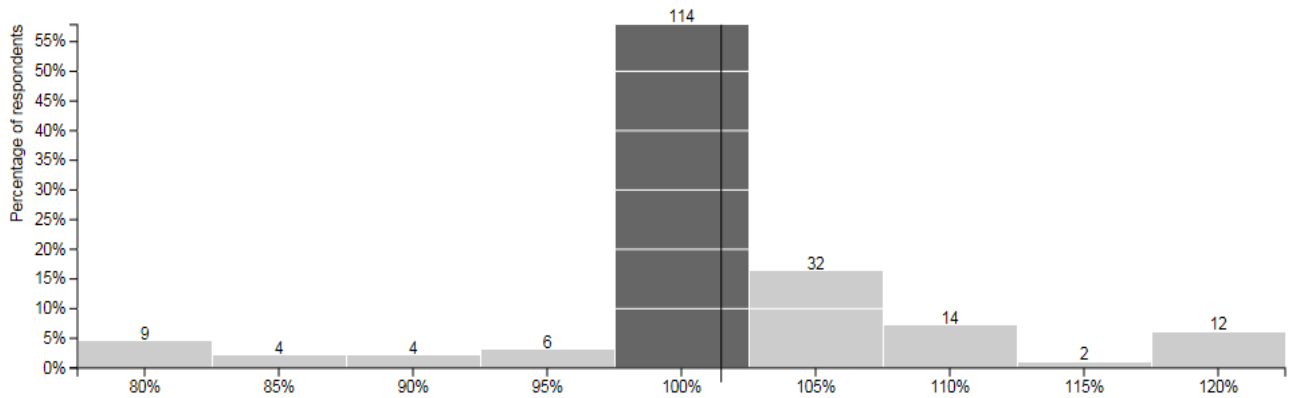


Economic Prosperity

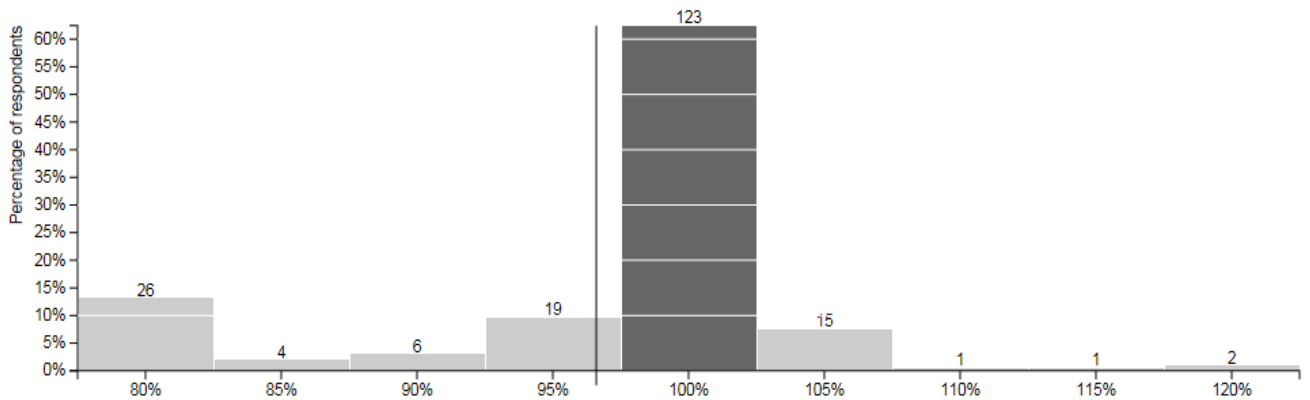
8 Business Attraction & Retention



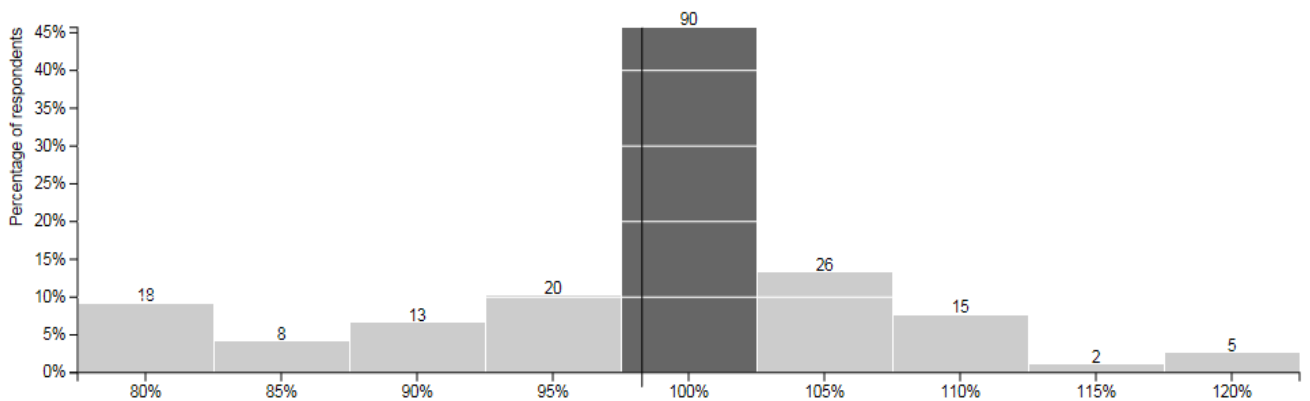
9 Community Improvement / BIA



10 Conventions, Meetings & Events

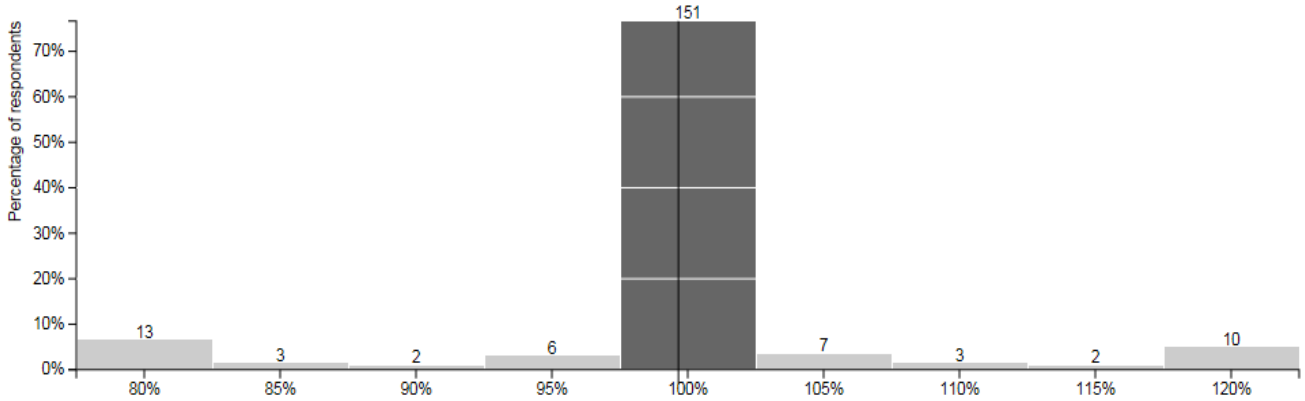


11 Tourism & Sports Attraction



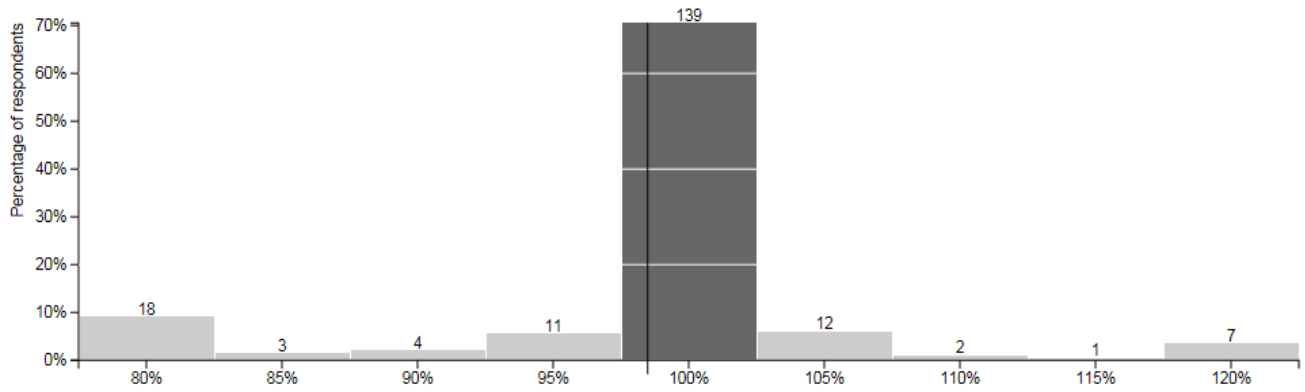


12 Covent Garden Market

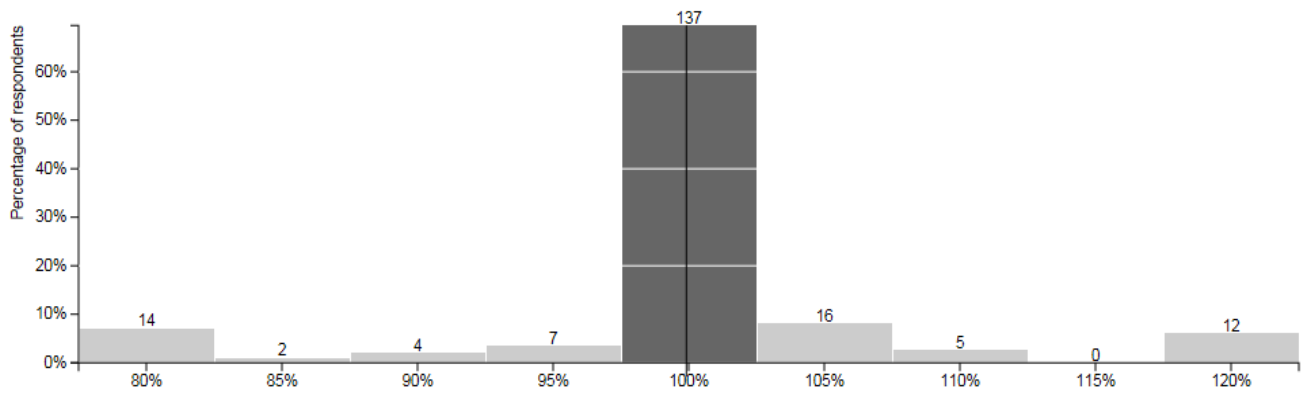


Environmental Services

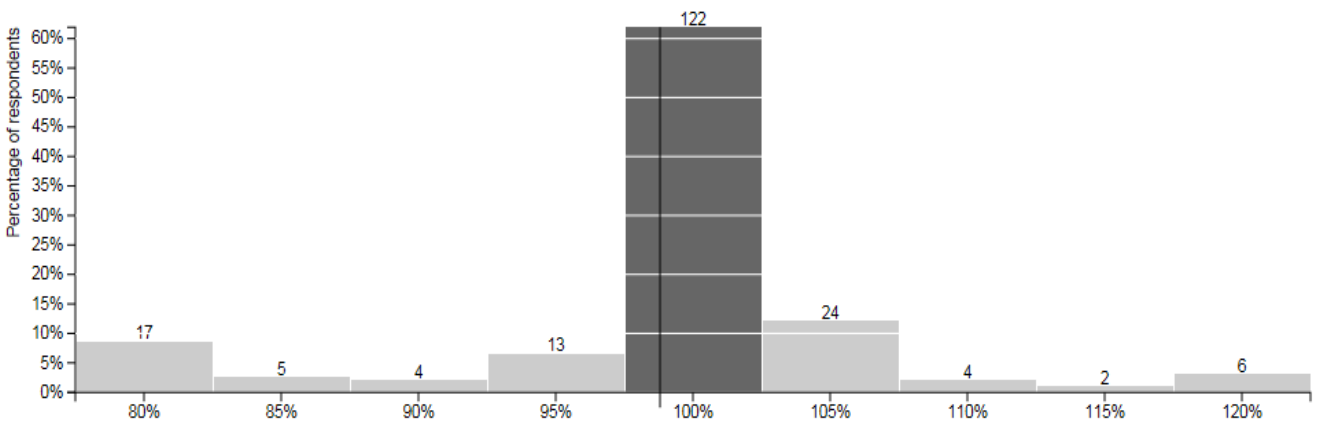
13 Kettle Creek Conservation Authorities



14 Lower Thames Valley Conservation Authorities

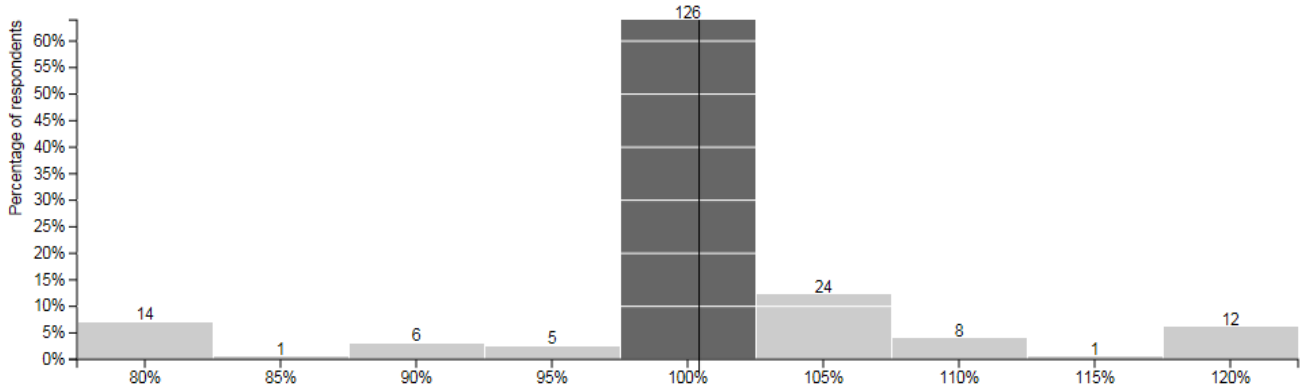


15 Upper Thames River Conservation Authorities

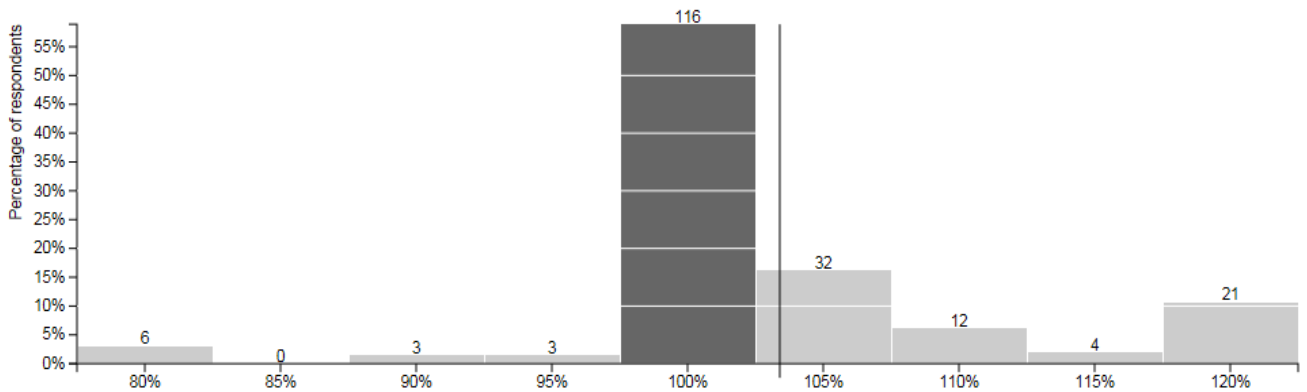




16 Environmental Action Programs & Report

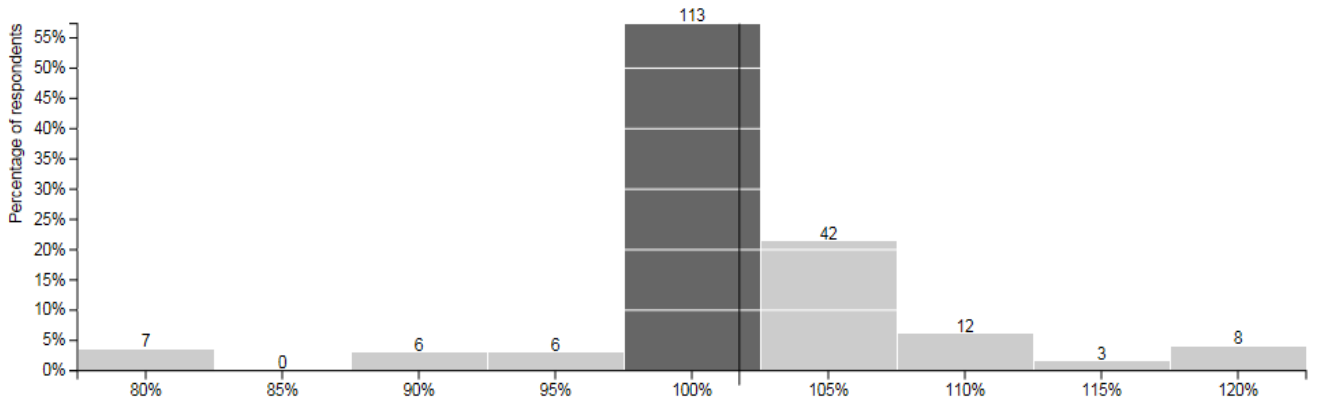


17 Garbage, Recycling & Composting

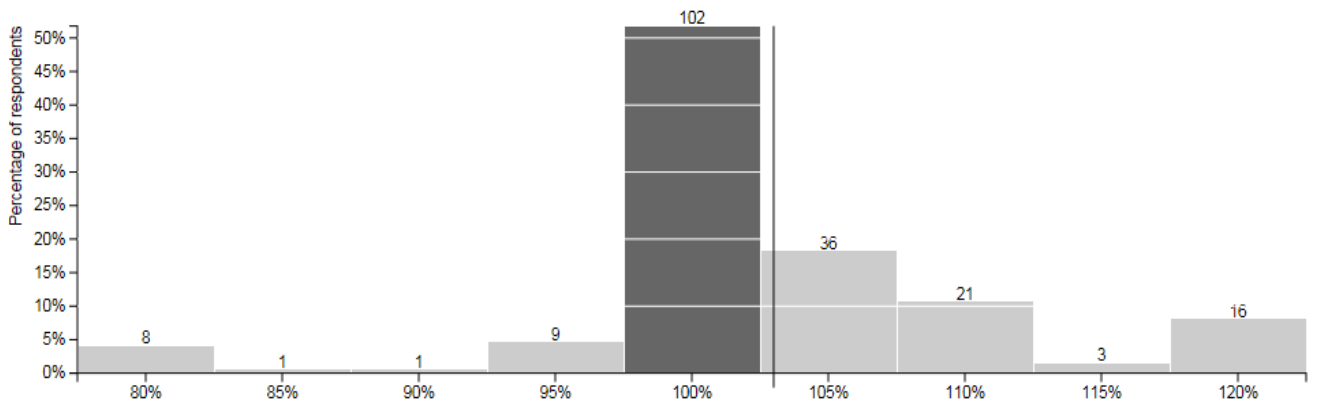


Parks, Recreation & Neighbourhood Services

18 Neighbourhood & Recreation Services



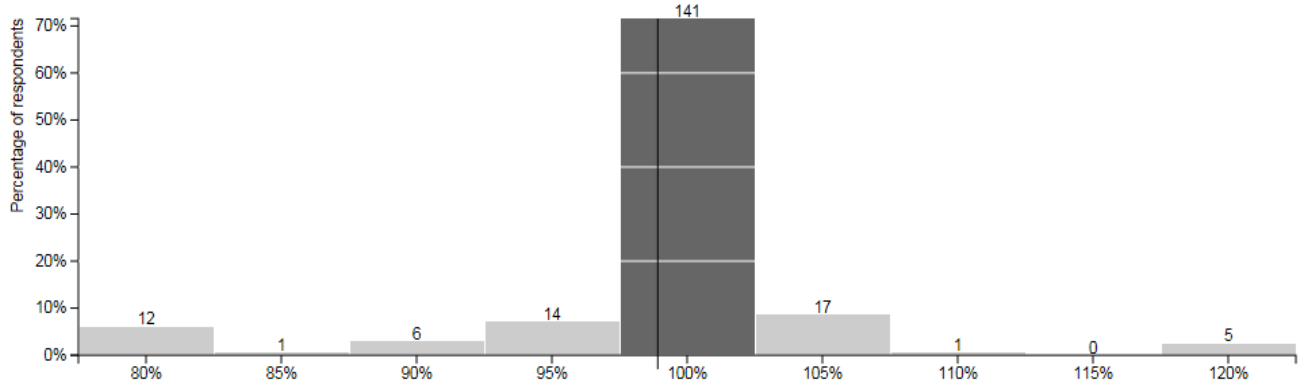
19 Parks & Urban Forestry



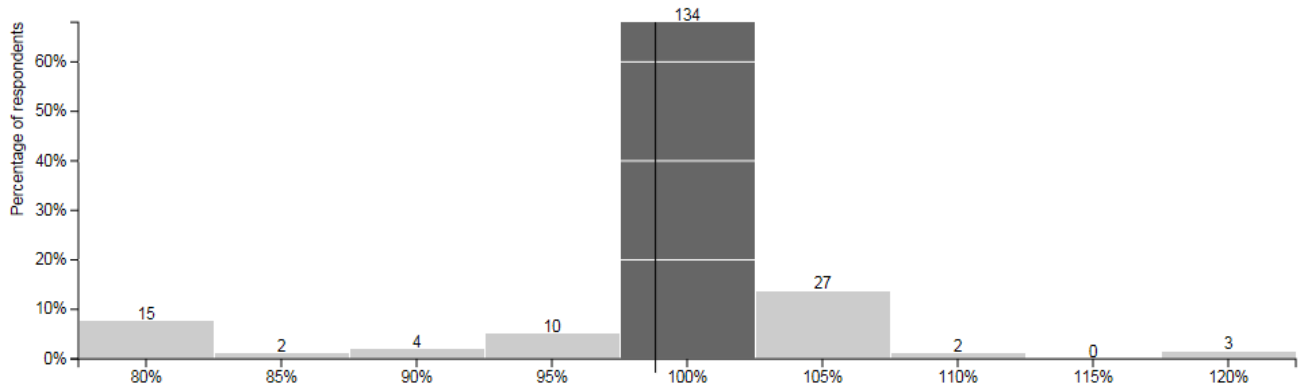


Planning and Development Services

20 Planning Services

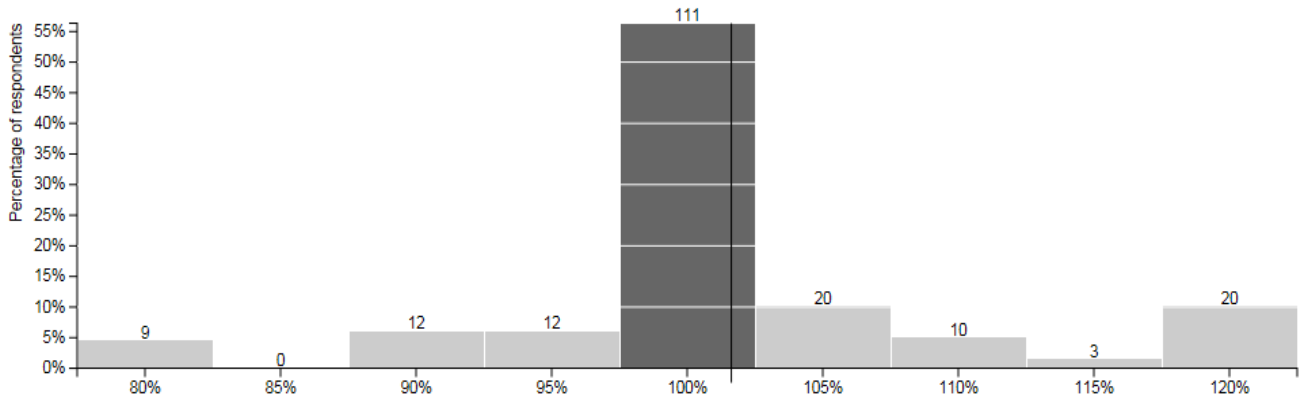


21 Development Services

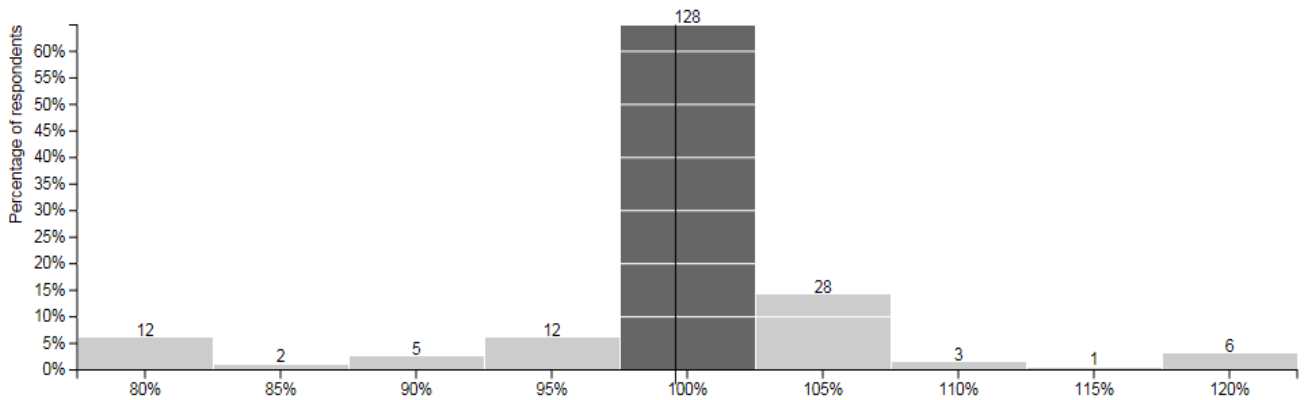


Protective Services

22 Animal Services

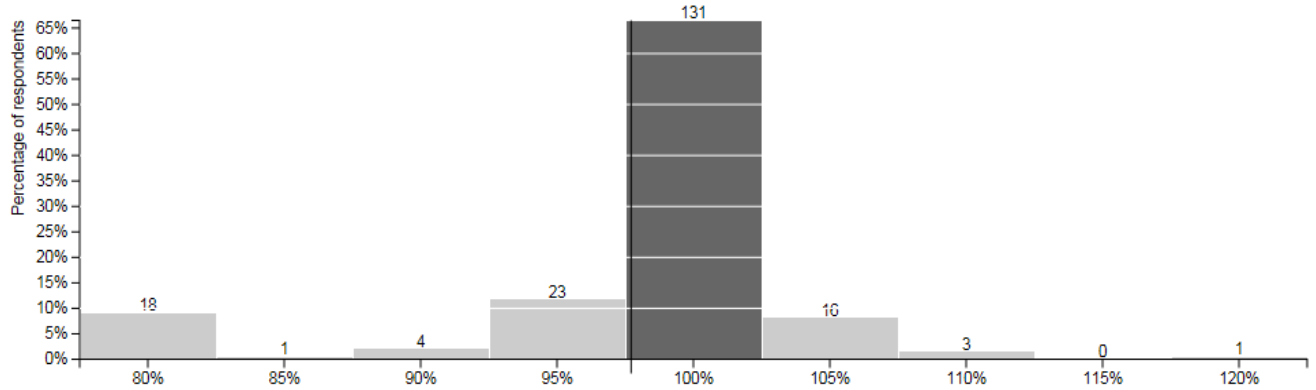


23 Bylaw Enforcement & Property Standards

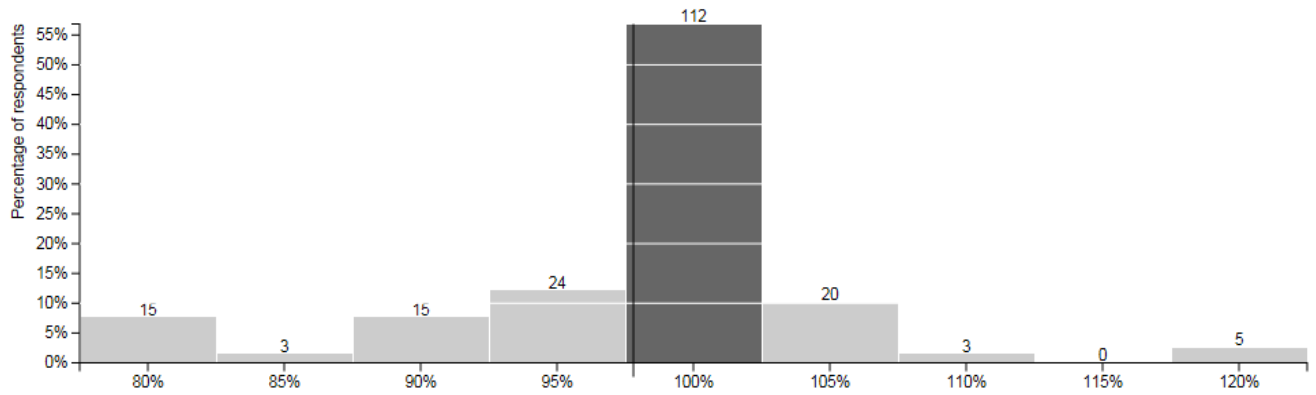




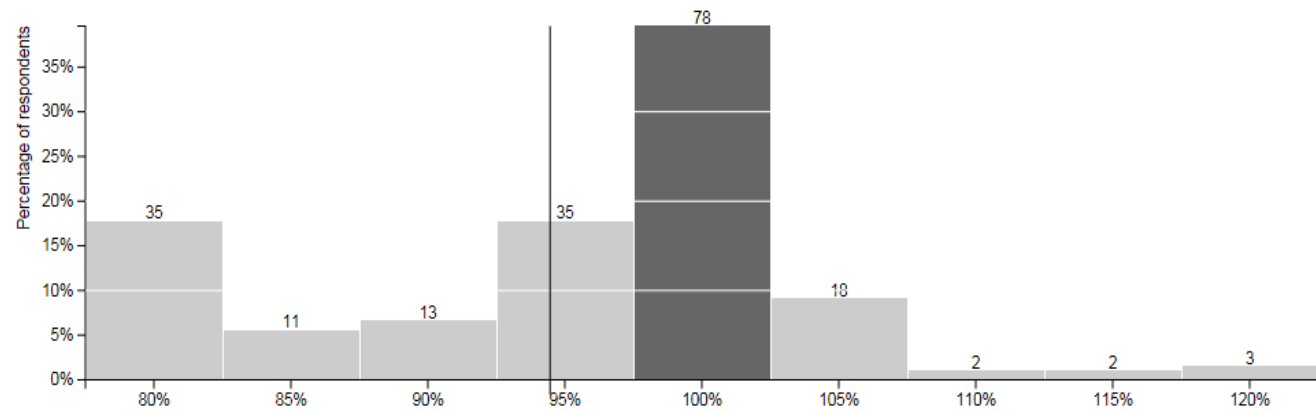
24 Corporate Security & Emergency Management



25 Fire Services

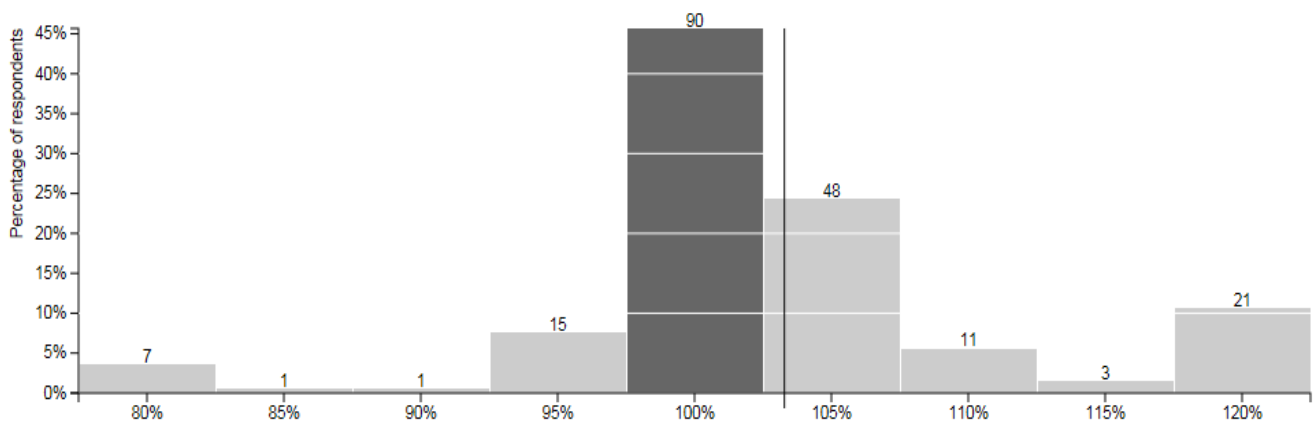


26 Police Services



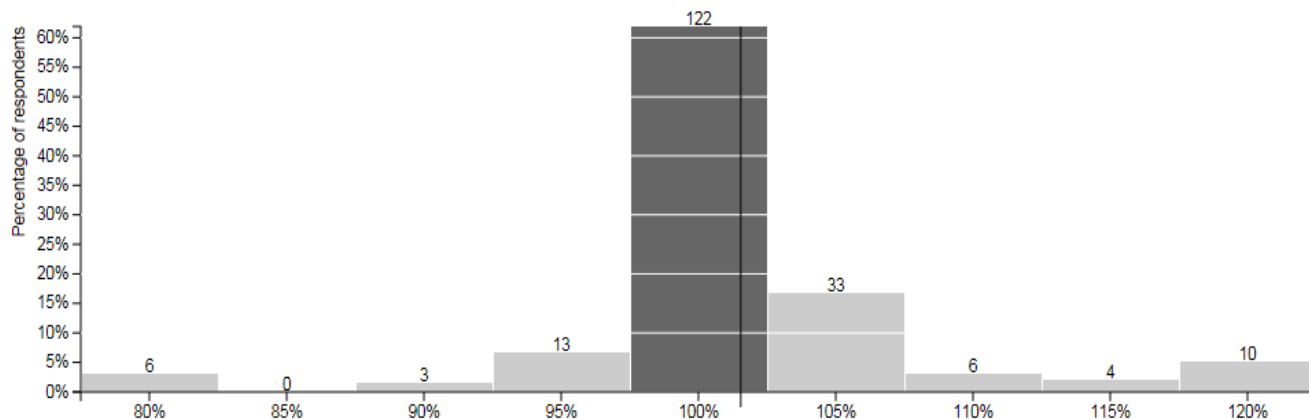
Social and Health Services

27 Social Housing

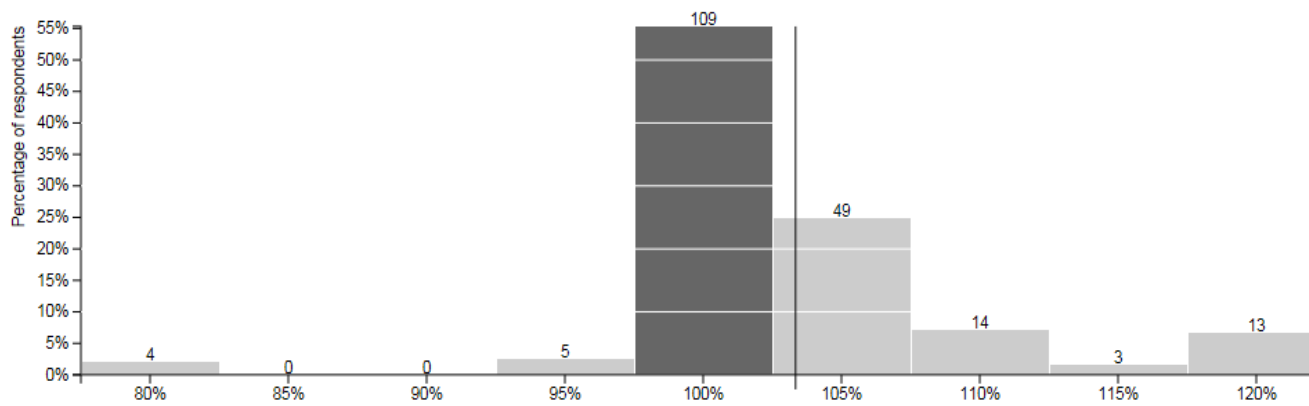




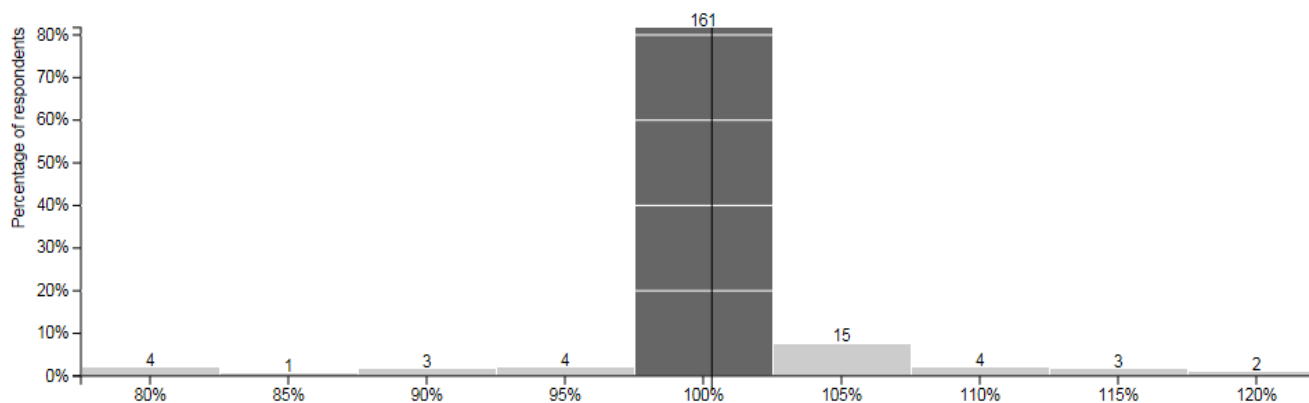
28 London & Middlesex Housing Corporation



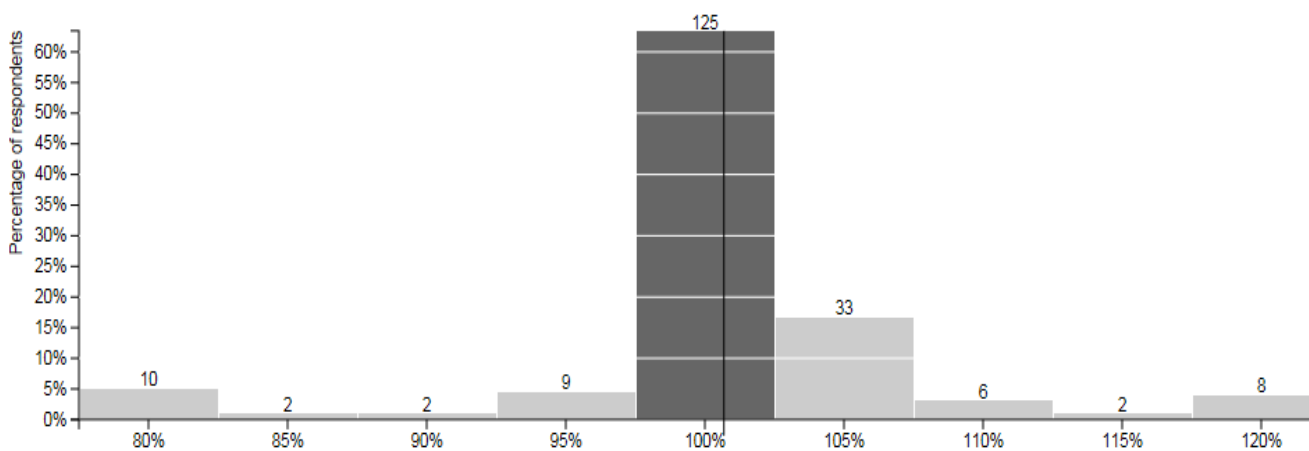
29 Long Term Care



30 Land Ambulance

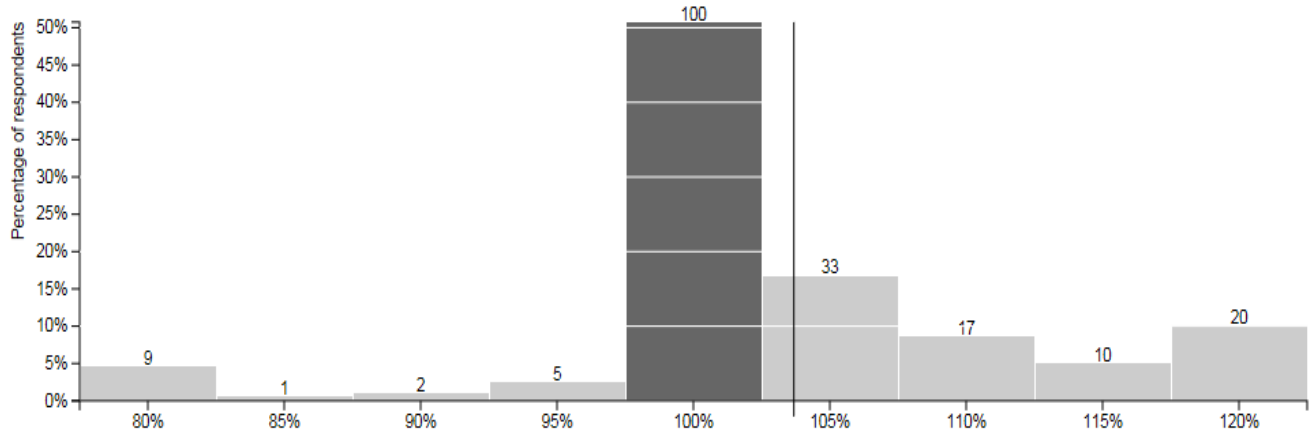


31 Middlesex-London Health Unit



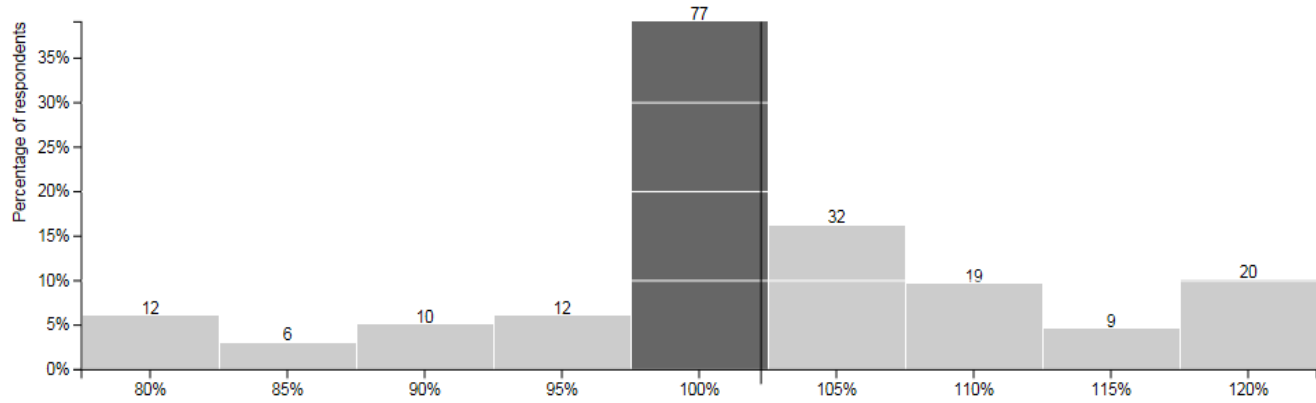


32 Social & Community Support Services

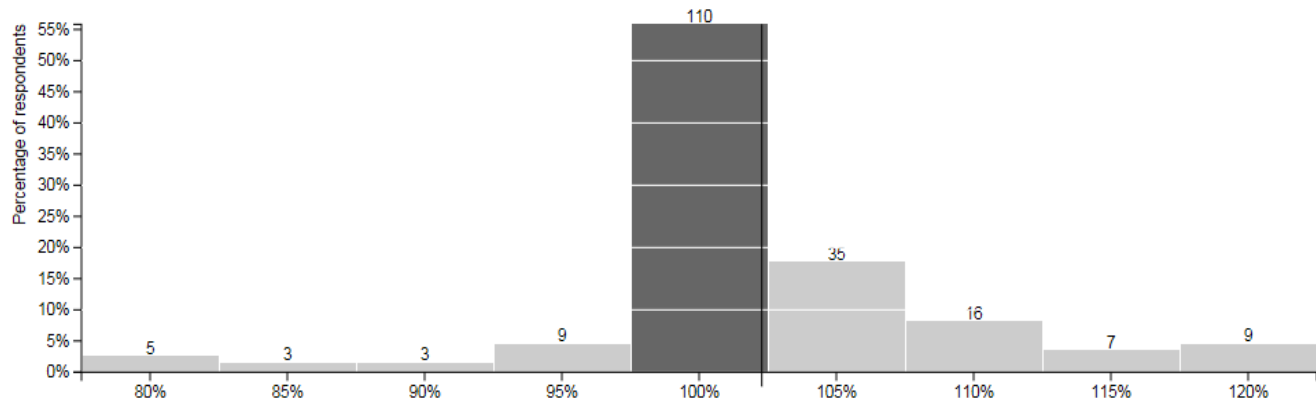


Transportation Services

33 Public Transit

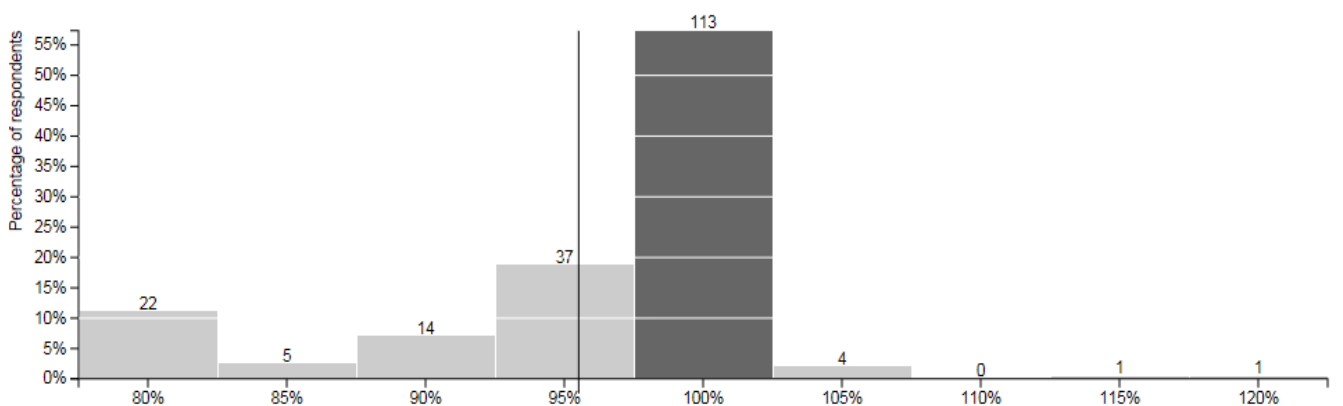


34 Roadways



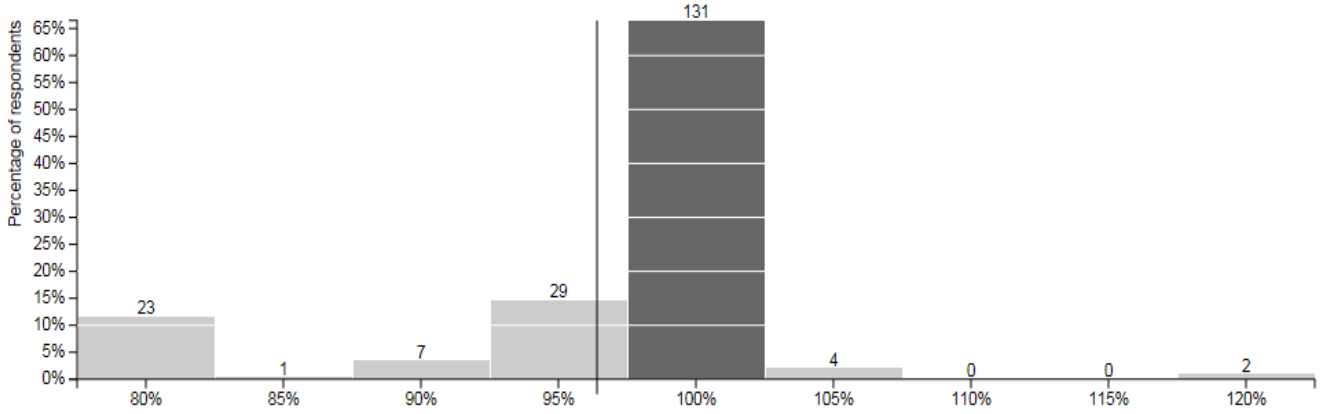
Corporate, Operational & Council Services

35 Corporate Services

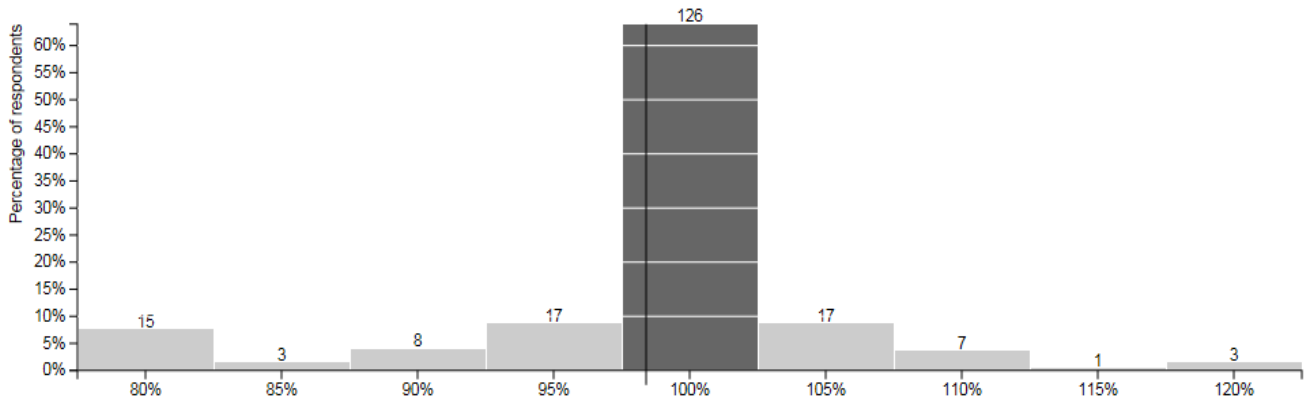




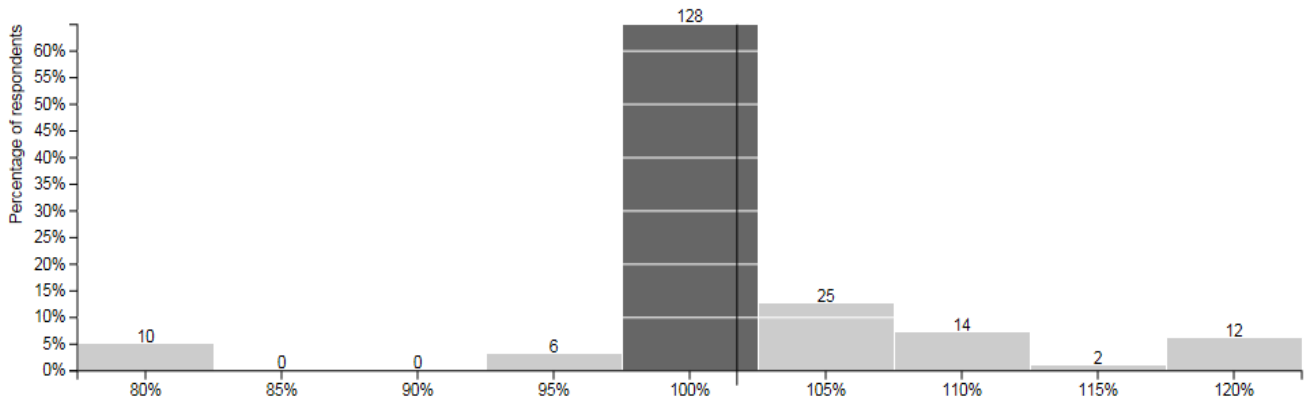
36 Corporate Planning & Administration



37 Council Services

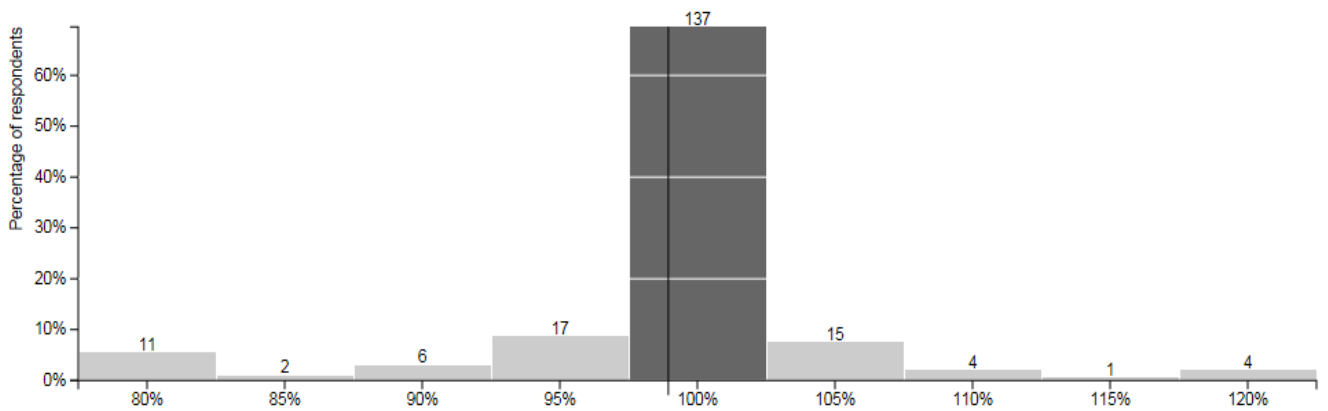


38 Public Support Services



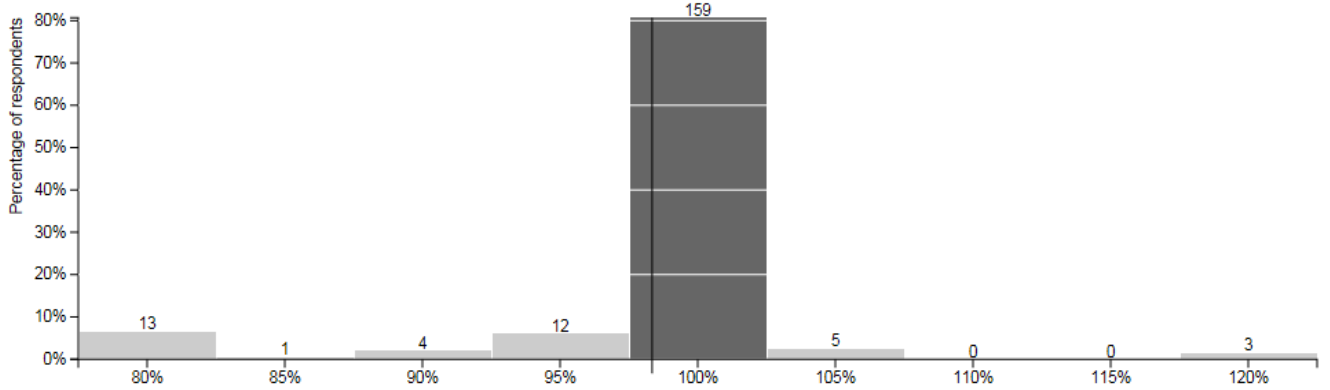
Financial Management

39 Capital Financing

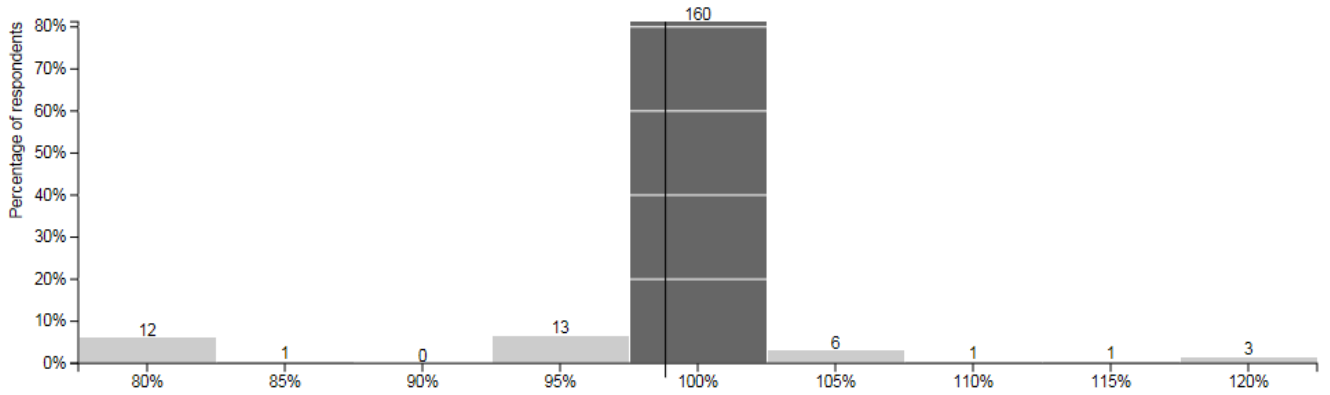




40 Other Related Financing



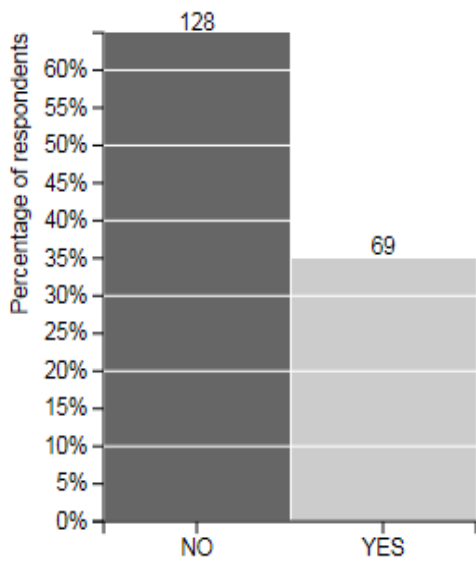
41 Finance



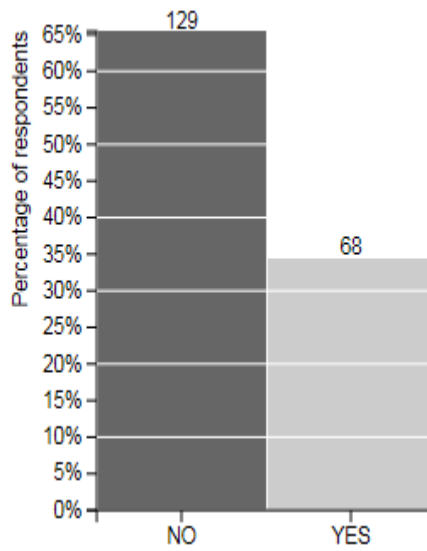
STRATEGIC INVESTMENTS

BUILDING A SUSTAINABLE CITY

43 Library's Ten Year Capital Plan

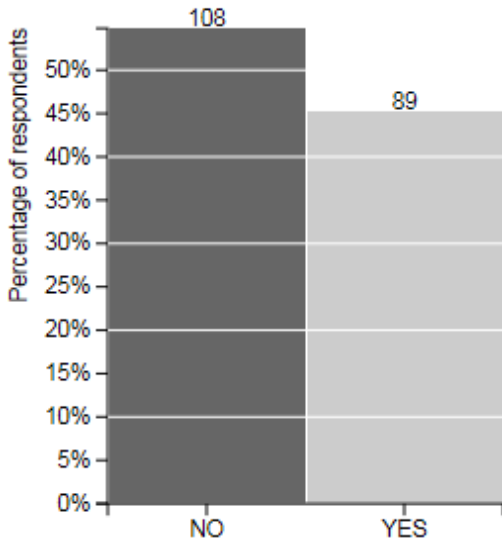


44 Road Map 2.0 – Road to Increased Resource Recovery and Zero Waste

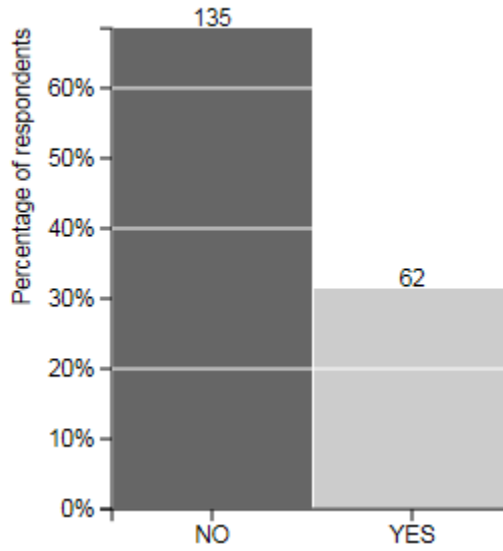




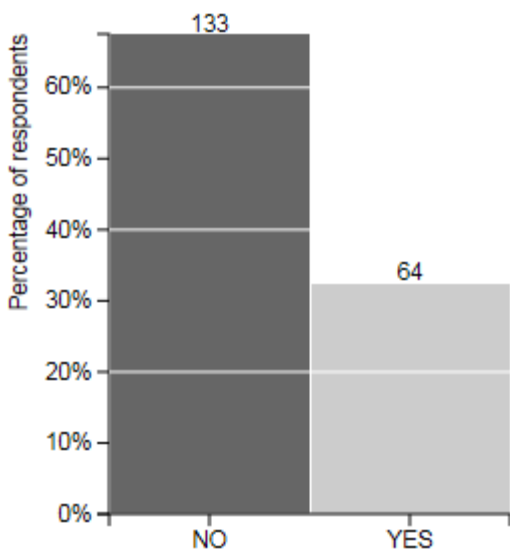
45 Urban Forest Strategy



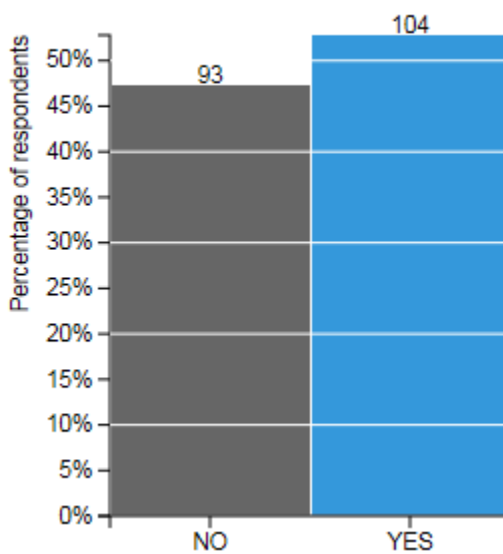
46 Thames Valley Corridor Plan



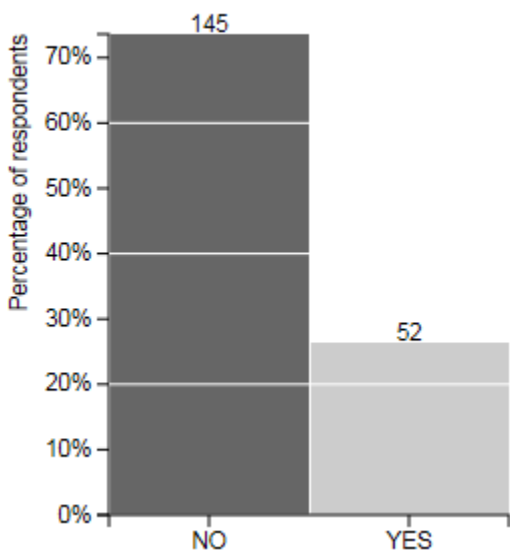
47 Road Safety Strategy



48 Rapid Transit Implementation Strategy



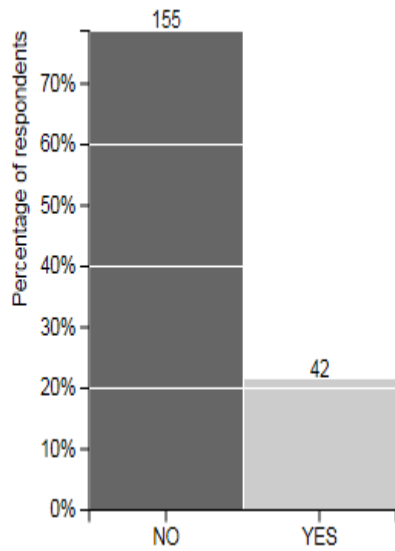
49 State of Infrastructure Report



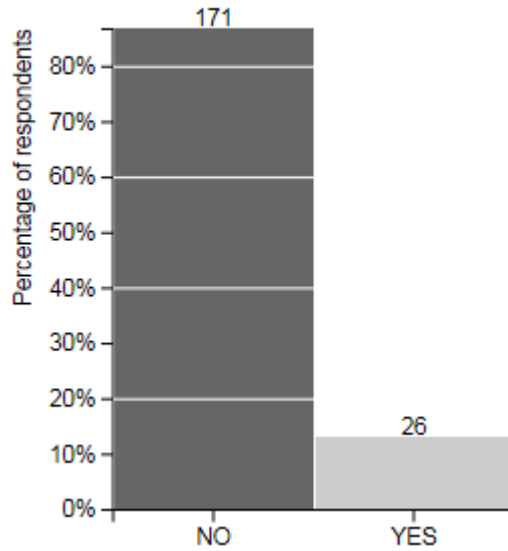


LEADING IN PUBLIC SERVICE

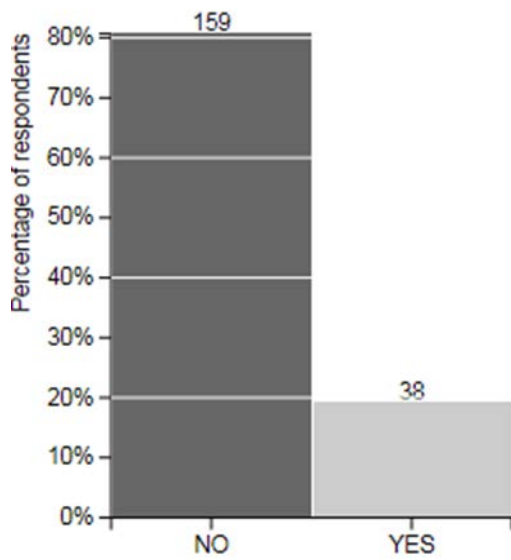
50 Garbage Collection – On-board Weighing and Tracking Technologies



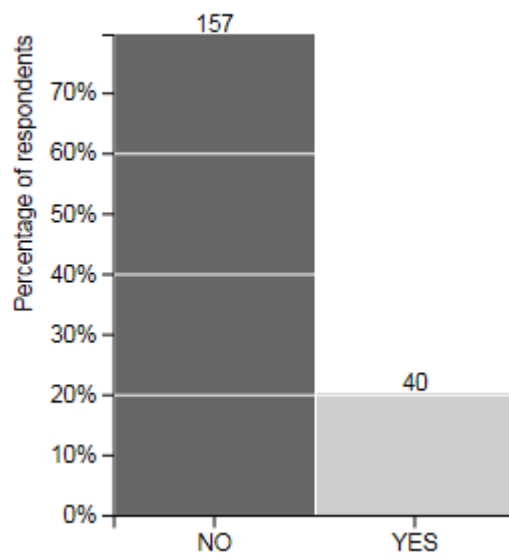
51 Technology/Amanda Software



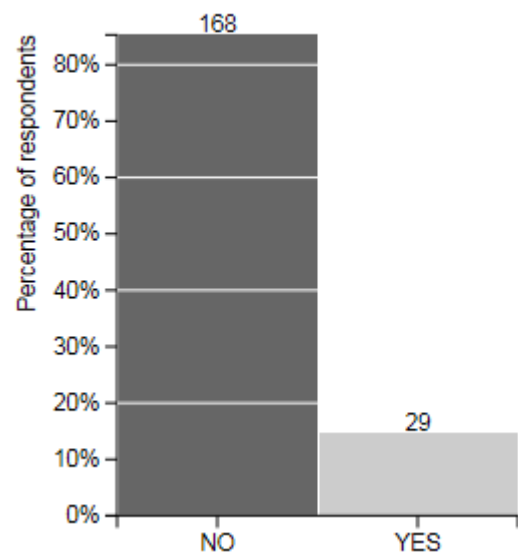
52 Establish Public Engagement as an Area of Focus



53 Service London Implementation Plan



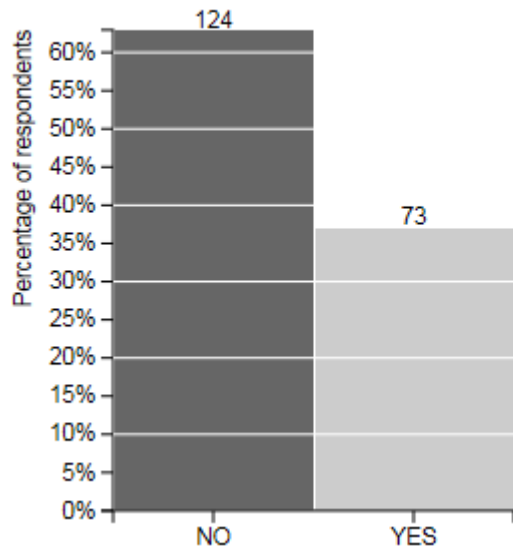
54 Computerized Maintenance Management System



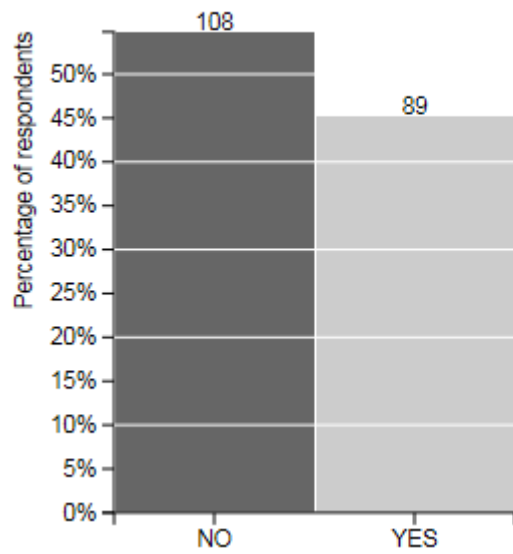
| | |
|--|--|
| | |
|--|--|

STRENGTHENING OUR COMMUNITY

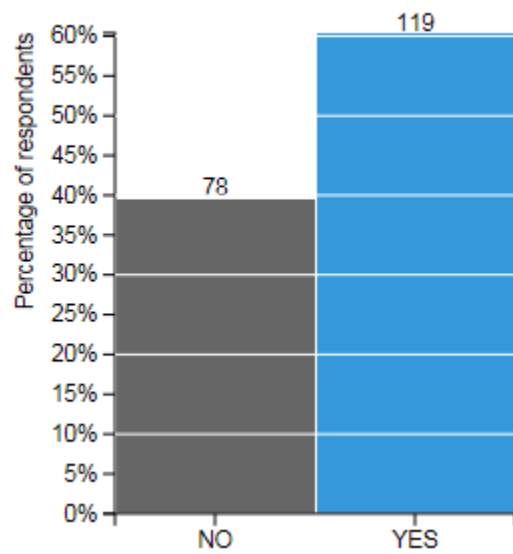
55 London Strengthening Neighbourhoods Strategy (LSNS)



56 Ontario Works Service Plan – Low Income Supports Enhancement

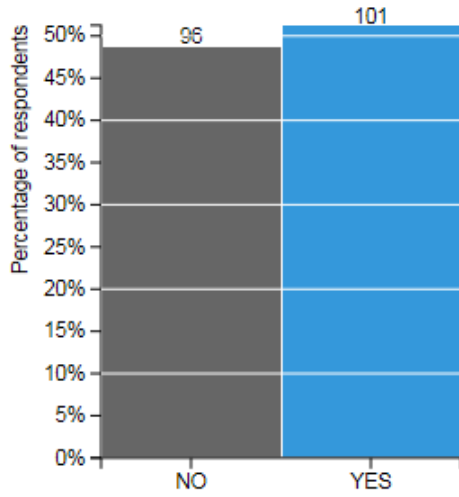


57 Mental Health and Addictions Strategy

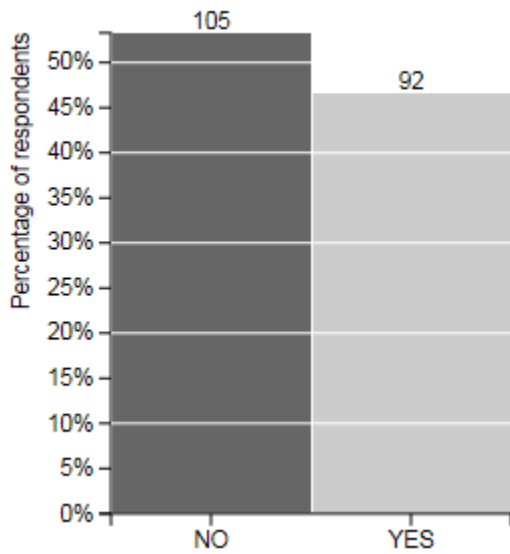


| | |
|--|--|
| | |
|--|--|

58 London Homeless Prevention and Housing Plan 2010-2024 2. London Homeless Prevention System Implementation Plan

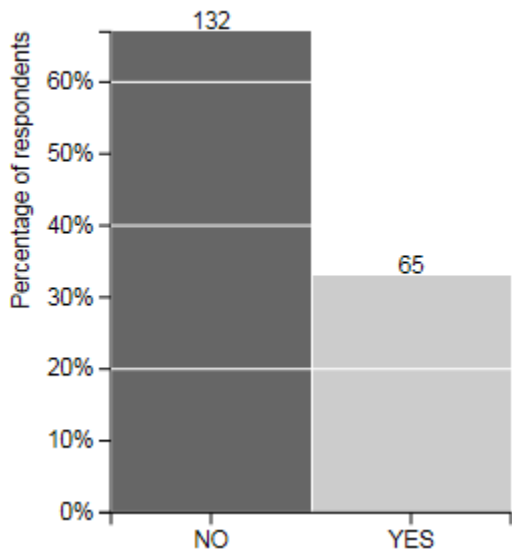


59 Winter Maintenance Strategy



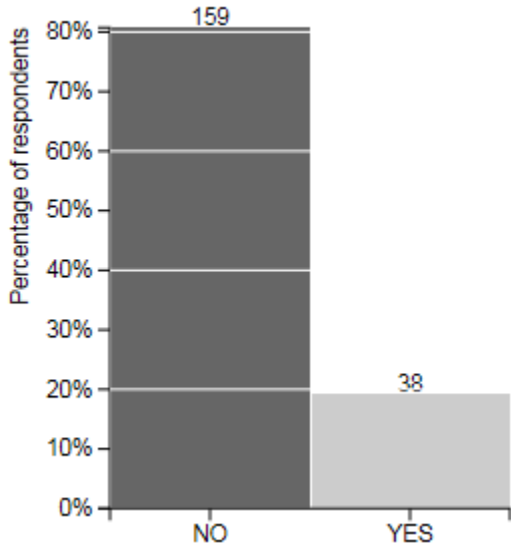
GROWING OUR ECONOMY

60 London Community Foundation's "Back to the River Project"

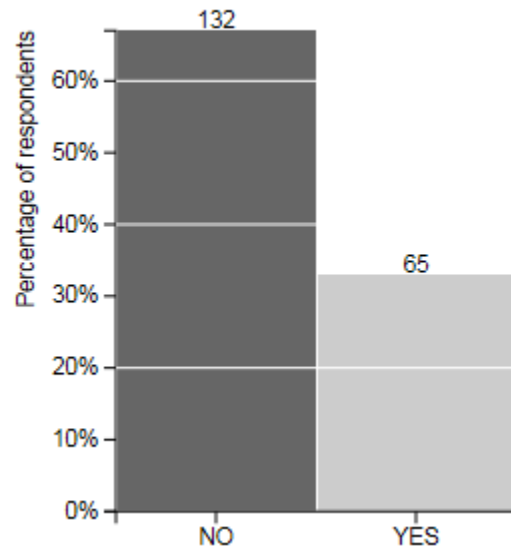
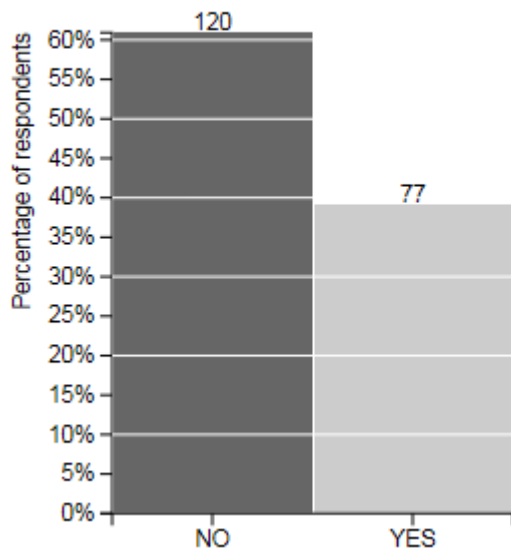




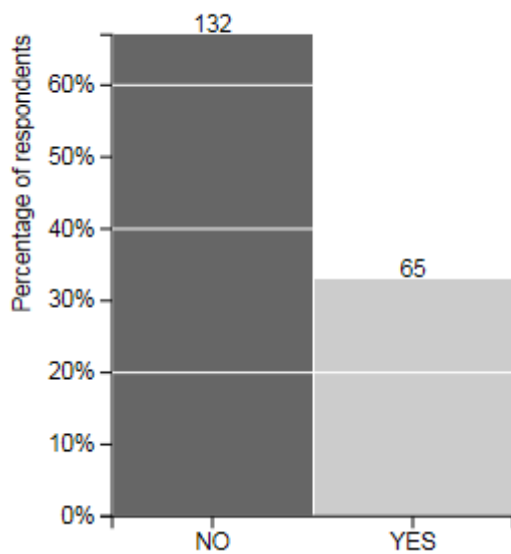
61 Streamline Approval Process in Development Services



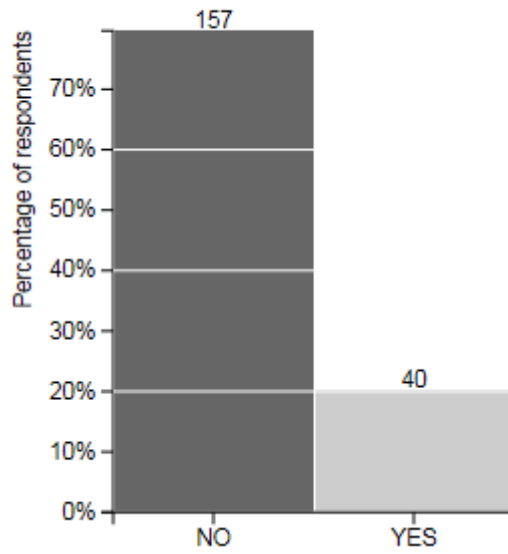
62 London's Downtown Plan – Small Scale Projects **63 Regenerating Public Housing Plan**



64 Dundas Place



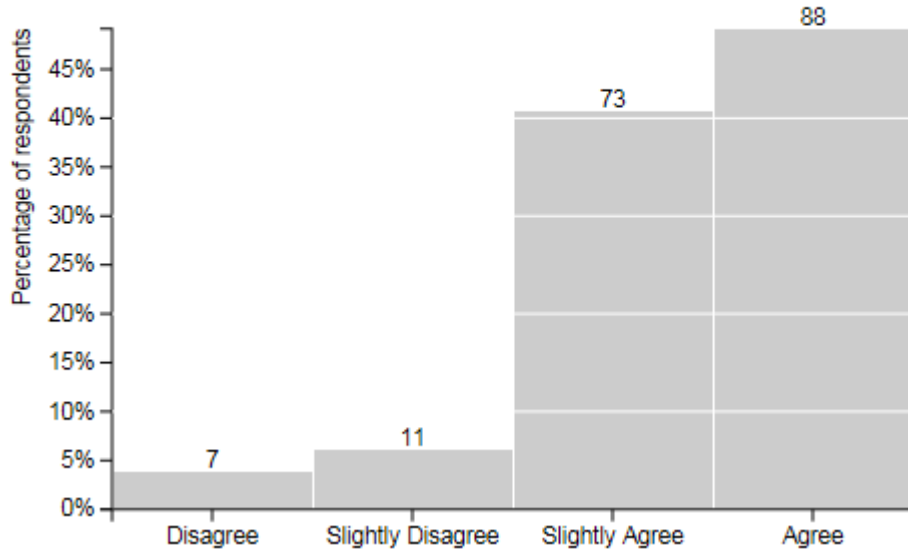
65 City of London Internship Program



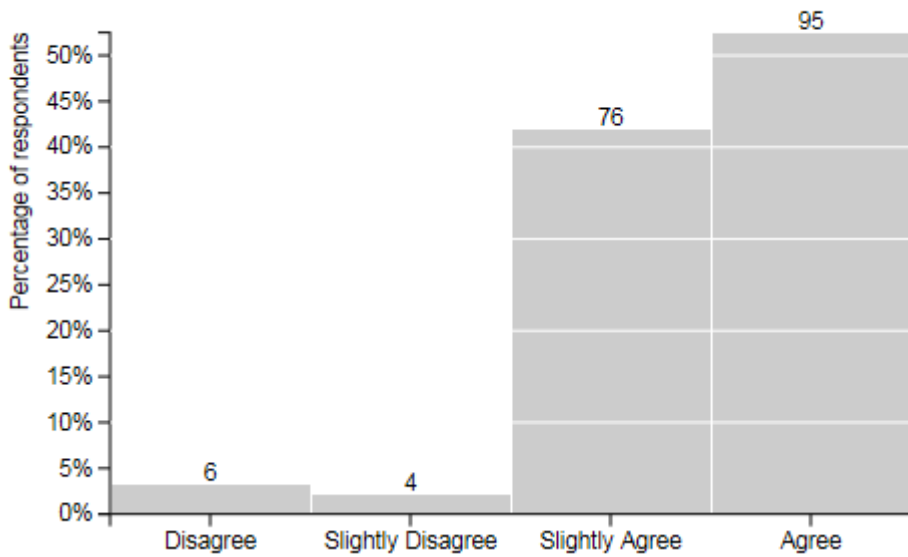


General Questions, Comments and Evaluations

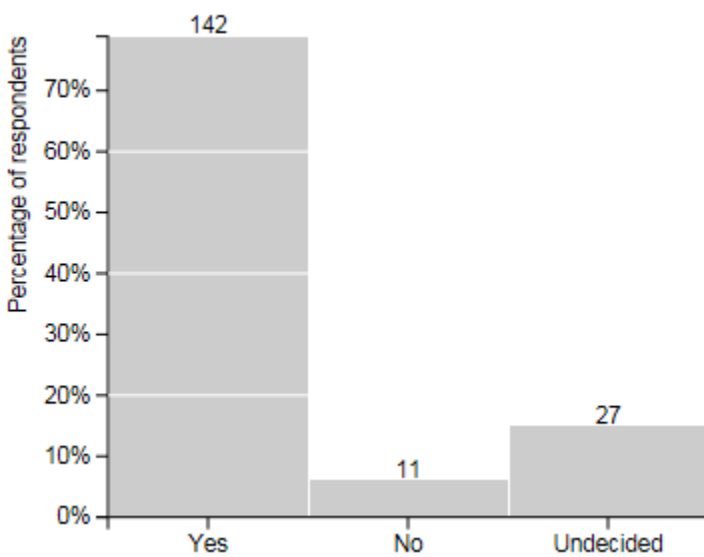
66 Through the simulated budget exercise I have been able to learn more about City services.

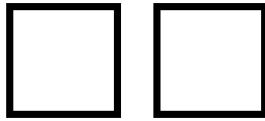


67 Through the simulated budget exercise I have been able to learn more about the City's budget.



68 Would you use this or a simulator tool in the future?





APPENDIX B

FEEDBACK CAPTURED VIA TWITTER, FACEBOOK, EMAIL, AND PHONE

*Emails sent to budget@london.ca during the time period of **January 26, 2016 – February 16, 2016**. This only includes feedback and/or statements, as all questions answered by finance staff have been removed.*

I suggested having Reforest London & The Million Tree Challenge folks be given enough funds to handle all of the tree planting.
They know what they're doing and can do it for a lot less, and they'll make better choices. They could rent 10 Rent-a-wreck vans with trailers, load up with saplings, mulch, shovels & buckets. College kids could easily plant 1000 saplings a week, or even 1000 a day. Start with Carolinian species - they'll be able to take the heat that's coming sooner than you'd think.
Plant them everywhere & anywhere. Use a wide diversity of plants & trees & plant little ecosystems & defensive plants around groups of baby trees.
Start with native clovers, native roses, ? Cacti, gooseberry.
. Forget all the 'city hall speak' of rules, regulations, do's & don'ts. If any are in the wrong spot that can be addressed in a couple of years.
Ignore the NIMBYs & neighbours.
Leave Forestry & Parks & Rec to maintain & monitor the new babies. Weekly watering if necessary, then as needed.
Keep the whipper snippers & lawnmowers away from plantings. Fine cyclists who chain their bikes to young trees.
Get on it people.
Do you want the Forest City, or Stump City?

I've noted that there are no increases to the lifecycle renewal budget for sidewalks over the next ten years. Since other lifecycle renewal budgets do have increases over time, and there will also be more sidewalks as time goes on, I'm just curious as to why the budget to repair and replace sidewalks isn't set to increase.

Perhaps you might explain to those of us who have retired and no longer have access to income from employment how we are supposed to maintain our personal financial integrity when governments want to take never-ending tax increases from our pockets.

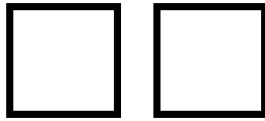
The federal government increased OAS and CPP payments by 1.2% in January over the previous January amounts. This increase will provide my wife and me with an extra \$329.52 for the year. We have no other pension income and have watched as the investments we do have dwindle because of the situation in the economy. Excluding the amounts I withdrew from our pensions last year, the balance dropped by over 10%.

If property taxes rise by 2.5% in 2016, the addition to my taxes to the city will be \$78.24. Kathleen Wynne has removed the 10% reduction from hydro bills, so this alone will increase this cost by \$150.28 in 2015, not including any other increases she may decide to impose.

Wynne and Trudeau are both considering ways to impose carbon taxes. How much will this take from us?

The proposed property tax and electricity rate increases will cost me a minimum \$228.52 (78.24 + 150.28). This is 69% of the increase in the federal pensions.

With the negative impact the lower Canadian dollar has on foods and other imports, I expect the remainder of the increase in the federal payments will go to paying for food and medical supplies.



I anticipate that my standard of living will decline during the year and possibly following years because of government spending habits.

I am concerned with investment in a light rail rapid transit system. I agree wholeheartedly with the article written by Phil McLeod titled "Unprotected sex on the LRT" and can only hope that this council considers the concerns the article presents. Yes to buses, no to trains

In my remarks to the SPPC during last year's budget deliberations, I outlined the ethical and practical reasons for increasing the budget allocations for protection of London's natural heritage. I note, however, that the capital budget for ESAs in the proposed 2016-2019 budget remains at \$200,000 per year, the same as in previous years. Because of inflation, this of course represents a cut in real terms. Furthermore, there seems to be no provision for an increase in the contract amount for UTRCA maintenance and improvement of the city-managed ESAs, despite the addition to the contract of the Coves ESA. I pointed out last year that UTRCA's 3-man management team, however hard-working as they are, is insufficient to meet the manifold needs of the job, which includes everything from breaking up bush parties to trying to control other invasive species. Buckthorn has already taken over 50 percent of Westminster Ponds/Pond Mills ESA. Buckthorn, Giant Hogweed, and Dog-strangling Vine constitute a serious threat to the biodiversity of London's ESAs, and it is imperative that more resources are devoted to controlling this threat.

The proposed budget flat lines assessment growth at \$5.172M per year over the 4 yr period. I understand predicting assessment growth is difficult (and that the city doesn't get the information from MPAC until early in the calendar year). However, leaving it at a set amount means that the estimate of growth goes from 1% growth for 2016, to a lower percentage in each subsequent year.

As the amount included is a placeholder only (\$1.75M), will there be some sort of presentation to Council on how the Options would be implemented and which would be staff's recommendation?

I am a bit puzzled about the # put forward on page 35 of the budget document regarding the uploading. City net share is going to be 5.8% in 2016. According to a provincial web site I looked at, it says 71% of costs will be uploaded by 2016. I am trying to reconcile the different #s.

The OW impact over the 4 yr budget is \$8.2 M. There is a similar uploading of court security costs. There is no \$ figure given in the budget document although there is mention of the uploading in the narrative to the Police budget. What is the \$ impact of this uploading? Like OW, the province says the % uploaded is going from 57% in 2015 to 71% in 2016.

I wanted to thank all Members of Council for engaging in Community Living London's presentation at the Community Participation Meeting for the multi-year budget process on Thursday, January 21, 2016. Our position has not changed after 15 years of advocating for access to affordable public transit for Londoners based on their income and ability to pay, rather than their age or disability.

To be clear, we are asking for action on the following;

- 1) Development of a new Public Transit Subsidy Program that is based on income for all Londoners with consideration on how other municipalities offer these programs.
- 2) Implementation of the new program utilizing existing subsidy funding for seniors and people with visual challenges (approximately \$535,000.00) – as a start
- 3) Evaluate the demand for the program and increase funding based on usage within the multi-year budget process

| | |
|--|--|
| | |
|--|--|

We urge Council to take action now as 15 years is significant when it comes to restricting access to public transit for Londoners who live below the poverty line. We look forward to hearing what actions we can expect towards the implementation of a new Public Transit Subsidy Program.

Emails sent to budget@london.ca during the time period of January 11, 2016 – January 26, 2016. This only includes feedback and/or statements, as all questions answered by finance staff have been removed.

Please consider putting a great deal more into planting & maintaining trees in the Forest City. If we don't get more of them into the ground, plus put more into watering, protecting & inspecting trees, we may be changing our tag line into : STUMP CITY.

There should be more interest (& \$) in covering walls & roofs with greenery.

More attention should be paid to pervious surfaces.

There are several things that will effect our taxes that are not necessary in a city this size.

1. Makeover the river project ...this is a complete waste of time & money. The river is not a tourist attraction to the city & never will be as it is too shallow, dirty & full of junk.

2. Rapid transit. This is not needed as our traffic compared to larger cities is not an issue. If more buses where put on the existing busy routes if would speed up commuting for those who use the buses. The extreme costs involved of doing otherwise is a waste of taxpayers money.

3. Makeover of Dundas Street from River to Wellington St. Again this is a waste of our money for the amount of people who would use it.

4. Arts Centre. We do not need a new centre. We already have the Convention Centre, Centennial Hall, Budweiser Gardens, Aeolian Hall & Grand theatre. This gives enough space for any number of activities to take place in our City. A new centre would only benefit a exclusive few who could afford to attend any event held there. Most of the people in London can't afford to attend such activities & would be of no benefit to them even though their taxes will be used to benefit the rich few.

Our tax money should be used to improve life for all Londoners, not just a few.

We have many people who need assistance, who are homeless or have mental health issues, seniors who live on very limited incomes.

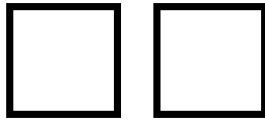
We need to be doing more to help those who need our assistance rather than wasting money on things that do not need fixing or fancying up in the first place.

There are people with flooded basements, roads in need of repair, waste water improvements so sewage does not run into the river in storms.

These are just some of the important issues that should be addressed before money is frittered away on luxuries we do not need.

I am not able to attend any meetings but someone needs to listen to those of us who pay taxes & would like our money to be used in a manner to fix what needs to be addressed and will acctually help us live better lives.

I would like our money to go toward improving the abysmal traffic flow in London, as well as the infrastructure. I'm sick of sitting in traffic jams, making me late for work and being told by



a city employee that, "the lights are working fine." They're not . We also need better social programs to help those in need.

You saved a bundle of money while your employees were on strike. The least you could do is to keep the tax rate lower for everyone.

The forks of the Thames is beautiful as it is. I walk through that area twice a day as do many others. It's filled with dog walkers, cyclists, pedestrians, and children. I don't want my money wasted on some pie in the sky project. London is not a destination city like Toronto or Niagara Falls. People aren't going to flock here just to see the Forks of the Thames. Why not spend a small amount of money for a few extras - more flowers, benches, etc. Stratford has the right idea with their beautiful city.

I haven't had a raise in several years and when I did get them, it was one percent. I don't have the money to keep paying for ridiculous projects that cost a fortune. I will just end up retiring to another city, where I can afford to live. Why don't you think about what you can do to keep people living here instead of trying to attract outside people at the expense of our wallets?

Council should consider contracting out many city services. Grass cutting, tree trimming, pot hole filling, garbage collection, payroll etc. could be done for far less by the private sector. The businesses (small & large) that pay taxes to the city should have the opportunity to bid on these tenders. There is no doubt in my mind millions can be saved by outsourcing. Does council have the backbone? We shall see.

Please consider this an open letter to City of London MGR/ CFO / Mayor Matt Brown and Council with respect to the 2016-19 budget and approval process;

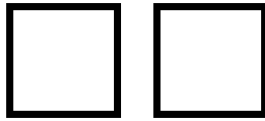
1. Incorporate the **removal** of the moratorium on downtown London development fees currently wrapped under the Community Improvement Plan in **this** budget approval process. Martin Haywood has confirmed that a review of this " plan " is not ready for the March 2016 Budget Approval deadline and that's just plain wrong. As taxpayers we are paying millions of \$\$ in development fees through the reserve fund and will continue to pay as " Shift Funding " ramps up funding from same development fees all to benefit rapidly increasing property values in the downtown core. The City of London Plan (45 % internal growth) plus Shift are already pointing the way in development. Old East moratorium may have to hold until the data is clearer.

2. City of London - " Lean - Continuous Improvement Program " lead has confirmed there are no cost savings associated with this much communicated program laid into the 2016-19 Budget projections. Benefits from this new program are now expected to focus on internal/ external City of London customer service and quality improvements well I'm sure as a taxpayer I will be asked to support the " Lean " training costs under the wrap of " Service London " .

>>> Action Required : The City of London urgently needs to incorporate a Cost Savings program visible in the approved budget process to start filling the gap in tax increases above the rate of inflation.

This will take leadership and commitment @ City MGMT team, Mayor and Council to address the cultural change required. The City of London 2016 - 1.366 % Res Mil rate is already in the top 25 % of Ontario city's and screams positive opportunities for reduction - not increase. The shell game with ever increasing property assessed value is just about done , so we need to start this type of program to remain competitive and support our ratepayers out to 2019.

3. I support Councilor Jared Zaifman 100 % in the requirement to review and identify the " Low Hanging Fruit " with respect to City of London assets and move forward with the garage sale most of us would have no issue with annually.



>>> Action Required > So how do we include this in the current Budget process and can this be brought into the 2017 annual review session ? You want new toy's - sell the old ones. Under no circumstances should funds from these sales be sheltered in a special - reserve fund - just fill the gap between inflation rate and Res tax rate with the proceeds.

4. At least 50 % of the \$10 Million special dividend from London Hydro should be allocated back to general funds to offset the gap in any tax increases over inflation rate out to 2019 . Why as a taxpayer would I want to continue to own London Hydro if I can't be at least an 50 % equal partner in the benefits ? Using 100 % of this dividend to fund new special interests is like being a Credit Union Member and being asked to forfeit your annual dividend to build a new Branch for RBC.

5. Mayor and Council need to really push the reset button and consider the following in London demographics and the spill over effect on increasing tax rates;

>> Our population growth rate is only 0.5 - 0.6 % , lower than most major cities.

>> Our 60 years + population is 20 % or greater in 2016 and is expected to be the fastest growing demographic slice out to the end of 2019 , this budget cycle.

>> With the 16 % to 9 % drop in manufacturing jobs in London since 2006 the growth in the " walking wounded - not fully employed " population 50 - 55 years old from CAT - Kellogg (ETC) closures is huge. They don't live on much income but in most cases continue to be City of London taxpayers .

Action Required >> Hold the tax increases to the promised Rate of Inflation (not goal - a promise) as this sector of the population has little disposable income to cover your request.

I'd much rather the "Dam" \$\$\$ be spent on getting trees in the ground NOW. Plus more \$\$ to water, inspect & maintain these trees.

It will be good for the environment of London itself, but you are already way behind in replacing geriatric trees.

This could generate jobs (the Green Initiative model) and healthy employment for marginalized people.

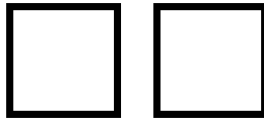
It may even attract educated young people who may be convinced London is forward thinking.

To Council members and Mayor Matt Brown

Look forward to constructive feedback shortly on our budget process. I am reviewing components and may have a workable and viable procedure to aid in your decision making process. I have lived and owned property in London for over 35 years, spoke with former Mayor Diane Haskett, sold the city amenities to attracting businesses to us, all in a back of the bus position so to speak. No fanfare, I am a proud Londoner and take every opportunity to attract new business thru networking.

I have become quite passionate about finding healthy, local organic food to feed myself, my family and that the community can strive off of as well. I believe learning about quality, nourishing food and how to prepare it is fundamental in a child's upbringing as well as adulthood.

I am so excited to be a part of a community where these options are popping up in abundance. I am also proud to see so much local passion, as the buy local movement is becoming quite strong throughout the community, and it is no longer a movement but a lifestyle. London is an amazing place to call home, and I am so proud to live here and to witness all this positive change first hand.



I have had a dream now for many years while living here, and just more recently I have become more passionate about finding a way to make this dream a reality. Springbank Park is one of my favourite parks to go for walks, runs, picnics or even just to relax and be outside along the Thames River. My husband proposed in Springbank Park along the bridge and we also got married there, it holds a great significance to us. This park is popular amongst most Londoners whether for leisure purposes, social gatherings or workouts, it's a place where the community is able to access green space within the city. There are two cottages within Springbank Park, one being the Flint Cottage. I have often thought how nice that cottage would be for a local café, specializing in local organic healthy food to nourish everyone in the park. A meeting place to grab a fair trade organic delicious coffee with a friend, or a place to buy a refueling smoothie after a workout. I picture picnic blankets out front with pillows and families enjoying time together, a place where the community comes together and learns about local events through a community board, a place for learning and a place to simply nourish the soul. Eventually I would love to see a small local garden attached to the café where children of all ages can come and learn how food is grown, what it looks like, and then what it tastes like. I believe a green, community based café in Springbank Park would thrive and benefit all those who frequent Springbank Park as well as continue to empower the buy local philosophy as well as support local organic food.

I was fortunate to live in Melbourne, Australia for a year. While living there, there were two café's that still to this day stand out in my mind;

The Farm Café (<http://www.farmcafe.com.au/farmcafemelbourne/>), and COG Bike Café (<http://cogbikecafe.com.au/menu-2/>). Both of these trails were accessible by biking, walking or running. I loved seeing the active community gather at these two spots either to start their morning bike ride or to relax after a grueling run. I always thought we needed something like this within our community. The Springbank Café would become the common meeting ground for all active lifestyles within the park whatever level you may be at, as well as a spot for those that love good, quality local food.

I am reaching out to the City of London as a means to begin a conversation, as I would love the City's full support in this project in helping to create a community environment in one of our most beloved parks. At this point I am not sure if this is just a pipe dream or something that one day could be a reality, but I am really hoping that one day it isn't just a dream. I am looking forward to hearing from you to further discuss how we can move forward with this vision for London and Springbank Park.

Thank you for your time, I look forward to hearing from you.

I have been a London resident, paying taxes, for the past 20 years. It astounds me that we continually hear about the need to raise taxes to fund city planning. If I was to compare my income to the changes in taxes and cost of living, I am on the losing end. This simply means I have to try and do the same with less money. As a father of 4 growing kids, this becomes more and more difficult. Is there no better way of funding these projects? I am sure that with the intelligent minds on city council, better solutions can be found.

I object to raising taxes, and urge the city to find other ways to finance projects.

PS...please also realize that this increase does not account for the already increasing MPAC values....already creating burdens on London residents.

Thank-you for providing an opportunity to offer my input into the proposed budget increases.

I will say that I am against a budget increase that is outpacing my salary increase. It is unsustainable and I will be looking to move my family from London to an outlying area that is more affordable. Increases of about 3% year after year are easy to propose but most people do not realize that an annual numeric increase results in an exponential tax increase as subsequent increases are based on previous increases.

In these tough economic times, consumers are feeling increases in all areas of necessity. However, many people are not seeing income increases at rates that are parallel. This effectively reduces the quality of life of the residents of London. Instead of increasing the taxes to generate more revenue, reduce the taxes to draw more homeowners

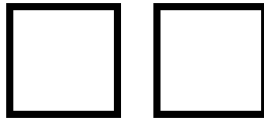
| | |
|--|--|
| | |
|--|--|

to generate the equivalent revenue. Have more people share the burden not have fewer bear more.

I currently live in southeast London, Pond Mills area. One issue that I feel needs to be addressed is the fact that this area of London is often ignored. A simple thing such as curbs along the major roads do not exist in this area. Deep ruts on the sides of the road and large puddles make it difficult for anyone to get around in this neighbourhood either on foot, bike or mobile assistant devices. As for rapid transit...how do we access it from this location? The train tracks are extremely rough causing many drivers to brake before crossing. Why can't the roadways in this area be as attractive and safe as the many neighbourhoods in north and west London. I pay my taxes just like every one else yet my neighbourhood is a mess

*All Tweets using @CityofLdnOnt or #LdnBudget during the time period of **January 26, 2016 – February 16, 2016** are shown below. All re-tweets, favourites, and/or questions have been removed. To date (February 16, 2016) – **721 tweets generating 2,326,739 impressions***

- The latest #ldnbudget public input report is fascinating (if you're fascinated by public input): <https://t.co/JdCCk97icX> #LdnOnt
- Council starts debating the #LdnBudget again on February 18th at 10am. Let us know what you think!
- Let's celebrate diversity in #ldnont have it be reflected in the Diversity & Inclusion Plan #ldnbudget
- The vitality of our community depends on diversity & inclusion. Ask #Ldnont to put specific \$ in #ldnbudget for this strategic priority.
- Thanks to @CityofLdnOnt's Martin Hayward & Jon-Paul McGonigle for emailing answers to #LdnBudget queries raised @ the @ULldn mtg -impressed!
- @AnnaHopkins11 I want City Council to allocate the \$\$\$ needed to implement its own Urban Forest Strategy!! #ldnbudget
- Great to see young #ldnont|ers talking #ldnbudget with city staff @CityofLdnOnt
- All set to hear from London's community associations about #ldnbudget @ULldn. City Treasurer Martin Hayward in the house to answer tough Q's
- Packed room for @ULldn's Feb meeting. Tonight we're looking at #ldnbudget. ULL meetings are free to all #ldnont'ers.
- Martin Hayward will be talking #LdnBudget, and answering questions, at tonight's @ULldn meeting. Grosvenor Lodge, 7:30. Open to everyone!
- Still have questions about the Multi-Year #LdnBudget? Join the Treasurer @ one of our open houses this week. #ldnont
- I support a city for all, I support \$ in the #ldnbudget for diversity & inclusion & @EndPovertyLDN & affordable housing.
- A city can only reach its potential if it includes the voices, talents & participation of everyone. We need a city for all.
- We asked City Council to put \$ in #ldnbudget for its Community Diversity & Inclusion Plan. Now we are asking you to ask



| |
|--|
| <ul style="list-style-type: none"> • #ldnbudget, @CityofLdnOnt put trees in the budget; |
| <ul style="list-style-type: none"> • Join the @ULdn Feb 4 to hear the City Treasurer discuss the #ldnbudget -all welcome! Grosvenor Lodge 7:30pm. #ldnont |
| <ul style="list-style-type: none"> • I'll be at the #LdnBudget Open House this Saturday 9:30am-11:30amCanada Games Aquatic Centre1045 Wonderland Rd N |
| <ul style="list-style-type: none"> • Supporting the #ldnstratplan via the multi-year #LdnBudget is critical. #SOTC2016 #ldnont Share your thoughts at: https://t.co/HPGf6F6rDZ |
| <ul style="list-style-type: none"> • #LdnOnt! Have your say on the @CityofLdnOnt first ever multi-year #LdnBudget. Try the "Build a Budget tool" here |
| <p><i>All Tweets using @CityofLdnOnt or #LdnBudget during the time period of December 23, 2015 – January 26, 2016 are shown below. All re-tweets, favourites, and/or questions have been removed. 549 tweets generating 1,963,535 impressions.</i></p> |
| <ul style="list-style-type: none"> • Try our new budget simulator at https://t.co/PdMc6o0JUc and have your say on the City's first multi-year #LdnBudget. |
| <ul style="list-style-type: none"> • #ldnbudget Fire chief eliminating 3 Fire Service Positions, cuts to service pg123 of Multi Year Budget for London |
| <ul style="list-style-type: none"> • Today is the first of two public participation meetings on #LdnBudgetCity Hall – 4pm, Council Chambers |
| <ul style="list-style-type: none"> • Insightful presentations from community last night at #ldnbudget PPM. Thx |
| <ul style="list-style-type: none"> • Thanks to all who attended our Build a #LdnBudget workshops! There are still many ways for #ldnont to get involved. |
| <ul style="list-style-type: none"> • Fun with numbers! Try this on your own or get together with some friends and see what happens #LdnOnt #LdnBudget |
| <ul style="list-style-type: none"> • Does this year's effort stem from a "zero-based budget approach"? Have not heard that term lately... #ldnbudget #ldnont |
| <ul style="list-style-type: none"> • Recommendation from @CycleLdnont for a protected cycle track along King St from downtown to #oevldn #ldnbudget |
| <ul style="list-style-type: none"> • Such an impressive series of presentations by #ldnont ers so far at the public participation on the #ldnbudget. |
| <ul style="list-style-type: none"> • Latest column: Inflating the wrong numbers (2016 multi-year budget) https://t.co/zXkGLtoTv6 #LdnBudget #LdnOnt |
| <ul style="list-style-type: none"> • @WesternUSC endorsing @ShiftLdnOnt, TVP corridor, Dundas Street & Back to the River projects as part of #ldnbudget |
| <ul style="list-style-type: none"> • Listening to @AbeOudshoorn discussing importance of looking at women in relation to housing & homelessness as a next step. #ldnbudget |
| <ul style="list-style-type: none"> • @CycleLdnont doing great presentation on supporting key #ldnbudget items to address cycling infrastructure gaps... |



| |
|--|
| <ul style="list-style-type: none"> • Appreciate councillors asking meaningful questions on public presentations on #ldnbudget |
| <ul style="list-style-type: none"> • Happy to see kids in the gallery at public participation meeting on #ldnbudget #citizenengagement |
| <ul style="list-style-type: none"> • Last week Council supported my motion to add 5 additional #LdnBudget community information sessions. #ldnonthttp://t.co/6iOjZLhUvn #ldnbudget15 #ldnont |
| <ul style="list-style-type: none"> • Need more info. about your library's budget? #ldnbudget https://t.co/3LlqqOhnV6 https://t.co/EihOvjJ0CY |
| <ul style="list-style-type: none"> • How many #LdnOnt business owners would be interested in talking about the #ldnbudget at our next Open Coffee? (Feb 2 at 8 AM) |
| <ul style="list-style-type: none"> • Learn more about your library's budget and impact here: https://t.co/OWiWIXkOOg #ldnbudget https://t.co/wFVe8VYch4 |
| <ul style="list-style-type: none"> • First multi-year budget in #ldnont history. Interested? Open house from 6-8 tonight at Goodwill Bldg Dwntwn #ldnbudget |
| <ul style="list-style-type: none"> • REMINDER: Tonight is our last Build a #LdnBudget Workshop. Join us at Goodwill Industries from 6-8. Child minding available #ldnont |
| <ul style="list-style-type: none"> • Come share your questions and ideas with us at tonight's Build a Budget workshop. #LdnBudget |
| <ul style="list-style-type: none"> • @CityofLdnOnt staff kicking off the 2nd #ldnbudget build a budget workshop at 255 horton. Come out, here until 8. |
| <ul style="list-style-type: none"> • Speak up for #LdnOnt #heritage! Join @CityofLdnOnt tonight at Build a #LdnBudget Workshop: https://t.co/q5jzsAAdxF https://t.co/Z6RphL6TX7 |
| <ul style="list-style-type: none"> • If you've got thoughts on the transportation-related parts of #ldnbudget, I'd love to hear them! |
| <ul style="list-style-type: none"> • Keep the FOREST in the Forest City -budget for TREES! @Matt_Brown_ @SquirePhil @MaureenPCassidy #ldnont #ldnbudget @CityofLdnOnt @rfldn |
| <ul style="list-style-type: none"> • My biggest fear of Multi-Year #ldnbudget is places that are not active going to all areas & assisting #LdnOnt will still receive funding. |
| <ul style="list-style-type: none"> • Very impressed w #ldnbudget session. Lots of staff ready & willing to answer q's . Had a great time. |
| <ul style="list-style-type: none"> • At #ldnbudget public mtg @MayorMattBrown, many Councillors and Sr Staff here to answer Qs till Noon Goodwill Bldg DT |
| <ul style="list-style-type: none"> • Any \$ for revamping Carfrae park West? #ldnbudget |
| <ul style="list-style-type: none"> • Say yes to trees in the #ldnbudget today @Goodwill_OGL at the @CityofLdnOnt 's Build a Budget session 10am-12pm. |
| <ul style="list-style-type: none"> • Big thanks to @winmillady for joining me on @LdnOntTV to talk #LdnBudget tonight. We could've easily done an hour on that topic. |
| <ul style="list-style-type: none"> • I want to see that our Council is willing to invest in our city and a future vision of what is possible. #ldnbudget #ldnont |

| | |
|--|--|
| | |
|--|--|

| |
|--|
| <ul style="list-style-type: none"> • It's official, the multi-year #ldnbudget package has weighed in at 11 pounds #ldnont |
| <ul style="list-style-type: none"> • #LdnOnt #police annual #budget will exceed \$100 million by 2019, new projections show |
| <ul style="list-style-type: none"> • #ldnbudget is using the Construction Price Index not the Consumer Price Index? With a poor explanation as to the reason why its used. |
| <ul style="list-style-type: none"> • My #ldnbudget number is \$62,000,000 that is roughly what they will be paying to service debt. #LdnOnt |
| <ul style="list-style-type: none"> • Page 43-44 of the budget (base budget) puts RT in the context of the base 10 year capital budget #ldnbudget |
| <ul style="list-style-type: none"> • Where is the \$355 million Rapid Transit investment coming from & the \$121 million Transit investment in the #ldnbudget? |
| <ul style="list-style-type: none"> • Interesting: Tourism London budget will increase net 110K from 2016-19 with a notable increase of 2.4% from 2015-2016. #ldnbudget #LdnOnt |
| <ul style="list-style-type: none"> • 10 year forecast shows #LdnOnt debt could potentially reach \$586.6 million. Debt servicing costs for 2016, total \$62.6 million. #ldnbudget |
| <ul style="list-style-type: none"> • Happy to see the annual warranted sidewalk budget up 75% to \$400,000. That'll make a big difference for a lot of #LdnOnt-ers. #ldnbudget |
| <ul style="list-style-type: none"> • CPI isn't the greatest comparator for inflationary pressures, as the city doesn't buy a lot of goods included in CPI #ldnbudget #ldnont |
| <ul style="list-style-type: none"> • Glad to see a proposed \$3.8 million additional investment in homelessness prevention in the multi-year budget #ldnbudget #ldnont |
| <ul style="list-style-type: none"> • Good info! Breakdown of an average property tax bill by service area, c/o @jesse_helmer: #ldnbudget #ldnont |
| <ul style="list-style-type: none"> • Thank you, @JoshMorganLDN, @MayorMattBrown, and council for improving the public engagement opportunities for #ldnbudget 2015. So pleased! |
| <ul style="list-style-type: none"> • I ended up making choices that would result in almost \$100 more in property taxes next year. #LdnBudget |