

Dingman Creek Environmental Assessment



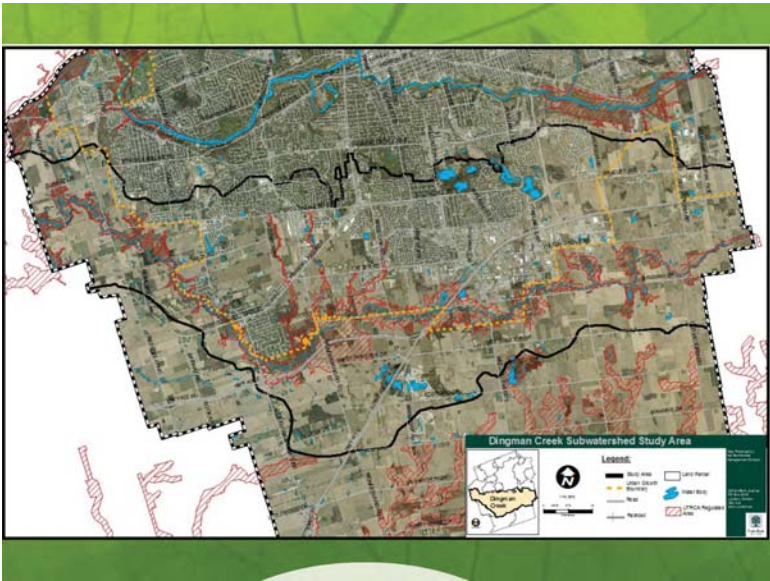
Study Area

South London



Why Dingman?

- Growth in the area is a City of London priority
- Room for improvement
- UTRCA Report Card



Why Dingman?



- Growth in the area is a City of London priority
- Room for improvement
- UTRCA Report Card

DINGMAN CREEK 2012 Watershed Report Card



- Growth in the area is a City of London priority
- Room for improvement
- UTRCA Report Card

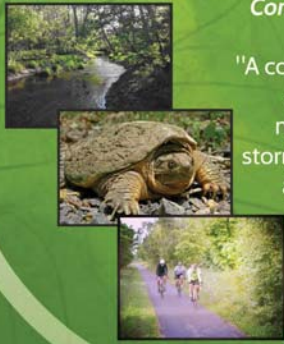
GRADES

Surface Water Quality
D - IMPROVED
 Forest Conditions
D - SLIGHT DECLINE

Philosophy

Complete Corridor

"A continuous natural area for the movement of stormwater, wildlife, and people."



Engagement

- Stakeholder Committee:
 - Local community groups, UTRCA, Provincial agencies, developers, EEPAC, agriculture, a Council member.
- Communications strategy:
 - Two public meetings, dedicated website, logo, social media.



Pilot Project

- City, UTRCA, and MOECC
- Pilot for comprehensive approvals:
 - Today: each pond has a single approval (6-9 month wait)
 - New approach: one approval for the entire watershed



Project Team

Aquafor Beech

- Completed 1995 Subwatershed Study
- MOECC Low Impact Development Stormwater Manual Lead



- Upper Thames River Conservation Authority
 - Project partner in floodplain modeling



Next Steps



- Initiate EA:
 - Oct 2015
- Form Stakeholder Group:
 - Nov 2015
- First Stakeholder Meeting:
 - Winter 2015
- Public Meeting 1:
 - Spring 2016
- Complete EA:
 - 2017

Dingman Creek Environmental Assessment

