

8TH REPORT OF THE
ADVISORY COMMITTEE ON THE ENVIRONMENT

Meeting held on November 4, 2015, commencing at 12:17 PM, in Committee Room #4, Second Floor, London City Hall.

PRESENT: M. Bloxam (Chair), J. Baxter, K. Birchall, S. Brooks, S. Hall, M. Hodge, J. Howell, L. Langdon, S. Ratz, G. Sass, and D. Szoller and B. Mercier (Secretary).

ABSENT: C. Baranik, G. Barrett, C. Kushnir and B. Schulz.

ALSO PRESENT: S. Armstrong, T. Arnos, B. Branfireun, M. Johnson, J. Skimming and J. Stanford.

I. CALL TO ORDER

1. Disclosures of Pecuniary Interest

That it **BE NOTED** that no pecuniary interests were disclosed.

II. SCHEDULED ITEMS

2. Community Energy Action Plan and the PACE Program Updates

That it **BE NOTED** that the attached presentation from J. Stanford, Director, Environment, Fleet and Solid Waste and J. Skimming, Manager, Air Quality, with respect to the Community Energy Action Plan and updates on the PACE Program, was received.

III. CONSENT ITEMS

3. 7th Report of the Advisory Committee on the Environment

That it **BE NOTED** that the 7th Report of the Advisory Committee on the Environment from its meeting held on October 7, 2015, was received.

4. 5th Report of the Transportation Advisory Committee

That it **BE NOTED** that the 5th Report of the Transportation Advisory Committee from its meeting held on October 6, 2015, was received.

IV. SUB-COMMITTEES & WORKING GROUPS

5. Waste Management

The following actions be taken with respect to the Waste Management Sub-Committee Report:

- a) the Civic Administration **BE REQUESTED** to consider offsetting the additional waste to the landfill by introducing a new waste diversion projects such as a Green Bin program, community and backyard composting and a food scraps by-law; it being noted that the Advisory Committee on the Environment was informed by Staff that a Green Bin program could add one year to the life of W12A landfill;
- b) the Civic Administration **BE REQUESTED** to consider taking advantage of a portion of the waste revenue received from new customers, to develop an additional waste diversion system such as the Green Bin program for London residents; and,
- c) it **BE NOTED** that the Waste Management Sub-committee minutes from its October 2015 meeting, were received.

6. Education and Outreach

That it **BE NOTED** that the Education and Outreach Sub-committee minutes from its meeting held on October 26, 2015, were received.

7. Energy

That it **BE NOTED** that the Energy Sub-committee minutes from its meeting held on October 23, 2015, were received.

V. ITEMS FOR DISCUSSION

8. Compact of Mayors

That the London City Council **BE ADVISED** that the Advisory Committee on the Environment supports and commends the initiative of joining the Compact of Mayors, a global initiative for cities to undertake a transparent and supportive approach to reduce city-level emissions, to reduce vulnerability and to enhance resilience to climate change.

9. ACE Best Practices Discussion

That it **BE NOTED** that the Advisory Committee on the Environment (ACE) held a general discussion with respect to best practices and goals related to the functionality of the ACE.

10. Special Tour of a Sustainable Home

That it **BE NOTED** that a communication from L. Langdon, with respect to an offer for a special tour of a sustainable home, was received; it being noted that the Members of the Advisory Committee on the Environment will attend a guided tour of a Sifton Net Zero home in December 2015.

11. 2015 Canadian Climate Symposium Funding Request

That it **BE NOTED** that the Advisory Committee on the Environment (ACE) received a communication from D. Szoller, with respect to the Canadian Climate Symposium 2015 to be held on November 12 to 13, 2015 in Ottawa, Ontario. The ACE approved the expenditure of up to \$500.00 from its 2015 Budget allocation for D. Szoller to attend the above-noted Symposium, on behalf of the ACE; it being noted that the ACE have sufficient funds in its 2015 Budget to support this expenditure.

12. "Pollinator Friendly Gardens" Flyer

That it **BE NOTED** that the Advisory Committee on the Environment (ACE) received a communication from D. Szoller, with respect to the "Pollinator Friendly Gardens" flyer. The ACE approved the expenditure of up to \$800.00 from its 2015 Budget allocation for the reprinting of the attached flyer; it being noted that the ACE have sufficient funds in its 2015 Budget to support this expenditure.

13. ACE Comments on the London Plan

That it **BE NOTED** that the Advisory Committee on the Environment previously submitted comments on the London Plan with commentary from D. Szoller, was received.

14. 2016 Work Plan

That it **BE NOTED** that the Advisory Committee on the Environment held a general discussion with respect to a 2016 Work Plan; it being noted that a high level list will be compiled and submitted at the December meeting.

VI. DEFERRED MATTERS/ADDITIONAL BUSINESS

None.

VII. ADJOURNMENT

The meeting adjourned at 2:40 PM.

NEXT MEETING DATE: December 2, 2015




London

LONDON

Status of CEAP, London Energy Connections Program and Local Improvement Charges for Energy (for Energy & Water Conservation)

REQUEST – ACE'S Energy sub-committee requested an update on the Community Energy Action Plan as well as the current status of the PACE program.

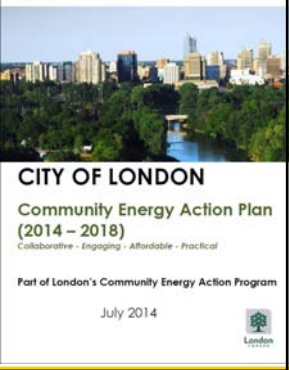
ACE Meeting, November 4, 2015



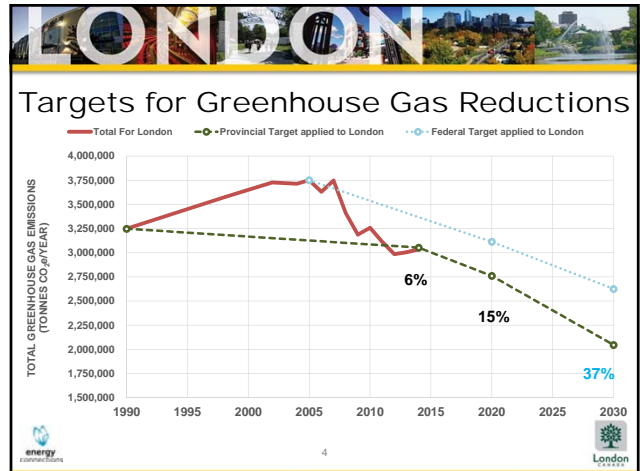
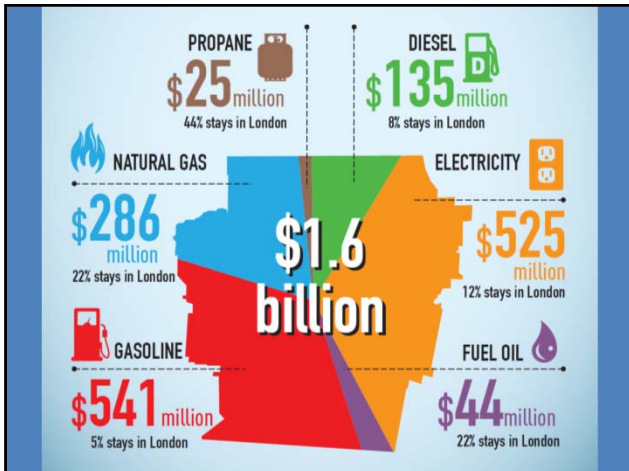
LONDON

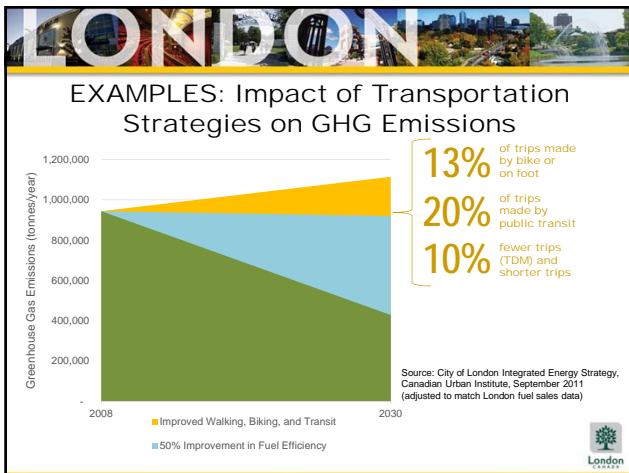
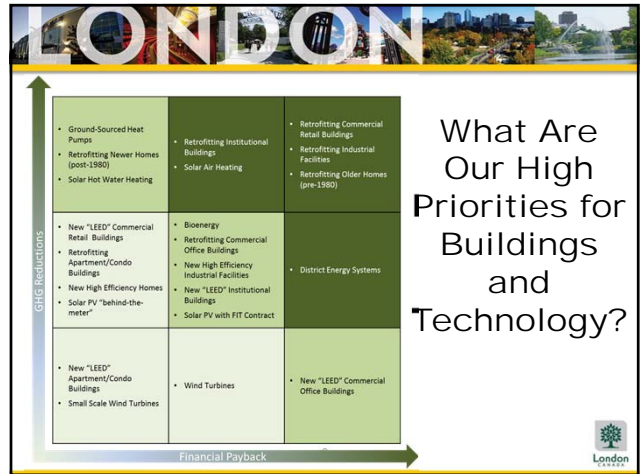
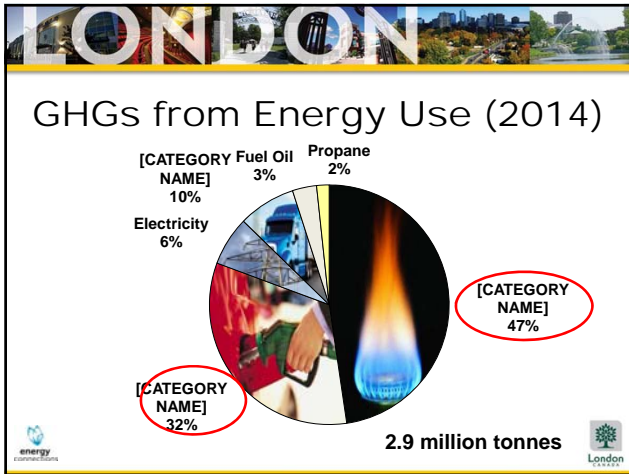
CEAP Goals

1. Increase the local economic benefit through:
 - Cost savings,
 - Revenue from clean & green energy, and
 - Job creation.
2. Reduce the environmental impact of energy use, consistent with **Ontario's GHG emission reduction targets**



CITY OF LONDON
Community Energy Action Plan (2014 – 2018)
Collaborative - Engaging - Affordable - Practical
Part of London's Community Energy Action Program
July 2014





LONDON

(draft) London Plan

Green & Healthy City

- "future-ready" development (solar, EV, district energy)
- encourage more district energy
- bonus zoning
- financial tools (LICs, CIPs)
- enshrines role of CEAP

energy connections London

LONDON

Strategic Plan

STRATEGIC AREAS OF FOCUS



Building a Sustainable City

- Implement CEAP
- Community-driven initiatives
- “Property-Assessed Clean Energy”



LONDON

New “Energy Literacy” Tools



How much do we spend on energy in London?

How do you compare? Natural gas use in London

The average London household spends: **\$79/month (186m³)**

This map compares natural gas use among single-family homes in residential areas of London. Find your neighborhood on the map and see how you compare!

LONDON

Active & Green Communities






LONDON

Status of City-Led Actions

Overall Progress on 2014/2015 CEAP – 40 Actions (as of May 2015)


Not Started	25% Completion	50% Completion	75% Completion	Completed
5 actions (13%)	9 actions (22%)	7 actions (18%)	17 actions (42%)	2 actions (5%)



Active & Green Communities

- Test and advance ideas at a manageable scale
- Two-way exchange of ideas:
 - What does the community want?
 - What can we offer?
- Community-led list of actions
- Measure progress




PROGRAMS AVAILABLE TO YOU...

Electrical Waste Pick-up *****
 Backyard Dumpster Sale
 Tree Sale (between London) *
 Growing naturally Test Consultation @ @ @ @ @
 Free Community Newsletter Printing - non profit
 Electrical Imaging Heat Loss Check-up @ @ @ @ @
 Active & Safe Routes to Schools
 Adapt to Street Park @ @ @ @ @
 Supporting Regional RideShare
 Water Conservation
 SPORKS Neighbourhood Matching Fund
 Hour Turn (FOG cap) *
 Free Me @ @ @ @ @
 Community CarShare
 Social Courts @ @ @ @ @

AND MORE!

IF THE SAVINGS TO TELL US WHICH PROGRAMS YOU WANT IN MILLINGTON!

13




PROJECT neutral

You need to know where you are starting from to create a plan to get somewhere else.

GET STARTED | LOCAL ACTIVATORS | NEWS & RESEARCH | CONTACT

QUESTIONS | FAQ | HELP PAGE | PROJECT NEUTRAL | SPONSORS & COLLABORATORS | JOIN US FOR AN EVENT

LOCAL ACTIVATORS

Project Neutral is currently working on these cities, with the organizations below as the Local Activator Partners. If your city is not on this list, please let us know by completing this short form.

Engagement Materials

Looking for information on how to run a PNC campaign? Need ideas on how to get started in your area? Request a guide!

View the guide





City of London

Emerge Guelph

PH-Toronto


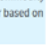

Active & Green Communities is a community engagement program linking the environment, health, neighbourhood vitality, and community well-being to build a more sustainable and resilient London.

Active & Green Communities is a

How You Compare to Your Neighbours...


	YOUR HOUSEHOLD <small>ANNUAL CONSUMPTION DATA</small>	COMMUNITY AVERAGE <small>ANNUAL CONSUMPTION DATA</small>	HOUSEHOLD BENEFIT <small>COMPARED TO YOUR COMMUNITY</small>
Saving Money			
Gas	\$1,035	\$1,901	\$866+
Electricity	\$1,736	\$3,127	\$1,391+
Water	\$818	\$1,411	\$593+
Personal Vehicle Use	\$3,369	\$3,216	\$153-
Your household's annual savings are... (compared to the average)			\$2,697

* 2014 costs: natural gas = 0.41 / m³ (includes commodity + distribution + service charges + taxes), average cost per vehicle = \$3216 based on 2532 L/year, oil = \$1.30 / L, electricity: mid-peak = \$0.197 / kWh, on-peak = \$0.22 / kWh, \$0.16 / kWh (includes commodity + distribution + service charges + taxes). Source: City of London, 2015. The City of London provides a tiered rate for water based on consumption (see www.london.ca for more info).






"Property-Assessed Clean Energy"

- U.S. term for "Local Improvement Charge"
- New LICs allow more than just energy
 - water conservation
 - stormwater mitigation




16





LONDON

Ontario LIC Pilot Programs

- CHEERIO research project
- Toronto 3-year pilot programs
 - HELP (single-family homes)
 - HiRIS (multi-unit apartment buildings)
- No other LIC programs - yet
 - Guelph is the next closest (GEERS)




Low interest financing for your home energy improvements


17




LONDON

Why No Other Ontario Programs?

- On-Bill Financing (MoE)
 - Negate need for LICs?
- Two different LIC models
 - HELP (customer picks contractor)
 - GEERS (City-approved contractor)
- Lack of municipal capacity
 - No “ready-made” resources



Conservation First
A Renewed Vision for Energy Conservation in Ontario


18


LONDON

Using LICs – Next Steps

- Update report for CSC in December
- Next steps to include:
 - Consult local stakeholders:
 - Utilities – Union Gas, London Hydro
 - London Home Builders’ Association (renovators)
 - London Property Managers’ Association
 - Local mortgage lenders


19


LONDON

A Look at 2016 & 2017+

Key (Major) Items	Key Focus
CEAP (40 + 15 actions)	Implement & expand
London Energy Connections Program (focus on business)	Advance & expand
‘Shift’ Rapid Transit EA	Approve & next steps
London ON Bikes	Approve & implement
Advanced resource recovery	Develop & approve
Low impact development (LID)	Advance & report
Climate change adaptation	Advance & report

London, Ontario ... on the path to being a “pollinator sanctuary”

Londoners are concerned about the effects of habitat loss and insecticides on pollinators. **How can we support pollinators here in the Forest City?**

Appeal for strong policies to preserve and restore ecological services, including enhanced pollinator habitat in The London Plan, London’s Official Plan, under such categories as Trees and Forests, Parks and Recreation, Natural Areas.

Request and support by-law changes to allow property owners to plant pollinator gardens.

Engage the City to lead by example by planting pollinator friendly landscapes throughout the City’s parks and other green spaces.

Contribute to pollinator gardens in backyards, boulevards, and other relevant spaces. Do not use synthetic pesticides or pesticide treated seeds and plants.

Create linked natural areas to preserve and increase pollinator habitat, while educating the community on the importance of pollinator health.



Bumblebee busy on a late September Russian Sage flower. photo: C. Downing

Resources:

* *The London Public Library is always a great place to start!*

<http://www.londonpubliclibrary.ca>

* **Upper Thames River Conservation Authority (UTRCA)**

<http://www.thamesriver.on.ca/watershed-health/native-species>

* **City of London**

<http://www.london.ca/residents/Property-Matters/Lawns-Gardens/Pages/Garden-Care-Tips.aspx>

Related staff - ecologist, urban forester and environment outreach coordinator.

* **Community Gardens London**

www.communitygardenslondon.ca



Milkweed - now allowed - is the only food for Monarch caterpillars. photo: C. Downing

* **Pollination Canada/Seeds of Diversity**

<http://www.pollinationcanada.ca>

* **Pollination Guelph:**

<http://www.pollinationguelph.ca>

* **Xerces Society**

<http://www.xerces.org>

.....

Brochure developed for the Advisory Committee on Environment, London, with assistance from many, in support of the goal to make London a Pollinator Sanctuary. November 2014

POLLINATOR FRIENDLY GARDENS



photo: C. Downing

Make your garden and London a safe haven for pollinators

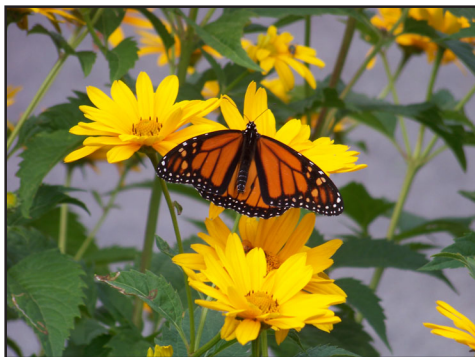
A POLLINATOR FRIENDLY GARDEN

All seasons, all life stages.

Plant it, they will come!

Bees, butterflies, moths, dragonflies, wasps, flies and hummingbirds live on pollen and nectar supplied by shrubs and trees, perennial and annual flowers, herbs and vegetables.

Their foraging pollinates plants and fruit, and then seeds develop and feed birds and mammals. Pollinators and other wildlife need gardens, hedgerows, thickets, set-asides, trees and brush piles for food, cover and nest sites.



Monarch butterfly takes nectar from Coreopsis, a native plant. photo: C. Downing

Proactive Protection

- * Do not use synthetic herbicides or insecticides (especially the neonicotinoids) in your garden.
- * Hybrid plants may have little pollen or nectar, or hard to reach pollen, and may be contaminated with pesticide at the nursery.
- * **Be bold in the questions you ask of your plant supplier.**

Positive Planting

- * Plant for each stage of a pollinator's life — nectar producing plants for adults, food plants for caterpillars, plants for pupae. Leave overwintering space like brushpiles.
- * Plant the widest range of plant types you have space for; plant in groupings.
- * Perennials with flower clusters or a long bloom period, grasses, and trees give much nectar and pollen.
- * Native pollinators appreciate native plants; they evolved together.
- * 3 seasons of flowering in all the colours give continuous, varied food for the many different pollinators.
- * Provide water, especially during drought. Insects can drink safely at the wet edges of water running over rocks, or the puddles from rain run-off and slow drip irrigation.
- * Some native bees live solitary lives in ground burrows so keep a sunny, well-drained (sloped) area free of mulch. Other solitary bees nest in hollow, cut stalks or abandoned insect tunnels; you can make nesting areas from wood blocks or tubes.
- * Talk to friends, neighbours, local organizations, businesses and politicians about becoming more pollinator friendly.



Bee gathers pollen and nectar from perennial Meadowsweet. photo: N. Beauregard

Pollinator Friendly Plants



Goldenrod for late forage. photo: C. Downing

Spring flowering

- * Red and Black Currants, Raspberries, and Serviceberry feed bees ... and later give birds and humans tasty fruit!
- * Willow for Orchard Mason bees, and Mourning Cloak & Viceroy butterflies.

Summer flowering

- * Perennial flowers for butterflies include Phlox, Swamp Milkweed, Rue, English Lavender and Butterfly Weed.
- * Hummingbirds enjoy Bee Balm and Nicotiana; and Nasturtiums, which flower 'til fall.

Late summer & fall flowering

- * Perennial Goldenrod & Michaelmas Daisy; self-sowing cosmos for bees.

Remember herbs & vegetables!

- * Kitchen thyme in bloom attracts myriad tiny bees, wasps and flies.
- * Lemon balm, catnip, peppermint, and sage feed pollinators, provide kitchen herbs, and may flower again.
- * Vegetables like squash, cucumbers, beans, and peas must be pollinated to let humans have a meal and for seeds to develop for future crops.