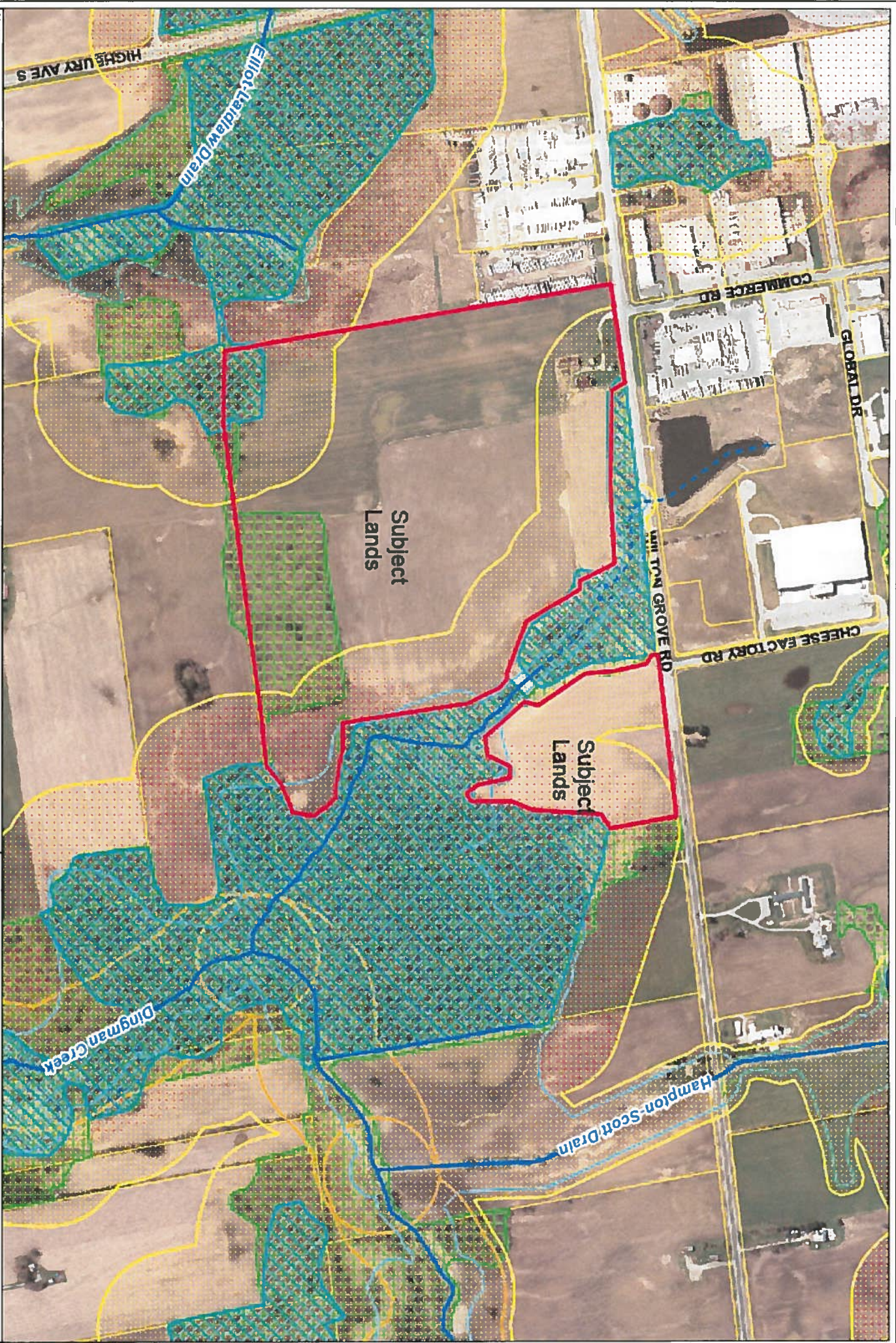


Regulation Limit

Regulation under s. 29 of the Conservation Authorities Act
 Development interference with wetlands, and alterations
 to shorelines and watercourses. O. Reg. 157/06, 97/04.

Legend

- Watercourse**
 - Open
 - Tiled
- Wetland Hazard**
- London Hazard**
 - FLD250
 - Remnant Valley
 - Stable Slope
 - Toe Erosion - Stable Slope
 - Top of Slope
- Flooding Hazard**
- Erosion Hazard (Detail)**
- Wetland Interference (2009)**
- Regulation Limit 2015**
- Middlesex NHSS (2014)**
 - No Criteria Met
 - 1+ Criteria Met
- Wetlands (MNR)**
 - Evaluated-Provincial
 - Evaluated-Other
 - Not Evaluated
- Assessment Parcel (MPAC)**



Notes:
 Baker Lands, London - Regs & Natural Heritage

*Please note: Any reference to scale on this map is only approximate, when it is printed landscape or legal sized (8.5" x 11") paper.



The Regulation Limit depicted on this map schedule is a representation of O. Reg. 157/06 under O. Reg. 97/04. The Regulation Limit is a conservative estimation of the hazard lands within the UTRCA watershed. Depending on the specific characteristics of the hazard land and the land use proposed, the Regulation Limit may be subject to change. The UTRCA disclaims explicitly any warranty, representation or guarantee as to the content, sequence, accuracy, timeliness, fitness for a particular purpose, merchantability or completeness of any of the data depicted and provided herein. The UTRCA assumes no liability for any errors, omissions or inaccuracies in the information provided herein and further assumes no liability for any decisions made or actions taken or not taken by any person in reliance upon the information and data furnished hereunder. This map is not a substitute for professional advice. Please contact UTRCA staff for any changes, updates and amendments to the information provided. This document is not a Plan of Survey. Sources: Data used under license with the Ontario Ministry of Natural Resources, Copyright © Queen's Printer for Ontario, City of London, 2006 Aerial Photography, Copyright © 2006 First Base Solutions.

UPPER THAMES RIVER
CONSERVATION AUTHORITY
 Copyright ©2015 UTRCA.