

--	--

<b>TO:</b>	<b>CHAIR AND MEMBERS CIVIC WORKS COMMITTEE MEETING ON NOVEMBER 3, 2015</b>
<b>FROM:</b>	<b>JOHN BRAAM, P.ENG. MANAGING DIRECTOR, ENVIRONMENTAL &amp; ENGINEERING SERVICES AND CITY ENGINEER</b>
<b>SUBJECT:</b>	<b>KIWANIS PARK PATHWAY CONNECTION ACROSS CANADIAN NATIONAL RAILWAY DETAILED DESIGN APPOINTMENT OF CONSULTING ENGINEER</b>

<b>RECOMMENDATION</b>
-----------------------

That on the recommendation of the Managing Director, Environmental & Engineering Services and City Engineer, the following actions **BE TAKEN** with respect to the Kiwanis Park Pathway Connection Across Canadian National Railway:

- (a) AECOM Canada Ltd. **BE APPOINTED** Consulting Engineers to complete the detailed design, tender and contract documents of the said project in the amount of \$264,696 (excluding H.S.T.), in accordance with Section 15.2 (g) of the Procurement of Goods and Services Policy;
- (b) the financing for this project **BE APPROVED** as set out in the Sources of Financing Report attached hereto as Appendix A;
- (c) the Civic Administration **BE AUTHORIZED** to undertake all the administrative acts that are necessary in connection with this project;
- (d) the approvals given herein **BE CONDITIONAL** upon the Corporation entering into a formal contract with the consultant for the work; and,
- (e) the Mayor and City Clerk **BE AUTHORIZED** to execute any contract or other documents, if required, to give effect to these recommendations.

<b>PREVIOUS REPORTS PERTINENT TO THIS MATTER</b>
--

- Community & Protective Services Committee Report – April 21, 2015 - Pedestrian Pathway Connection Across Canadian National Railway Lands in Kiwanis Park Municipal Class Environmental Assessment
- Community & Protective Services Committee - June 17, 2013 - Appointment of consulting engineers to conduct an environmental study for the purpose of determining a viable pedestrian pathway connection across Canadian National Railway lands in Kiwanis Park, south of Trafalgar Road.

--	--

**2015-19 STRATEGIC PLAN**

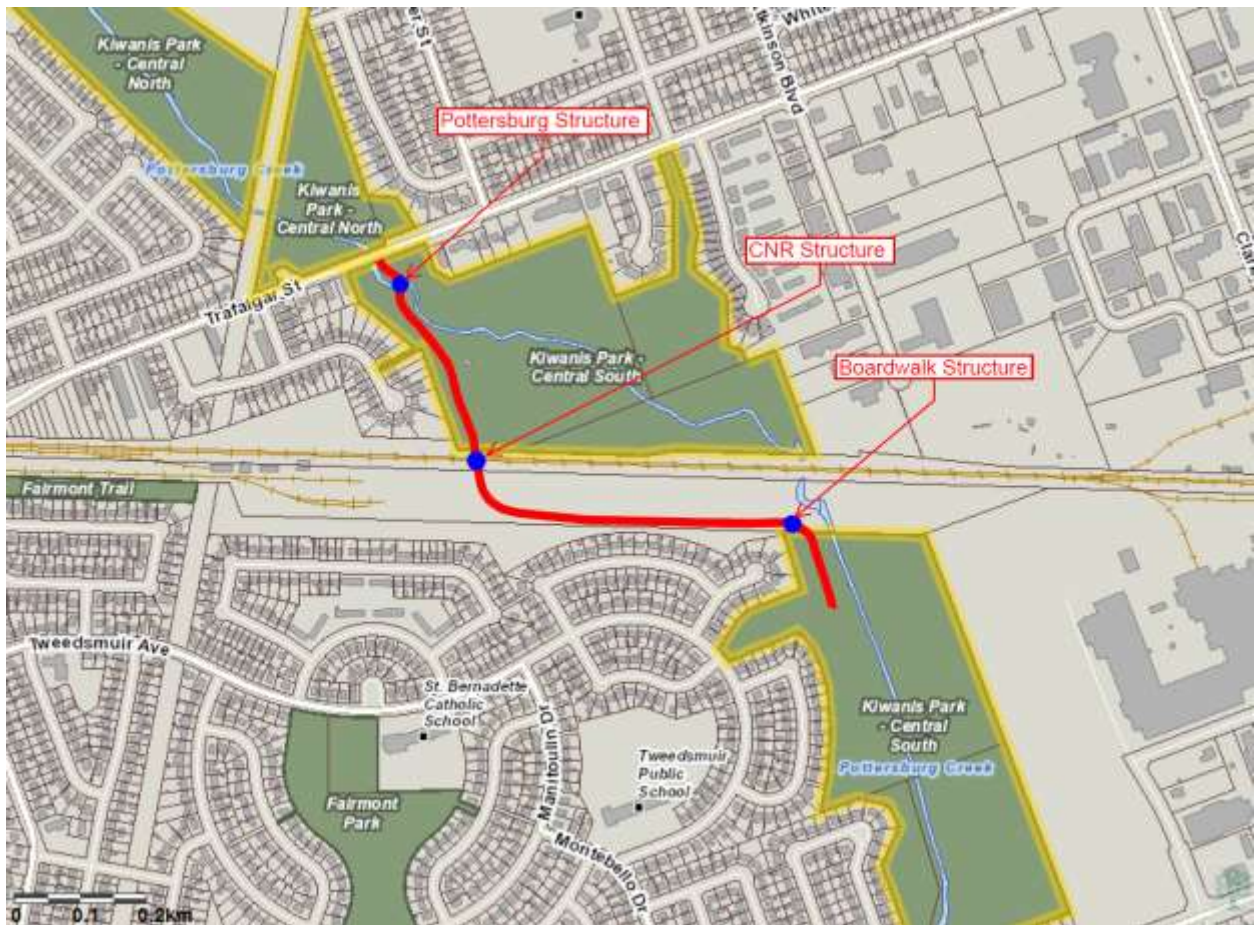
The following report supports the Strategic Plan through the strategic focus areas of *Strengthening Our Community* and *Building a Sustainable City* by improving mobility and safety for cyclists and pedestrians through the completion of an important link in the overall recreational pathway system, while also encouraging a more active community.

**BACKGROUND**

**Purpose**

This report seeks the approval of the Municipal Council to retain an engineering consultant to undertake the detailed design and contract preparation for the extension of the Kiwanis Park Pathway across the Canadian National Railway (CNR) between Trafalgar Street and Tweedsmuir Avenue as displayed in Figure 1.

**Figure 1: Project Area**



**Context**

Addressing gaps in the City’s recreational pathway system is a high priority as identified in the Parks and Recreation Strategic Master Plan and the draft London Plan.

--	--

In Kiwanis Park, the only remaining uncompleted gap is located between Trafalgar Street and Tweedsmuir Avenue, due to the presence of the CNR railway that bisects the entire park. To address this gap, a Schedule “B” Municipal Class Environmental Assessment (EA) and Environmental Impact Study were recently completed. This EA confirmed the need for a direct multi-use pathway linkage across the CNR lands and recommended a multi-use pathway bridge over the CNR line and a bridge over Pottersburg Creek.

<b>DISCUSSION</b>
-------------------

**Project Description**

Kiwanis Park is a long linear park that extends from Dundas Street to Hamilton Road and links the surrounding community to the Thames Valley Corridor. The central south portion of Kiwanis Park is currently bisected by the CNR corridor resulting in a lack of direct connection between the north and south portion of the park, poor pedestrian/cyclist infrastructure connectivity and serious safety concerns with illegal trespassing along a high capacity freight train and Via Rail corridor.

This project will improve cyclist and pedestrian safety by eliminating the need for Kiwanis Park pathway users to detour along 2.2 km of local and arterial roads. The EA recommended pathway structures over Pottersburg Creek and CNR track that will separate pedestrians and cyclists from vehicular and rail traffic. The construction of the multi-use pathway will also link neighbourhoods surrounding Pottersburg Creek to the Thames Valley Parkway (TVP) multi-use pathway system.

The project limits extend from Trafalgar Street to the existing pathway near Tweedsmuir Avenue. The proposed extension to the pathway system is approximately 1 km in length.

The primary deliverables for this detailed design assignment include field investigations, design, approvals, contract preparation and property easement acquisition support. Particular focus areas for the assignment include:

- A new pathway railway grade separation in accordance with CNR requirements;
- A new bridge crossing over Pottersburg creek and an elevated boardwalk south of the CNR;
- Adjustments to the existing pathway underneath the Trafalgar Street structure and new pathway design from south of Trafalgar Street to the pathway terminus;
- Stormwater management and drainage analysis and design;
- Property/easement acquisition support on CNR lands; and,
- Preparation of the complete tender package, including advertisement, review of the submitted tenders for completeness, and contractor recommendation.

Funding to support the detailed design phase of this project is available within the Planning Department existing capital program to maintain the Thames Valley Parkway.

--	--

## **Ontario Municipal Cycling Infrastructure Program**

The Ontario Municipal Cycling Infrastructure Program (OMCIP), is a new provincial funding program to promote the implementation of municipal cycling infrastructure to achieve the vision of #CycleON: Ontario's Cycling Strategy.

Ontario municipalities are eligible to apply to the Ministry of Transportation once for OMCIP Funds up to 50% of total cost of a cycling infrastructure project. The maximum provincial funding is \$325,000 for any given applicant.

An Expression of Interest had been submitted by the City detailing the rail crossing in this project. The City received notification that the project has been shortlisted and a response to Request for Proposal has been requested. The program requires that implementation of the municipal projects be completed by March 31, 2018 in order to be eligible for the OMCIP Funds. Design of the project must begin immediately to meet this deadline if the OMCIP application is approved.

### **Consultant Selection**

AECOM Canada Limited completed successfully the EA for the Kiwanis Park Pathway extension across CNR. AECOM Canada Limited was selected to undertake the EA after a competitive consultant procurement process in accordance with the procurement of Goods and Services Policy Section 15.2 (d) in which six (6) firms were invited to submit detailed proposals.

AECOM Canada Limited performance during the EA was positive and detailed knowledge of the Kiwanis Park corridor was obtained. Appointment of AECOM Canada Limited as the consulting engineer for the design phase creates efficiencies providing financial advantage to the City by eliminating duplication that would be required if another firm were introduced. Considering the performance of AECOM Canada Limited, a design proposal was requested and scope and fees were negotiated. AECOM Canada Limited experience with similar design projects and detailed knowledge of Kiwanis Park and Pottersburg Creek corridor combined with a project proposal that demonstrated a thorough understanding of the goals and objectives illustrated the suitability for the undertaking. The firm is familiar with City staff and procedures through other projects with the City.

In light of the above, AECOM Canada Limited provides the best value for the City to complete the detailed design and contract preparation for the Kiwanis Park Pathway. Subject to successful completion of the design phase of this project, AECOM Canada Limited will be considered for the construction administration stage.

--	--

<b>CONCLUSION</b>
-------------------

The EA for the Kiwanis Park Pathway was completed by AECOM Canada Limited. The EA was prepared with input from residents, external agencies, utilities, CNR and other stakeholders.

It is recommended that AECOM Canada Limited be awarded the consulting assignment for the detailed design and tendering of the Kiwanis Park Pathway, in the amount of \$264,696 (excluding HST).

**Acknowledgements**

This report was prepared with the assistance of Ardian Spahiu, P.Eng., Transportation Design Engineer and Jeff Bruin, OALA, CSLA, Landscape Architect, of the Transportation Planning & Design Division and Environmental and Parks Planning Department respectively.

<b>PREPARED BY:</b>	<b>REVIEWED AND CONCURRED BY:</b>
<b>DOUG MACRAE, P.ENG DIVISION MANAGER, TRANSPORTATION PLANNING &amp; DESIGN</b>	<b>EDWARD SOLDO, P.ENG. DIRECTOR, ROADS AND TRANSPORTATION</b>
<b>RECOMMENDED BY:</b>	
<b>JOHN BRAAM, P.ENG. MANAGING DIRECTOR, ENVIRONMENTAL AND ENGINEERING SERVICES &amp; CITY ENGINEER</b>	

Attach: Appendix A – Source of Financing

- cc. Tony Fediw, AECOM Canada Ltd., 250 York St, London, ON, N6A 6K2
- John Fleming, Managing Director, Planning and City Planner
- Pat Shack, Finance