

Westminster Working Group - Community Connections



Westminster Ponds/Pond Mills ESA
October 20, 2015



London
CANADA

The Westminster Working Group

Dedicated to helping children, youth and families live a healthier life.

Neighbourhood Action Plan in 2010 to target 5 priority areas:

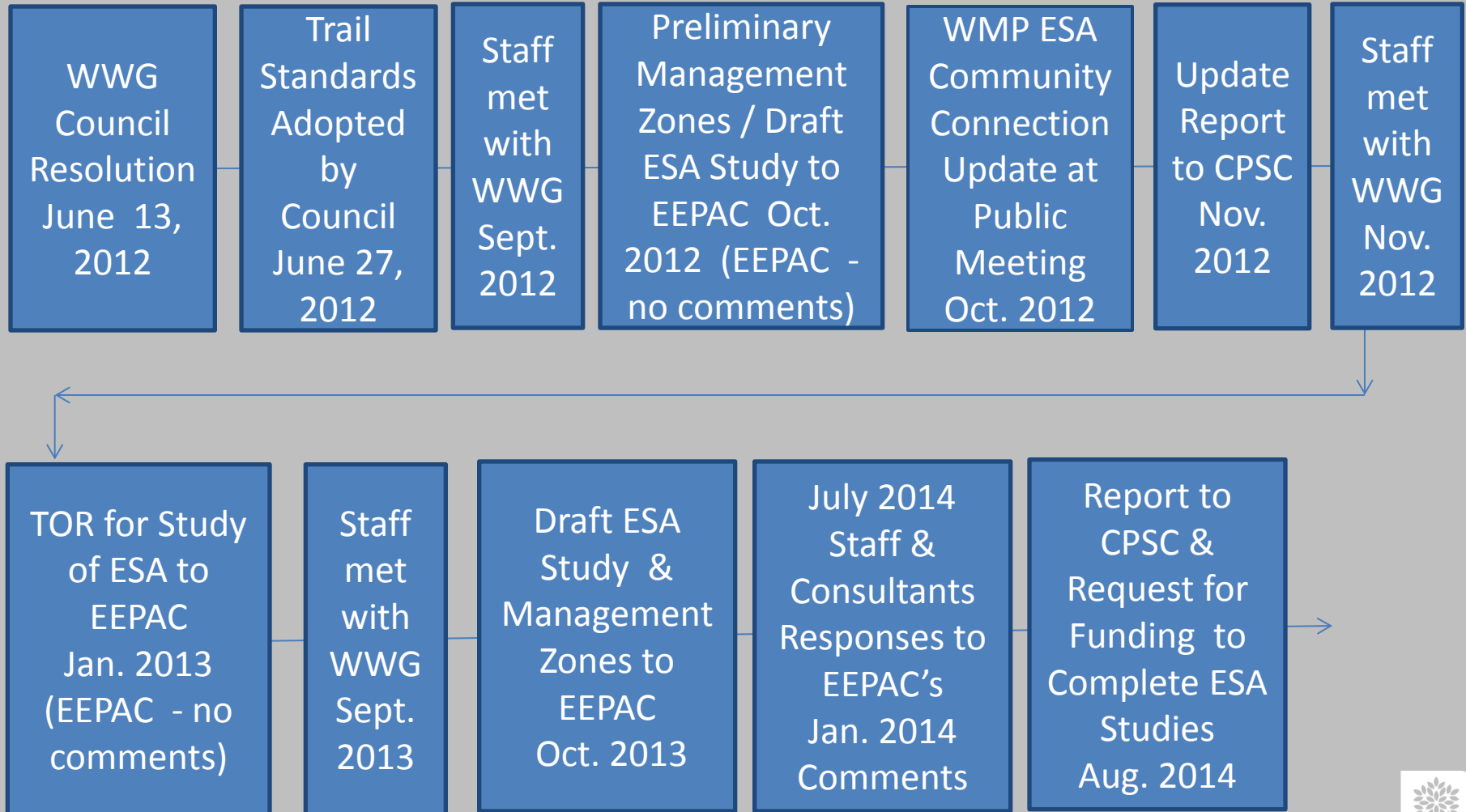
- Urban Planning
- Public Safety
- Active Transportation and Accessibility
- Availability of Food
- Physical Activity Opportunities



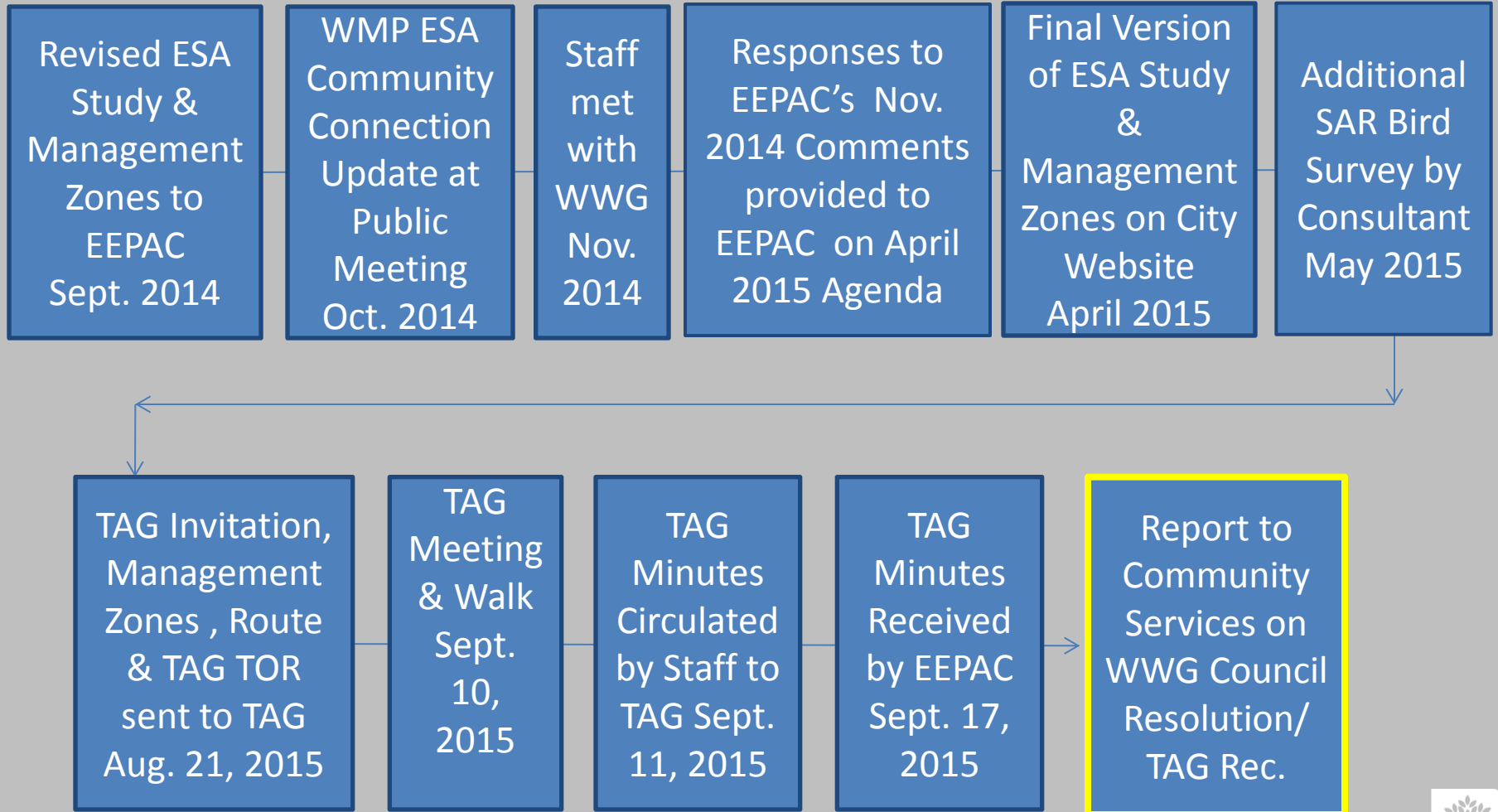
Council Resolution June 13, 2012

That the Civic Administration BE DIRECTED to work with the Westminster Working Group to develop a proposal, and business case, for a multi-use pathway from the Westminster neighbourhood to Commissioners Road, and report back to the Community Services Committee (CSC) within six months; it being noted that a petition with approximately 200 signatures supporting this endeavour was submitted to the CSC (petition is available for viewing in the City Clerks' office); it being further noted that the CSC received a presentation from S. Sinclair, Westminster Working Group Member, with respect to this matter.

Process to Date



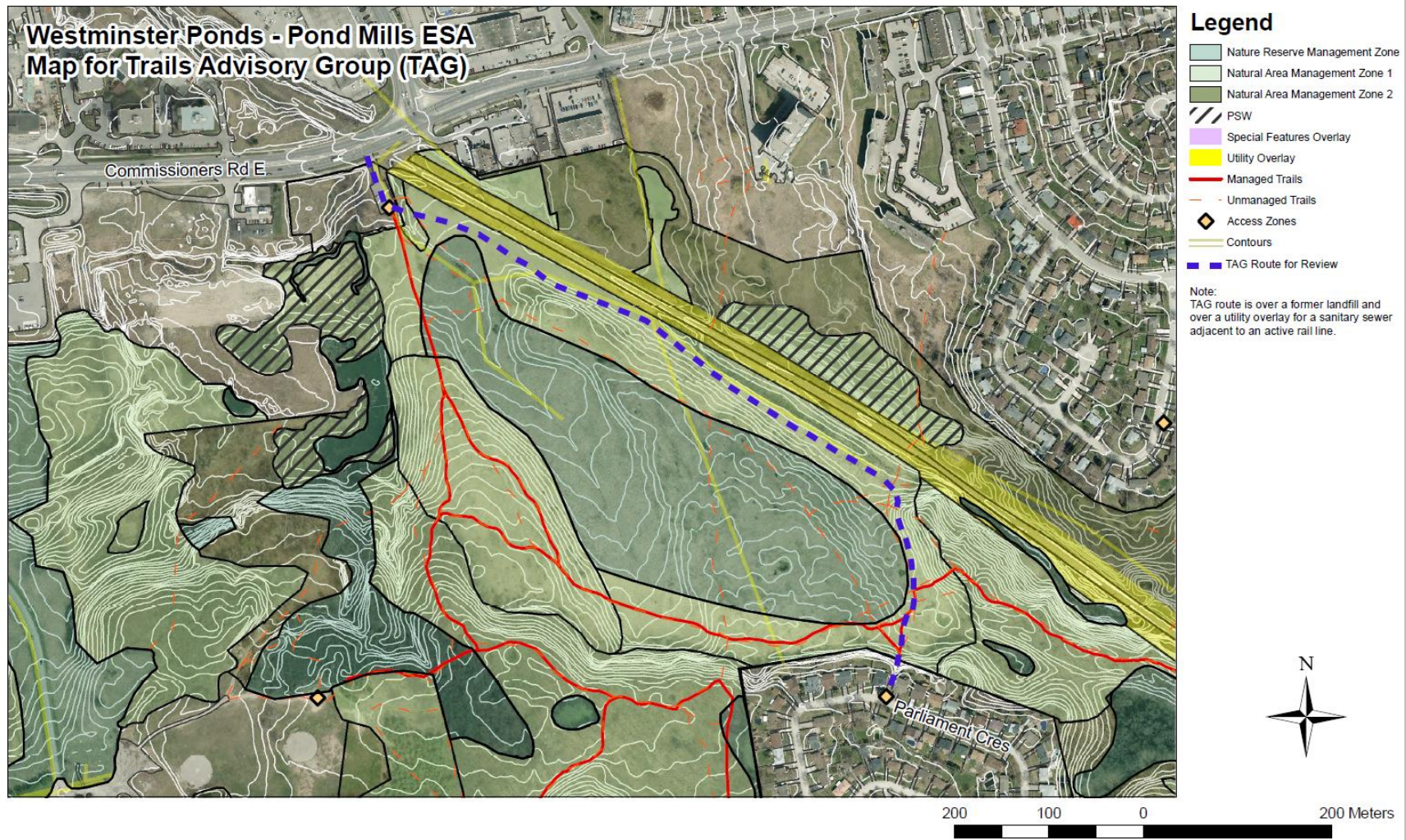
Process to Date



Trails Advisory Group

- A 2012 Council resolution specifies that; an ESA Trails Advisory Group be established representing all user groups with diverse membership, including the Thames Valley Trail Association, to comment on any trail related issues in ESAs that were not addressed or contemplated in the most current Conservation Master Plans.
- TAG members present on September 10th 2015 (and those who were invited but not did not attend*) included a representative from each of the member groups:
 - Thames Valley Trail Association
 - EEPAC
 - Nature London
 - Upper Thames River Conservation Authority
 - Accessibility and Advisory Committee*
 - Westminster Working Group (local community group)
 - Adopt an ESA Group (Westminster Ponds / Pond Mills ESA)
 - City Ecologist (facilitator)

Pathway Route Recommended by WWG & TAG





London
CANADA