

Bill No. 347
2015

By-law No. C.P.-1284(____)-__

A by-law to amend the Official Plan for the City of London, 1989 relating to 2150 Oxford Street East.

The Municipal Council of The Corporation of the City of London enacts as follows:

1. Amendment No. _____ to the Official Plan for the City of London Planning Area – 1989, as contained in the text attached hereto and forming part of this by-law, is adopted.
2. This by-law shall come into effect in accordance with subsection 17(38) of the *Planning Act, R.S.O. 1990, c.P.13*.

PASSED in Open Council on October 13, 2015.

Matt Brown
Mayor

Catharine Saunders
City Clerk

First Reading – October 13, 2015
Second Reading – October 13, 2015
Third Reading – October 13, 2015

AMENDMENT NO. _____

to the

OFFICIAL PLAN FOR THE CITY OF LONDON

A. PURPOSE OF THIS AMENDMENT

The purpose of this Amendment is:

1. To change the “Regulatory Floodline” and “Conservation Authority Regulation Limit” on Schedule “B-2”, Natural Resources and Natural Hazards.

B. LOCATION OF THIS AMENDMENT

1. This Amendment applies to lands located at 2150 Oxford Street East in the City of London.

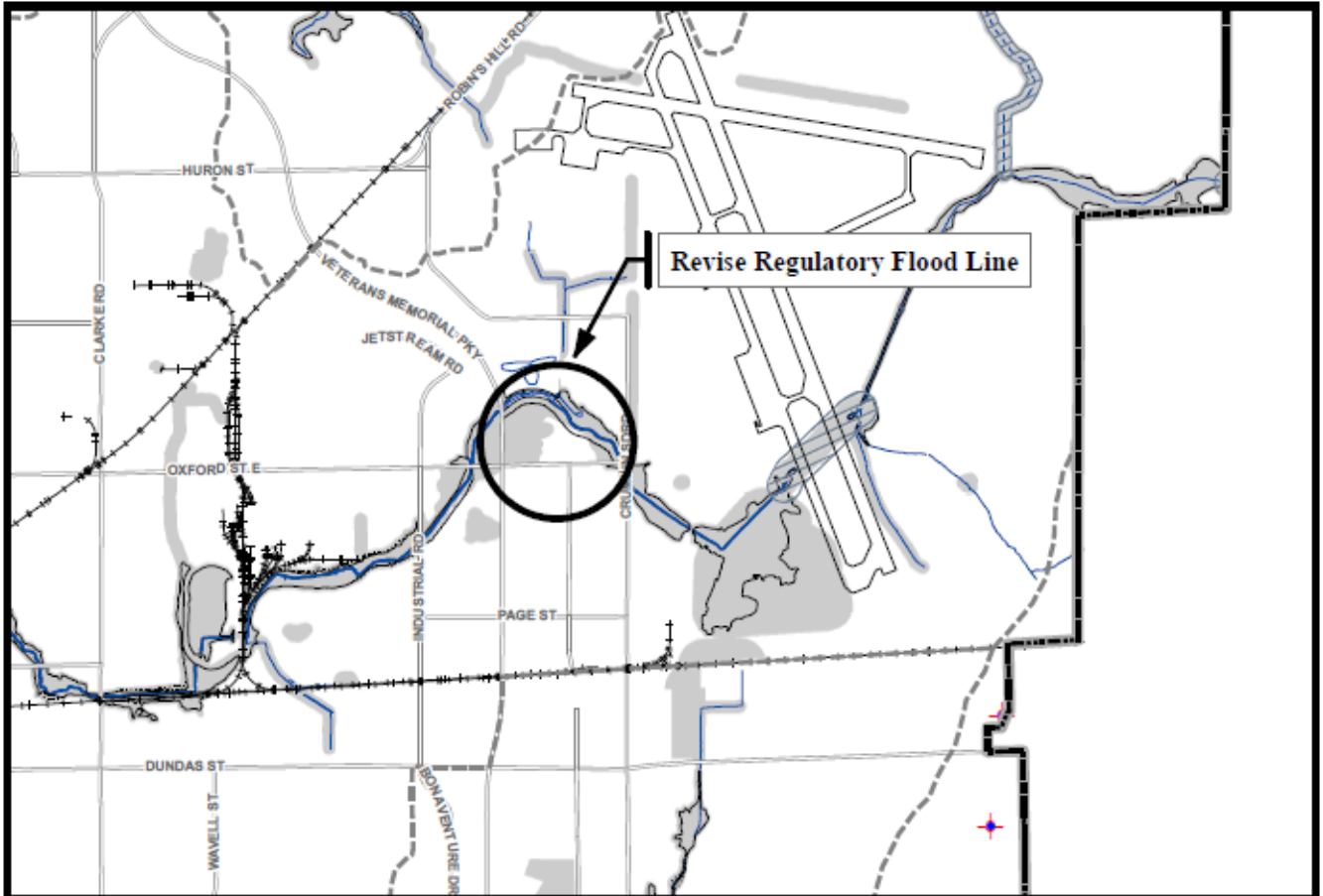
C. BASIS OF THE AMENDMENT

Works associated with the Pottersburg Creek subwatershed study and Municipal Class Environmental Assessment have improved servicing, including storm drainage and channel remediation, in the Pottersburg Creek and Skyway Industrial Park area. It is for these reasons that the impact of floods and the flood plain line is to be reduced. Consequently, the purpose of the application is to adjust the regulatory flood plain mapping and thus increase the supply of developable industrial land on the subject property at 2150 Oxford Street East.

D. THE AMENDMENT

The Official Plan for the City of London is hereby amended as follows:

1. Schedule “B2”, Natural Resources and Natural Hazards, to the Official Plan for the City of London Planning Area is amended by changing the “Regulatory Floodline” and “Conservation Authority Regulation Limit” at 2150 Oxford Street East in the City of London, as indicated on “Schedule 1” attached hereto.



NATURAL RESOURCES

- Aggregate Resource Areas
- Extractive Industrial
- Emergency Municipal Water Wells

Base Map Features

- Railways
- Water Courses/Ponds
- Streets (refer to Schedule "C")
- Conservation Authority Boundary
- Subwatershed Boundary
- Potential Special Policy Areas
- Special Policy Area

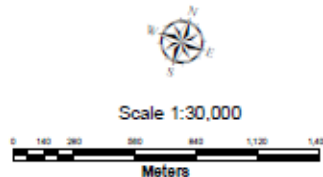
NATURAL HAZARDS

- Regulatory Flood Line
NOTE 1: Flood Lines shown on this map are approximate. The precise delineation of flood plain mapping is available from the Conservation Authority having jurisdiction.
NOTE 2: Flood Fringe mapping for certain areas of the city is available from the Upper Thames River Conservation Authority.
- Riverine Erosion Hazard Limit For Confined Systems
- Riverine Erosion Hazard Limit For Unconfined Systems
- Steep Slopes Outside of the Riverine Erosion Hazard Limit
- Abandoned Oil/Gas Wells
- Conservation Authority Regulation Limit

This is an excerpt from the Planning Division's working consolidation of Schedule B2 to the City of London Official Plan, with added notations.

**SCHEDULE 1
TO
OFFICIAL PLAN**
AMENDMENT NO. _____

PREPARED BY: Graphics and Information Services



FILE NUMBER: OZ-8510
PLANNER: TM
TECHNICIAN: MB
DATE: 2015/09/01