



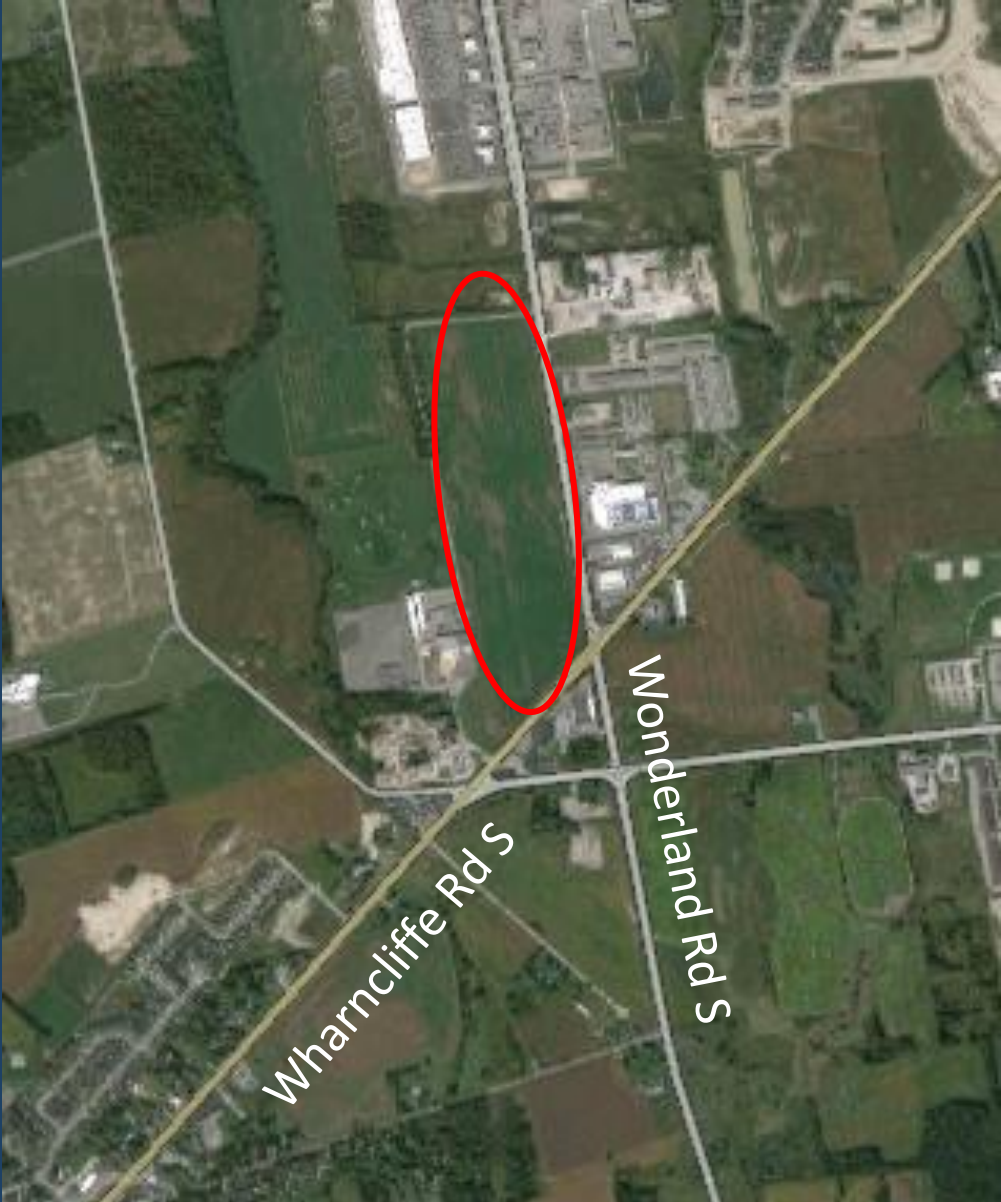
Proposed Commercial Centre

1279059 Ontario Inc.
CLF1 (Wonderland Road) Inc.
1699259 Ontario Inc.

3313-3450 Wonderland Road South
and 1789 Wharncliffe Road South



Site Location





Development Vision

An exceptional regional-scale shopping destination





Presentation Plan



Connectivity



- Multiple site entrances encourage future transit use
- Strong pedestrian connections
- Grid pattern design
- Future road connection to the west



Landscape Concept





Landscape Elements

- Integrate community plazas to enhance pedestrian environment
- Introduce hard/soft materials and decorative features to frame major entrances, enhance street and building frontages and define pedestrian walkways
- Utilize landscaped islands to 'soften' large parking areas





Next Steps:

- Address comments received via Public Site Plan Meeting
- Finalize site plan addressing outstanding issues
- Receive site plan approval and remove holding provisions
- Execute site plan agreement and proceed with construction