

Bill No. 311  
2015

By-law No. C.P.-1284(\_\_)-\_\_

A by-law to amend the Official Plan for the City of London, 1989 relating to 2760 Sunningdale Road East.

The Municipal Council of The Corporation of the City of London enacts as follows:

1. Amendment No. \_\_\_\_\_ to the Official Plan for the City of London Planning Area – 1989, as contained in the text attached hereto and forming part of this by-law, is adopted.
2. This by-law shall come into effect in accordance with subsection 17(38) of the *Planning Act, R.S.O. 1990, c.P.13*.

PASSED in Open Council on September 15, 2015.

Matt Brown  
Mayor

Catharine Saunders  
City Clerk

First Reading – September 15, 2015  
Second Reading – September 15, 2015  
Third Reading – September 15, 2015

**AMENDMENT NO. \_\_\_\_\_**

**to the**

**OFFICIAL PLAN FOR THE CITY OF LONDON**

**A. PURPOSE OF THIS AMENDMENT**

The purpose of this Amendment is:

1. To change the designation of certain lands described herein from “Aggregate Resource Area” to “Extractive Industrial” on Schedule “B-2”, Natural Hazards and Natural Resources, to the Official Plan for the City of London.

**B. LOCATION OF THIS AMENDMENT**

1. This Amendment applies to lands located at 2760 Sunningdale Road East in the City of London.

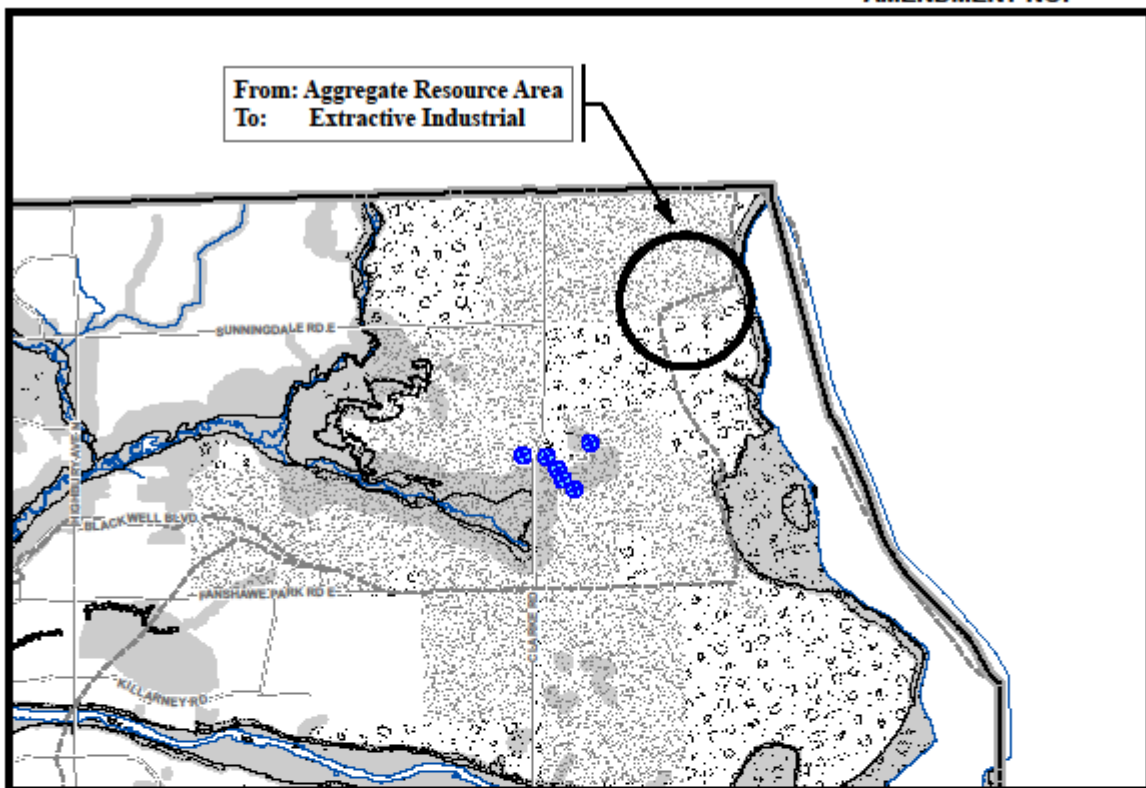
**C. BASIS OF THE AMENDMENT**

1. The recommended Official Plan Amendment is appropriate as the subject lands are in an area identified as containing an aggregate resource.
2. Licensed pit operations (Stead-Day Pit) exist in the adjacent property to the west and north of this property. The recommended Official Plan Amendment would permit uses that are appropriate with the surrounding aggregate extraction and recreation uses.
3. The proposed aggregate resource extraction is consistent with the Policies of Section 2.5 Mineral Aggregate Resources of the Provincial Policy Statement, 2014, specifically sections 2.5.2.1 to provide opportunities for aggregate resource extraction as close to market as possible, and section 2.5.2.2, to minimize social, economic and environmental impacts associated with aggregate extraction.
4. The proposed aggregate resource extraction is consistent with the policies of the Official Plan.

**D. THE AMENDMENT**

The Official Plan for the City of London is hereby amended as follows:

1. Schedule “B-2”, Natural Hazards and Natural Resources, to the Official Plan for the City of London Planning Area is amended by designating those lands located at 2760 Sunningdale Road East in the City of London, as indicated on “Schedule 1” attached hereto from “Aggregate Resource Area” to “Extractive Industrial”.



**NATURAL RESOURCES**

- Aggregate Resource Areas
- Extractive Industrial
- Emergency Municipal Water Wells

**Base Map Features**

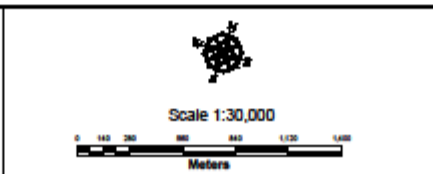
- Railways
- Water Courses/Ponds
- Streets (refer to Schedule "C")
- Conservation Authority Boundary
- Subwatershed Boundary
- Potential Special Policy Areas
- Special Policy Area

**NATURAL HAZARDS**

- Regulatory Flood Line  
*NOTE 1: Flood Lines shown on this map are approximate. The precise delineation of flood plain mapping is available from the Conservation Authority having jurisdiction.*  
*NOTE 2: Flood Fringe mapping for certain areas of the city is available from the Upper Thames River Conservation Authority.*
- Riverine Erosion Hazard Limit For Confined Systems
- Riverine Erosion Hazard Limit For Unconfined Systems
- Steep Slopes Outside of the Riverine Erosion Hazard Limit
- Abandoned Oil/Gas Wells
- Conservation Authority Regulation Limit

*This is an excerpt from the Planning Division's working consolidation of Schedule B2 to the City of London Official Plan, with added notations.*

**SCHEDULE 1  
TO  
OFFICIAL PLAN**  
AMENDMENT NO. \_\_\_\_\_  
PREPARED BY: Graphics and Information Services



FILE NUMBER: OZ-8464  
PLANNER: GB  
TECHNICIAN: MB  
DATE: 2015/08/05