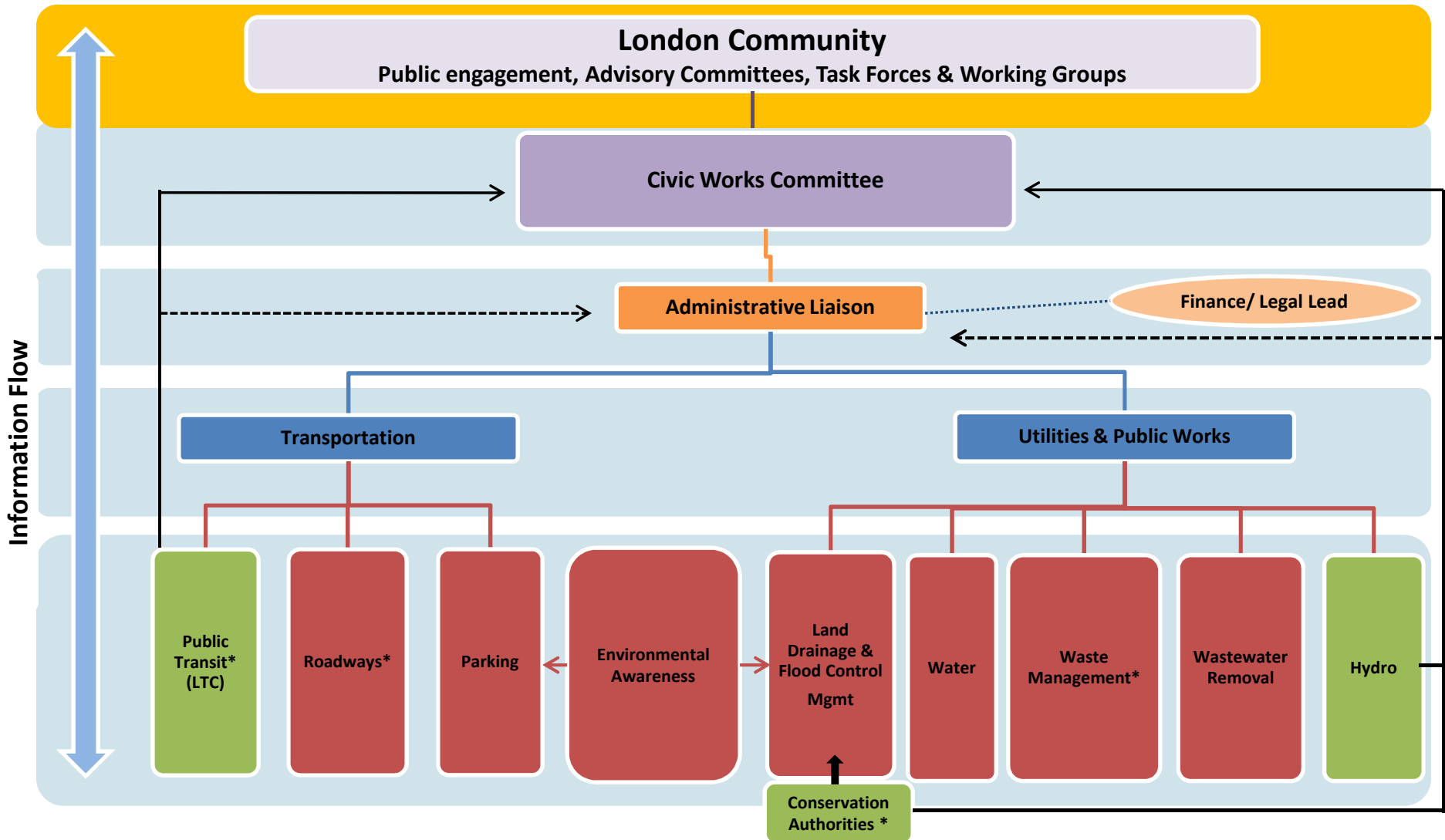


Civic Works Committee



Boards & Commissions reporting: London Transit Commission, London Hydro, Conservation Authorities

To report and make recommendations to Council on matters pertaining to the Planning Act, excluding city-wide policy matters and Master Plans. City-wide policy matters and Master Plans would be considered by the Strategy & Policy Committee.

15/02/2012

Confidential Draft Recommendation



Presentation to Civic Works Committee



Primary Businesses

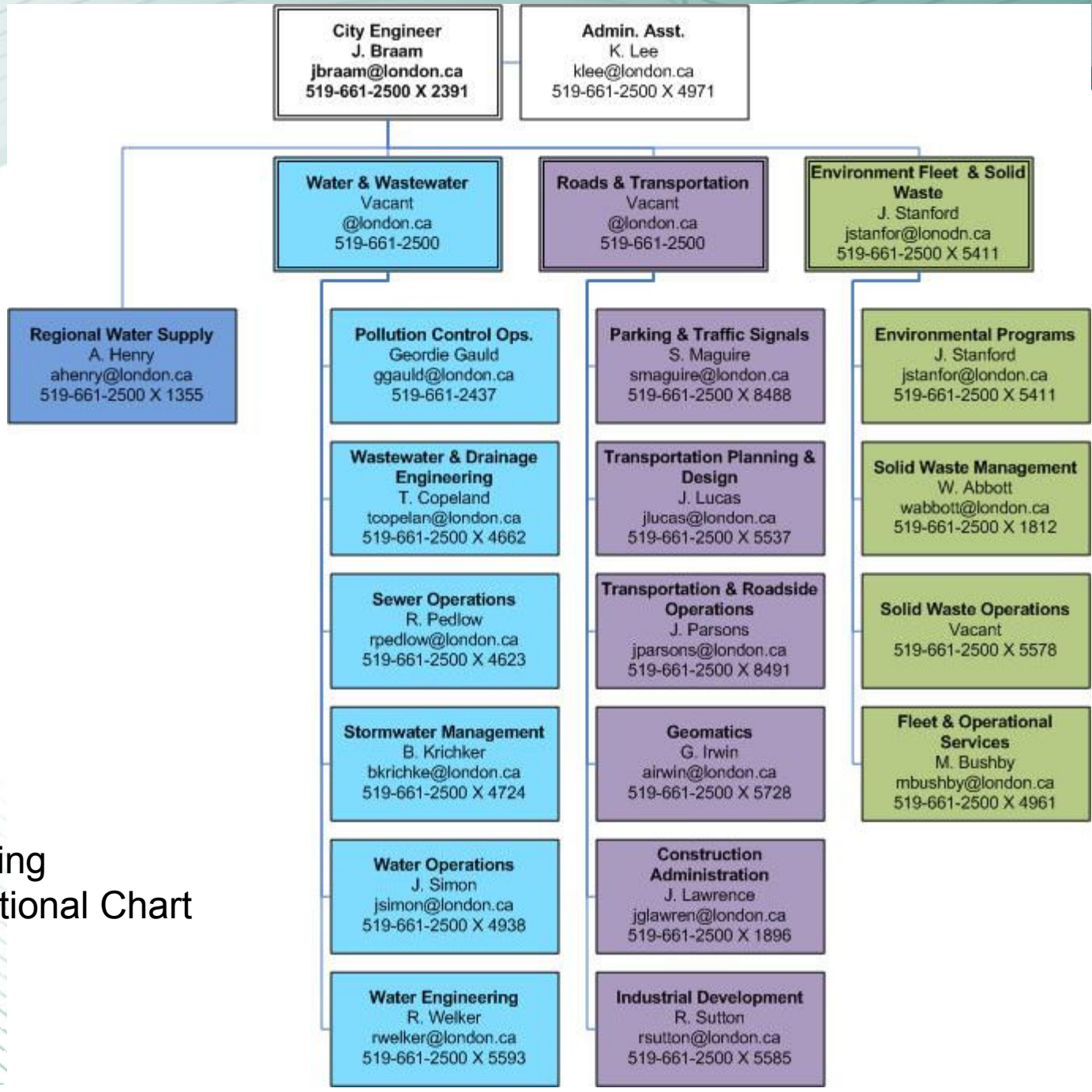
1. Water
2. Sewers
3. Roads
4. Solid Waste





Technical Support & Cross-Corporation Businesses

- 1. Fleet**
- 2. Construction Administration**
- 3. Environmental Programs**
- 4. Geomatics & Survey**
- 5. Customer Relations & Dispatch**



Engineering
Organizational Chart



Legislation

- **Environmental Protection Act**
- **Environmental Assessment Act**
- **Ontario Water Resources Act**
- **Safe Drinkwater Act**
- **Water Opportunities Act**
- **Nutrient Management Act**
- **Sustainable Water and Sewage System Act**
- **Canadian Environmental Protection Act (Federal)**
- **Fisheries Act (Federal)**
- **Great Lakes Charter Annex (International)**
- **Green energy Act**



Legislation

- **Municipal Act**
- **Highway Traffic Act**
- **Minimum Maintenance Standard for Municipal Highway**
- **Code of Practice for the Environmental Management of Road Salts (Federal)**
- **Occupational Health and Safety Act**
- **Building Code**
- **Employment Standards**
- **Emergency Management and Civil Protection Act**
- **Dangerous Goods Transportation Act**



Water and Wastewater Services

Fundamental public services

- Public Health
- Fire Protection
 - Saves lives
- Environmental Protection
 - Thames River / tributaries
- Industry / business / Residential





Water and Wastewater Objectives

Protect Our Environment

Invest in Our Community

Responsible Long Term Planning

Environmental Leadership

Infrastructure Renewal and Expansion

Financial Stability

Meet or Exceed Ministry of the Environment Regulatory Standards

Water, Sanitary and Storm System Structural Integrity

Environmentally responsible operation of Pumping Stations and Treatment Facilities

Rebuilding the Water & Sewer System to reach Sustainability

Proactive Water, Storm and Sewer Management

Maintain Municipal Drainage

Sound 20 Year Operational Plan

Sustainable 20 Year Capital Plan

Responsible Financial Management



Wastewater

- **Wastewater Stormwater Engineering**
- **Sewer Operations**
- **Wastewater Treatment**
- **Operating Budget of \$34 million**
- **Capital Budget of \$58 million**
- **Infrastructure Value of \$3.6 billion**



Water and Wastewater



Geordie Gauld
PCP
Operations



Berta Krichker
Storm Water Mgmt.



Tom Copeland
WW & Drainage
Engineering



Rick Pedlow
Sewer Operations



Wastewater & Drainage Engineering



Medway Trunk Sanitary Sewer



Regent Street PDC and tree



Edward Area Street Storm Sewer



Medway Trunk Sanitary Sewer



Barrier Work along Thames River



Looking east on Devonshire Ave. at the installation of the deep sanitary trunk sewer.

9m deep Sanitary Sewer using double trench box on Devonshire



Sewer Operations



Wortley Road ~ sanitary sewer construction



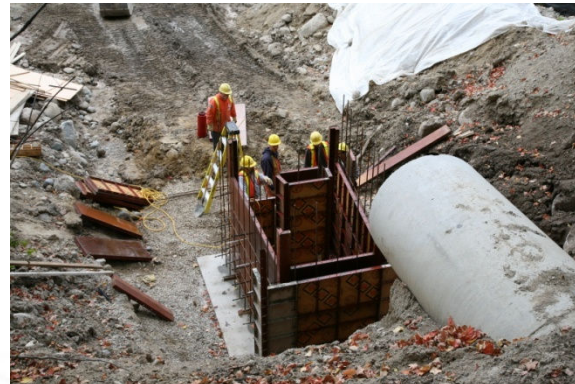
Catchbasin Cleaning



Manhole Benching



Becher Street ~ old brick manhole



Headwall Construction



Flusher and Vector



Pollution Control Operations



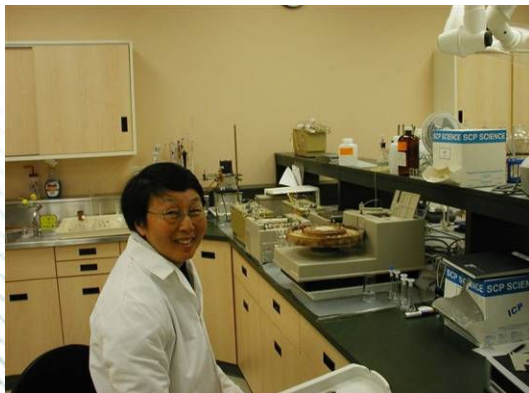
Oxford PCP



Winter Thames River looking at Greenway



Ultraviolet System

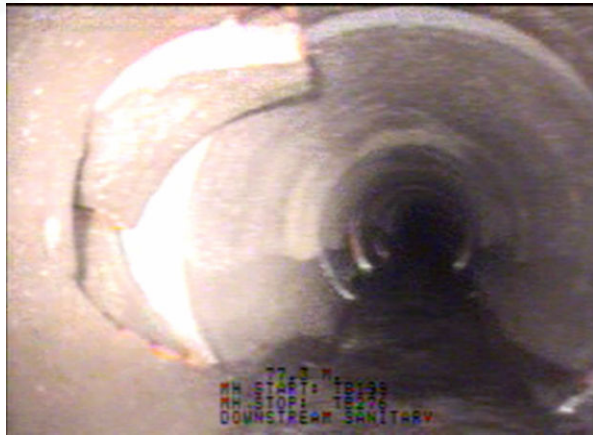


Technician Auto Analyser



Greenway PCP Aerial

Taking a Look Underground



Adelaide Street ~ downstream sanitary



Bruce Street pdc ~ broken



Ridout Street ~ defective junction



Adelaide Street ~ downstream sanitary



Wolsley Avenue ~ joint displaced



Ridout Street ~ broken at joint



What you will hear about in 2012....

- Wastewater Treatment Capacity Upgrades
- Response to Global Climate Change Issues Impacting Wastewater & Treatment
- International Water Centre of Excellence (Wastewater Technology Centre at Greenway)
- Basement Flooding Initiatives



Water and Wastewater



Andrew Henry
Regional Water Supply



John Simon
Water Operations



Roland Welker
Water Engineering



Water

- **Regional Water Supply**
- **Water Engineering**
- **Water Operations**
- **Operating Budget of \$83.6 million**
- **Capital Budget of \$59.4 million**
- **Infrastructure Value of \$1.8 billion**

Regional Water Supply Division

- Administration of the Lake Huron and the Elgin Area Primary Water Supply Systems
- Governed through a board of management for each system
- Provide the water supply (treatment and transmission) to the City of London and 13 other municipalities includes:
 - Planning and engineering for infrastructure replacement and expansion
 - Maintenance and operations – contracted out



Water Operations

- Operate the system
 - Supply Treatment and Quality Control
- Infrastructure Replacement
- Customer service
 - Meters - billing and replacement issues
 - Mainbreaks
 - Lead services
- Maintain the Distribution System
 - Pumping Stations/Reservoirs
 - 1554 Km of watermain
 - 8800 fire hydrant (+2000 private hydrants)
 - 109,000 services/meters
 - 11,000 valves



Water Engineering Division

- Engineering and construction for the assessment, expansion, development of the water system
- Assess condition of existing Infrastructure condition assessment and replacement priority
- Innovative technologies i.e. leak detection, acoustic and CPP fibre optic monitoring, trenchless reconstruction
- Product approval and specifications - new development
- Specialty Studies – 20 year plans, hydraulic and water quality modeling, financial panning, corrosion control strategies, leak assessment , rate development, conservation planning



New Technologies



Reduced excavation
and reinstatement



Proactive inspection
and monitoring





What you will hear about in 2012....

- Conservation and impact on revenue review
- Fixed rate component review
- Asset Management Strategies & Software Support
- Audit requirements
- Fluoridation
- Shared Services review
- Sustainability Management
- Technological developments
- UWL reduction
- Effective Management of Senior Government Stimulus Dollars



ROADS AND TRANSPORTATION



John Parsons
Transportation
Operations



John Lucas
Transportation Engineering



Shane Maguire
Parking and
Traffic Signals



ROADS AND TRANSPORTATION



Gary Irwin
Chief Surveyor
Geomatics



Robert Sutton
Industrial Land
Development



Justin Lawrence
Construction Administration



ROADS AND TRANSPORTATION

\$50M Capital

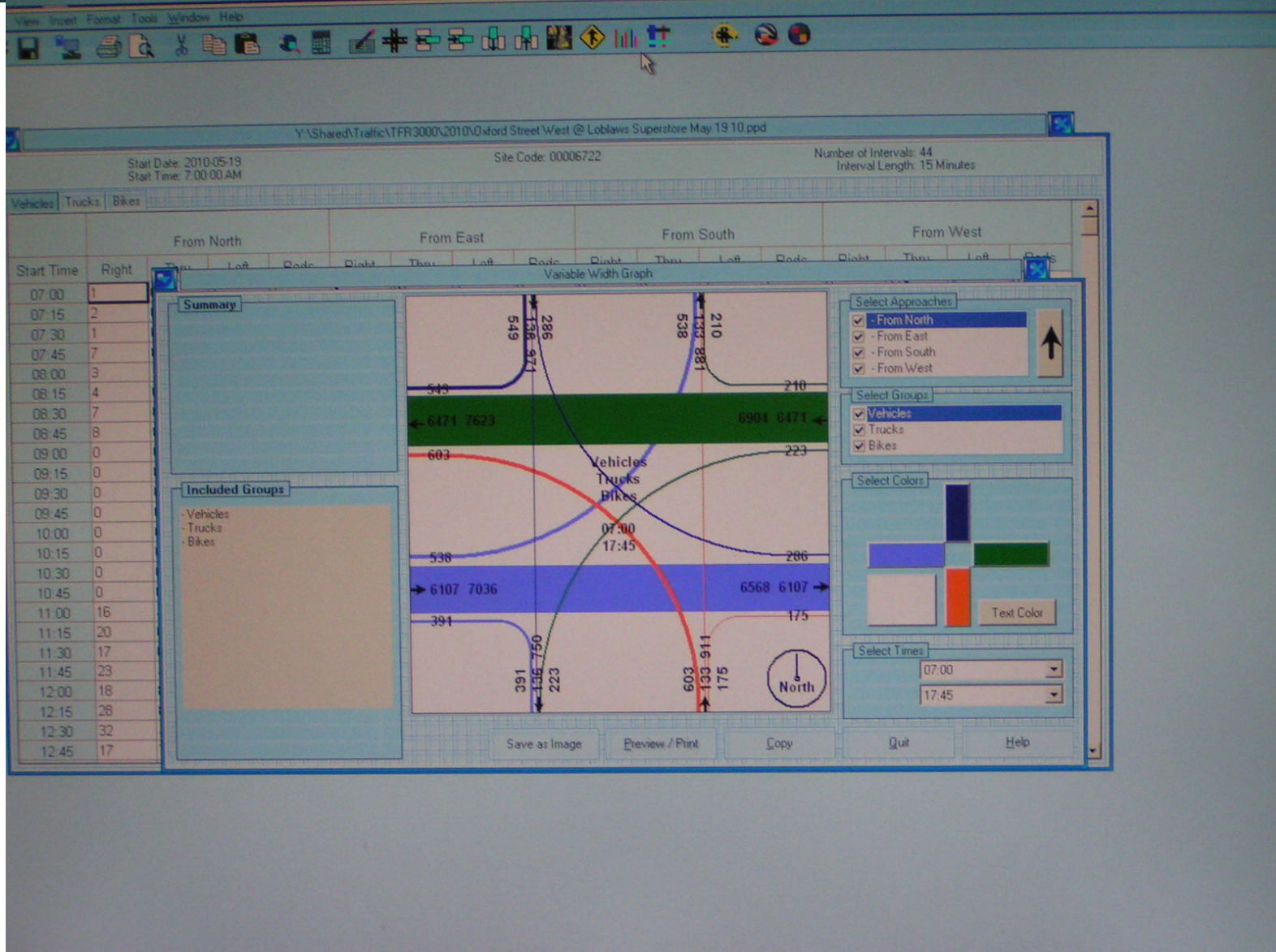
- Road Expansion
- Road Rehabilitation
- Road Structures Rehabilitation
- Roadway Operational & Safety Improvements
- Transportation Planning
- Geomatics
- Construction Administration

\$32M Operating

- Roadway Traffic Signals
- Roadway Illumination
- Parking Operations
- Surface Road Maintenance
- Snow Removal
- Roadside Maintenance
- Forestry











Towards a More Sustainable Transportation System in London

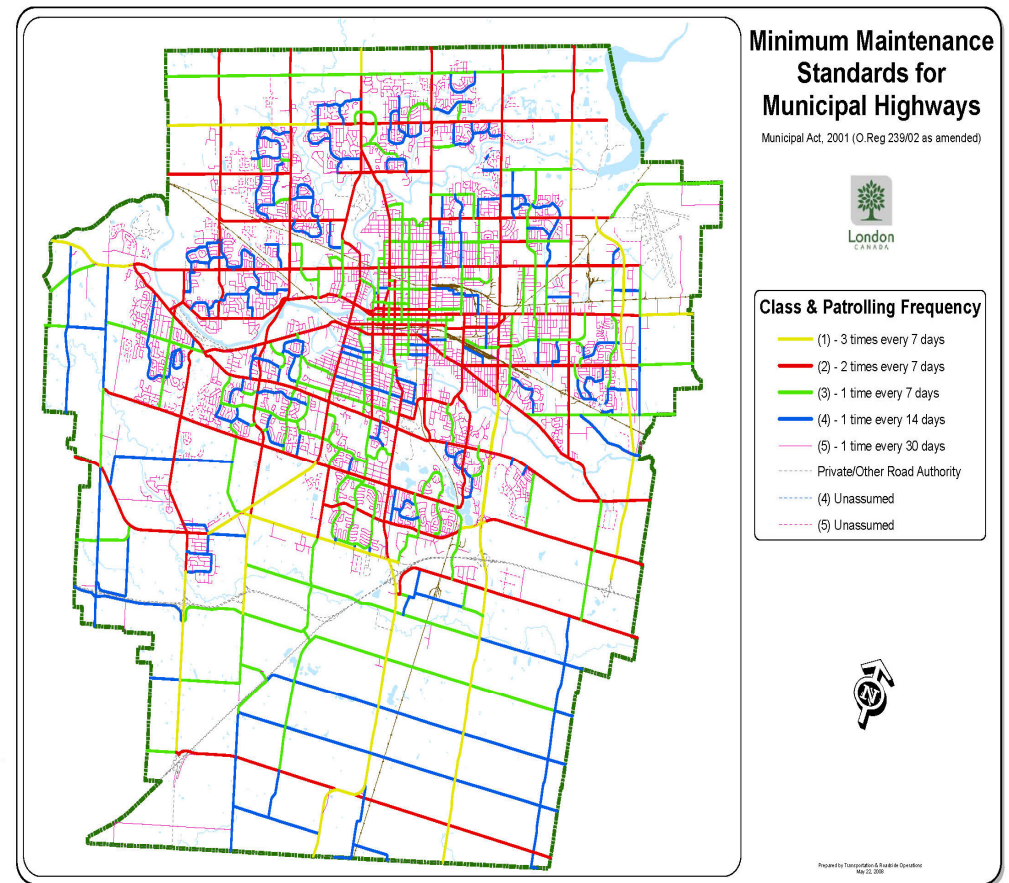
2030 Transportation Master Plan: SmartMoves





Road Maintenance

- Road Patching
- Snow clearing
- Traffic signs and lines
- Sidewalks







Where's My Plow?



What to expect during a storm

Minimum depth of snow before trucks go out		End of snowfall-time needed to clear snow
As snow begins	Salt trucks on all primary & secondary roads	
5 cm	Most primary & secondary roads	6 hours
8 cm	Most sidewalks	24 hours
10 cm	Most residential roads	24 hours
	Bus stops	72 hours after sidewalks completed

As per Provincial and Municipal Standards

www.london.ca

Have Questions or Concerns?

Call A Customer Service Representative 519 661-4570





Construction Administration



Installation of doghouse storm manhole on Belgrave



Custom Taper at existing storm manhole on Edward St.



Storm manhole and sewers on Regent St.



1200mm storm sewer outlet to Thames River under Ridout St. Bridge



Storm sewer installation with insulation for frost protection



Installation of 525mm storm sewer and drop structure on Ridout St.



What you will hear about in 2012.....

- Contract awards:
 - Wonderland Rd N
 - Fanshawe / Highbury
 - Horton St
 - Paving and rehab
 - Equipment rental
 - Street light ops and mtnc
 - Signal ops and mtnc
- TMP
- Road Safety
- Policy reviews:
 - Traffic calming
 - Warranted sidewalks
- Road Sustainability
 - Condition
 - Other funding sources



Other Committees

- 401 interchanges
- Business Plans - Service level reviews:
 - Snow
 - Roadside



ENVIRONMENT, FLEET & SOLID WASTE



Jay Stanford
Director



Mike Bushby
Fleet Services



Lou Pompili
Customer
Services and
Compliance



Wesley Abbott
Solid Waste
Management



Environmental Programs

Our Mission:	Continuous environmental improvement
Our Focus:	The built environment – people, programs & projects

1. Raise awareness about conservation
2. Promote and support actions of individuals, families, organizations and businesses
3. Take actions ourselves. . show leadership



Environmental Programs - Service Areas

1. Air Quality & Climate Change
2. Corporate Energy Management
3. TDM & Active Transportation
4. Urban Watershed Management and Naturalized Properties
5. Brownfield Site Analysis



... plus we support a variety of City departments, agency, boards and commissions



Environmental Programs

A Green and Growing City

A Sustainable Infrastructure

2012 Key Strategic Initiatives:

1. Rethink Energy London (Community & Corporate Sustainable Energy Engagement and Action Plan)



2. Active Transportation – Cycling

3. Community Action Partnerships

4. Result – A Green and Growing City



Public Property - Customer Relations & Compliance

1. Call Centre - Public Property

519-661-4570

es@london.ca

2. Coordinates applications, permits & inspections on public property

3. Animal Services



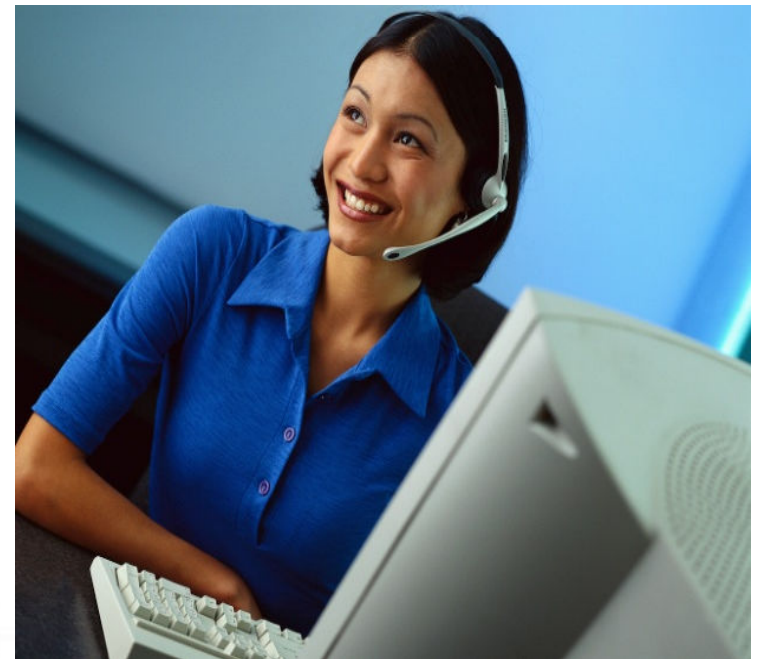


Customer Relations & Compliance

A Sustainable Infrastructure

2012 Key Strategic Initiatives:

- ***At Your Service*** - enhance the customer experience
- Service London – Service Ontario
- Further automation





London
CANADA

Fleet & Operational Services

1. Maintenance and Service

- Automotive/equipment repairs & diagnostics, MTO inspections
- Specialty work including welding fabricating, paint and body work, fuelling



2. Planning, Analysis and Procurement

- Replacements specification, technical analysis, reviews & new acquisitions





London
CANADA

Fleet & Operational Services

3. Dispatch & Operational Services

- Two-way radio communication system
- 24/7 Dispatch
- Planning/scheduling of contract equipment
- Hoist truck

4. Fleet Administration

- Asset management
- System and process development
- Business and trend analysis





Fleet & Operations Services

A Green and Growing City

A Sustainable Infrastructure

2012 Key Strategic Initiatives:

- Addressing Fleet Audit recommendations
- Implementing utilization and rationalization initiatives
- Examining green and cost reduction solutions
- Updating asset management strategies





Solid Waste Services

Service Areas

1. Waste Reduction - Outreach
2. Recycling
3. Composting
4. Garbage (W12A Landfill Site)

Service Providers

- City Staff
- 5 private sector contractors (regional, national & international)

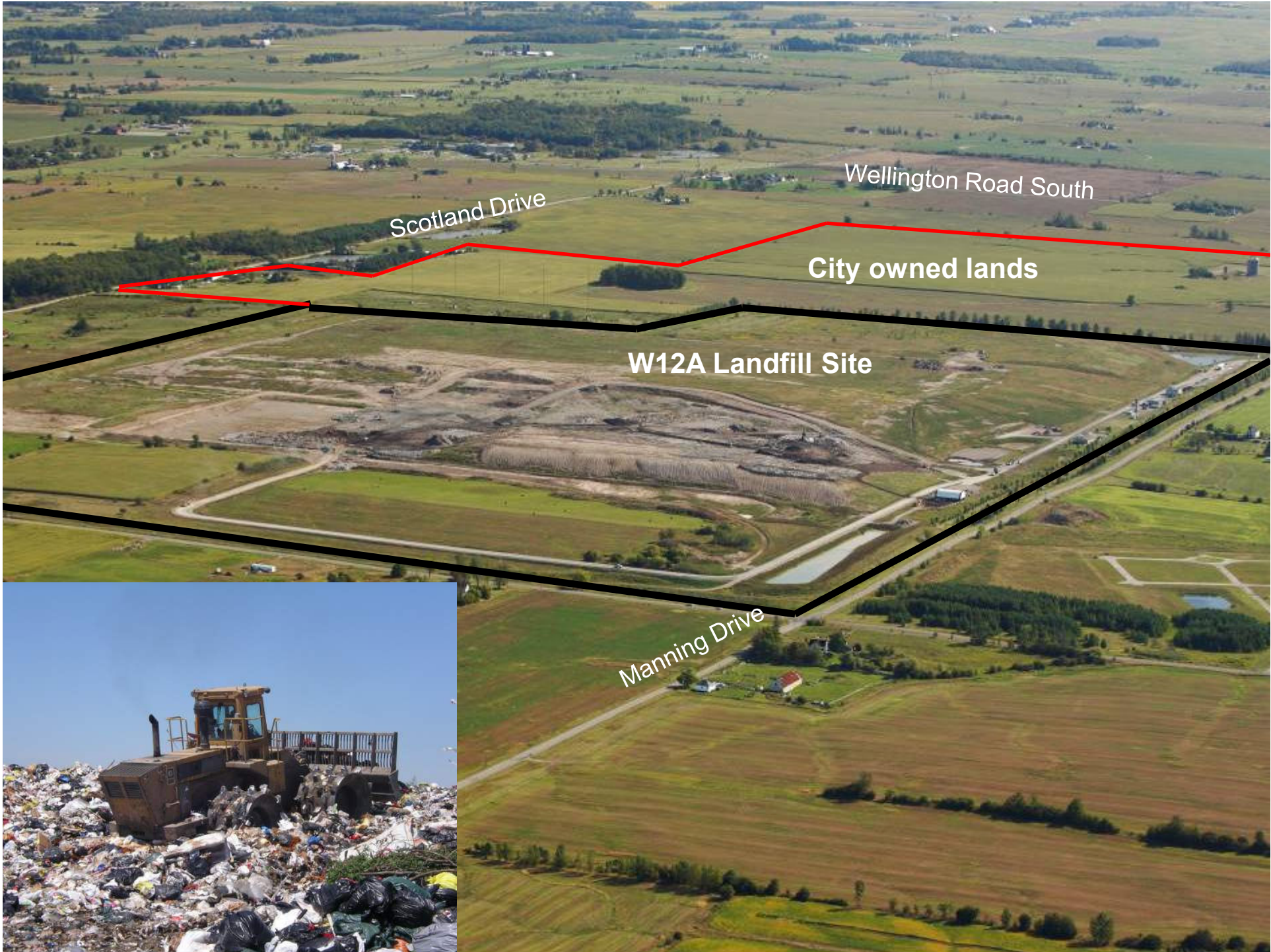




Customer Focused Services

Major Services	Hhlds/Served/Day
Curbside garbage	18,600
Curbside recycling	18,600
Multi-residential garbage	20,000
Multi-residential recycling	9,000

***We are very accessible. . . .
E-mail - Phone - Counter - Curbside***



Scotland Drive

Wellington Road South

City owned lands

W12A Landfill Site

Manning Drive



London Regional Material Recovery Facility (MRF) – built to LEED® Silver Certification





Solid Waste Services

A Green and Growing City

A Sustainable Infrastructure

2012 Key Strategic Initiatives:

1. W12A Landfill & Resource Recovery Site

- Resource recovery opportunities
- Operations (optimization & challenges)
- Environmental Assessment





Solid Waste Services

2. Waste Diversion - Resource Recovery

- Recycling - optimize key areas
- Green Bin Pilot Project
- EnviroDepots - growth

3. Collection Services

- Pickup options
- Operations - optimize key areas





Thanks

John Braam
City Engineer
Planning Engineering and
Environmental Services