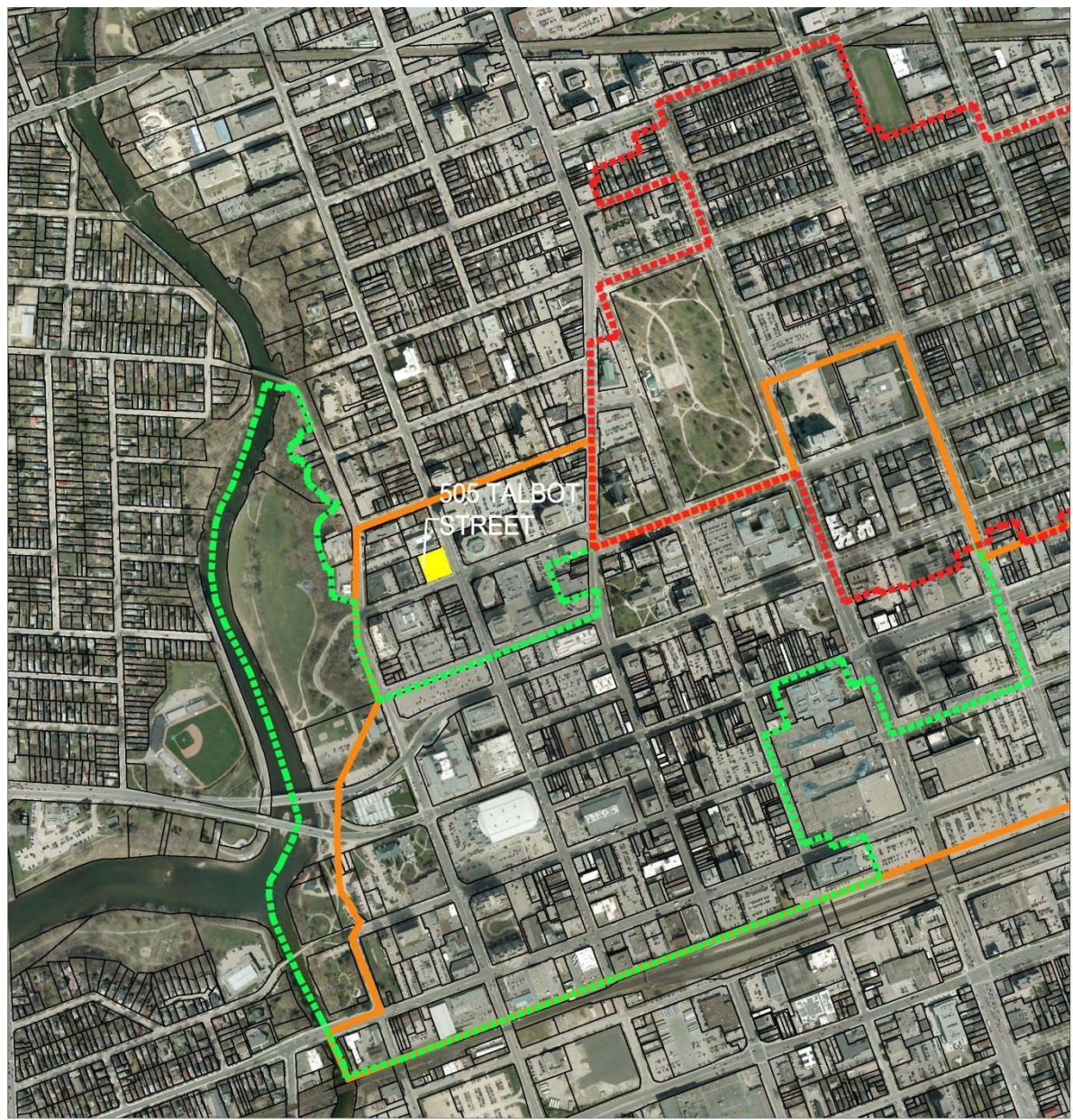


505 Talbot Street



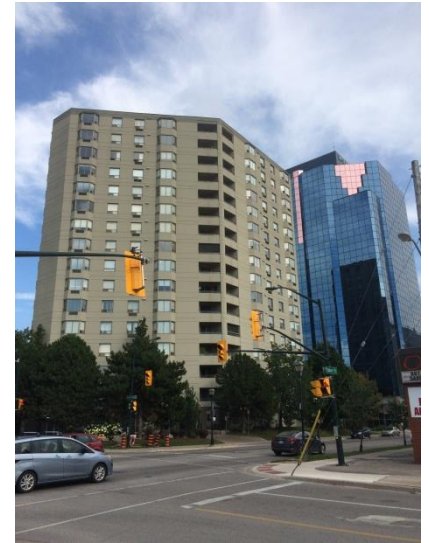
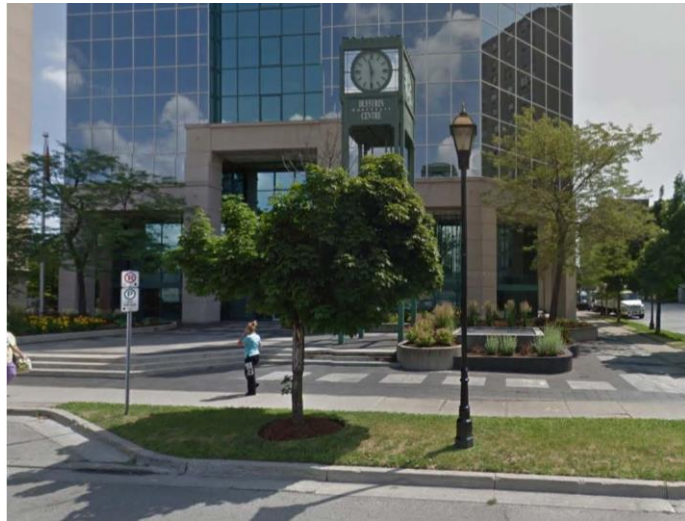


505 TALBOT STREET

LEGEND

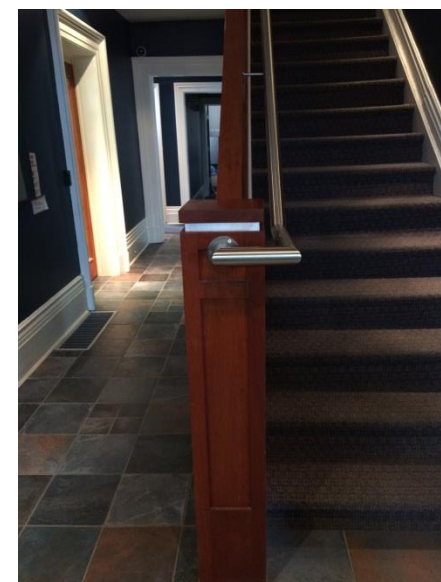
- DOWNTOWN HERITAGE CONSERVATION DISTRICT
- WEST WOODFIELD HERITAGE CONSERVATION
- DOWNTOWN LIMITS





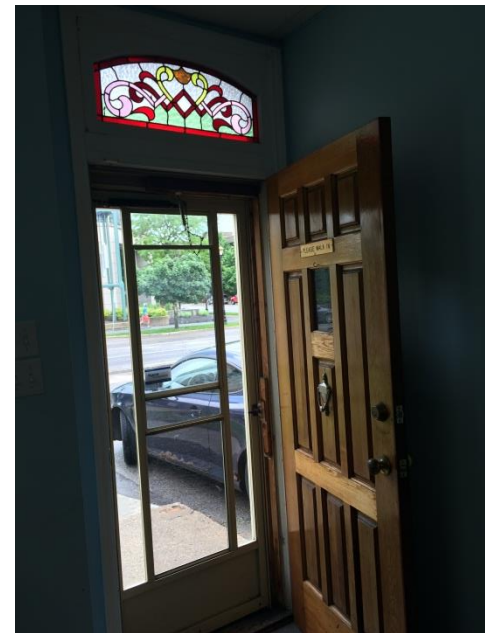
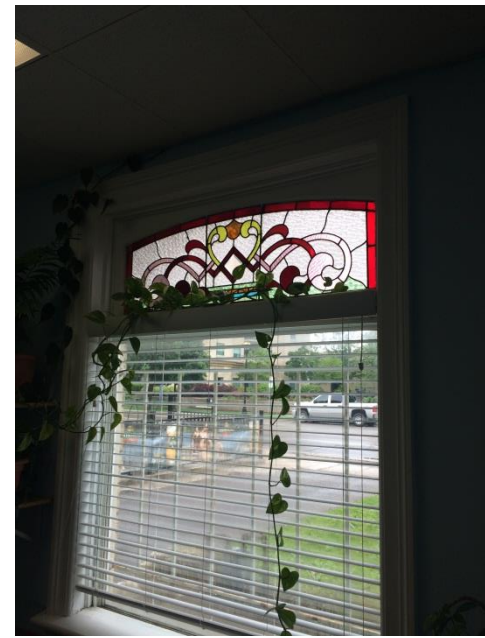
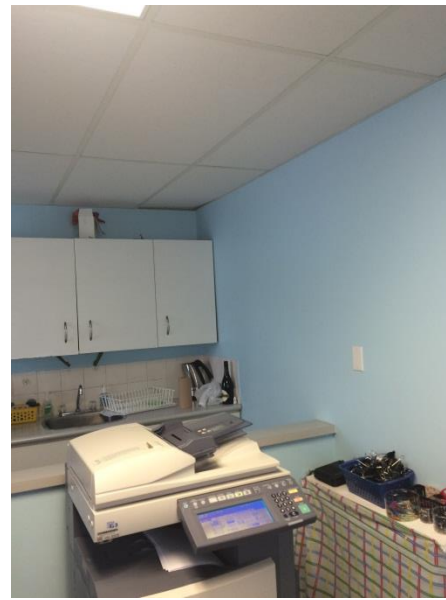


505 Talbot



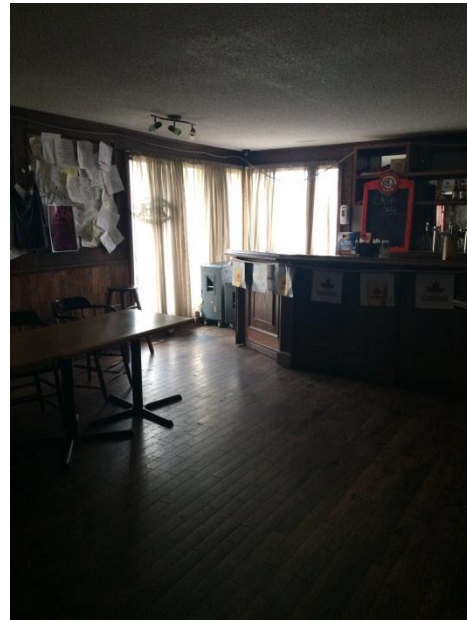
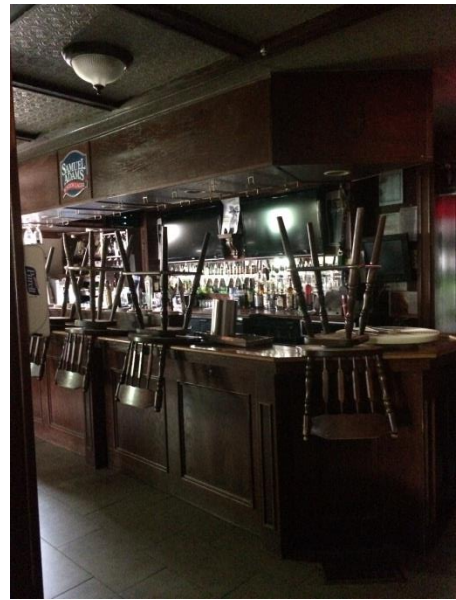
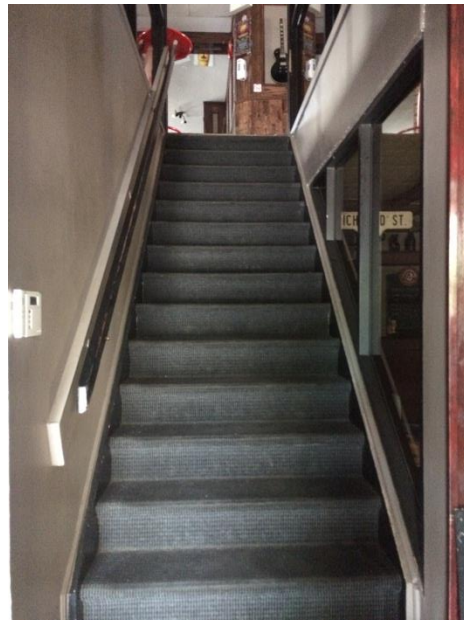


507 Talbot





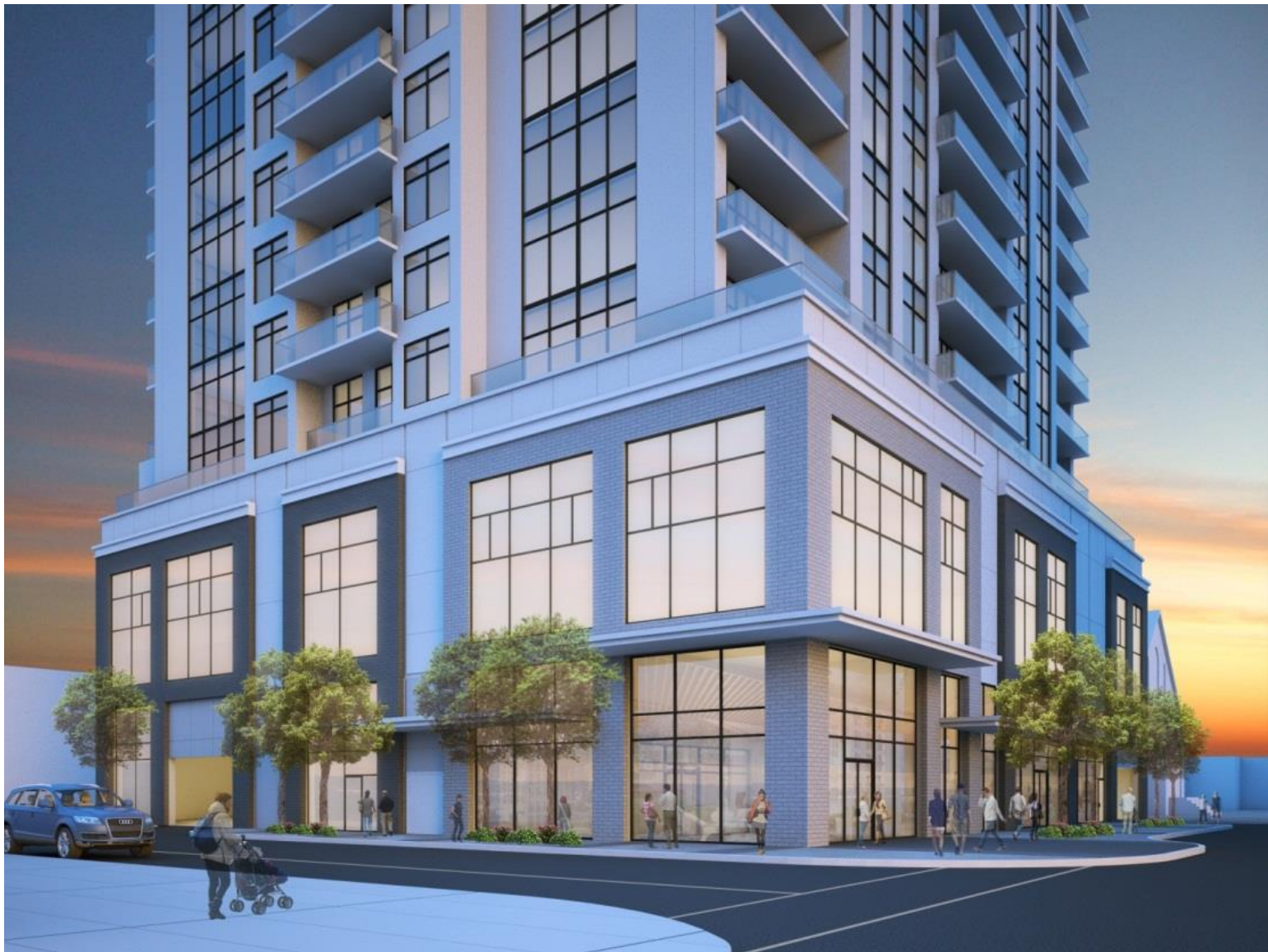
511 Talbot





View at Dufferin Ave. and Talbot St.



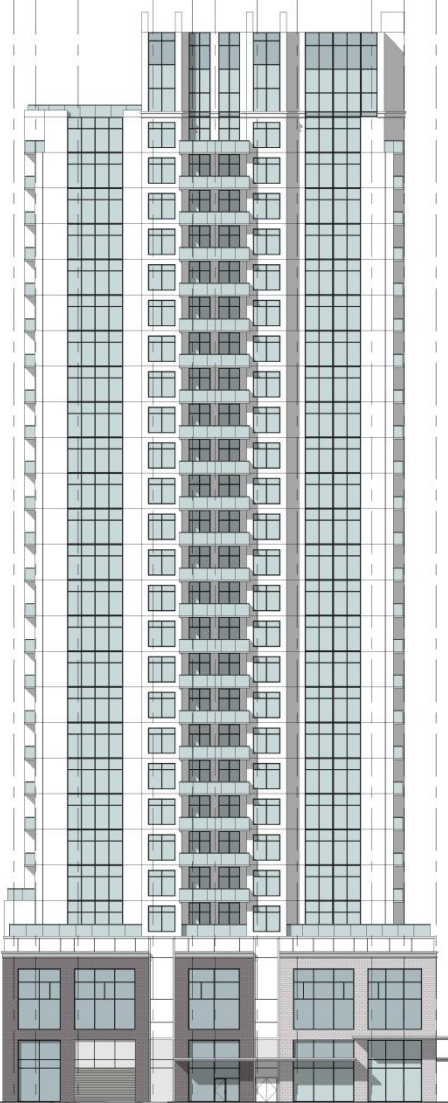


South

East



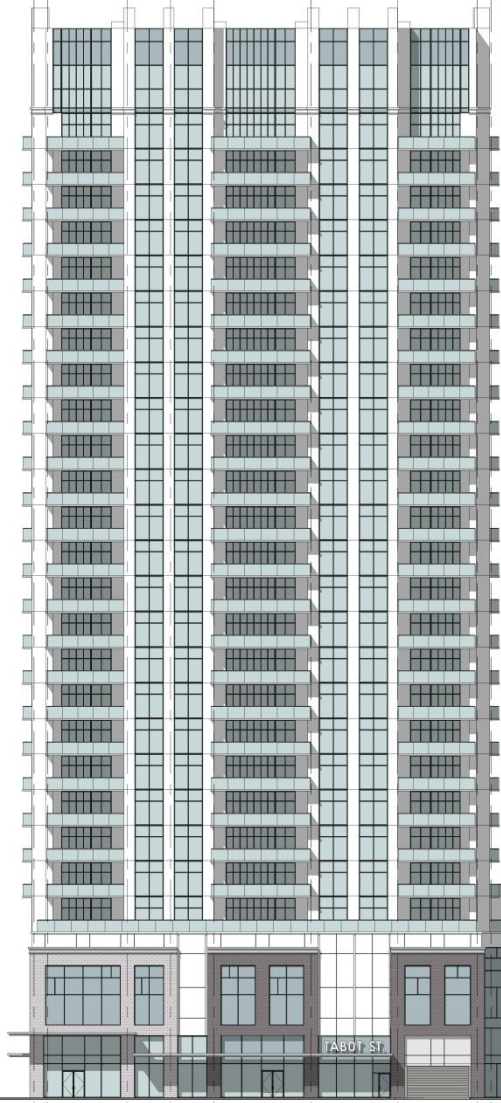
1 2 3 4 5 6 7 8 9 10 11



Top of Penthouse	319'-4"
Roof	290'-4"
Level 28	279'-10"
Level 27	269'-4"
Level 26	258'-10"
Level 25	248'-4"
Level 24	237'-10"
Level 23	227'-4"
Level 22	216'-10"
Level 21	206'-4"
Level 20	195'-10"
Level 19	185'-4"
Level 18	174'-10"
Level 17	164'-4"
Level 16	153'-10"
Level 15	143'-4"
Level 14	132'-10"
Level 13	122'-4"
Level 12	111'-10"
Level 11	101'-4"
Level 10	90'-10"
Level 9	80'-4"
Level 8	69'-10"
Level 7	59'-4"
Level 6	48'-10"
P6	43'-11"
P5	39'-0"
P4	34'-10"
P3	30'-0"
P2	25'-0"
P1	20'-4"
P0	15'-5"
P-1	11'-0"
P-2	5'-0"
Ground Level	0'-0"

South

J I H G F E D C B A



Top of Penthouse	319'-4"
Roof	290'-4"
Level 28	279'-10"
Level 27	269'-4"
Level 26	258'-10"
Level 25	248'-4"
Level 24	237'-10"
Level 23	227'-4"
Level 22	216'-10"
Level 21	206'-4"
Level 20	195'-10"
Level 19	185'-4"
Level 18	174'-10"
Level 17	164'-4"
Level 16	153'-10"
Level 15	143'-4"
Level 14	132'-10"
Level 13	122'-4"
Level 12	111'-10"
Level 11	101'-4"
Level 10	90'-10"
Level 9	80'-4"
Level 8	69'-10"
Level 7	59'-4"
Level 6	48'-10"
P6	43'-11"
P5	39'-0"
P4	34'-10"
P3	30'-0"
P2	25'-0"
P1	20'-4"
P0	15'-5"
P-1	11'-0"
P-2	5'-0"
Ground Level	0'-0"

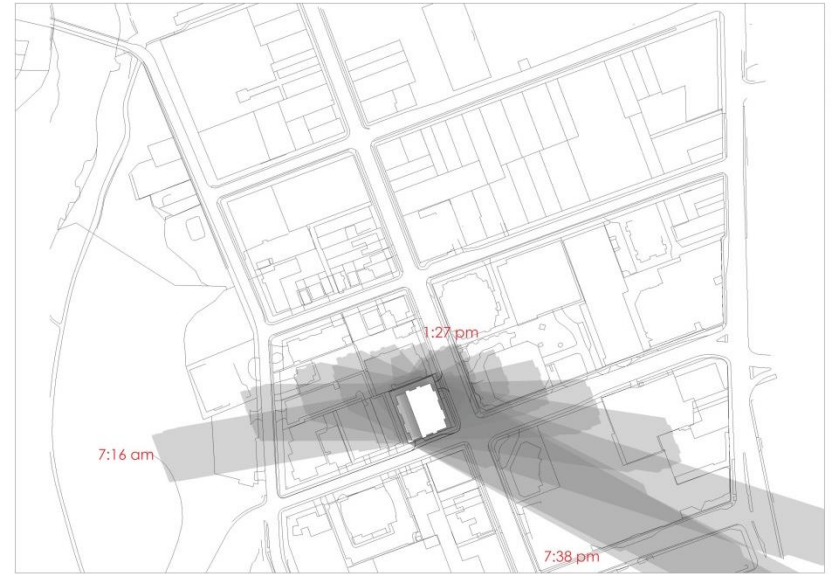
East







Winter



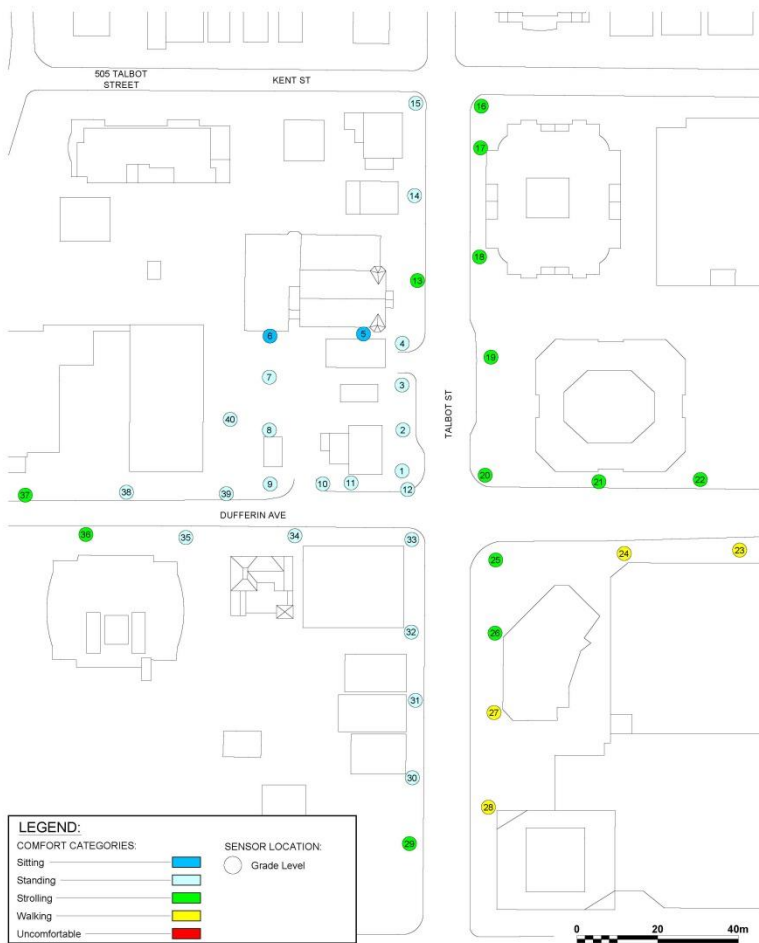
Summer



Fall







Pedestrian Wind Comfort Conditions - Existing
Winter (November to April, 6:00 to 23:00)

505 Talbot Street - London, ON

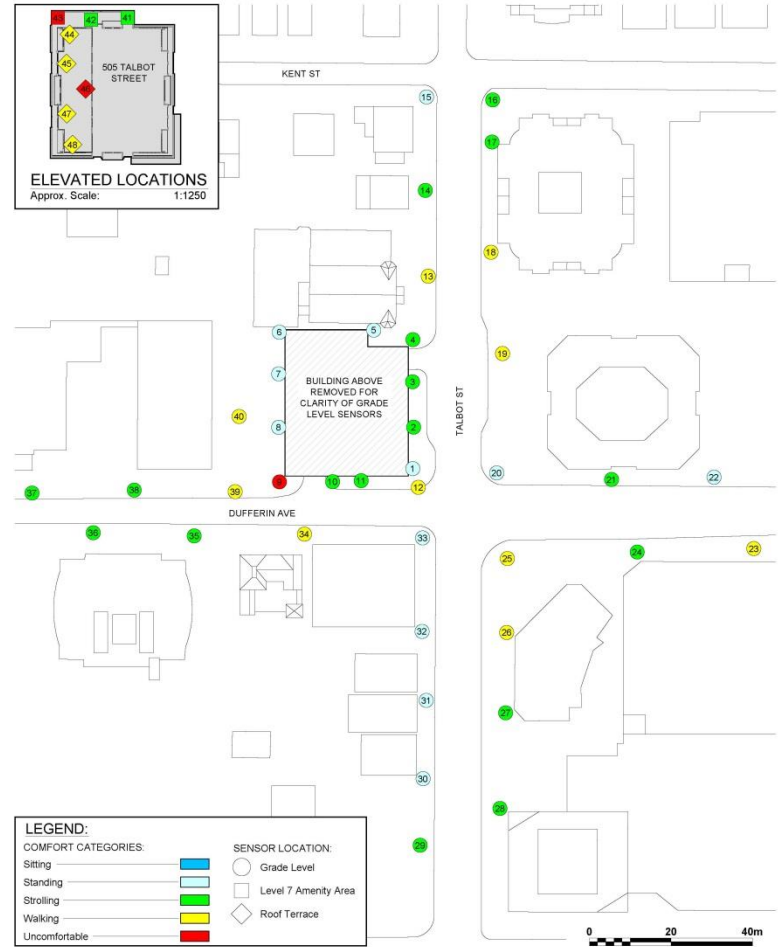


Drawn by: ARM Figure: 4a

Approx. Scale: 1:1250

Date Revised: June 16, 2015

Project #1501781



Pedestrian Wind Comfort Conditions - Proposed
Winter (November to April, 6:00 to 23:00)

505 Talbot Street - London, ON



Drawn by: ARM Figure: 4b

Approx. Scale: 1:1250

Date Revised: June 16, 2015

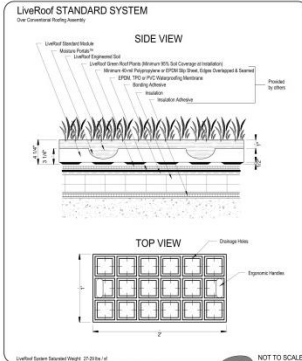
Project #1501781





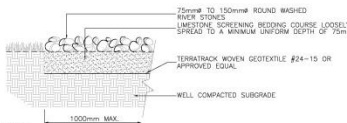
D
6

CONCEPTUAL LIVE ROOF DETAIL
N.T.S.



D
7

GREEN ROOF PLANTED MODULAR TRAYS DETAIL
N.T.S.



D
8

RIVERSTONE DETAIL
N.T.S.

OOOF DECK PLANT LIST:

Key	Qty.	Botanical Name	Common Name	Size & Condition
DECIDUOUS TREES				
Cc	7	CERCIS CANADENSIS 'ACE OF HEARTS'	EASTERN REDBUD	200cm HT., WB, MULTI-STEM
SHRUBS				
Ea	8	EUCONYMUS ALATUS 'RUDY HAAG'	RUDY HAAG BURNING BUSH	50cm HT., 3 GAL. POTTED; PLANT APPROX 1.1m O.C.
Jp	20	JUNIPERUS HORIZONTALIS 'PRINCE OF WALES'	PRINCE OF WALES JUNIPER	50cm HT. POTTED; PLANT APPROX 3.0m O.C.
Sp	3	SPIREEA JAPONICA 'LITTLE PRINCESS'	LITTLE PRINCESS SPIREA	40cm HT., 3 GALLON POTTED; PLANT APPROX 0.8m O.C.
Ts	2	THUNIA OCCIDENTALIS 'SUNKISS'	SUNKISS CEDAR	175cm HT. POTTED; PLANT APPROX 1.0m O.C.
Tx	5	TAXUS X MEDIA 'WARDII'	WARDII YEW	60cm HT., 3 GAL. POT. PLANT APPROX. 1m O/C
PERENNIALS, ORNAMENTAL GRASSES AND GROUNDCOVERS				
Cc	21	CALAMAGROSTIS X ACUTIFLORA 'OVERDAM'	OVERDAM FEATHER REED GRASS	2 GAL. POTTED; PLANT APPROX 0.6m O.C.
Ca	31	CALAMAGROSTIS X ACUTIFLORA 'KARL FOERSTER'	KARL FOERSTER FEATHER REED GRASS	3 GAL. POTTED; PLANT APPROX 0.6m O.C.
He	15	HEMEROCALLIS 'ELEGANT CANDY'	ELEGANT CANDY DAVULY	2 GAL. POTTED; PLANT APPROX 0.6m O.C.
Hi	20	HELICTOTRICHON SEMPERVIRENS 'SAPPHIRE'	SAPPHIRE BLUE OAT GRASS	3 GAL. POTTED; PLANT APPROX 0.6m O.C.
Lm	99	LAVANDELA ANGSTROFFIA 'MUNSTEAD'	MUNSTEAD LAVENDER	1 GAL. POTTED; PLANT APPROX 0.25m O.C.
Sp	14	SEDUM PURPLE EMPEROR	PURPLE EMPEROR SEDUM	1 GAL. POTTED; PLANT APPROX 0.6m O.C.

