

165 Elmwood Avenue East  
OZ-8464

*Planning & Environment Committee*  
*May 19, 2015*



London  
CANADA

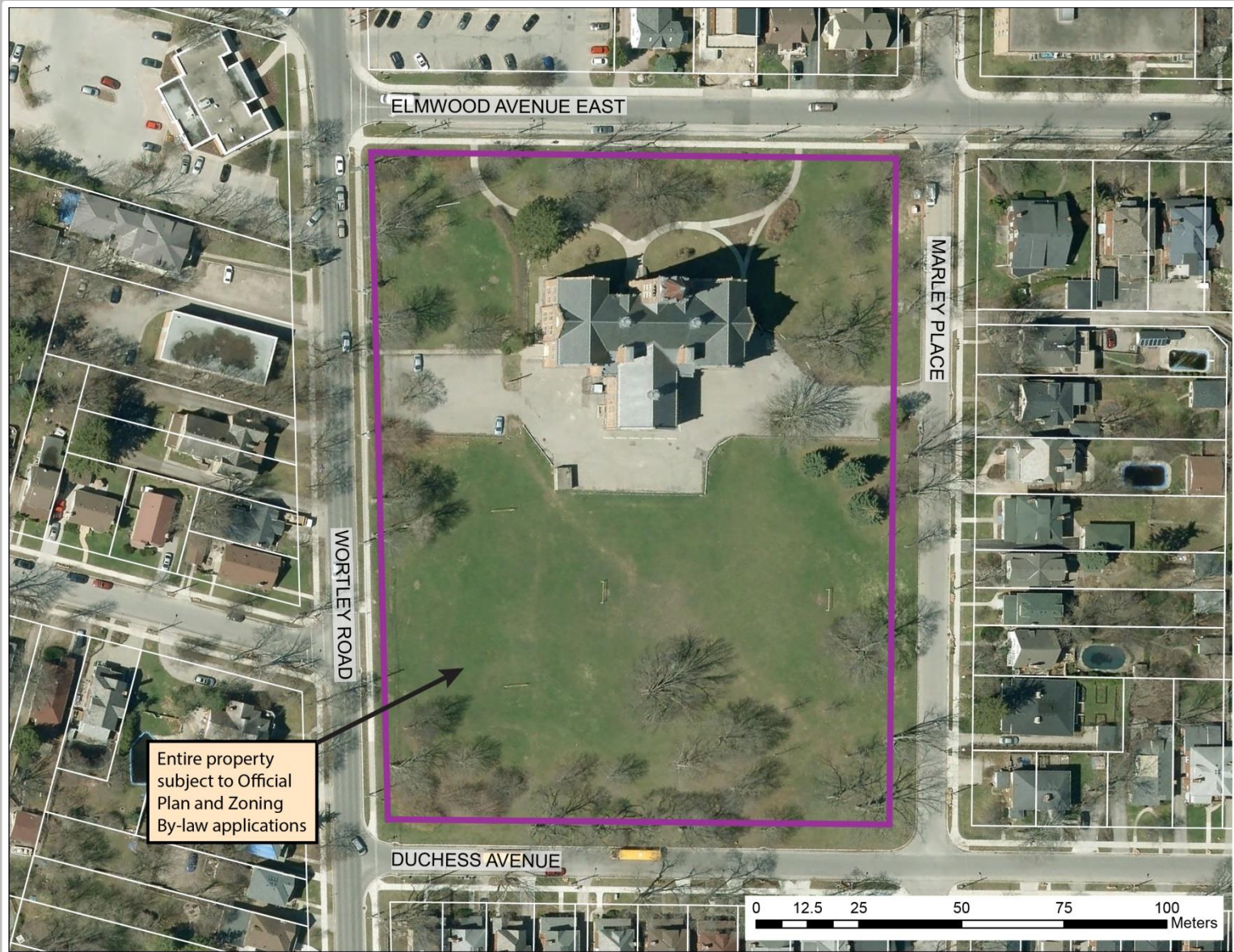
# Request Under Consideration

- Adaptive re-use of former Normal School by YMCA
- Allow offices, community centre, day care
- Amend Heritage Zone to permit addition and small accessory buildings
- Recognize existing parking
- Related Site Plan Public Mtg.



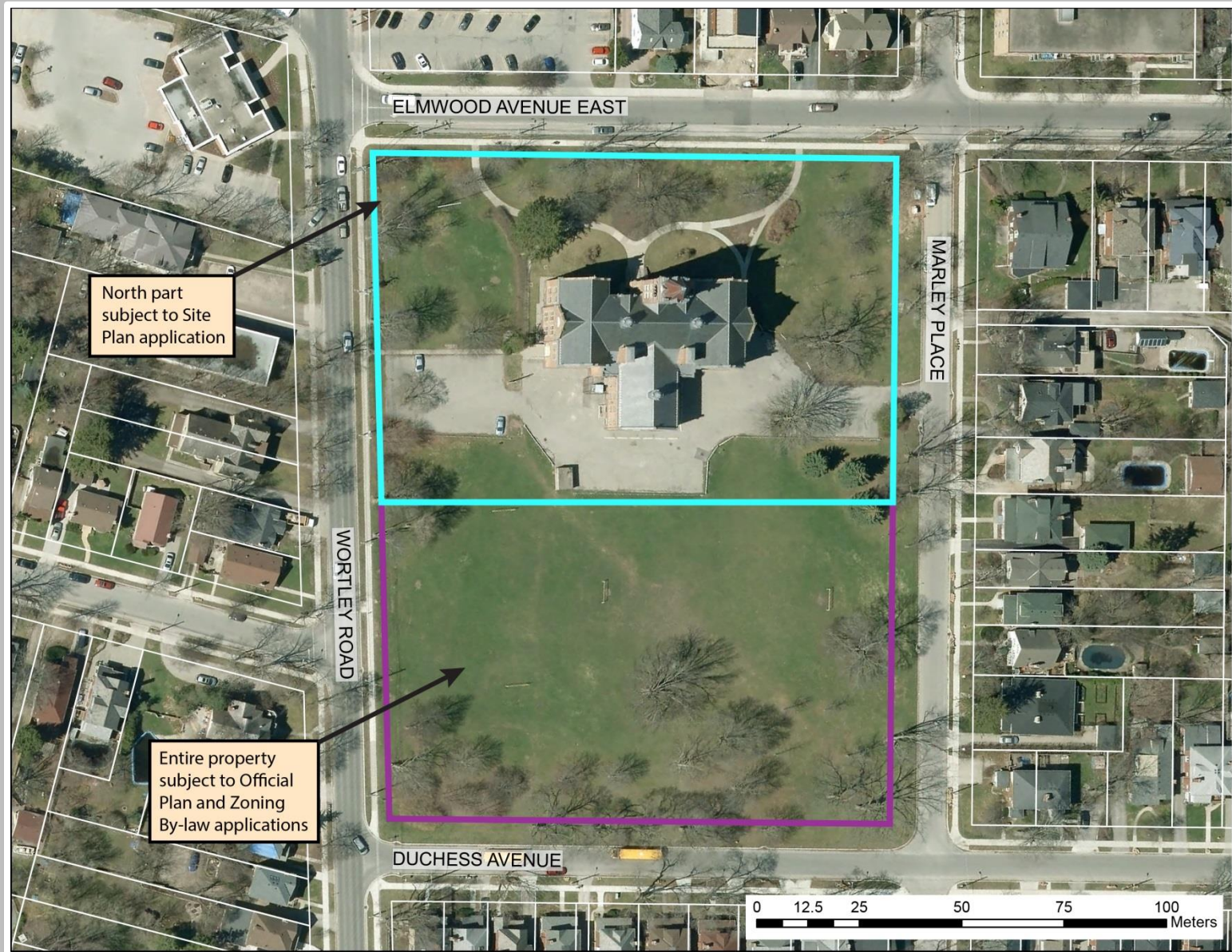


# Location – Official Plan and Zoning By-law





# Location – Site Plan Application



# Nature of Application and Recommendation

	FROM	TO	Site Specific Policies/Regulations
<b>Official Plan</b>	Office Area	Office Area	Permit a Community Facility
<b>Zoning By-law</b>	Heritage/Office Zone	Heritage Special Provision/Office Special Provision Zone	<p>Allow 36 parking spaces</p> <p>Set new minimum landscaped open space, maximum lot coverage</p> <p>Permit accessory structures in exterior side yards</p>
<b>Permitted Uses</b>	Professional Offices	Offices, community facility, day care	