



Processing Vegetables in the London Glanworth Area
Presentation to City of London and MTO



A WORLD LEADER IN PROCESSED VEGETABLES



Our Brands



Our Customer's Brand



In Every Distribution Channels

Retail



Foodservice



Industrial



Bonduelle Americas

- 11 Production Plants
 - 3 Ontario
 - 4 Quebec
 - 3 USA
 - 1 Alberta (New)
- 850 growers
- 118,000 acres



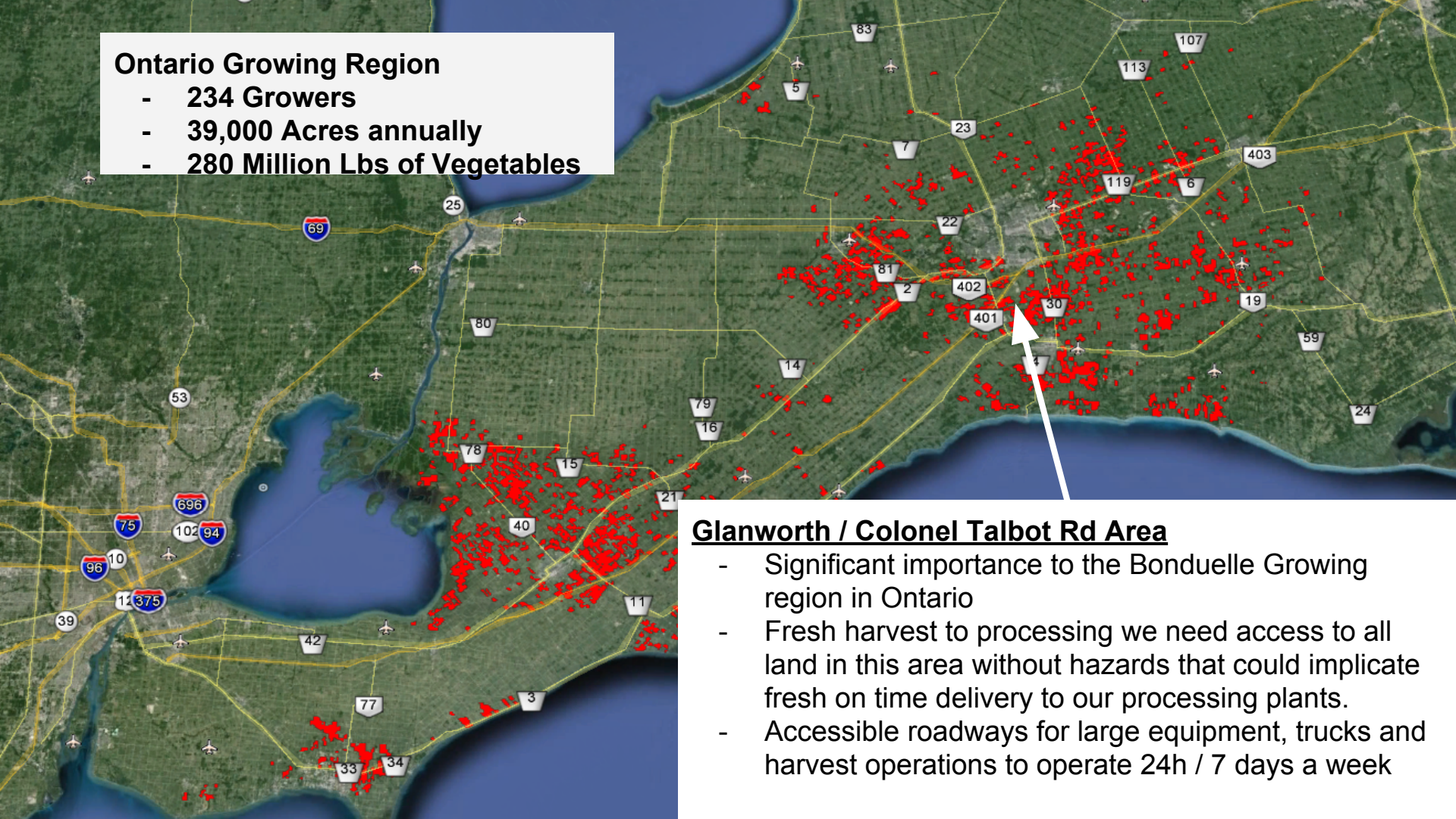
Overview of Crops and Capacity

Quebec	Ontario	USA
<ul style="list-style-type: none"> • Peas • Sweet Corn • Pumpkin • Snap Beans • Extra Fine • Green Beans • Beets • Carrots • Broccoli • Cauliflower 	<ul style="list-style-type: none"> • Peas • Sweet Corn • Snap Beans • Lima Beans • Carrots • Celery • Brussel Sprouts • Squash • Turnip 	<ul style="list-style-type: none"> • Peas • Sweet Corn • Snap Beans • Lima Beans • Carrots • Celery • Spinach • Squash • Potatoes
<p>225M Lbs. Canned & Frozen</p>	<p>280M Lbs. Frozen and Canned</p>	<p>295M Lbs. Frozen</p>

17 Crops & 800M Lbs Production

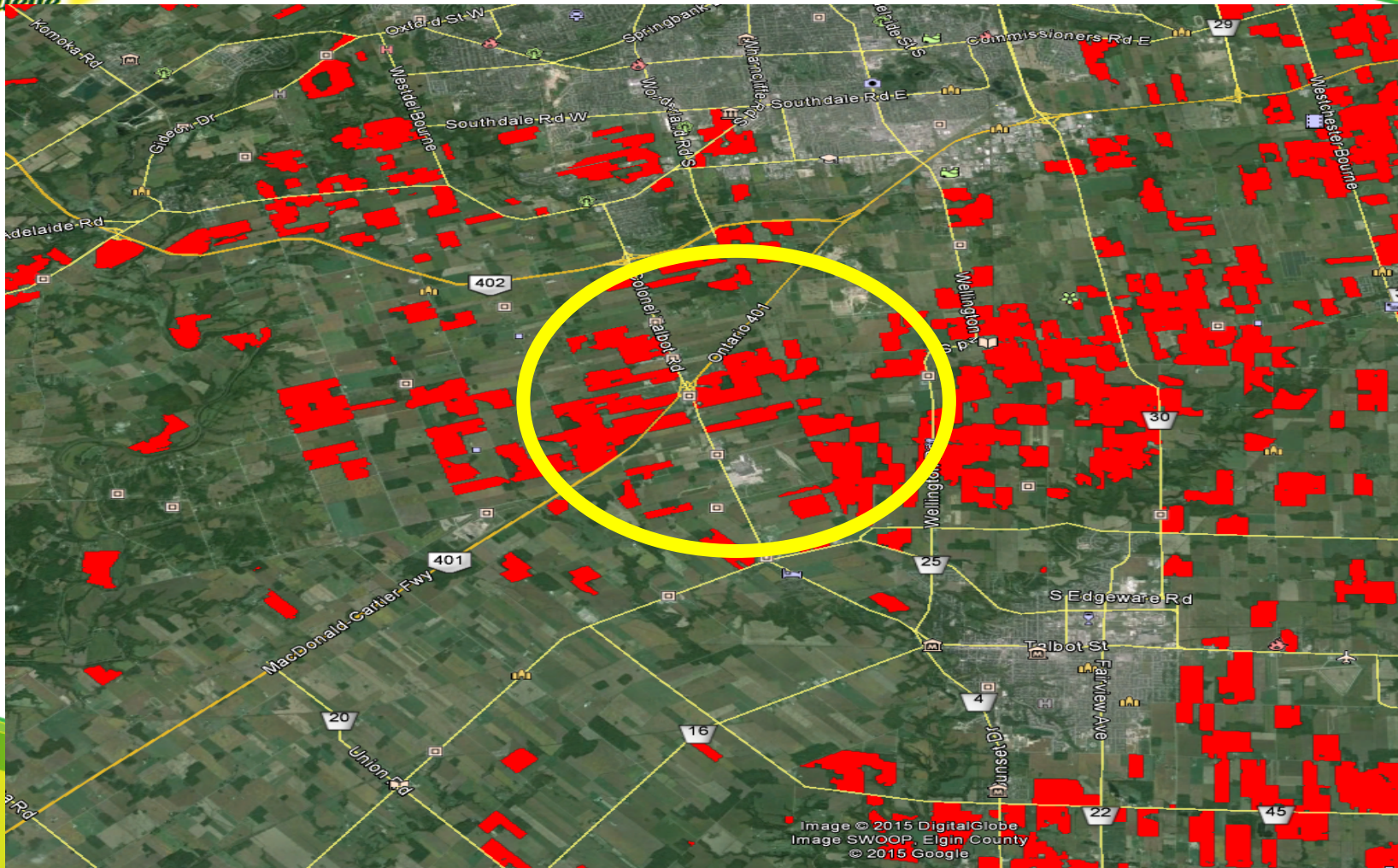
Ontario Growing Region

- 234 Growers
- 39,000 Acres annually
- 280 Million Lbs of Vegetables



Glanworth / Colonel Talbot Rd Area

- Significant importance to the Bonduelle Growing region in Ontario
- Fresh harvest to processing we need access to all land in this area without hazards that could implicate fresh on time delivery to our processing plants.
- Accessible roadways for large equipment, trucks and harvest operations to operate 24h / 7 days a week





The Harvest Process for Peas

- 6 Harvesters
- 2 Tractors & Dump Carts
- 3 Transport Trucks

We harvest 50 ac in 5 hours and move to the next field. In one day we harvest 140 acres making approx 3 different moves per day on the road with all equipment moving at the same time.



Reasoning for Redesign of the Hwy 401 interchange at Col. Talbot Rd., in London.

- Safe access for our equipment and operators moving in and out of fields in the areas around Glanworth Drive and Colonel Talbot Road.
- Mitigate risk of being held up a load of fresh product because of a traffic flow impediment
- Traffic Lights will allow for our slow moving equipment to cross the major roadways safely
- All of this being in place will ensure that we can continue to produce locally grown food in this growing region for Bonduelle Vegetables.
- **We support LCA and local farmers in Alternative 6 design**



Reasoning for Redesign of the Hwy 401 interchange at Col. Talbot Rd., in London.

We want to prevent and reduce risk for our operators being in a road travel circumstance like this. Motor Vehicle traffic has proven to not know how to safely flow with large farm equipment. The roads that we are talking about today are surrounded by farmland that need sufficient access and means to travel safely to and from the fields.



Bonduelle



Arctic Gardens®

The vegetables we love.

