

Agenda Item #	Page #

Appendix “E”

STORMWATER SERVICING AND TRIBUTARY WORKS FOR THE NORTH LAMBETH P9 STORMWATER MANAGEMENT (SWM) FACILITY

Executive Summary

The objective of this report is to present the completed Municipal Class Environmental Assessment (Class EA) Study for the Stormwater Servicing and Tributary Works for the North Lambeth P9 Stormwater Management (SWM) Facility for Council acceptance. The land subject to this study consists of approximately 127 ha of undeveloped agricultural land, and small areas of existing low density residential developments within the Dingman Creek Sub-watershed and Southwest Planning Area.

The City of London has completed the Class EA to develop a preferred servicing strategy and conceptual design for the implementation of storm/drainage and SWM for a portion of the Tributary C North Lambeth Catchment area tributary to Dingman Creek. The work has been undertaken in accordance with the requirements for Class EA Schedule ‘B’ projects as described in the Municipal Engineers Association’s “Municipal Class Environmental Assessment (EA)” document (October 2000 as amended in 2007 & 2011).

Background

The Dingman Creek Subwatershed Study Update (DCSSU) was completed by Delcan to identify natural resources within the subwatershed and recommend strategies to protect and enhance those resources as land uses change. In 2013 the Southwest Area Plan (SWAP) was adopted by City Council as a guideline document for future land use in the southwest portion of the City of London. As part of the SWAP a SWM component study was completed (AECOM 2010) which recommended a combination of SWM measures be implemented prior to development, to provide protection and/or enhancement to the receiving water resources system, taking into consideration the requirements of the DCSSU. The component study recommended SWM facilities and other SWM measures including at source water quality controls be implemented for the Tributary C North Lambeth Catchment area.

Prior to the completion of the SWAP, development pressures were occurring within the study area. In 2012 an application was submitted to the Planning Department for a Draft Plan of Subdivision and concurrent Official Plan Amendment and Zoning Bylaw Amendment to develop a portion of the study area for residential uses. As part of the submission for approval a Conceptual SWM Report (Stantec, 2012) was submitted in support of the development proposal. This report identified a conceptual SWM strategy to manage the runoff from the proposed subdivision, which encompasses a significant portion of the study area. In October 2013 the proposed development was approved by the Ontario Municipal Board (OMB Decision PL130130) with a portion of the developable area withheld for further evaluation, encompassing the proposed SWM block. To proceed with development in the study area, the City of London has completed a storm drainage and SWM Class EA to satisfy current commitments and anticipated growth, confirm storm drainage and stormwater management infrastructure will be favourably situated within the study area, and minimize the potential adverse environmental impacts, prior to proceeding with development.



Agenda Item #	Page #

STORMWATER SERVICING AND TRIBUTARY WORKS FOR THE NORTH LAMBETH P9 STORMWATER MANAGEMENT (SWM) FACILITY

In order to achieve the aforementioned, the following objectives have been identified:

- confirmation of all drainage/catchment and sub-catchment areas;
- identification of a storm/drainage conveyance system for the proposed Dingman Creek SWM no. P9 drainage area, including the outlet system and any necessary downstream channel modification works;
- evaluation of the benefits of private permanent systems as part of the preferred stormwater servicing strategy;
- development of a conceptual design for the preferred solution and preparation of corresponding cost estimates;
- preservation of downstream channel baseflow;
- mitigation of potential downstream channel erosion due to runoff from future growth;
- prevention of future flood risk potential;
- protection of surface water quality;
- maintaining an appropriate diversity of aquatic and terrestrial life; and
- providing opportunities for human uses.

Public Consultation

As part of the Class EA process, an extensive agency/public consultation program has been undertaken seeking input from directly affected landowners and residents, the general public, review agencies and Aboriginal Communities. Project meetings were held with City Staff, Ministry of the Environment and Climate Change (MOECC), Upper Thames River Conservation Authority (UTRCA), Auburn Properties Ltd. and York Developments Ltd. Public Meetings were held on Wednesday November 12, 2014, for all stakeholders to review the work completed and provide their comments on the project. Public and agency input has been received and incorporated into the planning and proposed design of the works where feasible for this project.

Once the recommendations have been accepted by Council and in accordance with Municipal Class EA requirements, a Notice of Completion will be circulated to those who previously expressed an interest in the project. This notice outlines the completion of the project including the recommended servicing strategy, the thirty (30) day review period and the public’s right to request the Minister of the Environment to issue an order to comply with Part II of the EA Act.

Conclusions and Recommendations

The City of London has developed and evaluated all viable alternatives to address adequate storm drainage and SWM for the study area. The Class EA identifies Option B (refer to Figures EX-1 and EX-2) as the preferred servicing strategy which provides:

- storm conveyance and SWM measures for an approximate 127 hectare area triggered by development.
- a Regional SWM Facility designed as a wet pond to provide water quality, quantity, and erosion control for 115 hectares.
- runoff from the remaining service area will be treated by on-site SWM controls that will discharge to external drainage works located in the Colonel Talbot Road right-of-way.



Agenda Item #	Page #

STORMWATER SERVICING AND TRIBUTARY WORKS FOR THE NORTH LAMBETH P9 STORMWATER MANAGEMENT (SWM) FACILITY

- The SWM measures will provide MOECC Normal Protection Level water quality control, as described in the MOECC design guidelines.
- outlet improvements will be required to convey stormwater from the proposed SWM facility to the existing downstream channel. Pipe or open channel could be used for this purpose; an open channel provides potential benefits including natural heritage mitigation, passive recreation, and habitat creation.

Option B recommends storm/drainage and SWM servicing that:

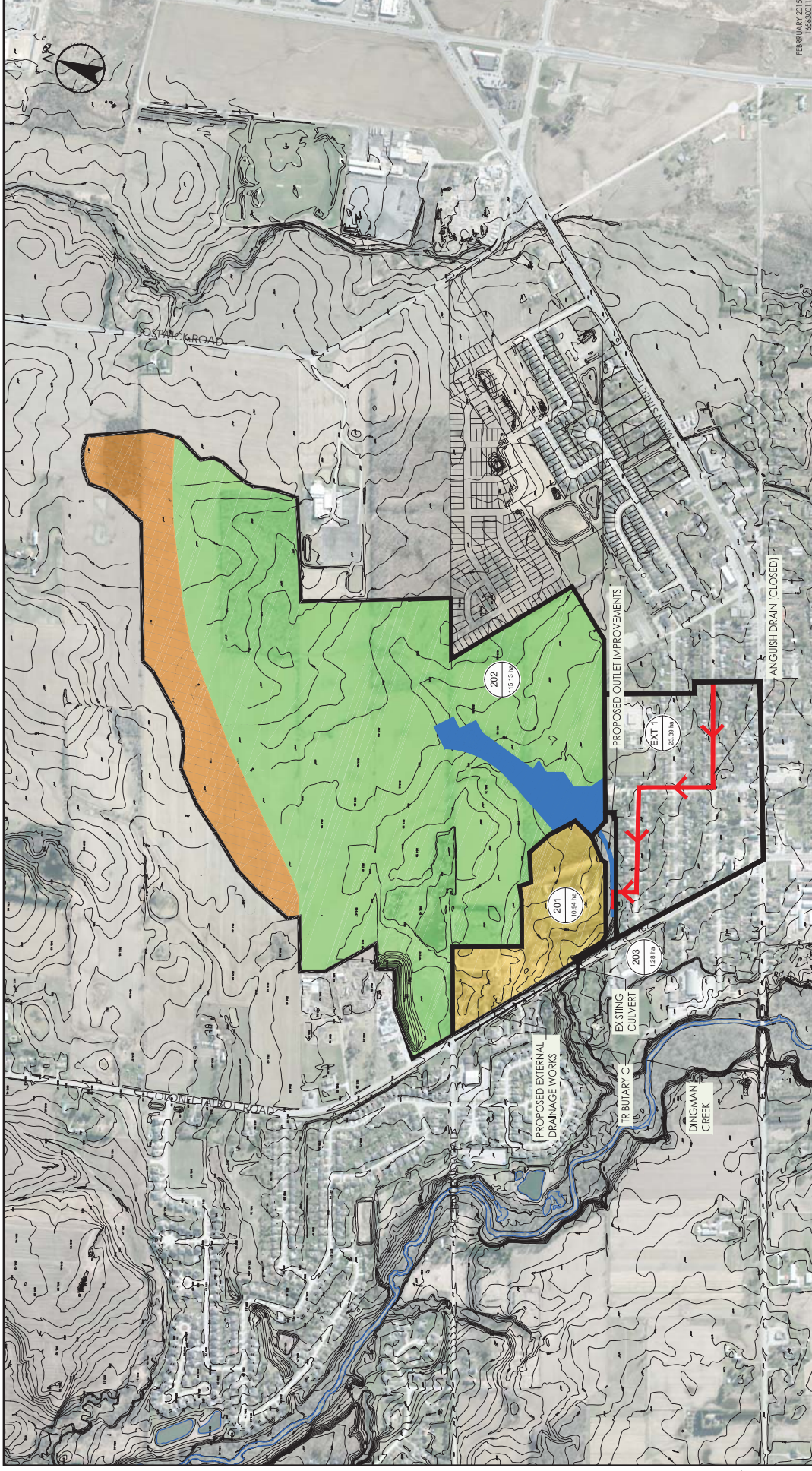
- comply with the Dingman Creek Subwatershed SWM criteria/benefits and environmental targets;
- optimize the water resource management approach to maintain and integrate the ecological conditions within the Dingman Creek;
- are consistent with the City and MOECC’s design standards and requirements as well as the requirements of the UTRCA.

The implementation of the recommended works under Option B will be subject to written approval and UTRCA permits for the proposed remediation and servicing works in accordance with Section 28 of the Conservation Authorities Act and MOECC Environmental Compliance Approval.

The total estimated cost of the recommended solution is in the amount of approximately \$5.25M, including engineering and contingency costs (excluding HST).

Agenda Item #

Page #



Client/Project
 City of London
 STORM SERVICING & TRIBUTARY WORKS FOR THE NORTH LAMBETH
 NO. P8 SWM FACILITY
 Figure No. EX-1
 Title
 FEBRUARY 2015
 16593001

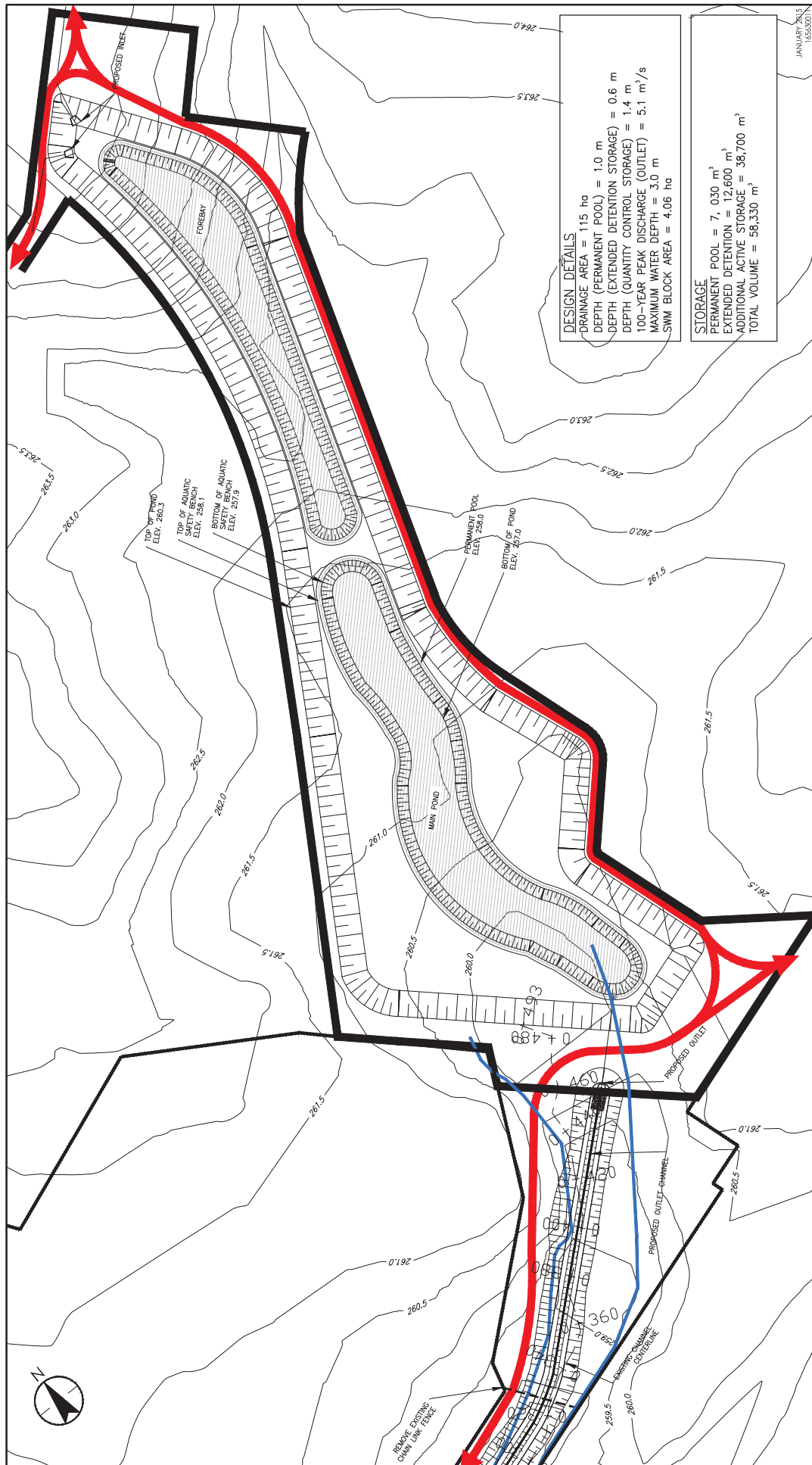
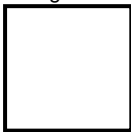
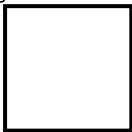
Stantec
 600-171 Queens Avenue
 London ON N6A 5J7
 Tel. 519-645-2007
 www.stantec.com

Legend

- PROPOSED SWM POND
- DRAINAGE TO ON-SITE SWM CONTROLS
- DRAINAGE TO SWM POND
- AREA POTENTIALLY SERVICED BY NORTH LAMBETH P8
- PROPOSED DRAINAGE BOUNDARY
- 100
0.25
0.50 CATCHMENT ID
- 100
0.25
0.50 AREA (ha)

0 100 300 500
 1:10,000

V:\016557\active\16593001\1 Dingman Creek SWM P8 Class EA\design\drawing\Drainage Figure_PREFERREDOption8.dwg
 2015-08-30 05:05 PM By: Turner, Rich



Client/Project

City of London
 STORM SERVICING AND TRIBUTARY WORKS
 FOR THE NORTH TALBOT NO. P-9 SWM FACILITY

Figure No. EX-2

Title PRELIMINARY SWM P-9 LAYOUT



- Legend**
- BLOCK LIMIT
 - CALCULATED EXISTING CONDITION TRIBUTARY 'B' 250-YEAR FLOOD LIMIT
 - CONCEPTUAL PATHWAY ALIGNMENT



600-171 Queens Avenue
 London ON N6A 5J7
 Tel. 519-645-2007
 www.stantec.com

Agenda Item #	Page #

Notice of Completion – Municipal Class Environmental Assessment (EA) Study for the Stormwater Servicing and Tributary Works for the North Lambeth No. P-9 SWM Facility

The City has completed a Municipal Class Environmental Assessment (EA) Study to evaluate and identify the stormwater servicing options for the North Lambeth No. P-9 Stormwater Management Facility (SWMF), including improvement works to the Dingman Creek tributary system. The study has been undertaken in accordance with the requirements of a Schedule B project as outlined in the Municipal Class Environmental Assessment document (2000), as amended in 2007 & 2011.

As part of the Class EA process, an extensive agency/public consultation program was completed seeking input from directly affected residents, Aboriginal Communities, the general public and review agencies. A Public Information Centre was held on November 12, 2014 for stakeholders to provide their input into the project.

The recommended alternative involves storm conveyance and SWM measures for an approximate 119 hectare area triggered by development; including a Regional SWMF designed as a wet pond to provide water quality, quantity, and erosion control for 115 hectares; runoff from the remaining service area will be treated by on-site SWM controls that will discharge to external drainage works located in the Colonel Talbot Road right-of-way. Outlet improvements will be required to convey stormwater from the proposed SWMF to the existing downstream channel.

By this notice, the Draft Screening Report for this work will be placed on public record on Wednesday May 13th, 2015, to be reviewed by the public and/or any other interested party at the following locations:

City of London Clerk’s Office, 3rd Floor and Environmental Services, 8th Floor 300 Dufferin Avenue, London, Ontario, 519-661-2500 Hours: Monday – Friday: 8:30 a.m. to 4:30 p.m.	London Public Library – Lambeth Branch 7112 Beattie Street, London, ON Phone:(519) 652-2951 Hours: Tuesday & Thursday: 1:00 p.m. to 5:00 p.m and 6:00 p.m. to 9:00 p.m Wednesday, Friday & Saturday: 9:00 a.m. to 12:00 p.m and 1:00 p.m. to 5:00 p.m Sunday – Monday: Closed
Stantec Consulting Ltd. 600-171 Queens Ave. London, ON N6A 5J7 Ph: 519-645-2007 Fx: 519-645-6575 Hours: Monday to Friday 8:30 a.m. – 5:00 p.m.	London Public Library – Central Branch 251 Dundas Street London, Ontario, 519-661-4600 Hours: Monday – Thursday: 9:00 a.m. to 9:00 p.m; Friday: 9:00 a.m. to 6:00 p.m. Saturday: 9:00 a.m. to 5:00 p.m. Sunday: 1:00 p.m. to 4:00 p.m.

Comments on the Report will be received until Friday June 12th, 2015. Please Contact:

Scott Mathers, MPA, P.Eng. Environmental and Engineering Services Manager Stormwater Management Unit 300 Dufferin Street, 9 th Floor London, ON N6A 4L9 Phone: 519.661.2500 ext.4430 Fax: 519.661.2355 Email:smathers@london.ca

The Class EA process entitles members of the public, interested groups, and review agencies who have significant concerns about the proposed project (if such concerns cannot be resolved), to request the Minister of Environment to issue an order to comply with Part II of the EA Act. This is known as a “Part II Order”, bumping up the status of this project to a full Individual Environmental Assessment. The procedure for a “Part II Order” request is as follows:

- The person with the concern shall make a written submission to the Ministry of the Environment and Climate Change, Floor 11, 77 Wellesley St. W Toronto ON M7A 2T5, Fax: 416-314-8452 and the Director, Environmental Approvals Branch, Ministry of the Environment and Climate Change Floor 12A, 2 St. Clair Ave W Toronto ON M4V 1L5,

Agenda Item #

Page #

--	--

with a copy to the City of London, requesting the Minister to comply with 'Part II' of the Environmental Assessment Act. This written request must be submitted to the Minister within the 30-calendar day review period after the proponent has filed the Screening Report on public record and issued the Notice of Completion;

- The Minister shall consider both sides of the argument and make a decision; If the Minister does not agree to the "Part II Order" then the Minister shall give notice with reasons to the person making the request and to the proponent.

Subject to the comments received as a result of this notice and receipt of the necessary approvals, the City of London can proceed with design and implementation.