



Colborne and South Street Construction

Infrastructure Renewal Program

January 22, 2015

Dear Property Owner/Resident:

The City of London plans to reconstruct your street to improve the quality and reliability of your water, sewer, and road infrastructure. This letter provides you with information about the project, and notifies you of a public meeting to discuss project impacts to the area.

Project Details

- Location:** Colborne Street from Grey Street to the Thames River
South Street from Colborne Street to Maitland Street (Map included)
- Schedule:** Tentative start – spring 2015
Timeline – approximately 7 months
- Scope:**
- Watermain and water services
 - Sanitary sewers and private drain connections where requested
 - Storm sewers and channel improvements from storm outlet to Thames River
 - Road reconstruction including new curbs and sidewalks, raised intersections, street light improvements, parking bays and bicycle lanes.

Public Meeting

Come out to an informal open house to learn more about the project and how it will impact you.

- Date:** Wednesday February 4, 2015
- Time:** 5:30 p.m. to 7:30 p.m.
- Location:** St. John Catholic French Immersion School, 449 Hill Street
- Purpose:**
- View the construction plans
 - Get answers to your questions
 - Review the changes to the Colborne streetscape

SOHO Community Plan Streetscape Improvements

Similar to the Horton Street Reconstruction project completed in 2012, this work includes the integration and investment of streetscape improvements along the Colborne street corridor. These enhancements coincide with the June 2011 Council approved SoHo Community Improvement Plan and the Old Victoria Hospital Lands Secondary Plan approved in June 2014. The improvements will facilitate and bring both aesthetic and functional changes to the area and is the second of many projects to come in the SoHo area that implement the vision for the SoHo Community while providing an opportunity to begin changing the character of the area.

Traffic Management

Traffic studies have determined that the signalized intersection at Colborne and Grey Streets is un-necessary and will be converted to a three-way stop as part of this project. In addition, to facilitate construction and property owner access, Grey Street from Waterloo to Maitland and South Street from Waterloo to Maitland will temporarily be converted from one-way streets to two-way streets.

Contact Information

If you have any questions about this project, please contact one of the people listed below,

City's Project Manager: Doug Law, C.E.T., dlaw@london.ca, 519-661-2500 ext 5896

City's Engineering Consultant : Dave Carter, P.Eng. AECOM, dave.carter@aecom.com, 519-963-5864

We will provide you with an additional letter prior to construction to let you know more details about the schedule and impacts from the work. If you have tenants, please notify them of this upcoming construction project.

Sincerely,

Ugo DeCandia, P.Eng
Environmental Services Engineer
Wastewater and Drainage Engineering Division

Cc Councillor Tanya Park
John Braam, Managing Director and City Engineer

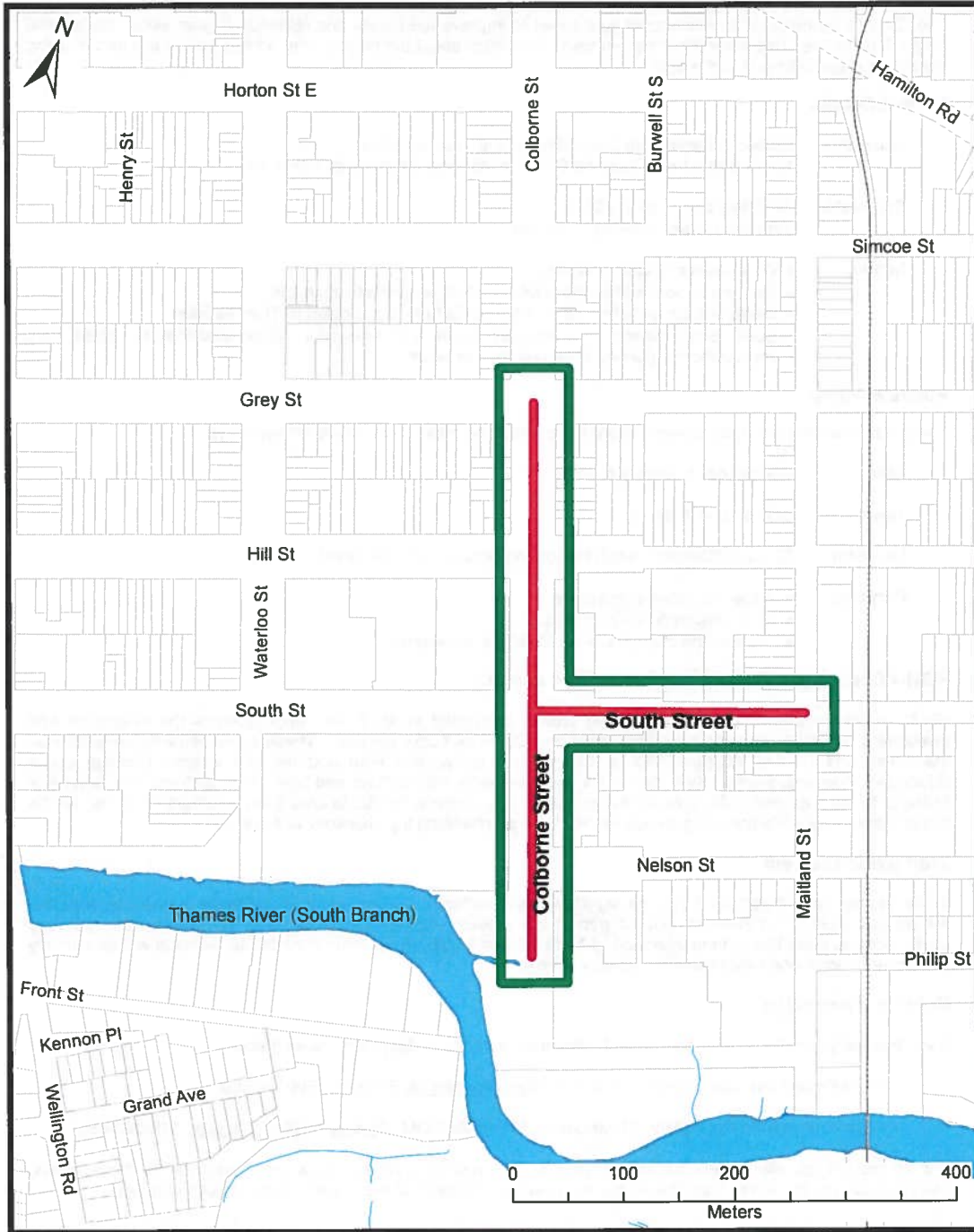


London
CANADA

Colborne and South Streets Construction

Colborne Street (Grey Street to Thames River)
South Street (Colborne Street to Maitland Street)

Infrastructure Renewal Program Location Map



Executive Summary

Natural Resource Solutions Inc. (NRSI) was retained in June 2013 by the City of London to complete an Environmental Impact Study (EIS) for the proposed replacement and ecological restoration of the Colborne Street storm sewer and outlet in London, Ontario. The existing combined sewer is located within the SoHo (South of Horton Street) redevelopment lands, for which an EIS was completed by NRSI in November 2013. The combined sewer outlets 60m from the Thames River on the subject site, and has been identified for reconstruction as part of the redevelopment of the Old Victoria Hospital lands, and the reconstruction includes separation of sanitary overflow and storm water providing an immediate and significant environmental improvement over current water quality conditions. This EIS is an addendum to the SoHo Redevelopment EIS (NRSI 2013).

The Thames River is identified as a Significant River, Stream and Ravine Corridor on Schedule B-1 of the Official Plan, which is equivalent to a Significant Valleyland under the Provincial Policy Statement (2014). Natural features on the subject site include a small channel that flows into the Thames River and a riparian forest comprised of a large proportion of invasive species surrounding the storm sewer. Habitat for wildlife species, including many significant species, is present on site and are considered throughout the design and re-construction process. The Thames Valley Corridor is London's most important natural, cultural, recreational and aesthetic resource. The City and community partners will preserve and enhance the natural environment, Thames River health, vistas, beauty and cultural heritage while accommodating compatible infrastructure, accessibility and recreation (TVCP, City of London 2001a).

The infrastructure project will involve the replacement of the existing combined storm sewer and outfall area, followed by ecological enhancement of the natural area, providing an overall benefit to the natural features on and surrounding the subject site. Improvements to the storm sewer and outfall area include the replacement of the existing sewer with larger and deeper piping, energy dissipation measures to reduce erosion, as well as ecological restoration of a portion of the outflow channel to the Thames River. Recommendations are made to mitigate impacts, so an overall benefit to the natural environment can be realized.

