



UTRCA Environmental Planning Services

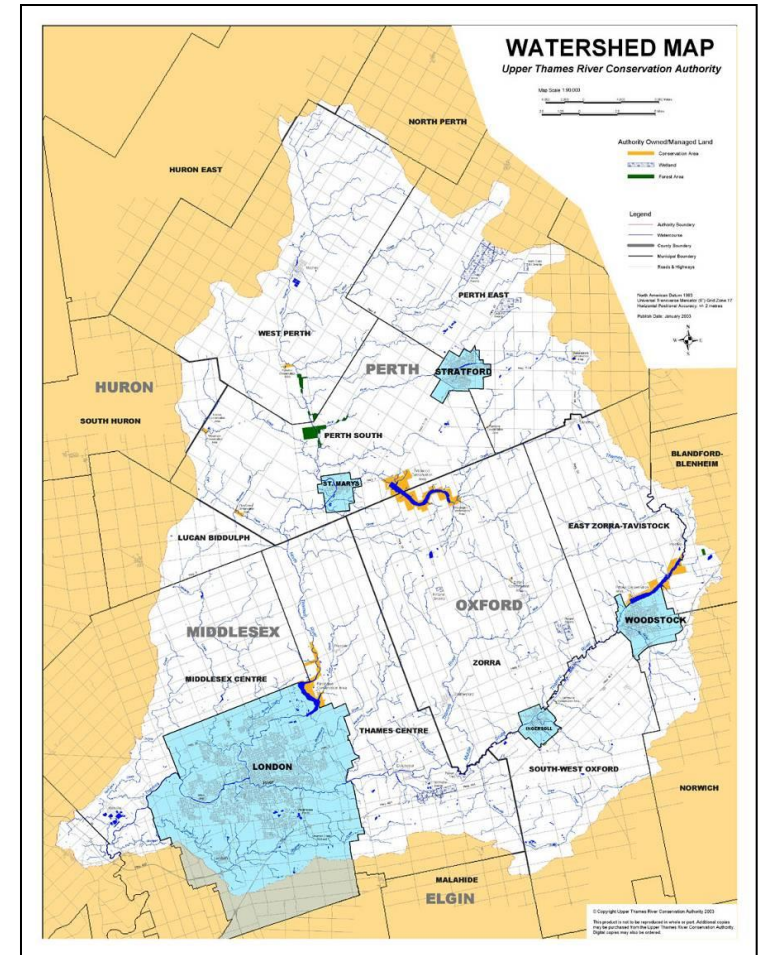
Presentation for New EEPAC Members

Presentation Outline

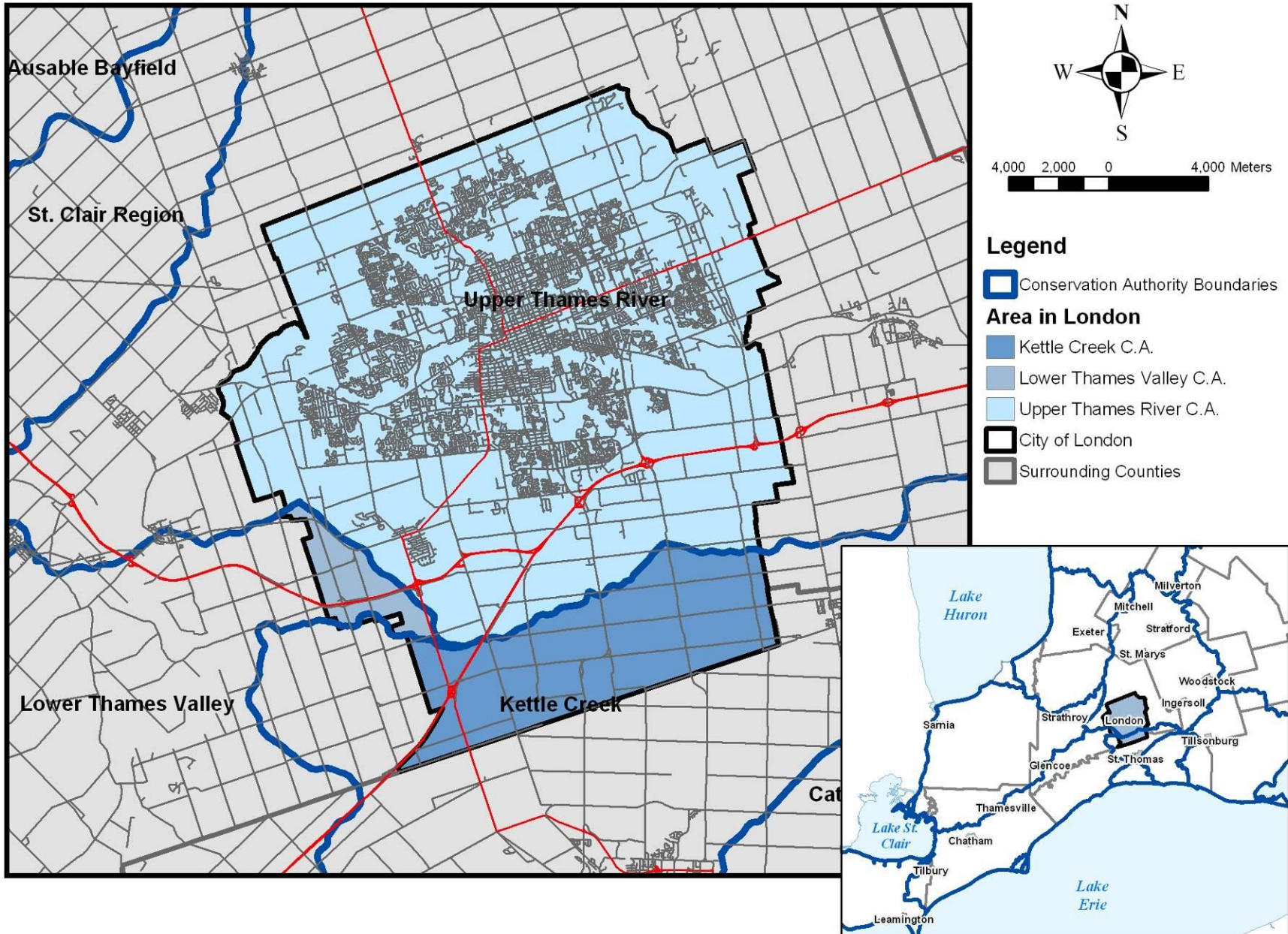
- Background on UTRCA
- UTRCA Environmental Planning Services
 - Land Use Planning
 - Conservation Authorities Act Regulations
 - Inquiry Services
- Questions

Upper Thames River Watershed

- 3,400 square km
- 515,000 + residents (2011)
- Mix of rural & urban land uses
- Drains to Lower Thames



City of London / Conservation Authorities



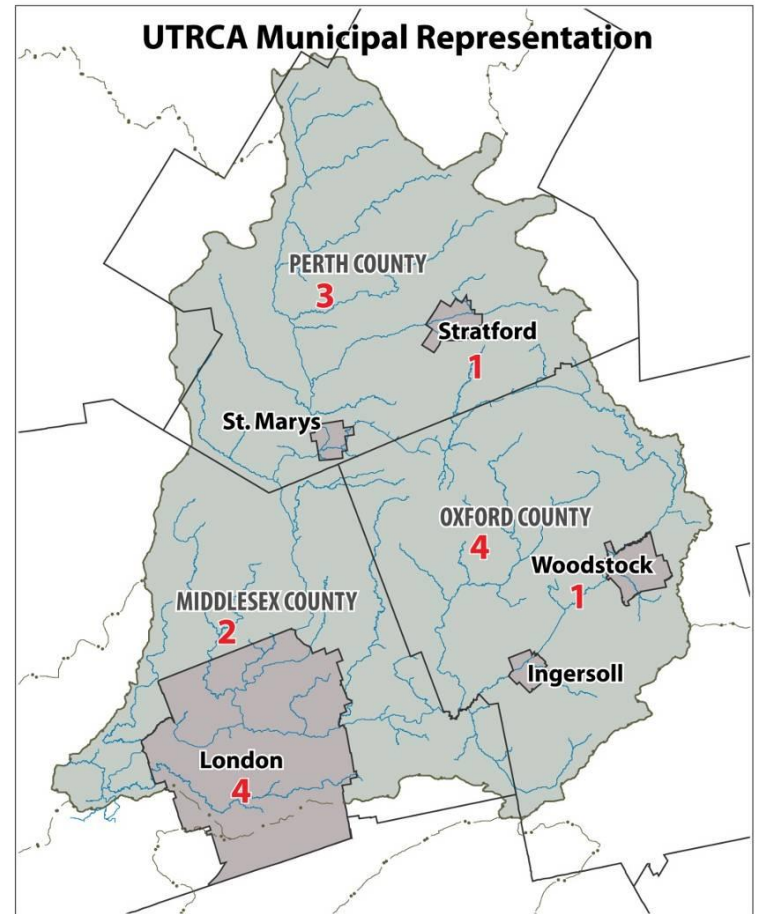
UTRCA Vision: Inspiring a Healthy Environment

Mission:

- To protect life and property from flooding and erosion
- To protect and enhance water quality
- To preserve and manage natural areas
- To provide outdoor recreation opportunities

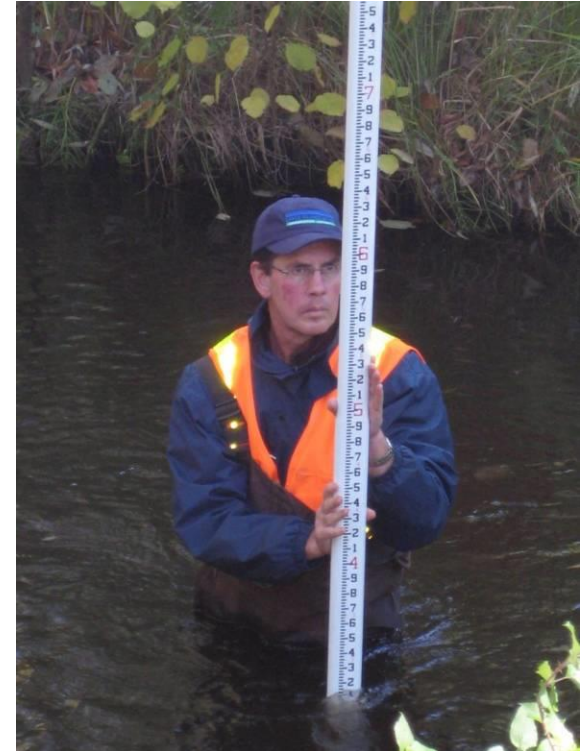
UTRCA Board of Directors

- Conservation Authorities are governed by a Board of Directors
- UTRCA has 15 Board Members
- Approximately half are elected the other half are citizen appointments



UTRCA Programs & Services

- Offer a broad range of programs & services
- Hydrology & Regulatory Services
 - Flood Control
 - Environmental Planning



UTRCA Staffing

- 76 full time staff, 80 seasonal staff

- Technical expertise:
 - Planners & GIS specialists
 - Water Resource Engineers
 - Hydrogeologist & River Morphology expertise
 - Ecologist & Biologists
 - Fisheries, Species at Risk



Environmental Planning Services

- Land Use Planning - Planning Act
- Regulations/Permits - Conservation Authorities Act
- Inquiry Services



Land Use Planning - Planning Act

- Work with municipalities to:
 - Manage the risk related to natural hazards
 - Identify and protect natural heritage and natural resources

- Provide municipalities with technical and planning advice to assist them as the decision maker with fulfilling their responsibilities under the Planning Act

CA Planning Services

- Provide application review and technical peer review
- Application Review
 - Identify issues and the need for more information
 - Disclosure of information related to Drinking Water Source Protection
- Technical Review
 - Peer review technical reports

UTRCA's Areas of Interest

- Natural Hazards
 - Flood plains
 - Hazardous steep slopes
 - Meander belts – river morphology
 - Wetlands – for their flood attenuation value

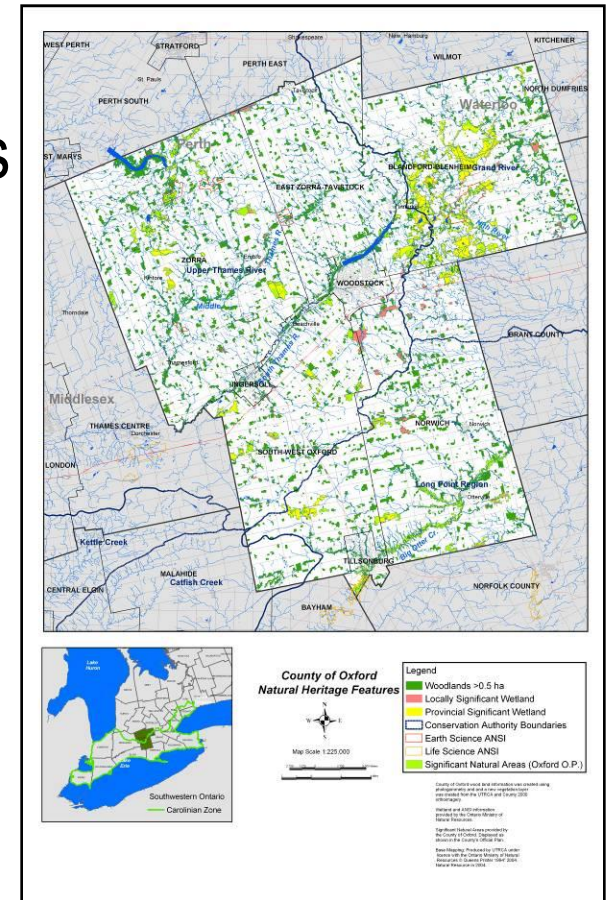


Sources of Information

- Historic Flood Plain Studies (Urban Areas)
- Flood Plain Estimation Study (Rural Areas)
- Erosion Hazard Mapping
- Wetland Inventories (MNR & UTRCA)
- Natural Hazards Technical Guides
- Comprehensive Regulation Limit Mapping (2006)

Areas of Interest

- Natural Heritage:
 - Wetlands – for their biological values
 - Woodlands
 - Fish Habitat
 - Wildlife Habitat
 - Natural Corridors
 - Threatened & Endangered Species Habitat



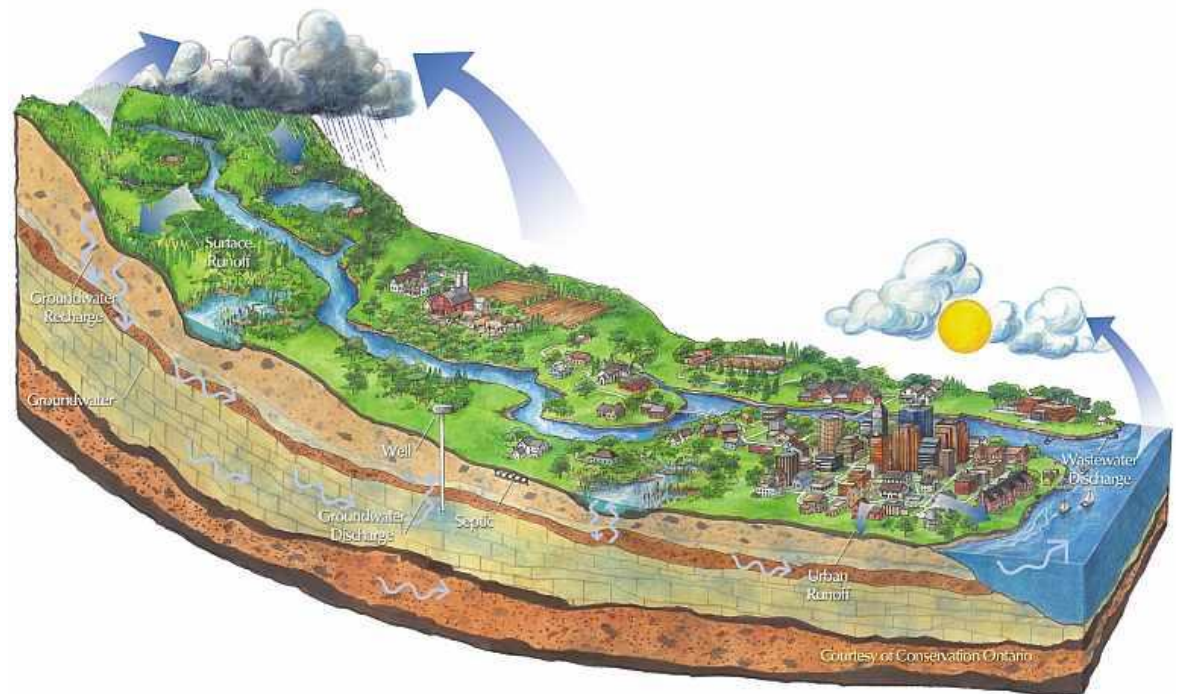
Sources of Information

- Historic Natural Heritage Inventories
- Wetland Inventories (MNR & UTRCA)
- Natural Heritage Reference Manual (2010)
- Middlesex Natural Heritage Study (2003)
- Middlesex Natural Heritage Systems Study (2014)

<http://thamesriver.on.ca/watershed-health/natural-heritage-studies/middlesex-natural-heritage-systems-study-2014/>

Areas of Interest

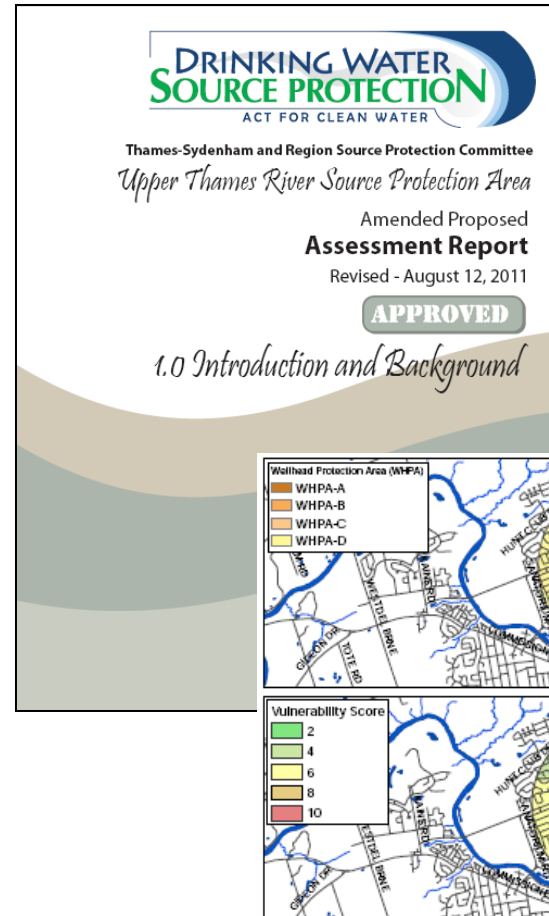
- Natural Resources
 - Groundwater Resources



March 19, 2015

Sources of Information

- Assessment Report for the Thames Sydenham and Region
- Municipal Drinking Water Systems Summary



http://www.sourcewaterprotection.on.ca/ar_UTRCA.html

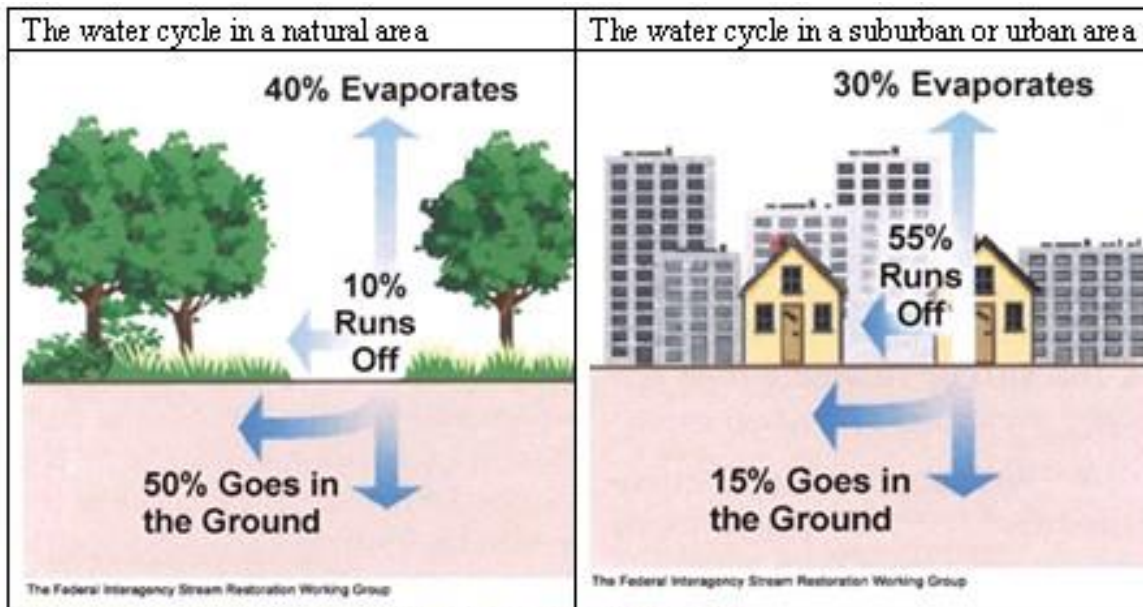
Areas of Interest

- Servicing Mitigation
 - Stormwater Management
 - Sediment & Erosion Control
 - Low Impact Development



Sources of Information

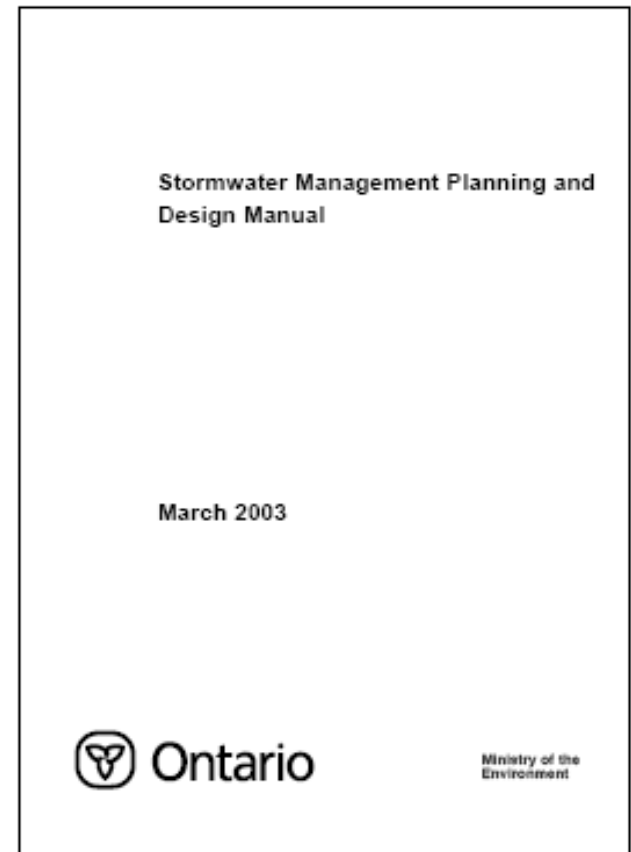
- MOE Stormwater Management Best Practices Manual (2003)
- Industry Standards



www.mmsd.com/wqi/pics/impervious1.jpg [water quality initiative](#)

March 19, 2015

EEPAC Orientation



Regulation Section 28 of the Conservation Authorities Act

- Permit required for:
 - construction or placing fill in area subject to flooding or erosion
 - for straightening, diverting, or altering the channel of a watercourse
 - Interference with wetlands

- Limited to “hazardous lands” as defined in the Act or Regulation

- Permit fees are charged

Why Regulate?

- Meant to be a hazard management tool
- Protect people and property from natural hazard processes
- Want to maintain functions such as:
 - Flood conveyance
 - Flood storage
 - Natural erosion processes
- Can achieve natural heritage objectives

Mapping & Inquiry Services

- Inquiries from:
 - Legal Inquiries
 - Real Estate
 - Consultants
 - Municipalities
 - General Public

- Fees charged for letters and mapping

Inquiries – Information Provided

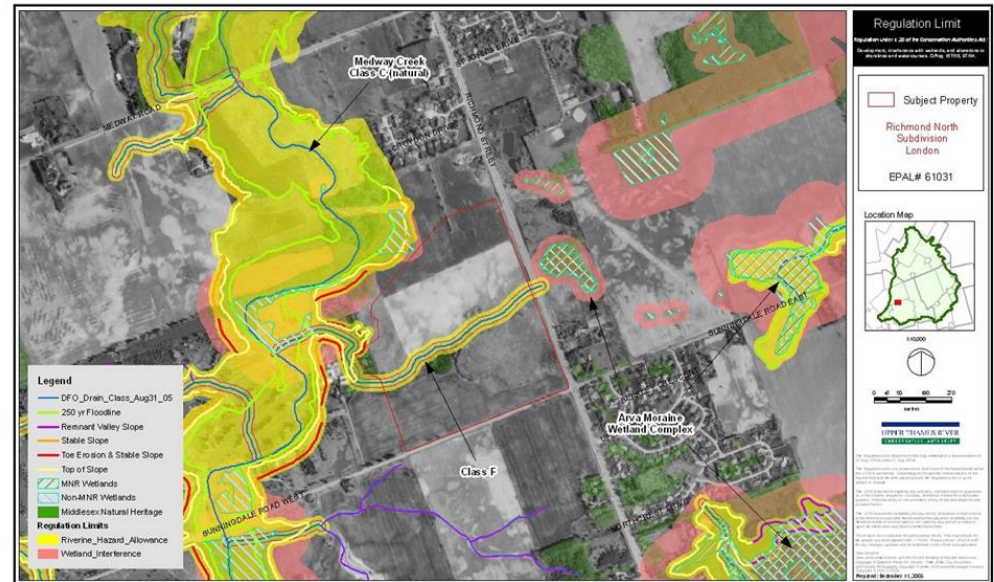
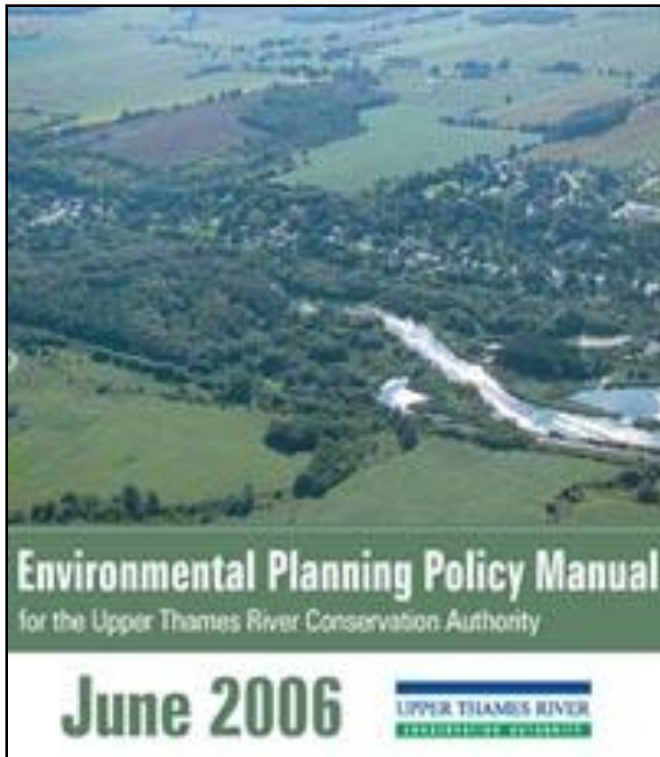
- Mapping -
 - 2010 photo (2006, 2000 available also)
 - Regulated Area - Natural hazards
 - Natural heritage features
 - Drinking Water Source Protection Information

- Letters include policy information

Summary

- UTRCA provides information to assist the City with making their decisions pursuant to the Planning Act
- London is also served by Kettle Creek and Lower Thames Valley CAs
- Provided Information is based on our areas of expertise
- Environmental Planning Service is one part of the overall UTRCA program

UTRCA Environmental Planning Policies, Information and Mapping are available on-line at www.thamesriver.on.ca





Questions?

Jeff Brick

brickj@thamesriver.on.ca

Mark Snowsell

snowsellm@thamesriver.on.ca

Christine Creighton

creightonc@thamesriver.on.ca