

Dog Park Updates

1. Service Dog Accommodation in Off-leash Parks
2. Update on Dingman Off-leash Dog Park
3. Urban Dog Parks Proposal
4. Timed Off-leash Areas in Selected City Parks Proposal
5. Discussion
6. Next Steps



London
CANADA

1. Service Dog Accommodation in Off-leash Parks

New accessibility requirements came into force on January 1, 2014.

The City's Accessibility Advisory Committee (ACCAC) requested that large service dogs be permitted to use the designated small dog sections of the existing off-leash parks.

Future considerations: paved entrance, accessible benches, shaded seating.

Small Dogs Corner

**Area for dogs under
10 kg (22 lbs.), dogs
with disabilities and
service dogs**



London
CANADA



London
CANADA

2. Update on Dingman Off-Leash Dog Park

Contractors were unable to get equipment onto site due to wet conditions.

The projected costs for drainage works extended well beyond the allocated project funds.

The site was abandon as a dog off-leash park.



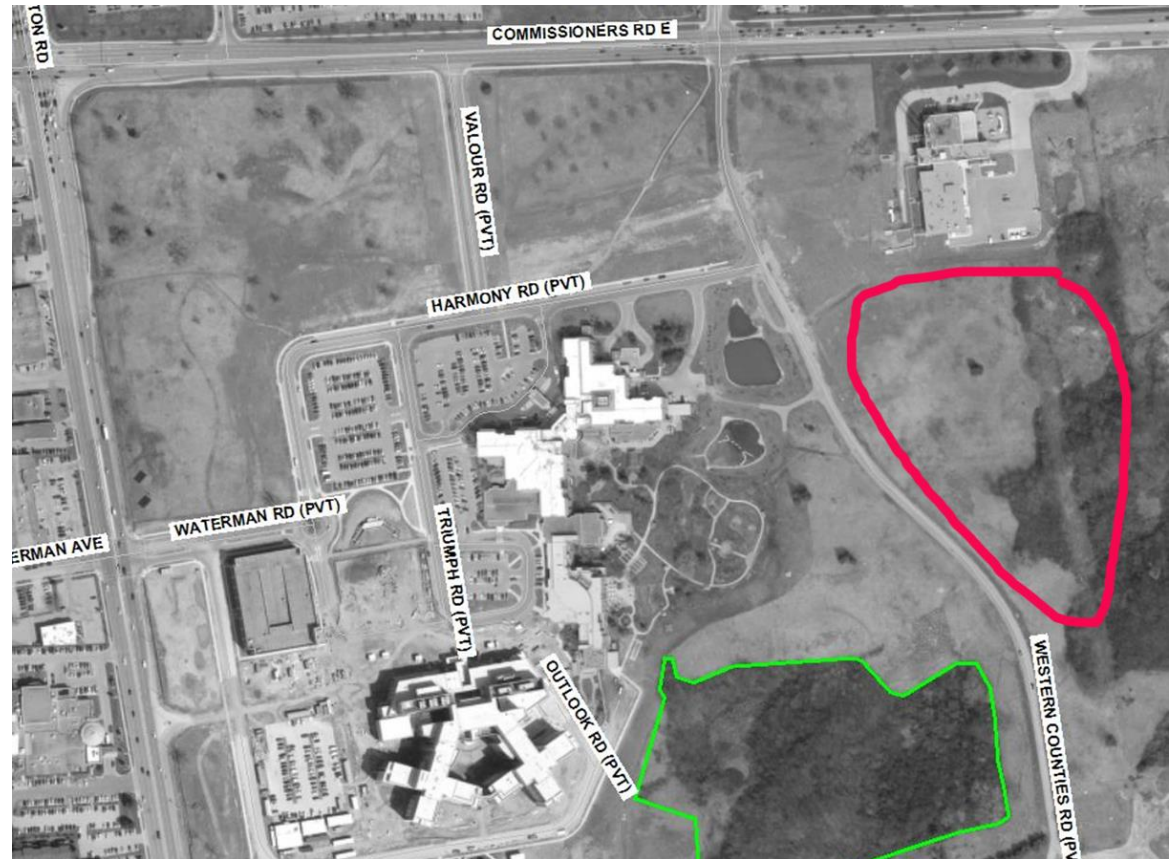


London
CANADA

2. Potential LHSC Lands - Off-Leash Dog Park

Site was identified as a preferred site in previous analysis.

LHSC to advise by March 2015.

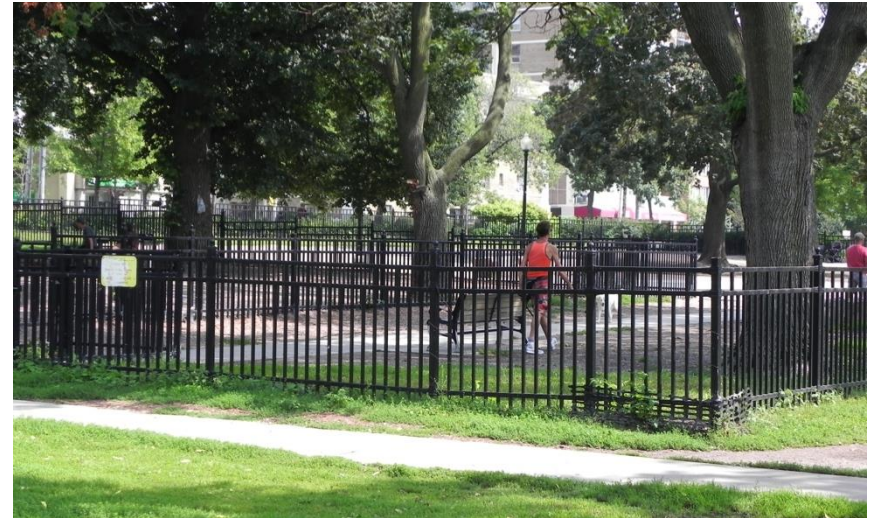


3. Urban Dog Parks

The City is exploring the option of developing **2 pilot** dog off-leash parks in Downtown London.

Many Londoners are choosing to live downtown, many have dogs and many are choosing not to drive or even own cars.

389 dog license holders live in the urban core but actual number is closer to 710 dogs [assuming 53% registration]



Maple Leaf Gardens – Dog Park Toronto



Lakeshore East Park Urban Dog Park, Chicago, IL

3. Urban Dog Parks

Steps toward implementation:

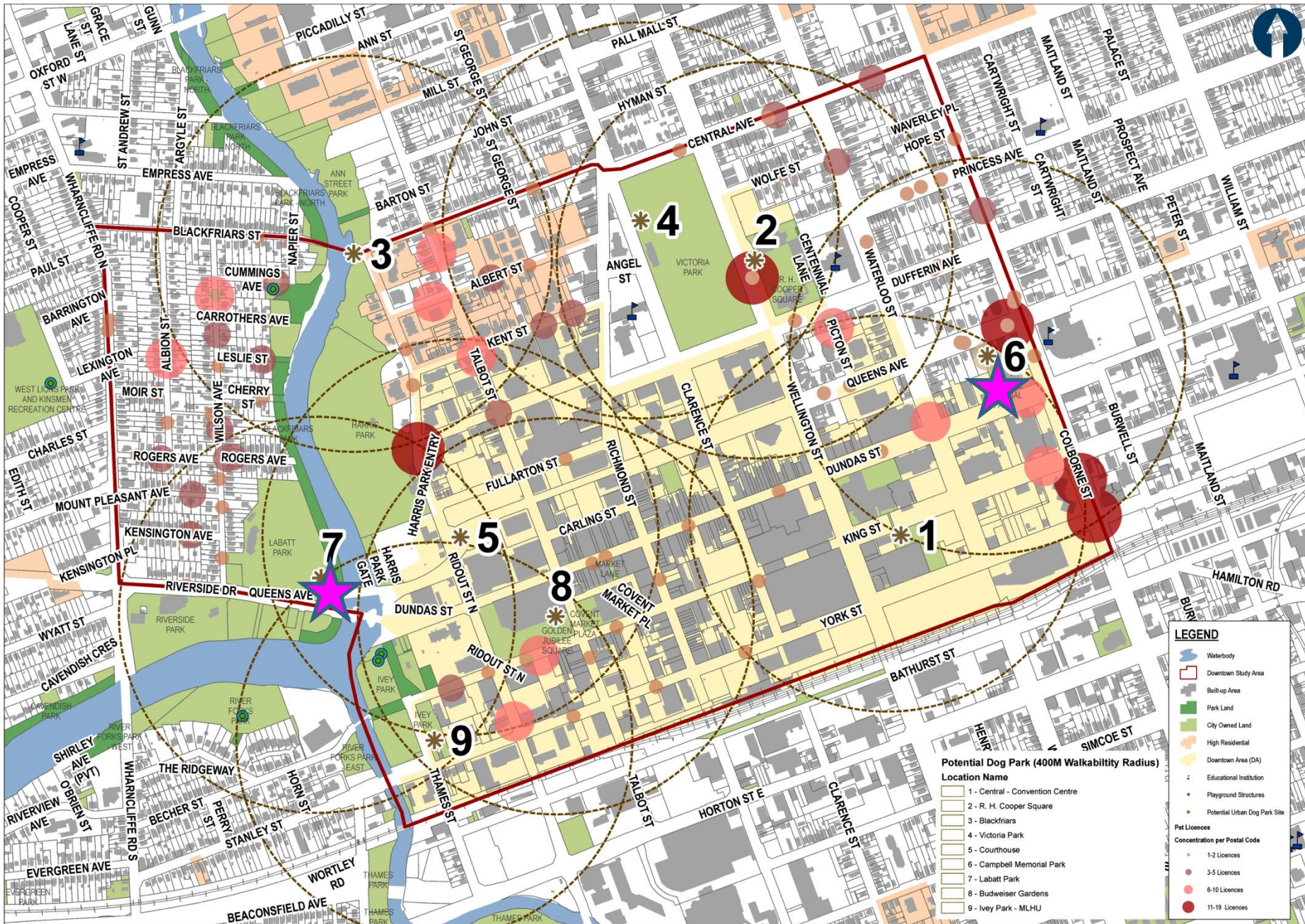
1. Review of precedents in NA Cities
2. Develop Appropriate Site Selection Criteria
 1. 5 min. walk to concentration of dog licenses
 2. City-owned lands
3. Apply Criteria to downtown area
4. Report to AWAC
5. Resolve Operational Issues
6. Finalize Designs
7. Report to Community and Protective Services Committee
8. Public Notification
9. Construction



Morgan Crossing Dog Park, South Surrey, BC



Chelsea Waterside Dog Run Park - NYC





London
CANADA

3. Urban Dog Parks – Campbell Memorial Park





London
CANADA

3. Urban Dog Parks – Labatt Park





4. Timed Off-leash Areas in Selected City Parks

Issues to discuss:

1. Review of precedents in other NA Cities
2. Develop Timed Dog Off-Leash Policy
3. Adaptation of existing site selection criteria to timed use
4. Operational Issues:
 1. Garbage
 2. Signage
 3. Enforcement
 4. Other?



London
CANADA

5. New Funding Source from Dog Licenses

Dog Licensing now provides \$50K per annum towards Off-leash Dog Park development and maintenance.

Holders of pet licenses are issued a Pet Owners Rewards Card that provides discounts to veterinarian services and retail stores in London. For further information, visit <http://www.london.ca/petrewards>



Licensed to Save: Pet Rewards Program

[A Pet Owners Rewards Card](#)

[Participating Vendors](#)

[Vendor Enrollment](#)



London
CANADA

6. Discussion + Next Steps
