



**Our Rapid Transit Initiative**

# Moving London Forward

**Cycling Advisory Committee**





# THE LONDON PLAN

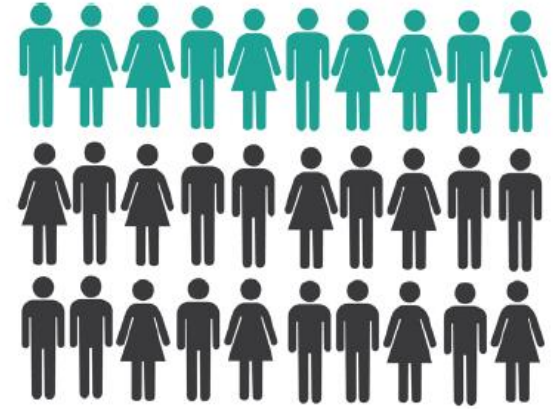
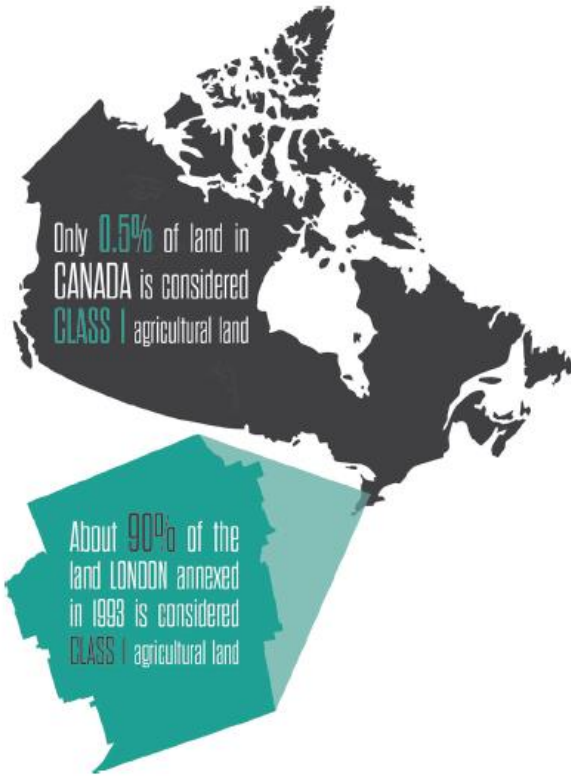
EXCITING. EXCEPTIONAL. CONNECTED.



#LDNPLAN



# Now



**1 IN 3** Londoners are **MILLENNIALS**: born between 1980 and 2000



1996  
12.4 million rides

2014  
24.1 million rides

Transit Ridership in London has grown by **94%**



More than **60%** of Londoners live **ALONE** or with only **ONE** other person.

# 2035



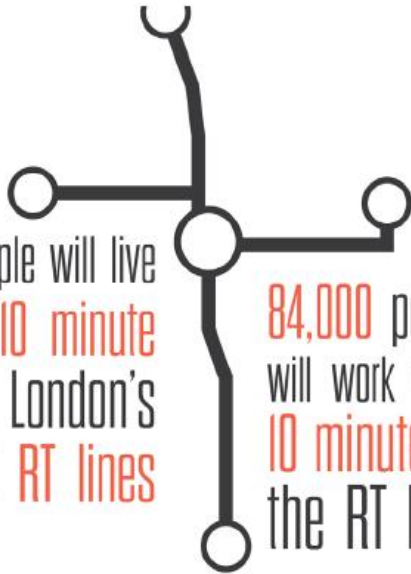
Our population will grow by **77,000** people

Employment will grow by **43,000** new jobs



**1 IN 3** Londoners will be **55 or older**

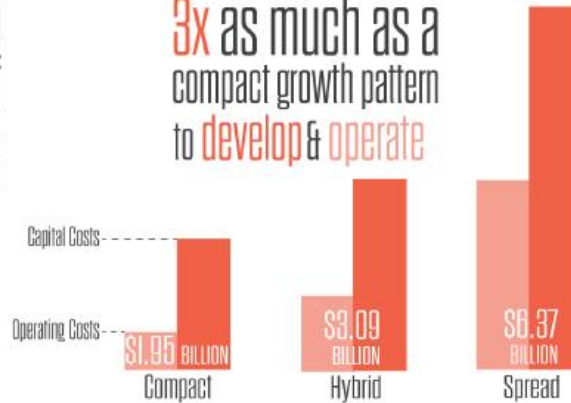
**115,000** people will live within a **10 minute** walk of London's proposed **RT lines**



**84,000** people will work within **10 minutes** of the RT lines

We have choices in how we will grow...

It will cost more than **3x** as much as a compact growth pattern to **develop & operate**



Approximately **1 in 3** people in the labour force will be **FOREIGN-BORN**



# What is Shift?

---





The Smart Moves 2030 Transportation Master Plan focused on enhanced mobility choices in London to create a multi-modal transportation system. The plan sets a 20% mode share target for public transit, up from 12.5% today.

# Objectives for Rapid Transit

---

- Cities build rapid transit to achieve many objectives – economic growth, mobility, community building
- The prioritization of these objectives can, and should, influence the design of rapid transit

**ECONOMIC  
DEVELOPMENT  
& CITY  
BUILDING  
FOCUS**

**TRANSPORTATION  
CAPACITY  
& MOBILITY  
FOCUS**

**COMMUNITY  
BUILDING  
& REVITALIZATION  
FOCUS**

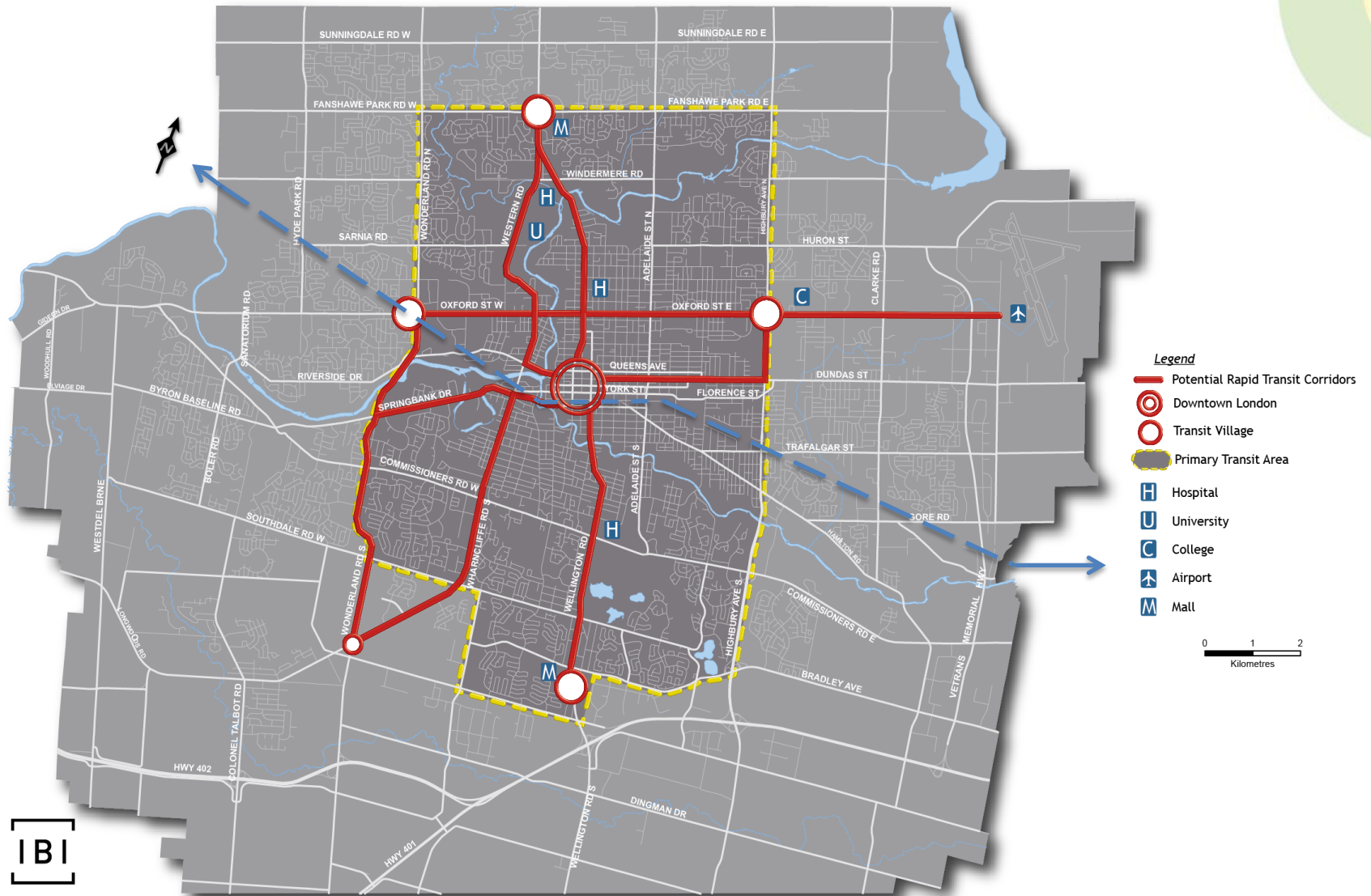
# What is Rapid Transit?

---

- ***Means the movement of many people, at the same time, and at higher speeds using vehicles such as buses or trains***
  - vehicles operating on designated rights of way
  - queue jump lanes at key intersections to allow transit vehicles to get ahead of traffic
  - high capacity vehicles
  - high frequency service
  - traffic signal priority at intersections to assist transit vehicles in maintaining their schedule
  - quality passenger amenities including enhanced stations, real time information and automated fare purchase stations



# Project Study Area and Potential Corridors



# Public Engagement



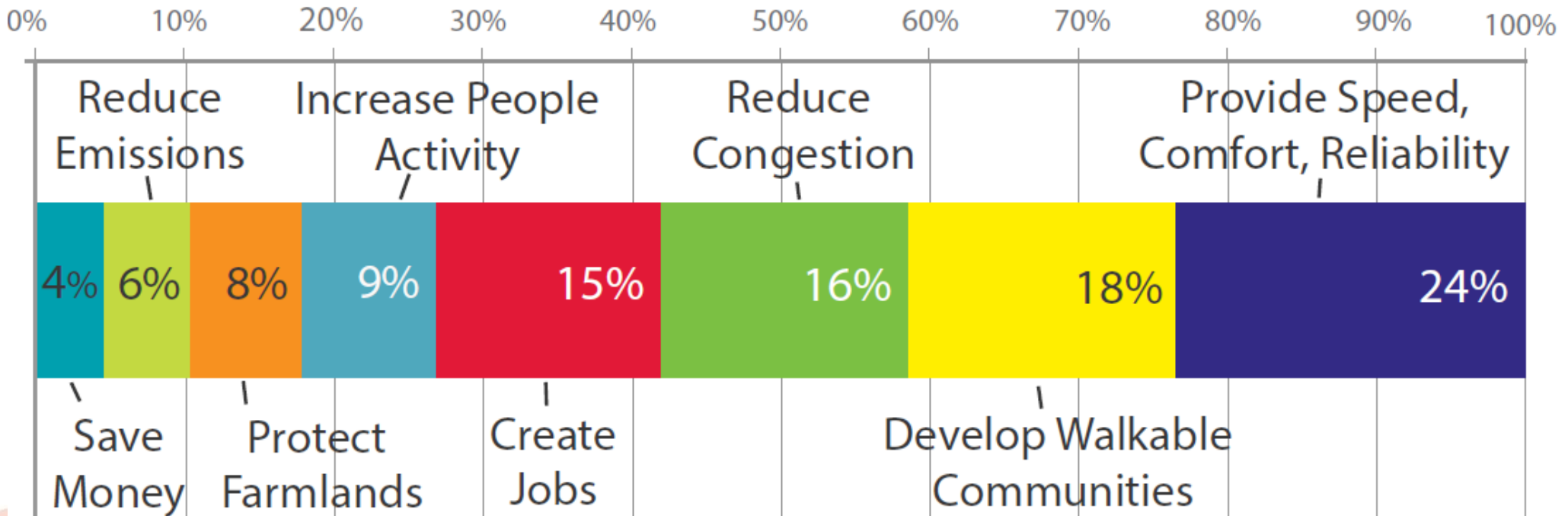
- ✓ Ongoing Public Engagement Initiative
- ✓ 13 events so far, reached 3800 individuals
- ✓ 10 upcoming events planned, listing on website
- ✓ Engagement planned for Fanshawe, festivals, sporting events, interest groups
- ✓ Over 730 followers on Twitter
- ✓ Over 300 followers on Facebook
- ✓ Initial feedback survey has over 700 responses
- ✓ Survey is online
- ✓ Over 1600 contacts in database

# Feedback to Date

## How You Think Rapid Transit Can Benefit London?

We've received over 600 responses to this question as part of the launch of Shift, reflecting a wide range of potential benefits.

PERCENTAGE OF RESPONSES TO DATE



# Project Engagement

Get involved,  
be part of the

**shift**



[shift@london.ca](mailto:shift@london.ca)



[@shiftldnont](https://twitter.com/shiftldnont)



[facebook.com/shiftldnont](https://facebook.com/shiftldnont)



[@shiftldnont](https://instagram.com/shiftldnont)



**2013**

Council approves “Smart Moves” Transportation Master Plan

**2014**

“The London Plan,” the City’s new Official Plan (draft), establishing a vision for future growth, is introduced.

**February 2015**

Shift is launched with public information centre at Central Library.

**Early-Mid 2015**

Assessments of preferred alternatives for technology and alignment

**Mid-Late 2015**

Preferred corridor for Environmental Assessment selected

**Early 2016**

Detailed design for the RT route and plans for construction / funding

**2020**

A new rapid transit system is up, running and ready for riders in London