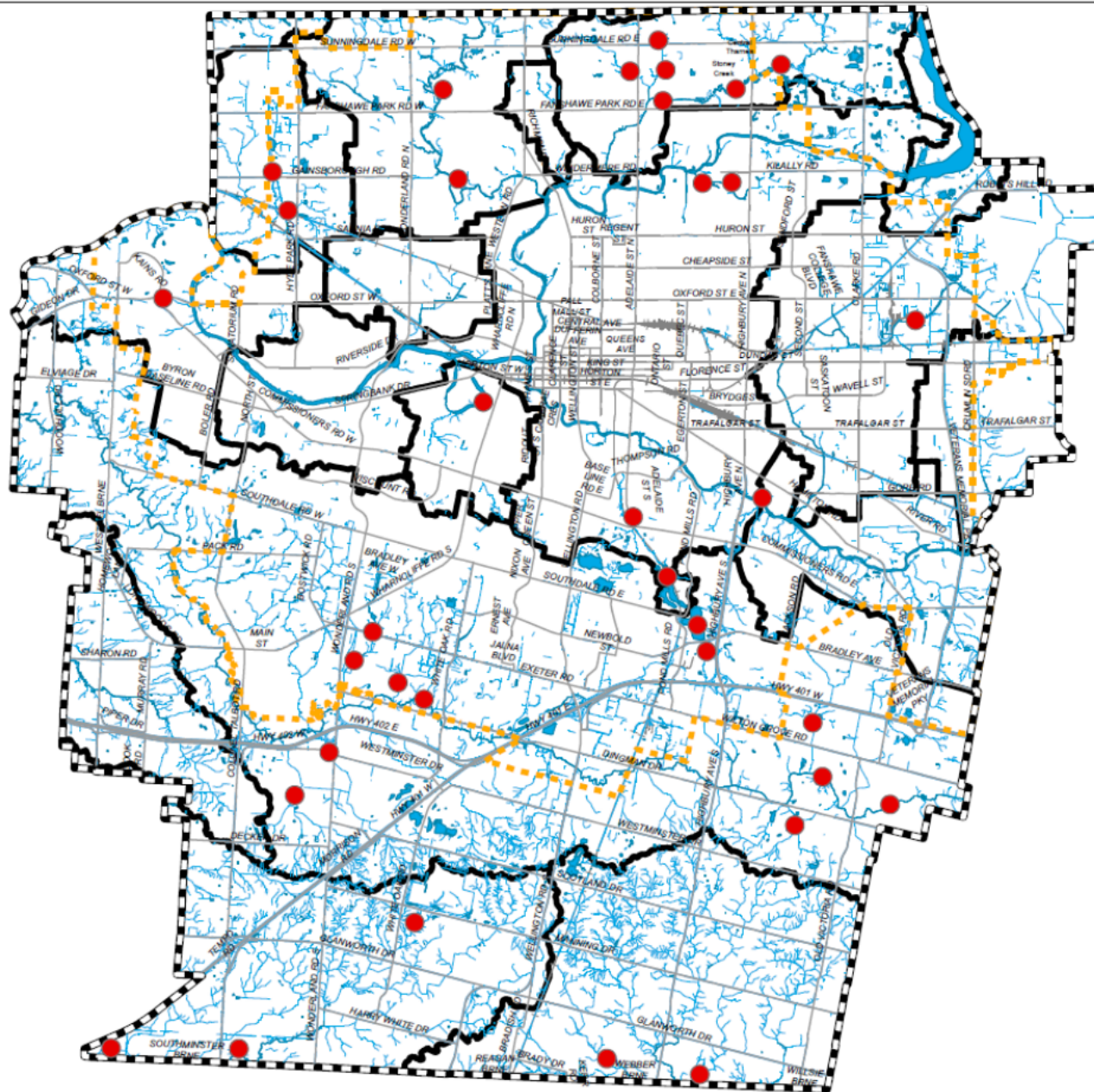


# **Humane Urban Wildlife Conflict Policy: Beaver Protocol**





1:115,000



**Legend:**

- Know Beaver Activity Location
- Water Course, Natural Bodies of Water and Existing SMWF's
- Subject Watershed Boundary
- Road
- Railroad
- Urban Growth Boundary

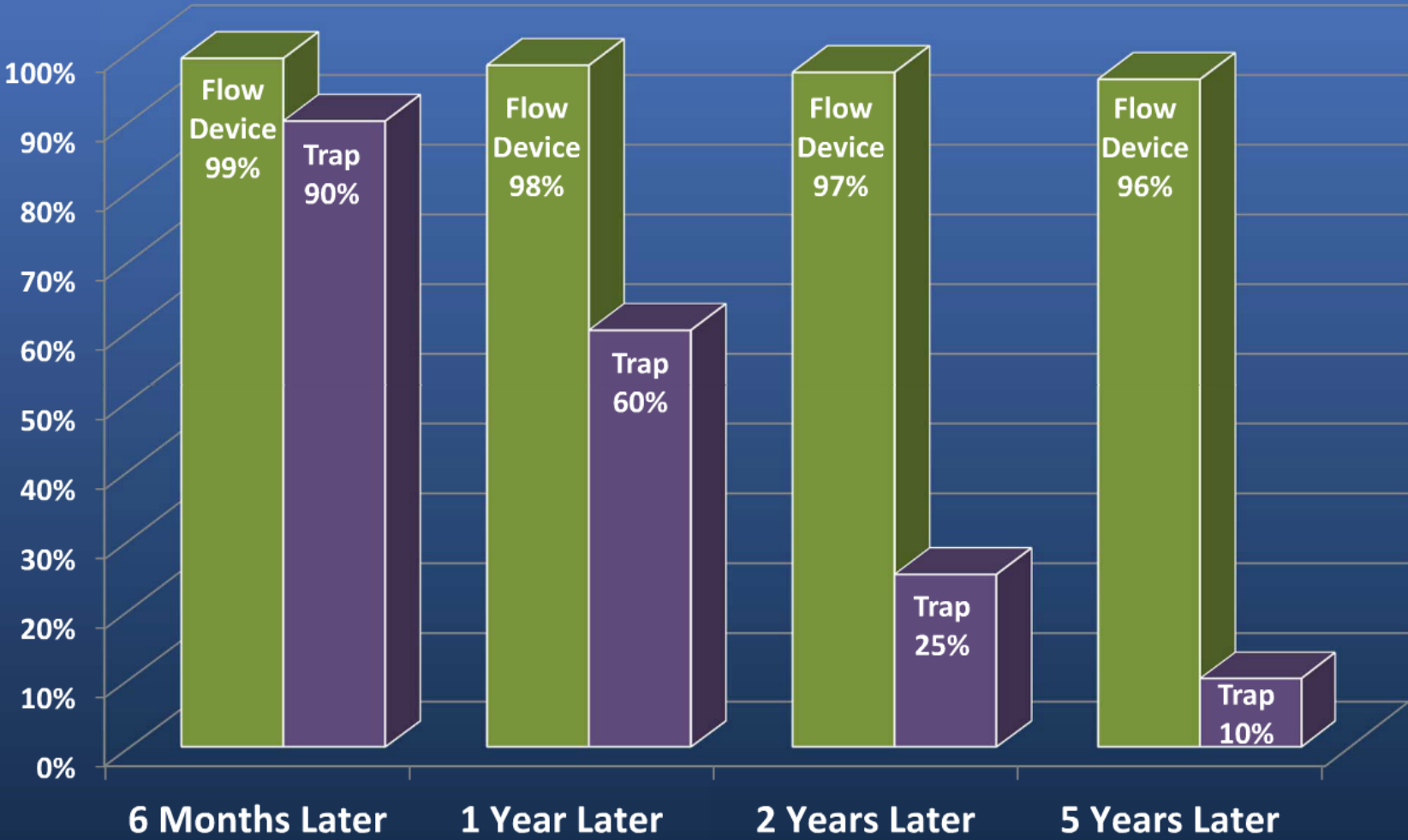
Map Produced by the Stormwater Management Unit

300 Dufferin Avenue,  
PO Box 5035  
London, Ontario  
N6A 4L9  
[www.London.ca](http://www.London.ca)



**CITY OF LONDON - BEAVER ACTIVITY INVENTORY**

# Beaver Management Effectiveness



Data Provided by Beavers Solutions LLC.  
Sample Size - Over 500 Sites

# HUMANE URBAN WILDLIFE CONFLICT POLICY: BEAVER PROTOCOL

March 10, 2015

City of London

Version: 2.0

## Why have a protocol?

To successfully implement the City's Humane Urban Wildlife Conflict Policy. Specific protocols are required to address potential human wildlife conflicts. This protocol will ensure that beavers are treated in a respectful and consistent manner, balancing the various needs to protect the beaver and their habitat; the overall environment; City infrastructure; people; and property.



## Needs of the Beaver

Beaver communities require a minimum of 1-1.5 meters of standing water where their lodge is located for protection from predators and to successfully weather the winter months. They also can build secondary downstream dams to create shallower ponds to access new trees for food, as well as for ease and safety of travel. They require access to woody vegetation for building materials and food.

## Primary Goals of the Protocol

The protocol attempts to balance the following goals:

- Respect and protect beavers in their natural habitat;
- Allow for enhancements to biodiversity and the creation of wetland environments;
- Educate the public about the value of beaver created wetlands;
- Protect critical infrastructure;
- Protect people and property from flooding; and
- Maintain the use of the City's pathway and trail networks.

## Governing Principle

Creation of beaver ponds / marshes have many positive ecological benefits, but sometimes negative impacts occur that require intervention. This governing principle of this protocol is to strive to coexist with the beaver community in its existing location whenever possible. Use low impact, non-lethal control methods as first options when any of the primary goals of the protocol are negatively impacted. If all reasonable alternatives have been exhausted for coexistence, relocate the beavers to an appropriate alternative site only under specific circumstances and in accordance with the Ministry of Natural Resources and Forests (MNR) legislation and the Council's approved Humane Urban Wildlife Conflict Policy.

## Continuous Improvement

The protocol will be reconsidered and brought back to Council by the middle of 2016 following the first year of implementing the protocol. Going forward, any significant changes to the protocol will be reported back to the various stakeholders and Council prior to implementation.

# Primary Goals of the Protocol

Need to Balance several goals

## Respect and Protect Beavers in their Natural Habitat

### Security

Beavers build big beaver dams to provide protection from predators. Beavers need a depth of water to make their dams. Beavers that build and maintain the dams.



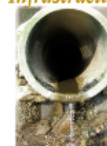
## Maintain the Use of the City's Pathway Networks



## Allow for the Creation of Wetland Environments



## Protect Critical Infrastructure



### Protect People from Flooding



### Protect Property from Flooding



## Protect the Existing Environment



# *Respect and Protect Beavers in their Natural Habitat*

## *Security*

Dams are built by beavers to provide ponds as protection against predators.

Beavers need a depth of one (1) meter year round to access their food and survive the winter.



## *Security*

Dams are built by beavers to provide ponds as protection against predators.

Beavers need a depth of one (1) meter year round to access their food and survive the winter.

*Allow for the Creation  
of Wetland  
Environments*







# *Protect the Existing Environment*



*Species at Risk*



*Waxy-rayed Lampmussel*

*Species at Risk*



Wavy-rayed Lampmussel

*Protect Critical  
Infrastructure*



*Protect People from  
Flooding*



*Protect Property from  
Flooding*



*Protect People from  
Flooding*



*Protect Property from  
Flooding*



*Maintain the Use of the  
City's Pathway  
Networks*



# Primary Goals of the Protocol

Need to Balance several goals

## Respect and Protect Beavers in their Natural Habitat

### Security

Beavers build big beaver dams to provide protection from predators. Beavers need a depth of water to make their dams. Beavers that build and maintain the dams.



## Maintain the Use of the City's Pathway Networks



## Allow for the Creation of Wetland Environments



## Protect Critical Infrastructure



### Protect People from Flooding



### Protect Property from Flooding



## Protect the Existing Environment



# Next Steps

*Implement the protocol  
over the next year.  
"2015 Learning Year"*



*Incorporate costs into  
multi-year budget.*



*Bring back to  
Committee the results  
of the protocol  
mid-2016.*





*Implement the protocol  
over the next year.  
"2015 Learning Year"*





*Incorporate costs into  
multi-year budget.*



*Bring back to  
Committee the results  
of the protocol  
mid-2016.*



# Next Steps

*Implement the protocol  
over the next year.  
"2015 Learning Year"*



*Incorporate costs into  
multi-year budget.*



*Bring back to  
Committee the results  
of the protocol  
mid-2016.*

