



Our Rapid Transit Initiative

Moving London Forward

LTC Long Term Working Group





THE LONDON PLAN

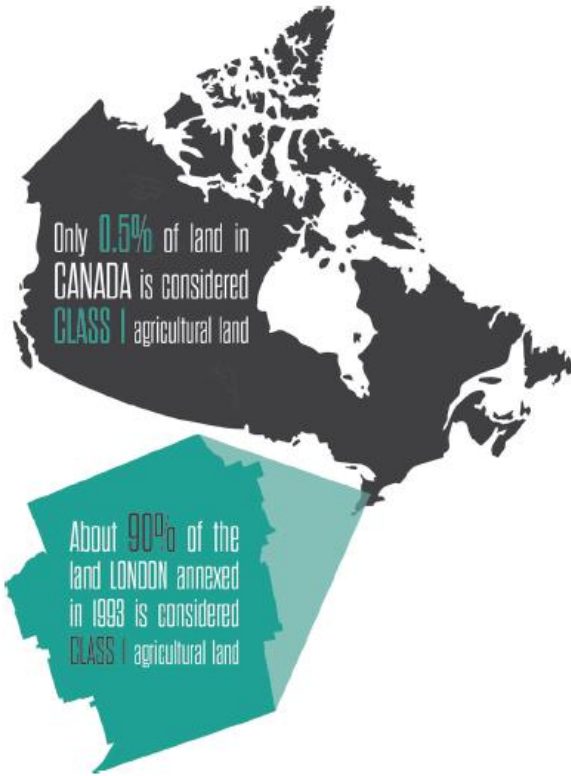
EXCITING. EXCEPTIONAL. CONNECTED.



#LDNPLAN



Now



1 IN 3 Londoners are **MILLENNIALS**: born between 1980 and 2000



1996
12.4 million rides

2014
24.1 million rides

Transit
Ridership
in London has
grown by **94%**



2035



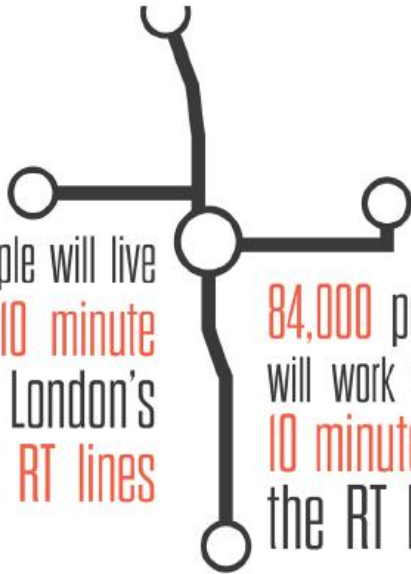
Our population will grow by **77,000** people

Employment will grow by **43,000** new jobs



1 IN 3 Londoners will be **55** or older

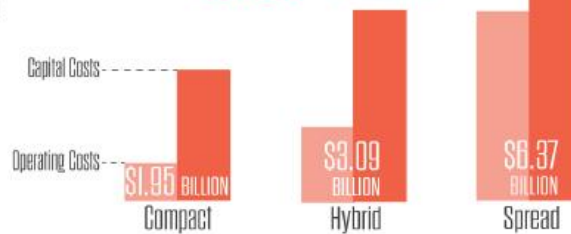
115,000 people will live within a **10 minute** walk of London's proposed **RT lines**



84,000 people will work within **10 minutes** of the RT lines

We have choices in how we will grow...

It will cost more than **3x** as much as a compact growth pattern to **develop & operate**



Approximately **1 in 3** people in the labour force will be **FOREIGN-BORN**



What is Shift?

A word cloud featuring various terms related to the 'Shift' project. The words are arranged in a dense, overlapping pattern with varying font sizes and colors. The most prominent words include 'Shift', 'transportation', 'sustainable', 'mobility', 'RAPID', 'safer', 'modern', 'cycling', 'dedicated', 'HOV', 'stations', 'trains', 'LRT', 'safety', 'faster', 'reliable', 'access', 'intelligent', 'dedicated', 'HOV', 'sidewalks', 'lights', 'fares', 'supply', 'fast bus', 'Transit BRT', 'passengers', 'optimization signals', 'landuse', 'city', 'future', 'building', 'convenient', 'trains', 'LRT', 'strategic', 'rehabilitation', 'traffic', 'streets', 'survey', 'Transt', 'bike', 'motorist', 'smart', 'economic', 'operations', 'travel', 'bridges', 'goods', 'movement', 'signals', 'queue', 'service', 'multimodal', 'plan', 'pedestrians', 'economic', 'motorist', 'smart', 'pedestrians', 'motorist', 'smart', 'pedestrians', 'motorist', 'smart'. The colors range from purple and blue to green and yellow.



The Smart Moves 2030 Transportation Master Plan focused on enhanced mobility choices in London to create a multi-modal transportation system. The plan sets a 20% mode share target for public transit, up from 12.5% today.

Objectives for Rapid Transit

- Cities build rapid transit to achieve many objectives – economic growth, mobility, community building
- The prioritization of these objectives can, and should, influence the design of rapid transit

**ECONOMIC
DEVELOPMENT
& CITY
BUILDING
FOCUS**

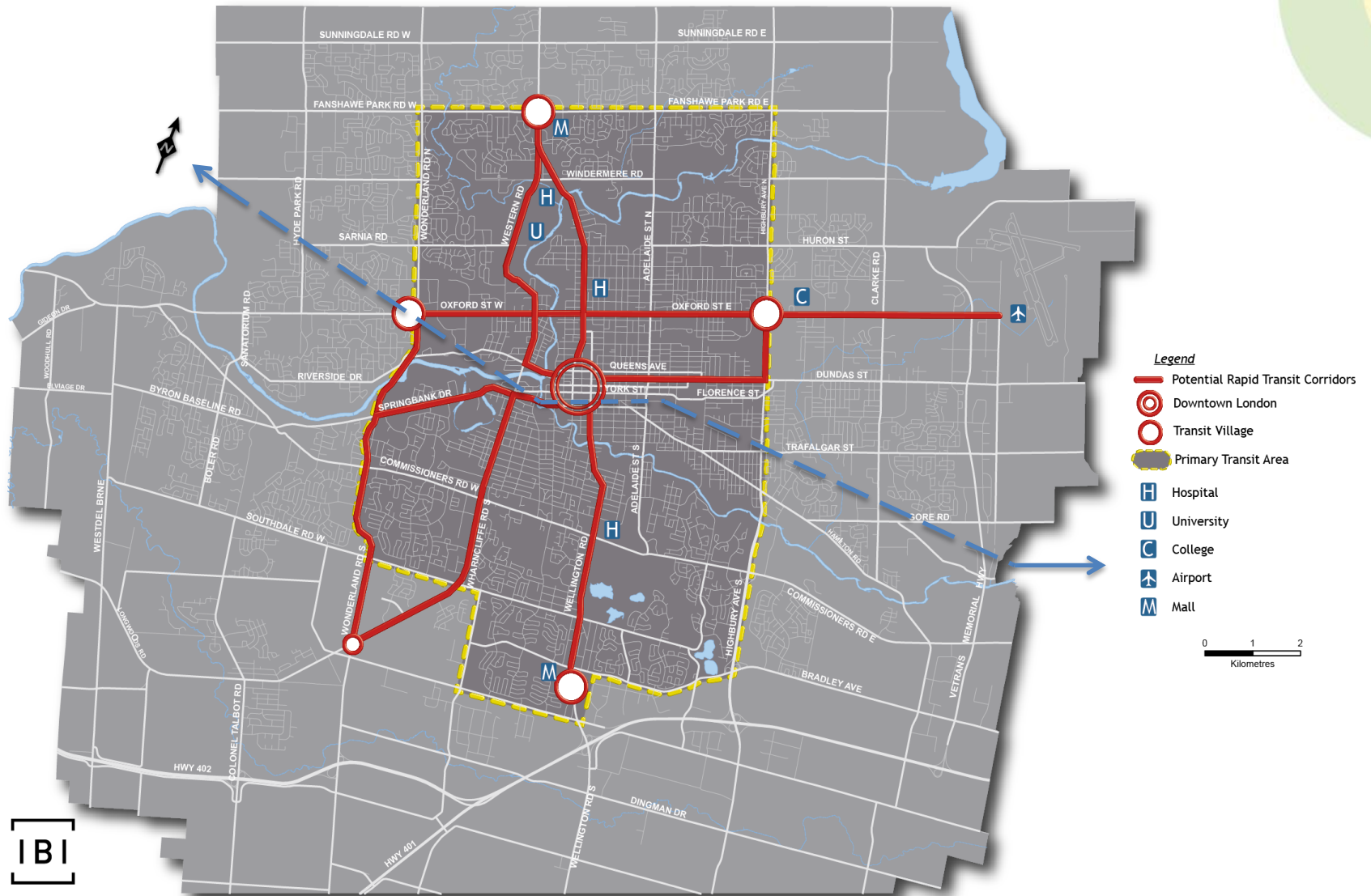
**TRANSPORTATION
CAPACITY
& MOBILITY
FOCUS**

**COMMUNITY
BUILDING
& REVITALIZATION
FOCUS**

What is Rapid Transit?

- ***Means the movement of many people, at the same time, and at higher speeds using vehicles such as buses or trains***
 - vehicles operating on designated rights of way
 - queue jump lanes at key intersections to allow transit vehicles to get ahead of traffic
 - high capacity vehicles
 - high frequency service
 - traffic signal priority at intersections to assist transit vehicles in maintaining their schedule
 - quality passenger amenities including enhanced stations, real time information and automated fare purchase stations

Project Study Area and Potential Corridors



Public Engagement



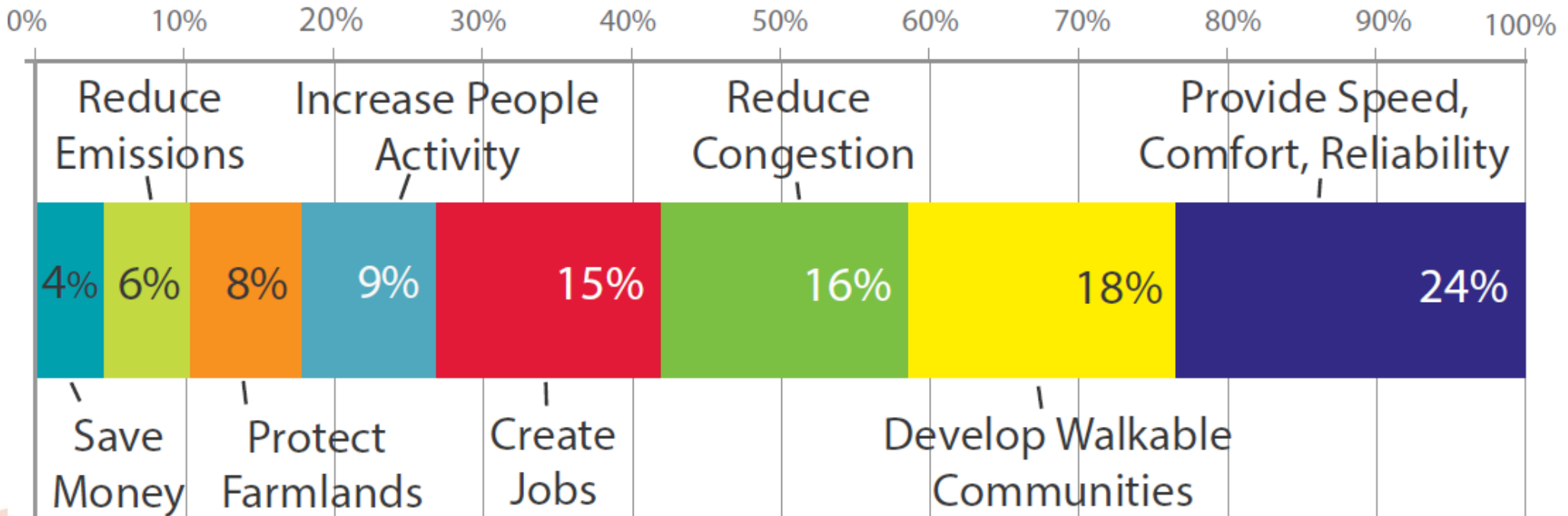
- ✓ Ongoing Public Engagement Initiative
- ✓ 13 events so far, reached 3800 individuals
- ✓ 10 upcoming events planned, listing on website
- ✓ Engagement planned for Fanshawe, festivals, sporting events, interest groups
- ✓ Over 730 followers on Twitter
- ✓ Over 300 followers on Facebook
- ✓ Initial feedback survey has over 700 responses
- ✓ Survey is online
- ✓ Over 1600 contacts in database

Feedback to Date

How You Think Rapid Transit Can Benefit London?

We've received over 600 responses to this question as part of the launch of Shift, reflecting a wide range of potential benefits.

PERCENTAGE OF RESPONSES TO DATE



Project Engagement

Get involved,
be part of the

shift



shift@london.ca



[@shiftldnont](https://twitter.com/shiftldnont)



facebook.com/shiftldnont



[@shiftldnont](https://instagram.com/shiftldnont)



2013

Council approves “Smart Moves” Transportation Master Plan

2014

“The London Plan,” the City’s new Official Plan (draft), establishing a vision for future growth, is introduced.

February 2015

Shift is launched with public information centre at Central Library.

Early-Mid 2015

Assessments of preferred alternatives for technology and alignment

Mid-Late 2015

Preferred corridor for Environmental Assessment selected

Early 2016

Detailed design for the RT route and plans for construction / funding

2020

A new rapid transit system is up, running and ready for riders in London