

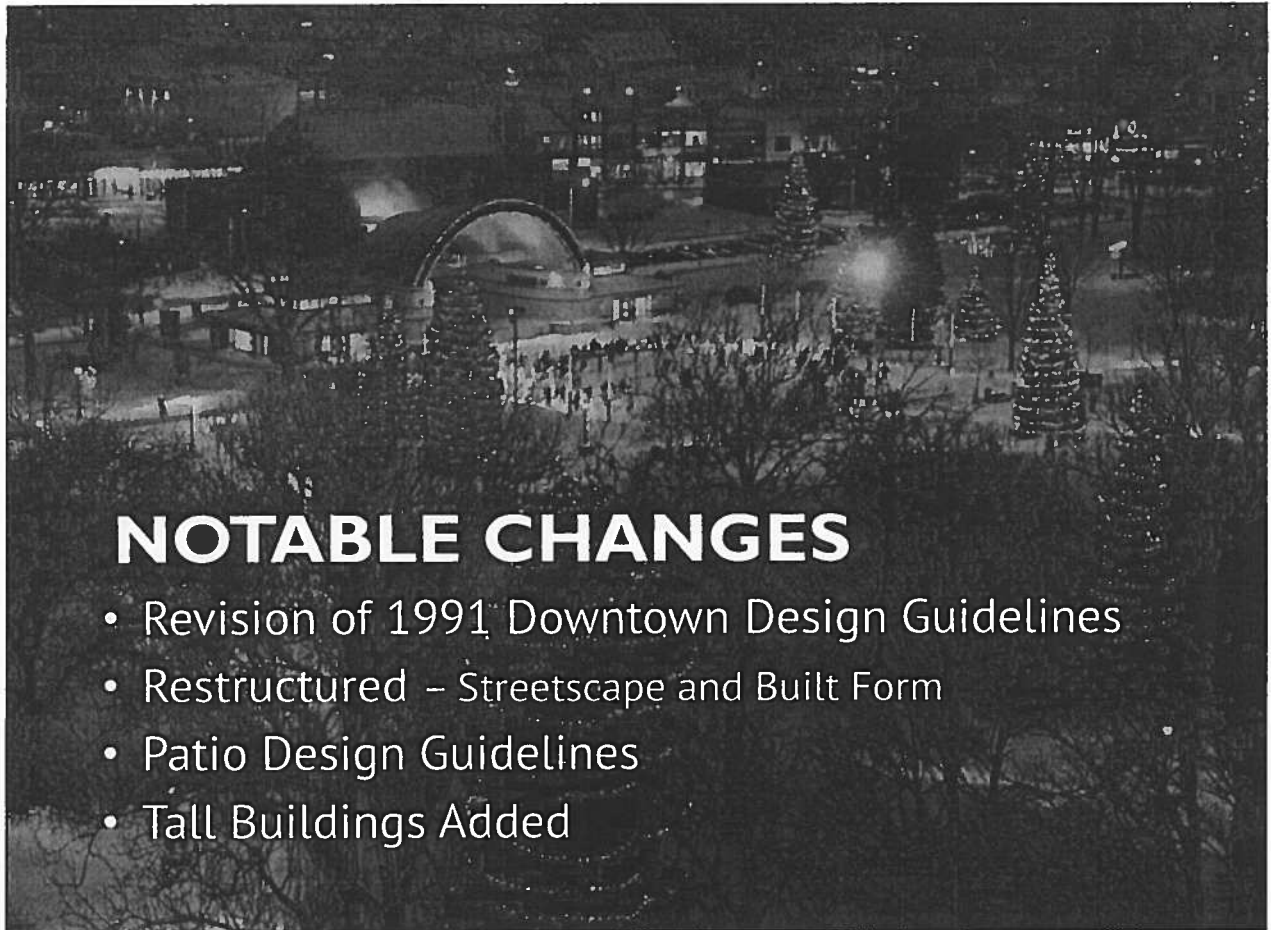
OVERVIEW

REPLACES:

Downtown Design Guidelines (1991)

GOALS:

Implement London's Downtown Plan
Augment heritage conservation district
guidelines (Downtown, Woodfield)



NOTABLE CHANGES

- Revision of 1991 Downtown Design Guidelines
- Restructured – Streetscape and Built Form
- Patio Design Guidelines
- Tall Buildings Added



GOALS

ALIGN ALL GUIDELINES WITH THE HCD GUIDELINES

HELP THE DESIGN CONVERSATION ABOUT CONTEXTUAL FIT IN THE DOWNTOWN

ALLOW FOR APPROPRIATE & SENSITIVE INTENSIFICATION

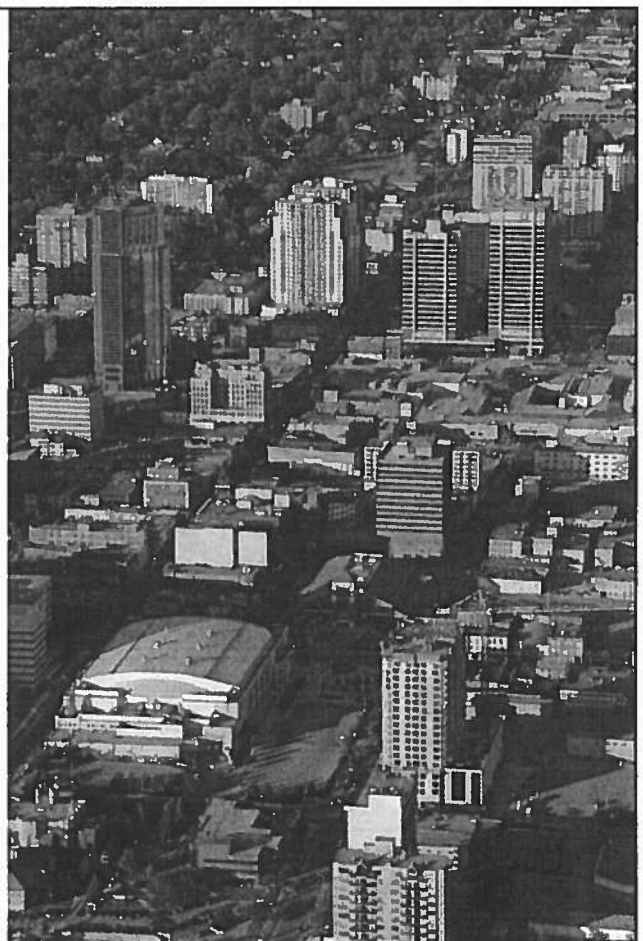
1.0 STREETSCAPE DESIGN

- 1.0 Introduction
- 1.1 Streetscape Classifications
- 1.2 Streetscape Framework
- 1.3 Crosswalk & Intersections
- 1.4 Transit
- 1.5 Street Trees
- 1.6 Placement of Street Furniture
- 1.7 Public Spaces
- 1.8 Landmarks & Gateways



2.0 BUILT FORM & SITE DESIGN

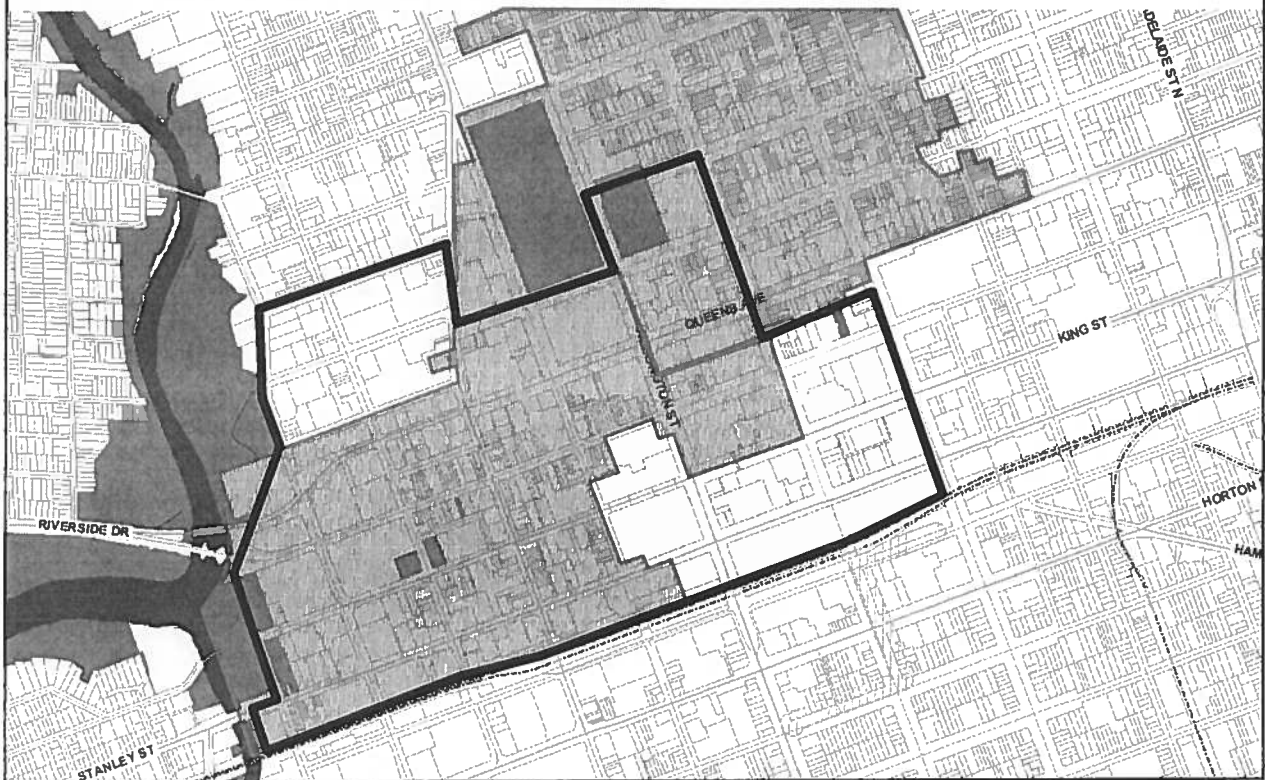
- 2.0 Introduction
- 2.1 Site Layout
- 2.2 Built Form
- 2.3 Tall Buildings
- 2.4 Architectural Details
- 2.5 Interior Spaces
- 2.6 Parking
- 2.7 Service and Loading



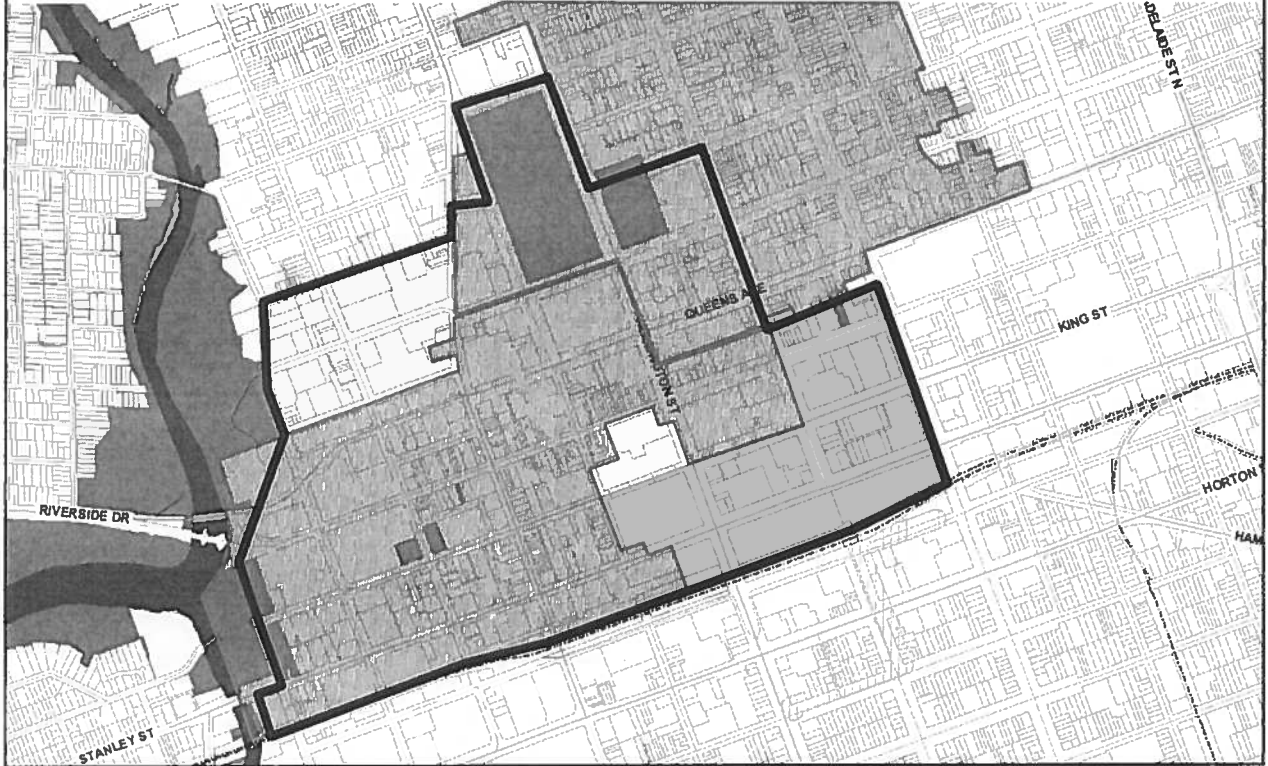
3.0 PATIO DESIGN



BOUNDARY | CURRENT OP



BOUNDARY | THE LONDON PLAN



DRAFT
CITY-WIDE

URBAN DESIGN MANUAL



City of London
Planning Services
January 2015



OVERVIEW

REPLACES:

PLACEMAKING GUIDELINES (2008)

COMMERCIAL URBAN DESIGN GUIDELINES(1999)

DRAFT URBAN DESIGN GUIDELINES (2012)

EXCEPTIONS:

AREA SPECIFIC GUIDELINES

(DOWNTOWN, INDUSTRIAL AREA, HYDE PARK, ETC)

CONTENT

1. **SITE CHARACTER & CONTEXT**
2. SITE ORGANISATION
3. **BUILDINGS**
4. CONNECTIVITY
5. SUBDIVISIONS
6. PUBLIC REALM



NEXT STEPS

Consulting with Stakeholders
Collect and integrate comments
Return to PEC – May/June

Heritage Planners' Report to LACH: March 11, 2015

1. Heritage Planning Orientation – April 8, 2015 LACH meeting
2. Heritage Conservation Districts
 - a. Blackfriars-Petersville Heritage Conservation District
 - OMB appeal date originally scheduled for February 17, 2015 has been rescheduled
 - b. Wortley Village-Old South Heritage Conservation District
 - No date set for OMB appeal
 - c. Heritage Conservation District Study for St. George-Grosvenor Area
 - Evaluating submissions
3. London Community Foundation – Endowment Fund for Heritage – 2015
 - Applications accepted until April 1, 2015
 - More information: <http://www.lcf.on.ca/receive/london-endowment-heritage-grant-program>
4. Old Victoria Hospital

Events

1. Hopping into History, London's Old East Village – Art Show Reception and Book Launch – Wednesday March 11, 2015 (**tonight**), 6:30-8:30pm at Aeolian Hall (795 Dundas Street)
2. History of the St. George-Grosvenor Area, Mark Tovey – London & Middlesex Historical Society – Wednesday April 15, 2015, 7:30pm at Middlesex County Courthouse
3. Victorian Secrets -Eldon House
Sunday, March 22, 2:00 p.m.
4. Fugitive Slave Chapel Open House – Friday March 27, 2015, 12:00-6:30pm, Saturday March 28, 2015 from 9:00am-6:30pm at Beth Emanuel Church (430 Grey Street)
www.fscpp.ca
5. Downton Abbey Tea Party - Saturday, March 28, 2015, 1:30pm at Eldon House
6. Easter Party – Sunday March 29, 2014, 1:00-4:00pm at Eldon House
7. Vimy Ridge Commemoration and Film Night – April 9, 2015, 7:00pm at Museum London (free)
8. Ontario Heritage Conference 2015, Niagara-on-the-lake – April 30 – May 2, 2015
<http://www.2015heritageconference.com/>
9. Old South Community Organization, Gathering on the Green – Saturday June 6, 2015
10. ACO Geranium Heritage House Tour: Old East – Sunday June 7, 2015