



Presented By: Gail McMahon
On behalf of the Board of Directors,
London Block Parent® Program
gmcmahon@london.ca
www.london.ca/blockparent

Date: January 17, 2012
Public Participation Meeting

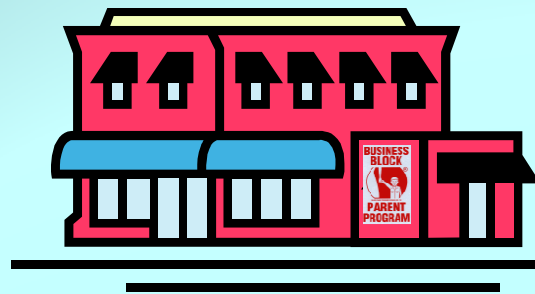


Financial & Community Support

- City of London, Core Funder
- London Police Service, In-Kind
- Partnerships LDCSB & TVDSB, Safety Village, ASRTS, MLHU + many others
- Donors, Grants, Sponsors & In-kind

Mission Statement

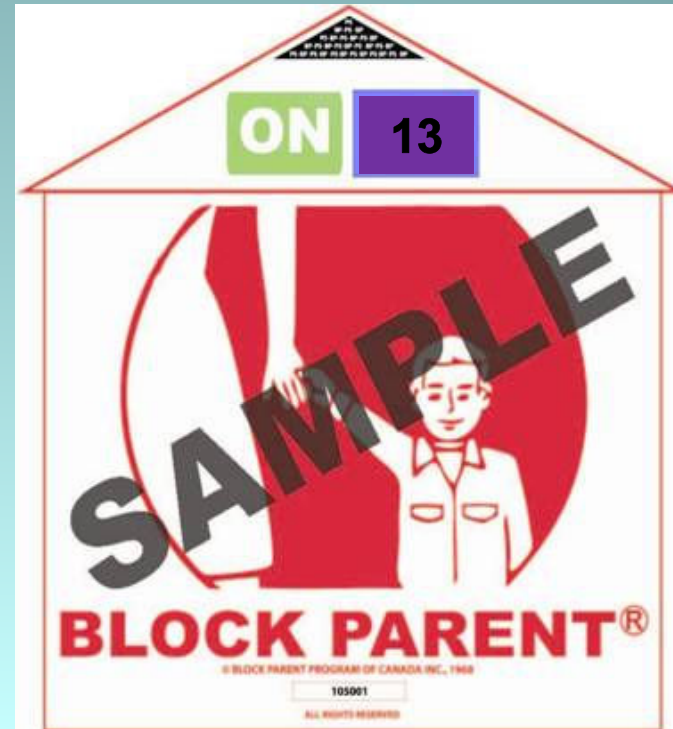
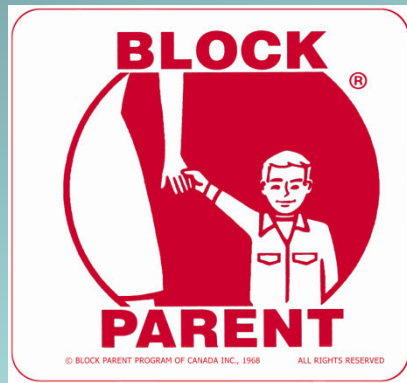
- To provide a network of safe havens in every neighbourhood and to provide supportive education in the community



History

- The Program began in London in 1968
- In 2006 an independent Risk Assessment was done including input & consultation from RCMP & Policing Agencies and Block Parent[®] Programs across the country. Risk was assessed as low and recommendations were made.

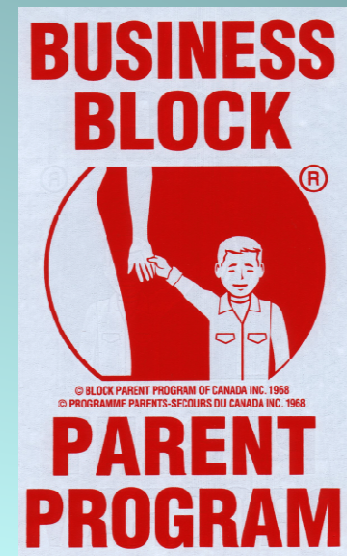
We've Evolved



In 2008 & 2009, we recalled all old signs and introduced new Block Parent® sign along with upgraded policies & procedures

We've Progressed

- 2010 we implemented the Business Block Parent[®] Program to expand reach into areas where there are no residential options, i.e. Old East Village area





LONDON
COMMUNITY
FOUNDATION

We're Diversifying

Current Pilot Project BLOCK WALK PROGRAM



Block Parent® volunteers who take shifts walking to/from school on designated “Walking School Bus” routes



Welcome to
www.healthunit.com
519-663-5317
50 King Street, London, ON CANADA
51 Front St. E., Stratford, ON CANADA



We Educate

Internet Safety

Stranger Safety

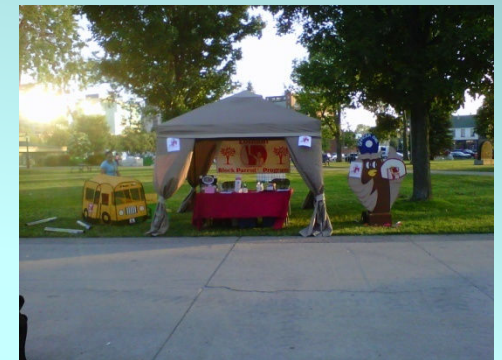


Street-Proofing



Traffic Safety

Home Alone



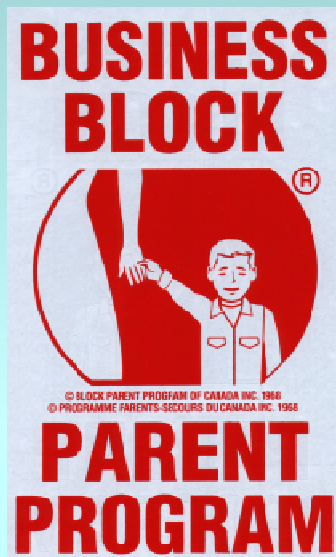
How? When? Why? use a Block Parent® home or business



Diversifying for a Safer London



At Home



At Work



At School

The Program Works!!

Reported Incidents	2007-2011
Bullying	26
Car Breakdown	2
Frightened - Animal/Stranger/Car	15
Injured or ill	29
Locked Out	13
Lost / Directions Needed	38
Weather Related	7
Other	23
TOTALS	153

To Ensure Due Diligence

- 10 Step Volunteer Application process
- Residents 12 & over must undergo Police Records Check & VPS
- All Residents are “Flagged” in London Police system
- Regular contact is maintained to ensure screenings are on file

FACT:

**#1 Hundreds of Londoners
have found help when they
needed it!**

**#2 1600 London Block Parents
locations display signs on
average 25 hours per week
(2 million hours per year)**

FACT:

**#3 No one has ever been
harmed in the care of a
Block Parent® in 44 years**

Police In-kind Support

- Police Records Checks
 - Flagging
 - Liaison Officer
- School Safety Officers
- YMCA Safety Village

Reduced Police Support

- No in-kind donation of Police Record Checks effective immediately
- Will no longer maintain the flagging system as soon as March 31, 2012 (stating that poses a risk to London Police for our Program)
- Moving to **www.mybackcheck.com**, which is an online PRC application process
- Provided a Liaison Officer only
- No prior consultation regarding impact nor sufficient lead time to react

IMPACT - Fee for Police Checks

- New Block Parents applicants will be expected to pay for police checks for all residents 12 years of age and older
- Cost of \$60 for family of 4 PLUS finger printing of added \$25, if needed
- Will impact recruitment efforts especially in lower income, higher risk areas of the City
- Impact is manageable
- Sustainable funding for new expense needs to be found

IMPACT - Flagging System Removal

- As per Block Parent[®] Program of Canada policy without flagging system, we need to re-screen approx. **4500** Block Parent[®] volunteers every two years
- Increases risk to citizens of London & Program until rescreening is completed.
- Sustainable funding needed to support those unable to pay for re-screening of **2250 individuals per year**

IMPACT - Flagging System Removal

- Expect devastating loss of Block Parent[®] locations due to cost & logistics on a per family basis, estimate up to 50% on first re-screening
- Online application “Virtual Front Desk” does not take into account the number of senior or non-connected volunteers in our database
- The annual volume of administering police checks will soar, therefore an increase in budget will be necessary.....

FINANCIAL IMPACT – New Applicants

2012

- **Based on 125 New Block Parent® locations**
- **at an average of 4 screenings per location**

Total Budget Increase for 2012 of \$7500

(potential cost recovery via donation on application of \$3750)

FINANCIAL IMPACT – No FLAGGING

2012

- **Based on current Block Parent® base of 2250 volunteers on record to be re-screened each year to adhere to BPPCI policy**

- **Total Budget Increase per year of
\$105,750**

(potential cost recovery via personal donation on application of \$26,437

GUESTIMATED COST TO POLICE

- **Based on information from experience, time to review/administer flags 20 – 30 minutes per day so based on 5 hours a week or (.2 FTE) at a police staff/officer salary of \$75000**
 - **Total Budget to Police**
\$15,000

PROGRAM IMPACT

- **Participation for the Program will be substantially reduced within a two year period**
- **Consideration will necessarily be given to folding the Program**

IMMEDIATE ACTION

- **Asking Council to consider a motion that requests the police department continue with the flagging system**
- **We will request a delegation status to the Police Services Board to plead our case to them**

Our Vision



TO MAKE LONDON A SAFE PLACE
TO LIVE, WORK AND PLAY.

