



LONDON



**Civic Work Committee:
Crinklaw Municipal Drain
Public Participation Meeting**

March 3, 2015



What is a Municipal Drain?

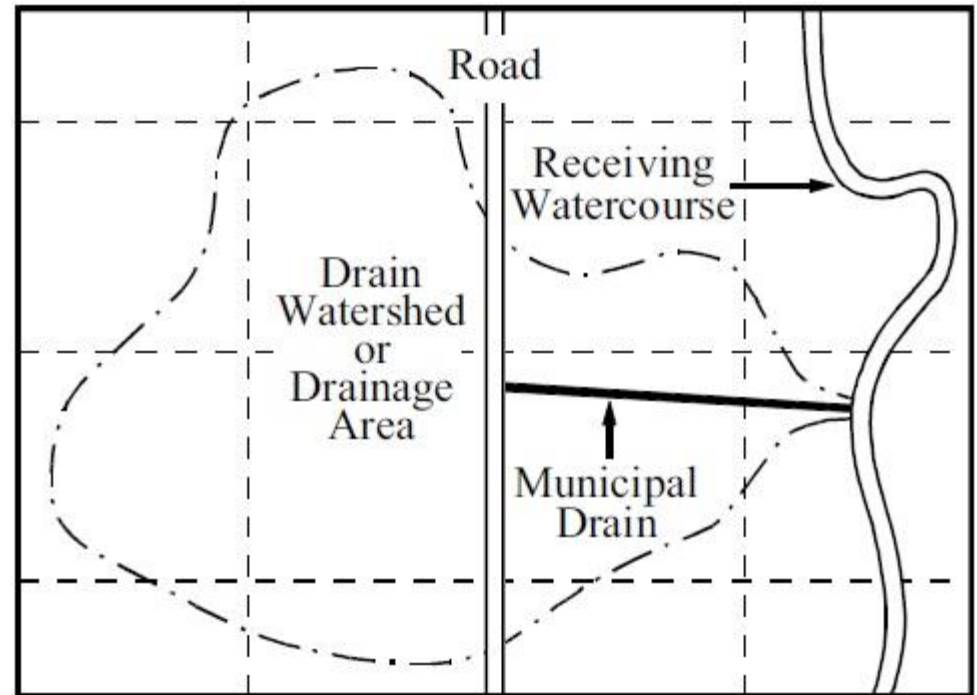
- A Municipal Drain is a system to convey stormwater created under the *Drainage Act*.
- The City is responsible for the construction of the drainage system and future maintenance and repair.
- Costs are recovered from the property owners in the watershed of the drain.
- Most municipal drains are either ditches, pipes or tiles buried in the ground.





How is a Municipal Drain created?

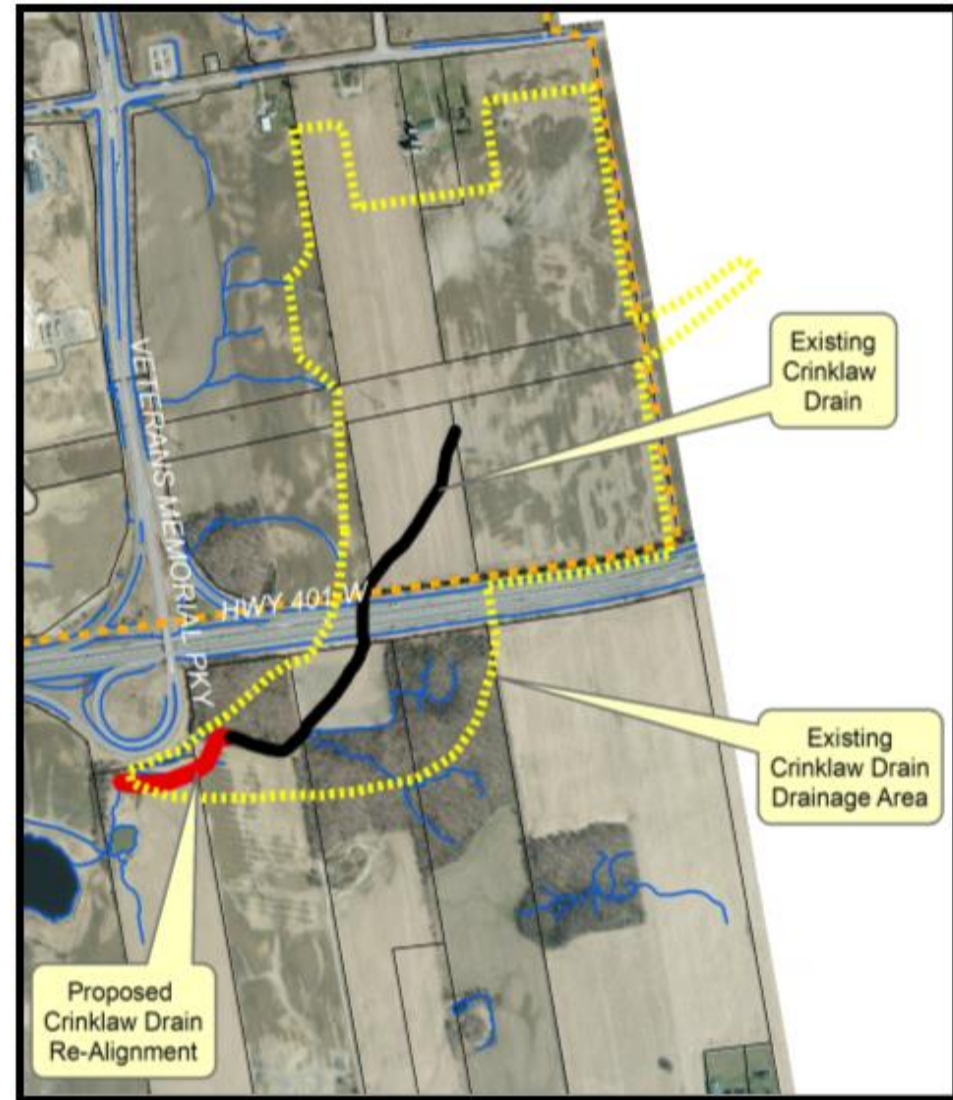
- Must be identified by municipal bylaw that adopts an engineer's report.
- The engineer's reports contains the design and location of the drain and how costs are to be shared among property owners.
- Landowners can appeal their portion of the assessed costs to the Court of Revision.





The Project: Crinklaw Municipal Drain

- Before committee is a resolution to adopt the drainage report and enact the related by-law.
- This drain is required to accommodate the Veterans Memorial Parkway South Extension and Highway 401 Interchange project.
- To be constructed by MTO.

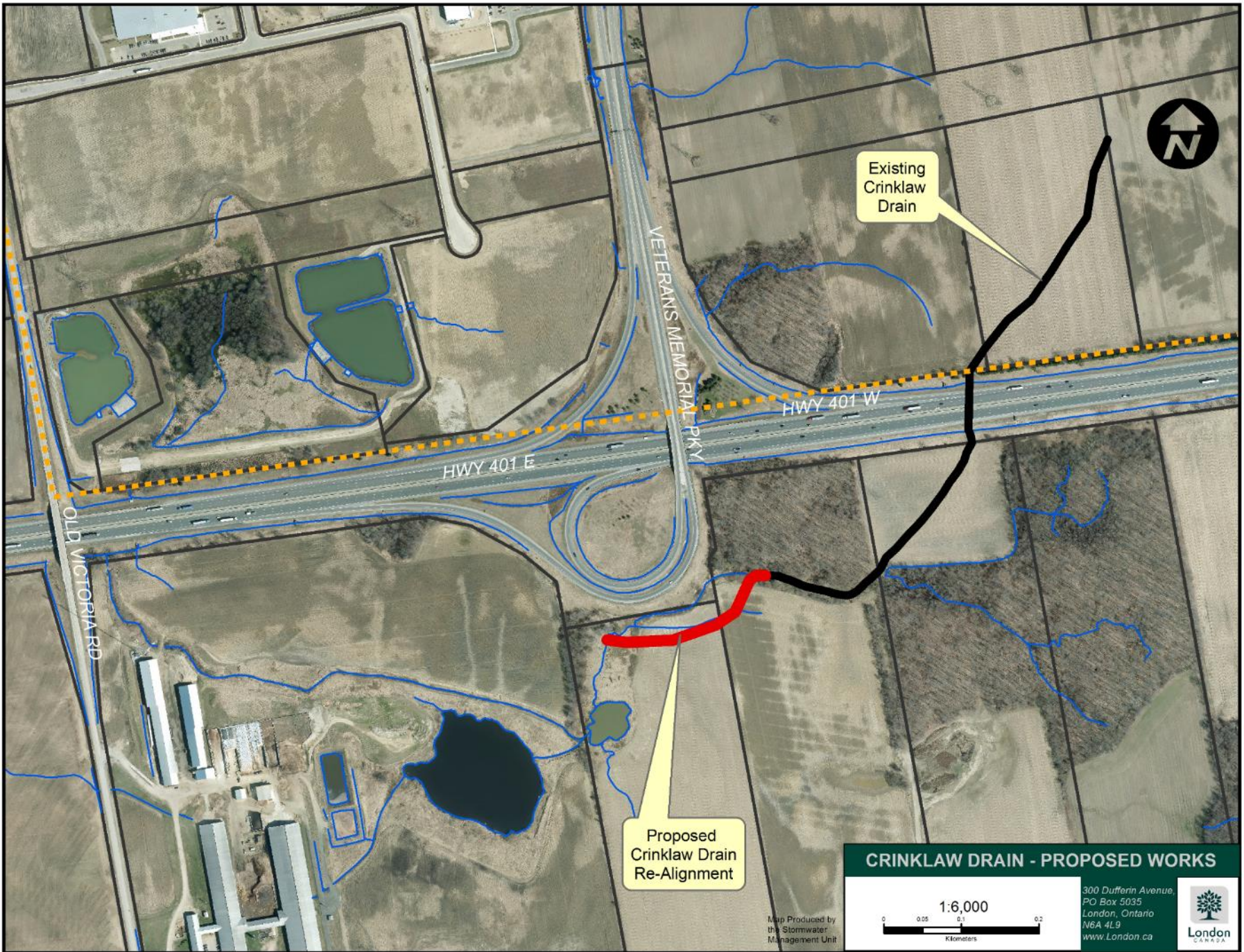




VMP South Extension

- Partnership project with Ministry of Transportation
- VMP Extension to Wilton Grove Road and Interchange Improvements
- EA completed in 2013
- Environmental Impacts minimized
- Drain realignment required for interchange reconfiguration
- Design-Build Procurement underway by MTO





Existing Crinklaw Drain

Proposed Crinklaw Drain Re-Alignment

CRINKLAW DRAIN - PROPOSED WORKS



Map Produced by the Stormwater Management Unit

300 Dufferin Avenue,
PO Box 5035
London, Ontario
N6A 4L9
www.London.ca

