

Keeping the Forest in 'The Forest City' Working on a Tree Planting Strategy

January 20, 2015



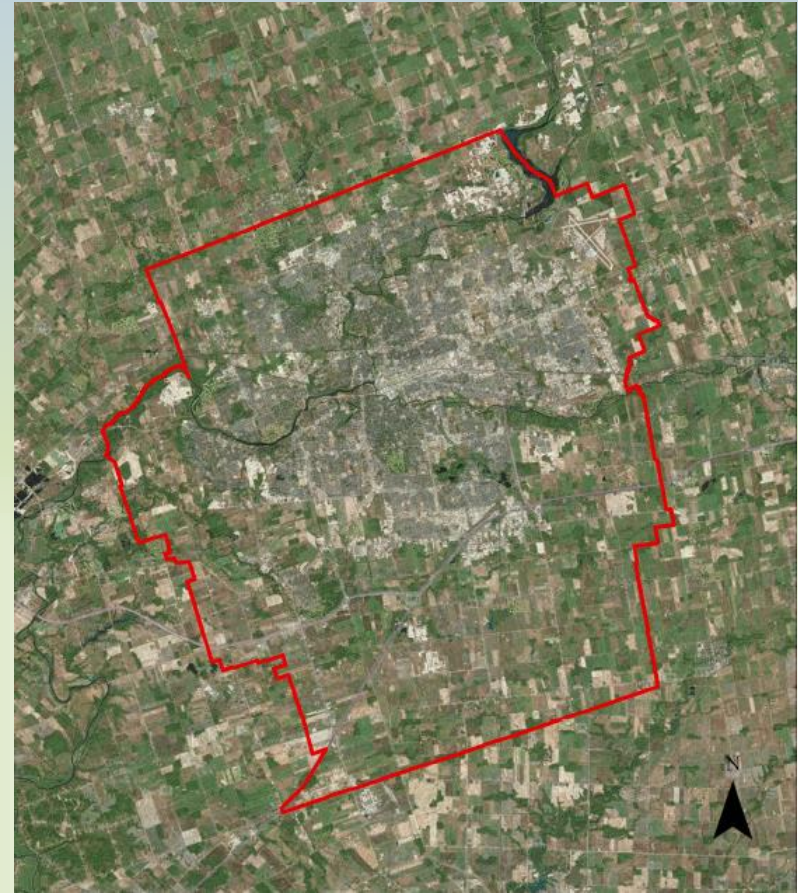
London
CANADA

The Urban Forest Strategy outlines many goals, some of which include tree planting.



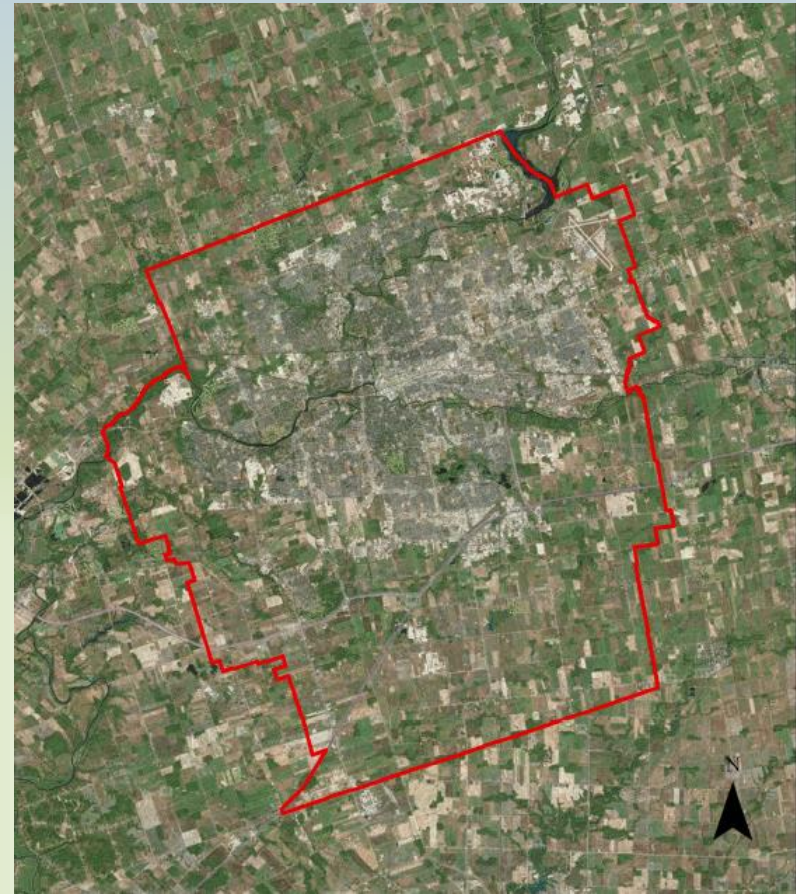
London
CANADA

Urban Forestry would like to target some of the action items within the Urban Forest Strategy to create a Tree planting strategy for City owned property.



London
CANADA

This is a starting point. Most land within the City is privately owned. Strategies for planting on private lands must also be reviewed. Priorities from these private stakeholders needs to be gathered.



London
CANADA

Action Items from the Urban Forest Strategy

1.1 Establish canopy cover targets by Place Type

2.7 Increase tree planting to meet canopy cover targets

Table 1. Suggested canopy cover goals by current land use types.

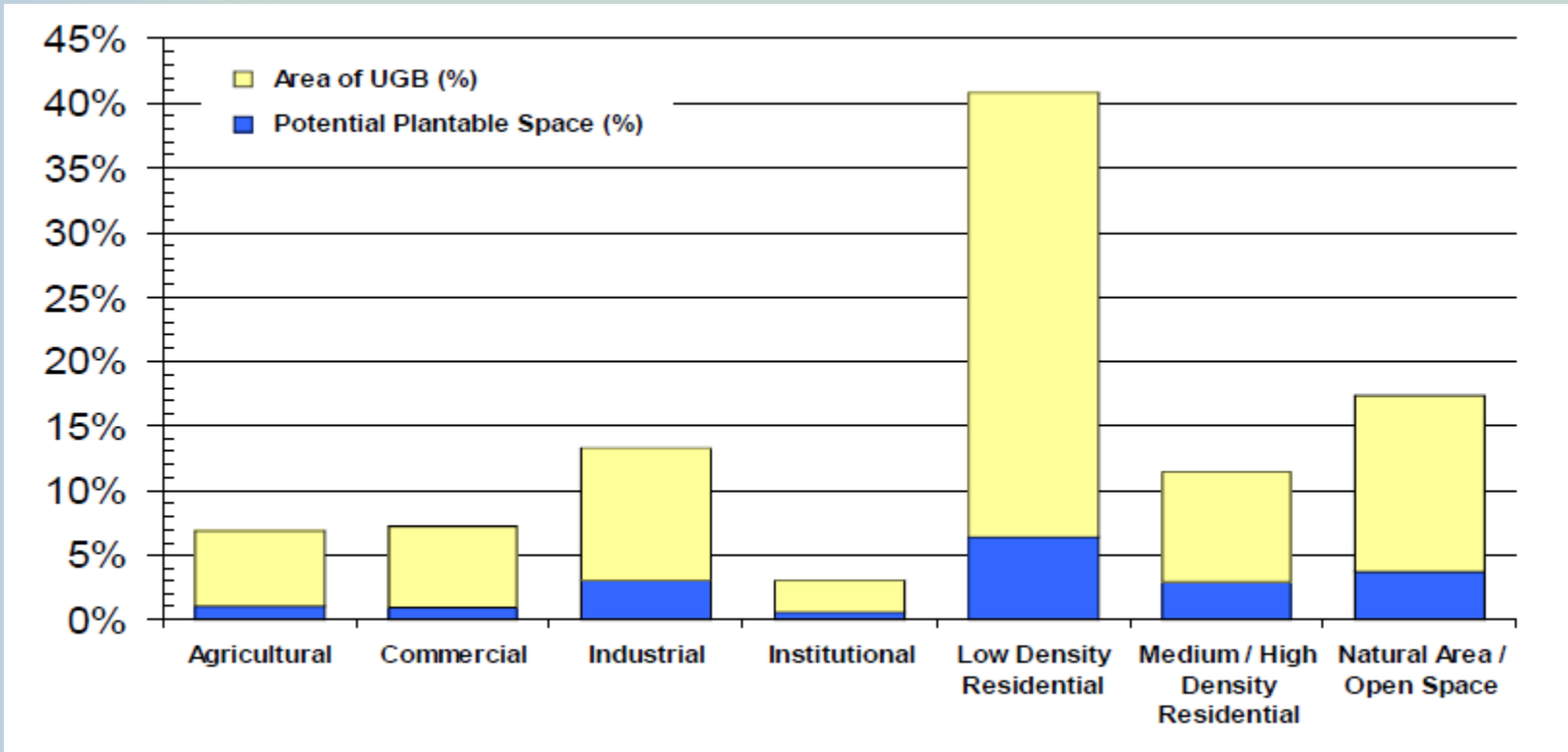
Land Use Type	Target Canopy Cover by 2035	Target Canopy Cover by 2065
Agriculture	13%	15%
Commercial	10%	15%
Institutional	18%	20%
Industrial	12%	15%
Low density residential	27%	35%
Medium and high density residential	19%	25%
Natural area and open space	55%	60%
City-wide	28%	34%

Percentages for land use types to be adjusted, City-wide numbers were increase by Council and are correct

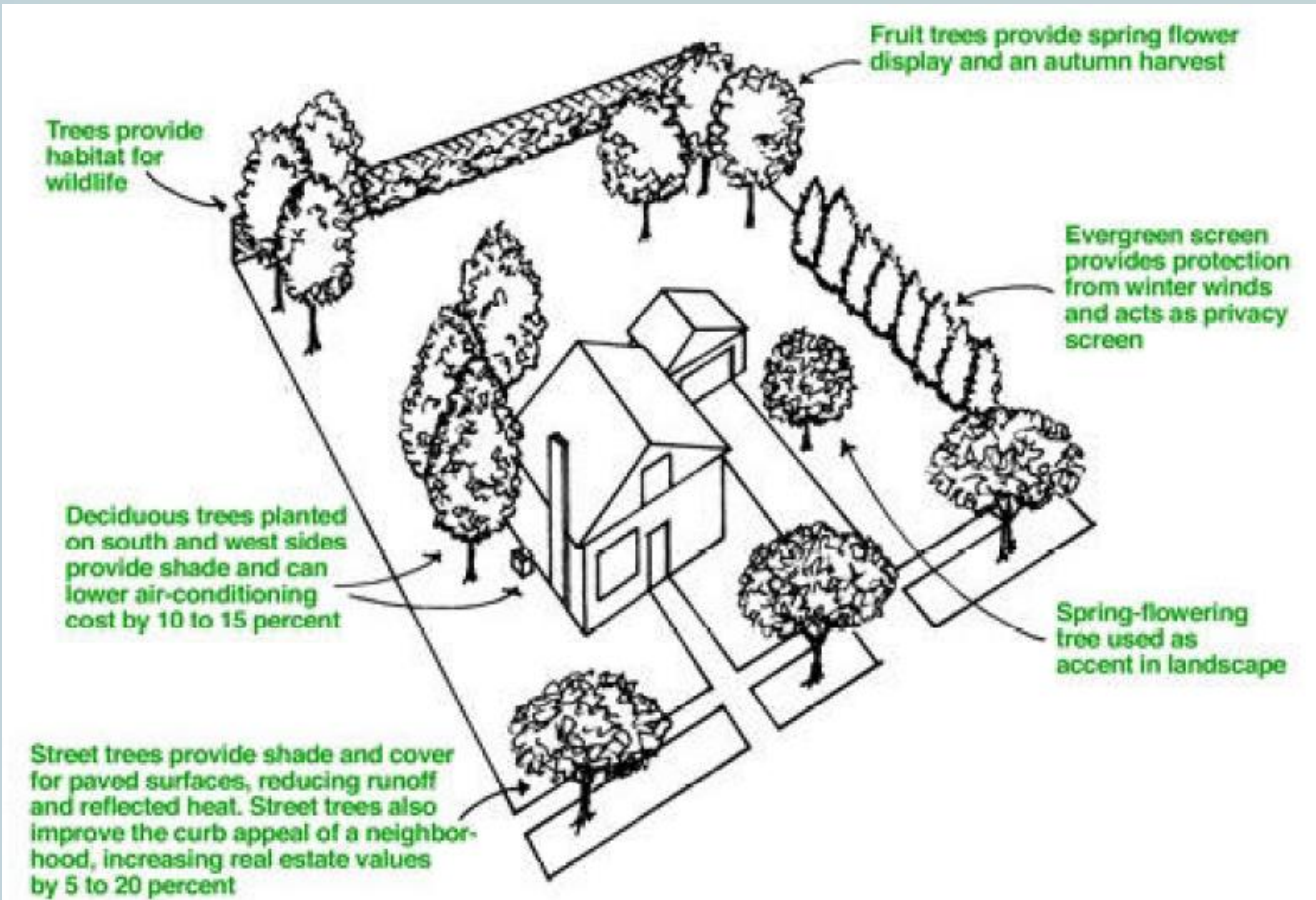


1.3 Prepare a Planting Strategy for the City

2.1 Identify plantable space opportunities



2.3 Apply “right tree, right place” best practices to select trees most suitable for the site

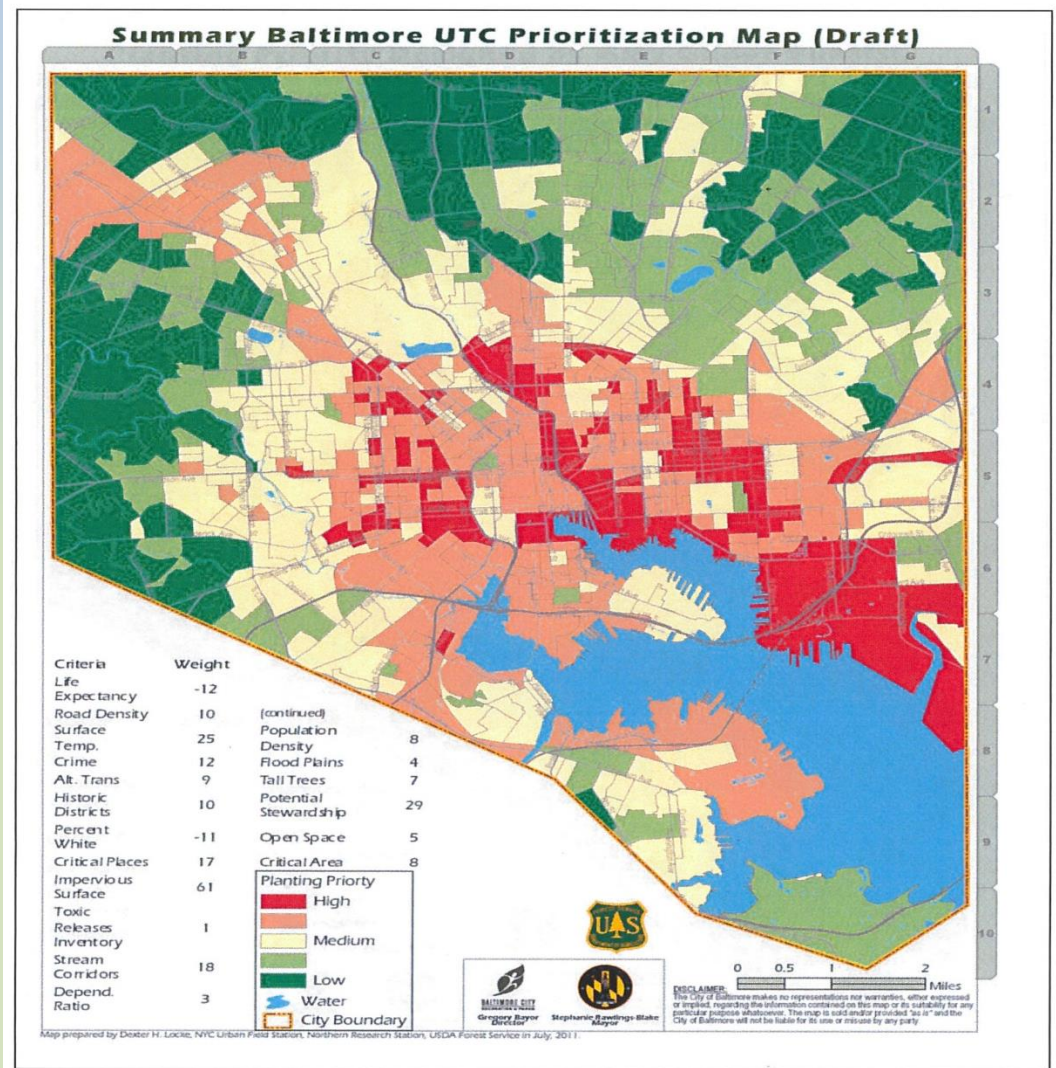


2.6 Prioritize the enhancement of plantable space in areas that are “hot spots”

Urban Tree Canopy Assessment and Prioritization tool

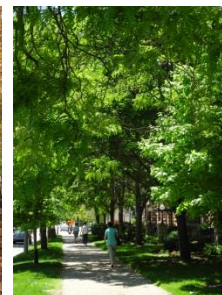
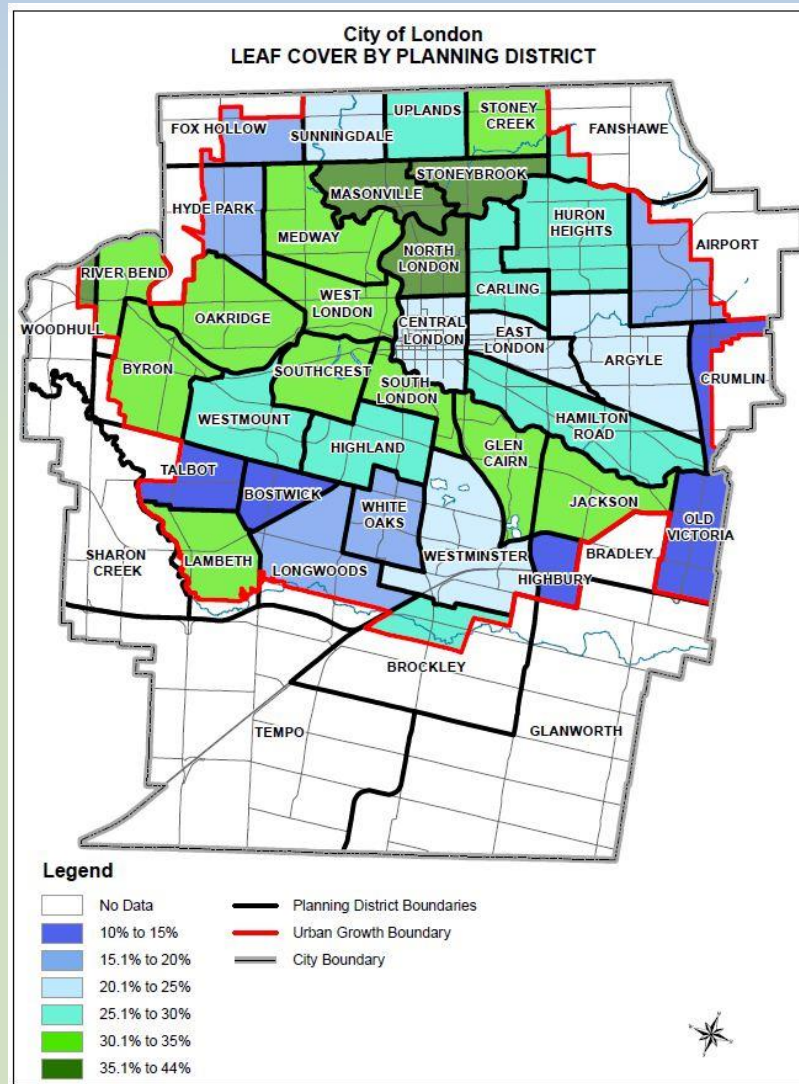
Baltimore is used in this example

<http://digitalcommons.lmu.edu/cgi/viewcontent.cgi?article=1132&context=cate> . This map was created using the assessment.



London
CANADA

By creating a tree planting strategy, we hope to focus tree planting to get the “biggest bang for the buck”

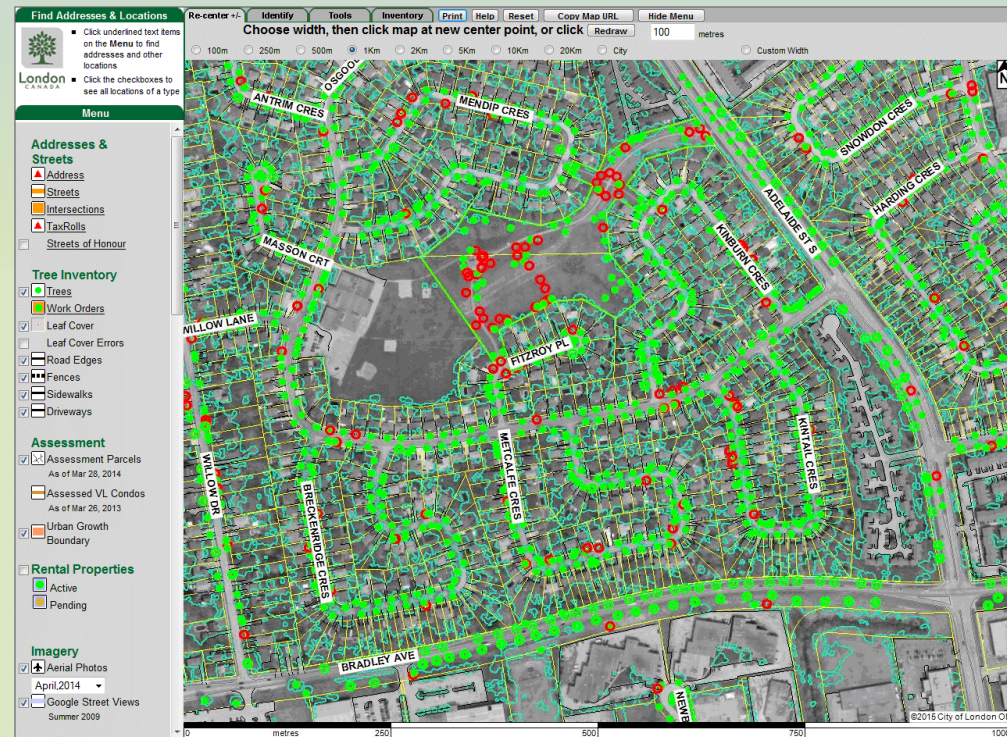


Ask of TFAC

Prioritize planting areas so they can be mapped. Some examples are:

- 1) Geographic areas
- 2) Demographic areas
- 3) EAB replacement
- 4) Infill planting (replacements and requests)
- 5) Leaf cover percentages
- 6) Any other place types that can be mapped

We would ask for feedback by the March TFAC meeting so it can be included in the Tree Planting Strategy



Ask of TFAC

Look at the big picture. Think about how we can also reach out to private land owners, similar to the Baltimore example

