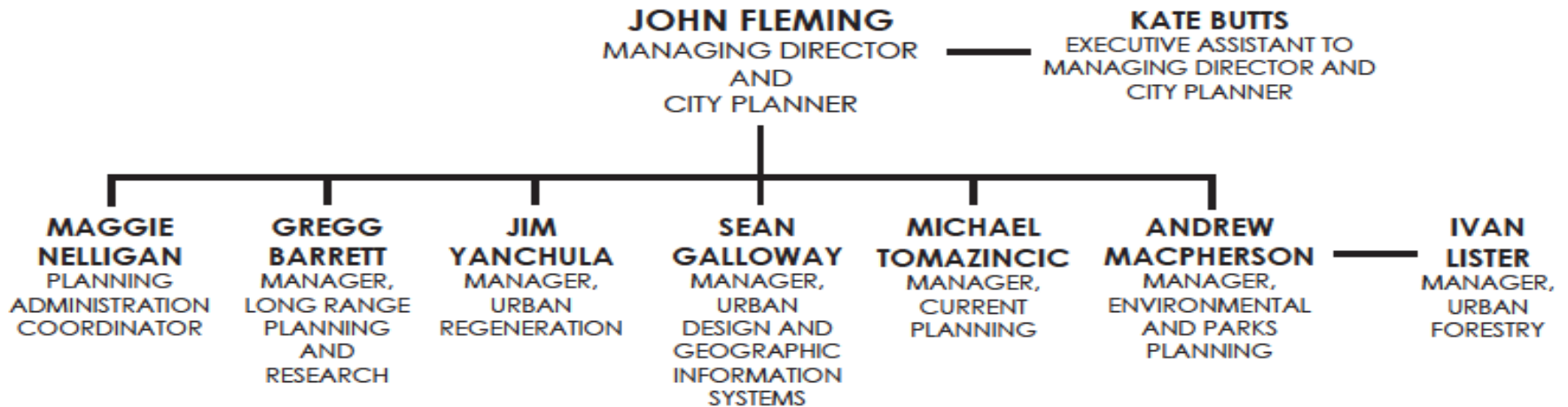


Planning Services - Environmental & Parks Planning

Community & Protective Services Committee
December 16th, 2014

PLANNING SERVICES



What we do.....

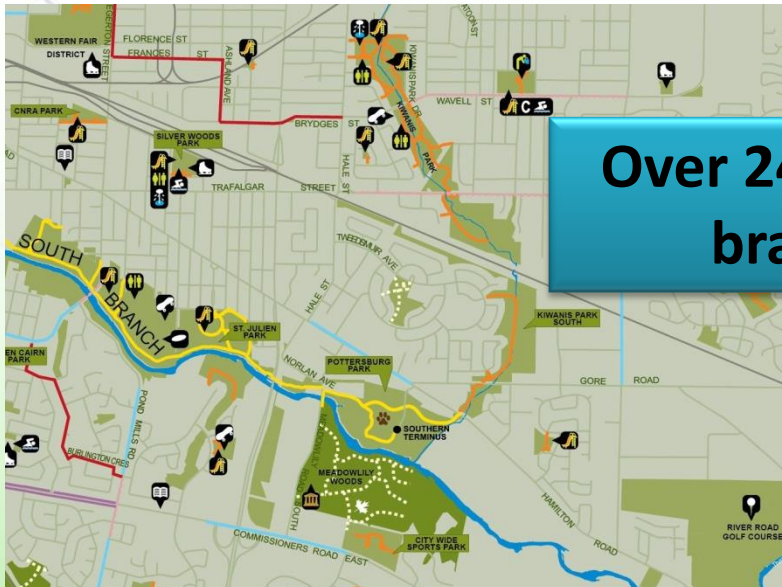
- Environmental Planning (PEC)
- ESA Management (PEC)
- Urban Forestry (PEC)
- Planning Application Review (PEC)
- Parks Planning – LCR and Growth
- Park Design and Construction
- Community Projects / Adopt - a ...
- Dog Parks and Wildlife Issues

Major Program Areas for CPSC:

- Thames Valley Parkway
- District Parks
- Neighbourhood Parks
- Open Space Links
- Sports Parks
- Springbank / Victoria Parks
- Community Projects
- Specialty Parks – Skate / Dogs

Pathway System

- Planning and Design for 50km TVP & 110km paths
- Key infrastructure for neigh. connections and active living



Over 24,000 users on each branch per month



District Parks



Neighbourhood Parks

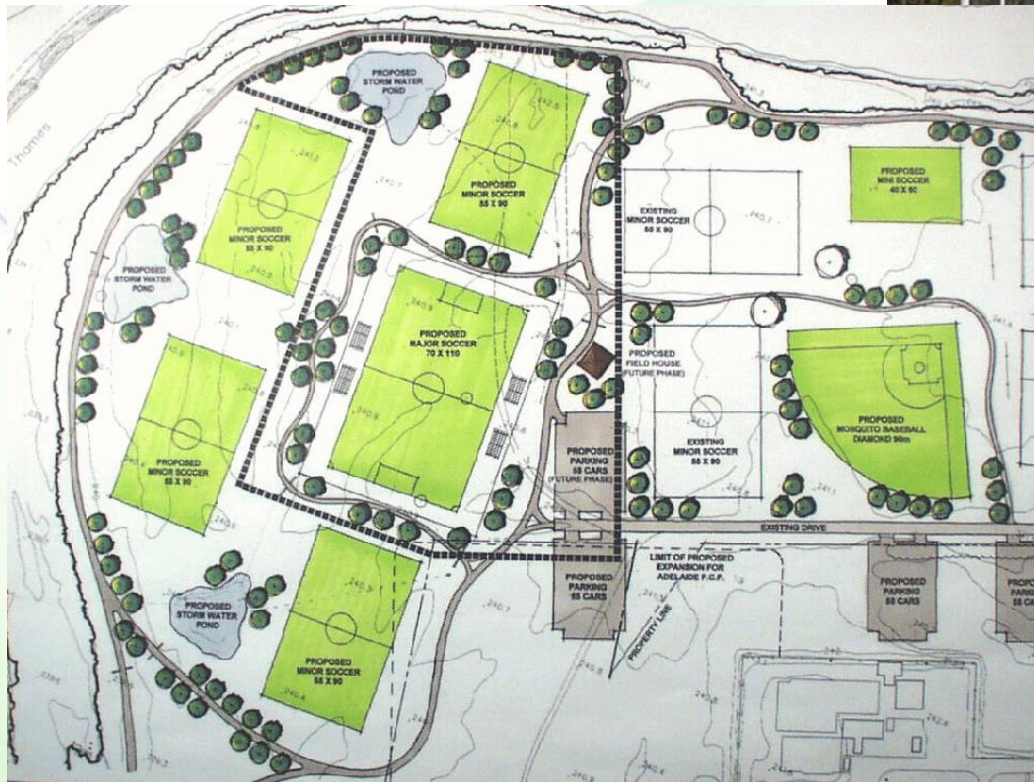
151 Parks across City



Open Space Links



Sports Parks



Springbank & Victoria Parks



Community Projects



- \$800,000 in value donated to the City in 2013
- 5400 volunteers



Specialty Parks

3 Off-leash Parks
13 Skate Parks





WOMEN

MEN

Forks Pavilion
14 King Street



VICTORIA PARK









Watch for..... in 2015

- Kiwanis/CN bridge EA and design
- 2014 Community Projects Summary
- Piccadilly Park Update
- Queens Park
- TVP – North Branch EA starting
- Cycling Master Plan starting
- Our 4th Off-leash Park