

--	--

TO:	CHAIR AND MEMBERS CIVIC WORKS COMMITTEE MEETING ON NOVEMBER 3RD, 2014
FROM:	EDWARD SOLDI, P.ENG. DIRECTOR OF ROADS AND TRANSPORTATION
SUBJECT	CLOSING PART OF CONCEPT DRIVE

RECOMMENDATION

That, on the recommendation of the Director of Roads and Transportation, the following actions be taken with respect to Concept Drive:

- (a) the closing of that part of Concept Drive between Old Victoria Road and Innovation Drive on Plan 33M-544 **BE APPROVED**, and
- (b) The Chief Surveyor **BE AUTHORIZED** to initiate the process of legally closing the portion of Concept Drive between Old Victoria Road and Innovation Drive by by-law.

BACKGROUND

The purpose of this report is to obtain Council approval to legally close as public highway, that part of Concept Drive on Plan 33M-544 between Old Victoria Road and Innovation Drive to enable the road allowance to be developed as industrial land.

DISCUSSION

Concept Drive was established as a road allowance in the City's Innovation Park industrial development when Plan 33M-544 was registered on March 7th 2006. The industrial park is developing in such a fashion the portion of Concept Drive lying between Old Victoria Road and Innovation Drive is not required to support industrial development, and Realty Services has requested the road allowance be closed and made available for development.

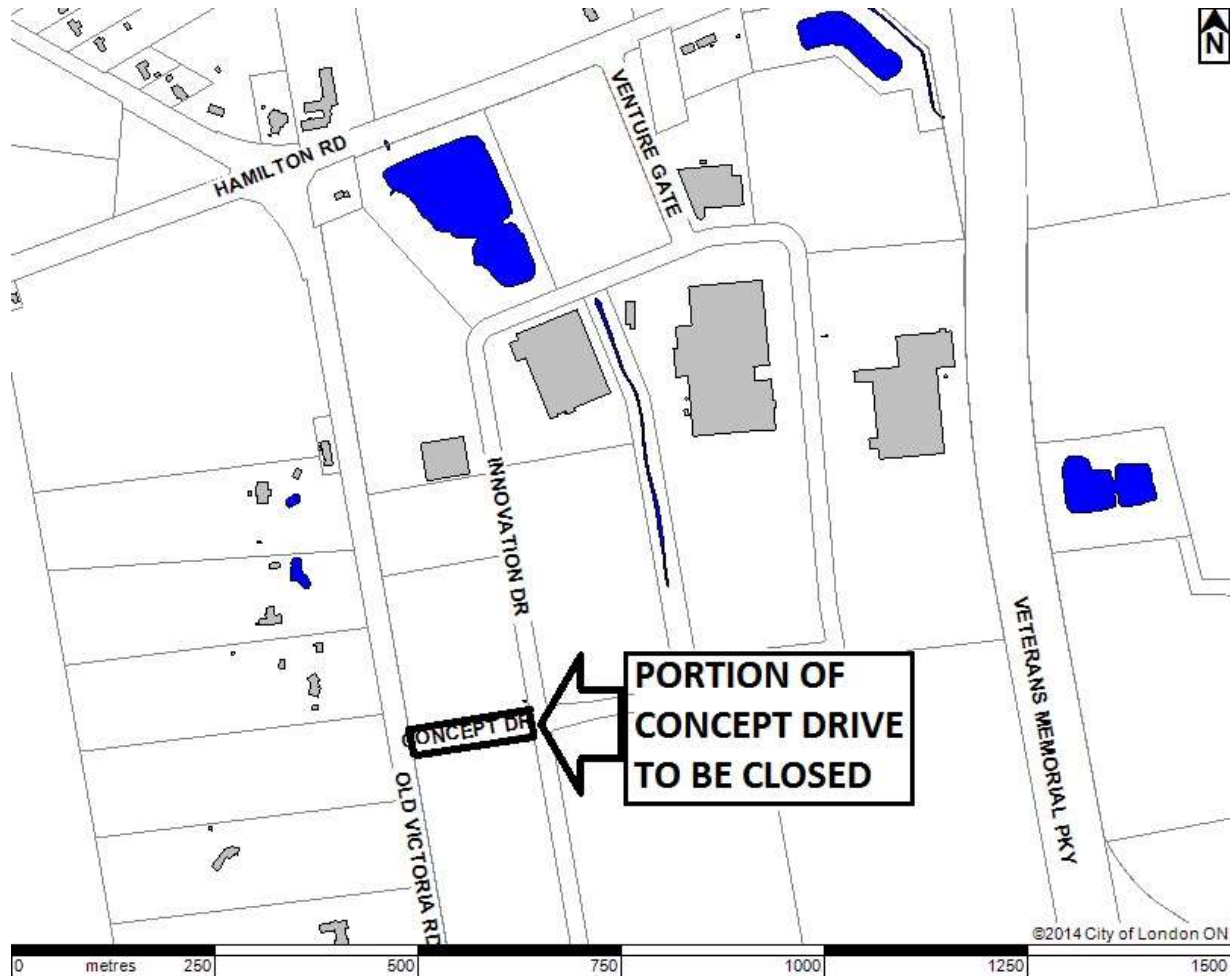
The subject portion of Concept Drive is not traveled as it was never built out and contains no services or utilities. It is not required for public purposes and is surplus to the needs of the City.

Once the street has been legally closed, it can be consolidated with abutting vacant lands and be made available for industrial land development.

CONCLUSION

Since the untraveled part of the Concept Drive road allowance on Registered Plan 33M-544 lying between Old Victoria Road and Innovation Drive is not required to support industrial land development and is not needed for any other public purpose, it is recommended the road allowance be closed as public highway so that it can be developed as industrial land.

--	--



PREPARED BY:	RECOMMENDED BY:
A. GARY IRWIN, O.L.S., O.L.I.P. CHIEF SURVEYOR AND DIVISION MANAGER, GEOMATICS	EDWARD SOLDI, P.ENG. DIRECTOR OF ROADS AND TRANSPORTATION
REVIEWED AND CONCURRED BY:	
JOHN M. BRAAM, P.ENG. MANAGING DIRECTOR ENVIRONMENTAL SERVICES AND CITY ENGINEER	

October 6, 2014
/agi

copy: Bill Warner
Robert Sutton